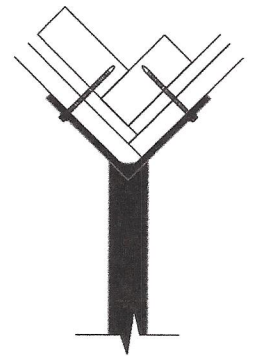


BLADE SIGN

- (2) 30" X 36" X 1-1/2" SINGLE FACE ROUTED HDU SANDBLASTED WOODGRAIN BACKGROUND
- LOGO AND EST. 1950 = 11-1/2" X 20"
- JOHNSON'S REAL ICE CREAM = 9-1/2" X 31"
- RAISED COPY GRAPHICS & 1-1/2" BORDER
- BOARDER & BACKGROUND TO MATCH PANTONE 7499 @ 90% BLACK COPY & GRAPHICS
- FACES MOUNTED BACK TO BACK TO ALUMINUM CENTER PLATE
- CUSTOM 9" X 4-1/5" X 4-1/2" X 1/4" ALUMINUM MOUNTING BRACKET
- 3" X 1-1/2" X 48" ALUMINUM TUBE PAINTED BLACK
- FASTENED AT 45 DEGREE ANGLE TO NORTHEAST CORNER OF ELEVATION
- WITH (4) 3/8" WOOD SCREWS WITH 1" MINIMUM EMBEDMENT
- (2) CUSTOM MOUNTING BRACKETS
- CHAINS & HARDWARE PAINTED BLACK
- (2) GOOSENECK LIGHTS ATTACHED TO HANG BAR PAINTED BLACK

BOARDER & BACKGROUND TO MATCH PANTONE 7499 @ 90%
MOUNTING BRACKET HARDWARE COPY AND GRAPHICS PAINTED SATIN BLACK



ALL SISTER'S SWEET SHOPPE WINDOW AND EXTERIOR SIGNAGE WILL BE REMOVED



THE DESIGNS AND/OR ENGINEERING CONCEPTS WITHIN THIS DOCUMENTATION WILL REMAIN THE EXCLUSIVE PROPERTY OF COLUMBUS SIGN COMPANY UNTIL APPROVED AND ACCEPTED THROUGH A FURNISH-OUT AGREEMENT BY CLIENT NAME. ON THESE DRAWINGS AND COLUMBUS SIGN COMPANY. A SEPARATE PURCHASE AGREEMENT WILL BE REQUIRED TO RELEASE THE RIGHTS OF THESE DRAWING ILLUSTRATIONS WITHIN THIS DOCUMENT. ALL COLOR AND ILLUSTRATIVE TECHNIQUES ARE FOR PRESENTATION ONLY.

JOHNSON'S ICE CREAM
55 W. Bridge St. Dublin OH

Gary\CHRIS\Johnsons Ice Cream\PDF

Project Layout
Approved _____
Approved as Noted

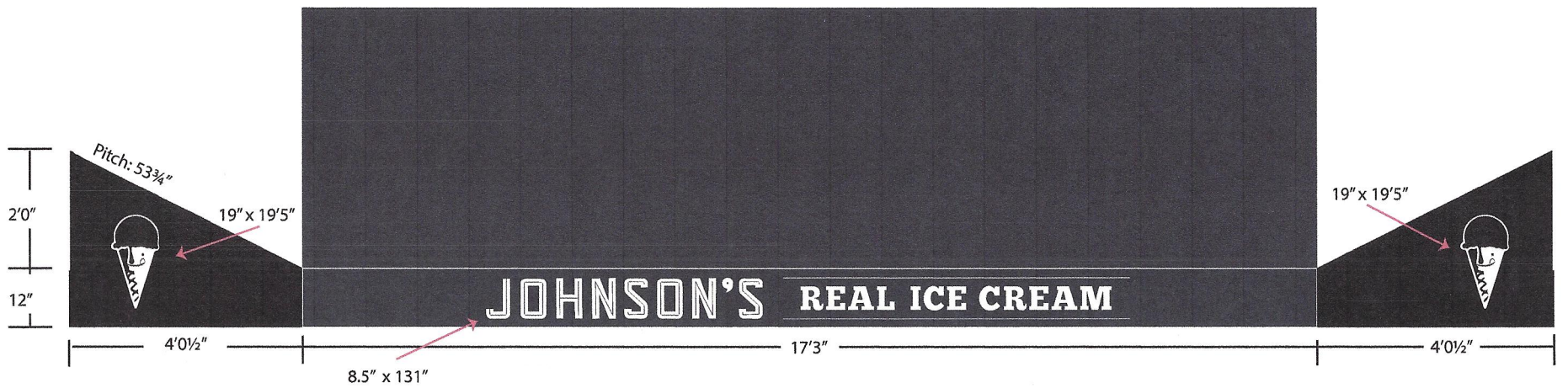
UL Yes No
Install per NEC 600
- Grounding
- Bonding

SALES DESIGN G HORN
DWG # 217-042
JOB # 000
CHRIS 03302017
01.3

1515 E. Fith Ave. Columbus OH 43219 Phone: 614.252-3133 Fax: 614.252.2494 www.ColumbusSign.com

FILE COPY





Capital City Awning
CANVAS PRODUCTS

capitalcityawning.com
614-221-5404
Fax: 614-365-9420

Salesperson: BG

Job Title:
Johnson's Real Ice Cream

• Fabric: Black Firesist

• Graphics: Cream

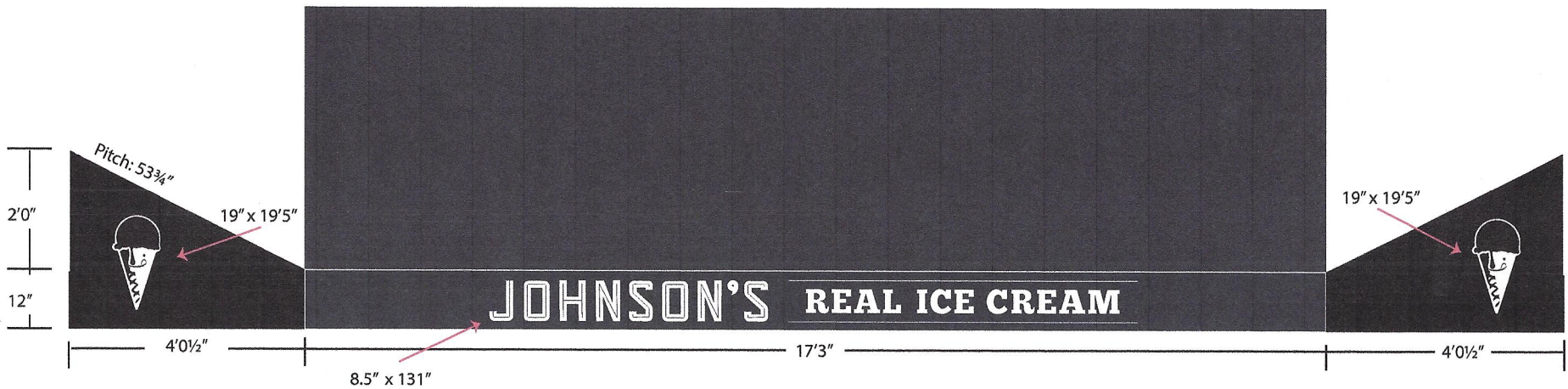
This file will be used to generate the graphics on your awning.
Review this mock-up carefully before giving us your approval.


Approval: _____

Date: _____

FILE COPY

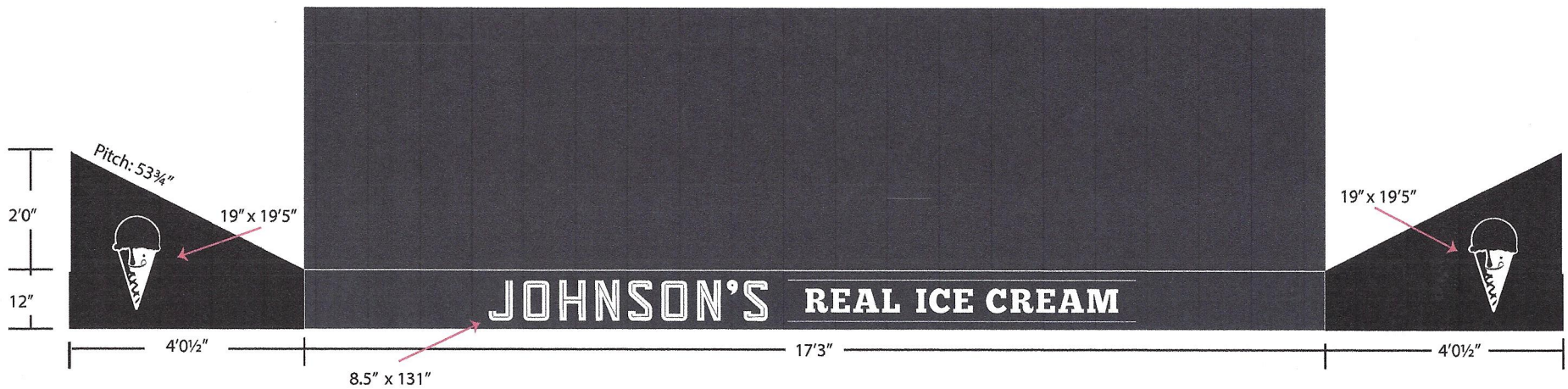
RECEIVED
17-030MSP
APR 03 2017
CITY OF DUBLIN
PLANNING



 <p>Capital City Awning CANVAS PRODUCTS</p> <p>capitalcityawning.com 614-221-5404 Fax: 614-365-9420</p> <p>Salesperson: BG</p>	<p>Job Title: Johnson's Real Ice Cream</p>	<ul style="list-style-type: none"> • Fabric: Black Firesist • Graphics: Cream 	<p>This file will be used to generate the graphics on your awning. Review this mock-up carefully before giving us your approval.</p> <p>Approval: _____</p> <p>Date: _____</p>
--	--	---	--

FILE COPY

RECEIVED
17-036MSP
APR 03 2017
CITY OF DUBLIN
PLANNING



Capital City Awning
CANVAS PRODUCTS

capitalcityawning.com
614-221-5404
Fax: 614-365-9420

Salesperson: BG

Job Title:
Johnson's Real Ice Cream

- Fabric: Black Firesist
- Graphics: Cream

This file will be used to generate the graphics on your awning.
Review this mock-up carefully before giving us your approval.

Approval: _____

Date: _____

FILE COPY

RECEIVED
17-030MSP
APR 03 2017
CITY OF DUBLIN
PLANNING



Google Earth



FILE COPY

RECEIVED
17-030MSP
APR 03 2017
CITY OF DUBLIN
PLANNING



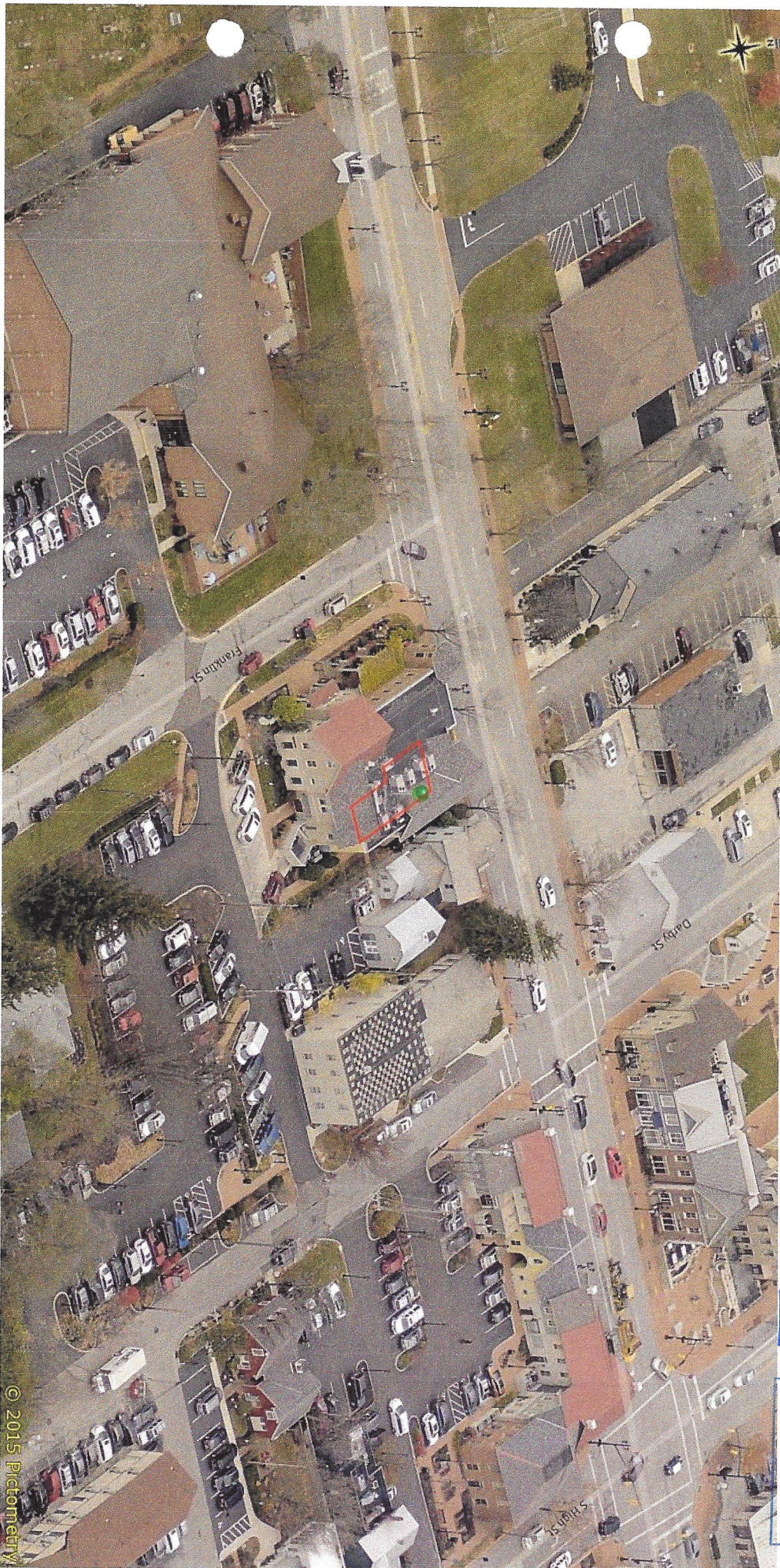
Google Earth



FILE COPY

RECEIVED
17-030MSP
APR 03 2017
CITY OF DUBLIN
PLANNING

55 W. Bridge Street

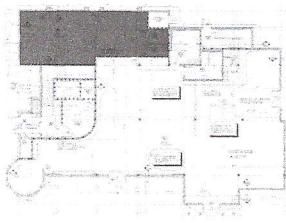
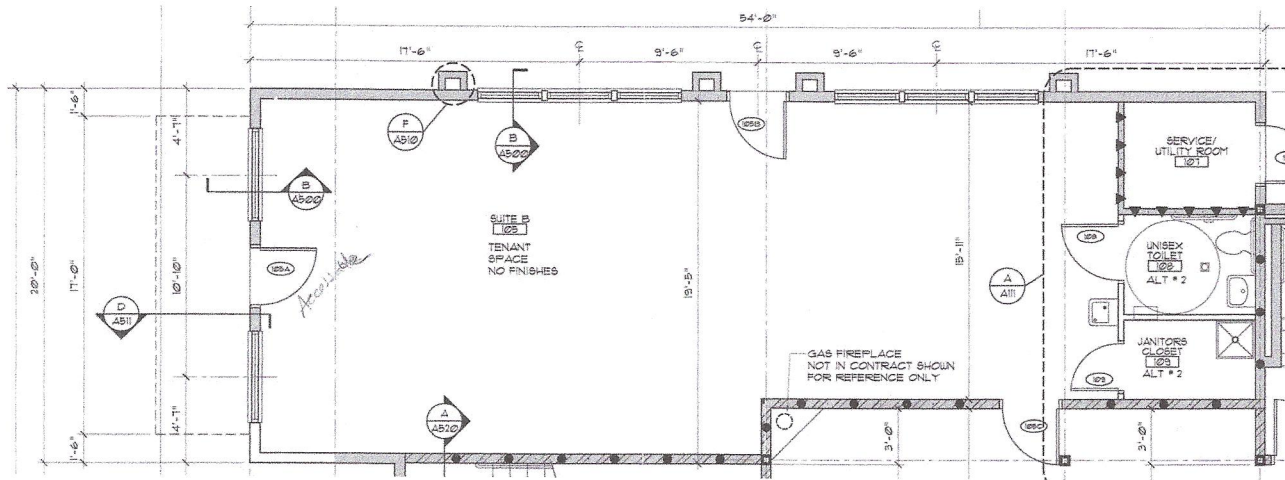


FILE COPY

RECEIVED
17-030MSP
APR 03 2017
CITY OF DUBLIN
PLANNING

© 2015 Pictometry

EXISTING PLAN



FILE COPY

RECEIVED
17-030MSP
APR 03 2017
CITY OF DUBLIN
PLANNING