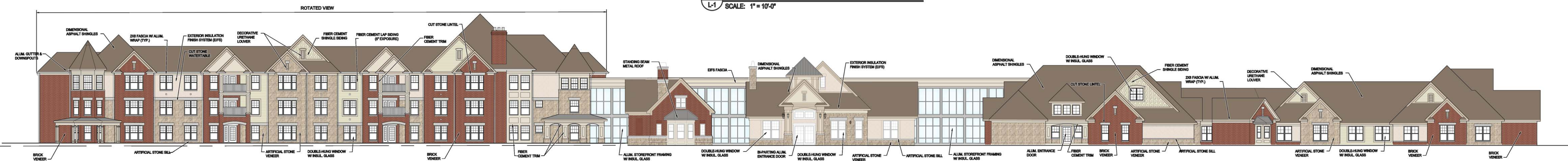
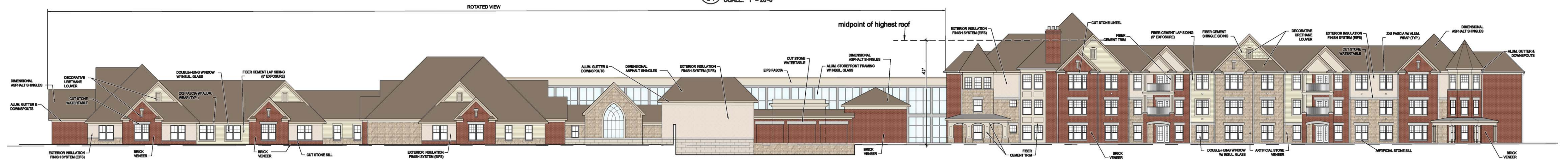


1A ENLARGED WEST ELEVATION
SCALE: 1" = 10'-0"



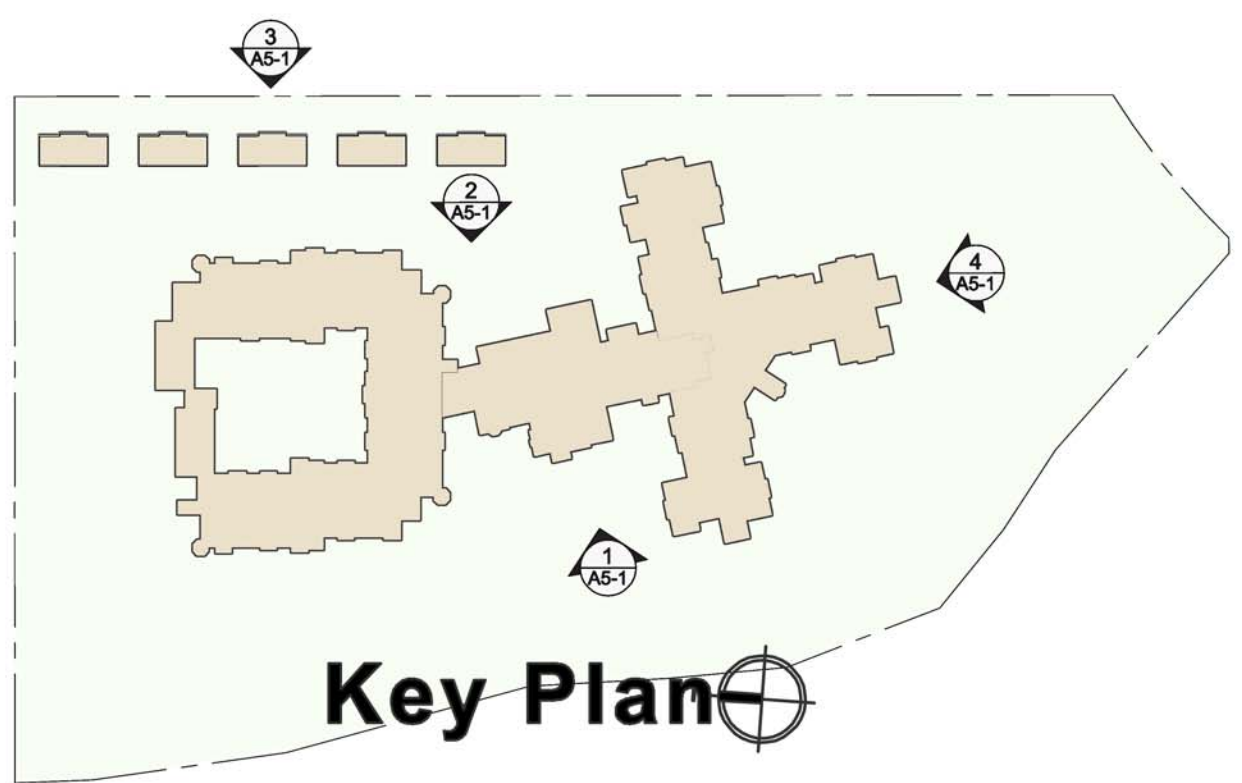
1 WEST ELEVATION
SCALE: 1" = 20'-0"



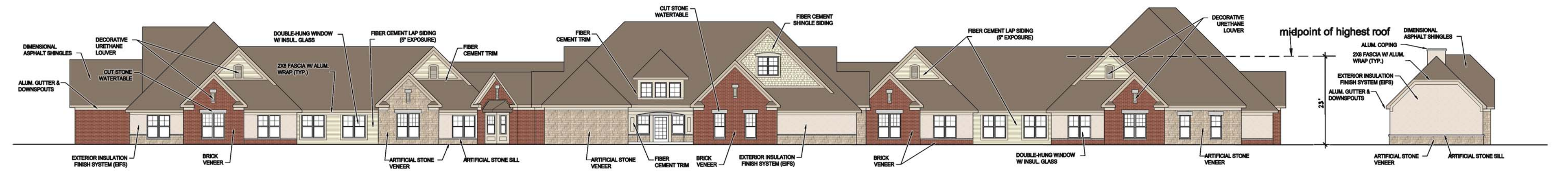
2 EAST ELEVATION
SCALE: 1" = 20'-0"



3 PARTIAL EAST ELEVATION
SCALE: 1" = 20'-0" (VIEW AT EAST PROPERTY LINE)



Key Plan



4 SOUTH ELEVATION
SCALE: 1" = 20'-0"

