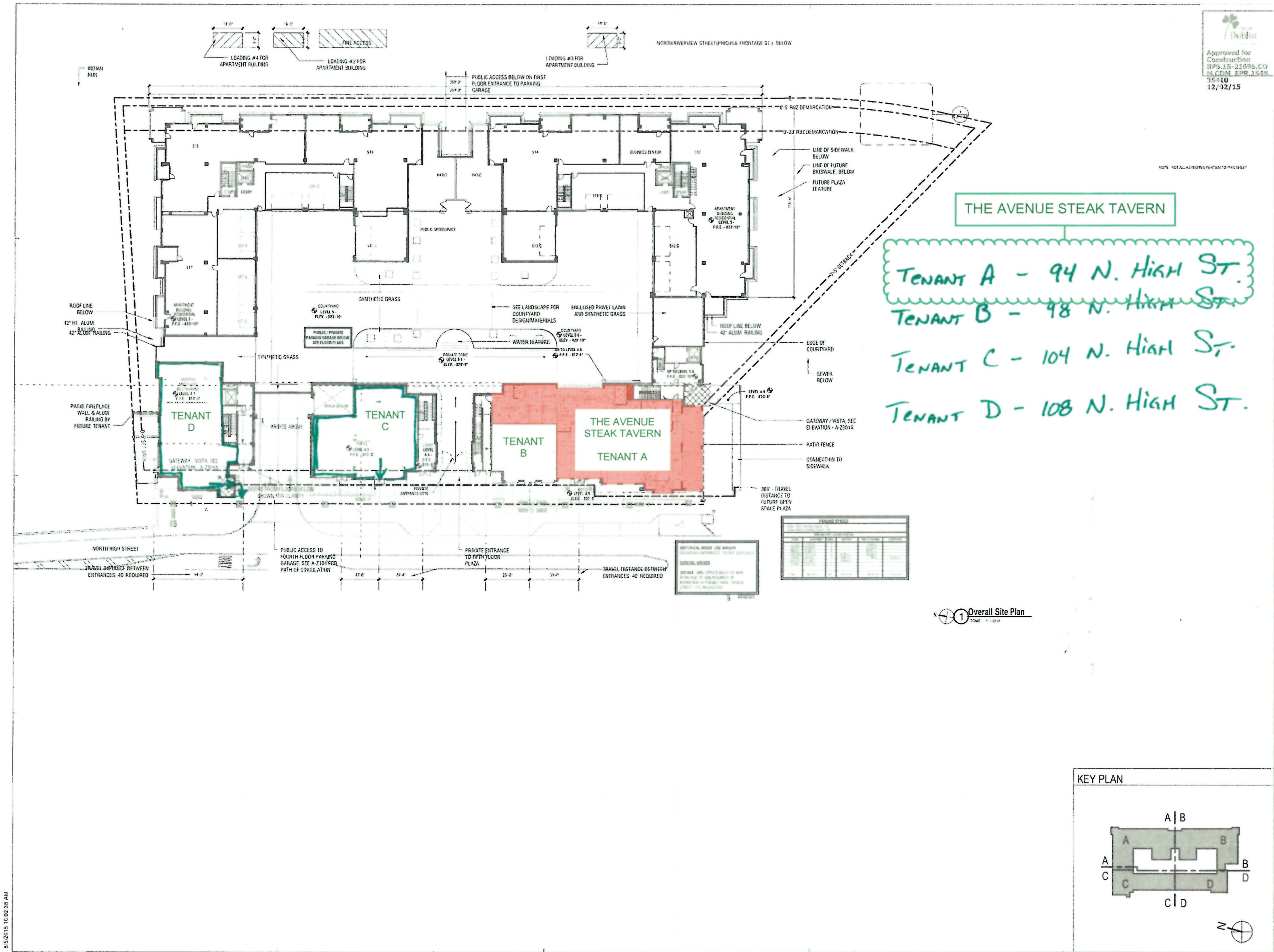


Approved for Construction  
 EPRS 15-21695.CO  
 19.COM EPR 1525  
 35410  
 12/02/15

BRIDGE PARK  
 CRAWFORD HOYING

THE AVENUE STEAK TAVERN

TENANT A - 94 N. HIGH ST.  
 TENANT B - 98 N. HIGH ST.  
 TENANT C - 104 N. HIGH ST.  
 TENANT D - 108 N. HIGH ST.

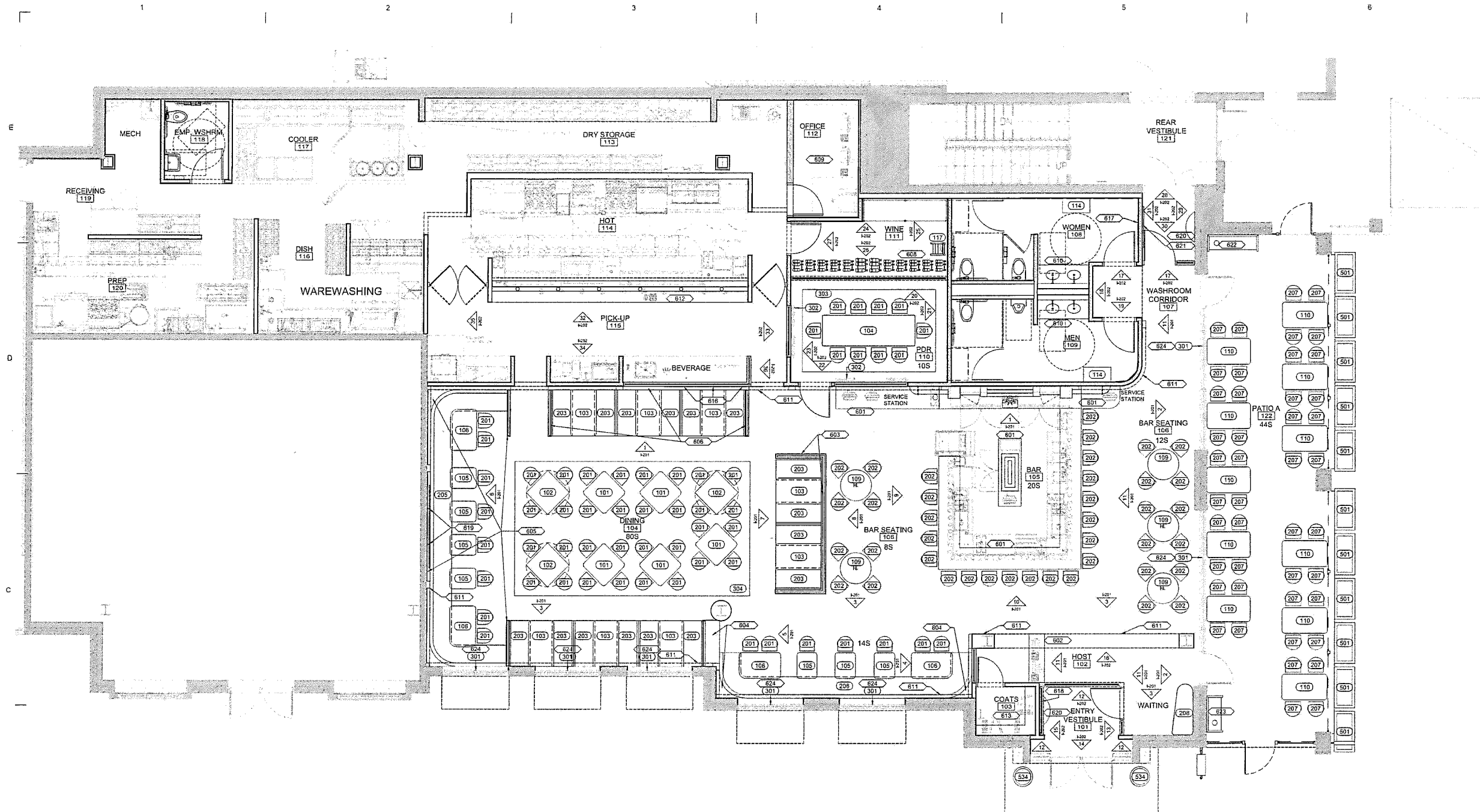


8/5/2015 10:02:38 AM

CRAWFORD HOYING DEVELOPMENT  
 BRIDGE PARK WEST - BUILDING Z - BUILDING PERMIT  
 OVERALL SITE PLAN  
 A-100

**BEAN**

1.0000 ARCHITECT  
 4400 N. RICHMOND AVE. SUITE 100  
 CHICAGO, IL 60630  
 TEL 614 262 5130  
 FAX 614 262 2527



FF&E SCHEDULE	
MARK	DESCRIPTION
101	36" x 36" DINING HEIGHT TABLE
102	36" x 36" DINING HEIGHT FLIP-TOP TABLE
103	30" x 54" DINING HEIGHT BOOTH TABLE
104	36" x 108" DINING HEIGHT TABLE
105	24" x 27" BANQUETTE DINING HEIGHT TABLE
106	36" x 48" RADIUS EDGE BANQUETTE DINING TABLE
107	NOT USED
108	NOT USED
109	36" BAR HEIGHT TABLE
110	32" x 52" PATIO DINING TABLE
111	NOT USED
112	NOT USED
113	NOT USED
114	TABLE IN RESTROOM
115	NOT USED
116	NOT USED
117	WINE STEP LADDER
201	DINING CHAIR
202	BAR STOOL
203	54" PULLMAN BOOTH
204	NOT USED
205	BANQUETTE
206	BANQUETTE
207	PATIO DINING CHAIR
208	48" WIDE BENCH
209	NOT USED
301	WOOD BLINDS @ STOREFRONT
302	DRAPERY @ PDR
303	AREA RUG @ PDR
304	AREA RUG @ DINING

FF&E SCHEDULE	
MARK	DESCRIPTION
501	EXTERIOR PLANTER @ PATIO
502	ART
503	ART
504	ART
505	ART
506	ART
507	ART
508	ART
509	ART
510	CANVAS ART (20"W x 36"H)
511	ART
512	ART
513	ART
514	ART
515	ART
516	ART
517	CANVAS ART (30"W x 44"H)
518	CANVAS ART (30"W x 44"H)
519	CANVAS ART (42"W x 28"H)
520	CANVAS ART (24"W x 30"H)
521	ART
522	ART
523	ART
524	CANVAS ART (24"W x 29"H)
525	ART
526	ART
527	ART
528	DOLLAR BILL ART @ BACK BAR
529	FRAMED ACCOLADES @ REAR VESTIBULE
530	ART IN WOMEN'S
531	ART IN MEN'S
532	WINE DECANTERS ON BACK BAR
533	COCKTAIL SHAKERS ON BACK BAR
534	21" EXTERIOR PLANTER @ ENTRY

MILLWORK SCHEDULE	
MARK	DESCRIPTION
601	BAR, BACK BAR, & SERVICE
602	HOST STAND
603	LOW WALL & GLASS DIVIDER @ BAR SEATING
604	BOOTH DECK @ BANQUETTE SEATING
605	BOOTH DECK @ LONG BANQUETTE SEATING @ BACK WALL
606	BOOTH DECK & GLASS DIVIDER @ PULLMAN BOOTH
607	TYPICAL WALL PANELING
608	WINE DISPLAY COOLER
609	OFFICE
610	MEN'S & WOMEN'S WASHROOM VANITY
611	TYPICAL ARCH & WOOD COLUMN DETAIL
612	PICK-UP COUNTER
613	COAT ROOM
614	INTERIOR TABLE TOP DETAIL
615	EXTERIOR TABLE TOP DETAIL
616	MENU BOARDS
617	MIRROR IN WOMEN'S WASHROOM
618	MIRROR STEEL WINDOWS @ ENTRY VESTIBULE
619	SUPPORT FOR AIRWORK (S1W)
620	WALL-MOUNT DEMILUNE TABLE
621	LOGO WALL PANEL BOARD FOR HANGING ART @ REAR VESTIBULE
622	EXTERIOR SERVICE STATION (60"W)
623	EXTERIOR SERVICE STATION (42"W)
624	FIXED TRANSOM SHUTTERS @ STOREFRONT

**FLOOR FIXTURE PLAN**  
 1/4" = 1'-0"

01/25/17	ISSUED FOR BID	
06/23/17	ARE SUBMISSION	
06/21/17	REISSUED FOR PERMIT	
02/07/17	ISSUED FOR PERMIT	
11/15/16	REISSUED FOR DD	
MARK	DATE	DESCRIPTION
ISSUED		

**DUBLIN STEAKHOUSE**

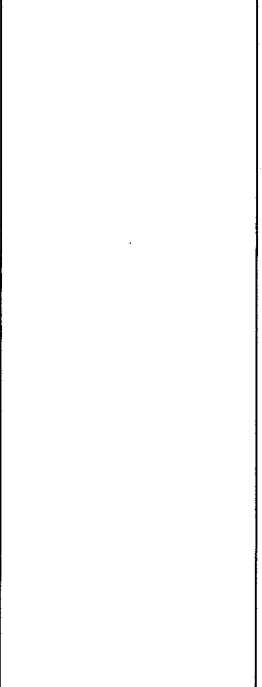
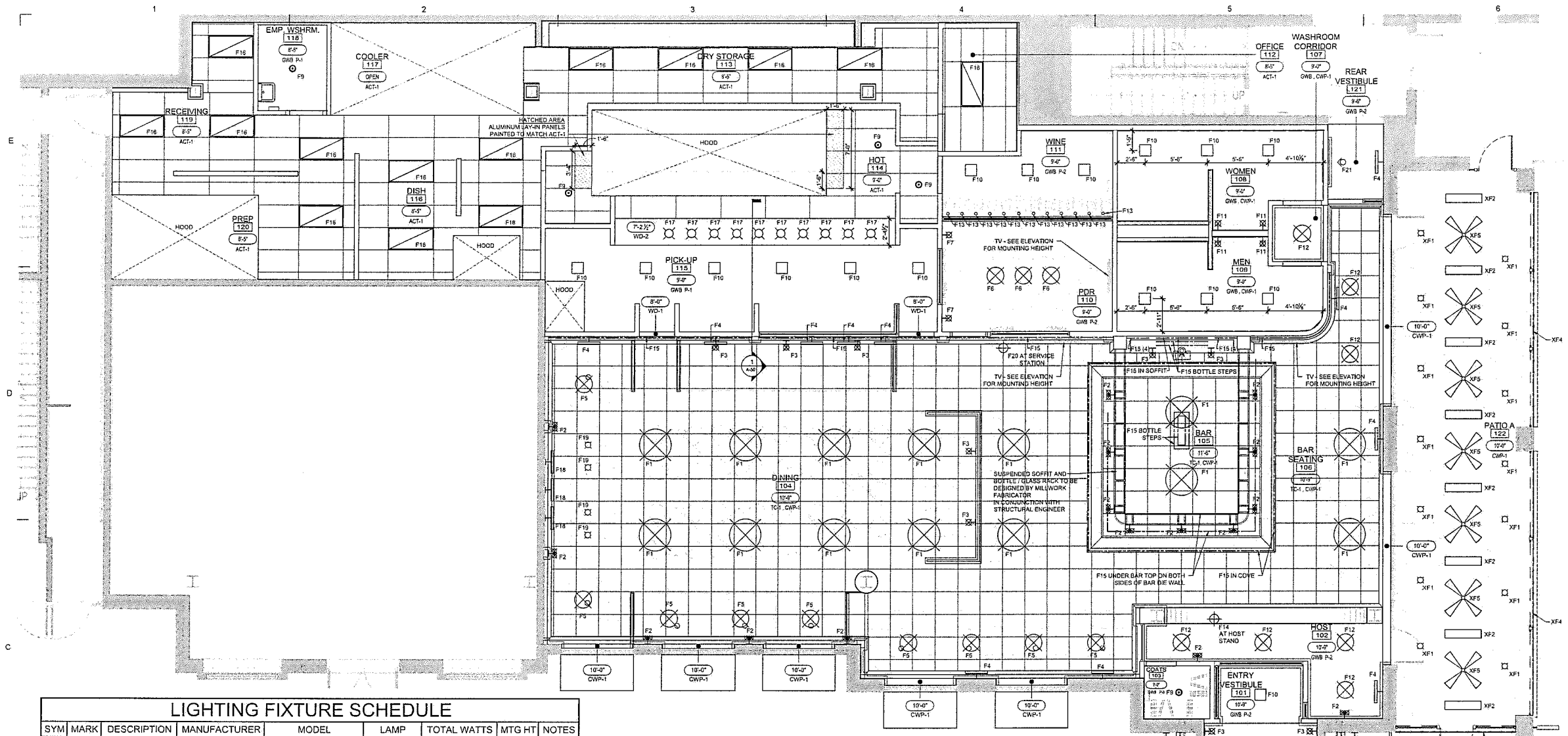
94 NORTH HIGH STREET  
 DUBLIN, OH 43017

PROJECT NO	3296
CAD DWG FILE	1106-DUBLN-STEAKHOUSE-DUBLN-PLAN-FLOOR-FIXTURE
DRAWN BY	PLJ/AC
CHKD BY	

COPYRIGHT: © 2017 KNAUF INCORPORATED. ALL DRAWINGS AND WRITTEN MATERIAL APPEARING HEREON CONSTITUTE THE ORIGINAL AND UNPUBLISHED WORK OF KNAUF INCORPORATED AND THE SAME MAY NOT BE REPRODUCED OR TRANSMITTED IN ANY FORM OR BY ANY MEANS, ELECTRONIC OR MECHANICAL, WITHOUT THE WRITTEN CONSENT OF KNAUF INCORPORATED.

**SHEET TITLE**  
**FIXTURE FLOOR PLAN**

**I-101**



SYM	MARK	DESCRIPTION	MANUFACTURER	MODEL	LAMP	TOTAL WATTS	MTG HT	NOTES
F1	⊗	LARGE PENDANT	CIRCA LIGHTING	SMALL FARGLASS CHANDELIER TOB814	(1) 2W LIFEBULB PLT-10130 LED FILAMENT TYPE CANDELABRA 2200K DIMMABLE	12 W	11'-2" TO 13'	REFER TO INTERIOR ELEVATIONS
F2	⊗	WALL SCOURCE DOUBLE	CIRCA LIGHTING	ELKINS DOUBLE SOURCE TOB265	(2) 2W LIFEBULB PLT-10130 LED FILAMENT TYPE CANDELABRA 2200K DIMMABLE	4 W	1'-2" TO 3.4'	REFER TO INTERIOR ELEVATIONS
F3	⊗	SMALL WALL SCOURCE AT BOOTHS	CIRCA LIGHTING	ALTON PIVOTING SOURCE TOB265	(1) 2W LIFEBULB PLT-10130 LED FILAMENT TYPE CANDELABRA 2200K DIMMABLE	2.5 W	1'-2" TO 3.4'	REFER TO INTERIOR ELEVATIONS
F4	⊗	PICTURE LIGHT	CIRCA LIGHTING	DAVID PIVOTING ART LIGHT TOB201	(1) 2W LIFEBULB PLT-10130 LED FILAMENT TYPE CANDELABRA 2200K DIMMABLE	8 W	1'-2" TO 4" TO 11'	REFER TO INTERIOR ELEVATIONS
F5	⊗	LIGHT OVER U BOOTHS	CIRCA LIGHTING	GOODMAN SMALL HANGING LIGHT TOB 5000 HMB NPS	(1) 2W LIFEBULB PLT-10130 LED FILAMENT TYPE CANDELABRA 2200K DIMMABLE	2.5 W	1'-2" TO 3" TO 10'	REFER TO INTERIOR ELEVATIONS
F6	⊗	WALL SCOURCE AT DINING B	CIRCA LIGHTING	GOODMAN SMALL HANGING LIGHT TOB 5000 HMB HMB	(1) 2W LIFEBULB PLT-10130 LED FILAMENT TYPE CANDELABRA 2200K DIMMABLE	2.5 W	1'-2" TO 3.4'	REFER TO INTERIOR ELEVATIONS
F7	⊗	WALL SCOURCE IN SMALL DINING ROOM	CIRCA LIGHTING	GERWAK SINGLE SOURCE TORJ138214AB-S	(1) 2W LIFEBULB PLT-10130 LED FILAMENT TYPE CANDELABRA 2200K DIMMABLE	2 W	1'-2" TO 4"	REFER TO INTERIOR ELEVATIONS
F8		NOT USED						
F9	⊗	RECESSED LIGHT (BOX)	PORTFOLIO-COPPER LIGHTING	GRID RECESSED 100 LUMEN 2700K LED DOWNLIGHT	100W-100/10116-ERM4413-80 1" H 2700K LED	16 W	1'-2" TO 3'	
F10	⊗	SQUARE FIXTURE	CIRCA LIGHTING	MENIER SQUARE BOX LIGHT TOB704	(1) 2W LIFEBULB PLT-10130 LED FILAMENT TYPE CANDELABRA 2200K DIMMABLE	12 W	1'-2" TO 3'	
F11	⊗	WALL SCOURCE AT RESTROOM	CIRCA LIGHTING	CYLINDER SOURCE S 20062-RWG	(1) 2W LIFEBULB PLT-10130 LED FILAMENT TYPE CANDELABRA 2200K DIMMABLE	2 W	1'-2" TO 3.4'	REFER TO INTERIOR ELEVATIONS
F12	⊗	LIGHT IN CORRIDOR	CIRCA LIGHTING	HILDEN FLUSH MOUNT TOB4130	(2) 2W LIFEBULB PLT-10130 LED FILAMENT TYPE CANDELABRA 2200K DIMMABLE	5 W	1'-2" TO 3.4'	

SYM	MARK	DESCRIPTION	MANUFACTURER	MODEL	LAMP	TOTAL WATTS	MTG HT	NOTES
F13	⊗	RECESSED LIGHT AT WINE	CCL CREATIVE SYSTEMS LIGHTING	ECO DOWNLIGHT LED EDLM - BR - LWW - HC - 2 EDLM - 1001 - 1 2" ROUND TRIM	(1) 14W 2500K CRH CR DIMMABLE LED INTEGRAL	14 W	1'-2" TO 3.4'	
F14	⊗	LAMP AT HOST	CIRCA LIGHTING	TICO TABLE LAMP TOB3006	(1) 2W LIFEBULB PLT-10130 LED FILAMENT TYPE CANDELABRA 2200K DIMMABLE	2.5 W	1'-2" TO 3.4'	
F15	⊗	LED TAPE LIGHT	LUMINR	LL 18 2200K	1.5 W / LF	1.5 W	1'-2" TO 3.4' TO 5.6'	
F16	⊗	24" GRID MOUNTED TROFFER	GOOPER	24" EN-LED-40-VOL-TAGE-LED-1 3200K - INTEGRAL		40 W	1'-3'	
F17	⊗	HEAT LAMP	HATCO	DL5240001 600 BLACK (50/50/50)	120V 250W RED CONTROL BULB	250 W	3'-8"	
F18	⊗	ART LIGHT	HOUSE OF TROY	USLEC222-91 ULTRA ULTRALINE LED CA RUBBED BRONZE 720 LUMENS (INCLUDED)	LED 9W 2700K 80-CRI 720 LUMENS (INCLUDED)	9 W	REFER TO MILLWORK DETAIL 419	1, 2, 3, 4, 11
F19	⊗	RECESSED LIGHT AT DINING ROOM BANQUETTE	KURT VERSEN	A4146-10-27-VOLTAGE-DE-30 2700K LED RECESSED 4" ROUND 100 LUMEN 2700K LED 22" ADJUSTABLE DOWNLIGHT	(INTEGRATED)	15 W	1'-2" TO 3'	
F20	⊗	LAMP AT BAR SERVICE	CIRCA LIGHTING	CARLO TABLE LAMP TOB3190	(1) 2W LIFEBULB PLT-10130 LED FILAMENT TYPE CANDELABRA 2200K DIMMABLE	2.5 W	1'-2" TO 3.4'	
F21	⊗	WALL WASHER	ELEMENT	CITIZEN HIGH OUTPUT E3H-LV-14927-N4019 TRIM: E3H-LV-WZ-LED	CITIZEN 95 CRI 2700K HIGH OUTPUT INTEGRATED	18 W	1'-2" TO 3'	
F22	⊗	RECESSED LIGHTING	GOOPER LIGHTING - PORTFOLIO	LD44-18-01016-ERM4413-80 1" H 2700K LED	(1) 2W LIFEBULB PLT-10130 LED FILAMENT TYPE CANDELABRA 2200K DIMMABLE	22 W	1'-2" TO 3'	
F23	⊗	HEATER	INFRA TECH	W-SERIES HEATER 10224		2500 W		
F24	⊗	WALL SCOURCE	CIRCA LIGHTING	SACKETT LARGE SOURCE RL 210782 BRONZE WITH FROSTED SAFETY GLASS	(4) 2W LIFEBULB PLT-10130 LED FILAMENT TYPE CANDELABRA 2200K DIMMABLE	9 W		
F25	⊗	MARQUEE LIGHTING	STARFIRE LIGHTS, INC.	22 1/2" MARQUEE LIGHT 12" MB WP	3W PLT K8158350020K LED FILAMENT - S1 45 - 2200K - DIMMABLE	3W / LF	1'-2" TO 3' TO 5'	
F26	⊗	OUTDOOR CEILING FAN	HUNTER	OUTDOOR ORIGINAL HUNTER ORIGINAL 12" CEILING FAN MODEL 23M63		85 WATTS	1'-2" TO 3' TO 6'	

**REFLECTED CEILING PLAN**  
 1/4" = 1'-0"

**LIGHTING FIXTURE SCHEDULE GENERAL NOTES:**

- THE ELECTRICAL CONTRACTOR SHALL BE RESPONSIBLE FOR SUPPLYING SHOP DRAWINGS OF THE SPECIFIED EQUIPMENT FOR APPROVAL TO THE ARCHITECT ON A TIMELY BASIS.
- SOME LIGHTING FIXTURES MAY REQUIRE LONGER LEAD TIMES, AND THE ELECTRICAL CONTRACTOR IS RESPONSIBLE FOR ALLOWING SUFFICIENT TIME FOR ORDER PLACEMENT, SUBMITTAL REVIEW, AND ORDER RELEASE.
- SUBSTITUTIONS FOR THE SPECIFIED LIGHTING PRODUCTS ARE NOT ACCEPTABLE AND WILL NOT BE CONSIDERED. FAILURE TO INCLUDE ONE OF THE SPECIFIED PRODUCTS AS A PART OF THE BASE BID MAY, AT THE DISCRETION OF THE OWNER, INVALIDATE THE ENTIRE LIGHTING PRODUCT BID AND EXCLUDE THE CONTRACTOR FROM FURTHER CONSIDERATION.
- UNIT PRICING SHOULD BE MADE AVAILABLE ON ALL SPECIFIED LIGHTING FIXTURES.
- REFER TO ELEVATION, AND MILLWORK DRAWINGS FOR ADDITIONAL LIGHT LOCATION INFORMATION.
- FOR ADDITIONAL FIXTURES LIKE EXIT SIGNS & EMERGENCY LIGHTS PLEASE REFER TO ELECTRICAL DRAWINGS.

**LIGHTING FIXTURE SCHEDULE KEYNOTES:**

- FURNISHED BY OWNER, WIRED, ASSEMBLED AND INSTALLED BY ELECTRICAL CONTRACTOR. LAMPS FOR ALL LIGHTING FIXTURES PROVIDED BY OWNER
- ON DIMMER CONTROL
- FURNISH WITH ALL NECESSARY LEADS, COVERS, CONNECTORS AND FITTING FOR A COMPLETE OPERATING SYSTEM
- COORDINATE WITH MILLWORK CONTRACTOR
- PROVIDE FIXTURE AS REQUIRED TO MOST CLOSELY FIT ENTIRE RUN IN CONTINUOUS LENGTHS, END-TO-END
- MOUNT TRANSFORMER INDOORS ABOVE CEILING
- CONCEAL REMOTE TRANSFORMER(S) IN ACCESSIBLE LOCATION(S) AND PROVIDE VENTILATION
- FURNISHED BY KEC, WIRED, ASSEMBLED, AND INSTALLED BY ELECTRICAL CONTRACTOR
- PROVIDE COVER GLASS TO MEET HEALTH DEPARTMENT REQUIREMENTS
- COORDINATE LENGTH OF CHAIN(S) WITH CEILING HEIGHT AND MOUNTING HEIGHT
- MODIFY TO HARDWARE AS REQUIRED OR PROVIDE CLOCK OUTLET

GENERAL SIGNAGE NOTE  
 SIGNAGE AND AWNINGS ARE SHOWN HEREIN FOR REFERENCE ONLY. APPLICANT UNDERSTANDS THAT THESE ITEMS MUST COMPLY WITH THE APPROVED MASTER SIGN PLAN AND BE PERMITTED ACCORDINGLY.

DATE	DESCRIPTION
08/29/17	ANS SUBMISSION
09/20/17	REVISED FOR BID
09/21/17	ISSUED FOR PERMIT
09/22/17	ISSUED FOR PERMIT
11/15/19	REVISED FOR DD

**DUBLIN STEAKHOUSE**  
 94 NORTH HIGH STREET  
 DUBLIN, OH 43017

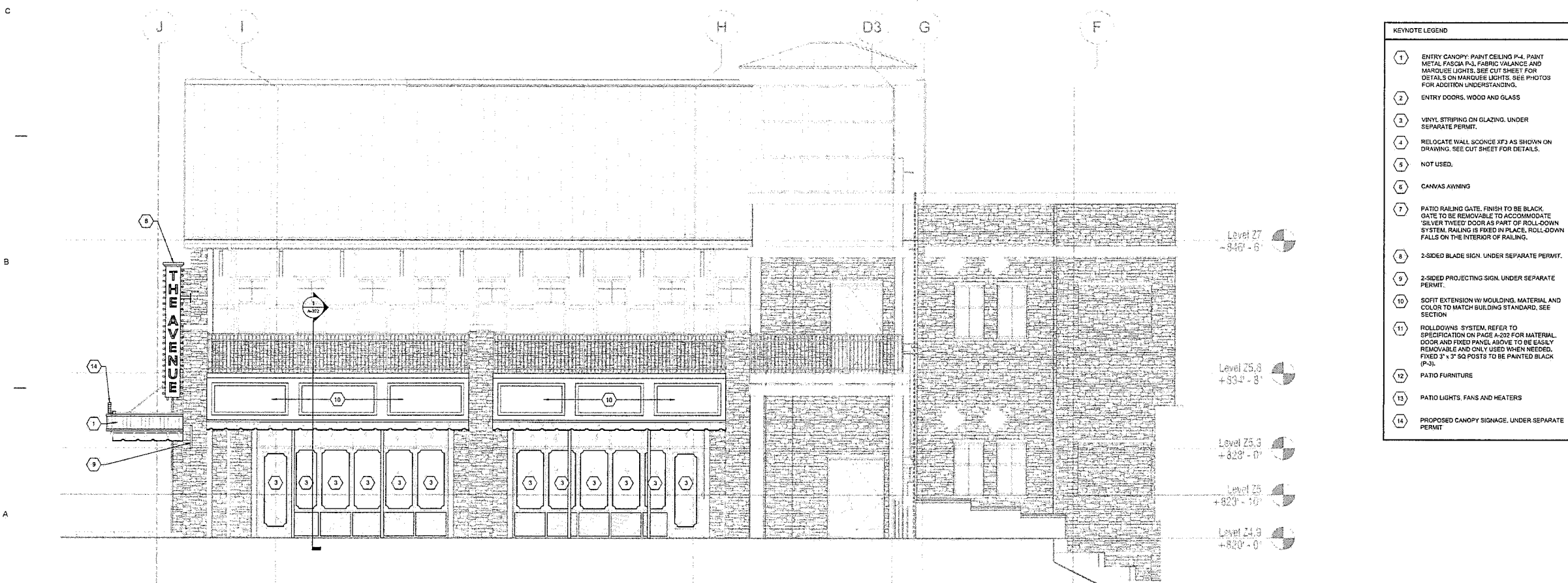
PROJECT NO.	DATE	DESCRIPTION
3226		

**REFLECTED CEILING PLAN**





1 WEST ELEVATION  
 1/4" = 1'-0"



2 SOUTH ELEVATION  
 1/4" = 1'-0"

KEYNOTE LEGEND	
1	ENTRY CANOPY: PAINT CEILING P-4, PAINT METAL FASCIA P-3, FABRIC VALANCE AND MARQUEE LIGHTS. SEE CUT SHEET FOR DETAILS ON MARQUEE LIGHTS. SEE PHOTOS FOR ADDITION UNDERSTANDING.
2	ENTRY DOORS, WOOD AND GLASS
3	VINYL STRIPING ON GLAZING. UNDER SEPARATE PERMIT.
4	RELOCATE WALL SOUNDRY XF3 AS SHOWN ON DRAWING. SEE CUT SHEET FOR DETAILS.
5	NOT USED.
6	CANVAS AWNING
7	PATIO RAILING GATE. FINISH TO BE BLACK. GATE TO BE REMOVABLE TO ACCOMMODATE 'SILVER TYPED' DOOR AS PART OF ROLL-DOWN SYSTEM. RAILING IS FIXED IN PLACE. ROLL-DOWN FALLS ON THE INTERIOR OF RAILING.
8	2-SIDED BLADE SIGN. UNDER SEPARATE PERMIT.
9	2-SIDED PROJECTING SIGN. UNDER SEPARATE PERMIT.
10	SOFT EXTENSION W/ MULDING, MATERIAL AND COLOR TO MATCH BUILDING STANDARD. SEE SECTION
11	ROLLODOWNS SYSTEM. REFER TO SPECIFICATION ON PAGE A-202 FOR MATERIAL, DOOR AND FIXED PANEL ABOVE TO BE EASILY REMOVABLE AND ONLY USED WHEN NEEDED. FIXED 3" x 3" SQ POSTS TO BE PAINTED BLACK (P-3).
12	PATIO FURNITURE
13	PATIO LIGHTS, FANS AND HEATERS
14	PROPOSED CANOPY SIGNAGE. UNDER SEPARATE PERMIT

GENERAL SIGNAGE NOTE  
 SIGNAGE AND AWNINGS ARE SHOWN HEREIN FOR REFERENCE ONLY. APPLICANT UNDERSTANDS THAT THESE ITEMS MUST COMPLY WITH THE APPROVED MASTER SIGN PLAN AND BE PERMITTED ACCORDINGLY.

DATE	DESCRIPTION
06/20/17	ARB SUBMISSION
08/29/17	RESUBMITTED FOR BID
09/27/17	ISSUED FOR PERMIT
03/20/17	ISSUED FOR PERMIT
11/19/16	RESUBMITTED FOR DD

**DUBLIN STEAKHOUSE**  
 94 NORTH HIGH STREET  
 DUBLIN, OH 43017

PROJECT NO.	3296
CAD DWG FILE:	1706-DUBLIN STEAKHOUSE-0200-DRAWN
DRAWN BY:	JOHN KNAUER
CHECKED BY:	

**EXTERIOR ELEVATIONS**

**A-201**

1. DUBLIN STEAKHOUSE, DUBLIN, OHIO. ALL DIMENSIONS AND NOTES ARE TO BE USED AS A GUIDE ONLY. THE ARCHITECT ASSUMES NO LIABILITY FOR THE ACCURACY OF THE INFORMATION PROVIDED HEREIN. THE ARCHITECT'S OFFICE SHALL NOT BE RESPONSIBLE FOR THE ACCURACY OF THE INFORMATION PROVIDED HEREIN. THE ARCHITECT'S OFFICE SHALL NOT BE RESPONSIBLE FOR THE ACCURACY OF THE INFORMATION PROVIDED HEREIN.



- KEYNOTE LEGEND**
- 1 ENTRY CANOPY: PAINT CEILING P-4, PAINT METAL FASCIA P-3, FABRIC VALANCE AND MARQUEE LIGHTS. SEE CUT SHEET FOR DETAILS ON MARQUEE LIGHTS. SEE PHOTOS FOR ADDITIONAL UNDERSTANDING.
  - 2 ENTRY DOORS, WOOD AND GLASS
  - 3 VINYL STRIPING ON GLAZING UNDER SEPARATE PERMIT.
  - 4 RELOCATE WALL SCIENCE XFS AS SHOWN ON DRAWING. SEE CUT SHEET FOR DETAILS.
  - 5 NOT USED.
  - 6 CANVAS AWNING WITH LOGO. LOGO REVIEW UNDER SEPARATE PERMIT.
  - 7 PATIO RAILING GATE. FINISH TO BE BLACK. GATE TO BE REMOVABLE TO ACCOMMODATE 'SILVER TWEED' DOOR AS PART OF ROLL-DOWN SYSTEM. RAILING IS FIXED IN PLACE. ROLL-DOWN FALLS ON THE INTERIOR OF RAILING.
  - 8 2-SIDED BLADE SIGN. UNDER SEPARATE PERMIT.
  - 9 2-SIDED PROJECTING SIGN. UNDER SEPARATE PERMIT.
  - 10 SOFT EXTENSION W/ MOLDING, MATERIAL AND COLOR TO MATCH BUILDING STANDARD. SEE SECTION.
  - 11 ROLLDOWNS SYSTEM REFER TO SPECIFICATION ON PAGE A-202 FOR MATERIAL, DOOR AND FIXED PANEL ABOVE TO BE EASILY REMOVABLE AND ONLY USED WHEN NEEDED. FIXED 3" x 3" SQ POSTS TO BE PAINTED BLACK (P-3).
  - 12 PATIO FURNITURE
  - 13 PATIO LIGHTS, FANS AND HEATERS
  - 14 PROPOSED CANOPY SIGNAGE, UNDER SEPARATE PERMIT



2 SOUTH ELEVATION - ROLL DOWN  
 1/4" = 1'-0"

## DROP SCREEN/SUN SHADE SPECIFICATIONS

**Drop Screens:** System: Corradi USA - SL135 hand crank system, Shy zip tracks, 8" woven acrylic borders with clear vinyl windows. Continuous welded connection between acrylic borders and clear inset vinyl. Finish housing and tracks to match patio columns.

**Woven Acrylic Borders:** Tempolest USA - Tempolest Marine with 10 year warranty, T40779-60 'Silver Tweed'.

**Clear Vinyl:** O'Sullivan Films - O'Sea clear vinyl, .030 gauge, Marine Grade

**Sun Shades:** System: Mechosystems - Mecho/5 with manual operation, Finish housing to match patio columns.

**Shadecloth:** ThermoVeil - Basket Weave 2100 'black/brown' (10% open). Provide clips at base of cloth for securing to ground when lowered.

**GENERAL SIGNAGE NOTE**  
 SIGNAGE AND AWNINGS ARE SHOWN HEREIN FOR REFERENCE ONLY. APPLICANT UNDERSTANDS THAT THESE ITEMS MUST COMPLY WITH THE APPROVED MASTER SIGN PLAN AND BE PERMITTED ACCORDINGLY.

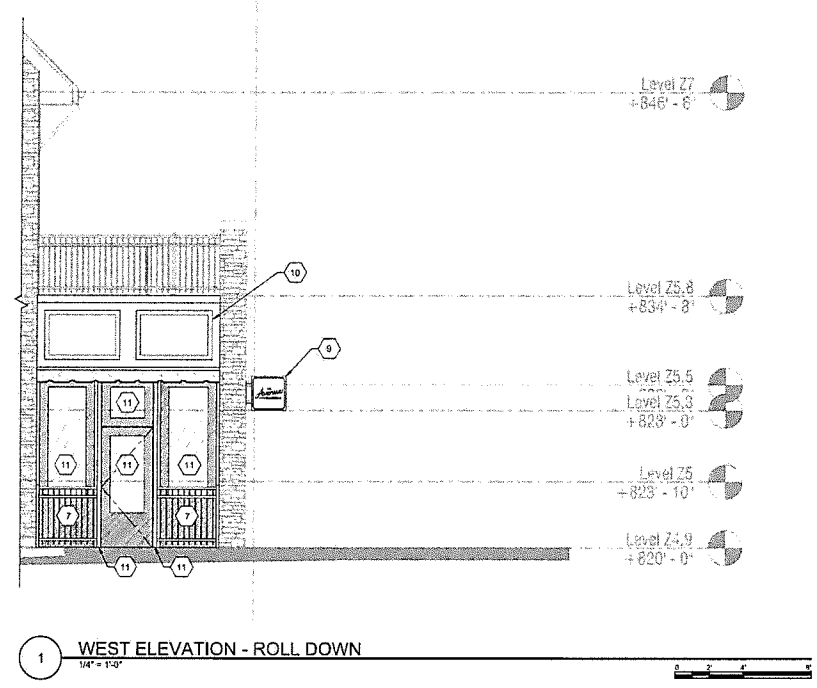
MARK	DATE	DESCRIPTION
9/23/17		ARB SUBMISSION
9/29/17		REISSUED FOR BID
10/2/17		ISSUED FOR PERMIT
10/19/17		ISSUED FOR PERMIT
11/15/18		REISSUED FOR BID

**DUBLIN STEAKHOUSE**  
 94 NORTH HIGH STREET  
 DUBLIN, OH 43017

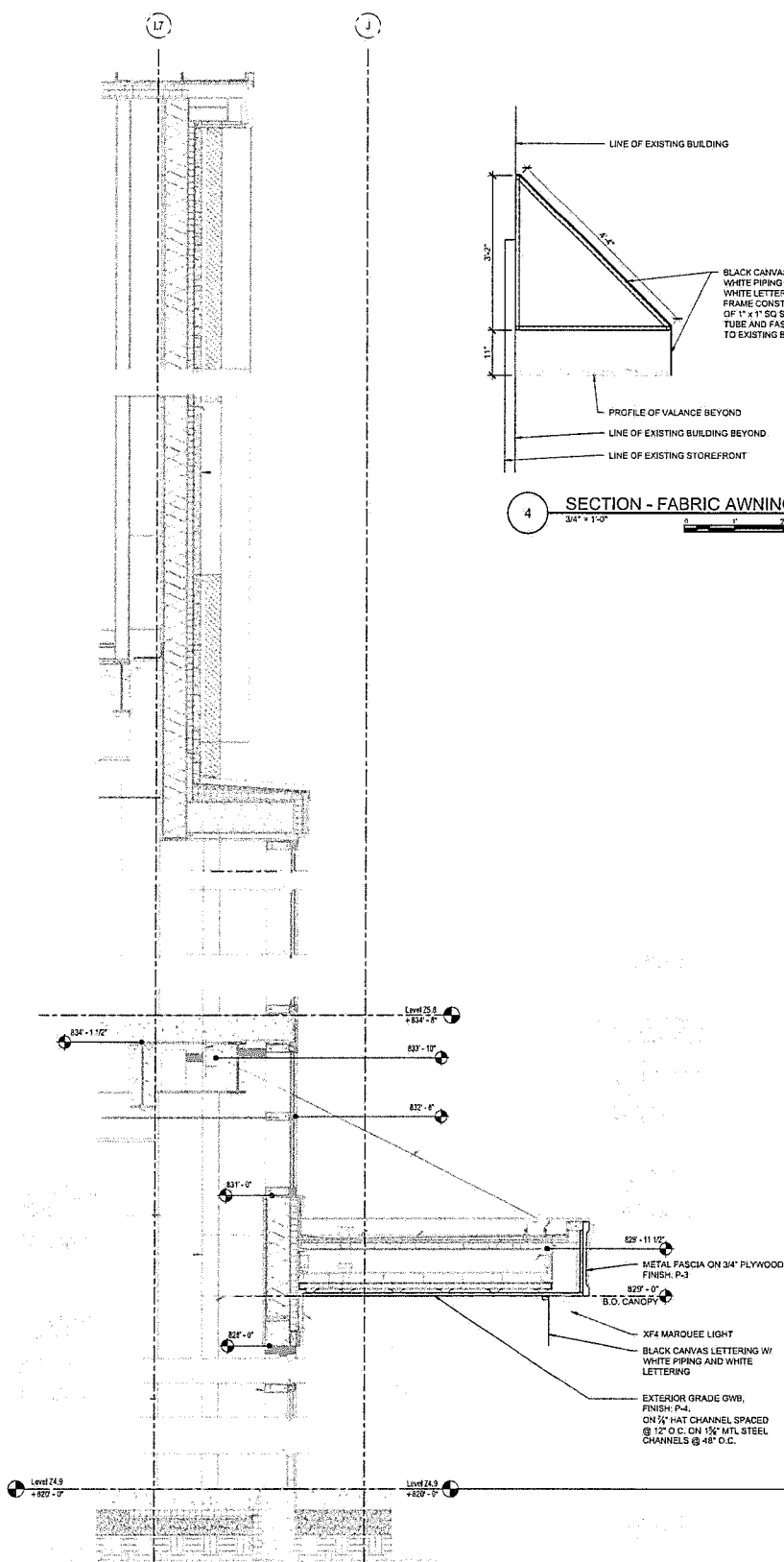
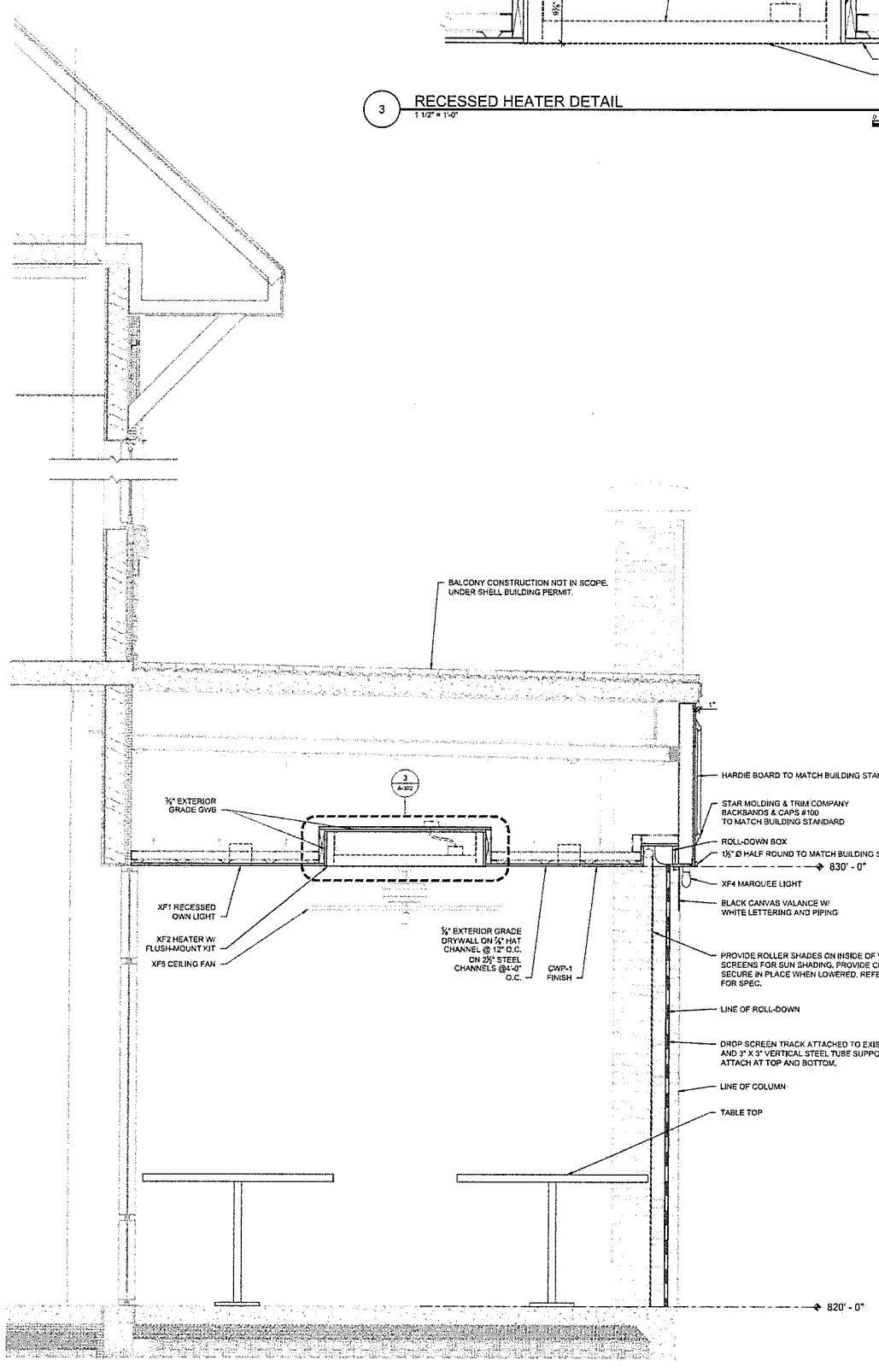
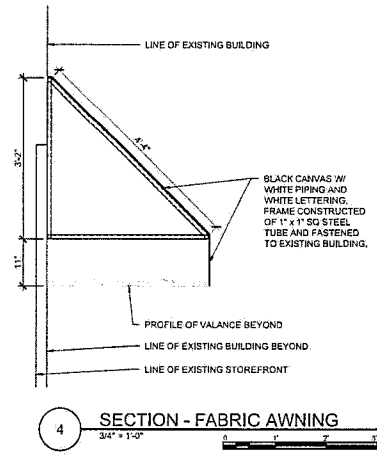
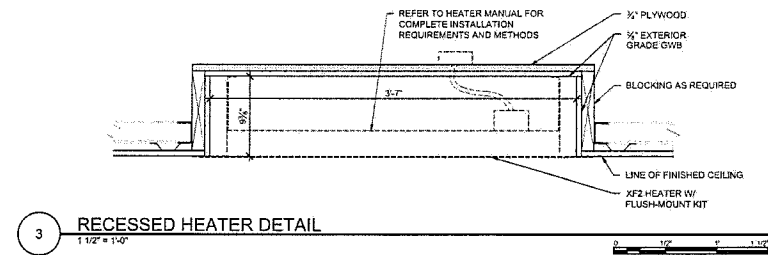
PROJECT NO: 3256  
 CAD DWG FILE: 18W-DUBA STEAKHOUSE CAD-DWG-01.dwg  
 DRAWN BY: J. C. BARNETT  
 CHECKED BY: J. C. BARNETT

**SHEET TITLE**  
 EXTERIOR ELEVATIONS

**A-202**



1 WEST ELEVATION - ROLL DOWN  
 1/4" = 1'-0"



GENERAL SIGNAGE NOTE  
 SIGNAGE AND AWNINGS ARE SHOWN HEREIN FOR REFERENCE ONLY. APPLICANT UNDERSTANDS THAT THESE ITEMS MUST COMPLY WITH THE APPROVED MASTER SIGN PLAN AND BE PERMITTED ACCORDINGLY.

DATE	DESCRIPTION
10/23/11	APR SUBMISSION
10/29/11	REVISION FOR BID
06/01/11	ISSUED FOR PERMIT
03/10/11	ISSUED FOR PERMIT
11/19/10	REVISION FOR BID
11/19/10	ISSUED

**DUBLIN STEAKHOUSE**  
 94 NORTH HIGH STREET  
 DUBLIN, OH 43017

PROJECT NO: 3236  
 CAD DWG FILE: DUBLIN STEAKHOUSE EXTERIOR WALL  
 DRAWN BY: J. KNAUSER  
 CHECKED BY: J. KNAUSER  
 COPYRIGHT: © 2011 KNAUSER INCORPORATED  
 ALL RIGHTS RESERVED. NO PART OF THIS DOCUMENT MAY BE REPRODUCED OR TRANSMITTED IN ANY FORM OR BY ANY MEANS, ELECTRONIC OR MECHANICAL, WITHOUT PERMISSION IN WRITING FROM KNAUSER INCORPORATED.

SHEET TITLE  
**EXTERIOR WALL SECTIONS**

**A-302**

EXTERIOR WALL SECTIONS FOR DUBLIN STEAKHOUSE, 94 NORTH HIGH STREET, DUBLIN, OH 43017. PROJECT NO. 3236. DATE: 10/23/11.





TOTAL AREA = 679 SQ FT  
AREA TRANSPARENT = 347 SQ FT  
AREA SOLID = 332 SQ FT

TRANSPARENT PERCENTAGE = 51%  
SOLID PERCENTAGE = 49%