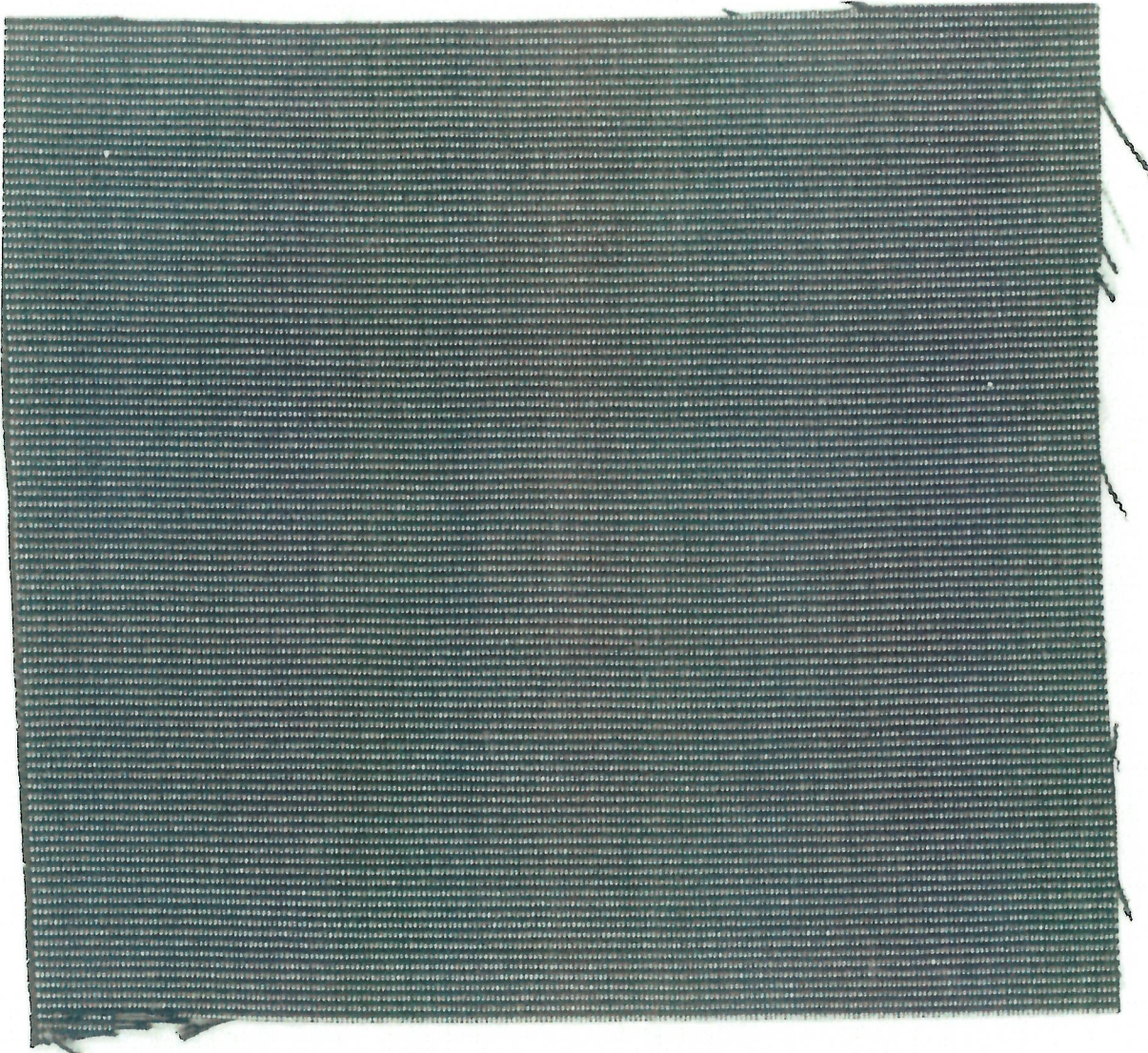




SUNBRELLA 4608 'BLACK' w/ WHITE STITCHED PIPING



TEMPOTEST USA - TEMPOTEST MARINE T40779-60
'SILVER TWEED'

ThermoVeil® Dense Basket Weave Shadecloth 1300 Series

The ThermoVeil® Dense Basket Weave Shadecloth 1300 Series is a technically advanced material woven in a 2x2 basket-weave pattern and available in a wide range of colors.

Content: 75% vinyl, 25% polyester core
 Openness factor: approx. 5%
 Stocked: 63 in. (160cm), 96 in. (244cm), and 126 in. (320cm) wide
 NFPA 701-2004: passed



PROPOSED COLOR



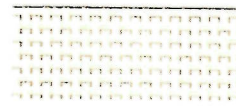
1313 Grey



1301 White



1316 Eggshell



1317 Straw



1302 Beige



1319 Silver Birch



1320 Shadow Grey



1304 Black/Brown

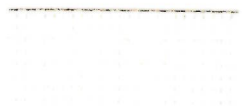
ThermoVeil® Dense Basket Weave Shadecloth 1500 Series

The ThermoVeil® Dense Basket Weave Shadecloth 1500 Series has a 3% openness factor. Its shadecloth colors match the eight colors of the 1300 Series, which is 5% open. Both technically advanced materials are woven in a 2x2 basket-weave pattern. The basket weave provides a uniform scrim effect at the window wall with appropriate densities for sun control.

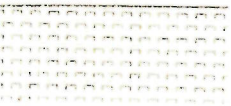
Content: 75% vinyl, 25% polyester core
 Openness factor: 3%
 Stocked: 63 in. (160cm), 96 in. (244cm), and 126 in. (320cm) wide
 NFPA 701-2004: passed



1513 Grey



1501 White



1516 Eggshell



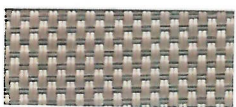
1517 Straw



1502 Beige



1519 Silver Birch



1520 Shadow Grey



1504 Black/Brown

ThermoVeil® Open Basket Weave Shadecloth 2100 Series

The ThermoVeil® Open Basket Weave Shadecloth 2100 Series has a more open weave, (10%) than the 1300 and 1500 Series and is available in the same color range as these two series. The 2113 Grey is a representative swatch.

Content: 75% vinyl, 25% polyester core
 Openness factor: approx. 10%
 Stocked: 63 in. (160cm) and 96 in. (244cm) wide
 NFPA 701-2004: passed

To request 4 x 4 in. (10 x 10cm), 8 x 10 in. (20 x 25cm), or 24 x 24 in. (61 x 61cm) samples, send an e-mail to: samples@mechoshade.com.

Other widths may be available on special order. Minimums and lead times apply. Available for QuickShip™

2113 Grey

2101 White

2116 Eggshell

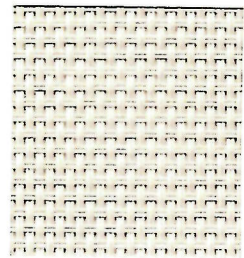
2117 Straw

2102 Beige

2119 Silver Birch

2120 Shadow Grey

2104 Black/Brown



2113 Grey

MechoShade Systems, Inc.
 42-03 35th Street, Long Island City, NY 11101
 T: +1 (718) 729-2020
 F: +1 (718) 729-2941/+1(800) 899-8081
marketing@mechoshade.com
MechoShadeSystems.com



ThermoVeil®



United Plate Glass Company, Inc.

Butler, PA: 800-772-7783

Fax: 724-848-4946

Lincolnton, NC: 866-361-8992

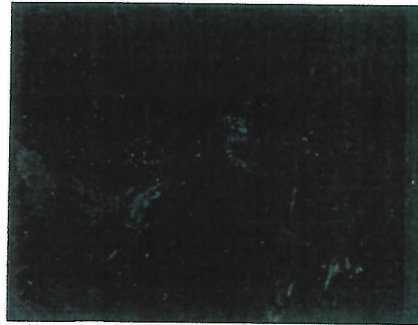
Fax: 828-970-6114

CERAMIC FRIT SPANDREL GLASS

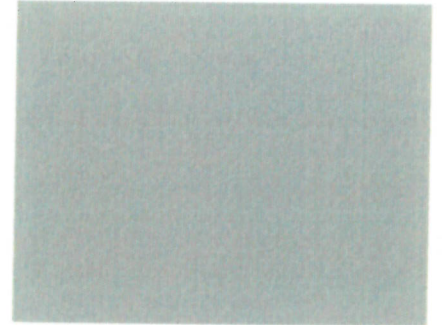
Standard Color Chart



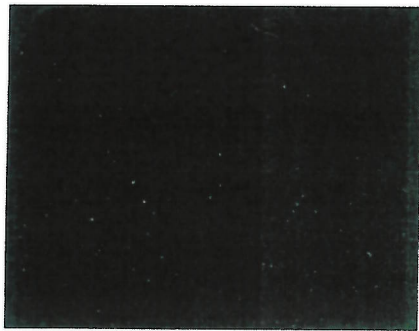
Black



Solar Gray



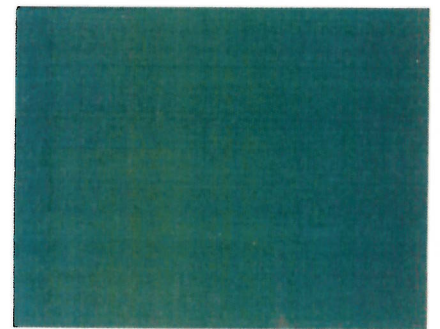
Warm Gray



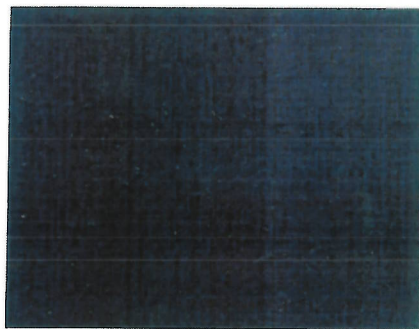
Solar Bronze



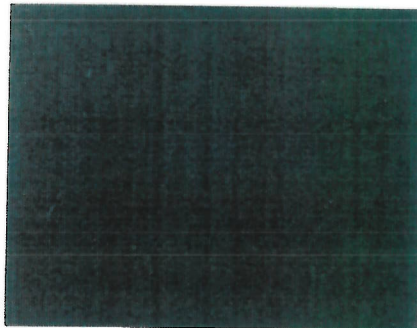
Smoke



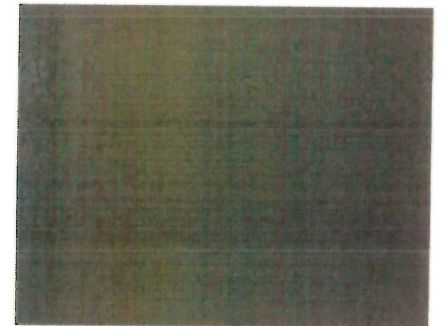
Harmony Solex



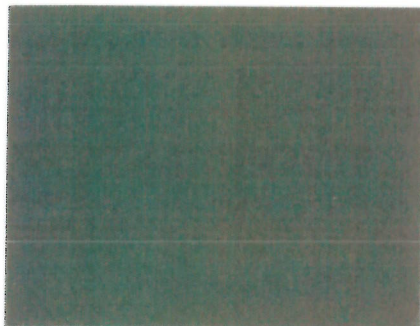
Ford Blue



Gunmetal



Lava Bronze



Charcoal



Hi Opacity White



White on Low Iron

NOTE: Color chips are simply close representations to actual colors manufactured. Actual production line samples are recommended for final color approval.

UPG Glass Specs



108 Grundman Drive • Butler, PA 16001

Ph 724-848-7400 • Toll Free 800-772-7783 • Fx 724-848-4946

United Plate Glass Company

Customer:

Job Name:

Unit Make up: 1" INSULATED UNIT
Outboard Lite: 1/4" Clear
Airspace/ Gas: 1/2" Airspace
Inboard Lite: 1/4" Black Ceramic Frit Spandrel - #4

- Visible Light Transmittance: 0%
- Visible Reflectance Out: 13%
- Solar Transmittance: 0%
- Solar Reflectance Out: 12%
- U-V Light Transmittance: 0%
- Winter Nighttime U-Value: 0.47
- Summer Daytime U-Value: 0.50
- Shading Coefficient: 0.6
- SHGC: 0.51

UPG Insulated Glass Units are third party certified with the Insulated Glass Certification Council (IGCC) to level CBA in accordance with ASTM E 2190

UPG Tempered Glass is certified by the Safety Glazing Certification Council (SGCC) conforming to 16 CFR 1201 & ANSI Z97.1-2009 for safety glazing

Applicable Standards: ASTM C1036-06 Std. Primary Flat Glass, ASTM C1048-04 Std. Flat Glass, Heat Treated & Fully Tempered where applicable.

UPG believes this calculated performance data to be reasonably accurate, but it may not precisely agree with similar performance data calculated using the LBL Window 5.2 program. UPG's published data is based on the LBL Window 5.2 program, and from performance calculators found on the glass manufacturers websites.

These calculated numbers are for reference only and may vary; UPG is not stating these numbers are 100% accurate for all glass types. United Plate Glass will not be held responsible any inconsistencies or discrepancies

These numbers have been calculated as 1" overall units with 1/2" airspace. Actual performance data may vary with the use of a different airspace and gas. All information has been pulled from the appropriate supplier websites.

Project: Avenue - Dublin Steakhouse
Project #: 3296

Issue Date: 19 JUN 2017
Revision Date:

Mfr: Pyro Lave
213 Fayetteville Street
Raleigh, NC 27601, United States
P: 919.788.8953
www.pyrolave.com

Rep:

Contact: Jean Pauwels
P: 919.788.8953
jean@pyrolaveusa.com

Contact:

Total Qty: 11 Area Qty: 11 Bulk Qty: 0 Lead Time: (weeks)

Finish Sample

Shop Drawings

Item Name: 30" x 52" Patio Dining Table - Table Top
Description: Noir Brilliant tabletop with Brass surround, exterior grade table top
Dimensions: 30"W x 52"L x 1.25" Thick
Finish: Noir Brilliant Black
Edge Detail: Eased Edge, all corners to have radius edges
Height Note: Dining Height: Table Top (Item No. 110A) and Table Base (Item No. 110B) to measure an overall height of 30"
TAG: 110A: 30" x 52" Patio Dining Table - Table Top

SPECIAL INSTRUCTIONS:

1. Must be exterior grade
2. Must be Contract Quality with all new materials and non-corrosive.
3. Manufacturer to provide all required hardware for proper installation and instructions.
4. Table top and table base must be compatible with weight, height and dimensions.
5. All tops to be pre-drilled to accept appropriate bases.
6. Must be suitable for heavy-duty commercial, high-traffic restaurant use.
7. Construction method noted above is for guideline only. Manufacturer is to recommend the best construction method for the specific use of the furniture and obtain approval from Knauer and Owner prior to fabrication.
8. Refer to Instructions to Bidders, General and Specific Conditions for additional requirements.



AREAS

Avenue - Dublin Steakhouse

Patio A

11

Project: Avenue - Dublin Steakhouse
Project #: 3296

Issue Date: 19 JUN 2017
Revision Date:

Mfr: Gar Products, LLC
170 LeHigh Avenue
Lakewood, NJ 08701, United States
P: 1.800.424.2477 F: 732.370.5021
www.garproducts.com

Rep: John Manson
1545 N. Western Avenue
Chicago, IL 60622, United States
P: 773.278.8260 F: 773.278.8278
www.johnmanson.com

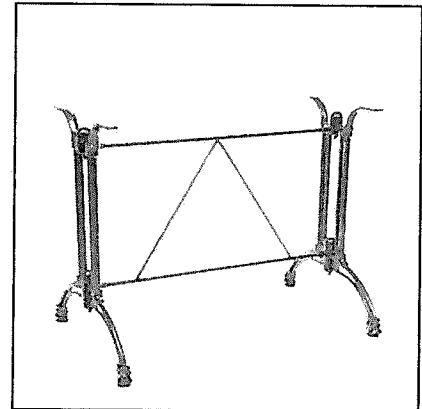
Contact:

Contact: Amy Buss
P: 773.278.8260
amy@johnmanson.com

Total Qty: 11 Area Qty: 11 Bulk Qty: 0 Lead Time: (weeks)

Finish Sample Shop Drawings

Item Name	30" x 52" Patio Dining Table - Table Base
Model No.	Margate 2
Finish	Cast Aluminum Base in Black Powdercoated Finish
Height	28"H
Spread	24"
Spider	18"
Height Note	Dining Height: Table Top and Table Base to measure an overall height of 30". If needed to build up height use a Marine-Grade Exterior-Use Plywood.
Glides	Use appropriate glides for Exterior Hard Surface Flooring
NOTE	For Custom Exterior Table Top Detail see Millwork Item No. 615
TAG	Item No. CSG110: 30" x 52" Patio Dining Table - Table Base



SPECIAL INSTRUCTIONS:

1. Must be Contract Quality with all new materials and non-corrosive.
2. Manufacturer to provide all required hardware for proper installation and instructions.
3. Table top and table base must be compatible with weight, height and dimensions.
4. Table base manufacturer to provide template for pre-drilling table tops
5. Must be suitable for heavy-duty commercial, high-traffic restaurant use.
6. Construction method noted above is for guideline only. Manufacturer is to recommend the best construction method for the specific use of the furniture and obtain approval from Knauer and Owner prior to fabrication.
7. Refer to Instructions to Bidders, General and Specific Conditions for additional requirements.
8. All bases to include glide appropriate for Exterior Hard Surface Flooring

AREAS

Avenue - Dublin Steakhouse

Patio A

11

Project: Avenue - Dublin Steakhouse
Project #: 3296

Issue Date: 19 JUN 2017
Revision Date: 12 JUL 2017 (2)

Mfr: Gar Products, LLC
170 LeHigh Avenue
Lakewood, NJ 08701, United States
P: 1.800.424.2477 F: 732.370.5021
www.garproducts.com

Rep: John Manson
1545 N. Western Avenue
Chicago, IL 60622, United States
P: 773.278.8260 F: 773.278.8278
www.johnmanson.com

Contact:

Contact: Amy Buss
P: 773.278.8260
amy@johnmanson.com

Total Qty: 11 Area Qty: 11 Bulk Qty: 0 Lead Time: (weeks)



Finish Sample



Shop Drawings

Item Name	30" x 52" Patio Dining Table - Table Base
Model No.	900 Series Professional Line - 901 EB
Finish	Black Zinc finish for Exterior Use
Height	28 1/8"
Spread	5.5" x 22"
Spider	9"
Column	3"
Weight	16 lbs
Height Note	Dining Height: Table Top and Table Base to measure an overall height of 30". If needed to build up height use a Marine-Grade Exterior-Use Plywood. Must use (2) bases for each table top.
Glides	Use appropriate glides for Exterior Hard Surface Flooring
NOTE	For Custom Exterior Table Top Detail see Millwork Item No. 615
TAG	Item No. CSG110: 30" x 52" Patio Dining Table - Table Base



SPECIAL INSTRUCTIONS:

1. Must be Contract Quality with all new materials and non-corrosive.
2. Manufacturer to provide all required hardware for proper installation and instructions.
3. Table top and table base must be compatible with weight, height and dimensions.
4. Table base manufacturer to provide template for pre-drilling table tops
5. Must be suitable for heavy-duty commercial, high-traffic restaurant use.
6. Construction method noted above is for guideline only. Manufacturer is to recommend the best construction method for the specific use of the furniture and obtain approval from Knauer and Owner prior to fabrication.
7. Refer to Instructions to Bidders, General and Specific Conditions for additional requirements.
8. All bases to include glide appropriate for Exterior Hard Surface Flooring

AREAS

Avenue - Dublin Steakhouse

Patio A

11

Project: Avenue - Dublin Steakhouse
Project #: 3296

Issue Date: 19 JUN 2017
Revision Date:

Mfr: G & A Seating
152 Glen Road
Mountainside, NJ 07092, United States
P: 908.233.8000 F: 908.233.8600
www.gaseating.com

Rep:

Contact: George Stamos
P: 908.233.8000 C: 773.251.8241
gestamos1@aol.com

Contact:

Total Qty: 62 Area Qty: 62 Bulk Qty: 0 Lead Time: (weeks)

Finish Sample

Shop Drawings

Item Name	Patio Dining Chair
Description	Exterior Grade Chair for Patio Seating. All weather aluminum frame powder coated to imitate bamboo. Woven Nylon seat and back. Stracks 10 high.
Model #	Marina 808B
Dimensions	17"W x 21"D x 35"OH
Height	35"OH
Finish	Mahogany / Beige-Burgundy
Seat Height	30"SH
Arm Height	N/A
Glides	Nylon Glides for Exterior Hard Surface Flooring
TAG	Item No. 207: Patio Dining Chair



SPECIAL INSTRUCTIONS:

1. All legs to include nylon glides for hard surface flooring
2. Must be Contract Quality with all new materials.
3. Refer to Instructions to Bidders, General and Specific Conditions for additional requirements.
4. Provide finish samples for Knauers Approval.
5. Verify counts with Owner
6. Must be Exterior Grade

AREAS

Avenue - Dublin Steakhouse

Patio A

62

Project: Avenue - Dublin Steakhouse
Project #: 3296

Issue Date: 19 JUN 2017
Revision Date:

Mfr: Houzz
United States
P: 800.448.1632
www.houzz.com

Rep:

Contact:

Contact:

Total Qty: 2 Area Qty: 2 Bulk Qty: 0 Lead Time: (weeks)

Item Name	Exterior Planter at Entry
Description	Exterior Planter at Front Entrance
Model	Large Solid Cast Venetian Decorative Urn - Three Coin Cast
Material	Cast Aluminum
Dimensions	21"W x 21"L x 27"H
Finish	Black
TAG	Item No. 534: Exterior Planter at Entry

SPECIAL INSTRUCTIONS:

1. Must be contract quality with all new materials.
2. Manufacture to provide finish sample to Knauer for approval prior to production.
3. Refer to Instructions of Bidders, General and Specific Conditions for additional requirements.
4. Mount with security hardware.
5. Installed on frame (level and plum).
6. Must field verify all dimensions prior to fabrication.



AREAS

Avenue - Dublin Steakhouse	
Entry Vestibule	2

Project: Avenue - Dublin Steakhouse
Project #: 3296

Issue Date: 19 JUN 2017
Revision Date: 12 JUL 2017 (2)

Mfr: IAP - International Art Properties
2868 Chapman Street
Oakland, CA 94601, United States
P: 510.536.4886 F: 510.536.4899
www.iapsf.com

Rep: Anu Source, LLC
P.O. Box 3234
Merchandise Mart Plaza
Chicago, IL 60654, United States
P: 708.218.1861 F: 773.279.8229
www.anusource.com

Contact:

Contact: Rae Radovich
C: 708.218.1861
rae@anusource.com

Total Qty: 11 Area Qty: 11 Bulk Qty: 0 Lead Time: (weeks)

Item Name	Exterior Planter
Description	Exterior Planter in Patio A
Model	Monsoon
Model Number	042
Dimensions	18"W x 48"L x 32"H
Finish	Matte Black
TAG	Item No. 501: Exterior Planter

SPECIAL INSTRUCTIONS:

1. Must be contract quality with all new materials.
2. Manufacture to provide finish sample to Knauer for approval prior to production.
3. Refer to Instructions of Bidders, General and Specific Conditions for additional requirements.
4. Mount with security hardware.
5. Installed on frame (level and plum).
6. Must field verify all dimensions prior to fabrication.



AREAS

Avenue - Dublin Steakhouse	
Patio A	11

