



SUNBRELLA 4608 'BLACK' w/ WHITE STITCHED PIPING



TEMPOTEST USA - TEMPOTEST MARINE T40779-60
'SILVER TWEED'

ThermoVeil® Dense Basket Weave Shadecloth 1300 Series

The ThermoVeil® Dense Basket Weave Shadecloth 1300 Series is a technically advanced material woven in a 2x2 basket-weave pattern and available in a wide range of colors.

Content: 75% vinyl, 25% polyester core
 Openness factor: approx. 5%
 Stocked: 63 in. (160cm), 96 in. (244cm), and 126 in. (320cm) wide
 NFPA 701-2004: passed



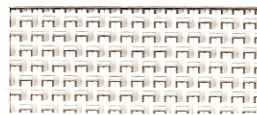
PROPOSED COLOR



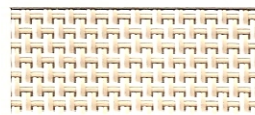
1313 Grey



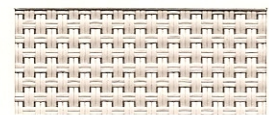
1301 White



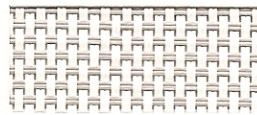
1316 Eggshell



1317 Straw



1302 Beige



1319 Silver Birch



1320 Shadow Grey



1304 Black/Brown

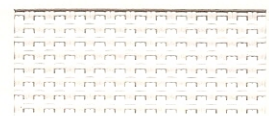
ThermoVeil® Dense Basket Weave Shadecloth 1500 Series

The ThermoVeil® Dense Basket Weave Shadecloth 1500 Series has a 3% openness factor. Its shadecloth colors match the eight colors of the 1300 Series, which is 5% open. Both technically advanced materials are woven in a 2x2 basket-weave pattern. The basket weave provides a uniform scrim effect at the window wall with appropriate densities for sun control.

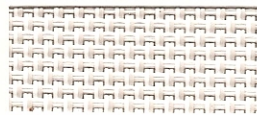
Content: 75% vinyl, 25% polyester core
 Openness factor: 3%
 Stocked: 63 in. (160cm), 96 in. (244cm), and 126 in. (320cm) wide
 NFPA 701-2004: passed



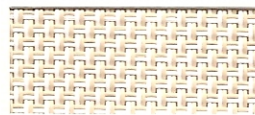
1513 Grey



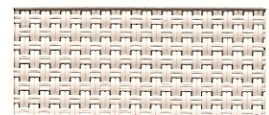
1501 White



1516 Eggshell



1517 Straw



1502 Beige



1519 Silver Birch



1520 Shadow Grey



1504 Black/Brown

ThermoVeil® Open Basket Weave Shadecloth 2100 Series

The ThermoVeil® Open Basket Weave Shadecloth 2100 Series has a more open weave, (10%) than the 1300 and 1500 Series and is available in the same color range as these two series. The 2113 Grey is a representative swatch.

Content: 75% vinyl, 25% polyester core
 Openness factor: approx. 10%
 Stocked: 63 in. (160cm) and 96 in. (244cm) wide
 NFPA 701-2004: passed

2113 Grey

2101 White

2116 Eggshell

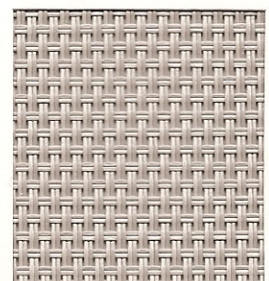
2117 Straw

2102 Beige

2119 Silver Birch

2120 Shadow Grey

2104 Black/Brown



2113 Grey

To request 4 x 4 in. (10 x 10cm), 8 x 10 in. (20 x 25cm), or 24 x 24 in. (61 x 61cm) samples, send an e-mail to: samples@mechoshade.com.

Other widths may be available on special order. Minimums and lead times apply. Available for QuickShip™

MechoShade Systems, Inc.
 42-03 35th Street, Long Island City, NY 11101
 T: +1 (718) 729-2020
 F: +1 (718) 729-2941/+1(800) 899-8081
marketing@mechoshade.com
MechoShadeSystems.com

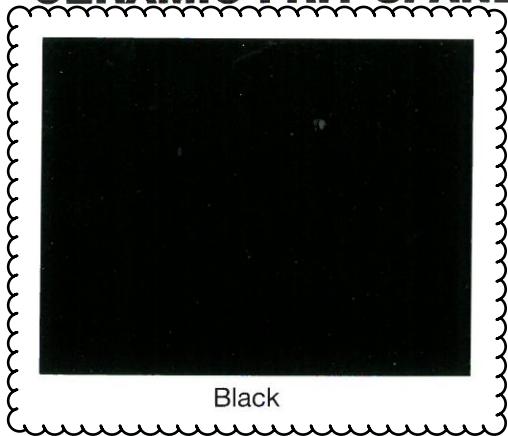
MechoShade Systems
 The Architect's Choice

ThermoVeil®



CERAMIC FRIT SPANDREL GLASS

Standard Color Chart



Black



Solar Gray



Warm Gray



Solar Bronze



Smoke



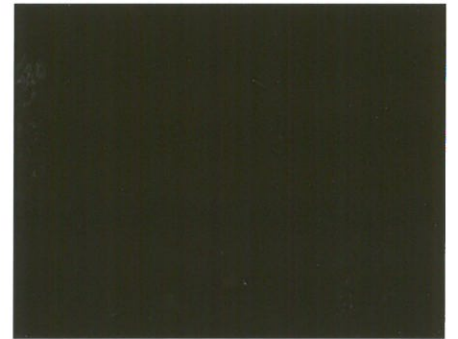
Harmony Solex



Ford Blue



Gunmetal



Lava Bronze



Charcoal



Hi Opacity White



White on Low Iron

NOTE: Color chips are simply close representations to actual colors manufactured. Actual production line samples are recommended for final color approval.

UPG Glass Specs



108 Grundman Drive • Butler, PA 16001

Ph 724-848-7400 • Toll Free 800-772-7783 • Fx 724-848-4946

United Plate Glass Company

Customer:

Job Name:

Unit Make up: 1" INSULATED UNIT
Outboard Lite: 1/4" Clear
Airspace/ Gas: 1/2" Airspace
Inboard Lite: 1/4" Black Ceramic Frit Spandrel - #4

- Visible Light Transmittance: 0%
- Visible Reflectance Out: 13%
- Solar Transmittance: 0%
- Solar Reflectance Out: 12%
- U-V Light Transmittance: 0%
- Winter Nighttime U-Value: 0.47
- Summer Daytime U-Value: 0.50
- Shading Coefficient: 0.6
- SHGC: 0.51

UPG Insulated Glass Units are third party certified with the Insulated Glass Certification Council (IGCC) to level CBA in accordance with ASTM E 2190

UPG Tempered Glass is certified by the Safety Glazing Certification Council (SGCC) conforming to 16 CFR 1201 & ANSI Z97.1-2009 for safety glazing

Applicable Standards: ASTM C1036-06 Std. Primary Flat Glass, ASTM C1048-04 Std. Flat Glass, Heat Treated & Fully Tempered where applicable.

UPG believes this calculated performance data to be reasonably accurate, but it may not precisely agree with similar performance data calculated using the LBL Window 5.2 program. UPG's published data is based on the LBL Window 5.2 program, and from performance calculators found on the glass manufacturers websites.

These calculated numbers are for reference only and may vary; UPG is not stating these numbers are 100% accurate for all glass types. United Plate Glass will not be held responsible any inconsistencies or discrepancies

These numbers have been calculated as 1" overall units with 1/2" airspace. Actual performance data may vary with the use of a different airspace and gas. All information has been pulled from the appropriate supplier websites.