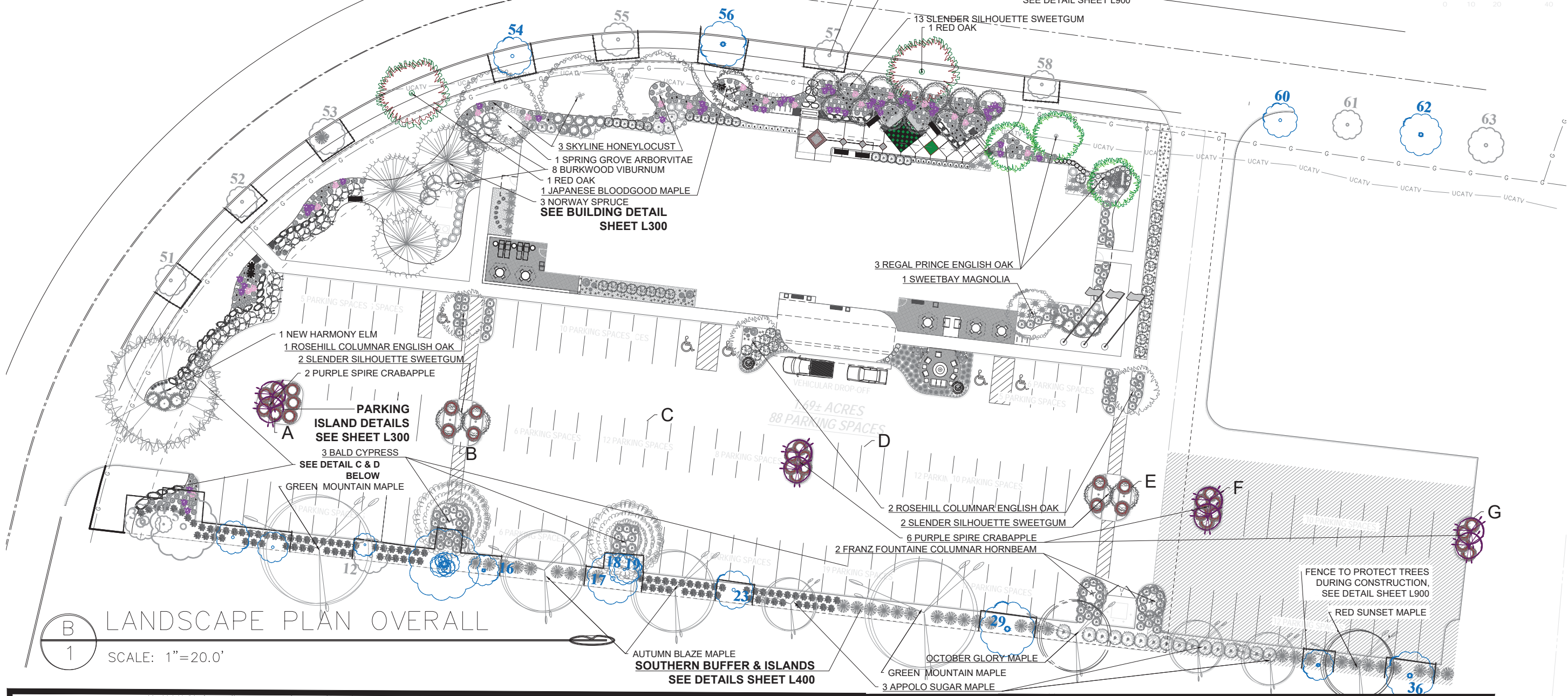


A  
1

LANDSCAPE PLAN OVERALL

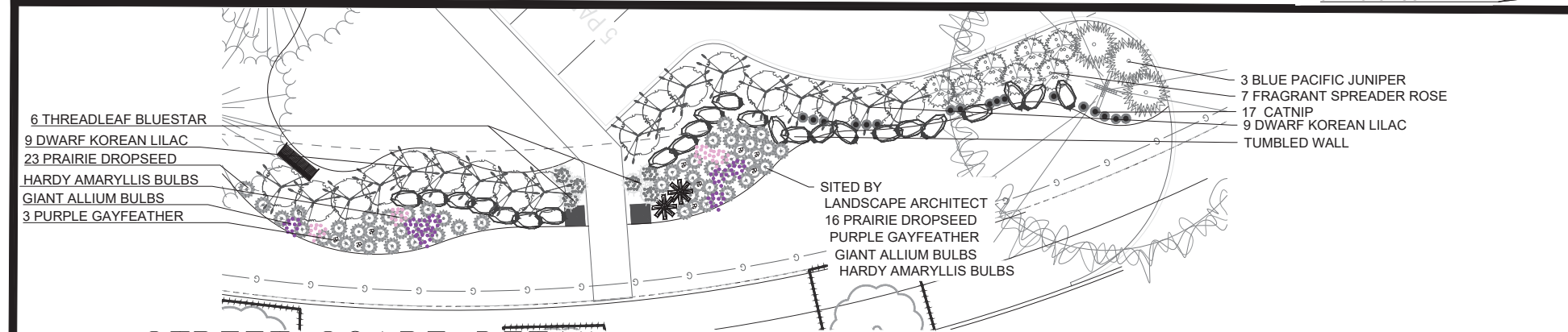
SCALE: 1"=20.0'



B  
1

LANDSCAPE PLAN OVERALL

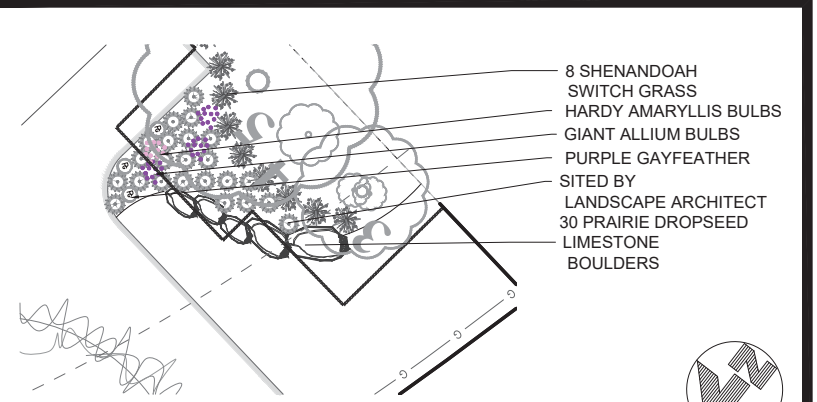
SCALE: 1"=20.0'



C  
1

STREET SCAPE DETAIL

SCALE: 1"=10.0'



D  
1

STREET SCAPE DETAIL

SCALE: 1"=10.0'



REVISIONS

DATE	DESCRIPTION
AUGUST 10, 2017	
AUGUST 15, 2017	
OCTOBER 12, 2017	

LANDSCAPE PLAN  
MARRIOTT HOTEL  
LOT #4 UPPER METRO PLACE  
CITY OF DUBLIN, FRANKLIN COUNTY, OHIO

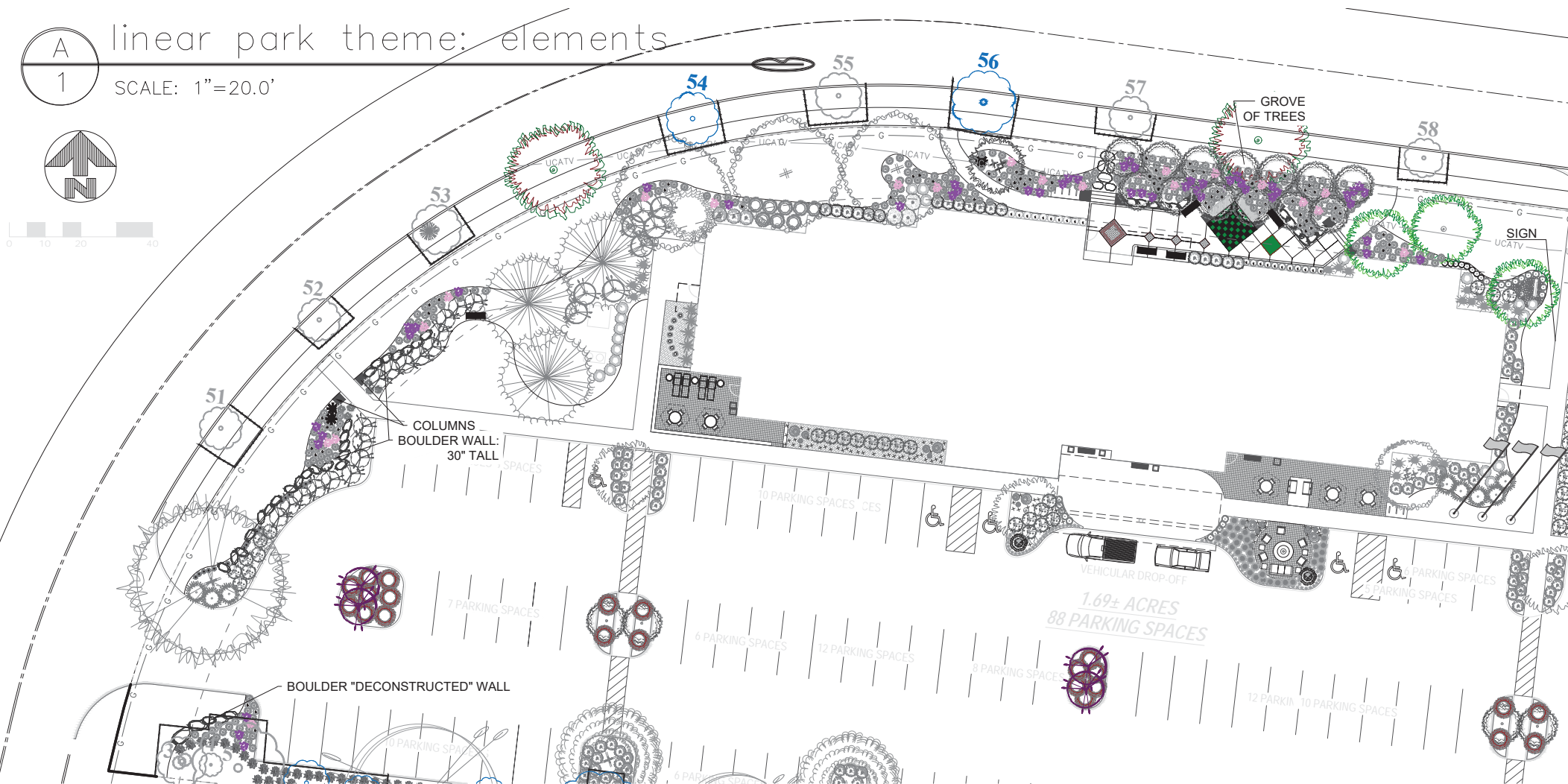
SCALE: 1"=20'  
DATE: JUNE 1, 2017  
DRAWN: WCD  
DESIGNED: SAD  
CHECKED: RVP  
XREF:  
JOB NO.: 16061  
STONEHENGE DUBLIN HOTEL



A  
1

linear park theme: elements

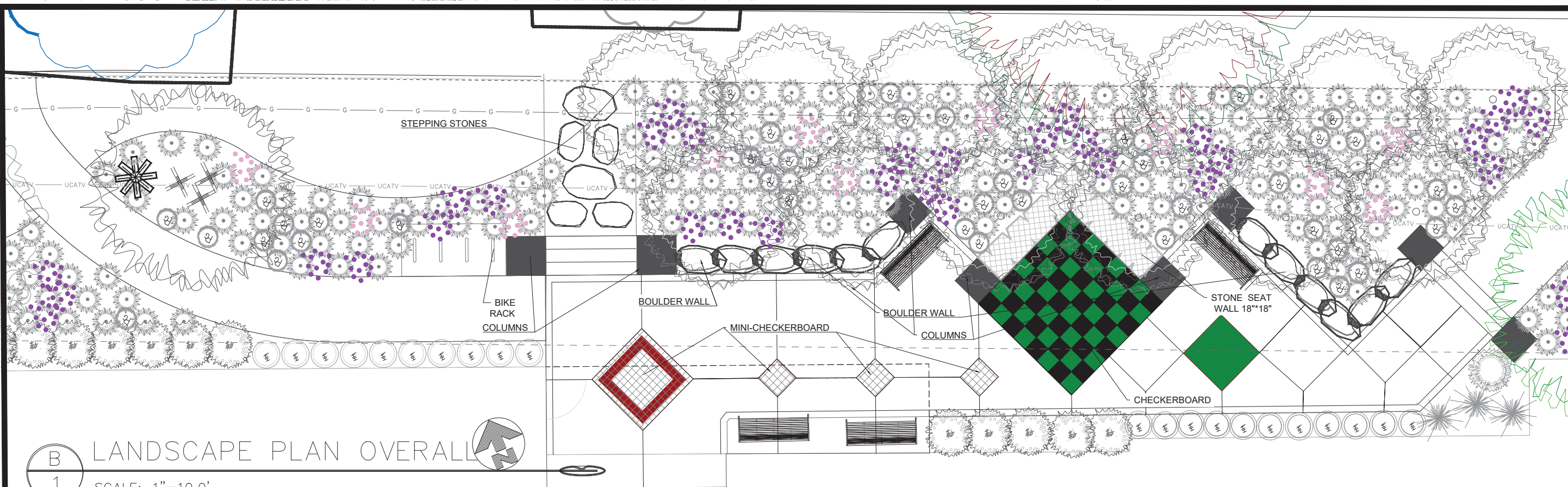
SCALE: 1"=20.0'



B  
1

LANDSCAPE PLAN OVERALL

SCALE: 1"=10.0'



REVISIONS

AUGUST 10, 2017	AUGUST 14, 2017	OCTOBER 12, 2017							

LANDSCAPE PLAN  
MARRIOTT HOTEL  
LOT #4 UPPER METRO PLACE  
CITY OF DUBLIN, FRANKLIN COUNTY, OHIO

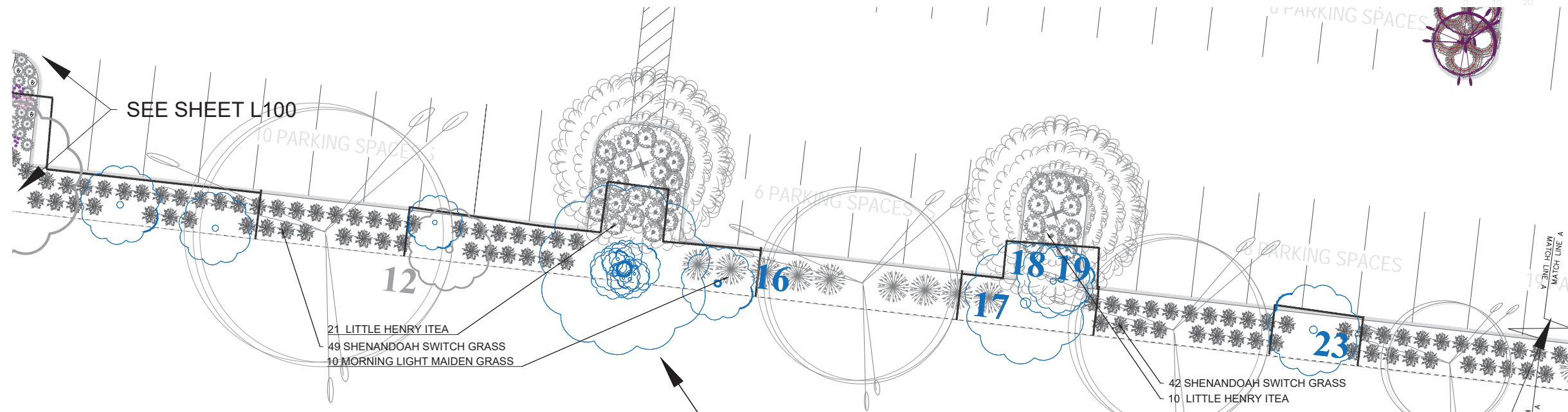
SCALE: 1"=20'  
DATE: JUNE 1, 2017  
DRAWN: WCD  
DESIGNED: SAD  
CHECKED: RVP  
XREF:  
JOB NO.: 16061

STONEHENGE DUBLIN HOTEL









A  
4

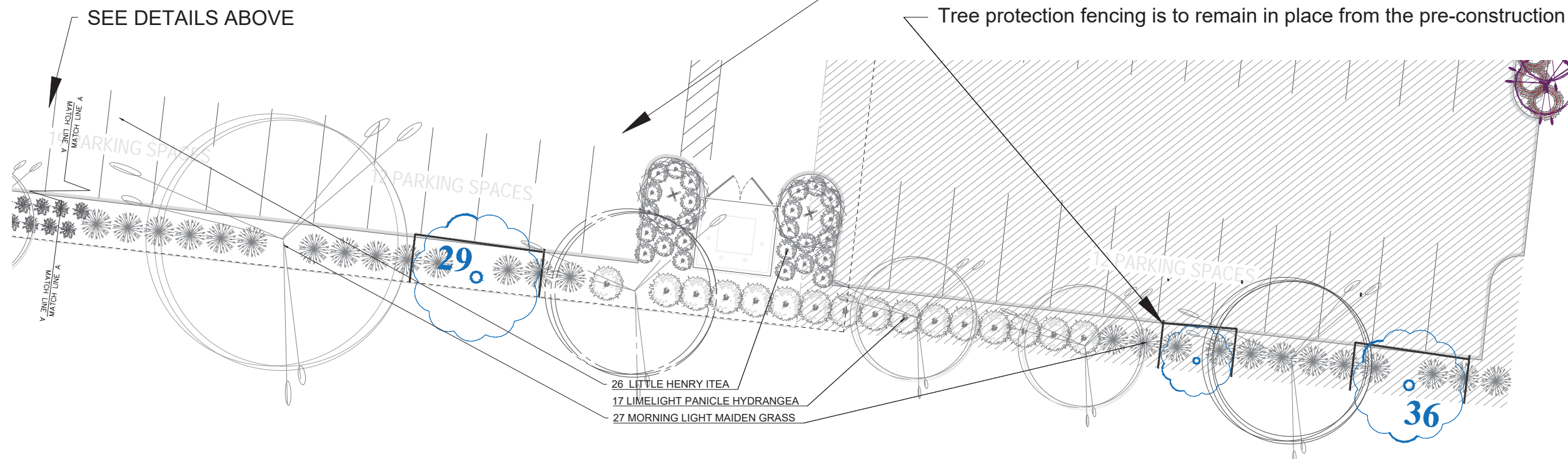
## LANDSCAPE PLAN OVERALL

SCALE: 1"=10.0'

SEE DETAILS BELOW

Existing trees will be protected during construction, no utilities or trench's, tunnels, or driveways shall be installed within 10' radius of existing trees without the written approval of the City Forester and/or Zoning Inspector.

Tree protection fencing is to remain in place from the pre-construction to final zoning inspection.



B  
4

## LANDSCAPE PLAN OVERALL

SCALE: 1"=10.0'

### REVISIONS

AUGUST 10, 2017	
AUGUST 15, 2017	
OCTOBER 12, 2017	

LANDSCAPE PLAN  
MARRIOTT HOTEL  
LOT #4 UPPER METRO PLACE  
CITY OF DUBLIN, FRANKLIN COUNTY, OHIO

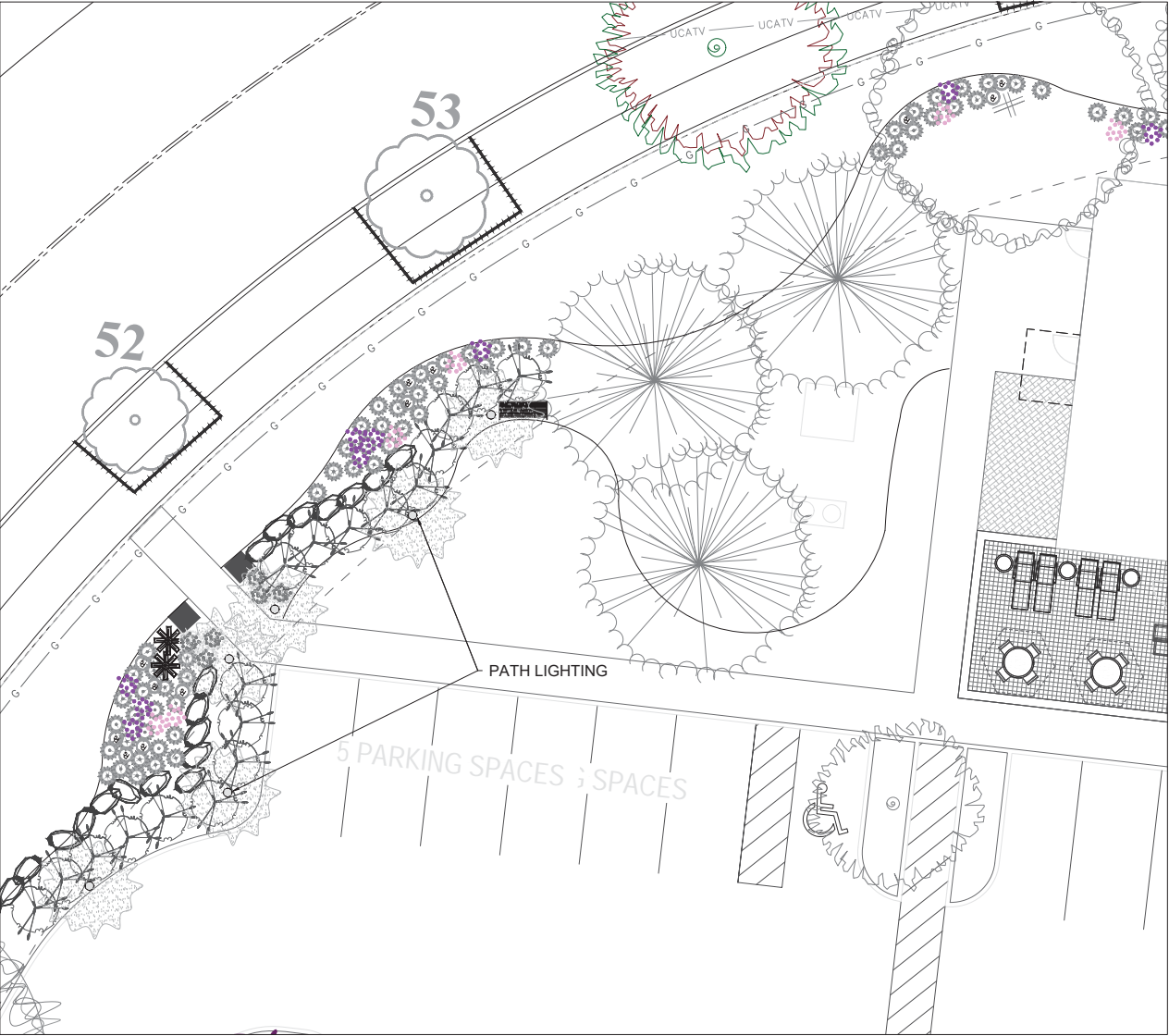
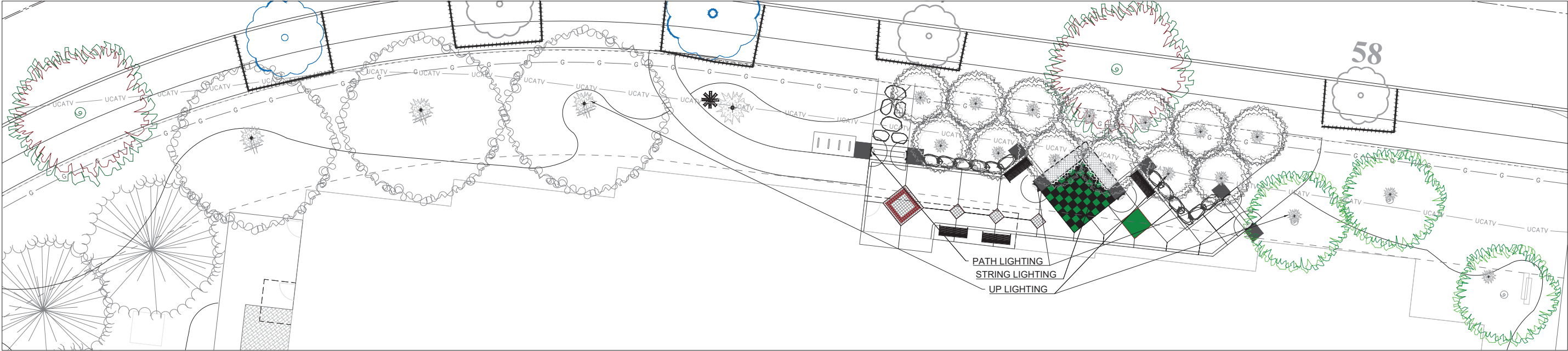
SCALE: 1"=20'  
DATE: JUNE 1, 2017  
DRAWN: WCD  
DESIGNED: SAD  
CHECKED: RVP  
XREF:  
JOB NO.: 16061

STONEHENGE DUBLIN HOTEL

Page

L400





LIGHTING PLAN: PARK  
SCALE: 1"=10.0'

REVISIONS

+	AUGUST 10, 2017	
+	AUGUST 15, 2017	
+	OCTOBER 12, 2017	

LANDSCAPE PLAN  
MARRIOTT HOTEL  
LOT #4 UPPER METRO PLACE  
CITY OF DUBLIN, FRANKLIN COUNTY, OHIO

SCALE: 1"=20'  
DATE: JUNE 1, 2017  
DRAWN: WCD  
DESIGNED: SAD  
CHECKED: RVP  
XREF:  
JOB NO.: 16061

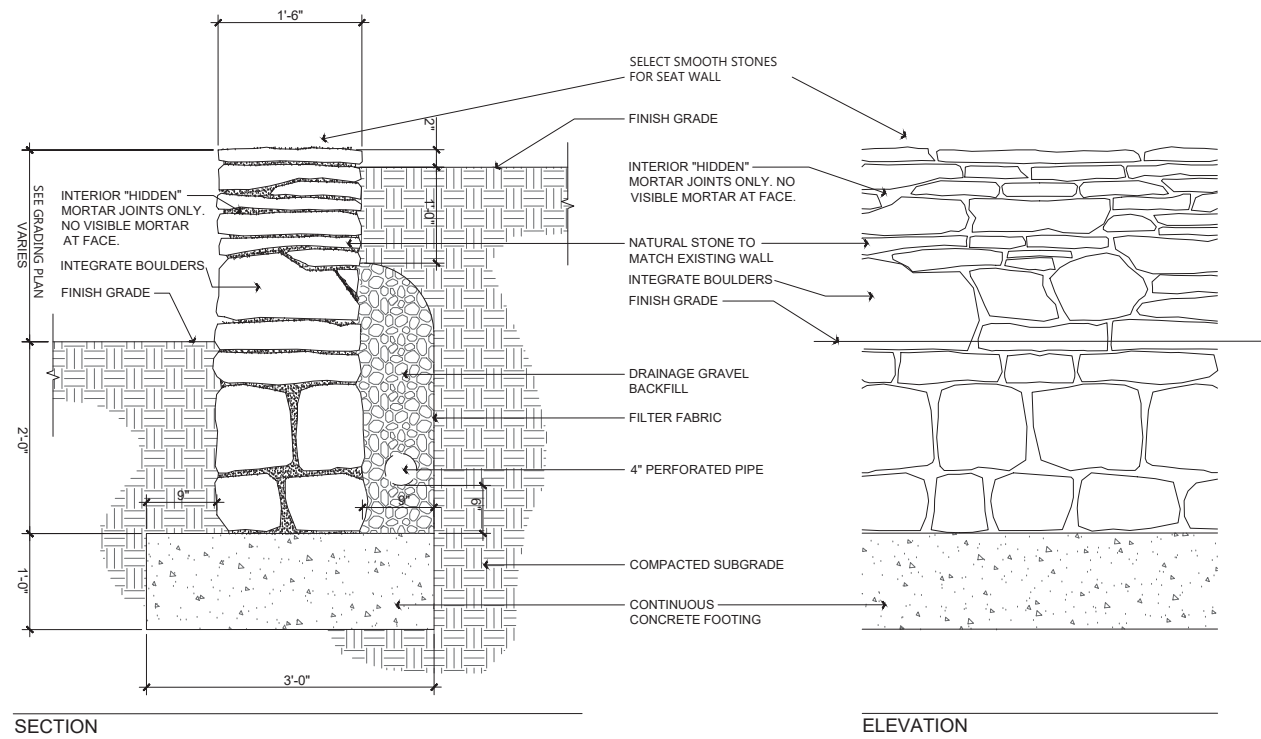
STONEHENGE DUBLIN HOTEL

Page





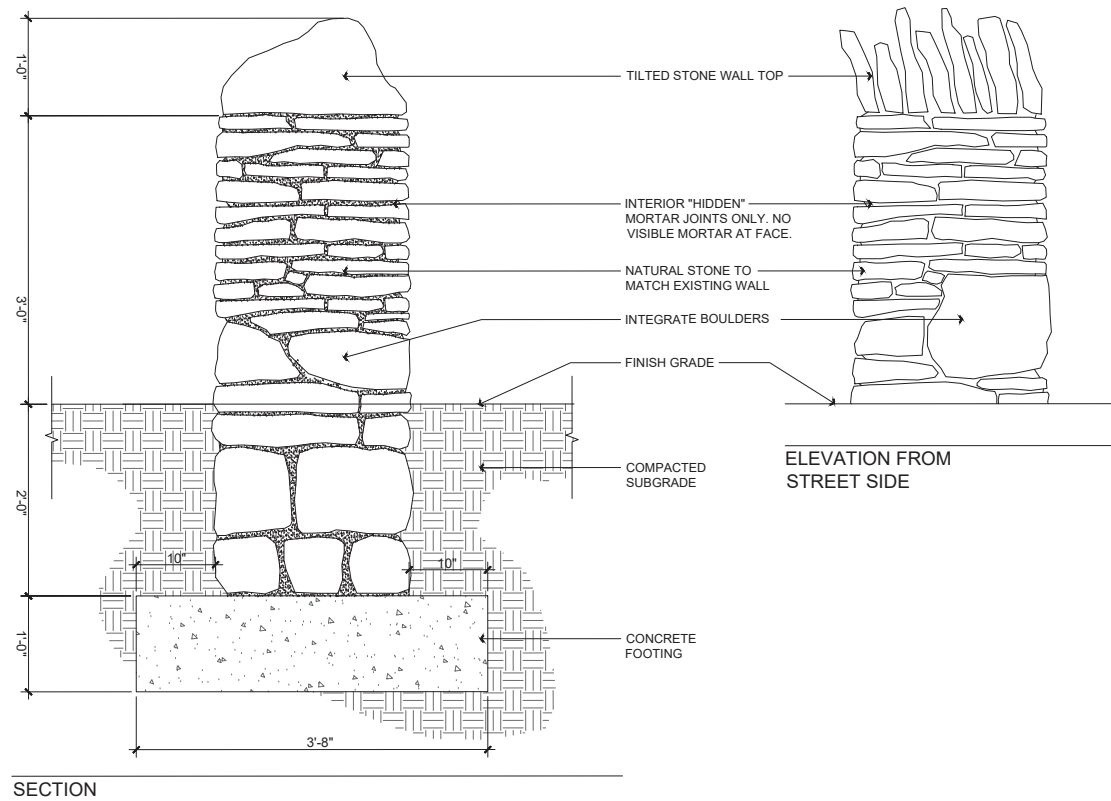




SECTION

ELEVATION

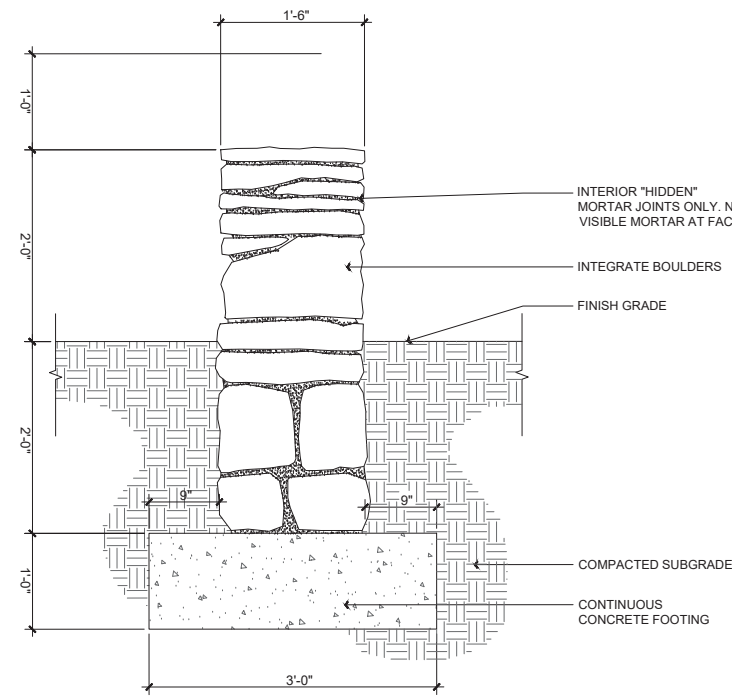
**A** NATURAL STONE WALL - RETAINING  
SCALE: 1" = 1'-0"



SECTION

**B** NATURAL STONE COLUMN  
SCALE: 1" = 1'-0"

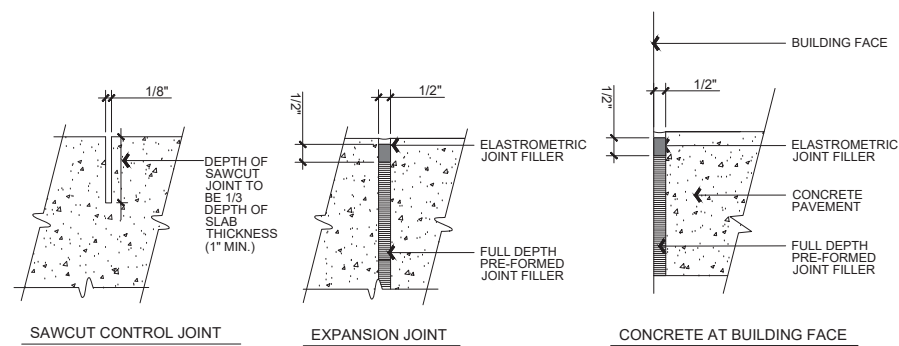
# A CONSTRUCTION DETAILS



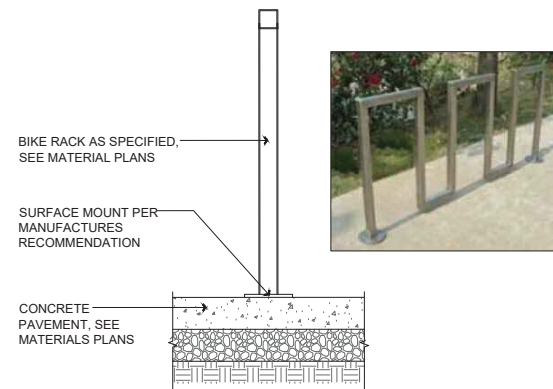
SECTION

ELEVATION

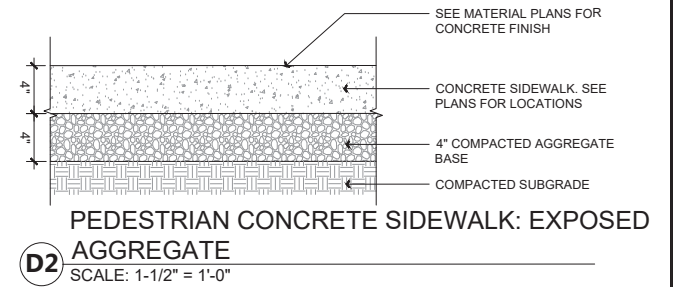
**C** NATURAL STONE WALL - FREE STANDING  
SCALE: 1" = 1'-0"



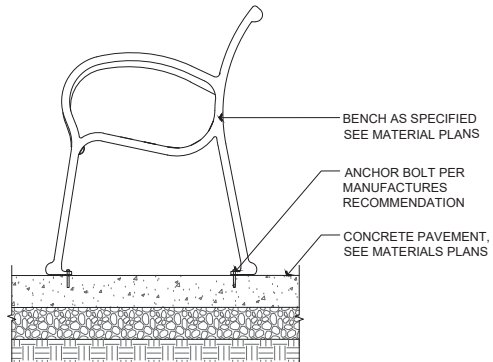
**D1** EXPANSION AND CONTROL JOINTS: EXPOSED AGGREGATE  
SCALE: 3" = 1'-0"



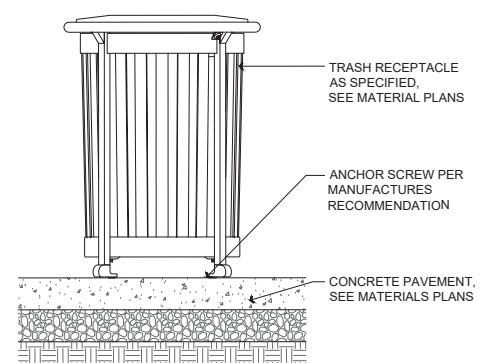
**E** BIKE RACK MOUNTING  
SCALE: 1" = 1'-0"



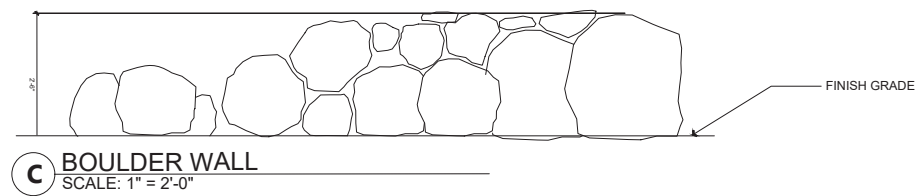
**D2** PEDESTRIAN CONCRETE SIDEWALK: EXPOSED AGGREGATE  
SCALE: 1-1/2" = 1'-0"



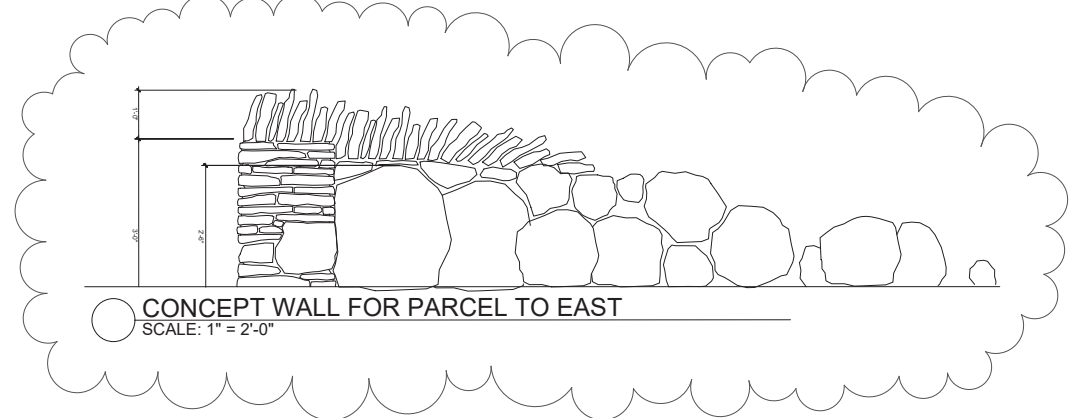
**F** BENCH MOUNTING  
SCALE: 1" = 1'-0"



**K** TRASH RECEPTACLE  
SCALE: 1" = 1'-0"



**C** BOULDER WALL  
SCALE: 1" = 2'-0"



**C** CONCEPT WALL FOR PARCEL TO EAST  
SCALE: 1" = 2'-0"



SPECIFICATIONS AND DETAILS

GENERAL NOTES

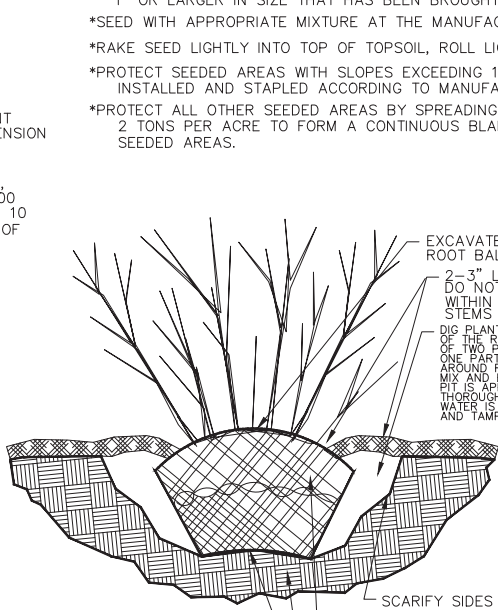
- \*ALL TREES AND SPECIMEN PLANT MATERIAL SHALL BE APPROVED BY LANDSCAPE ARCHITECT.
- \*PROVIDE QUALITY, SIZE, GENUS, SPECIES, AND VARIETY OF EXTERIOR PLANTS INDICATED, COMPLYING WITH APPLICABLE REQUIREMENTS IN ANSI Z60.1, "AMERICAN STANDARD FOR NURSERY STOCK."
- \*FURNISH NURSERY-GROWN TREES AND SHRUBS COMPLYING WITH ANSI Z60.1, WITH HEALTHY ROOT SYSTEMS DEVELOPED BY TRANSPLANTING OR ROOT PRUNING. PROVIDE WELL-SHAPED, FULLY BRANCHED, HEALTHY, VIGOROUS STOCK, FREE OF DISEASE, INSECTS, EGGS, LARVAE, AND DEFECTS SUCH AS KNOTS, SUN SCALD, INJURIES, ABRASIONS, AND DISFIGUREMENT.
- \*PROVIDE TREES AND SHRUBS OF SIZES AND GRADES COMPLYING WITH ANSI Z60.1 FOR TYPE OF TREES AND SHRUBS REQUIRED. TREES AND SHRUBS OF A LARGER SIZE MAY BE USED, IF ACCEPTABLE TO LANDSCAPE ARCHITECT, WITH A PROPORTIONATE INCREASE IN SIZE OF ROOTS OR BALLS.
- \*IF FORMAL ARRANGEMENTS OR CONSECUTIVE ORDER OF TREES OR SHRUBS IS SHOWN, SELECT STOCK FOR UNIFORM HEIGHT AND SPREAD, AND NUMBER LABEL TO ASSURE SYMMETRY IN PLANTING.
- \*LABEL AT LEAST ONE TREE AND ONE SHRUB OF EACH VARIETY AND CALIPER WITH A SECURELY ATTACHED, WATERPROOF TAG BEARING LEGIBLE DESIGNATION OF BOTANICAL AND COMMON NAME.
- \*LANDSCAPE ARCHITECT MAY OBSERVE TREES AND SHRUBS EITHER AT PLACE OF GROWTH OR AT SITE BEFORE PLANTING FOR COMPLIANCE WITH REQUIREMENTS FOR GENUS, SPECIES, VARIETY, SIZE, AND QUALITY. LANDSCAPE ARCHITECT RETAINS RIGHT TO OBSERVE TREES AND SHRUBS FURTHER FOR SIZE AND CONDITION OF BALLS AND ROOT SYSTEMS, INSECTS, INJURIES, AND LATENT DEFECTS AND TO REJECT UNSATISFACTORY OR DEFECTIVE MATERIAL AT ANY TIME DURING PROGRESS OF WORK. REMOVE REJECTED TREES OR SHRUBS IMMEDIATELY FROM PROJECT SITE.
- \*TOPSOIL SHALL BE ASTM D 5268, pH RANGE OF 5.5 TO 7, A MINIMUM OF 4 PERCENT ORGANIC MATERIAL CONTENT, FREE OF STONES 1 INCH OR LARGER IN ANY DIMENSION AND OTHER EXTRANEOUS MATERIALS HARMFUL TO PLANT GROWTH.
- \*COMPOST SHALL BE WELL-COMPOSTED, STABLE, AND WEED-FREE ORGANIC MATTER, pH RANGE OF 5.5 TO 8; MOISTURE CONTENT 35 TO 55 PERCENT BY WEIGHT; 100 PERCENT PASSING THROUGH ONE INCH SIEVE; SOLUBLE SALT CONTENT OF 5 TO 10 DECISIMENS/M; NOT EXCEEDING 0.5 PERCENT INERT CONTAMINANTS AND FREE OF SUBSTANCES TOXIC TO PLANTINGS.
- \*FERTILIZER TO BE SLOW-RELEASE, GRANULAR OR PELLETED CONSISTING OF 50 PERCENT WATER-INSOLUBLE NITROGEN, PHOSPHORUS, AND POTASSIUM IN AMOUNTS RECOMMENDED FOR TYPE OF PLANT BEING GROWN.
- \*MULCH TO BE FREE FROM DELETERIOUS MATERIALS AND SUITABLE AS A TOP DRESSING OF TREES AND SHRUBS, AND WILL BE EITHER SHREDDED HARDWOOD OR PINE STRAW UNLESS NOTED OTHERWISE.
- PREPARATION AND PLANTING
- \*LOCATE ALL UNDERGROUND UTILITIES PRIOR TO STARTING WORK. IF A PLANT IS SHOWN ON THE PLAN WITHIN THREE FEET OF AN UNDERGROUND UTILITY, NOTIFY LANDSCAPE ARCHITECT FOR ADJUSTMENT INSTRUCTIONS.
- \*PROTECT STRUCTURES, UTILITIES, SIDEWALKS, PAVEMENTS, AND OTHER FACILITIES, AND LAWNS AND EXISTING EXTERIOR PLANTS FROM DAMAGE CAUSED BY PLANTING OPERATIONS.
- \*PROVIDE EROSION-CONTROL MEASURES TO PREVENT EROSION OR DISPLACEMENT OF SOILS AND DISCHARGE OF SOIL-BEARING RUNOFF OR AIRBORNE DUST TO ADJACENT PROPERTIES AND WALKWAYS.
- \*LAY OUT INDIVIDUAL TREE AND SHRUB LOCATIONS AND AREAS FOR MULTIPLE EXTERIOR PLANTINGS. STAKE LOCATIONS, OUTLINE AREAS, ADJUST LOCATIONS WHEN REQUESTED, AND OBTAIN LANDSCAPE ARCHITECT'S ACCEPTANCE OF LAYOUT BEFORE PLANTING. MAKE MINOR ADJUSTMENTS AS REQUIRED.
- \*TREES SHALL BE SITED IN FIELD BY LANDSCAPE ARCHITECT WHERE NOTED ON PLANS.
- \*ALL PLANTING BEDS ARE TO BE PREPARED AS FOLLOWS :  
- LOOSEN SUBGRADE TO A DEPTH OF 4 - 6". REMOVE STONES LARGER THAN 1" IN ANY DIMENSION AND STICKS, ROOTS, RUBBISH, AND OTHER EXTRANEOUS MATTER, AND LEGALLY DISPOSE OF THEM OFF OWNER'S PROPERTY.  
- SPREAD COMPOST AT A DEPTH OF 4 - 6" AND TILL WITH LOOSENED SUBGRADE, MIXING THOROUGHLY.  
- GRADE PLANTING BEDS TO A SMOOTH, UNIFORM SURFACE PLANE WITH LOOSE, UNIFORMLY FINE TEXTURE. ROLL AND RAKE, REMOVE RIDGES, AND FILL DEPRESSIONS TO MEET FINISH GRADES.  
- EDGE BEDS 3 - 4" DEEP (SEE DETAIL).
- \*NOTIFY LANDSCAPE ARCHITECT IF SUBSOIL CONDITIONS SHOW EVIDENCE OF UNEXPECTED WATER SEEPAGE OR RETENTION IN TREE OR SHRUB PITS.
- \*ALL PLANTS ARE TO BE FERTILIZED WITH A SLOW- RELEASE FERTILIZER PER MANUFACTURER'S WRITTEN INSTRUCTIONS.
- \*REFER TO TYPICAL PLANTING DETAILS FOR PLANT INSTALLATION.
- \*IT IS THE CONTRACTOR'S OPTION WHETHER OR NOT TO STAKE A TREE, BUT IT IS ALSO THE CONTRACTOR'S RESPONSIBILITY TO ASSURE PLANTS REMAIN IN AN UPRIGHT POSITION UNTIL THE END OF THE WARRANTY PERIOD.
- \*ALL PLANTING BEDS AND INDIVIDUAL TREES AND SHRUBS ARE TO BE MULCHED AT A DEPTH OF 2 - 3". APPLY PRE-EMERGENT HERBICIDE BEFORE MULCHING PER MANUFACTURER'S WRITTEN INSTRUCTIONS.
- \*FOR ALL PLANT MATERIALS, PRUNE TO REMOVE DEAD OR INJURED BRANCHES ONLY, UNLESS OTHERWISE DIRECTED BY LANDSCAPE ARCHITECT.
- \*IT IS THE CONTRACTOR'S RESPONSIBILITY TO:  
- KEEP ADJACENT PAVINGS AND CONSTRUCTION CLEAN, AND MAINTAIN WORK AREA IN AN ORDERLY CONDITION, FOR DURATION OF PROJECT.  
- PROTECT EXTERIOR PLANTS FROM DAMAGE DUE TO LANDSCAPE OPERATIONS, OPERATIONS BY OTHER CONTRACTORS AND TRADES, AND OTHERS. MAINTAIN PROTECTION DURING INSTALLATION AND MAINTENANCE PERIODS. TREAT, REPAIR, OR REPLACE DAMAGED EXTERIOR PLANTING.  
- REMOVE SURPLUS SOIL AND WASTE MATERIAL, INCLUDING EXCESS SUBSOIL, UNSUITABLE SOIL, TRASH, AND DEBRIS, AND LEGALLY DISPOSE OF THEM OFF OWNER'S PROPERTY.

WARRANTY

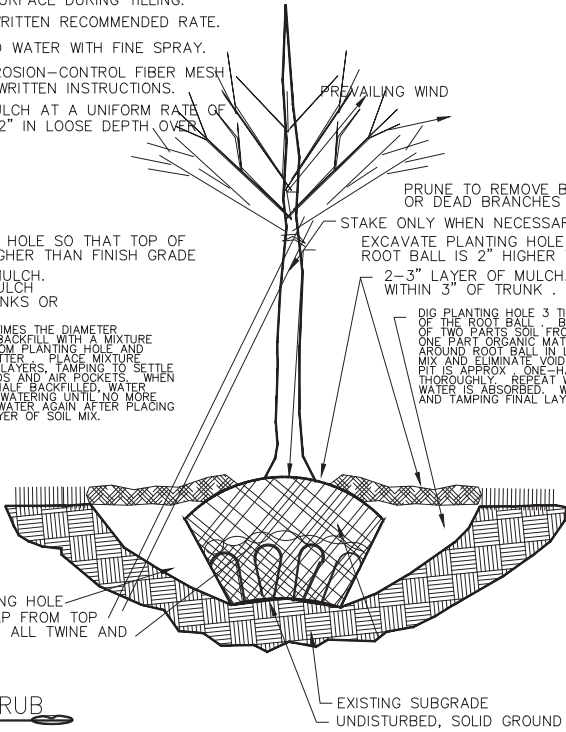
- \*CONTRACTOR SHALL PROVIDE OWNER WITH A WRITTEN WARRANTY FOR LABOR AND MATERIALS.
- \*CONTRACTOR SHALL WARRANT EXTERIOR PLANTS AGAINST DEFECTS, INCLUDING DEATH AND UNSATISFACTORY GROWTH, EXCEPT FOR DEFECTS RESULTING FROM LACK OF ADEQUATE MAINTENANCE, NEGLECT OR ABUSE BY OWNER, OR INCIDENTS THAT ARE BEYOND CONTRACTOR'S CONTROL.
- \*WARRANTY SHALL INCLUDE SPECIFIC WARRANTY PERIODS FOR TREES AND SHRUBS, GROUND COVERS, AND OTHER EXTERIOR PLANTS.
- \*SERVICES PROVIDED BY WARRANTY SHALL INCLUDE :  
- MAINTAINING UPRIGHT POSITION OF EXTERIOR PLANTINGS DURING WARRANTY PERIOD.  
- IMMEDIATE REMOVAL OF DEAD EXTERIOR PLANTS AND IMMEDIATE REPLACEMENT, UNLESS REQUIRED TO PLANT IN THE SUCCEEDING PLANTING SEASON.  
- REPLACEMENT OF EXTERIOR PLANTS THAT ARE MORE THAN 25 PERCENT DEAD OR IN UNHEALTHY CONDITION AT END OF WARRANTY PERIOD.
- \*WARRANTY SHALL BE LIMITED TO ONE REPLACEMENT OF EACH EXTERIOR PLANT, EXCEPT FOR LOSSES OR REPLACEMENTS DUE TO FAILURE OF CONTRACTOR TO COMPLY WITH REQUIREMENTS.

SEEDING:

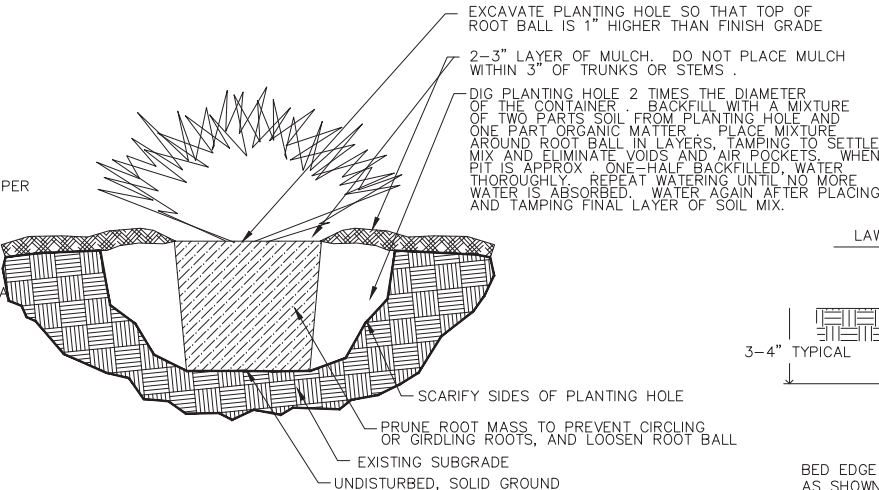
- \*SEED ALL DISTURBED AREAS. THE FINAL GRADE AND TOPSOIL WITHIN +/- .10 FEET WILL BE IN PLACE FOR SEEDING CONTRACTOR.
- \*APPLY A HIGH PHOSPHORUS FERTILIZER AT THE RATE OF 2-3 LB PER 1000 SF.
- \*TILL AREA TO BE SEED TO A DEPTH OF 4". RAKE TILLED AREA TO REMOVE DEBRIS 1" OR LARGER IN SIZE THAT HAS BEEN BROUGHT TO THE SURFACE DURING TILLING.
- \*SEED WITH APPROPRIATE MIXTURE AT THE MANUFACTURER'S WRITTEN RECOMMENDED RATE.
- \*RAKE SEED LIGHTLY INTO TOP OF TOPSOIL, ROLL LIGHTLY, AND WATER WITH FINE SPRAY.
- \*PROTECT SEEDED AREAS WITH SLOPES EXCEEDING 1:6 WITH EROSION-CONTROL FIBER MESH INSTALLED AND STAPLED ACCORDING TO MANUFACTURER'S WRITTEN INSTRUCTIONS.
- \*PROTECT ALL OTHER SEEDED AREAS BY SPREADING STRAW MULCH AT A UNIFORM RATE OF 2 TONS PER ACRE TO FORM A CONTINUOUS BLANKET 1-1/2" IN LOOSE DEPTH OVER SEEDED AREAS.



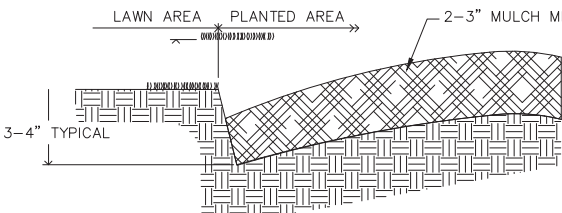
PLANTING DETAIL : BALLED AND BURLAPPED SHRUB



PLANTING DETAIL : BALLED AND BURLAPPED TREE



PLANTING DETAIL : CONTAINERIZED PLANTS



PLANTING DETAIL : BED EDGE

PLANT KEY				9.11.17
QNT	SIZE	REPLACEMENT INCHES	LATIN	COMMON
1	2 in	2	Ulmus americana 'NewHarmony'	NewHarmony American Elm
3	2 in	8	Quercus robur 'Regal Prince'	Regal Prince English Oak
17	2 in	26	Liquidambar styraciflua 'Slender Silhouette'	Sweetgum slender silhouette
3	2 in	6	Gleditsia triacanthos inermis 'Skyline'	Skyline Honeylocust
3	2 in	6	Quercus robur 'Rosehill'	Rosehill Columnar English Oak
	48	47 CALIPER INCHES REQUIRED PER TREE SURVEY TO BE REPLACED: PROVIDED		
2	2.5	5	Quercus rubra	Red Oak
(D)(3)(a)2 street trees replaced				
32	3 gal		Rhus aromatica 'Gro-Low'	Gro-Low Fragrant Sumac
8	2 in		Malus x 'Jefspire'	Purple Spire Columnar Crabapple
17	2 in		Liquidambar styraciflua 'Slender Silhouette'	Sweetgum slender silhouette
25		8 shade trees required/ provided per parking 1 per 12 spaces		
existing southern border trees to remain				
2	1.5in		Acer saccharum 'Green Mountain	Green Mountain Maple
2	1.5in		Acer rubrum " Autumn Blaze"	Autumn Blaze Maple
3	1.5in		Acer saccharum 'Appolo'	Appolo Sugar Maple
1	1.5in		Acer rubrum 'Red Sunset'	Red Sunset Maple
1	1.5in		Acer rubrum 'October Glory'	October Glory Maple
9		Added as requested per Memo		
existing southern border trees to remain				
18	5 gal		Syringa meyeri 'Palibin'	Dwarf Korean Lilac
8	3 gal		Juniperus conferta 'Blue Pacific'	Blue Pacific Juniper
26		(E)(C)(1) screening 1 shrub per 25lf. 25 required: provided		
3	5 gal		Hydrangea arborescens "Incrediball"	Incrediball Hydrangea
3	5gal		Hydrangea macrophylla 'Blushing Bride'	Blushing Bride Hydrangea
7	3 gal		Spiraea x bumalda 'Goldflame'	Goldflame Spirea
8	36 in		Viburnum x burkwoodii	Burkwood Viburnum
18	3 gal		Hydrangea quercifolia 'Pee Wee'	Pee Wee Hydrangea
38	2 gal		Rosa 'Fragrant Spreader'	Fragrant Spreader Rose
5	15 in		Buxus x 'Green Mountain'	Green Mountain Boxwood
5	24 in		Buxus x 'Green Mountain'	Green Mountain Boxwood
5	36 in		Buxus x 'Green Mountain'	Green Mountain Boxwood
8	18-24 in		Taxus x media 'Ward'	Ward's Anglojap Yew
2	18-24 in		Picea pungens 'Globosa'	Globosa Spruce
21	3 gal		Juniperus squamata 'Blue Star'	Blue Star Juniper
16	6'		Thuja occidentalis 'Emerald'	Emerald Green Arborvitae
139		(D)(7)(b) foundation planting required 60.2, provided		
78		88 beyond required		
3	2 in		Taxodium distichum	Bald Cypress
2	2 in		Carpinus betulus 'Frans Fontaine'	Columnar Hornbeam Frans Fontaine
16	5 gal		Hydrangea paniculata 'Limelight'	Limelight Panicle Hydrangea
35	3 gal		Miscanthus sinensis 'Morning Light'	Morning Light Maiden Grass
98	3 gal		Panicum virgatum 'Shenandoah'	Shenandoah Switch Grass
149		138 ornamental grasses provided, to disturb the existing tree roots the least		
(D)(4)existing southern border trees to remain				
groundcovers per code				
105	3 gal		Itea virginica 'Little Henry'	Little Henry Itea
338	PP		Sporobolus heterolepis	Prairie Dropseed
10	1 gal		Hosta 'August Moon'	August Moon Hosta
11	1 gal		Hosta 'Blue Angel'	Blue Angel Hosta
8	1 gal		Geranium 'Rozanne'	Rozanne Geranium
6	1 gal		Amsonia hubrechtii	Threadleaf Bluestar
17	1 gal		Nepeta faassenii 'Dropmore'	Catnip
68	1 gal		Liriope muscari 'Variegata'	Variegated Lily Turf
166	1 gal		Ajuga 'Chocolate Chip'	Chocolate Chip Ajuga
above and beyond code, to soften, enhance, create park experience and Dublin effect				
1	6-7'		Acer palmatum 'Bloodgood'	Japanese Bloodgood Maple
19	6-7'		Thuja occidentalis 'Emerald'	Emerald Green Arborvitae
1	6-7'		Thuja plicata 'Grovepl'	Spring Grove Arborvitae
5	3 gal		Panicum virgatum 'Heavy Metal'	Heavy Metal Switch Grass
27	3 gal		Calamagrostis x acutiflora 'Avalanche'	Varigated Avalanche Feather Reed Grass
39	2 gal		Pennisetum orientale 'Karley Rose'	Karley Rose Fountain Grass
67	1 gal		Liatris spiccata 'Kobold'	Purple Gayfeather
150	EA		Giant Allium Bulb	
100	EA		Surprise Lily	
PLAN BY				
7377 BRIDGEPOINT PASS CINCINNATI, OHIO 45248				
513-607-8096 GAF1LA@FUSE.NET				
				 Gayle A. Frazer Registered Landscape Architect

BED EDGE SHALL NOT BE ROUGH, BUT CLEAN, SMOOTH, AND CONTINUOUS AS SHOWN ON PLANS. MINOR FIELD ADJUSTMENTS ARE ALLOWED DUE TO UNEXPECTED OBSTRUCTIONS.



REVISIONS

NO.	DATE	DESCRIPTION
1	JUNE 14, 2017	
2	AUGUST 14, 2017	
3	OCTOBER 12, 2017	
4		
5		
6		
7		
8		
9		
10		

SPECIFICATIONS AND PLANTING DETAILS

MARRIOTT HOTEL  
LOT #4 UPPER METRO PLACE  
CITY OF DUBLIN, FRANKLIN COUNTY, OHIO

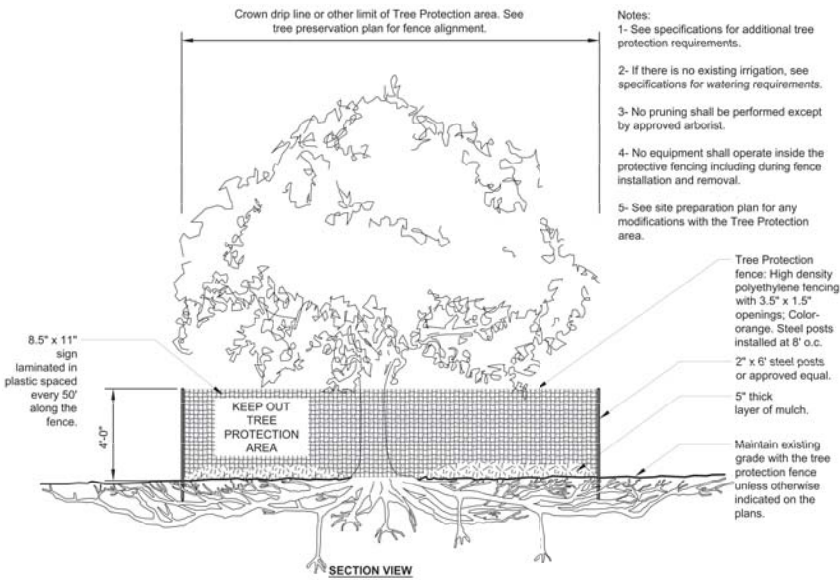
SCALE:  
DATE: JUNE 1, 2017  
DRAWN: WCD  
DESIGNED: SAD  
CHECKED: RVP  
XREF:  
JOB NO.: 16061

STONEHENGE DUBLIN HOTEL

Page

L800





S-X TREE PROTECTION

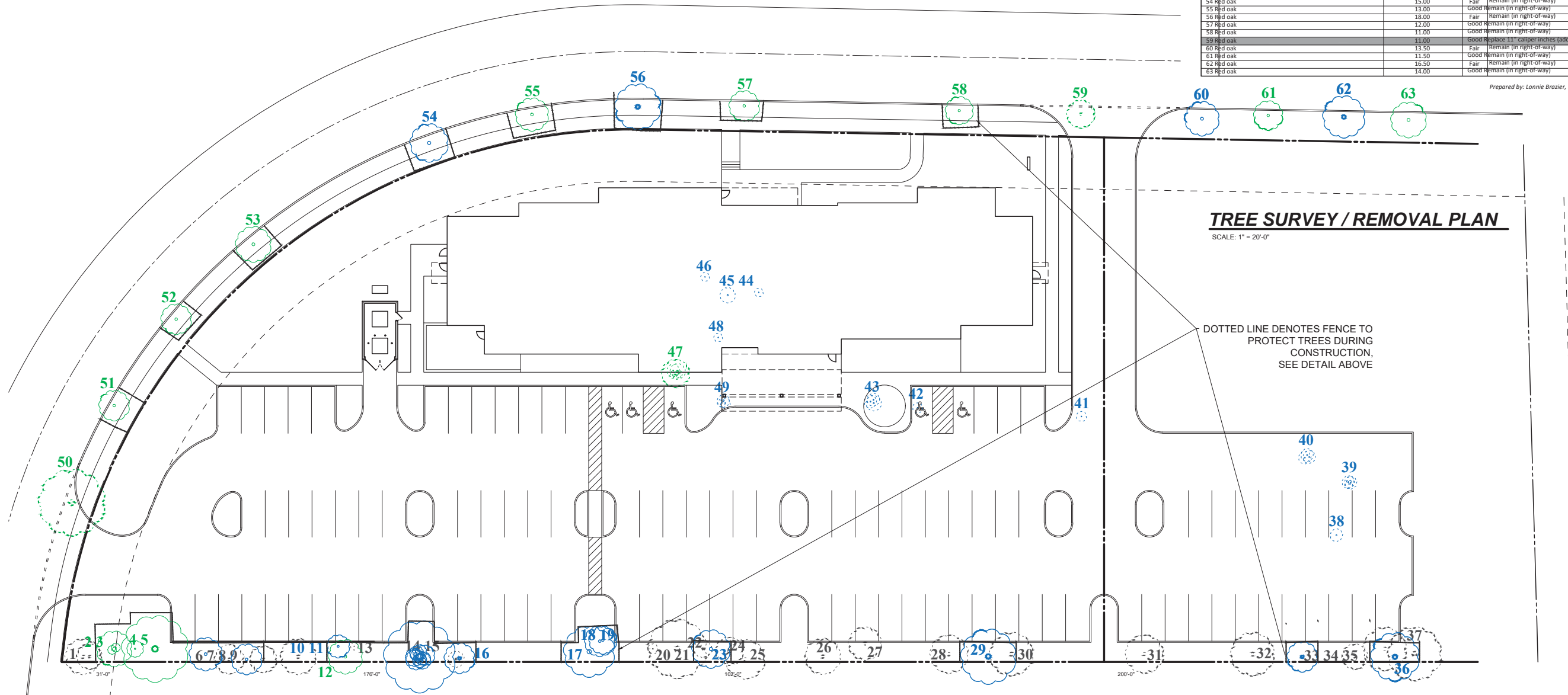
URBAN TREE FOUNDATION © 2014  
OPEN SOURCE FREE TO USE

TREE KING TREE SERVICES, INC.  
P.O. Box 1328  
Pataskala, OH 43062  
740-927-4291  
www.treekinginc.com

Upper Metro Pl. Lot 4 5155 Upper Metro Pl. Dublin, aOH 43017

Item #	Description	DBH	Condition	Comments	ft. from Boundary
1	Crabapple	14.00	Poor	Remove due to poor condition	2
2	Hackberry cluster (3 stems)	14.3, 5, 3.5	Good	Remain	5
3	Hackberry	6.50	Good	Remain	5
4	Hackberry	26.00	Good	Landmark tree (remain / protect)	2
5	Cherry	13.00	Fair	Remain	3
6	Cherry (completely dead, rotten)	13.00	Poor	Remove due to poor condition	1
7	Hackberry	12.00	Fair	Remain	1
8	Cherry (leaning/twisted, not vertical)	10.50	Poor	Remove due to poor condition	1
9	Cherry	14.00	Poor	Remove due to poor condition	2
10	Hackberry	9.00	Fair	Remain	6
11	Hackberry	13.50	Good	Remain	6
12	Hackberry	3.00	Poor	Remove due to poor condition	6
13	Hackberry cluster (10 small stems and one large codominant tree)	5, 8, 5, 6.5, 5.5, 8, 7, 4, 5.5, 28	Fair	Landmark tree (remain / protect)	1
14	Hackberry	6.50	Poor	Remove due to poor condition	1
15	Hackberry	12.00	Fair	Remain	1
16	Hackberry	20.00	Fair	Remain	4
17	Hackberry	12.00	Fair	Remain	9
18	Hackberry	11.00	Fair	Remain	9
19	Hackberry	4.00	Poor	Remove due to poor condition	5
20	Hackberry	23.00	Poor	Remove due to poor condition	5
21	Hackberry	7.00	Poor	Remove due to poor condition	5
22	Hackberry	15.00	Fair	Remain	5
23	Hackberry	11.00	Poor	Remove due to poor condition	4
24	Hackberry (codominant stems)	15.50	Poor	Remove due to poor condition	1
25	Cherry	14.00	Poor	Remove due to poor condition	2
26	Cherry	13.00	Poor	Remove due to poor condition	7
27	Cherry (85% dead)	15.00	Poor	Remove due to poor condition	3.0
28	Hackberry	21.50	Fair	Remain	2.0
29	Cherry (codominant stems)	17.00	Poor	Remove due to poor condition	3.0
30	Cherry	15.00	Poor	Remove due to poor condition	3.0
31	Cherry	17.00	Poor	Remove due to poor condition	3.0
32	Hackberry	12.00	Fair	Remain	2.0
33	Hackberry	10.00	Poor	Remove due to poor condition	2.0
34	Hackberry (barbwire in trunk)	19.00	Fair	Remain	2.0
35	Hackberry	21.00	Poor	Remove due to poor condition	3.0
36	Pear	5.00	Fair	Remove due to building location	
37	Elm cluster	3, 3, 5, and 5	Fair	Remove due to building location	
38	Cluster of Cottonwoods and 1 Elm	5, 4 and 4	Fair	Remove due to building location	
39	Pear	4.00	Fair	Remove due to building location	
40	Pear	4.00	Fair	Remove due to building location	
41	Cottonwood cluster	5, 5 and 6	Fair	Remove (replace 6" caliper inches)	
42	Pear	3.50	Fair	Remove due to building location	
43	Elm (multi-stem)	6.00	Fair	Remove due to building location	
44	Pear	3.50	Fair	Remove due to building location	
45	Black locust cluster	6, 3, 11, 3, 3 and 5	Good	Remove (replace 17" caliper inches)	
46	Pear	3.50	Fair	Remove due to building location	
47	Cluster of Pears and 1 Cottonwood	4, 3 and 5	Fair	Remove due to building location	
48	Red oak	11.00	Good	Replace 11" caliper inches	
49	Red oak	12.00	Good	Remain (in right-of-way)	
50	Red oak	12.00	Good	Remain (in right-of-way)	
51	Red oak	14.00	Good	Remain (in right-of-way)	
52	Red oak	15.00	Fair	Remain (in right-of-way)	
53	Red oak	13.00	Good	Remain (in right-of-way)	
54	Red oak	18.00	Fair	Remain (in right-of-way)	
55	Red oak	12.00	Good	Remain (in right-of-way)	
56	Red oak	11.00	Good	Remain (in right-of-way)	
57	Red oak	11.00	Good	Remain (in right-of-way)	
58	Red oak	11.00	Good	Remain (in right-of-way)	
59	Red oak	13.50	Fair	Remain (in right-of-way)	
60	Red oak	11.50	Good	Remain (in right-of-way)	
61	Red oak	16.50	Fair	Remain (in right-of-way)	
62	Red oak	14.00	Good	Remain (in right-of-way)	
63	Red oak				

Prepared by: Lonnie Brazier, ISA Certified Arborist OH-6196A



REVISIONS

DATE	DESCRIPTION
JUNE 14, 2017	
AUGUST 14, 2017	
OCTOBER 12, 2017	

TREE SURVEY  
MARRIOTT HOTEL  
LOT #4 UPPER METRO PLACE  
CITY OF DUBLIN, FRANKLIN COUNTY, OHIO

SCALE:  
DATE: JUNE 1, 2017  
DRAWN: WCD  
DESIGNED: SAD  
CHECKED: RVP  
XREF:  
JOB NO.: 16061

STONEHENGE DUBLIN HOTEL

Page  
L900