



POOL DECK CROSS SECTION

PLANT LIST

| key | qty | common name | botanical name | size | cond |
|---------|-----|------------------------------------|---|---------|------|
| PLA ACR | | London Planetree | <i>Platanus acerifolium</i> 'Bloodgood' | 3" cal | b&b |
| FAG PUR | | Purple Leaf Beech | <i>Fagus sylvatica atropunicea</i> | 3" cal | b&b |
| AML LAE | | Allegheny Serviceberry | <i>Amelanchier laevis</i> (clump form) | 6-8' | b&b |
| CER CND | | Canadian Redbud | <i>Cercis canadensis</i> (clump form) | 6-8' | b&b |
| COR FLA | | White Flowering Dogwood | <i>Cornus florida</i> | 6-8' | b&b |
| MAG STL | | Royal Star Magnolia | <i>Magnolia stellata</i> 'Royal Star' | 5-6' ht | #7 |
| VIB PRN | | Black Haw Viburnum | <i>Viburnum prunifolium</i> | 5 gal | cont |
| PIC PUN | | Hoopsii Blue Spruce | <i>Picea pungens</i> 'Hoopsii' | 5-6' ht | b&b |
| BUX GEM | | Green Gem Boxwood | <i>Buxus sempervirens</i> 'Green Gem' | 18" spr | cont |
| CHM GRC | | Gracilis Kinokil Falsecypress | <i>Chamaecyparis obtusa</i> 'Gracilis' | 36" ht | cont |
| TAX EVR | | Everlow Yew | <i>Taxus media</i> 'Everlow' | 18" spr | cont |
| TAX REP | | Repandens Yew | <i>Taxus baccata</i> 'Repandens' | 18" spr | cont |
| BOT BUK | | Bottlebrush Buckeye | <i>Aesculus parviflora</i> | 5 gal | cont |
| LTL HEN | | Little Henry Sweetspire | <i>Itea virginiana</i> 'Little Henry' | 3 gal | cont |
| EUO ALA | | Burning Bush | <i>Euonymus alatus</i> | 3 gal | cont |
| HYD SUM | | Sweet Summer Hydrangea | <i>Hydrangea paniculata</i> 'Sweet Summer' | 3 gal | cont |
| COT APL | | Cranberry Cotoneaster | <i>Cotoneaster apiculata</i> | 3 gal | cont |
| RED DOG | | Red Twig Dogwood | <i>Cornus alba</i> 'Elegantissima' | 5 gal | cont |
| SPI GLD | | Gold Flame Spirea | <i>Spiraea bumalda</i> 'Gold Flame' | 5 gal | cont |
| SYR VUL | | Paul Thirion Lilac | <i>Syringa vulgaris</i> 'Paul Thirion' | 5 gal | cont |
| VIB CAR | | Compact Korean Spice Viburnum | <i>Viburnum carlesii</i> 'Compactum' | 24" ht | cont |
| KAR FOR | | Karl Foerster's Feather Reed Grass | <i>Calamagrostis acutifolia</i> 'Karl Foerster's' | 2 gal | cont |
| PEO COR | | Cora Louise Peony | <i>Paeonia itoh</i> 'Cora Louise' | 2 gal | cont |
| SED AUT | | Autumn Fire Sedum | <i>Sedum spectabile</i> 'Autumn Fire' | 1 gal | cont |
| RUD GLD | | Black-Eyed Susan | <i>Rudbeckia fulgida</i> 'Goldsturm' | 1 gal | cont |
| GER ROZ | | Rozanne Cranesbill | <i>Geranium wallichianum</i> 'Rozanne' | 1 gal | cont |
| MBM COR | | Moonbeam Coreopsis | <i>Coreopsis verticillata</i> 'Moonbeam' | 1 gal | cont |
| HAP DAY | | Happy Returns Daylily | <i>Hemerocallis</i> 'Happy Returns' | 1 gal | cont |
| HOS WEE | | Wheee Hosta | <i>Hosta Shadowland</i> 'Wheee' | 1 gal | cont |
| CIN BEL | | Cinnamon Curis Coral Bells | <i>Huechera Dolce</i> 'Cinnamon Curis' | 1 gal | cont |
| BLD HRT | | Bleeding Heart | <i>Dicentra spectabilis</i> | 1 gal | cont |
| AST MAG | | False Spirea | <i>Astilbe</i> 'Maggie Daley' | 1 gal | cont |
| JAP FRN | | Japanese Painted Fern | <i>Athyrium niponicum</i> | 1 gal | cont |
| NEW FRN | | New York Fern | <i>Thelypteris novaboracensis</i> | 1 gal | cont |
| OST FRN | | Ostrich Fern | <i>Matteuccia struthiopteris</i> | 1 gal | cont |
| BOS IVY | | Boston ivy | <i>Parthenocissus tricuspidata</i> | 1 gal | cont |
| TUL VAR | | Tulips | <i>Tulipa</i> varieties | | bulb |



**YODER RESIDENCE
SITE LANDSCAPE PLAN**

AUGUST 14, 2017



0 10 20
GRAPHIC SCALE IN FEET



LONDON PLANETREE



PURPLE LEAF BEECH



ALLEGHENY SERVICEBERRY



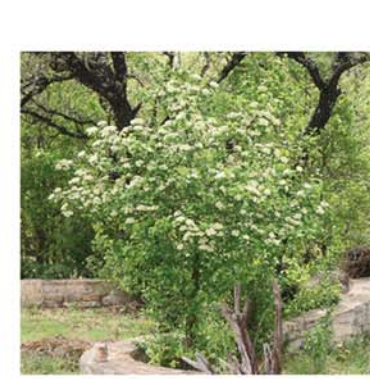
CANADIAN REDBUD



FLOWERING DOGWOOD



ROYAL STAR MAGNOLIA



BLACK HAW VIBURNUM



PAUL THIRION LILAC



BLUE SPRUCE



GRACILIS HINOKI FALSECYPRESS



LITTLE GEM BOXWOOD



EVERLOW YEW



REPANDENS YEW



BOTTLEBRUSH BUCKEYE



LITTLE HENRY ITEA



BURNING BUSH



SWEET SUMMER HYDRANGEA



CRANBERRY COTONEASTER



RED TWIG DOGWOOD



GOLDFLAME SPIREA



KOREAN SPICE VIBURNUM



FEATHER REED GRASS



CORA LOUISE PEONY



AUTUMN FIRE SEDUM



BLACK-EYED SUSAN



ROZANNE GERANIUM



MOONBEAM COREOPSIS



HAPPY RETURNS DAYLILY



WHEE HOSTA



CINNAMON CURLS COARL BELLS



MAGGIE DALEY ASTILBE



BLEEDING HEART



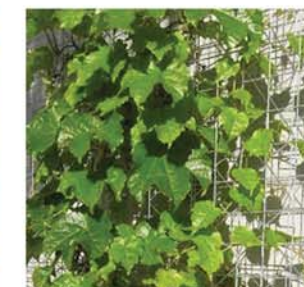
PAINTED FERN



OSTRICH FERN



PERIWINKLE



BOSTON IVY

**YODER RESIDENCE
PRELIMINARY
LANDSCAPE
PALETTE**

AUGUST 14, 2017

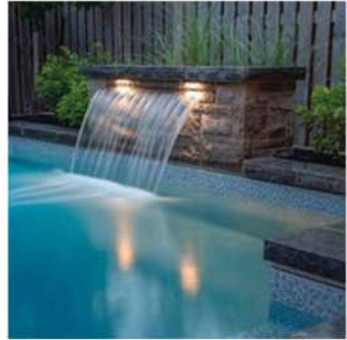
G2 Planning + Design
Planning | Urban Design | Landscape Architecture



SPLASH POOL EXAMPLE



HOT TUB EXAMPLE



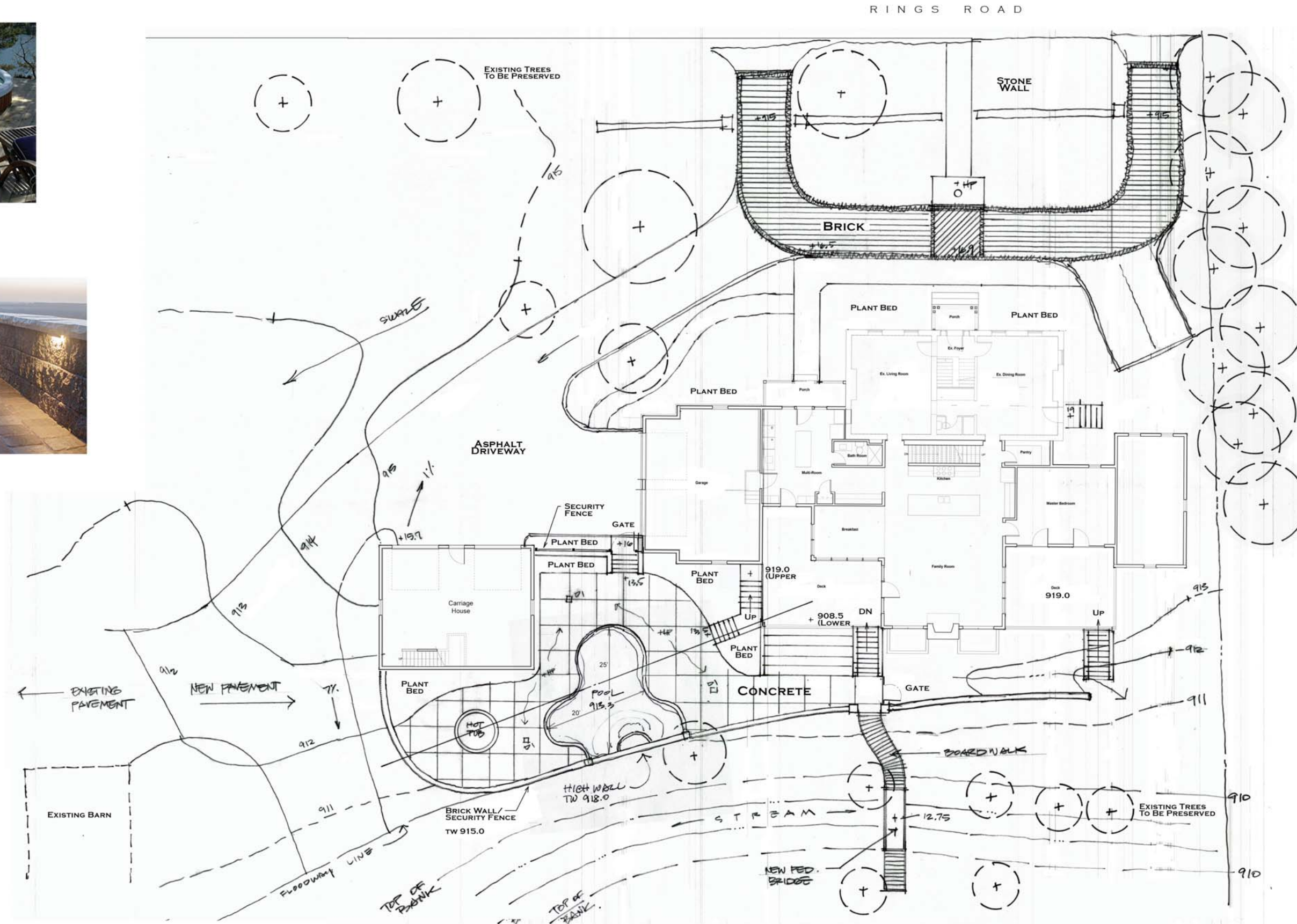
WATER FOUNTAIN EXAMPLE



SEAT WALL EXAMPLE



PEDESTRIAN BRIDGE EXAMPLE



YODER RESIDENCE SITE LAYOUT AND GRADING PLAN

AUGUST 14, 2017

