

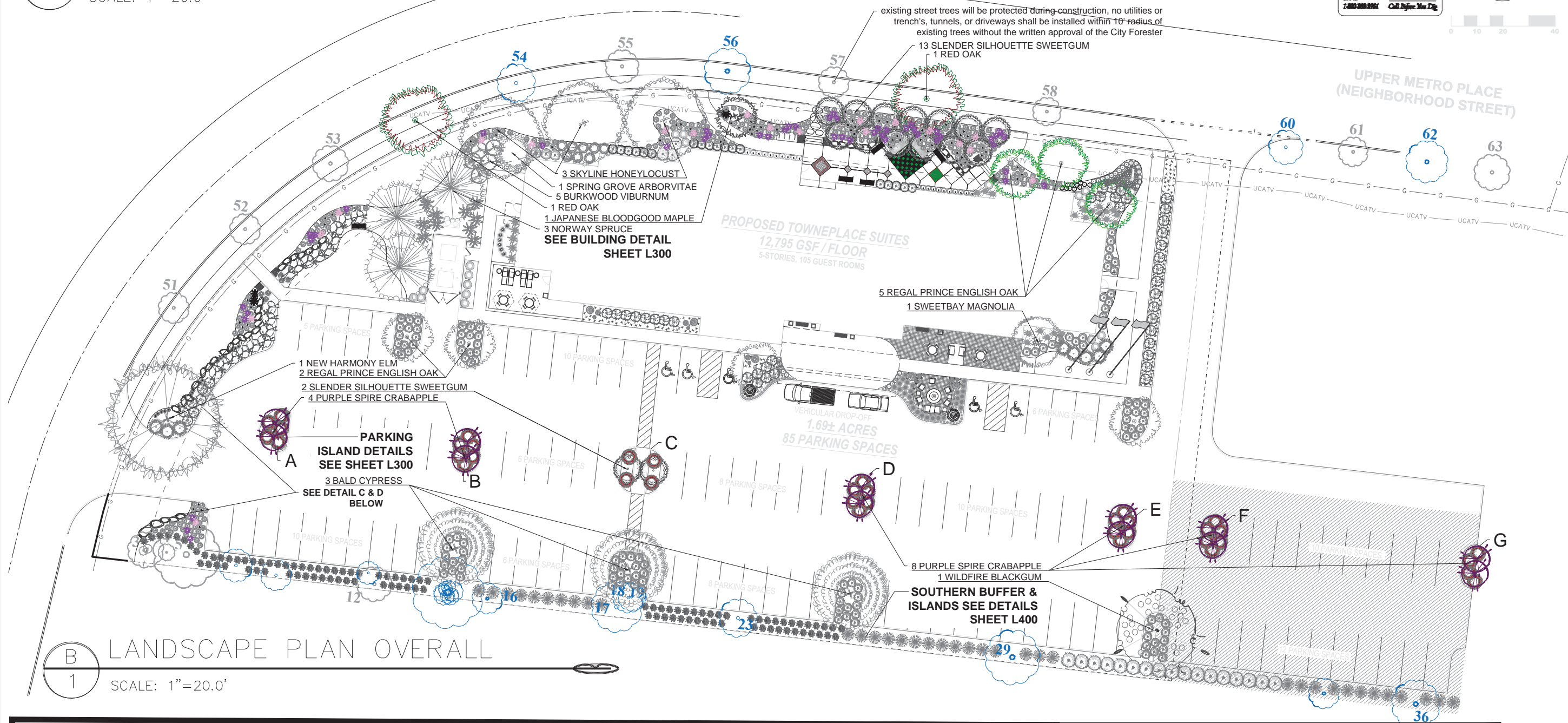
A
1

LANDSCAPE PLAN OVERALL

SCALE: 1"=20.0'



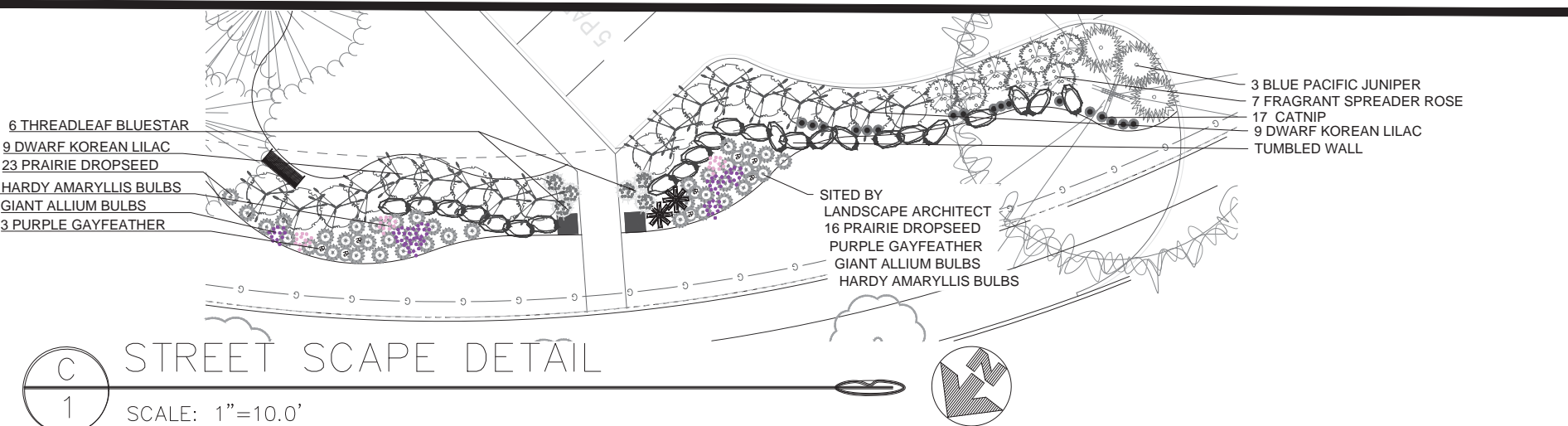
0 10 20 40



B
1

LANDSCAPE PLAN OVERALL

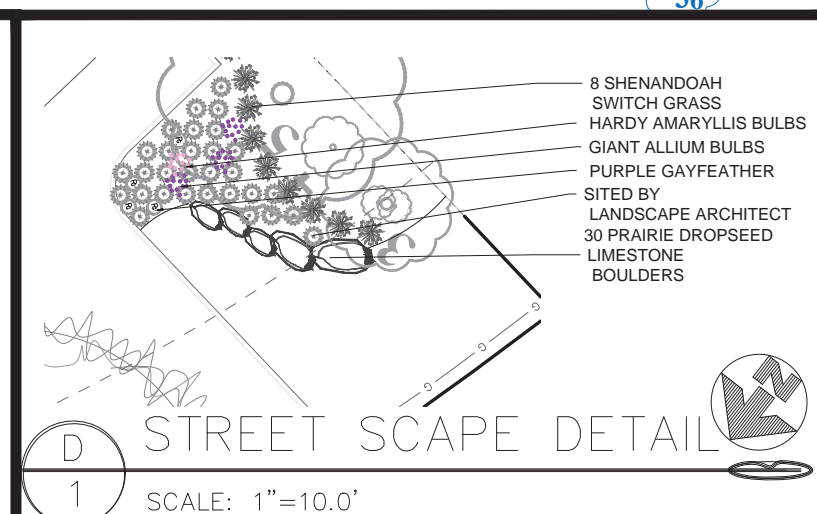
SCALE: 1"=20.0'



C
1

STREET SCAPE DETAIL

SCALE: 1"=10.0'



D
1

STREET SCAPE DETAIL

SCALE: 1"=10.0'

Gayle A. Frazer
Registered Landscape Architect

REVISIONS

AUGUST 10, 2017
AUGUST 15, 2017

LANDSCAPE PLAN
MARRIOTT HOTEL
LOT #4 UPPER METRO PLACE
CITY OF DUBLIN, FRANKLIN COUNTY, OHIO

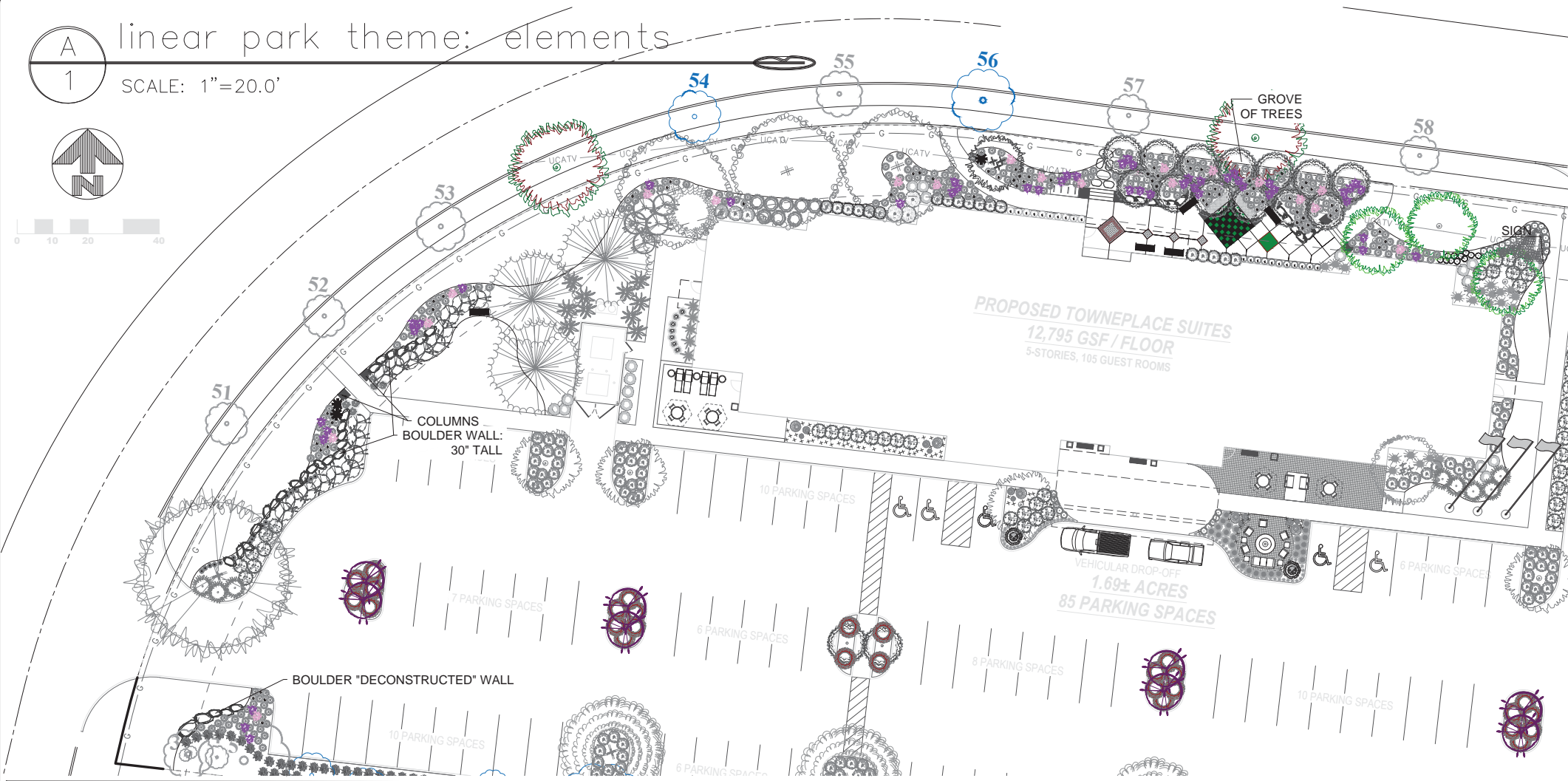
SCALE: 1"=20'
DATE: JUNE 1, 2017
DRAWN: WCD
DESIGNED: SAD
CHECKED: RVP
XREF:
JOB NO.: 16061
STONEHENGE DUBLIN HOTEL

Page
L100

A
1

linear park theme: elements

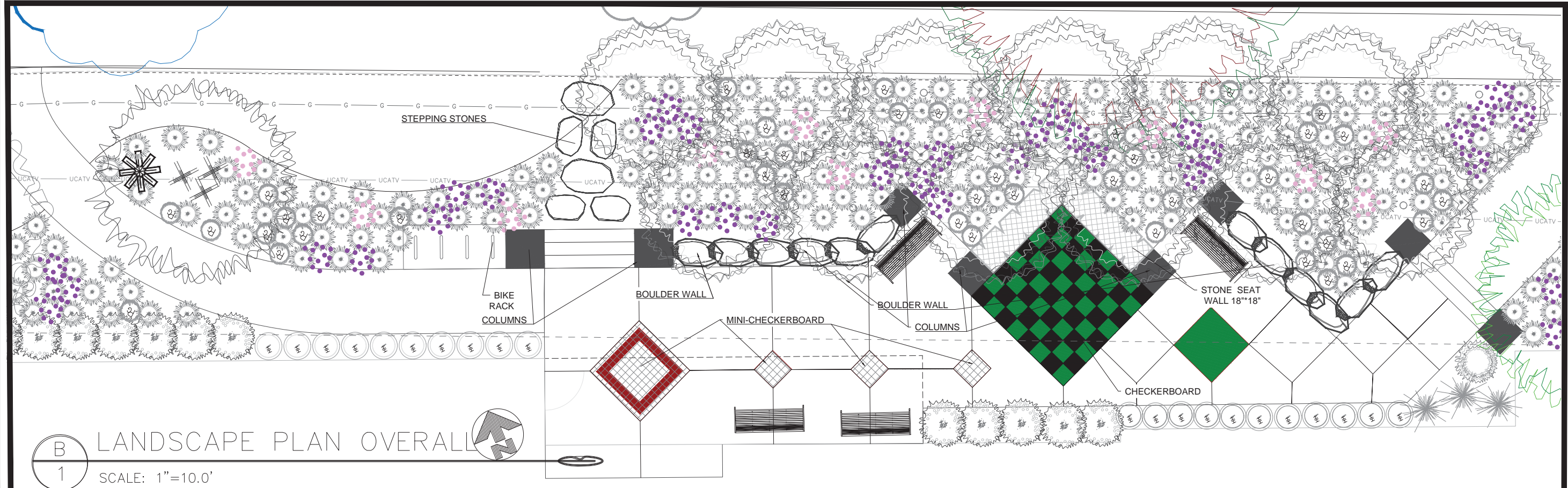
SCALE: 1"=20.0'



B
1

LANDSCAPE PLAN OVERALL

SCALE: 1"=10.0'





- existing trees will be protected during construction, no utilities or trench's, tunnels, or driveways shall be installed within 10' radius of existing trees without the written approval of the City Forester

[illegible]

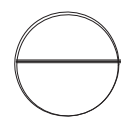
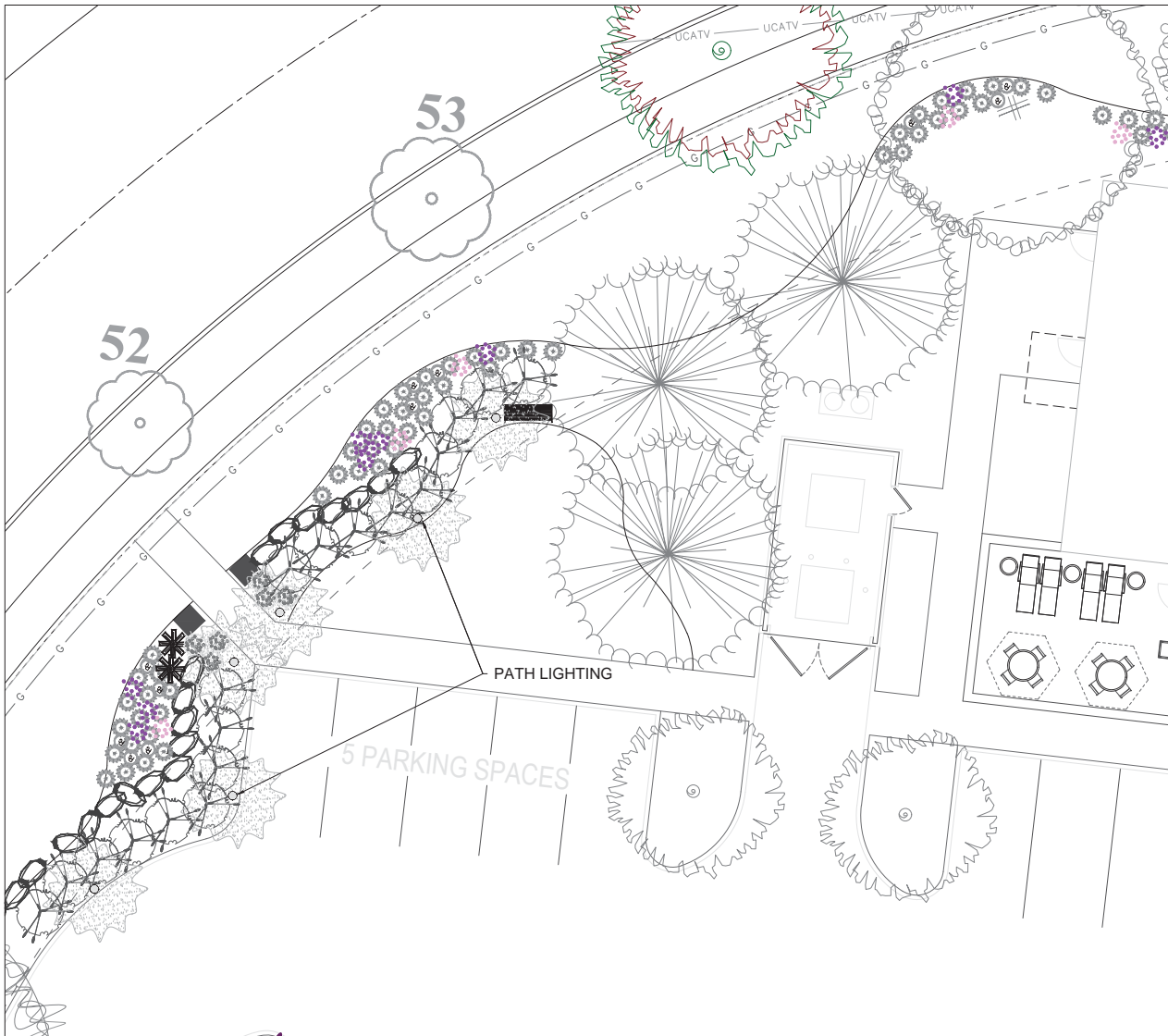
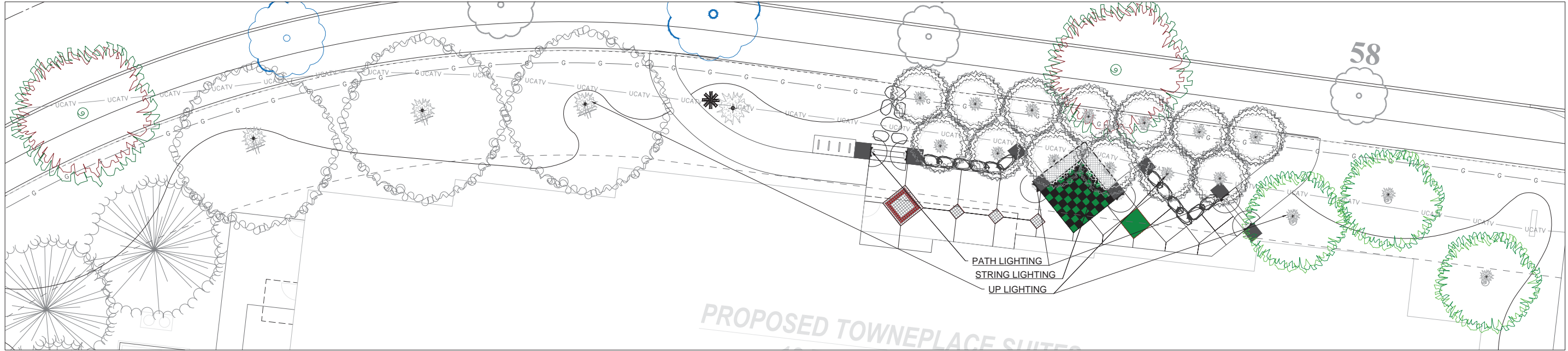
LANDSCAPE PLAN
MARRIOTT HOTEL
LOT #4 UPPER METRO PLACE
CITY OF DUBLIN, FRANKLIN COUNTY, OHIO

SCALE: 1"=20'
DATE: JUNE 1, 2017
DRAWN: WCD
DESIGNED: SAD
CHECKED: RVP
XREF:
JOB NO.: 16061

STONEHENGE DUBLIN HOTEL

Page

L400



LIGHTING PLAN: PARK

SCALE: 1"=10.0'

REVISIONS

↑ AUGUST 10, 2017

↑ AUGUST 15, 2017

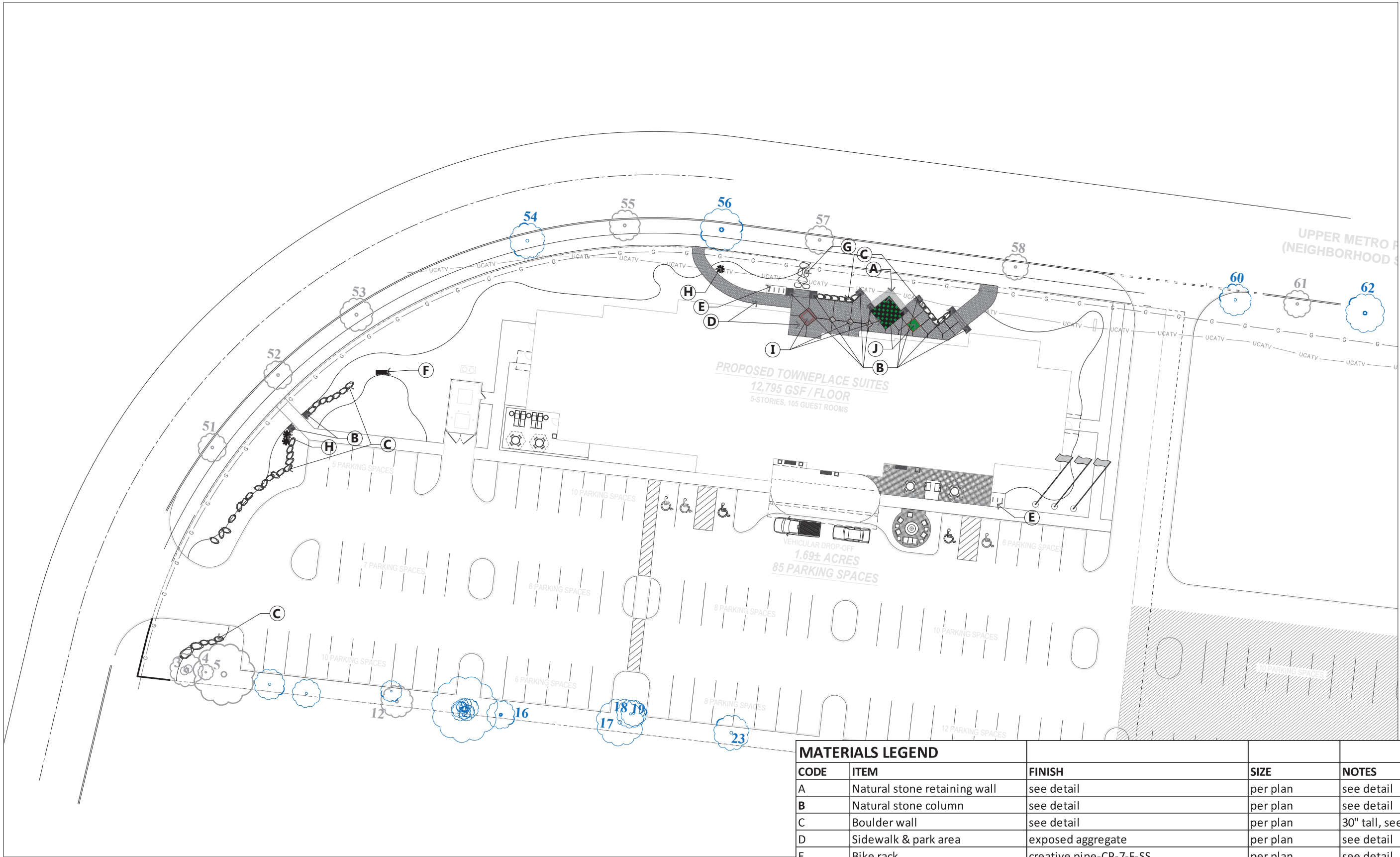
LANDSCAPE PLAN
MARRIOTT HOTEL
LOT #4 UPPER METRO PLACE
CITY OF DUBLIN, FRANKLIN COUNTY, OHIO

SCALE: 1"=20'
DATE: JUNE 1, 2017
DRAWN: WCD
DESIGNED: SAD
CHECKED: RVP
XREF:
JOB NO.: 16061

STONEHENGE DUBLIN HOTEL

Page

L500



A
1

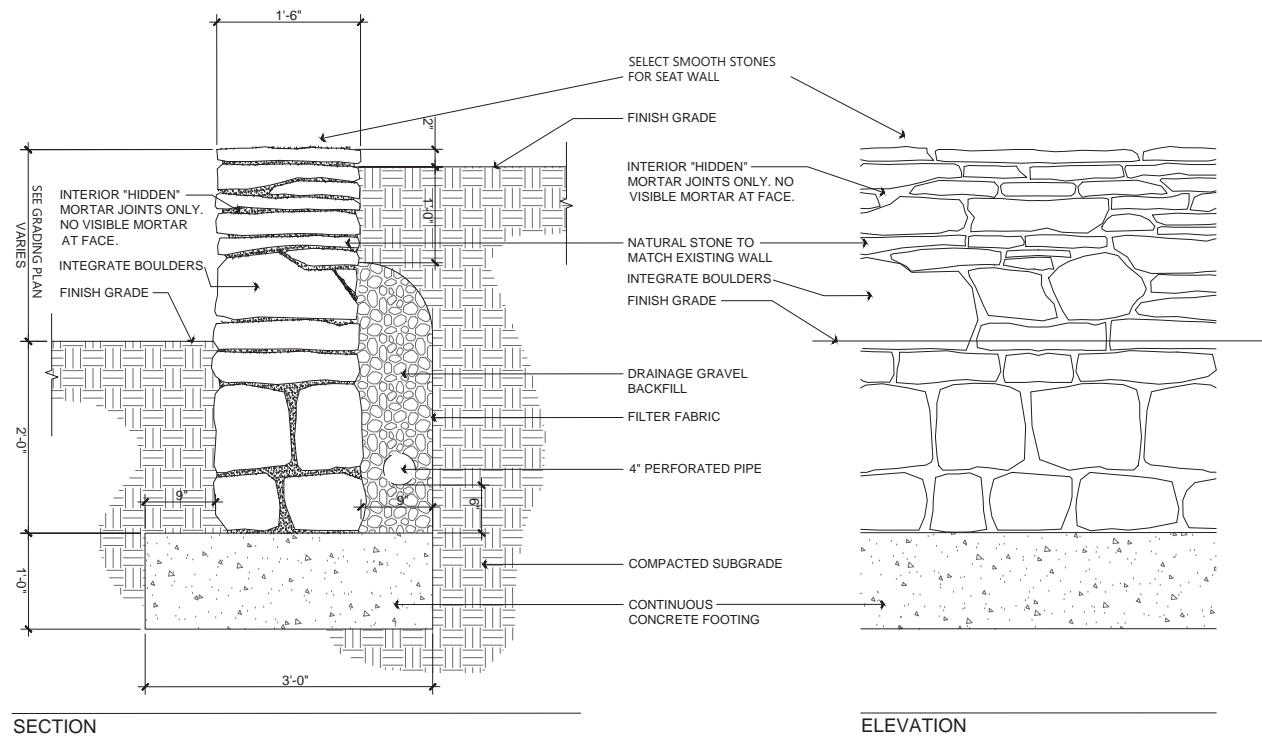
MATERIALS LEGEND

MATERIALS LEGEND				
CODE	ITEM	FINISH	SIZE	NOTES
A	Natural stone retaining wall	see detail	per plan	see detail
B	Natural stone column	see detail	per plan	see detail
C	Boulder wall	see detail	per plan	30" tall, see detail
D	Sidewalk & park area	exposed aggregate	per plan	see detail
E	Bike rack	creative pipe-CP-7-F-SS	per plan	see detail
F	Bench	Steel Arch Bench SKU: 2ZI2217	per plan	see detail
G	Natural stone steppers	TBD	per plan	
H	Sculpture	TBD	per plan	
I	Pavers	Unilock SERIES 3000		
J	Turf		per plan	see detail
K	Trash receptacle	Landscape forms-Scarborough-silver	TBD	TBD

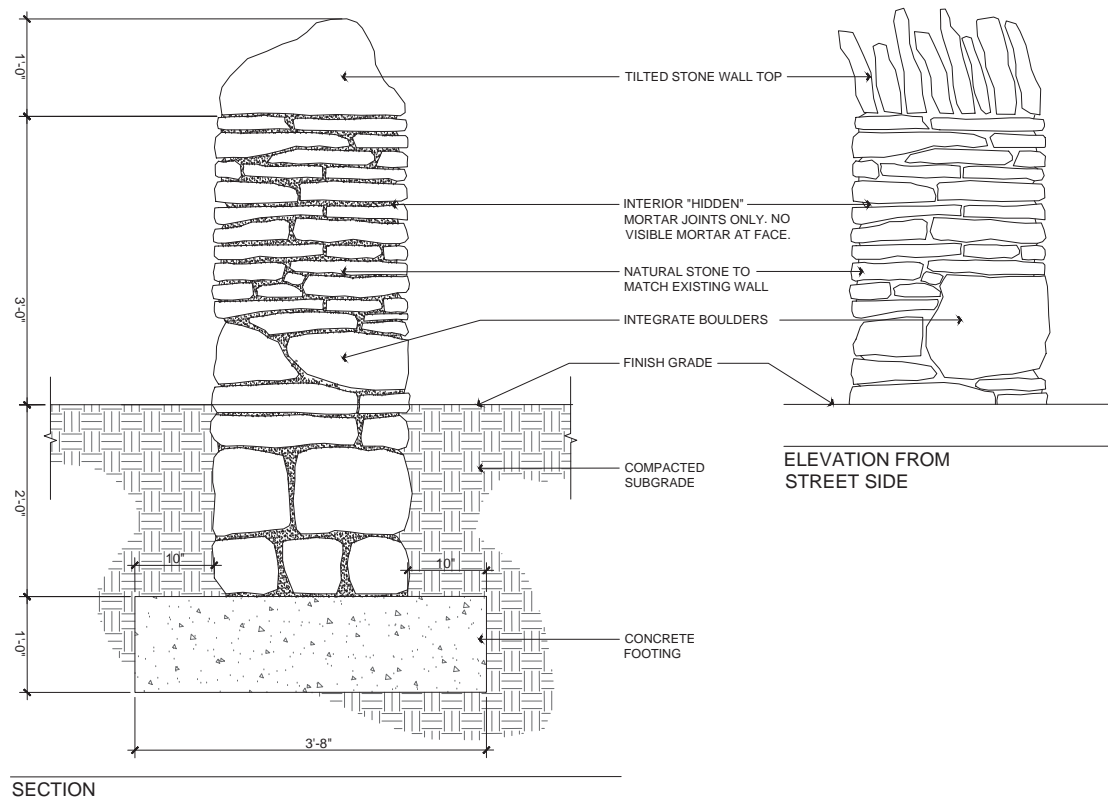
REVISIONS	
JUNE 14, 2017	
AUGUST 14, 2017	

LANDSCAPE PLAN
MARRIOTT HOTEL
LOT #4 UPPER METRO PLACE
CITY OF DUBLIN, FRANKLIN COUNTY, OHIO

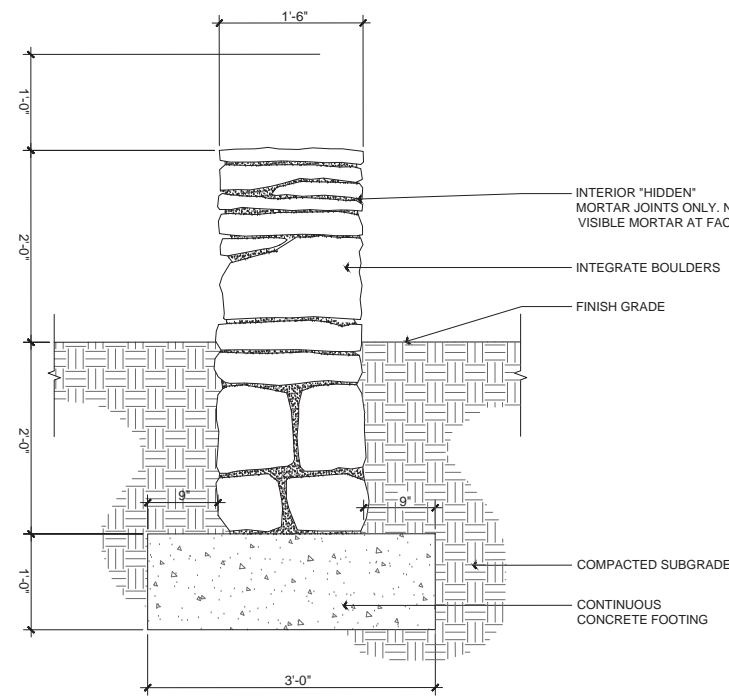
SCALE: 1"=20'
DATE: JUNE 1, 2017
DRAWN: WCD
DESIGNED: SAD
CHECKED: RVP
XREF:
JOB NO.: 16061
STONEHENGE DUBLIN HOTEL



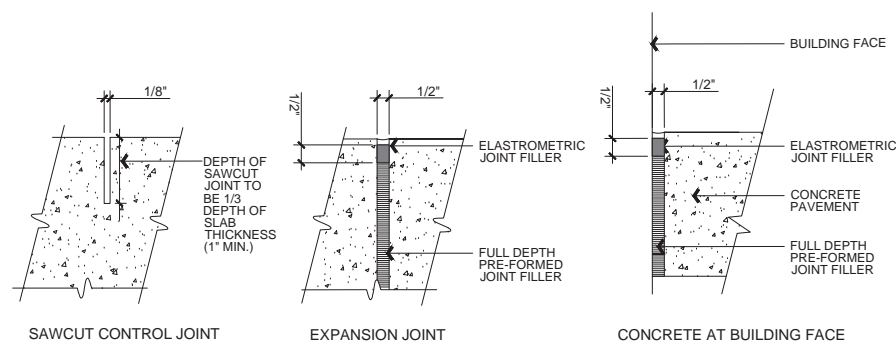
A NATURAL STONE WALL - RETAINING
SCALE: 1" = 1'-0"



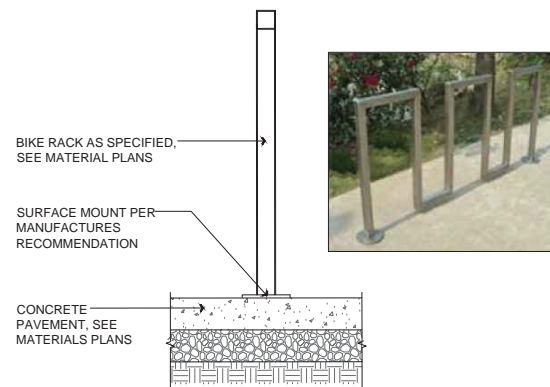
B NATURAL STONE COLUMN
SCALE: 1" = 1'-0"



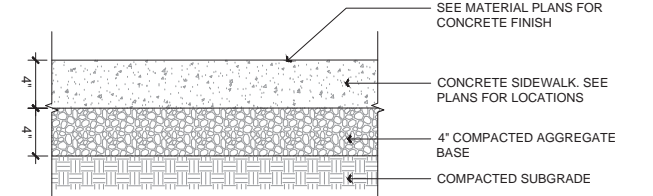
C NATURAL STONE WALL - FREE STANDING
SCALE: 1" = 1'-0"



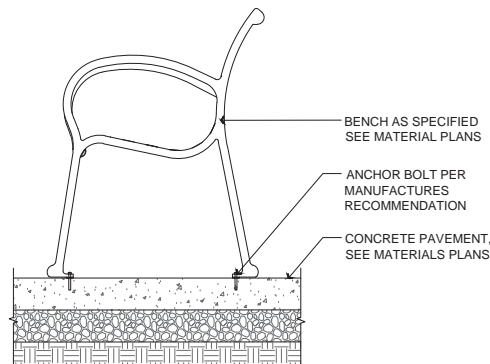
D1 EXPANSION AND CONTROL JOINTS: EXPOSED AGGREGATE
SCALE: 3" = 1'-0"



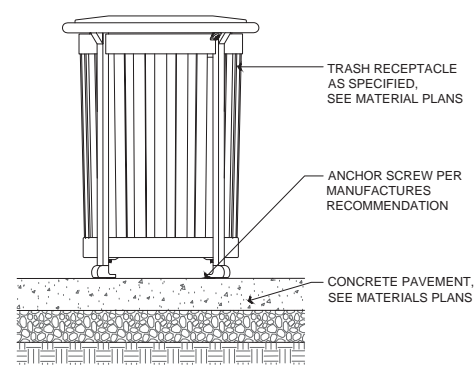
E BIKE RACK MOUNTING
SCALE: 1" = 1'-0"



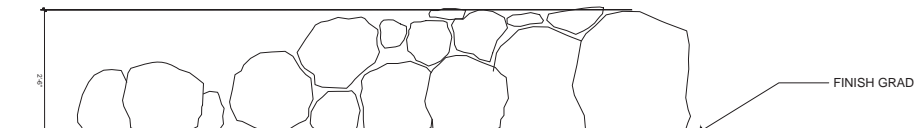
D2 PEDESTRIAN CONCRETE SIDEWALK: EXPOSED AGGREGATE
SCALE: 1-1/2" = 1'-0"



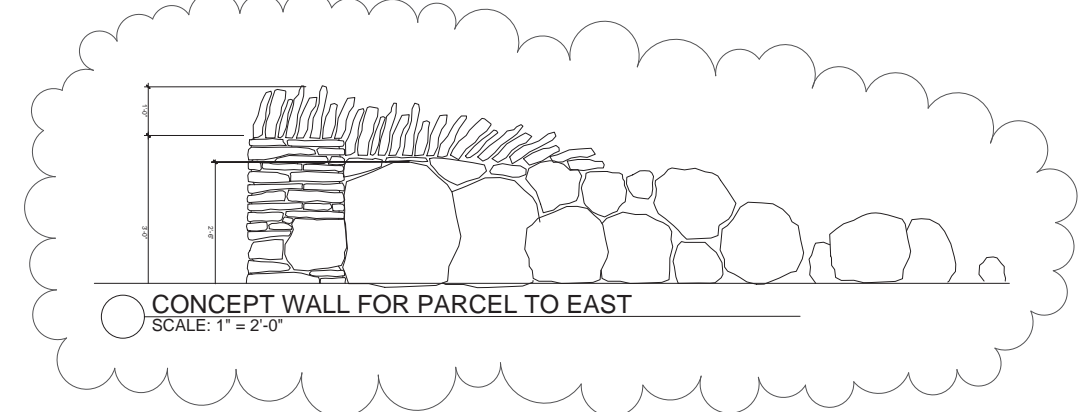
F BENCH MOUNTING
SCALE: 1" = 1'-0"



K TRASH RECEPTACLE
SCALE: 1" = 1'-0"



C BOULDER WALL
SCALE: 1" = 2'-0"



C CONCEPT WALL FOR PARCEL TO EAST
SCALE: 1" = 2'-0"

SPECIFICATIONS AND DETAILS

GENERAL NOTES

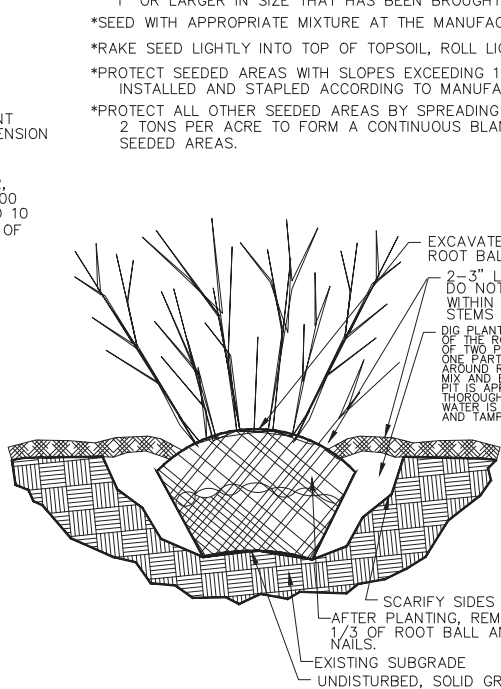
- *ALL TREES AND SPECIMEN PLANT MATERIAL SHALL BE APPROVED BY LANDSCAPE ARCHITECT.
- *PROVIDE QUALITY, SIZE, GENUS, SPECIES, AND VARIETY OF EXTERIOR PLANTS INDICATED, COMPLYING WITH APPLICABLE REQUIREMENTS IN ANSI Z60.1, "AMERICAN STANDARD FOR NURSERY STOCK."
- *FURNISH NURSERY-GROWN TREES AND SHRUBS COMPLYING WITH ANSI Z60.1, WITH HEALTHY ROOT SYSTEMS DEVELOPED BY TRANSPLANTING OR ROOT PRUNING. PROVIDE WELL-SHAPED, FULLY BRANCHED, HEALTHY, VIGOROUS STOCK, FREE OF DISEASE, INSECTS, EGGS, LARVAE, AND DEFECTS SUCH AS KNOTS, SUN SCALD, INJURIES, ABRASIONS, AND DISFIGUREMENT.
- *PROVIDE TREES AND SHRUBS OF SIZES AND GRADES COMPLYING WITH ANSI Z60.1 FOR TYPE OF TREES AND SHRUBS REQUIRED. TREES AND SHRUBS OF A LARGER SIZE MAY BE USED, IF ACCEPTABLE TO LANDSCAPE ARCHITECT, WITH A PROPORTIONATE INCREASE IN SIZE OF ROOTS OR BALLS.
- *IF FORMAL ARRANGEMENTS OR CONSECUTIVE ORDER OF TREES OR SHRUBS IS SHOWN, SELECT STOCK FOR UNIFORM HEIGHT AND SPREAD, AND NUMBER LABEL TO ASSURE SYMMETRY IN PLANTING.
- *LABEL AT LEAST ONE TREE AND ONE SHRUB OF EACH VARIETY AND CALIPER WITH A SECURELY ATTACHED, WATERPROOF TAG BEARING LEGIBLE DESIGNATION OF BOTANICAL AND COMMON NAME.
- *LANDSCAPE ARCHITECT MAY OBSERVE TREES AND SHRUBS EITHER AT PLACE OF GROWTH OR AT SITE BEFORE PLANTING FOR COMPLIANCE WITH REQUIREMENTS FOR GENUS, SPECIES, VARIETY, SIZE, AND QUALITY. LANDSCAPE ARCHITECT RETAINS RIGHT TO OBSERVE TREES AND SHRUBS FURTHER FOR SIZE AND CONDITION OF BALLS AND ROOT SYSTEMS, INSECTS, INJURIES, AND LATENT DEFECTS AND TO REJECT UNSATISFACTORY OR DEFECTIVE MATERIAL AT ANY TIME DURING PROGRESS OF WORK. REMOVE REJECTED TREES OR SHRUBS IMMEDIATELY FROM PROJECT SITE.
- *TOPSOIL SHALL BE ASTM D 5268, pH RANGE OF 5.5 TO 7, A MINIMUM OF 4 PERCENT ORGANIC MATERIAL CONTENT; FREE OF STONES 1 INCH OR LARGER IN ANY DIMENSION AND OTHER EXTRANEOUS MATERIALS HARMFUL TO PLANT GROWTH.
- *COMPOST SHALL BE WELL-COMPOSTED, STABLE, AND WEED-FREE ORGANIC MATTER. pH RANGE OF 5.5 TO 8; MOISTURE CONTENT 35 TO 55 PERCENT BY WEIGHT; 100 PERCENT PASSING THROUGH ONE INCH SIEVE; SOLUBLE SALT CONTENT OF 5 TO 10 DECISIEMENS/M; NOT EXCEEDING 0.5 PERCENT INERT CONTAMINANTS AND FREE OF SUBSTANCES TOXIC TO PLANTINGS.
- *FERTILIZER TO BE SLOW-RELEASE, GRANULAR OR PELLETED CONSISTING OF 50 PERCENT WATER-INSOLUBLE NITROGEN, PHOSPHORUS, AND POTASSIUM IN AMOUNTS RECOMMENDED FOR TYPE OF PLANT BEING GROWN.
- *MULCH TO BE FREE FROM DELETERIOUS MATERIALS AND SUITABLE AS A TOP DRESSING OF TREES AND SHRUBS, AND WILL BE EITHER SHREDDED HARDWOOD OR PINE STRAW UNLESS NOTED OTHERWISE.
- PREPARATION AND PLANTING
- *LOCATE ALL UNDERGROUND UTILITIES PRIOR TO STARTING WORK. IF A PLANT IS SHOWN ON THE PLAN WITHIN THREE FEET OF AN UNDERGROUND UTILITY, NOTIFY LANDSCAPE ARCHITECT FOR ADJUSTMENT INSTRUCTIONS.
- *PROTECT STRUCTURES, UTILITIES, SIDEWALKS, PAVEMENTS, AND OTHER FACILITIES, AND LAWNS AND EXISTING EXTERIOR PLANTS FROM DAMAGE CAUSED BY PLANTING OPERATIONS.
- *PROVIDE EROSION-CONTROL MEASURES TO PREVENT EROSION OR DISPLACEMENT OF SOILS AND DISCHARGE OF SOIL-BEARING RUNOFF OR AIRBORNE DUST TO ADJACENT PROPERTIES AND WALKWAYS.
- *LAY OUT INDIVIDUAL TREE AND SHRUB LOCATIONS AND AREAS FOR MULTIPLE EXTERIOR PLANTINGS. STAKE LOCATIONS, OUTLINE AREAS, ADJUST LOCATIONS WHEN REQUESTED, AND OBTAIN LANDSCAPE ARCHITECT'S ACCEPTANCE OF LAYOUT BEFORE PLANTING. MAKE MINOR ADJUSTMENTS AS REQUIRED.
- *TREES SHALL BE SITED IN FIELD BY LANDSCAPE ARCHITECT WHERE NOTED ON PLANS.
- *ALL PLANTING BEDS ARE TO BE PREPARED AS FOLLOWS :
- LOOSEN SUBGRADE TO A DEPTH OF 4 - 6". REMOVE STONES LARGER THAN 1" IN ANY DIMENSION AND STICKS, ROOTS, RUBBISH, AND OTHER EXTRANEOUS MATTER, AND LEGALLY DISPOSE OF THEM OFF OWNER'S PROPERTY.
 - SPREAD COMPOST AT A DEPTH OF 4 - 6" AND TILL WITH LOOSENED SUBGRADE, MIXING THOROUGHLY.
 - GRADE PLANTING BEDS TO A SMOOTH, UNIFORM SURFACE PLANE WITH LOOSE, UNIFORMLY FINE TEXTURE. ROLL AND RAKE, REMOVE RIDGES, AND FILL DEPRESSIONS TO MEET FINISH GRADES.
 - EDGE BEDS 3 - 4" DEEP (SEE DETAIL).
- *NOTIFY LANDSCAPE ARCHITECT IF SUBSOIL CONDITIONS SHOW EVIDENCE OF UNEXPECTED WATER SEEPAGE OR RETENTION IN TREE OR SHRUB PITS.
- *ALL PLANTS ARE TO BE FERTILIZED WITH A SLOW- RELEASE FERTILIZER PER MANUFACTURER'S WRITTEN INSTRUCTIONS.
- *REFER TO TYPICAL PLANTING DETAILS FOR PLANT INSTALLATION.
- *IT IS THE CONTRACTOR'S OPTION WHETHER OR NOT TO STAKE A TREE, BUT IT IS ALSO THE CONTRACTOR'S RESPONSIBILITY TO ASSURE PLANTS REMAIN IN AN UPRIGHT POSITION UNTIL THE END OF THE WARRANTY PERIOD.
- *ALL PLANTING BEDS AND INDIVIDUAL TREES AND SHRUBS ARE TO BE MULCHED AT A DEPTH OF 2 - 3". APPLY PRE-EMERGENT HERBICIDE BEFORE MULCHING PER MANUFACTURER'S WRITTEN INSTRUCTIONS.
- *FOR ALL PLANT MATERIALS, PRUNE TO REMOVE DEAD OR INJURED BRANCHES ONLY, UNLESS OTHERWISE DIRECTED BY LANDSCAPE ARCHITECT.
- *IT IS THE CONTRACTOR'S RESPONSIBILITY TO:
- KEEP ADJACENT PAVINGS AND CONSTRUCTION CLEAN, AND MAINTAIN WORK AREA IN AN ORDERLY CONDITION, FOR DURATION OF PROJECT.
 - PROTECT EXTERIOR PLANTS FROM DAMAGE DUE TO LANDSCAPE OPERATIONS, OPERATIONS BY OTHER CONTRACTORS AND TRADES, AND OTHERS. MAINTAIN PROTECTION DURING INSTALLATION AND MAINTENANCE PERIODS. TREAT, REPAIR, OR REPLACE DAMAGED EXTERIOR PLANTING.
 - REMOVE SURPLUS SOIL AND WASTE MATERIAL, INCLUDING EXCESS SUBSOIL, UNSUITABLE SOIL, TRASH, AND DEBRIS, AND LEGALLY DISPOSE OF THEM OFF OWNER'S PROPERTY.

WARRANTY

- *CONTRACTOR SHALL PROVIDE OWNER WITH A WRITTEN WARRANTY FOR LABOR AND MATERIALS.
- *CONTRACTOR SHALL WARRANT EXTERIOR PLANTS AGAINST DEFECTS, INCLUDING DEATH AND UNSATISFACTORY GROWTH, EXCEPT FOR DEFECTS RESULTING FROM LACK OF ADEQUATE MAINTENANCE, NEGLECT OR ABUSE BY OWNER, OR INCIDENTS THAT ARE BEYOND CONTRACTOR'S CONTROL.
- *WARRANTY SHALL INCLUDE SPECIFIC WARRANTY PERIODS FOR TREES AND SHRUBS, GROUND COVERS, AND OTHER EXTERIOR PLANTS.
- *SERVICES PROVIDED BY WARRANTY SHALL INCLUDE :
- MAINTAINING UPRIGHT POSITION OF EXTERIOR PLANTINGS DURING WARRANTY PERIOD.
 - IMMEDIATE REMOVAL OF DEAD EXTERIOR PLANTS AND IMMEDIATE REPLACEMENT, UNLESS REQUIRED TO PLANT IN THE SUCCEEDING PLANTING SEASON.
 - REPLACEMENT OF EXTERIOR PLANTS THAT ARE MORE THAN 25 PERCENT DEAD OR IN UNHEALTHY CONDITION AT END OF WARRANTY PERIOD.
- *WARRANTY SHALL BE LIMITED TO ONE REPLACEMENT OF EACH EXTERIOR PLANT, EXCEPT FOR LOSSES OR REPLACEMENTS DUE TO FAILURE OF CONTRACTOR TO COMPLY WITH REQUIREMENTS.

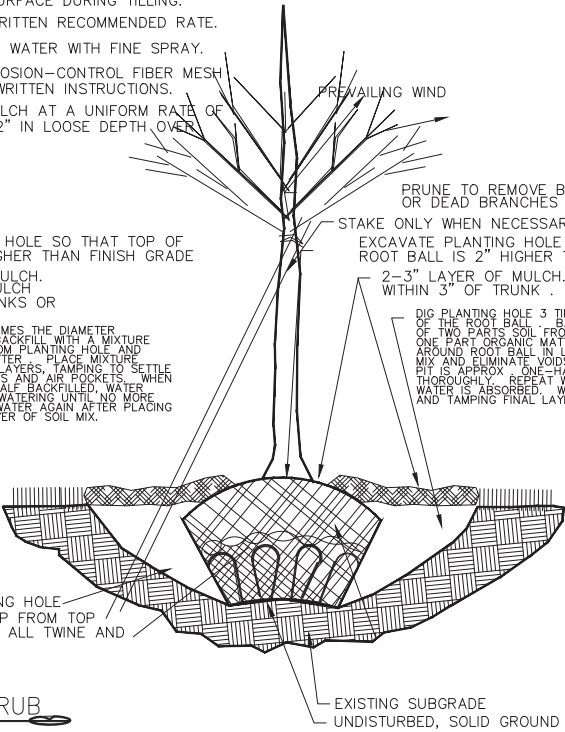
SEEDING:

- *SEED ALL DISTURBED AREAS. THE FINAL GRADE AND TOPSOIL WITHIN +/- .10 FEET WILL BE IN PLACE FOR SEEDING CONTRACTOR.
- *APPLY A HIGH PHOSPHORUS FERTILIZER AT THE RATE OF 2-3 LB PER 1000 SF.
- *TILL AREA TO BE SEED TO A DEPTH OF 4". RAKE TILLED AREA TO REMOVE DEBRIS 1" OR LARGER IN SIZE THAT HAS BEEN BROUGHT TO THE SURFACE DURING TILLING.
- *SEED WITH APPROPRIATE MIXTURE AT THE MANUFACTURER'S WRITTEN RECOMMENDED RATE.
- *RAKE SEED LIGHTLY INTO TOP OF TOPSOIL, ROLL LIGHTLY, AND WATER WITH FINE SPRAY.
- *PROTECT SEED TO BE SLOPES EXCEEDING 1:6 WITH EROSION-CONTROL FIBER MESH INSTALLED AND STAPLED ACCORDING TO MANUFACTURER'S WRITTEN INSTRUCTIONS.
- *PROTECT ALL OTHER SEED TO BE AREAS BY SPREADING STRAW MULCH AT A UNIFORM RATE OF 2 TONS PER ACRE TO FORM A CONTINUOUS BLANKET 1-1/2" IN LOOSE DEPTH OVER SEED TO BE AREAS.



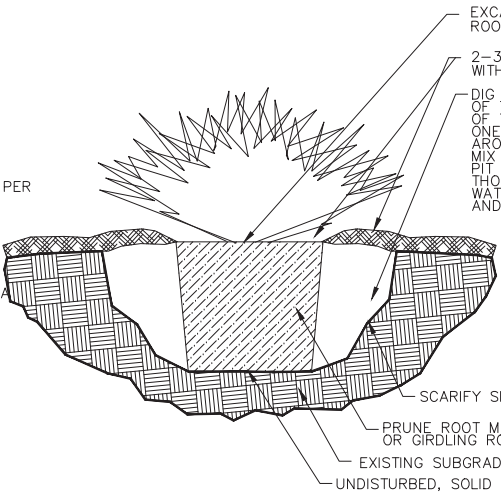
PLANTING DETAIL : BALLED AND BURLAPPED SHRUB

NOT TO SCALE



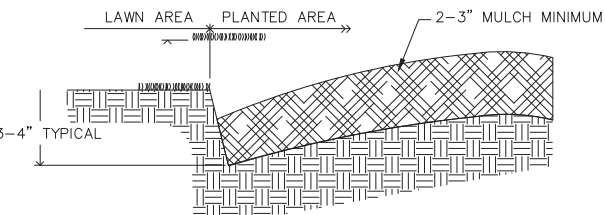
PLANTING DETAIL : BALLED AND BURLAPPED TREE

NOT TO SCALE



PLANTING DETAIL : CONTAINERIZED PLANTS

NOT TO SCALE



BED EDGE SHALL NOT BE ROUGH, BUT CLEAN, SMOOTH, AND CONTINUOUS AS SHOWN ON PLANS. MINOR FIELD ADJUSTMENTS ARE ALLOWED DUE TO UNEXPECTED OBSTRUCTIONS.

PLANTING DETAIL : BED EDGE

NOT TO SCALE

PLANT KEY

8.15.17

QNT	SIZE	REPLACEMENT INCHES	required plantings per sec. 153.0854	LATIN	COMMON
1	2 in	2		Ulmus americana 'New Harmony'	New Harmony American Elm
4	2 in	8		Quercus robur 'Rosehill'	Rosehill Columnar English Oak
13	2 in	26		Liquidambar styraciflua 'Slender Silhouette'	Sweetgum slender silhouette
3	2 in	6		Gleditsia triacanthos inermis 'Skyline'	Skyline Honeylocust
3	2 in	6		Quercus robur 'Rosehill'	Rosehill Columnar English Oak
		48		47 CALIPER INCHES REQUIRED PER TREE SURVEY TO BE REPLACED: PROVIDED	
2	2.5	5		Quercus rubra	Red Oak
				(D)(3)(a)2 street trees replaced	
37	3 gal			Rhus aromatica 'Gro-Low'	Gro-Low Fragrant Sumac
12	2 in			Malus x 'Jefspire'	Purple Spire Columnar Crabapple
2	2 in			Liquidambar styraciflua 'Slender Silhouette'	Sweetgum slender silhouette
14				8 shade trees required/ provided per parking 1 per 12 spaces	
				existing southern border trees to remain	
18	5 gal			Syringa meyeri 'Palibin'	Dwarf Korean Lilac
8	3 gal			Juniperus conferta 'Blue Pacific'	Blue Pacific Juniper
26				(E)(C)(1) screening 1 shrub per 25ft. 25 required: provided	
3	5 gal			Hydrangea arborescens 'Incrediball'	Incrediball Hydrangea
3	5 gal			Hydrangea macrophylla 'Blushing Bride'	Blushing Bride Hydrangea
7	3 gal			Spiraea x bumalda 'Goldflame'	Goldflame Spirea
5	36 in			Viburnum x burkwoodii	Burkwood Viburnum
18	3 gal			Hydrangea quercifolia 'Pee Wee'	Pee Wee Hydrangea
46	2 gal			Rosa 'Fragrant Spreader'	Fragrant Spreader Rose
5	15 in			Buxus x 'Green Mountain'	Green Mountain Boxwood
5	24 in			Buxus x 'Green Mountain'	Green Mountain Boxwood
5	36 in			Buxus x 'Green Mountain'	Green Mountain Boxwood
8	18-24 in			Taxus x media 'Ward'	Ward's Anglojap Yew
2	18-24 in			Picea pungens 'Globosa'	Globosa Spruce
26	3 gal			Juniperus squamata 'Blue Star'	Blue Star Juniper
16	6'			Thuja occidentalis 'Emerald'	Emerald Green Arborvitae
149				(D)(7)(b) foundation planting required 60.2, provided	
88				88 beyond required	
3	2 in			Taxodium distichum	Bald Cypress
1	2 in			Nyssa sylvatica 'Wildfire'	Black Gum Wildfire
17	5 gal			Hydrangea paniculata 'Limelight'	Limelight Panicle Hydrangea
37	3 gal			Miscanthus sinensis 'Morning Light'	Morning Light Maiden Grass
101	3 gal			Panicum virgatum 'Shenandoah'	Shenandoah Switch Grass
155				138 ornamental grasses provided, to disturb the existing tree roots the least	
				(D)(4)existing southern border trees to remain	
groundcovers per code					
120	3 gal			Ilea virginica 'Little Henry'	Little Henry Ilea
338	PP			Sporobolus heterolepis	Prairie Dropseed
10	1 gal			Hosta 'August Moon'	August Moon Hosta
11	1 gal			Hosta 'Blue Angel'	Blue Angel Hosta
11	1 gal			Geranium 'Rozanne'	Rozanne Geranium
6	1 gal			Amsonia hubrechtii	Threadleaf Bluestar
17	1 gal			Nepeta faassonii 'Dropmore'	Catnip
62	1 gal			Liriope muscari 'Variegata'	Variegated Lily Turf
166	1 gal			Ajuga 'Chocolate Chip'	Chocolate Chip Ajuga
above and beyond code: to soften, enhance, create park experience and Dublin effect					
1	6'-7'			Acer palmatum 'Bloodgood'	Japanese Bloodgood Maple
19	6-7'			Thuja occidentalis 'Emerald'	Emerald Green Arborvitae
1	6-7'			Thuja plicata 'Grovepl'	Spring Grove Arborvitae
10	2 gal			Arundo donax 'Peppermint Stick'	'Peppermint Stick' Giant Reed
5	3 gal			Panicum virgatum 'Heavy Metal'	Heavy Metal Switch Grass
22	3 gal			Calamagrostis x acutiflora 'Avalanche'	Variegated Avalanche Feather Reed Grass
28	2 gal			Pennisetum orientale 'Karley Rose'	Karley Rose Fountain Grass
67	1 gal			Liatis spiccata 'Kobold'	Purple Gayfeather
150	EA			Giant Allium Bulb	
100	EA			Surprise Lily	
PLAN BY					
GAF					
Gayle A. Frazer					
Registered Landscape Architect					
7377 BRIDGEPOINT PASS CINCINNATI, OHIO 45248					
513-607-8096 GAF1LA@FUSE.NET					

Gayle A. Frazer
Registered Landscape Architect

REVISIONS

JUNE 14, 2017
AUGUST 14, 2017

SPECIFICATIONS AND PLANTING DETAILS

MARRIOTT HOTEL
LOT #4 UPPER METRO PLACE
CITY OF DUBLIN, FRANKLIN COUNTY, OHIO

SCALE:
DATE: JUNE 1, 2017
DRAWN: WCD
DESIGNED: SAD
CHECKED: RVP
XREF:
JOB NO.: 16061
STONEHENGE DUBLIN HOTEL

Page

L800



NOTE:
UNDERGROUND UTILITIES ARE PLOTTED FROM A COMPILATION OF AVAILABLE RECORD INFORMATION AND SURFACE INDICATIONS OF UNDERGROUND STRUCTURES AND MAY NOT BE INCLUSIVE. PRECISE LOCATIONS AND THE EXISTENCE OR NON EXISTENCE OF UNDERGROUND UTILITIES CANNOT BE VERIFIED. PLEASE NOTIFY THE OHIO UTILITY PROTECTION SERVICE AT 1-800-362-2764 BEFORE ANY PERIOD OF EXCAVATION OR CONSTRUCTION ACTIVITY.