




City of Dublin

Office of the City Manager

5200 Emerald Parkway • Dublin, OH 43017-1090

Phone: 614.410.4400 • Fax: 614.410.4490

Memo

To: Members of Dublin City Council
From: Dana L. McDaniel, City Manager 
Date: August 24, 2017
Initiated By: Vincent A. Papsidero, FAICP, Planning Director
Terry D. Foegler, Director of Strategic Initiatives
Jennifer M. Rauch, AICP, Planning Manager
Re: Resolution 64-17 - Grounds of Remembrance - Landscape Plan

Background

The process of creating new development sites and associated roadways for the CML Dublin Branch and Downtown Dublin Parking Garage have created the opportunity to establish a landscape buffer along the southern edge of the Grounds of Remembrance.

The City asked the Columbus landscape firm, MKSK, to prepare a landscape plan to address the opportunity provided by adding this new buffer to the Grounds, as well as to consider pedestrian access and wayfinding associated with the western entrance. The construction of the City garage also is providing improved access for veterans to the Grounds.

In undertaking this work, MKSK and City staff engaged a committee of Dublin veterans who met multiple times during the process to review concepts and provide feedback. MKSK and staff also engaged with the architect of the memorial to gain additional feedback. The committee held its final meeting on July 31st, at which the committee expressed its support for the recommendations embodied in the landscape plan.

The plan is included with this memorandum, as well as a background memorandum from MKSK that includes written comments provided by committee members. A presentation will be made at the August 28, 2017 City Council meeting to consider approving the plan by resolution. Committee members may be present to share their thoughts.

Recommendation

Staff recommends that City Council approve Resolution 64-17 to accept the landscape plan and authorize the City Manager to proceed with detailed design documents and construction, consistent with the approved CIP.

RECORD OF RESOLUTIONS

Dayton Legal Blank, Inc., Form No. 30045

Resolution No. **64-17** Passed _____, 20____

A RESOLUTION APPROVING THE LANDSCAPE PLAN RELATED TO THE GROUNDS OF REMEMBRANCE

WHEREAS, the City of Dublin has consistently recognized the importance of its veterans and their sacrifice to the United States of America; and

WHEREAS, the City commemorates this sacrifice through the Grounds of Remembrance as a sacred place for residents, veterans and their families to come together in remembrance; and

WHEREAS, the City is investing in public improvements in Historic Dublin, consistent with the 2010 Vision Plan, including reconstruction of North High Street and the construction of the first segment of Rock Cress Parkway; and

WHEREAS, the City is partnering with the Columbus Metropolitan Library in the construction of a new branch for Dublin and a City-owned parking garage on parcels directly south of the Grounds of Remembrance; and

WHEREAS, the City undertook a design study to create a planted buffer, enhanced pedestrian access and additional wayfinding to improve the land that surrounds the Grounds of Remembrance; and

WHEREAS, the City staff and its designer, MKSK, have met on multiple occasions with the Veterans Committee to discuss the project, review concepts and obtain their approval of the final recommendations on July 31, 2017.

NOW, THEREFORE, BE IT RESOLVED by the Council of the City of Dublin, _____
of its elected members concurring, that:

Section 1. The Landscape Plan and associated improvements related to the Grounds of Remembrance, dated August 28, 2017, are hereby approved.

Section 2. The City Manager is hereby authorized to commence the final design of the recommended improvements and construction of said improvements.

Section 3. This Resolution shall be effective upon passage in accordance with Section 4.04(a) of the Revised Charter.

Passed this _____ day of _____, 2017.

Mayor – Presiding Officer

ATTEST:

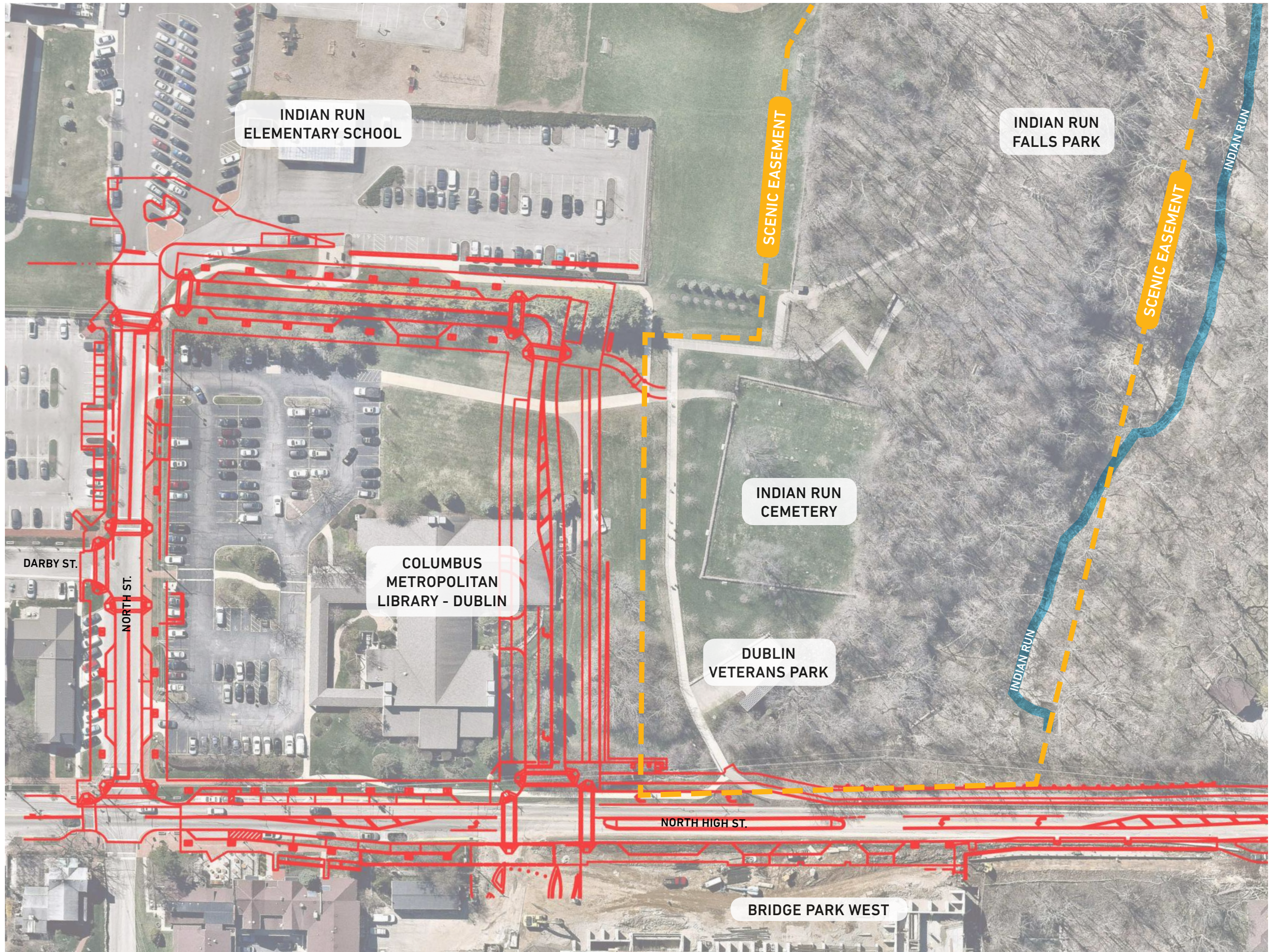
Clerk of Council

GROUNDS OF REMEMBRANCE

LANDSCAPE PLAN

AUGUST 28, 2017





BACKGROUND:

This landscape plan presents the proposed expansion of the Grounds of Remembrance, which is triggered by the creation of a buffer along the north side of the future Rock Cress Parkway between N. High Street and N. Franklin St. This opportunity enables the City to reimagine its relationship with the Grounds through creation of a landscaped buffer along its southern edge, thereby providing a buffer along Rock Cress Parkway while improving pedestrian access and wayfinding to the Grounds.





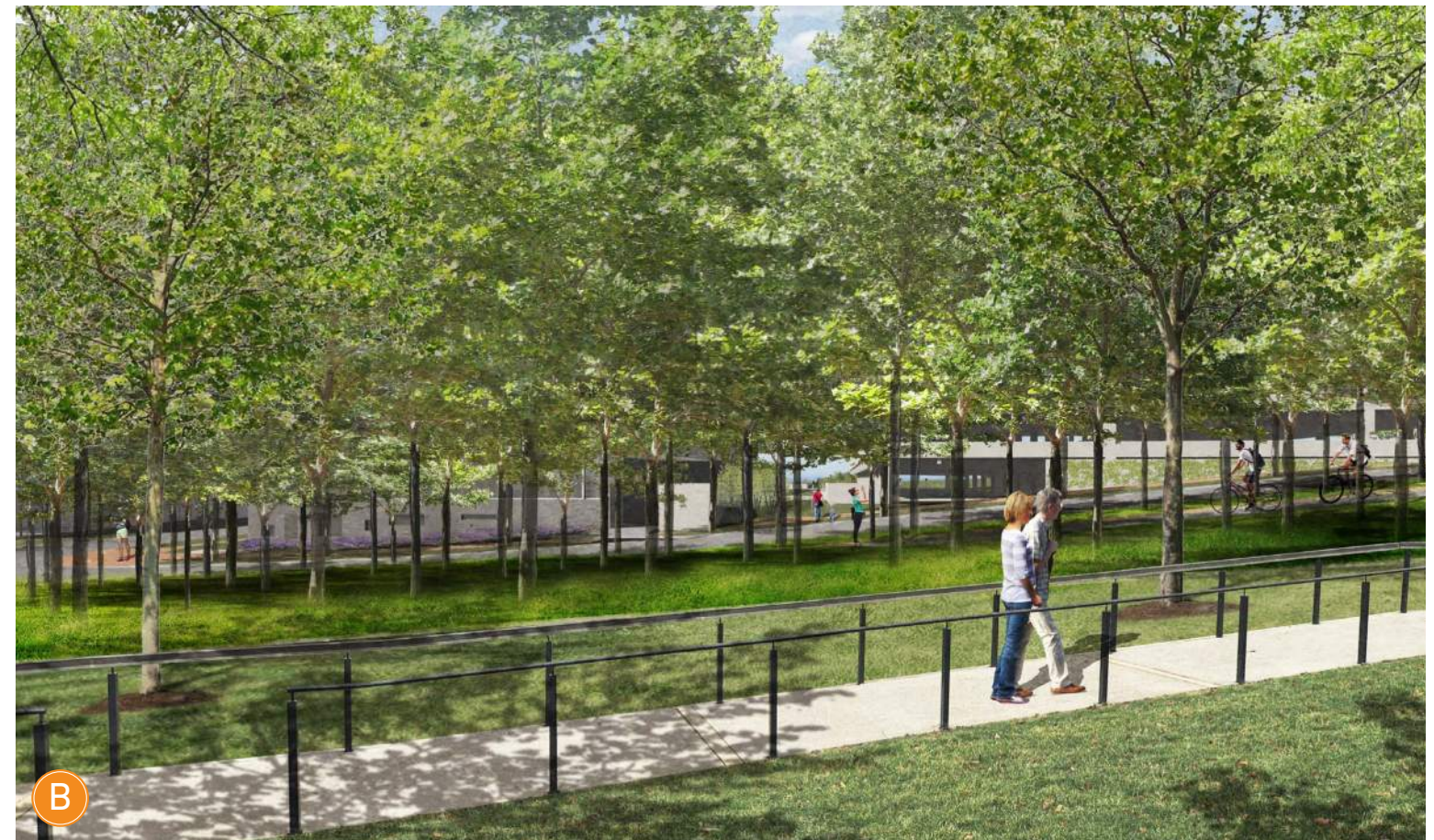
DESIGN INTENT:

The intent of the landscape plan update is to improve the experience for both individuals and groups without making any changes to the Grounds. The planning considerations that informed the process included the redevelopment of the Columbus Metropolitan Library's Dublin Branch, including the adjacent Downtown Dublin Parking Garage, and the new surrounding street network (High Street, Franklin Street, North Street and Rock Cress Parkway). Taken together, these improvements provide opportunities for enhanced parking arrangements for visitors to the Grounds (covered, accessible spaces connected by elevator to street level and Veterans Park entrance), improved visibility and presence of the memorial space, and separation from the activity along future Rock Cress Parkway.

To achieve this balance of creating an accessible, visible and welcoming public space while preserving a dignified memorial experience, a subtle landscape approach is proposed. This approach builds upon the intent of the original design of the Grounds of Remembrance as well as the idyllic qualities of the adjacent Indian Run Falls Park, to envelope the Grounds in a wooded buffer of shade trees and low meadow grasses. This wooded buffer provides a visual distinction between the memorial space and the surrounding public realm that allows for both a sense of quiet within the memorial and filtered views to the activity within from the public realm.

- 1_The Recognition Walk
- 2_Patron's Sycamore Grove
- 3_Indian Run Cemetary
- 4_The Loggia
- 5_The Dedication Wall
- 6_POW-MIA / KIA Memorial
- 7_The Memorial Wall
- 8_ Indian Run Park Entrance







DESIGN RECOMMENDATIONS:

- A limbed up deciduous tree planting with a random pattern to provide filtered views into and out from the Grounds of Remembrance so that it is separated and buffered from the noise and activity on the abutting streets without creating security or visibility issues.
- Signage at the south (Franklin Street) entry to welcome visitors from the south and the garage. Although the guide rail is the official threshold of the Grounds, the perception for visitors approaching from the parking garage will be that they have entered the Grounds once they are on the ramp.
- The difference in elevation between the intersection of Franklin Street and Rock Cress Parkway and the Grounds will require a ramp to provide access to the Grounds. The Americans with Disabilities Accessibility Guidelines require that handrails be provided on both sides of any ramp. The proposed rails are recommended to be neutral and separate from the Guide Rail to delineate a separation between the art in the Grounds and the access path to it. The plan recommends rails in any case to aid elderly or infirmed visitors to the park. The current alignment provides the most direct route from the accessible parking in the garage to the Grounds and minimizes conflicts with the cycle track. While it is possible to provide a path which is not a ramp, it requires a series of switchbacks which unnecessarily lengthen the route into the park and potentially detract from the original design.
- The entry to Indian Run Falls Park is recommended to be separated from the south entry to the Grounds and the cemetery and the existing trailhead kiosk. The plan recommends replacing the existing signage.
- A retaining wall along Rock Cress Parkway and High Street is recommended to mitigate the difference in elevation between the Grounds and the abutting streets. It is recommended that the wall relate to the style of masonry found throughout historic Dublin, which is rustic limestone rubble walls.

Dublin Grounds of Remembrance - Proposed Landscape Plan

Date: August 17, 2017

BACKGROUND:

This memorandum summarizes the proposed expansion of the Grounds of Remembrance, which is triggered by the creation of a buffer along the north side of the future Rock Cross Parkway between N. High Street and N. Franklin St. This opportunity enables the City to reimagine its relationship with the Grounds through creation of a landscaped buffer along its southern edge, thereby providing a buffer along Rock Cross Parkway while improving pedestrian access and wayfinding to the Grounds.

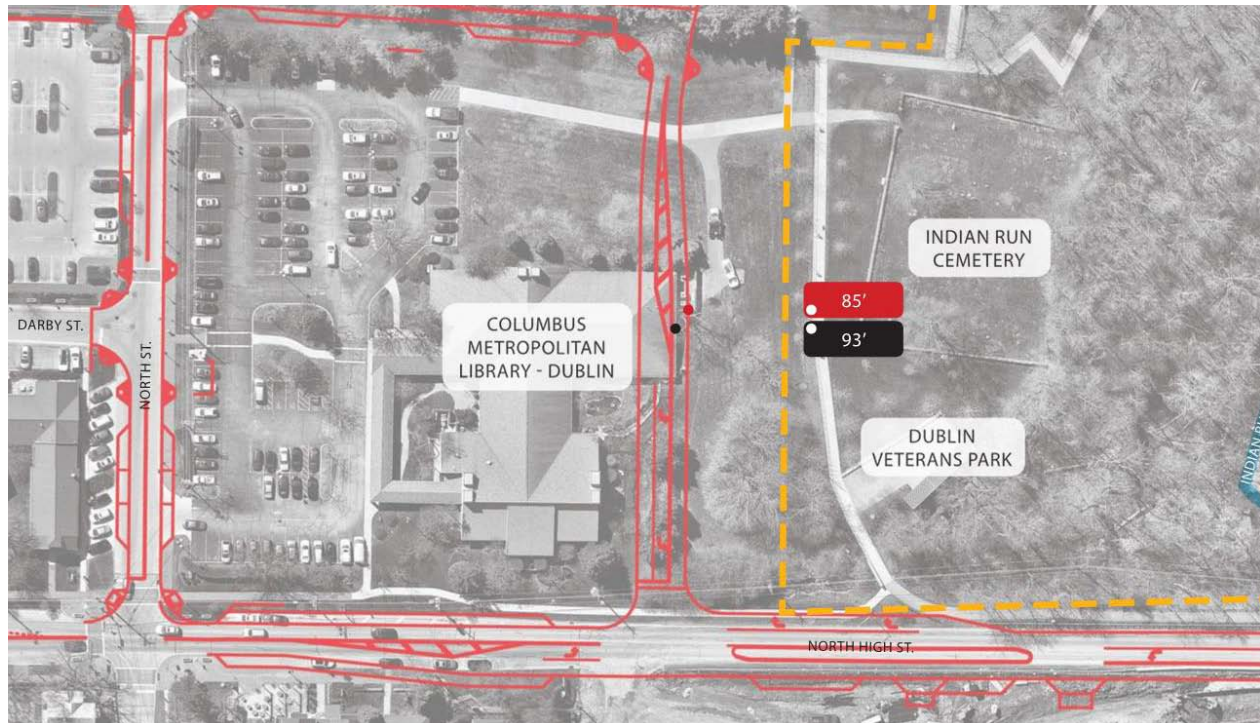


Figure 1

DESIGN INTENT:

The intent of the landscape plan update is to improve the experience for both individuals and groups without making any changes to the Grounds. The planning considerations that informed the process included the redevelopment of the Columbus Metropolitan Library's Dublin Branch, including the adjacent Downtown Dublin Parking Garage, and the new surrounding street network (High Street, Franklin Street, North Street and Rock Cross Parkway). Taken together, these improvements provide opportunities for enhanced parking arrangements for visitors to the Grounds (covered, accessible spaces connected by elevator to street level and Veterans Park entrance), improved visibility and presence of the memorial space, and separation from the activity along future Rock Cross Parkway.

To achieve this balance of creating an accessible, visible and welcoming public space while preserving a

Grounds of Remembrance - Proposed Landscape Plan (continued)

dignified memorial experience, a subtle landscape approach is proposed. This approach builds upon the intent of the original design of the Grounds of Remembrance as well as the idyllic qualities of the adjacent Indian Run Falls Park, to envelope the Grounds in a wooded buffer of shade trees and low meadow grasses. This wooded buffer provides a visual distinction between the memorial space and the surrounding public realm that allows for both a sense of quiet within the memorial and filtered views to the activity within from the public realm.



Figure 2 - Wooded Buffer of Shade Trees and Low Meadow Grasses

Memorial Landscape Buffer (Figures 3 & 4)

- Provide a mix of randomly spaced deciduous shade trees with low groundcover
- Create filtered views between the streetscape and the Grounds of Remembrance
- Reinforce the existing bounds of the Grounds of Remembrance while enhancing its presence in the public realm.

Grounds of Remembrance - Proposed Landscape Plan (continued)



Figure 3 - Memorial Landscape Buffer



Figure 4 - Memorial Landscape Buffer

Grounds of Remembrance - Proposed Landscape Plan (continued)

Architectural Features & Materials (Figures 5, 6 & 7)

- Battered stone retaining wall along Rock Cress & High Street to mitigate grade change
- Flush stone curb to delineate landscape buffer from Grounds of Remembrance
- Neutral handrail - distinct from Guide Rail in the Grounds
- Low stone wall with identification signage at Franklin entrance



Figure 5 - Architectural Features & Materials



Figure 6 - Architectural Features & Materials

Grounds of Remembrance - Proposed Landscape Plan (continued)



Figure 7 - Architectural Features & Materials

Parking, Accessibility & Circulation (Figures 8 & 9)

- Provide most direct accessible route from ADA parking in the second level of the garage to Grounds of Remembrance
- Furnish neutral handrail, separate & distinct from Guide Rail in the Grounds



Figure 8 - Accessible Route from Parking Garage

Grounds of Remembrance - Proposed Landscape Plan (continued)



Figure 9 - Accessible Route from Parking Garage

DESIGN RECOMMENDATIONS:

- A limbed up deciduous tree planting with a random pattern to provide filtered views into and out from the Grounds of Remembrance so that it is separated and buffered from the noise and activity on the abutting streets without creating security or visibility issues.
- Signage at the south (Franklin Street) entry to welcome visitors from the south and the garage. Although the guide rail is the official threshold of the Grounds, the perception for visitors approaching from the parking garage will be that they have entered the Grounds once they are on the ramp.
- The difference in elevation between the intersection of Franklin Street and Rock Cress Parkway and the Grounds will require a ramp to provide access to the Grounds. The Americans with Disabilities Accessibility Guidelines require that handrails be provided on both sides of any ramp. The proposed rails are recommended to be neutral and separate from the Guide Rail to delineate a separation between the art in the Grounds and the access path to it. The plan recommends rails in any case to aid elderly or infirmed visitors to the park. The current alignment provides the most direct route from the accessible parking in the garage to the Grounds and minimizes conflicts with the cycle track. While it is possible to provide a path which is not a ramp, it requires a series of switchbacks which unnecessarily lengthen the route into the park and potentially detract from the original design.
- The entry to Indian Run Falls Park is recommended to be separated from the south entry to the Grounds and the cemetery and the existing trailhead kiosk. The plan recommends replacing the existing signage.
- A retaining wall along Rock Cress Parkway and High Street is recommended to mitigate the difference in elevation between the Grounds and the abutting streets. It is recommended that the wall relate to the style of masonry found throughout historic Dublin, which is rustic limestone rubble walls.

Grounds of Remembrance - Proposed Landscape Plan (continued)**OUTREACH:**

The Grounds of Remembrance is a highly valued public space to the citizens of Dublin. Because of its significance within the community, staff and the design team reached out to the original advisory committee and artist to solicit input on the proposed design. The feedback received from the committee and the artist helped to inform the refinement of the design concept.

On January 26, 2017, staff and MKSK made an initial presentation to members of the original advisory committee. Members present at that meeting were:

Mike Kehoe, Mack Parkhill, Jeff Noble, Ken Klare, Alex Rozanski and Dana McDaniel.

Comments by the committee members on the proposed design included:

- *Consider including evergreen plants or trees in the landscape buffer for winter interest*
- *Maintain views from Rock Cress into the GOR for security reasons*
- *Additional signage at the Franklin Street entry and potentially on the wall at the intersection of Rock Cress Parkway and High Street is desirable*
- *Separating the entry walk into Indian Run Falls Park from the entry into the GOR is desirable*
- *ADA compliance at intersections and crosswalks is critical - include curb ramps*
- *Solicit feedback from the artist on the proposed landscape improvements*
- *Using trees with military significance (e.g. Oaks) in the landscape buffer is desirable*

On February 28, 2017, staff and MKSK made a second presentation to members of the original advisory committee. Members present at that meeting were:

Mike Kehoe, Mack Parkhill, Jeff Noble, Ken Klare, Alex Rozanski and Dana McDaniel.

Comments by the committee members on the proposed design included:

- *Deciduous plantings are preferred over evergreen for security reasons*
- *Concern was voiced about the maintenance of the tree lawn as proposed (with groundcover plantings to match the landscape buffer) was expressed in the context of damage from roadway salt in the winter*
- *Accent plantings are preferred only at the Franklin Street entry, not in the tree lawn*
- *Concern was voiced about mid-block crossings from the library across Rock Cress Parkway*
- *A sloped retaining wall along Rock Cress Parkway was preferred over a stepped wall*
- *One member requested a winter rendering of the landscape buffer*
- *MKSK is to solicit input from the artist on the proposed railing at Franklin, south of the Guide Rail - one member felt it detracted from the original design of the Guide Rail.*

On March 2, 2017, advisory committee member Ken Klare provided written feedback as summarized below - see 'EXHIBIT A' for full text. EXHIBIT A also includes subsequent correspondence from Mr. Klare received via email.

"I thought it helpful, for at least me, to summarize my points. Key among them being: favoring the separation of recreational path from the recognition/dedication walk (thus improving Indian Run Falls Park access), supporting the concept of embracing the grounds open space with a continuation of the riparian type vegetation - and

Grounds of Remembrance - Proposed Landscape Plan (continued)

using care if considering evergreens or screening. I further support creating a filtered (visibility) connection to the south, the enhancement of both entryways, and the necessity of an appropriate retaining wall (with further discussion regarding its design and interface). Among the elements I'm not on-board with are: the philosophy of an expanded Grounds of Remembrance, the added railings at the southern entrance (Franklin Street), and an unnecessary level of added signage."

On March 22, 2017 Curt Gettman and Matt Earman contacted the artist, Lisa Rapoport of PLANT Architecture.

Initial questions from the artist included:

- *What species of trees will the road be lined with?*
- *What do the 4 images of trees and flowers refer to in the plans?*
- *Is the rubblestone wall intended to mimic the cemetery wall?*

MKSK responded as follows:

"We have not selected specific tree species yet. The general concept is to wrap the look of the Indian Run woods around the Grounds of Remembrance by creating an idealized woodland buffer between the memorial and the new road with limbed up deciduous trees and low groundcover. The goal is to allow filtered views into and out from the grounds while still creating a sense of separation. The advisory committee has requested that trees with military significance, like oaks, be included in the design.

The images of trees and flowers are precedent images for the general look the buffer will have.

The walls are not intended to mimic the cemetery wall, although the intent is for the walls to reflect / complement the rubble masonry in historic Dublin. There is an ongoing discussion about the material and look of the retaining walls,. We have also had a request for the walls to complement the masonry on the new library which we are exploring."

On March 30, 2017 the artist provided written feedback as summarized below - see 'EXHIBIT B' for full text:

- *The Guide Rail should not be extended at all.*
- *In order to maintain both the integrity and singularity of the limestone walls and the original cemetery wall, no new stone walls should be added.*
- *Ms. Rapoport agreed with the approach to the planted buffer and recommended trees without interesting bark.*
- *Ms. Rapoport recommended that no additional signage be added which might imply that the limit of the park is at the edge of Rock Cress rather than where the turf begins. At most, a small sign indicating the GOR beyond would be acceptable.*

On April 19, 2017, MKSK facilitated a video conference call between staff and the artist, Lisa Rapoport, of PLANT Architecture. Feedback from the artist is summarized below:

- *Ms. Rapoport would prefer that the Guide Rail to be the limit of the GOR and no railing along the walk down from the Rock Cress / Franklin Intersection or signage at Rock Cress*
- *She would like the proposed flush curb to be the limit of the proposed handrail if possible*
- *She opposed the proposed retaining wall and requested that it be 'less wall-like' and covered with plantings or a very different material than the cemetery wall*

March 2, 2017

Darren & Chris—

Thanks for your work on Rock Cress Parkway and Dublin's Grounds of Remembrance. As you witnessed the diverse range of perspectives among just a few of the Veterans Committee, you might appreciate how the park project took three years. I don't envy you.

I thought it helpful, for at least me, to summarize my points. Key among them being: favoring the separation of recreational path from the recognition/dedication walk (thus improving Indian Run Falls Park access), supporting the concept of embracing the grounds open space with a continuation of the riparian type vegetation – and using care if considering evergreens or screening. I further support creating a filtered (visibility) connection to the south, the enhancement of both entryways, and the necessity of an appropriate retaining wall (with further discussion regarding its design and interface). Among the elements I'm not on-board with are: the philosophy of an expanded Grounds of Remembrance, the added railings at the southern entrance (Franklin Street), and an unnecessary level of added signage.

Grounds of Remembrance Memorial Park: Integrated and visibly open to the new “urban” environment? Secluded, quiet respite away from the hustle and bustle? Integrate or clearly define Memorial – hard versus soft edges? Maintain the existing design integrity or expand the “bounds”? Degree of necessity and appropriateness of signage? Is the Memorial extended out to the sidewalks along Rock Cress and High Street; or does the Memorial remain in tact and is simply encircled by a more developed setting? Does the southern access become equal to the main High Street entrance – and if so deserving of an equal treatment (signage, etc.)? Again, I do not consider the Memorial to be all inclusive of all the land northwest of the sidewalks along Rock Cress and High streets. This area is important, as is the ravine on the northern edge, and sets the stage, but for me, one physically enters the Memorial space at its current entrance spots – that's what gives the design strength and cohesiveness.

Additional signs: The corner sign is not necessary. With its close proximity to the existing sign it merely is a duplicate. Having filtered visibility to the loggia, flagpole, railing, and cemetery wall to entice further exploration is a better approach than having three or more signs, like it was a Starbucks or something. I prefer the park be considered a hidden treasure than to lining roadways with signs saying ‘here I am’. If there is a corner sign it should be understated and secondary (much like the one on the Memory Wall), not in competition with the existing main entrance sign (which could be enhanced with flowers or softer plantings). I also recommend subtlety with the Franklin Street entrance sign. (Note today we have an at grade sign not a big signpost.) Note this entrance also serves the historic cemetery; consequently it isn't all about the Veterans Park – hence the surface sign.

ADA railings at south entrance: I do not favor adding these railings. I fear it will diminish the strength and cohesiveness of the existing railing...and its alignment – one of the key elements of the Memorial's design. The two-sided railing on a curvilinear path as presented appears like a loose appendage with no purpose – an add-on. It neither fits nor is contrastingly complimentary. I'm not convinced about the grade argument, but there must be a better way – one that doesn't use railings.

I've included a rough sketch showing a switchback and steps (with Sycamores) that makes a stronger entry, but in my mind, doesn't compete with the Memorial. Perhaps this provides a setting for seating, bike racks, flowers, a flag, or even a more traditional bronze Revolutionary soldier sculpture (five are buried in the cemetery).

I used alignments cues from both the Memorial alignments and the cemetery walls; but maybe an entrance/approach plaza might also respond to a straightforward axial layout with the cemetery entrance and the Memorial railing break.

Retaining wall: I'm okay with the rigid alignment paralleling the roadways, its setback, being singular and monolithic versus a series of walls, and having a more "manmade" nature than natural. Minimize wall by keeping it low with some topo in-front of and behind the wall and having the ends die-out into the grade. A non-stepped wall height would be visually simpler. A wall with a simple flush top and a thickness of about 18" is preferred over a finished top of a cut limestone cap.

Should the appearance mimic the "Dublin" wall of dry-laid rough stones or be contrastingly different? It should not be a utilitarian concrete retaining structure. At this time I favor a more natural "Dublin" wall feel than a slick contemporary material and use. It might be larger blocks of limestone. Perhaps the old and new merge using a laid up stone (old) with a staggered-back cant form (new). Your initial battered intersecting walls at the corner, which I thought would compliment the library's forms and thus make a comfortable transition across Rock Cress, intrigued me. That wall exploits the opportunity to add a dash of contemporary via its form. It could also do so with material or color; perhaps using the same material as the library's prow.

The location and juxtaposition of the retaining wall with the existing High Street entrance sign wall is important. Instead of merely angling the wall back, could you consider two separate paralleling walls? The one closest the road stopping about thirty feet shy of the sign, with the other wall setting about five feet behind the first and stopping short of connecting to the sign wall (about a foot). Hopefully this tiered area would offer an enhanced planting opportunity as a foreground to the sign wall; however, one not too sanitized.

I prefer the High Street wall align with the existing R.O.W. line instead of High Street's centerline or curb alignment. The right-of-way line appears to align four-degrees west of High Street.

Rock Cress & High intersection pavement: The shape of the brick quarter round and the connection of the asphalt bike path appears disconnected and disturbing – without relation. Not sure how the retaining wall will interface, but this whole intersection treatment needs to be more cohesive. It might make sense for the asphalt path along High to be continuous up along Rock Cress.

I support the retaining wall setback and prefer both sides meet at a corner versus angling the wall at this point.

Intersection curbing/ramps: I favor a continuous dropped curb/ramp versus two separate engineered ADA ramps. Whether ramp or dropped curb, use the same material – brick as in the walkway and street intersection.

Evergreen trees: More important to define the space of the Memorial; which can be done with the density and height of the deciduous plantings – even in winter. However, the Loggia could be buffered from High Street and provided a nice backdrop with the addition of a with a low vegetation screening (not necessarily evergreens). Not sure if the ground cover is evergreen and of all one material; but perhaps a variety in material and height could add winter interest just as a mix of tree species and heights would do.

Curb strip ground cover: I prefer your approach versus incorporating another element such as grass along the curb. Hard edge, straight, mow curb is okay along the Memorial open space.

Mid-block pedestrian abuse: Don't see it as a big issue. Address when need be. Consider a discouraging treatment within the grass strip on the south side of Rock Cress at the library's esplanade area.

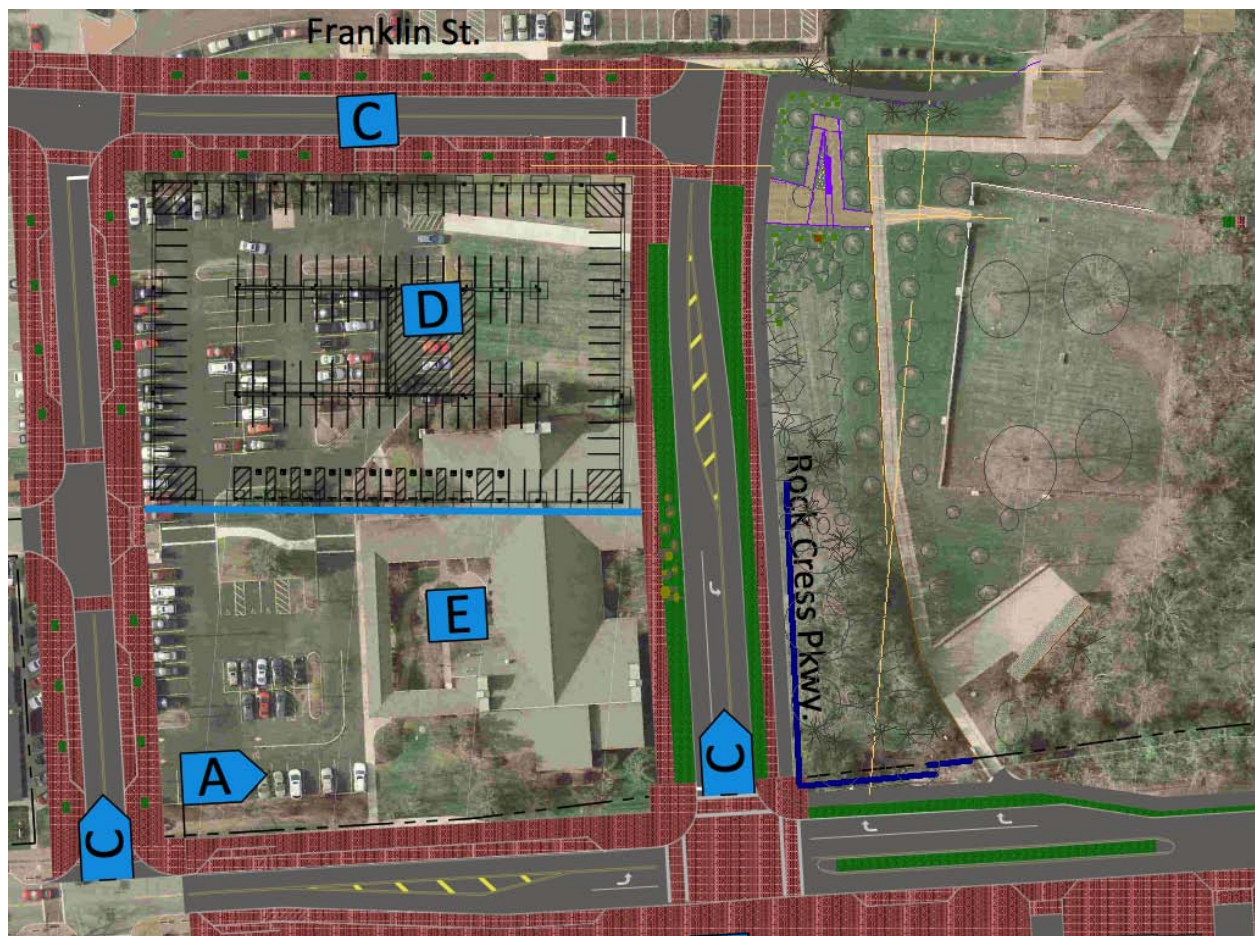
Indian Run Falls Park entrance: I like the separation from the Grounds of Remembrance. Enhance the entry at the terminus of Franklin Street and how the path penetrates the wooded area.

Western break in Memorial handrail: Close or not to close?

Vehicular access to the Memorial and cemetery: Unfortunately, vehicular access is needed for maintenance and set-up.

Again, thanks for the opportunity for input.

--ken klare



March 6, 2017

Hi Chris—

Had a few more questions I was hoping you might be able to answer for me.

1. What is the grade change from the sidewalk to the Memorial entrance? Currently it appears level at this location.
2. What ramp length is needed to avoid use of rails?
3. Could the ADA access be accommodated via the Indian Run Falls Park path and the western break in the Memorial rail?
4. What is the separation distance between the Memorial rail and the beginning of your rails with the proposed curved path design?
5. Do rails need to be on both sides of the path or could there be one center rail?
6. What surface material are you thinking for the path?
7. Where would a sign for the Indian Run Falls Park be placed?

Thanks.

--ken

March 7, 2017

Thanks Chris.

Had a few more questions/comments.

1. On your proposed sketch with the curved path, it appears the grades would be under the 5%. Then why are double-sided railings needed and shown? This design is simple and direct, but I fear these extra railings outside the Memorials' bounds may lessen the impact of the Memorial's handrail.
2. As I said earlier, I prefer any signage be subtle. I'm envisioning what you are showing to be a low (less than 24 inches) cut limestone wall slightly setback and aligned with the Memorial rail instead of Rock Cress's curb... possible?
3. It is not imperative to me for the entry to align with the crosswalk, so shifting it slightly to the east may offer other alternatives.
4. The bike path makes a jog at the brick plaza area. Wouldn't having the western leg aligning with the eastern path, especially if the path's back-edge aligned with the centerline of Rock Cress, offer more visual continuity? Seems there would be plenty of space heading west to gently bring the path closer to the curb - if that is what's desired. Unfortunately changes occurred with Maya Lin's National Vietnam Memorial Wall, including a chain railing. There was a call for a more traditional representation and "The Three Servicemen" statue and the Vietnam Women's Memorial were added nearby - but careful not to detract from the wall, but to augment the experience. Not sure how applicable this is to our situation, but I do see this renewed focus on the southern entrance and the proposed wooded strip along Rock Cress to potentially accommodate perhaps more traditional features. One might even consider an arrangement of five small flags at this node at the terminus of Franklin Street.

Yes, I concur a new kiosk and sign is needed for Indian Run Falls Park. Maybe this is also considered at this Franklin Street terminus.

--ken

March 21, 2017

Hello--

Saw this image of the slanted stone wall proposed in the Riverside Park. Might this not be a good choice for the wall along Rock Cress and High? Seems like it would make a nice continuity by being used at both ends of the pedestrian bridge. I really like this look of the battered wall with no cap.

--ken klare



PLANT ARCHITECT INC.

March 30, 2017

Parks & Recreation

6555 Shier Rings Road
Dublin, Ohio 43016

Attn: **CURT GETTMAN**, PUBLIC ART SPECIALIST
Re: New Road at Dublin Grounds of Remembrance

Dear Curt,

Thank you for forwarding me the proposed designs for the new Rock Cress Parkway. We welcome the opportunity to review the proposal, and would like to continue to review the revisions as the project progresses.

Although we appreciate that a new road will provide better profile and access to the Grounds of Remembrance, we have serious concerns with the detailing of the project as proposed. It is critical that no new elements be added to extend existing elements of the Grounds of Remembrance and thereby cause any confusion over what is part of the artwork of the park, versus what is part of the new streetscape. The park is not just a series of elements arranged along the experience of the walk, but the overall shape and limits are also a key part of the artwork by defining THE GROUNDS – therefore, creating any ambiguity about the shape of the park would also compromise the artwork. Based on the above, we have the following comments:

- Perspective E - The Guide Rail should not be extended at all. The existing guiderail is an art form that stands on its own as a form that frames and mirrors the cemetery and ravine, and the experience between. Any extension compromises the artform. It would be best to have no railing, but, if one is required due to barrier free needs (and only if absolutely necessary), it would be best to use the simple black railing that is used on the ramp part of the memorial – this was deliberately used as a “neutral” railing for the same reason, and is distinguished from the Guide Rail.
- Perspective C+stone wall images + elevations - In order to maintain both the integrity and singularity of the limestone walls and the original cemetery wall, no new stone walls should be added. The artwork deliberately uses the smooth limestone and very controlled rugged limestone as a foil to the cemetery wall – so that the cemetery wall would maintain its historic visual prominence. As per the images in the ppt, any new stone walls would either be mimicking the cemetery wall (which goes against the intention of the artpiece), mimicking the artwork (which as per above does not work), or if it is another kind of limestone wall, would be adding a distraction from the 3 kinds of walls in the Grounds. We understand that you need to make a height transition – making a sloped landscape that did not use any walls would be ideal. Or a

SUITE 208 • 101 SPADINA AVENUE TORONTO ONTARIO M5V 2K2 CANADA 1-416-979-2012 WWW.BRANCHPLANT.COM

PLANT ARCHITECT INC.

long wood bench on top of a short concrete wall or something that really is about the streetscape, and not mimicking the grounds, and really distinguished from the elements of the Grounds.

- In perspective A+B – we agree with the tactic of distinguishing the Grounds with the new with ground covers (flowering) as opposed to grass, the flush limestone curb, and the 'random' alignments of the trees to distinguish from the grid of the sycamores. It is not clear what species is being planned but the sycamores were selected for their fantastic bark, light color and presence in the ravine. It would be good if the new trees were a darker leafed mix as a backdrop, with little or no emphasis on interesting bark.
- Perspective C+D+F+G- The park starts at the edge of the grass and– as per above, not at the edge of this new street, so it is not appropriate to put signage here that is mimicking the limestone entry wall at the Grounds. That wall is there to anchor the beginning of the Guide Rail experience from the street. It is not just a sign, but the beginning of the journey. It may be appropriate to have another kind of signage that directs that the Grounds are beyond – something small and bronze? We could sketch something for that if you need.

I hope this is helpful. I look forward to the next round of the proposal. If you have any questions, please don't hesitate to contact me.

Sincerely yours,



Lisa Rapoport
PLANT Architect Inc.