



URBAN AIR ADVENTURE PARK

CITY OF DUBLIN
WEST INNOVATION DISTRICT
DEVELOPMENT PLAN REVIEW

15 SEPTEMBER 2017



PHASE 1 / BUILDING 1

ANTICIPATED CONSTRUCTION PERIOD: FALL 2017 TO SPRING 2018

PHASE 2 / BUILDING 2

ANTICIPATED CONSTRUCTION START: 6-9 MONTHS AFTER PHASE 1 COMPLETION

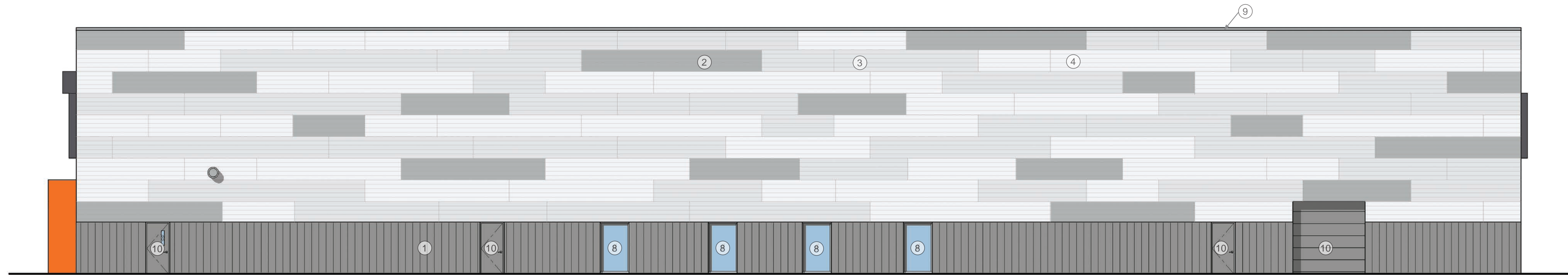


URBAN AIR ADVENTURE PARK - DUBLIN, OHIO
OVERALL FRONT ELEVATION AND PLAN

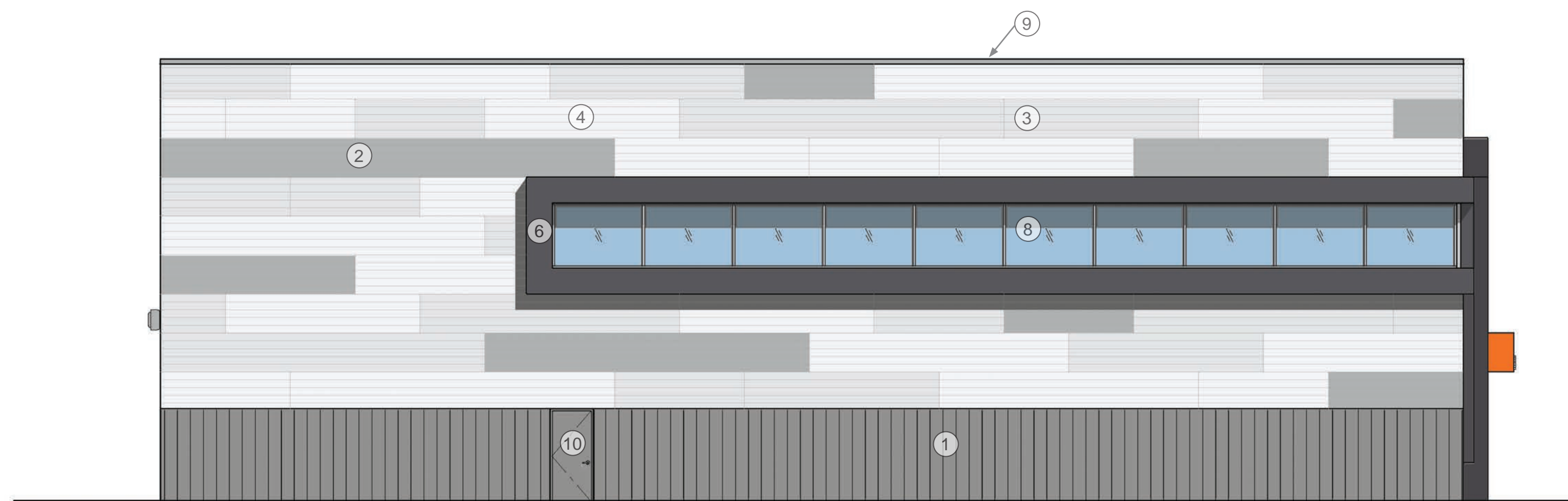
ma architects

2016.223
09.15.2017
page 2

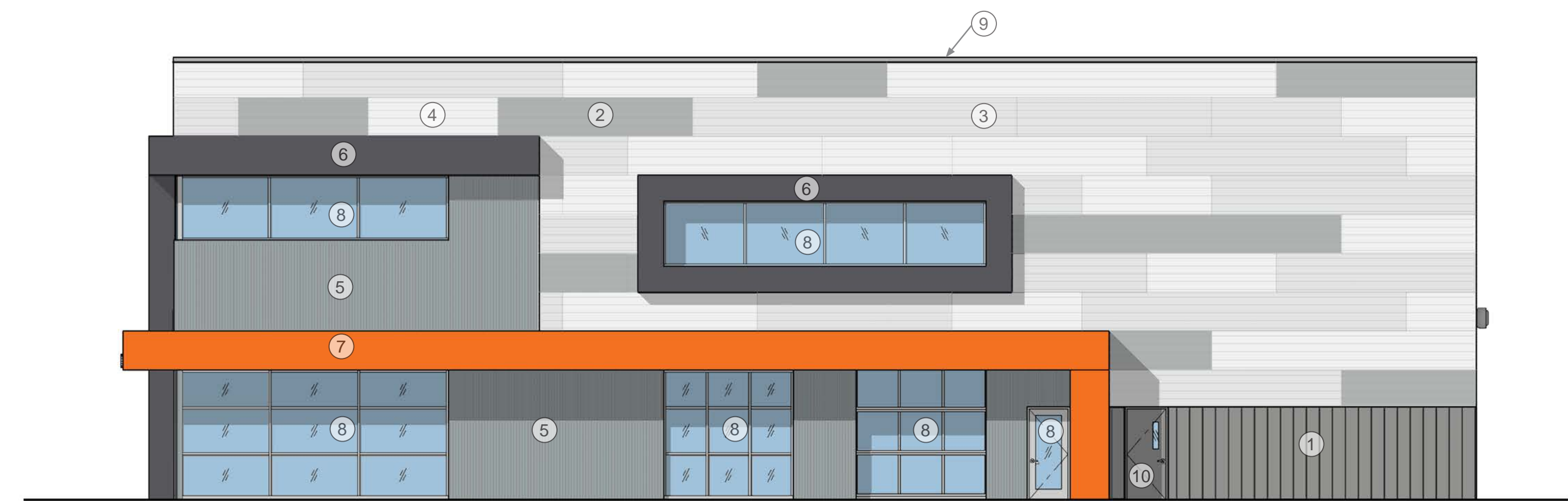
- ① prefinished metal panel | 12" flush panel | color: slate gray
- ② prefinished metal panel | 7.2 panel | color: cityscape
- ③ prefinished metal panel | 7.2 panel | color: stone white
- ④ prefinished metal panel | 7.2 panel | color: bone white
- ⑤ prefinished metal panel | 7/8" corrugated | color: silver
- ⑥ prefinished metal panel | smooth finish | color: charcoal
- ⑦ prefinished metal panel | smooth finish | color: "Urban Air Orange"
- ⑧ aluminum storefronts and doors | color: clear anodized
- ⑨ prefinished metal coping | color: cityscape
- ⑩ painted metal | color: slate gray



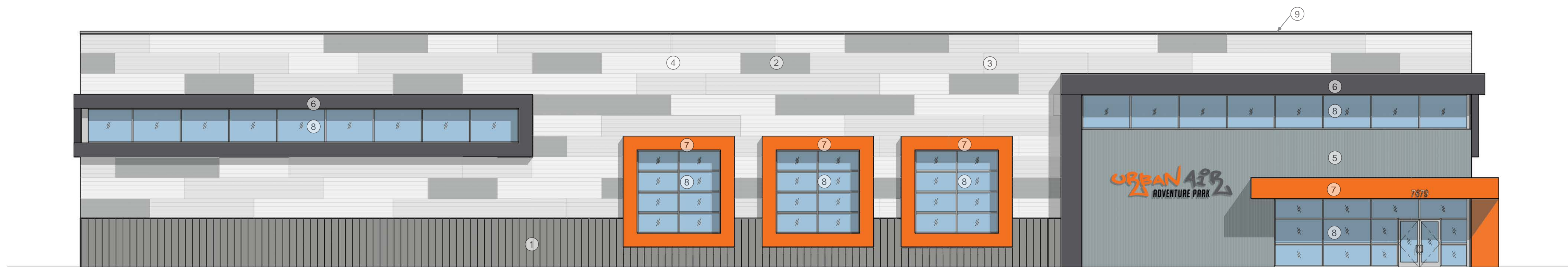
south (rear) elevation
scale: 1/8"=1'-0"



east (side) elevation
scale: 1/8"=1'-0"



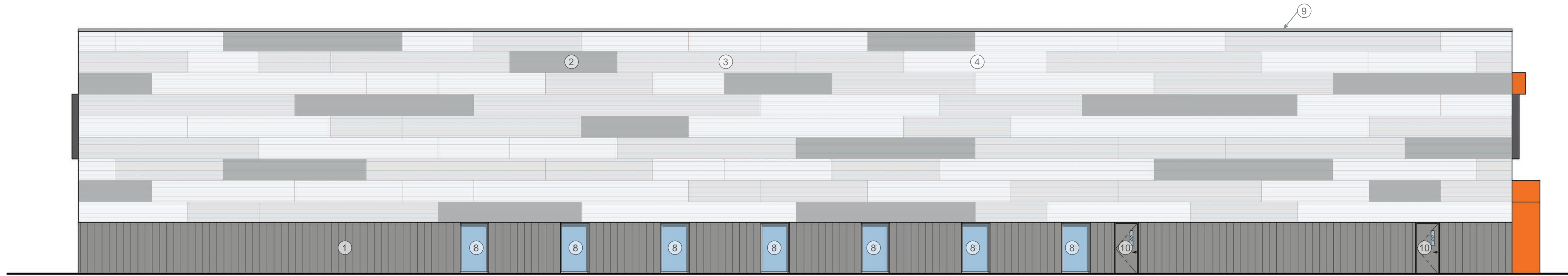
west (courtyard) elevation
scale: 1/8"=1'-0"



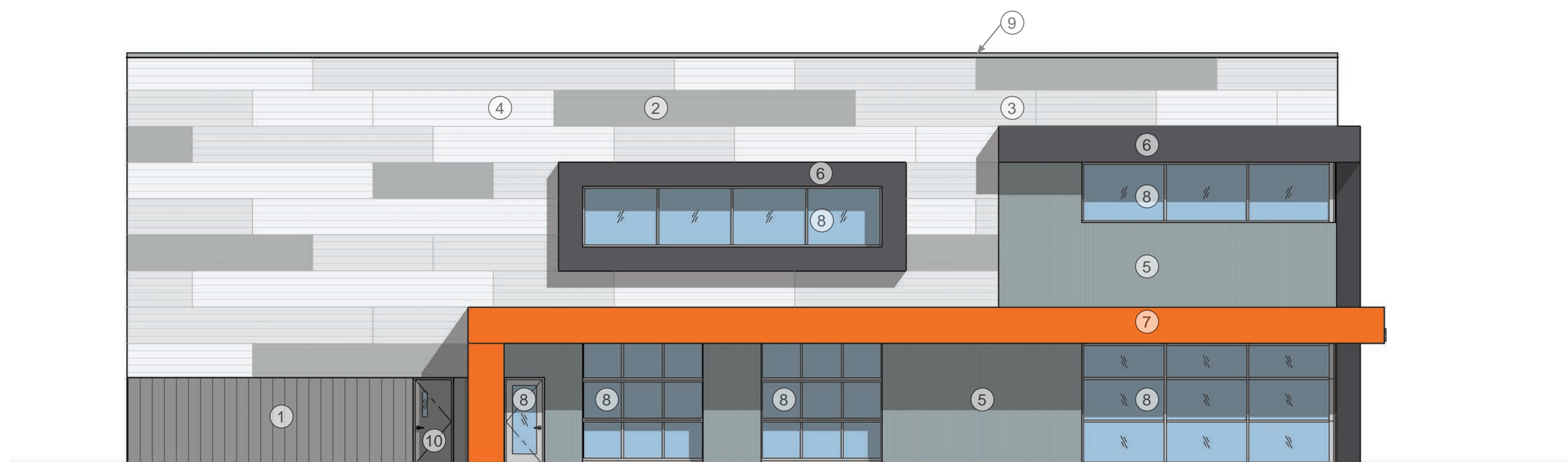
north (front) elevation
scale: 1/8"=1'-0"



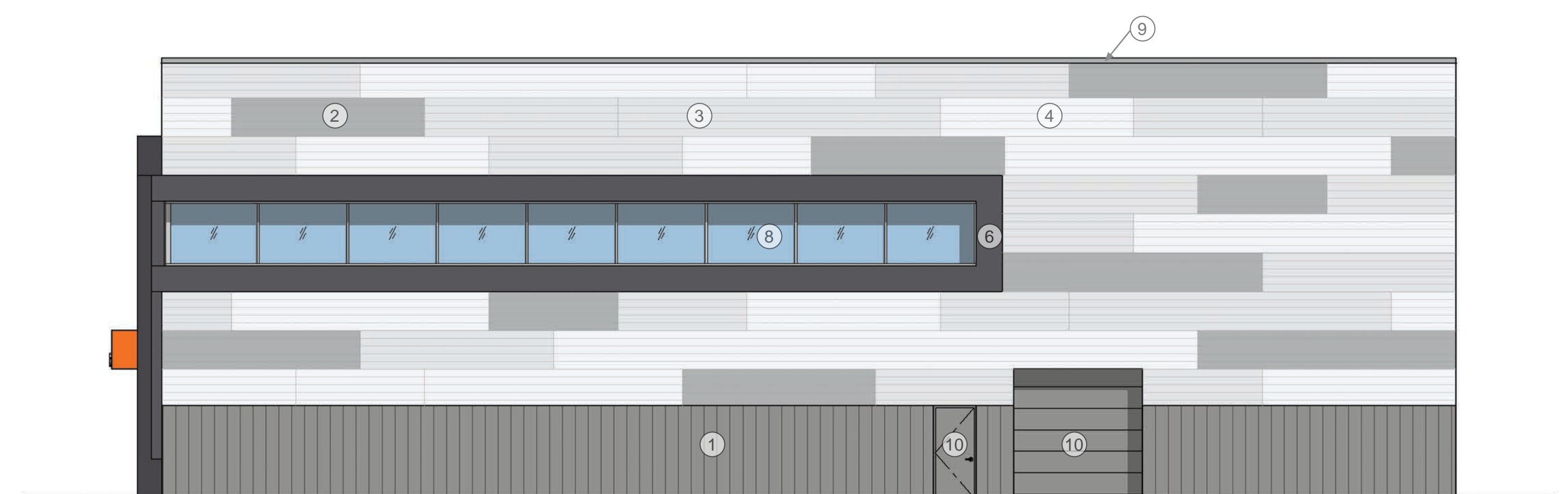
- ① prefinished metal panel | 12" flush panel | color: slate gray
- ② prefinished metal panel | 7.2 panel | color: cityscape
- ③ prefinished metal panel | 7.2 panel | color: stone white
- ④ prefinished metal panel | 7.2 panel | color: bone white
- ⑤ prefinished metal panel | 7/8" corrugated | color: silver
- ⑥ prefinished metal panel | smooth finish | color: charcoal
- ⑦ prefinished metal panel | smooth finish | color: "Urban Air Orange"
- ⑧ aluminum storefronts and doors | color: clear anodized
- ⑨ prefinished metal coping | color: cityscape
- ⑩ painted metal | color: slate gray



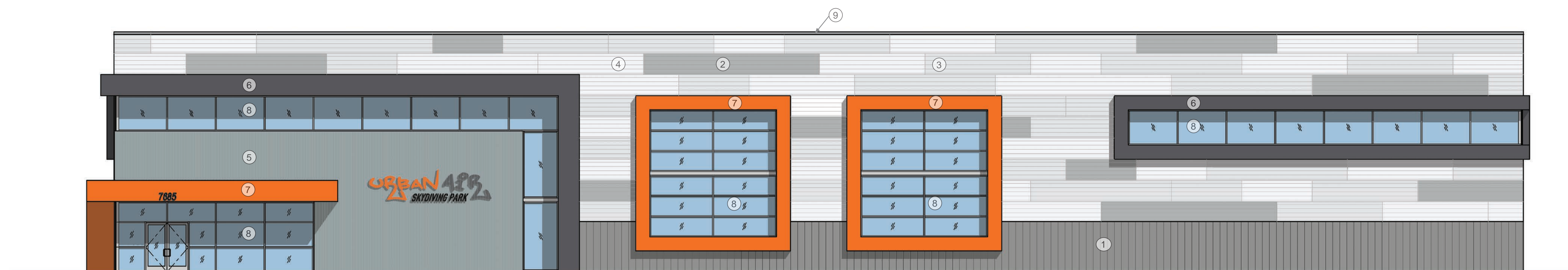
south (rear) elevation
scale: 1/8"=1'-0"



east (courtyard) elevation
scale: 1/8"=1'-0"



west (side) elevation
scale: 1/8"=1'-0"



north (front) elevation
scale: 1/8"=1'-0"



URBAN AIR ADVENTURE PARK - DUBLIN, OHIO

BUILDING 2 ELEVATIONS

① prefinished metal panel | 12” flush panel

FLUSH/REVEAL WALL PANELS

MATERIALS

.032 aluminum 24 gauge steel

.040 aluminum* 22 gauge steel*

SPECS

7", 11" or **12" O.C.** 1" High

Additional widths available upon request

FLUSH PANEL

FLUSH PANEL

REVEAL PANEL

REVEAL PANEL

PRODUCT FEATURES

- ▶ Corrective leveled for superior flatness
- ▶ Available with up to two stiffener beads
- ▶ Rounded interlock leg provides improved flush fit
- ▶ 30-year non-prorated finish warranty
- ▶ Panel lengths up to 25'

MATERIAL

- ▶ 38 stocked colors (24 gauge steel)
- ▶ 15 stocked colors (22 gauge steel)
- ▶ 36 stocked colors (.032 aluminum)
- ▶ 20 stocked colors (.040 aluminum)
- ▶ Galvalume Plus available

ASTM TESTS

- ▶ ASTM E330 tested - 12" only

FLORIDA BUILDING PRODUCT APPROVALS

Please refer to pac-clad.com or your local factory for specific product approval numbers for Flush panels.

*Limited color availability. 12" O.C. has reduced fastening flange. A complete specification is available online at pac-clad.com.

800 PAC CLAD | PAC-CLAD.COM ©2015-2016 Petersen Aluminum Corporation

① color: slate gray



flush panel examples



②③④ prefinished metal panel | 7.2 panel

7.2 PANEL

PRODUCT FEATURES

- ▶ 30-year non-prorated finish warranty
- ▶ Matching screws and rivets
- ▶ Closure strips available
- ▶ Precut short lengths (5'-0" minimum) (2'-0" on the M-42 and R-41)
- ▶ Panel lengths up to 38'

MATERIAL

- ▶ 38 stocked colors (24 gauge steel)
- ▶ 15 stocked colors (22 gauge steel)
- ▶ 36 stocked colors (.032 aluminum)
- ▶ 20 stocked colors (.040 aluminum)
- ▶ 29 stocked colors (.050 aluminum)
- ▶ Galvalume Plus available

FLORIDA BUILDING PRODUCT APPROVALS

Please refer to pac-clad.com or your local factory for specific product approval numbers for exposed fastener panels.

AVAILABILITY

M-42 and R-41 are only available in 24 ga. steel and .032 aluminum.

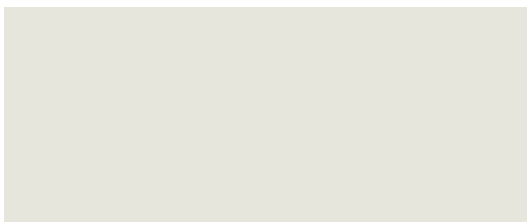
*Note: The M-36, M-42 and the R-41 Panels are not intended for use in the construction of metal buildings or structural roof applications. Please consult with Petersen Aluminum regarding the application of this panel. A complete specification is available online at pac-clad.com.

800 PAC CLAD | PAC-CLAD.COM ©2015-2016 Petersen Aluminum Corporation

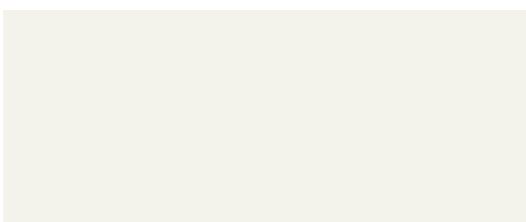
② color: cityscape



③ color: stone white



④ color: bone white



7.2 panel example



⑤ prefinished metal panel | 7/8” corrugated

1/2" & 7/8" CORRUGATED PANEL

7/8" CORRUGATED

1/2" CORRUGATED

PRODUCT FEATURES

- ▶ 30-year non-prorated finish warranty
- ▶ Matching screws and rivets
- ▶ Closure strips available
- ▶ Precut short lengths (5'-0" minimum) (2'-0" on the M-42 and R-41)
- ▶ Panel lengths up to 38'

MATERIAL

- ▶ 38 stocked colors (24 gauge steel)
- ▶ 15 stocked colors (22 gauge steel)
- ▶ 36 stocked colors (.032 aluminum)
- ▶ 20 stocked colors (.040 aluminum)
- ▶ 29 stocked colors (.050 aluminum)
- ▶ Galvalume Plus available

FLORIDA BUILDING PRODUCT APPROVALS

Please refer to pac-clad.com or your local factory for specific product approval numbers for exposed fastener panels.

AVAILABILITY

M-42 and R-41 are only available in 24 ga. steel and .032 aluminum.

*Note: The M-36, M-42 and the R-41 Panels are not intended for use in the construction of metal buildings or structural roof applications. Please consult with Petersen Aluminum regarding the application of this panel. A complete specification is available online at pac-clad.com.

800 PAC CLAD | PAC-CLAD.COM ©2015-2016 Petersen Aluminum Corporation

⑤ color: silver



flush panel examples



⑥⑦ prefinished metal panel | smooth finish

OMEGA-LITE®

When you're looking for a highly decorative yet durable solution for exterior wall surfaces, choose Omega-Lite ACM panels—they will not rot, swell, corrode, or delaminate. Best of all, with our installation systems they make total installed costs extremely competitive.

- Composed of a polypropylene corrugated core between two finished aluminum sheets
- Non-absorbent, water-resistant, and easy to maintain
- Custom color panels and caulks available to meet any corporate need
- Class A fire rating and NFPA 285 approved for various installation systems
- Towering, freeform, and curved structures are possible with the combination of Omega-Lite and Omega-Flex™ panels which provide the ability to wrap a 10' to 17' radius

Panels feature a corrugated polypropylene core for the highest strength-to-weight ratio of any competitive ACM panel. Painted aluminum sheets cover a black, plastic, water-resistant core.

Typical Applications

- Corporate ID Projects
- Sunrooms
- Storefronts
- Balcony Railings
- Soffits
- Canopies
- Spandrels
- Fascias
- Opaque Glazing
- In-Fill Panels
- Equipment Enclosures
- Clean Rooms

Top-side horizontal applications are not recommended.

Unlike other ACM manufacturers, Laminators Incorporated offers five engineered and tested systems using our Omega-Lite ACM panels. Our proprietary systems can easily be combined with other systems, masonry and glass for instance, to provide a variety of design options. Refer to pages 10-12 for more information.

⑥ color: charcoal

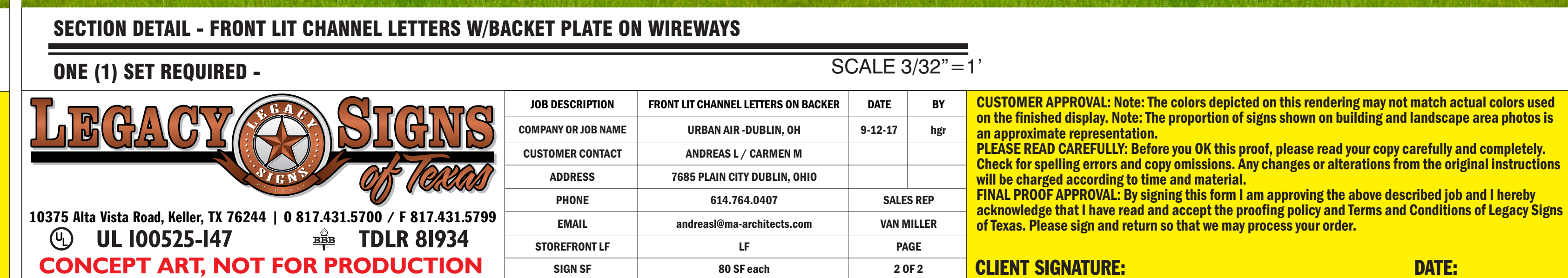
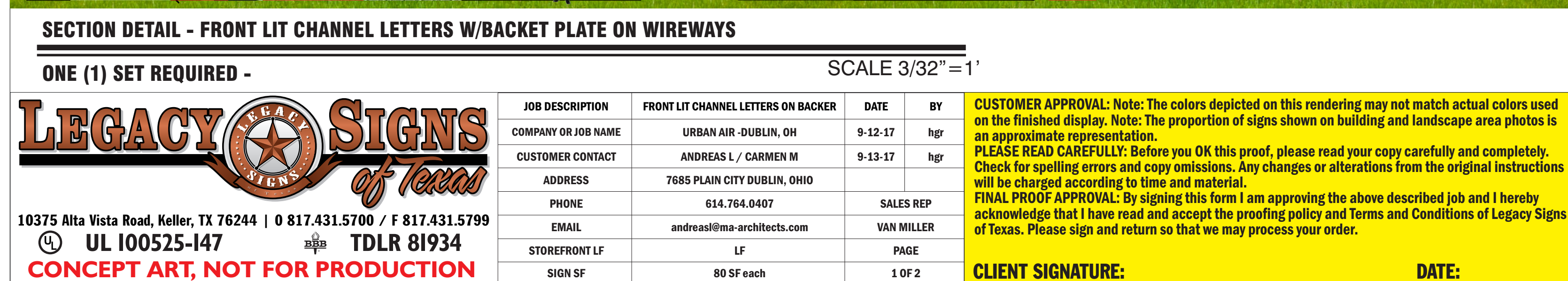


⑦ color: Urban Air Orange



smooth panel examples





BUILDING 2

PROPOSED SIGNAGE