

MASTER SIGN PLAN RESUBMISSION **APRIL 30, 2018**

---

# COLUMBUS METROPOLITAN LIBRARY - DUBLIN BRANCH LIBRARY AND CITY OF DUBLIN PARKING GARAGE

75 N HIGH STREET DUBLIN, OHIO 43017

## **SUBMISSION INDEX**

CML DUBLIN BRANCH LIBRARY PERMANENT SIGNAGE

CONSTRUCTION FENCE SIGNAGE

CITY OF DUBLIN PARKING GARAGE PERMANENT SIGNAGE

# CML DUBLIN LIBRARY PERMANENT SIGNAGE

## CODE SUMMARY - CML DUBLIN BRANCH LIBRARY

### PERMANENT SIGNAGE

#### GROUND SIGNAGE

ALLOWABLE NUMBER: 1 PER BUILDING OR PER PARCEL, PER STREET FRONTAGE, NOT TO EXCEED 2

ALLOWABLE SIZE: 8 SQ FT., MINIMUM SETBACK FROM PROPERTY 8'

PROPOSED: (1) GROUND MOUNTED SIGN, 16' SF ON MASONRY BASE TO MATCH BUILDING. SETBACK FROM PROPERTY 8'.

#### WAIVERS REQUIRED

DIFFERENT BUILDING TYPE, CODE ALLOWS FOR GROUND SIGNS IN HISTORIC COTTAGE COMMERCIAL BUILDING ONLY

EXCEEDING MAXIMUM ALLOWABLE AREA

EXCEEDING ALLOWABLE NUMBER OF COLORS. THREE COLORS ARE PERMITTED, CURRENTLY PROPOSED SIX COLORS.

### DOOR SIGNAGE

ALLOWABLE: 20% OF SURFACE AREA OF WINDOW, NOT TO EXCEED 8 SF.

PROPOSED: 3.08 SF OR 2.75% OF OVERALL DOOR. DOOR IS 112 SF.

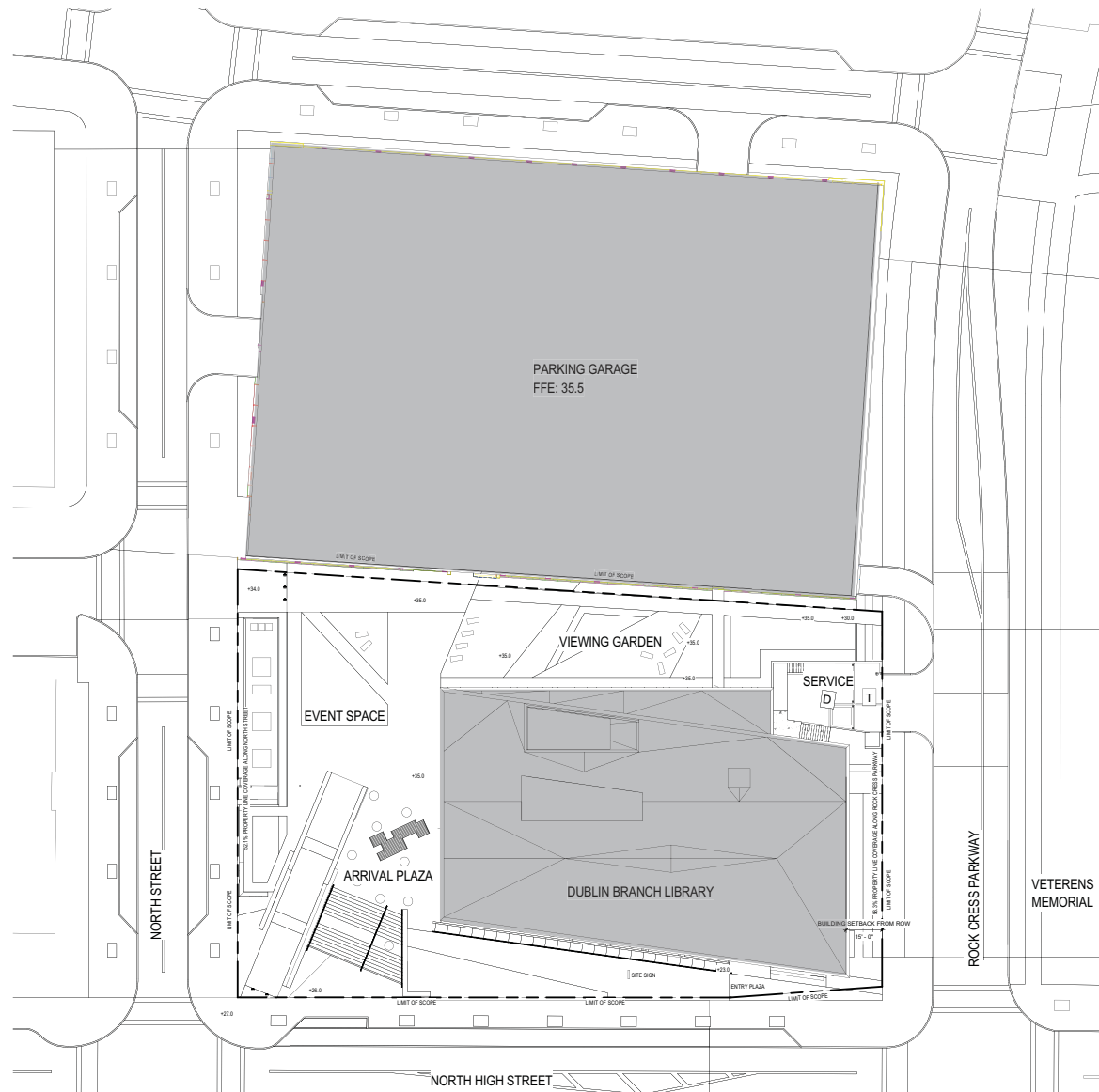
#### WAIVERS REQUIRED

NONE.

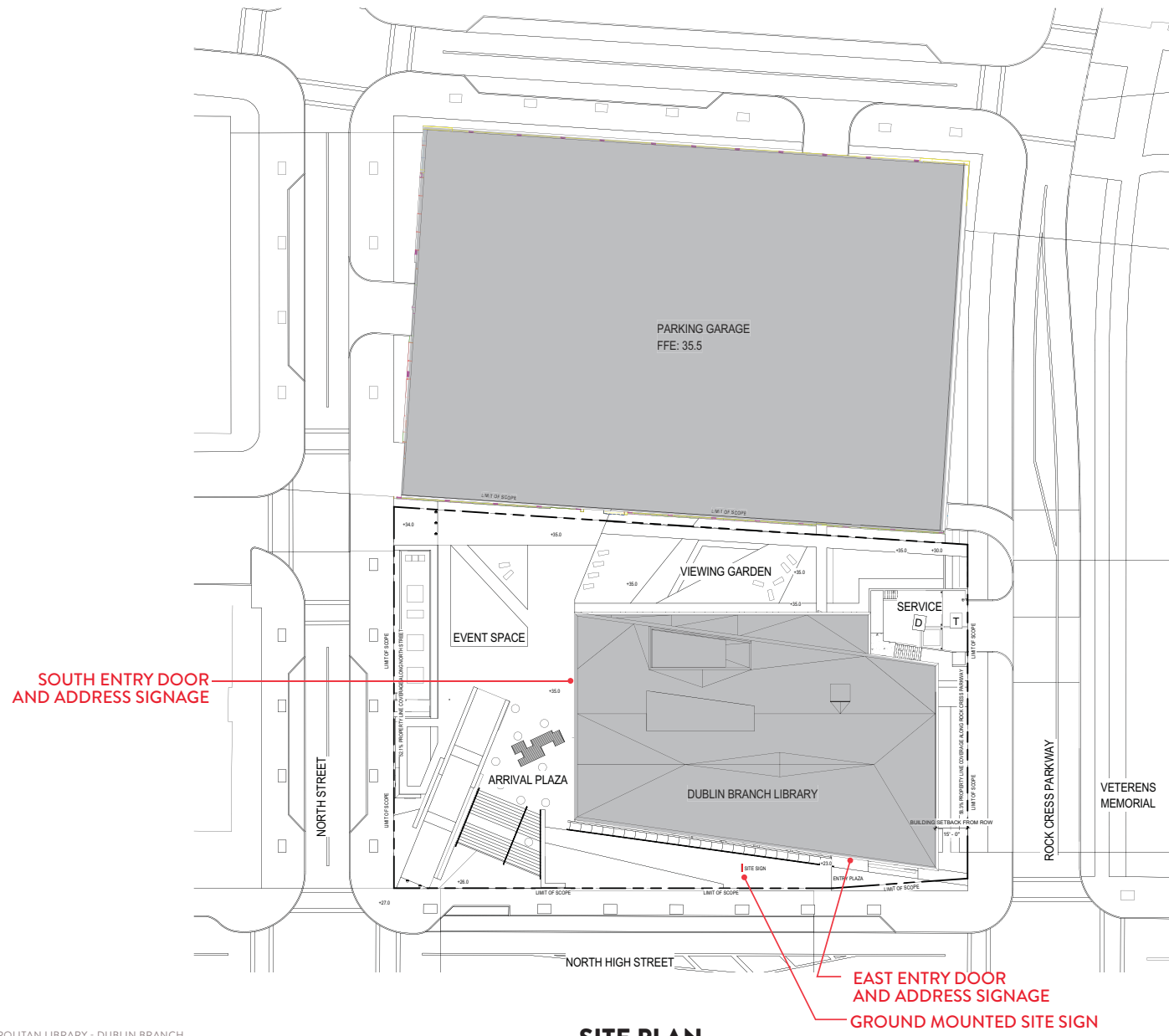




**RENDERING OF NORTHEAST CORNER AT ROCK CRESS AND HIGH (STREET TREES HAVE BEEN OMITTED)**



## PERMANENT LIBRARY SIGNAGE

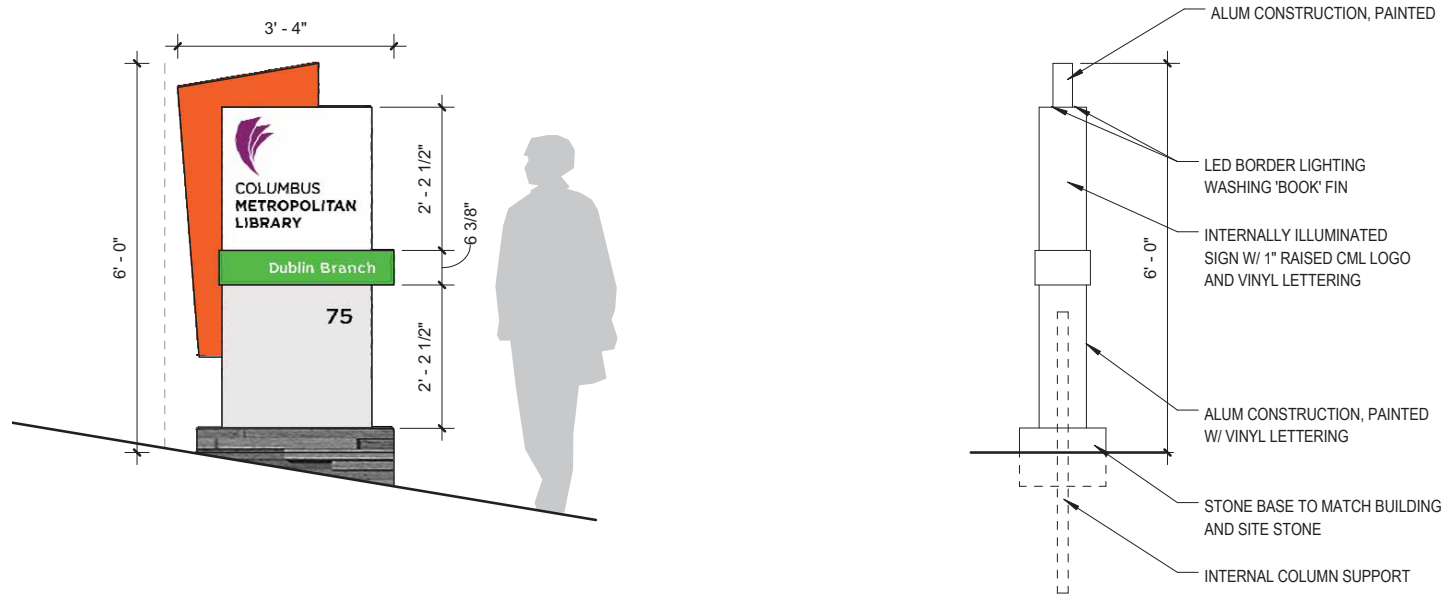


## SITE PLAN







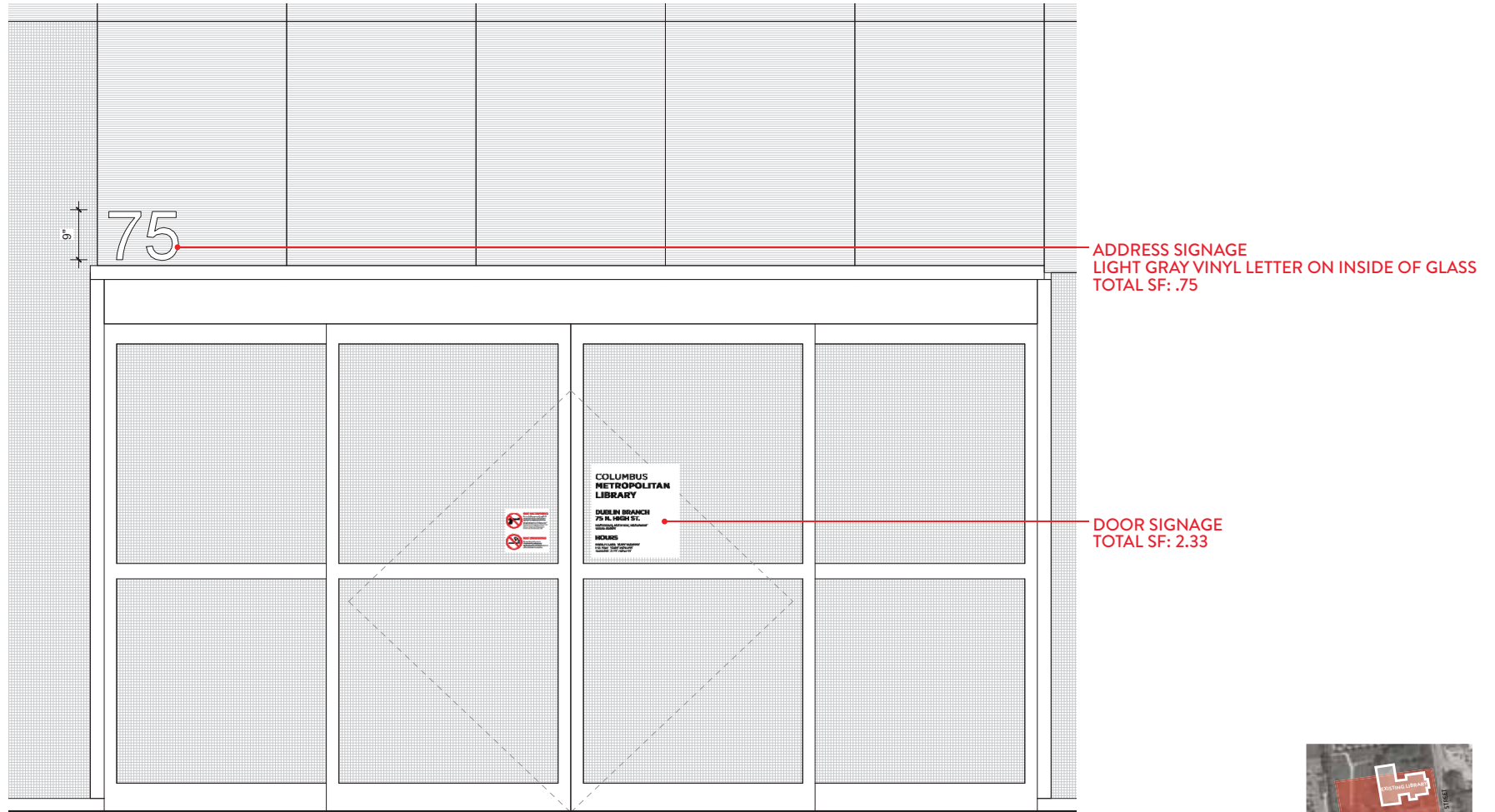


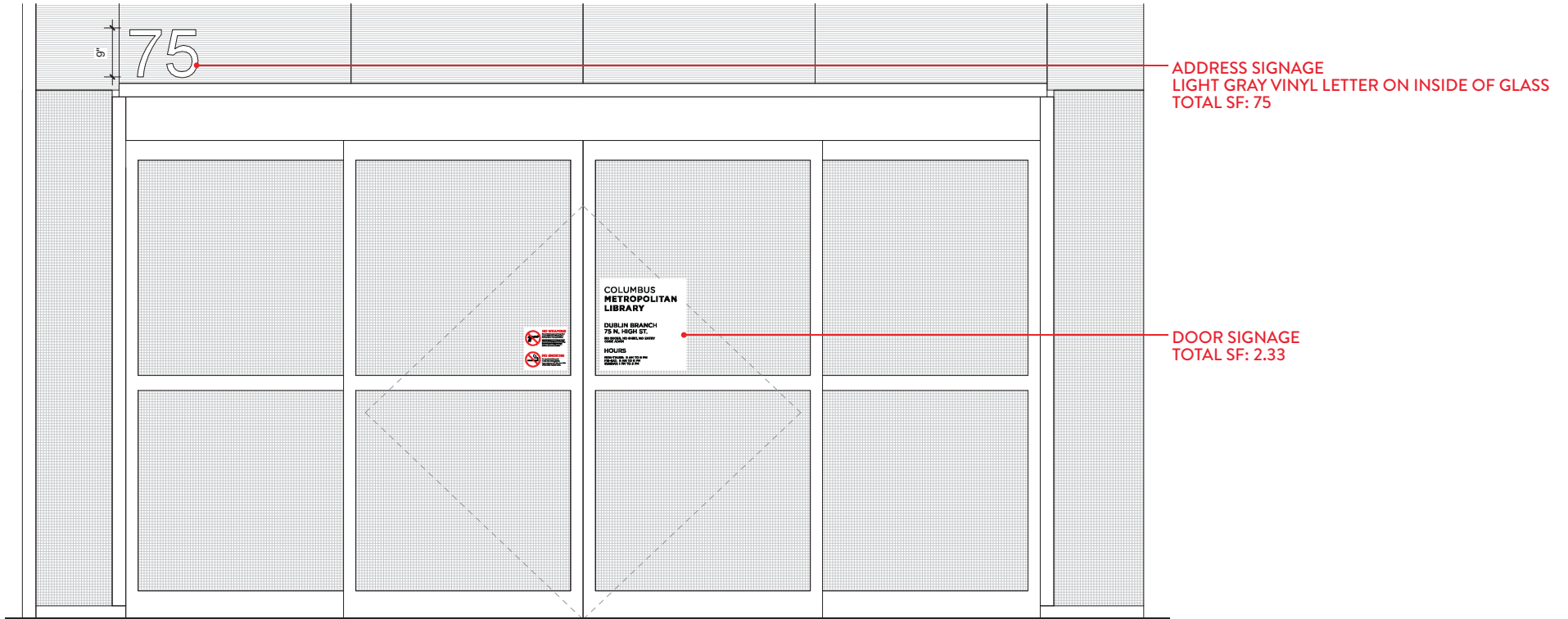
## 1 SIGNAGE ELEVATION

SCALE: 1/2" = 1'-0"

<p><b>Exterior Paint Applications</b> Akzo Nobel www.akzonobel.com</p> <div data-bbox="667 1133 730 1174" style="background-color: orange; width: 30px; height: 25px; margin-bottom: 5px;"></div> <p>"Bookmark" Akzo Nobel 414 C-B Orange Semi-Gloss Finish to Match Pantone 166C</p> <div data-bbox="867 1133 930 1174" style="background-color: green; width: 30px; height: 25px; margin-bottom: 5px;"></div> <p>"Branch" Akzo Nobel 443 C-5 Green Semi-Gloss Finish Match 3M Translucent Brilliant Green Film</p> <div data-bbox="667 1247 730 1287" style="background-color: white; width: 30px; height: 25px; margin-bottom: 5px;"></div> <p>Upper Sign Cabinet White Akzo Nobel White Semi-Gloss Finish</p> <div data-bbox="867 1247 930 1287" style="background-color: silver; width: 30px; height: 25px; margin-bottom: 5px;"></div> <p>Lower Sign Cabinet Silver Akzo Nobel Brushed Aluminum Semi-Gloss Clearcoat Finish</p>	<p><b>3M Translucent Graphic Films</b> www.3mgraphics.com</p> <div data-bbox="1102 1133 1165 1174" style="background-color: purple; width: 30px; height: 25px; margin-bottom: 5px;"></div> <p>3M Scotchlcal Translucent Graphic Film 3630-128 Plum Purple</p> <div data-bbox="1102 1214 1165 1255" style="background-color: green; width: 30px; height: 25px; margin-bottom: 5px;"></div> <p>3M Scotchlcal Translucent Graphic Film 3630-106 Brilliant Green</p>	<p><b>3M Opaque Graphic Films</b> www.3mgraphics.com</p> <div data-bbox="1306 1133 1369 1174" style="background-color: black; width: 30px; height: 25px; margin-bottom: 5px;"></div> <p>3M Scotchlcal Opaque Graphic Film Black 7725-12</p>
---	--	---



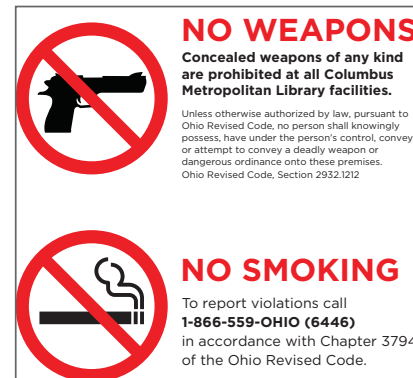






**ENTRY HOURS SIGN (HOURS TBD)**

**SIZE:** 1'-5" TALL BY 1'-4" WIDE (1.89 SF)  
**MATERIAL:** VINYL GRAPHICS ON INSIDE OF GLASS,  
WHITE AREA IS TRANSPARENT, GRAPHICS  
ARE LIGHT GRAY

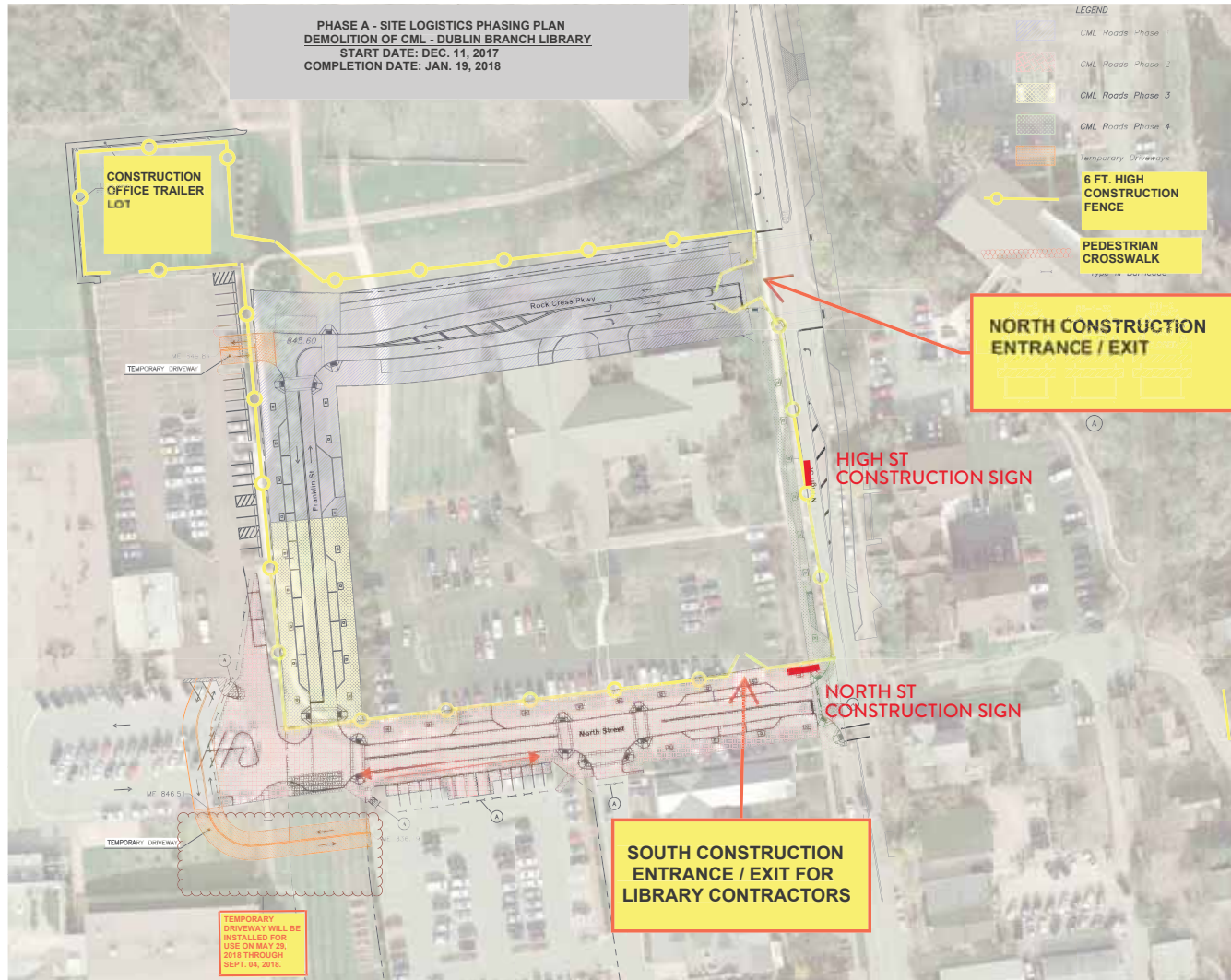


**ENTRY NO WEAPONS, NO SMOKING SIGN**

**SIZE:** 8" TALL BY 8" WIDE (.45 SF)  
**MATERIAL:** VINYL GRAPHICS ON INSIDE OF GLASS,  
WHITE AREA IS TRANSPARENT, GRAPHICS  
COLORS AS SHOWN



## CONSTRUCTION FENCE SIGNAGE







NEW DUBLIN BRANCH | OPENING 2019

COLUMBUS METROPOLITAN LIBRARY

## TEMPORARY LOCATION

**Dublin Village Center**  
6765 Dublin Center Dr.  
Dublin, OH 43017

## A PUBLIC PARTNERSHIP



### HIGH STREET CONSTRUCTION SIGN

SIZE: 16' BY 6'

MATERIAL: BANNER SIGN MOUNTED ON CONSTRUCTION FENCE



NEW DUBLIN BRANCH | OPENING 2019



MOODY•NOLAN



DUBLIN CITY PARKING GARAGE | OPENING 2019

### NORTH STREET CONSTRUCTION SIGN

SIZE: 16' X 6'

MATERIAL: BANNER SIGN MOUNTED ON CONSTRUCTION FENCE

