



March 20, 2020

Dan Starcher
Architect
Archall
614-469-7500

Re: MAG buildings Addresses
Community: City of Dublin, Franklin County, Ohio 43017
Project: MAG Ferrari & Porche Buildings Addresses

Dear Mr. Starcher,

The City of Dublin has assigned two new addresses for the MAG Ferrari and Porche Buildings located on the west side of Ventura Drive. The new addresses assigned are:

Ferrari - 6321 Perimeter Loop Road, Dublin Ohio 43017
Porsche - 6325 Perimeter Loop Road, Dublin Ohio 43017

Please see attachment.

Sincerely,

Carlos Gonzalez
Engineering Technician I

Attachments

Cc: Email Distribution List
Caitlynn Seymour, Police



Know what's below.
Call before you dig.



NORTH



MAG FERRARI
4325 PERIMETER LOOP ROAD
DUBLIN, OHIO
20-009-COM

DATE: 05/15/2020
DRAWN: JAC
REVISION: 1

SITE LAYOUT PLAN

C2.00

10' PROJECT NO. 348

KEYNOTES

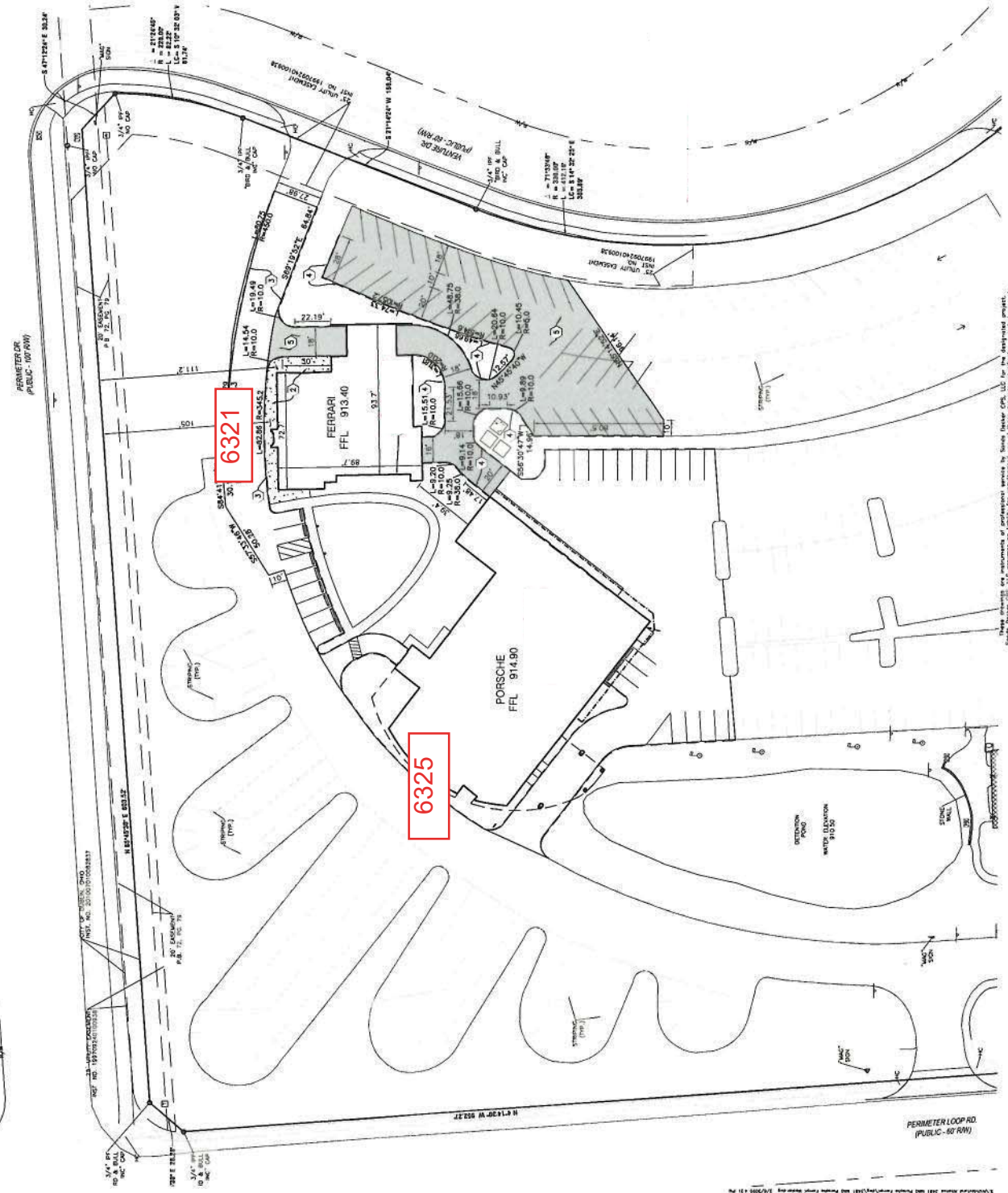
1. PAVEMENT: SEE DETAIL SHEET C5.00. CONTRACTOR TO COORDINATE SURFACE WITH ARCHITECTURAL PLANS.
2. CONCRETE SIDEWALK: SEE DETAIL SHEET C5.00. CONTRACTOR TO COORDINATE SURFACE WITH ARCHITECTURAL PLANS.
3. EXPOSED CONCRETE CURB: SEE DETAIL SHEET C5.00.
4. STANDARD DUTY ASPHALT PAVEMENT: SEE DETAIL SHEET C5.00.

NOTES

- ALL ITEM NUMBERS REFER TO THE CITY OF COLUMBUS CONSTRUCTION AND MATERIAL SPECIFICATIONS, LATEST EDITION, UNLESS OTHERWISE NOTED.
- ALL DIMENSIONS SHOWN ARE TO FACE OF CURB, WHERE APPLICABLE.
- FOR VEHICLE DISPLAY AREA SCORING PATTERN, SEE ARCHITECTURAL PLANS.
- DETAILS: ARCHITECTURAL & LANDSCAPE PLANS FOR ADDITIONAL DETAILS.
- FINISH: FINISHES INCLUDING PARKING SPACES, TRANSVERSE CURBS, AND SIDEWALKS TO BE "LAPPED" AS SHOWN PER ITEMS 611 & 612.
- COORDINATE ALL SURFACE TREATMENTS AND APPLICATIONS AND CONCRETE JOINTS WITH ARCHITECTURAL PLANS.
- PROTECTION PRIOR TO CONSTRUCTION. SEE DETAIL SHEET C5.00.

PAVEMENT LEGEND

- 1. CONCRETE SIDEWALK
- 2. STANDARD DUTY ASPHALT PAVEMENT



These drawings are measurements of preexisting services by Sandy Decker C&A, LLC for the proposed project. Sandy Decker C&A, LLC assumes no liability for misinterpretation or use of these drawings, specifications, and documents.