

Longshore Street

6791

6775

6767

6765

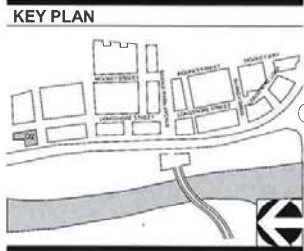
6770

1A TENANT	6,186.0	USF
1B TENANT	3,673.7	USF
1C TENANT	3,330.5	USF
COMMON SPACE	2,230.9	USF
ELEC	422.4	USF
ELEV	170.4	USF
IT	123.9	USF
STAIR	424.9	USF
TERRACE 1	700.2	USF
TERRACE 2	287.3	USF
TERRACE 3	480.5	USF
WATER	100.2	USF
	18,130.8	

Tenant 1  
3,673.7 USF

Tenant 2  
6,186.0 USF

Tenant 3  
3,330.5 USF




D2 - OFFICE  
6767 LONGSHORE LOOP  
07/03/19

1ST FLOOR LEASE AREA  
PLAN





**CITY OF DUBLIN APPROVAL**



**Approved for Construction**  
**BPS.18-21658.CO**  
**34.COM EPR-6498**  
**493520**  
**03/22/19**





---

**FLOOR PLAN GENERAL NOTES**

- ALL DIMENSIONS ARE TO FACE OF WALL (UNLESS NOTED OTHERWISE)
- SEE STRUCTURAL DRAWINGS FOR LOCATIONS OF ALL STEEL REINFORCING IN WALL & FLOOR CONSTRUCTION
- SEE FINISH SCHEDULE FOR ADDITIONAL INFORMATION OF LOCATIONS AND TYPES OF FINISH MATERIALS
- SEE ELEVATIONS AND STRUCTURAL DRAWINGS FOR LOCATIONS OF EXPANSION & CONTROL JOINTS. CONTRACTOR SHALL PROVIDE ADDITIONAL INTERIOR CONTROL JOINTS AS REQUIRED TO COMPLY WITH MANUFACTURING REQUIREMENTS & SPECIFICATIONS AND NATIONAL MASONRY INSTITUTE. SEE DETAILS ON **4202**
- MECHANICAL & ELECTRICAL EQUIPMENT SHALL BE ON HOUSEKEEPING PADS. PADS ARE TO BE PROVIDED BY THE TRADE SUPPLYING THE EQUIPMENT. SEE MECHANICAL AND ELECTRICAL DRAWINGS FOR ADDITIONAL INFORMATION. WORK IS TO BE COORDINATED THROUGH THE GENERAL TRADES CONTRACTOR. PADS 4' MIN. 4" THICK W/ W.F.F. (UNLESS NOTED OTHERWISE)

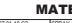
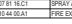
---

**CODED NOTE LEGEND**

 SLOPE OF FLOOR TO DRAINS  
 LOCATION OF STAIRING POINT FOR STOREFRONT & WINDOW WALL SYSTEMS  
 T&B  
 T&B  
 T&B

---

**RATED WALL LEGEND**

 1 HOUR FIRE BARRIER TO DECK  
 2 HOUR FIRE BARRIER TO DECK

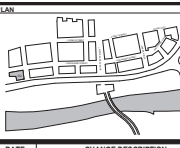
---

**MATERIAL KEYNOTES**

**07 01 01 02** SPRAY APPLIED REINFORCING ON COLUMN FOR 1 HOUR RATING  
**07 01 01 03** SPRAY APPLIED REINFORCING ON COLUMN FOR 2 HOUR RATING  
**02 40 00 01** FIRE EXTINGUISHER

---



**SITE PLAN**



---

#	DATE	CHANGE DESCRIPTION
1	10/16/2019	BULLETIN #1
2	03/06/2019	BULLETIN #4

---

**D BLOCK - D2 OFFICE**  
**BLDG**  
 1915 LONGSHORE STREET DUBLIN, OHIO 43017  



---



**MOODY • NOLAN**

300 Spruce Street  
 Suite 300  
 Columbus, Ohio 43215

Phone: (614) 481-4664  
 Fax: (614) 280-8881  
[www.moody-nolan.com](http://www.moody-nolan.com)

---

Drawing Title: \_\_\_\_\_

---

**SECOND FLOOR PLAN**

---



CURTIS J. MOODY, LIC. #7368  
 P.E.P. PAID 12/10/19

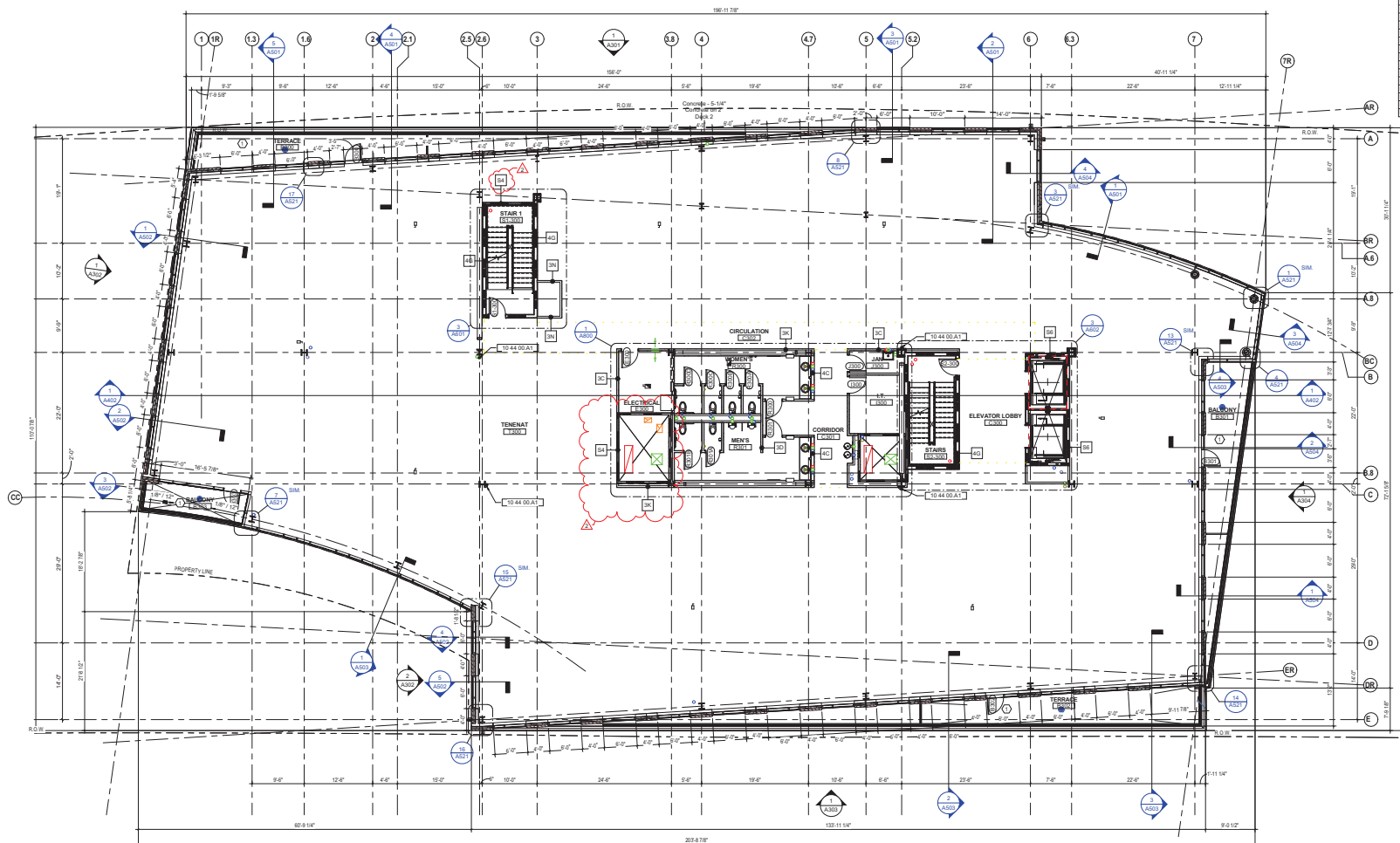
08-16-2018

DRAWN BY: DOM      CHECKED BY: PPP

17040.01

**A102**

CONSTRUCTION PERMIT / B.D.



**1 PLAN** THIRD FLOOR  
1/8" = 1'-0"

COLUMN FIRE PROOFING		
LOCATION	FIRE RATING	US
1.76	1 HR	X
A-1	1 HR	X
A-3	1 HR	X
A-4	2 HR	X
A-5	1 HR	X
A-6	1 HR	X
A-6.1R	1 HR	X
A-6.2R	2 HR	X
A-6.3R	2 HR	X
A-6.4	2 HR	X
S-1.5	1 HR	X
S-1.6R	1 HR	X
S-1.7R	2 HR	X
S-1.8	2 HR	X
S-1.9	2 HR	X
S-2	1 HR	X
S-2.1	1 HR	X
S-2.2	1 HR	X
S-2.3	1 HR	X
S-2.4	1 HR	X
S-2.5	1 HR	X
S-2.6	1 HR	X
S-2.7	1 HR	X
S-2.8	1 HR	X
S-2.9	1 HR	X
S-3	1 HR	X
S-3.1	1 HR	X
S-3.2	1 HR	X
S-3.3	1 HR	X
S-3.4	1 HR	X
S-3.5	1 HR	X
S-3.6	1 HR	X
S-3.7	1 HR	X
S-3.8	1 HR	X
S-3.9	1 HR	X
S-4	1 HR	X
S-4.1	1 HR	X
S-4.2	1 HR	X
S-4.3	2 HR	X
S-4.4	2 HR	X
S-4.5	1 HR	X
S-4.6	1 HR	X
S-4.7	1 HR	X
S-4.8	1 HR	X
S-4.9	1 HR	X
S-5	1 HR	X
S-5.1	1 HR	X
S-5.2	1 HR	X
S-5.3	1 HR	X
S-5.4	1 HR	X
S-5.5	1 HR	X
S-5.6	1 HR	X
S-5.7	1 HR	X
S-5.8	1 HR	X
S-5.9	1 HR	X
S-6	1 HR	X
S-6.1	1 HR	X
S-6.2	1 HR	X
S-6.3	1 HR	X
S-6.4	1 HR	X
S-6.5	1 HR	X
S-6.6	1 HR	X
S-6.7	1 HR	X
S-6.8	1 HR	X
S-6.9	1 HR	X
S-7	1 HR	X
S-7.1	1 HR	X
S-7.2	1 HR	X
S-7.3	1 HR	X
S-7.4	1 HR	X
S-7.5	1 HR	X
S-7.6	1 HR	X
S-7.7	1 HR	X
S-7.8	1 HR	X
S-7.9	1 HR	X
S-8	1 HR	X
S-8.1	1 HR	X
S-8.2	1 HR	X
S-8.3	1 HR	X
S-8.4	1 HR	X
S-8.5	1 HR	X
S-8.6	1 HR	X
S-8.7	1 HR	X
S-8.8	1 HR	X
S-8.9	1 HR	X
S-9	1 HR	X
S-9.1	1 HR	X
S-9.2	1 HR	X
S-9.3	1 HR	X
S-9.4	1 HR	X
S-9.5	1 HR	X
S-9.6	1 HR	X
S-9.7	1 HR	X
S-9.8	1 HR	X
S-9.9	1 HR	X
S-10	1 HR	X
S-10.1	1 HR	X
S-10.2	1 HR	X
S-10.3	1 HR	X
S-10.4	1 HR	X
S-10.5	1 HR	X
S-10.6	1 HR	X
S-10.7	1 HR	X
S-10.8	1 HR	X
S-10.9	1 HR	X
S-11	1 HR	X
S-11.1	1 HR	X
S-11.2	1 HR	X
S-11.3	1 HR	X
S-11.4	1 HR	X
S-11.5	1 HR	X
S-11.6	1 HR	X
S-11.7	1 HR	X
S-11.8	1 HR	X
S-11.9	1 HR	X
S-12	1 HR	X
S-12.1	1 HR	X
S-12.2	1 HR	X
S-12.3	1 HR	X
S-12.4	1 HR	X
S-12.5	1 HR	X
S-12.6	1 HR	X
S-12.7	1 HR	X
S-12.8	1 HR	X
S-12.9	1 HR	X
S-13	1 HR	X
S-13.1	1 HR	X
S-13.2	1 HR	X
S-13.3	1 HR	X
S-13.4	1 HR	X
S-13.5	1 HR	X
S-13.6	1 HR	X
S-13.7	1 HR	X
S-13.8	1 HR	X
S-13.9	1 HR	X
S-14	1 HR	X
S-14.1	1 HR	X
S-14.2	1 HR	X
S-14.3	1 HR	X
S-14.4	1 HR	X
S-14.5	1 HR	X
S-14.6	1 HR	X
S-14.7	1 HR	X
S-14.8	1 HR	X
S-14.9	1 HR	X
S-15	1 HR	X
S-15.1	1 HR	X
S-15.2	1 HR	X
S-15.3	1 HR	X
S-15.4	1 HR	X
S-15.5	1 HR	X
S-15.6	1 HR	X
S-15.7	1 HR	X
S-15.8	1 HR	X
S-15.9	1 HR	X
S-16	1 HR	X
S-16.1	1 HR	X
S-16.2	1 HR	X
S-16.3	1 HR	X
S-16.4	1 HR	X
S-16.5	1 HR	X
S-16.6	1 HR	X
S-16.7	1 HR	X
S-16.8	1 HR	X
S-16.9	1 HR	X
S-17	1 HR	X
S-17.1	1 HR	X
S-17.2	1 HR	X
S-17.3	1 HR	X
S-17.4	1 HR	X
S-17.5	1 HR	X
S-17.6	1 HR	X
S-17.7	1 HR	X
S-17.8	1 HR	X
S-17.9	1 HR	X
S-18	1 HR	X
S-18.1	1 HR	X
S-18.2	1 HR	X
S-18.3	1 HR	X
S-18.4	1 HR	X
S-18.5	1 HR	X
S-18.6	1 HR	X
S-18.7	1 HR	X
S-18.8	1 HR	X
S-18.9	1 HR	X
S-19	1 HR	X
S-19.1	1 HR	X
S-19.2	1 HR	X
S-19.3	1 HR	X
S-19.4	1 HR	X
S-19.5	1 HR	X
S-19.6	1 HR	X
S-19.7	1 HR	X
S-19.8	1 HR	X
S-19.9	1 HR	X
S-20	1 HR	X
S-20.1	1 HR	X
S-20.2	1 HR	X
S-20.3	1 HR	X
S-20.4	1 HR	X
S-20.5	1 HR	X
S-20.6	1 HR	X
S-20.7	1 HR	X
S-20.8	1 HR	X
S-20.9	1 HR	X
S-21	1 HR	X
S-21.1	1 HR	X
S-21.2	1 HR	X
S-21.3	1 HR	X
S-21.4	1 HR	X
S-21.5	1 HR	X
S-21.6	1 HR	X
S-21.7	1 HR	X
S-21.8	1 HR	X
S-21.9	1 HR	X
S-22	1 HR	X
S-22.1	1 HR	X
S-22.2	1 HR	X
S-22.3	1 HR	X
S-22.4	1 HR	X
S-22.5	1 HR	X
S-22.6	1 HR	X
S-22.7	1 HR	X
S-22.8	1 HR	X
S-22.9	1 HR	X
S-23	1 HR	X
S-23.1	1 HR	X
S-23.2	1 HR	X
S-23.3	1 HR	X
S-23.4	1 HR	X
S-23.5	1 HR	X
S-23.6	1 HR	X
S-23.7	1 HR	X
S-23.8	1 HR	X
S-23.9	1 HR	X
S-24	1 HR	X
S-24.1	1 HR	X
S-24.2	1 HR	X
S-24.3	1 HR	X
S-24.4	1 HR	X
S-24.5	1 HR	X
S-24.6	1 HR	X
S-24.7	1 HR	X
S-24.8	1 HR	X
S-24.9	1 HR	X
S-25	1 HR	X
S-25.1	1 HR	X
S-25.2	1 HR	X
S-25.3	1 HR	X
S-25.4	1 HR	X
S-25.5	1 HR	X
S-25.6	1 HR	X
S-25.7	1 HR	X
S-25.8	1 HR	X
S-25.9	1 HR	X
S-26	1 HR	X
S-26.1	1 HR	X
S-26.2	1 HR	X
S-26.3	1 HR	X
S-26.4	1 HR	X
S-26.5	1 HR	X
S-26.6	1 HR	X
S-26.7	1 HR	X
S-26.8	1 HR	X
S-26.9	1 HR	X
S-27	1 HR	X
S-27.1	1 HR	X
S-27.2	1 HR	X
S-27.3	1 HR	X
S-27.4	1 HR	X
S-27.5	1 HR	X
S-27.6	1 HR	X
S-27.7	1 HR	X
S-27.8	1 HR	X
S-27.9	1 HR	X
S-28	1 HR	X
S-28.1	1 HR	X
S-28.2	1 HR	X
S-28.3	1 HR	X
S-28.4	1 HR	X
S-28.5	1 HR	X
S-28.6	1 HR	X
S-28.7	1 HR	X
S-28.8	1 HR	X
S-28.9	1 HR	X
S-29	1 HR	X
S-29.1	1 HR	X
S-29.2	1 HR	X
S-29.3	1 HR	X
S-29.4	1 HR	X
S-29.5	1 HR	X
S-29.6	1 HR	X
S-29.7	1 HR	X
S-29.8	1 HR	X
S-29.9	1 HR	X
S-30	1 HR	X
S-30.1	1 HR	X
S-30.2	1 HR	X
S-30.3	1 HR	X
S-30.4	1 HR	X
S-30.5	1 HR	X
S-30.6	1 HR	X
S-30.7	1 HR	X
S-30.8	1 HR	X
S-30.9	1 HR	X
S-31	1 HR	X
S-31.1	1 HR	X
S-31.2	1 HR	X
S-31.3	1 HR	X
S-31.4	1 HR	X
S-31.5	1 HR	X
S-31.6	1 HR	X
S-31.7	1 HR	X
S-31.8	1 HR	X
S-31.9	1 HR	X
S-32	1 HR	X
S-32.1	1 HR	X
S-32.2	1 HR	X
S-32.3	1 HR	X
S-32.4	1 HR	X
S-32.5	1 HR	X
S-32.6	1 HR	X
S-32.7	1 HR	X
S-32.8	1 HR	X
S-32.9	1 HR	X
S-33	1 HR	X
S-33.1	1 HR	X
S-33.2	1 HR	X
S-33.3	1 HR	X
S-33.4	1 HR	X
S-33.5	1 HR	X
S-33.6	1 HR	X
S-33.7	1 HR	X
S-33.8	1 HR	X
S-33.9	1 HR	X
S-34	1 HR	X
S-34.1	1 HR	X
S-34.2	1 HR	X
S-34.3	1 HR	X
S-34.4	1 HR	X
S-34.5	1 HR	X
S-34.6	1 HR	X
S-34.7	1 HR	X
S-34.8	1 HR	X
S-34.9	1 HR	X
S-35	1 HR	X
S-35.1	1 HR	X
S-35.2	1 HR	X
S-35.3	1 HR	X
S-35.4	1 HR	X
S-35.5	1 HR	X
S-35.6	1 HR	X
S-35.7	1 HR	X
S-35.8	1 HR	X
S-35.9	1 HR	X
S-36	1 HR	X
S-36.1	1 HR	X
S-36.2	1 HR	X
S-36.3	1 HR	X
S-36.4	1 HR	X
S-36.5	1 HR	X
S-36.6	1 HR	X
S-36.7	1 HR	X
S-36.8	1 HR	X
S-36.9	1 HR	X
S-37	1 HR	X
S-37.1	1 HR	X
S-37.2	1 HR	X
S-37.3	1 HR	X
S-37.4	1 HR	X
S-37.5	1 HR	X
S-37.6	1 HR	X
S-37.7	1 HR	X
S-37.8	1 HR	X
S-37.9	1 HR	X
S-38	1 HR	X
S-38.1	1 HR	X
S-38.2	1 HR	X
S-38.3	1 HR	X
S-38.4	1 HR	X
S-38.5	1 HR	X
S-38.6	1 HR	X
S-38.7	1 HR	X
S-38.8	1 HR	X
S-38.9	1 HR	X
S-39	1 HR	X
S-39.1	1 HR	X
S-39.2	1 HR	X
S-39.3	1 HR	X
S-39.4	1 HR	X
S-39.5	1 HR	X
S-39.6	1 HR	X
S-39.7	1 HR	X
S-39.8	1 HR	X
S-39.9	1 HR	X
S-40	1 HR	X
S-40.1	1 HR	X
S-40.2	1 HR	X
S-40.3	1 HR	X
S-40.4	1 HR	X
S-40.5	1 HR	X
S-40.6	1 HR	X
S-40.7	1 HR	X
S-40.8	1 HR	X
S-40.9	1 HR	X
S-41	1 HR	X
S-41.1	1 HR	X
S-41.2	1 HR	X
S-41.3	1 HR	X
S-41.4	1 HR	X
S-41.5	1 HR	X
S-41.6	1 HR	X
S-41.7	1 HR	X
S-41.8	1 HR	X
S-41.9	1 HR	X
S-42	1 HR	X
S-42.1	1 HR	X
S-42.2	1 HR	X
S-42.3	1 HR	X
S-42.4	1 HR	X
S-42.5	1 HR	X
S-42.6	1 HR	X
S-42.7	1 HR	X
S-42.8	1 HR	X
S-42.9	1 HR	X
S-43	1 HR	X
S-43.1	1 HR	X
S-43.2	1 HR	X
S-43.3	1 HR	X
S-43.4	1 HR	X
S-43.5	1 HR	X
S-43.6	1 HR	X
S-43.7	1 HR	X
S-43.8	1 HR	X
S-43.9	1 HR	X
S-44	1 HR	X
S-44.1	1 HR	X
S-44.2	1 HR	X
S-44.3	1 HR	X
S-44.4	1 HR	X
S-44.5	1 HR	X
S-44.6	1 HR	X
S-44.7	1 HR	X
S-44.8	1 HR	X
S-44.9	1 HR	X
S-45	1 HR	X
S-45.1	1 HR	X
S-45.2	1 HR	X
S-45.3	1 HR	X
S-45.4	1 HR	X
S-45.5	1 HR	X
S-45.6	1 HR	X
S-45.7	1 HR	X
S-45.8	1 HR	X
S-45.9	1 HR	X
S-46	1 HR	X
S-46.1	1 HR	X
S-46.2	1 HR	X
S-46.3	1 HR	X
S-46.4	1 HR	X
S-46.5	1 HR	X
S-46.6	1 HR	X
S-46.7	1 HR	X
S-46.8	1 HR	X
S-46.9	1 HR	X
S-47	1 HR	X
S-47.1	1 HR	X
S-47.2	1 HR	X
S-47.3	1 HR	X
S-47.4	1 HR	X
S-47.5	1 HR	X
S-47.6	1 HR	X
S-47.7	1 HR	X
S-47.8	1 HR	X
S-47.9	1 HR	X
S-48	1 HR	X
S-48.1	1 HR	X
S-48.2	1 HR	X
S-48.3	1 HR	X
S-48.4	1 HR	X
S-48.5	1 HR	X
S-48.6	1 HR	X

## CITY OF DUBLIN APPROVAL



Approved for  
Construction  
BPS.18-21658.CO  
M.COM EPR.649  
49350  
03/22/19

**FLOOR PLAN GENERAL NOTES**

1. ALL DIMENSIONS ARE TO FACE OF WALL (UNLESS NOTED OTHERWISE).  
2. SEE STRUCTURAL DRAWINGS FOR LOCATIONS OF ALL STEEL REINFORCING WALL & FLOOR CONSTRUCTION.  
3. SEE FINISH SCHEDULE FOR ADDITIONAL INFORMATION OF LOCATIONS AND TYPES OF FINISH MATERIALS.  
4. SEE ELEVATIONS AND STRUCTURAL DRAWINGS FOR LOCATIONS OF EXPANSION & CONTROL JOINTS. CONTRACTOR SHALL PROVIDE ADDITIONAL INTERIOR CONTROL JOINTS AS REQUIRED TO COMPLY WITH MAXIMUM JOINT REQUIREMENTS & SPECIFICATIONS AND NATIONAL MASONRY INSTITUTE. SEE DETAILS ON ADD.  
5. MECHANICAL & ELECTRICAL EQUIPMENT SHALL BE ON HOUSEKEEPING PADS. PADS ARE TO BE PROVIDED BY THE TRADE SUPPLYING THE EQUIPMENT. SEE MECHANICAL AND ELECTRICAL DRAWINGS FOR ADDITIONAL INFORMATION. WORK IS TO BE COORDINATED THROUGH THE GENERAL TRADES CONTRACTOR PADS 4" MIN. @ THICK W/ W.F. UNLESS NOTED OTHERWISE.

**CODED NOTE LEGEND**

- 1 SLOPE FLOOR TO DRAINS
- 2 LOCATION OF STARTING POINT FO STOREFRONT & WINDOW WALL SYSTEM
- 3 TBD
- 4 TBD
- 5 TBD

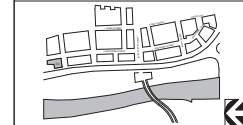
### RATED WALL LEGEND

- 1 HOUR FIRE BARRIER TO DECK.
- 2 HOUR FIRE BARRIER TO DECK.

## MATERIAL KEYNOTES

- |             |                   |
|-------------|-------------------|
| 10 44 00 01 | FIRE EXTINGUISHER |
|-------------|-------------------|

## SITE PLAN



#	DATE	CHANGE DESCRIPTION
1	10/16/2018	BULLETIN #1
2	03/06/2019	BULLETIN #4

**D BLOCK - D2 OFFICE  
BLDG**  
6767 LONGSHORE STREET DUBLIN, OHIO  
43017  
for  
**Crawford Hoying**



300 Spruce Street  
Suite 300  
Columbus, Ohio 43215  
Phone: (614) 461-4666  
Fax: (614) 280-8888  
[www.moodynolan.com](http://www.moodynolan.com)

DRAWING TITLE:

THIRD FLOOR PLAN

### THIRD FLOOR PLAN



08-16-2018	
DRAWN BY: DGN	CHECKED BY: PFP
17040.01	
<b>A103</b>	
CONSTRUCTION PERMIT / BID	



**CITY OF DUBLIN APPROVAL**

**City of Dublin**  
Ireland

**Approved for Construction**  
**BPS.16-21658.CO**  
**M.COM EPR.6498**

**49350**  
**03/22/19**

### FLOOR PLAN GENERAL NOTES

1. ALL DIMENSIONS ARE TO FACE OF WALL (UNLESS NOTED OTHERWISE).
2. SEE STRUCTURAL DRAWINGS FOR LOCATIONS OF ALL STEEL REINFORCING WALL & FLOOR CONSTRUCTION
3. SEE IRISH SCHEDULE FOR ADDITIONAL INFORMATION OF LOCATIONS AND TYPES OF FINISH MATERIALS.
4. SEE ELEVATIONS AND STRUCTURAL DRAWINGS FOR LOCATIONS OF EXPANSION & CONTROL JOINTS. CONTRACTOR SHALL PROVIDE ADDITIONAL INTERIOR CONTROL JOINTS AS REQUIRED TO COMPLY WITH MAXIMUM SPACING REQUIREMENTS IN SPECIFIC CODES AND NATIONAL MASONRY INSTITUTE. SEE DETAILS ON **404A**.
5. MECHANICAL & ELECTRICAL EQUIPMENT SHALL BE ON-HOUSEKEEPING PADS. PADS ARE TO BE PROVIDED BY THE TRADE SUPPLYING THE EQUIPMENT. SEE MECHANICAL AND ELECTRICAL DRAWINGS FOR ADDITIONAL INFORMATION. WORK IS TO BE COORDINATED THROUGH THE GENERAL TRADES CONTRACTOR. PADS AT MIN. 4" THICK W/ REIN. UNLESS NOTED OTHERWISE.

### CODED NOTE LEGEND

①	SLOPE FLOOR TO DRAINS
②	LOCATION OF STAIRING POINT TO STOREFRONT & WINDOW WALL SYSTEMS
③	T&D
④	T&D
⑤	T&D

### TESTED WALL LEGEND

	1-HOUR FIRE BARRIER TO DECK
	2-HOUR FIRE BARRIER TO DECK

### MATERIAL KEYNOTES

10 44 04 04	FIRE EXTINGUISHER
-------------	-------------------

**SITE PLAN**

#	DATE	CHANGE DESCRIPTION
1	10/16/2018	BULLETIN #1
2	03/06/2019	BULLETIN #4

**D BLOCK - D2 OFFICE**  
**BLDG**

1057 LONGSHORE STREET DUBLIN, OHIO  
43017

**Crawford Hoying**

**MOODY•NOLAN**

300 Spruce Street  
Suite 300  
Columbus, Ohio 43215

Phone: (614) 461-4666  
Fax: (614) 280-8888  
[www.moody-nolan.com](http://www.moody-nolan.com)

Drawing TITLE

## FOURTH FLOOR PLAN

CURTIS J. MOODY, LIC. #7866  
EPR. DATE 10/16/2018

08-16-2018

DRAWN BY: DON    CHECKED BY: PPP

17040.01

# A104

CONSTRUCTION PERMIT / BDO



**CITY OF DUBLIN APPROVAL**

**Approved for Construction**  
**BPS.16-21658.CO**  
**M.COM EPR.6498**  
**49350**  
**03/22/19**

### FLOOR PLAN GENERAL NOTES

1. ALL DIMENSIONS ARE TO FACE OF WALL (UNLESS NOTED OTHERWISE).
2. SEE STRUCTURAL DRAWINGS FOR LOCATIONS OF ALL STEEL REINFORCING WALL & FLOOR CONSTRUCTION.
3. SEE FINISH SCHEDULE FOR ADDITIONAL INFORMATION OF LOCATIONS AND TYPES OF FINISH MATERIALS.
4. SEE ELEVATIONS AND STRUCTURAL DRAWINGS FOR LOCATIONS OF EXPANSION & CONTRACTION JOINTS. CONTRACTOR SHALL PROVIDE ADDITIONAL INTERIOR CONTROL JOINTS AS REQUIRED TO COMPLY WITH MAXIMUM SPACING REQUIREMENTS IN APPLICABLE STATE AND NATIONAL MASONRY INSTITUTE. SEE DETAILS ON AXXX.
5. MECHANICAL & ELECTRICAL EQUIPMENT SHALL BE ON-HOUSEKEEPING PADS. PADS ARE TO BE PROVIDED BY THE TRADE SUPPLYING THE EQUIPMENT. SEE MECHANICAL AND ELECTRICAL DRAWINGS FOR ADDITIONAL INFORMATION. WORK IS TO BE COORDINATED THROUGH THE GENERAL TRADES CONTRACTOR. PADS AT 4" MIN. P THICK W/ W.F.F., UNLESS NOTED OTHERWISE.

### CODED NOTE LEGEND

①  
 SLOPE OF FLOOR TO DRAINS

②  
 LOCATION OF STAIRING POINT TO STOREFRONT & WINDOW WALL SYSTEMS

TSD  
 TYPED

TSD  
 TYPED

### RATED WALL LEGEND

1-HOUR FIRE BARRIER TO DECK

2-HOUR FIRE BARRIER TO DECK

### MATERIAL KEYNOTES

12 44 55.01

[FIRE EXTINGUISHER]

#### SITE PLAN

#	DATE	CHANGE DESCRIPTION
1	10/16/2018	BULLETIN #1
2	03/06/2019	BULLETIN #4

**D BLOCK - D2 OFFICE BLDG**  
 1801 LONGSHORE STREET DUBLIN, OHIO 43017  
**Crawford Hoying**

**MOODY•NOLAN**

300 Spruce Street  
 Suite 300  
 Columbus, Ohio 43215

Phone: (614) 461-4666  
 Fax: (614) 280-8888  
[www.moodynolan.com](http://www.moodynolan.com)

Drawing TITLE: \_\_\_\_\_

### FIFTH FLOOR PLAN

CURTIS J. MOODY, LIC. #7866  
 EPR. PATE. 1533/07951

**08-16-2018**  
 SET

DRAWN BY: DON

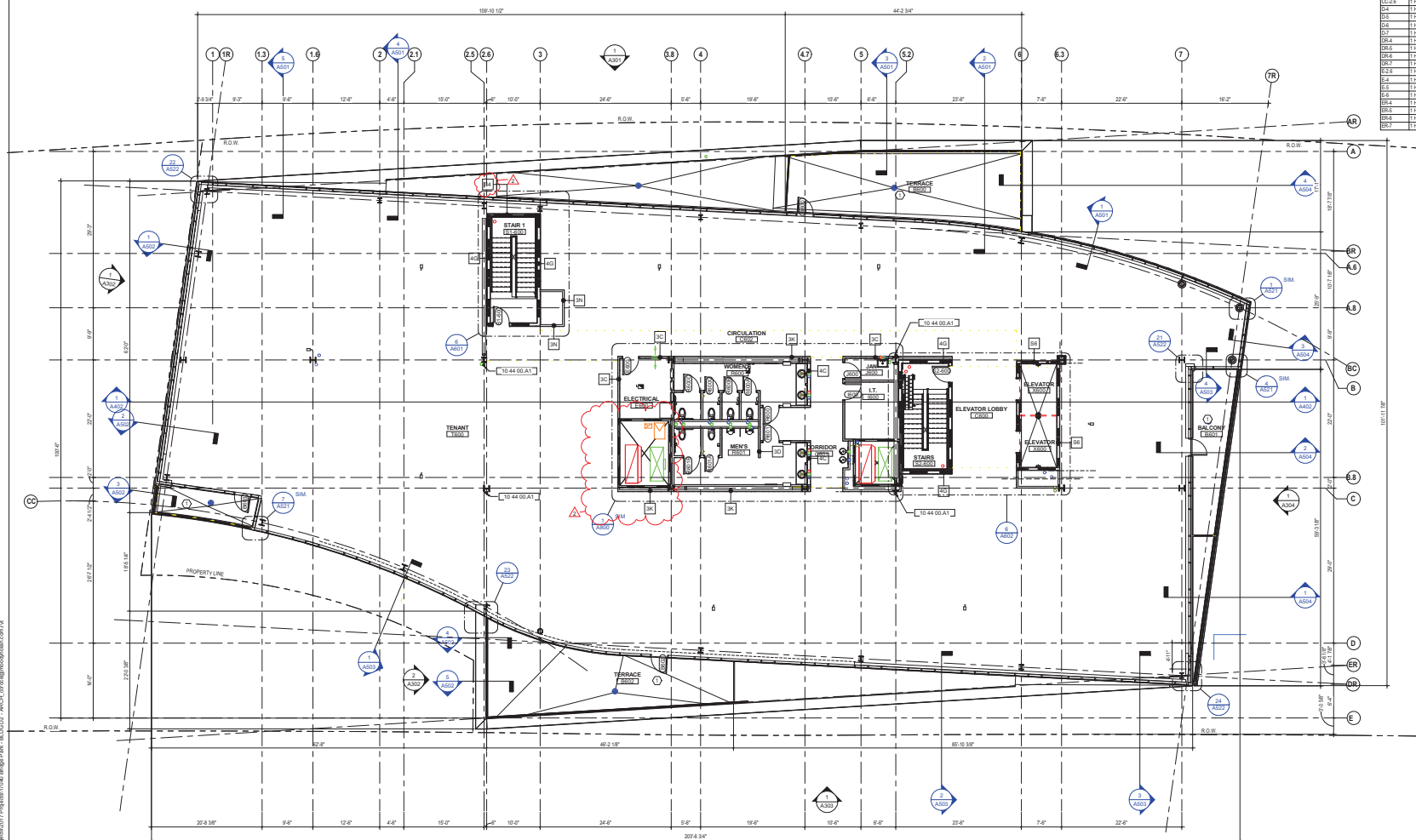
CHECKED BY: PPP

17040.01

A105

CONSTRUCTION PERMIT / BID





1 PLAN SIXTH FLOOR  
1/8" = 1'-0"

COLLAR FIRE PROOFING		
LOCATION	FIRE RATING	USE
1.7N	1 HR	X70
A-1	1 HR	X70
A-2	1 HR	X70
A-3	1 HR	X70
A-4	2 HR	X70
A-5	1 HR	X70
A-6	1 HR	X70
A-8-1R	1 HR	X70
A-8-7R	1 HR	X70
HR-1R	1 HR	X70
HR-2	1 HR	X70
HR-4	2 HR	X70
B-1	1 HR	X70
B-1R	1 HR	X70
B-2	2 HR	X70
B-3	2 HR	X70
B-3-1R	2 HR	X70
B-3-2	2 HR	X70
B-3-3	2 HR	X70
B-7	1 HR	X70
B-7R	1 HR	X70
B-8	1 HR	X70
BC-1	1 HR	X70
BC-7	1 HR	X70
BR-2	1 HR	X70
BR-2.5	1 HR	X70
C-3	2 HR	X70
BR-3	2 HR	X70
BR-5	1 HR	X70
C-2.5	2 HR	X70
C-3	2 HR	X70
C-4	2 HR	X70
C-4.2	2 HR	X70
C-5	2 HR	X70
C-5.2	2 HR	X70
C-7	2 HR	X70
C-7.1	1 HR	X70
C-2-1	1 HR	X70
OC-2-6	1 HR	X70
OC-6	1 HR	X70
OC-7	1 HR	X70
OC-8	1 HR	X70
D-5	1 HR	X70
D-6	1 HR	X70
D-8	1 HR	X70
D-9	1 HR	X70
DR-6	1 HR	X70
DR-7	1 HR	X70
DR-8	1 HR	X70
DR-9	1 HR	X70
E-2	1 HR	X70
E-4	1 HR	X70
E-5	1 HR	X70
ER-6	1 HR	X70
ER-7	1 HR	X70
ER-8	1 HR	X70
ER-9	1 HR	X70
ER-10	1 HR	X70
ER-11	1 HR	X70
ER-12	1 HR	X70
ER-13	1 HR	X70
ER-14	1 HR	X70
ER-15	1 HR	X70
ER-16	1 HR	X70
ER-17	1 HR	X70
ER-18	1 HR	X70
ER-19	1 HR	X70
ER-20	1 HR	X70
ER-21	1 HR	X70
ER-22	1 HR	X70
ER-23	1 HR	X70
ER-24	1 HR	X70
ER-25	1 HR	X70
ER-26	1 HR	X70
ER-27	1 HR	X70
ER-28	1 HR	X70
ER-29	1 HR	X70
ER-30	1 HR	X70
ER-31	1 HR	X70
ER-32	1 HR	X70
ER-33	1 HR	X70
ER-34	1 HR	X70
ER-35	1 HR	X70
ER-36	1 HR	X70
ER-37	1 HR	X70
ER-38	1 HR	X70
ER-39	1 HR	X70
ER-40	1 HR	X70
ER-41	1 HR	X70
ER-42	1 HR	X70
ER-43	1 HR	X70
ER-44	1 HR	X70
ER-45	1 HR	X70
ER-46	1 HR	X70
ER-47	1 HR	X70
ER-48	1 HR	X70
ER-49	1 HR	X70
ER-50	1 HR	X70
ER-51	1 HR	X70
ER-52	1 HR	X70
ER-53	1 HR	X70
ER-54	1 HR	X70
ER-55	1 HR	X70
ER-56	1 HR	X70
ER-57	1 HR	X70
ER-58	1 HR	X70
ER-59	1 HR	X70
ER-60	1 HR	X70
ER-61	1 HR	X70
ER-62	1 HR	X70
ER-63	1 HR	X70
ER-64	1 HR	X70
ER-65	1 HR	X70
ER-66	1 HR	X70
ER-67	1 HR	X70
ER-68	1 HR	X70
ER-69	1 HR	X70
ER-70	1 HR	X70
ER-71	1 HR	X70
ER-72	1 HR	X70
ER-73	1 HR	X70
ER-74	1 HR	X70
ER-75	1 HR	X70
ER-76	1 HR	X70
ER-77	1 HR	X70
ER-78	1 HR	X70
ER-79	1 HR	X70
ER-80	1 HR	X70
ER-81	1 HR	X70
ER-82	1 HR	X70
ER-83	1 HR	X70
ER-84	1 HR	X70
ER-85	1 HR	X70
ER-86	1 HR	X70
ER-87	1 HR	X70
ER-88	1 HR	X70
ER-89	1 HR	X70
ER-90	1 HR	X70
ER-91	1 HR	X70
ER-92	1 HR	X70
ER-93	1 HR	X70
ER-94	1 HR	X70
ER-95	1 HR	X70
ER-96	1 HR	X70
ER-97	1 HR	X70
ER-98	1 HR	X70
ER-99	1 HR	X70
ER-100	1 HR	X70