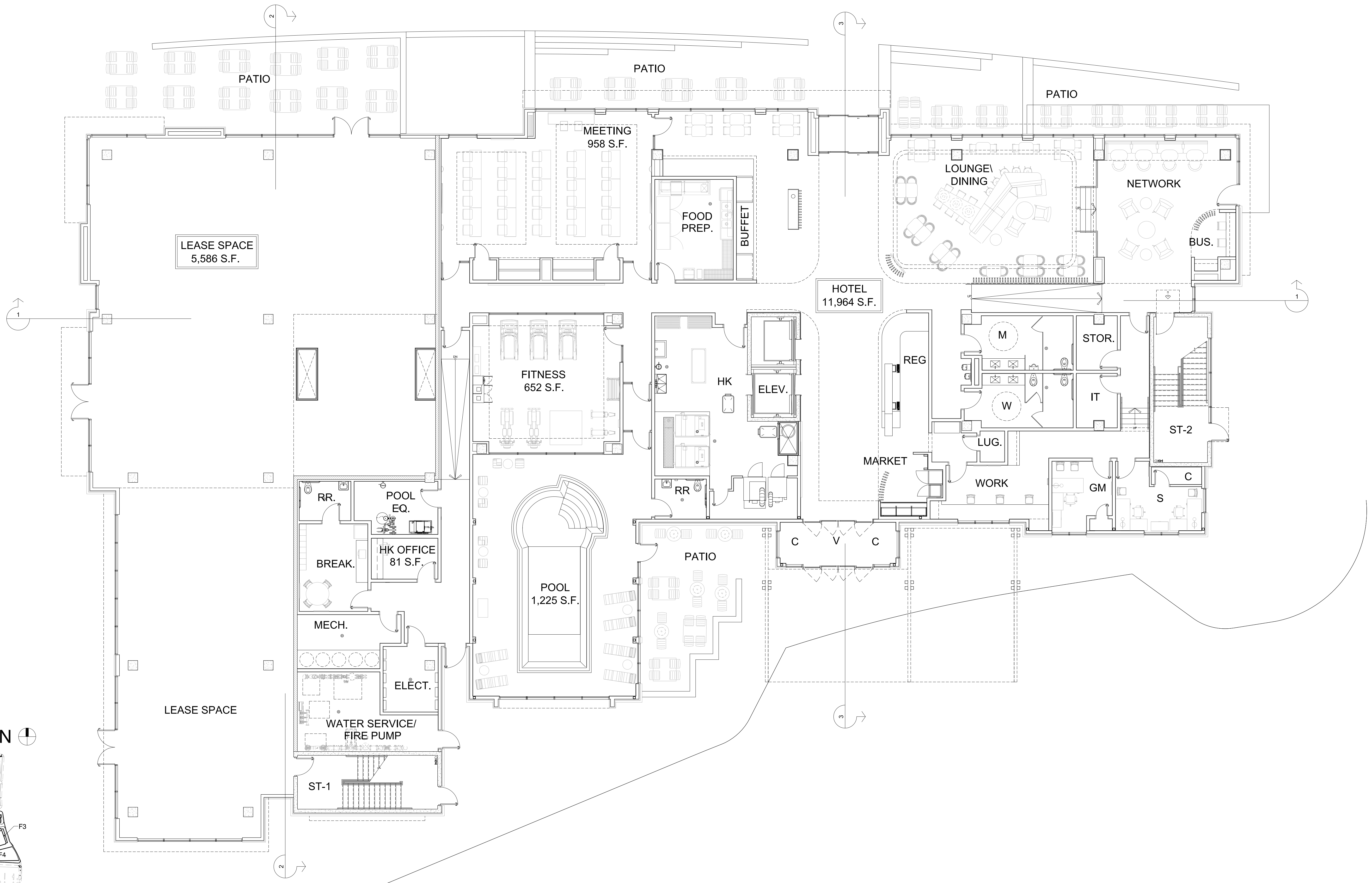


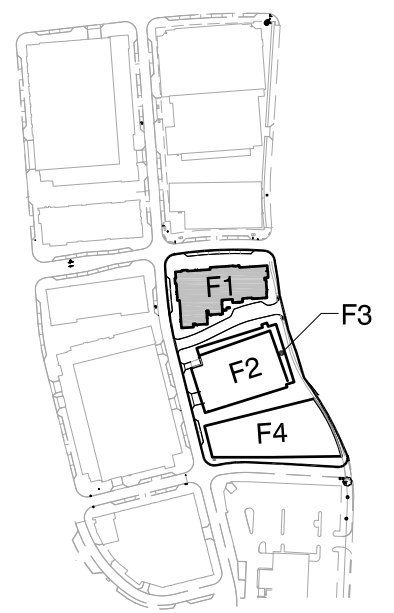
block f | **bridge park**  
basic site plan submittal | **september 12, 2018**

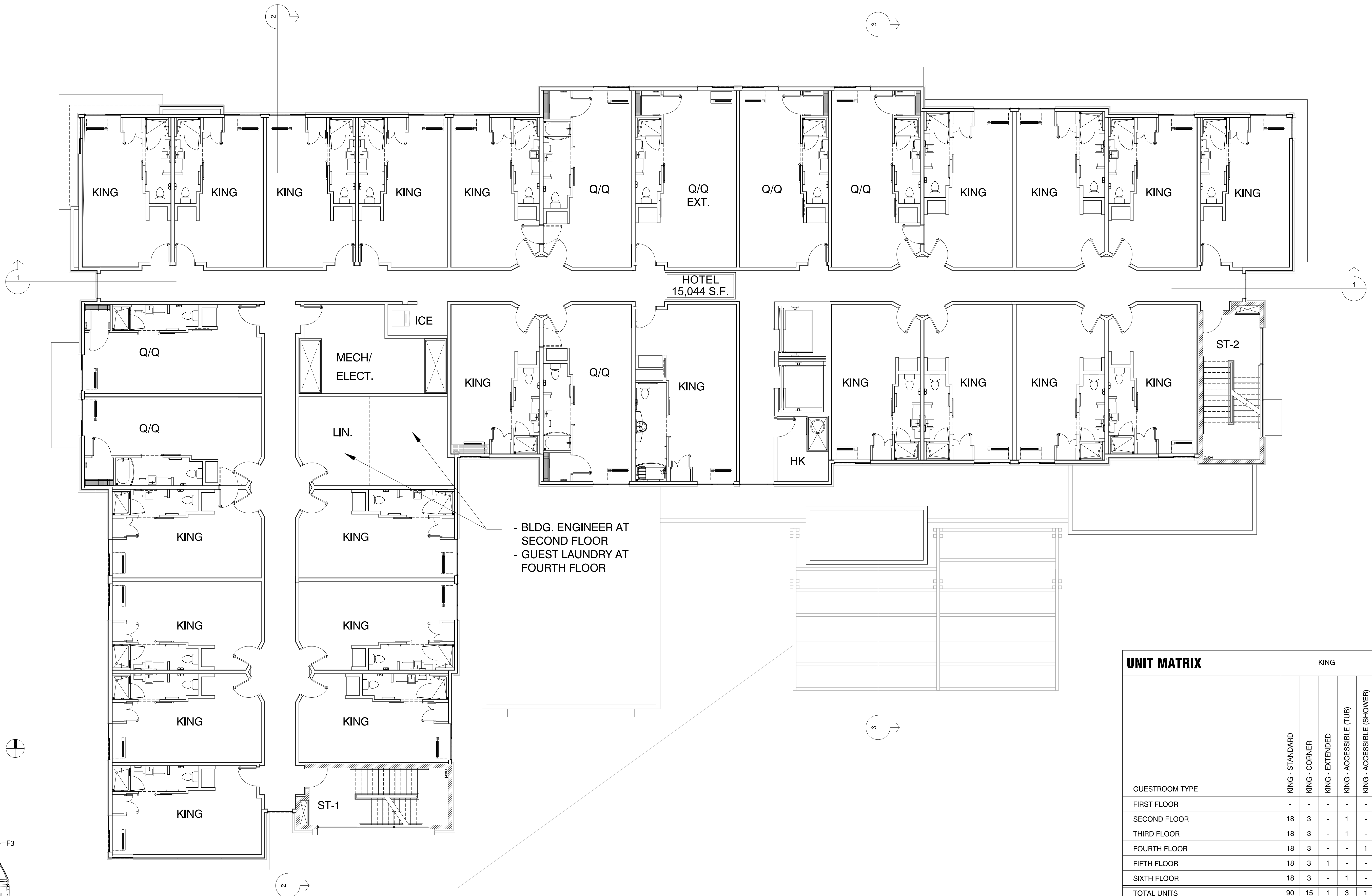




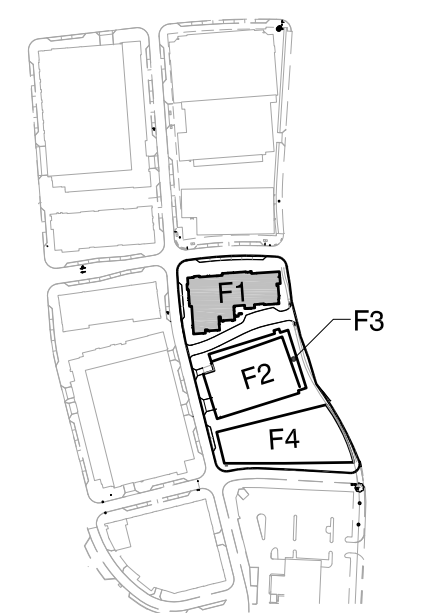


KEY PLAN





KEY PLAN



GUESTROOM TYPE	KING					QUEEN			
	KING - STANDARD	KING - CORNER	KING - EXTENDED	KING - ACCESSIBLE (TUB)	KING - ACCESSIBLE (SHOWER)	QUEEN - STANDARD	QUEEN - EXTENDED	QUEEN - ACCESSIBLE (TUB)	QUEEN - ACCESSIBLE (SHOWER)
FIRST FLOOR	-	-	-	-	-	-	-	-	-
SECOND FLOOR	18	3	-	1	-	6	1	-	-
THIRD FLOOR	18	3	-	1	-	6	-	1	-
FOURTH FLOOR	18	3	-	-	1	6	-	-	1
FIFTH FLOOR	18	3	1	-	-	6	-	1	-
SIXTH FLOOR	18	3	-	1	-	6	1	-	-
<b>TOTAL UNITS</b>	<b>90</b>	<b>15</b>	<b>1</b>	<b>3</b>	<b>1</b>	<b>30</b>	<b>2</b>	<b>2</b>	<b>1</b>
<b>RATIO</b>	<b>110</b>					<b>35</b>			
	<b>75%</b>					<b>25%</b>			





north elevation

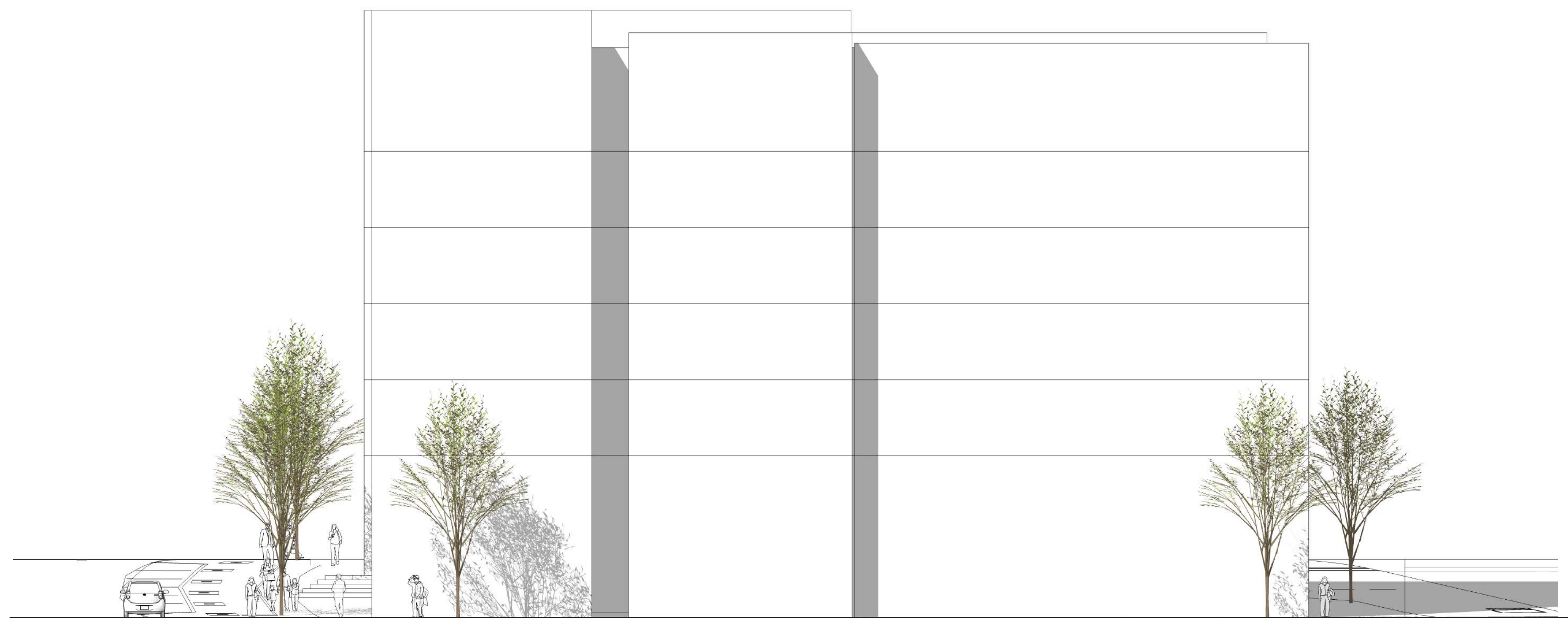


south elevation





east elevation

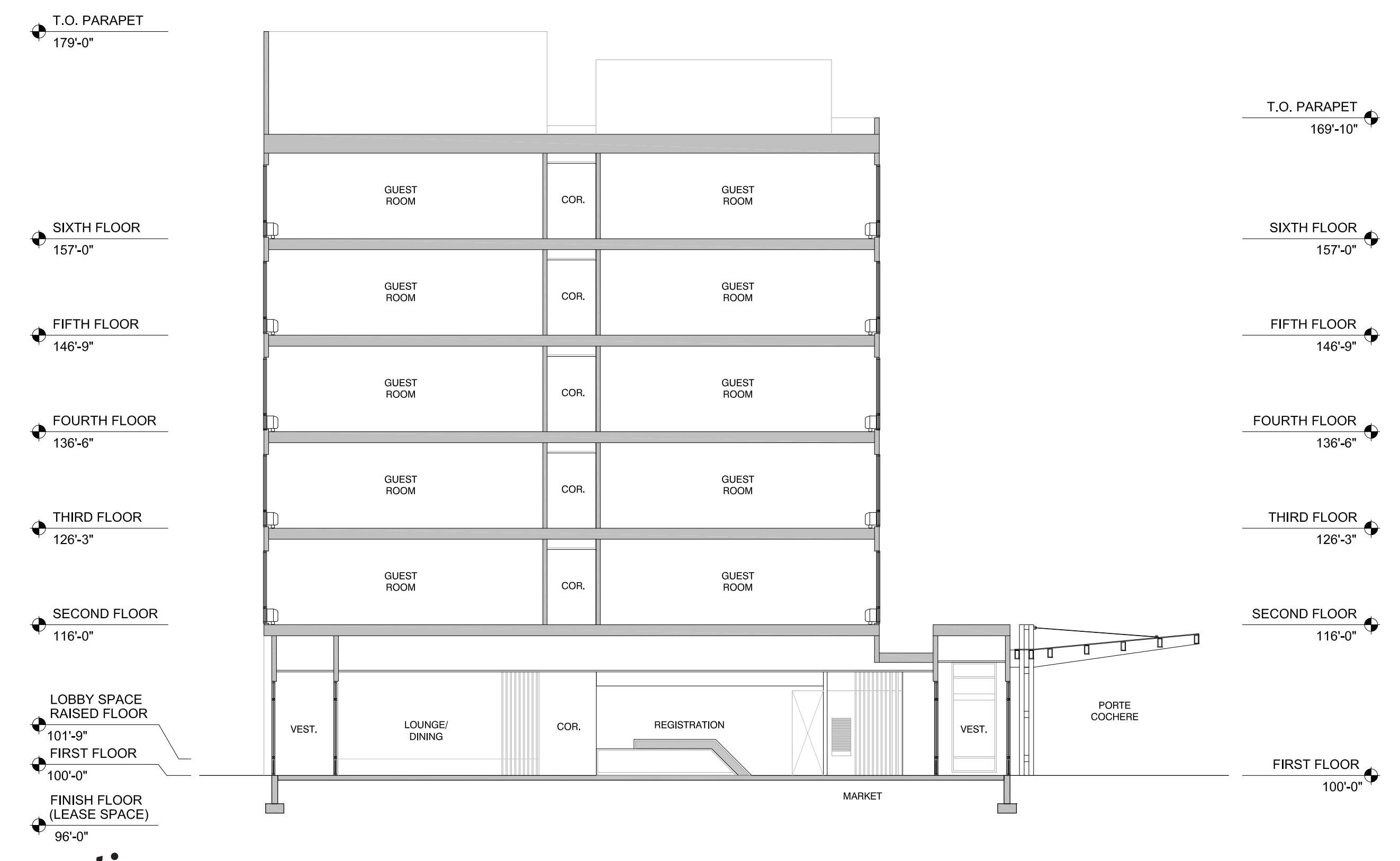


west elevation

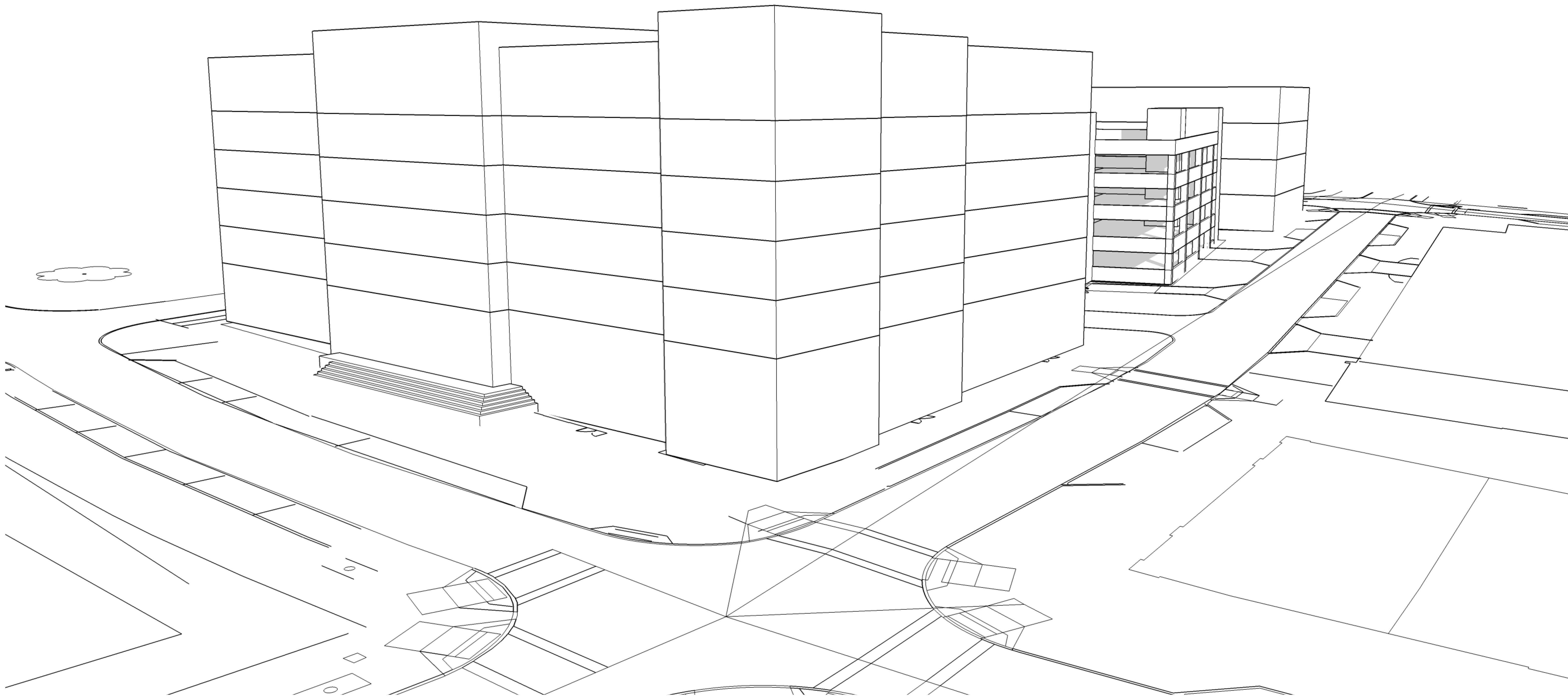




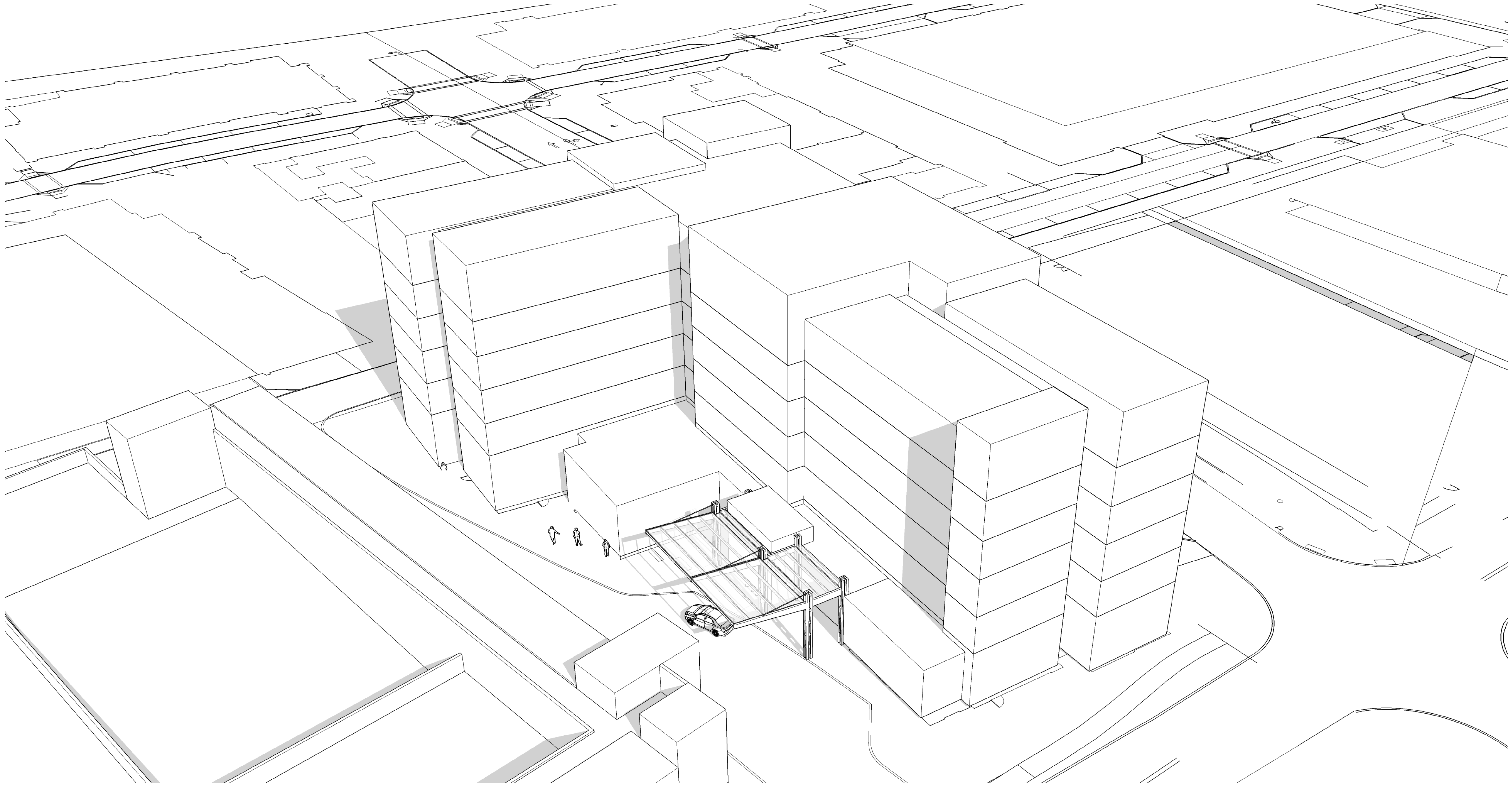
**section 1**



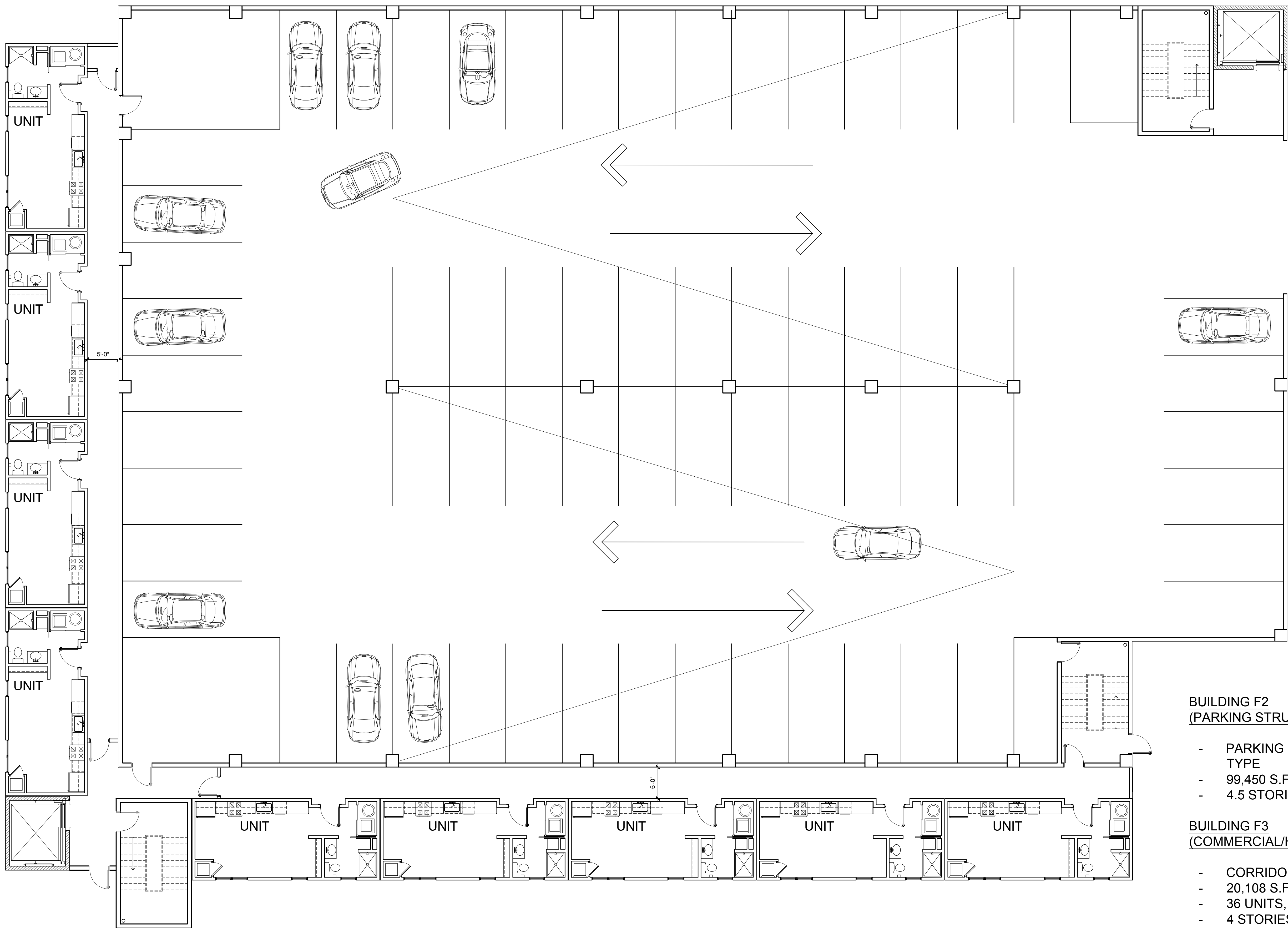
**section 2**



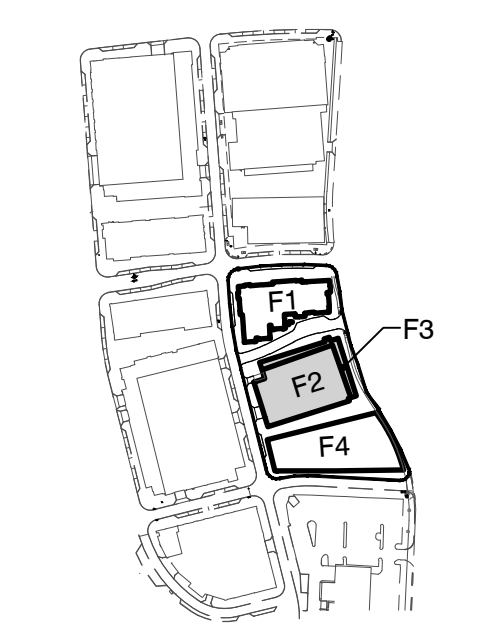








KEY PLAN



**BUILDING F2  
(PARKING STRUCTURE)**

- PARKING STRUCTURE BUILDING TYPE
- 99,450 S.F. TOTAL
- 4.5 STORIES, 52'-8" HT.

**BUILDING F3  
(COMMERCIAL/HOTEL)**

- CORRIDOR BUILDING TYPE
- 20,108 S.F. TOTAL
- 36 UNITS, 385 S.F. EACH
- 4 STORIES, 52'-8" HT.



