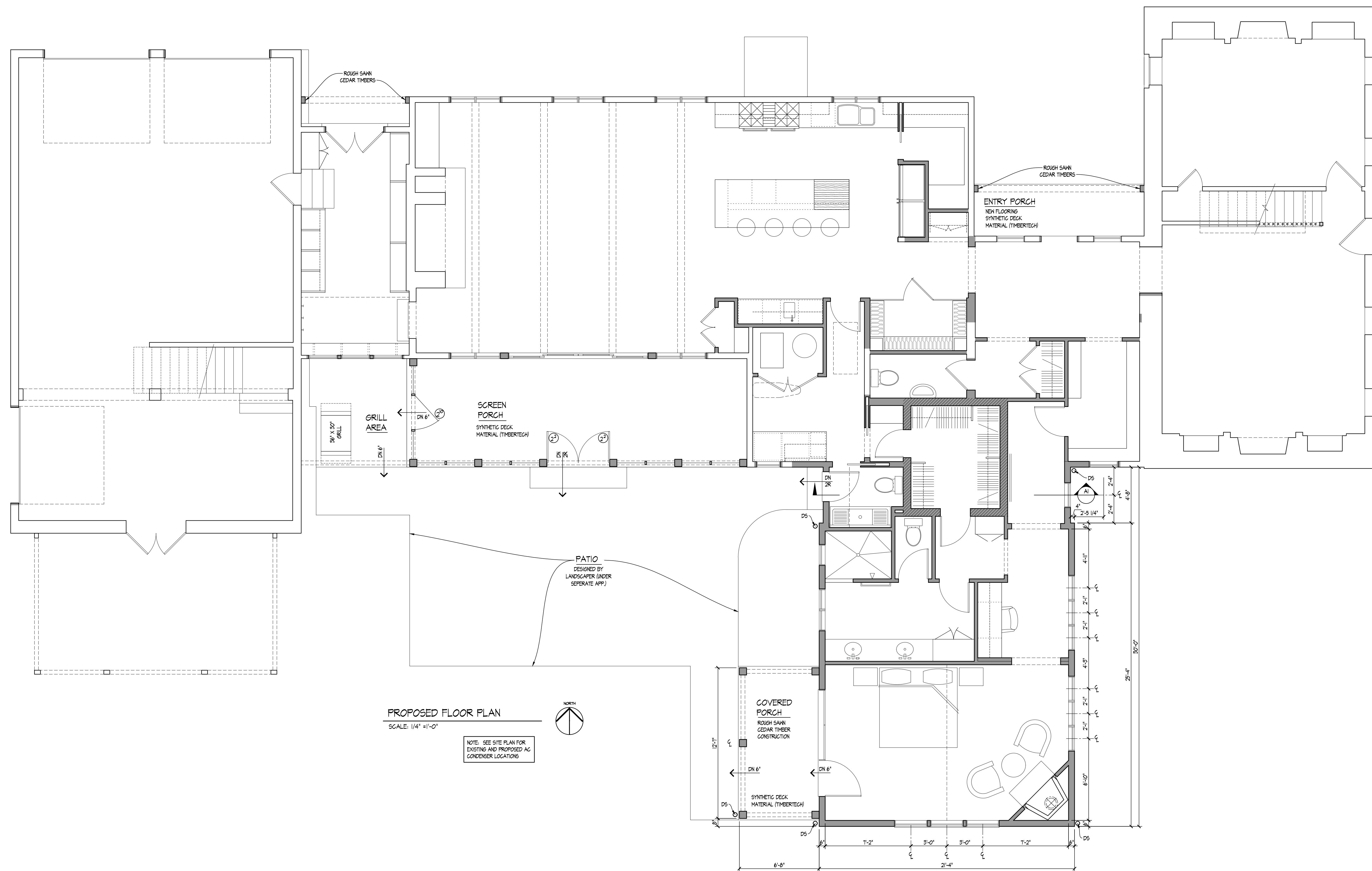


BUILDING ZONING INFORMATION	
PROPERTY ADDRESS:	104 S RIVERVIEW ST
PARCEL ID:	213-000060-00
ZONING:	BSD - HISTORIC RESIDENTIAL
HEIGHT DISTRICT:	35'
PROPOSED ADDITION HEIGHT:	14'
LOT AREA:	0.74 ACRES (32,071 SQ. FT.)
HISTORIC DISTRICT:	BSD - HISTORIC RESIDENTIAL
PROPERTY CLASS (PER AUDITOR):	R - RESIDENTIAL
LAND USE (PER AUDITOR):	R-910
EXISTING USE:	RESIDENTIAL
PROPOSED USE:	NO CHANGE
AREA DISTRICT LOT WIDTH REQ.:	60 FT.
FRONT YARD SETBACK:	20 FT.
TOTAL SIDE YARD:	12 FT.
MIN SIDE YARD:	5 FT.
REAR YARD:	15 FT.
LOT COVERAGE:	CANNOT EXCEED 50%
LOT COVERAGE CALCULATIONS	
EXISTING HOUSE:	4,281 SQ. FT.
PROPOSED ADDITION:	716 SQ. FT.
EXISTING DRIVE AND WALKS:	1,846 SQ. FT.
PROPOSED PATIO:	UNDER SEPERATE APP
TOTAL LOT COVERAGE:	6,846 SQ. FT. (21%)

PROPOSED SITE / ROOF PLAN  
 SCALE: 1" = 20'

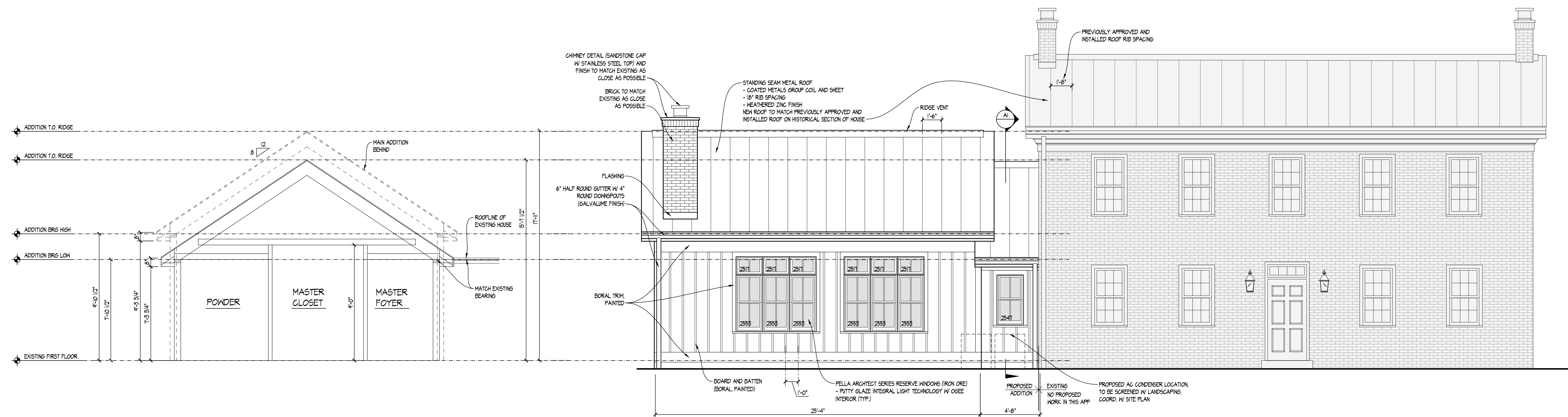




PROPOSED FLOOR PLAN  
 SCALE: 1/4" = 1'-0"



NOTE: SEE SITE PLAN FOR EXISTING AND PROPOSED AC CONDENSER LOCATIONS

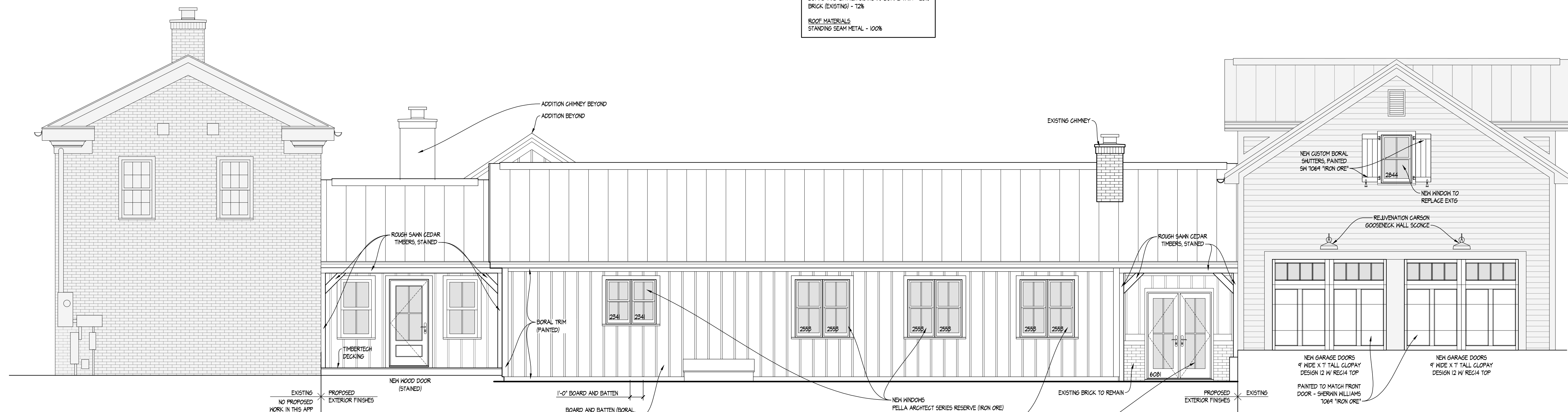


**A1** ADDITION CONNECTOR SECTION  
 SCALE: 1/4" = 1'-0"

**EAST ELEVATION**  
 SCALE: 1/4" = 1'-0"

**WALL MATERIALS**  
 BOARD AND BATTEN SIDING W/ BORAL TRIM - 28%  
 BRICK (EXISTING) - 72%

**ROOF MATERIALS**  
 STANDING SEAM METAL - 100%



**NORTH ELEVATION**  
 SCALE: 1/4" = 1'-0"

**WALL MATERIALS**  
 BOARD AND BATTEN SIDING W/ BORAL TRIM - 38%  
 BRICK (EXISTING) - 35%  
 HOOD SIDING W/ HOOD TRIM (EXISTING) - 27%

**ROOF MATERIALS**  
 STANDING SEAM METAL - 100%

**OVERALL BUILDING MATERIALS PERCENTAGES**

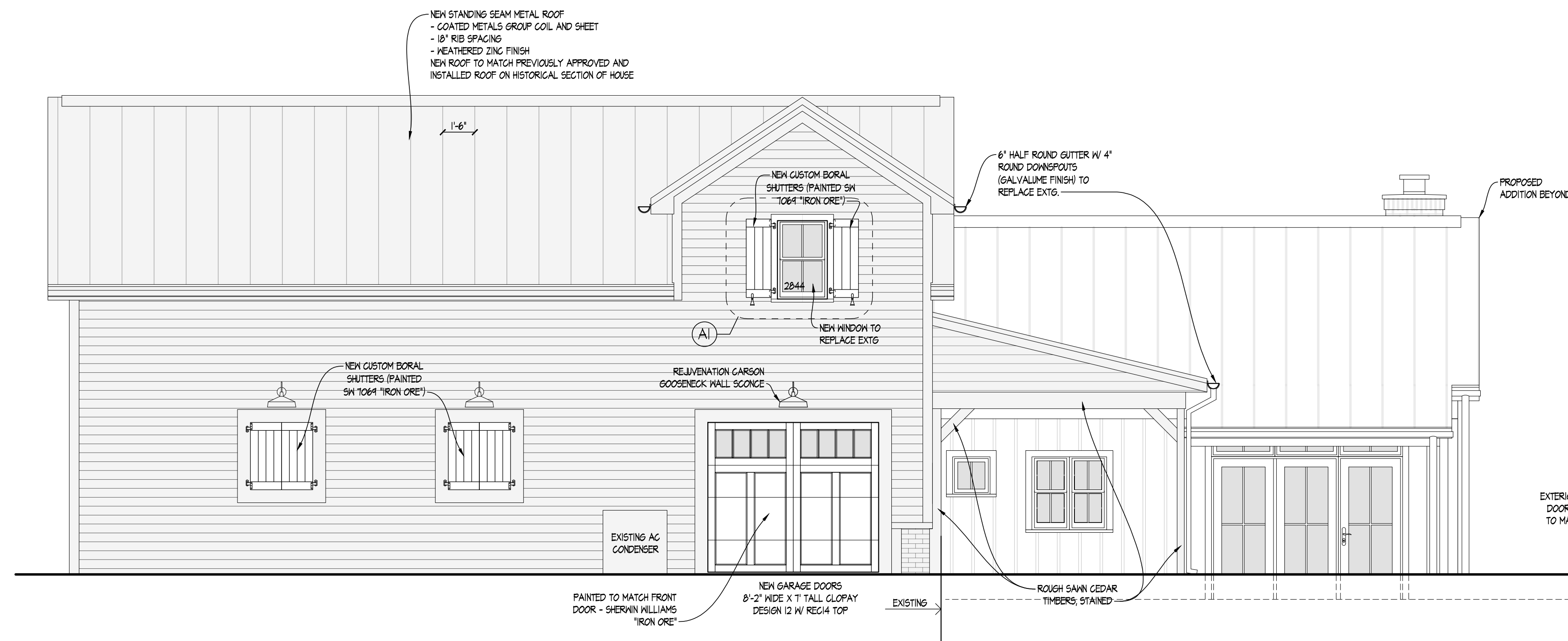
**WALL MATERIALS**  
 BOARD AND BATTEN SIDING W/ BORAL TRIM - 31%  
 BRICK (EXISTING) - 39%  
 HOOD SIDING W/ HOOD TRIM (EXISTING) - 24%  
 HOOD TRIM W/ SCREENS - 5%

**ROOF MATERIALS**  
 STANDING SEAM METAL - 100%

DUBLIN ARB DRAWINGS FOR THE  
**SCHMITT RESIDENCE**

109 S. RIVERVIEW STREET  
 DUBLIN, OHIO 43017

10.30.18

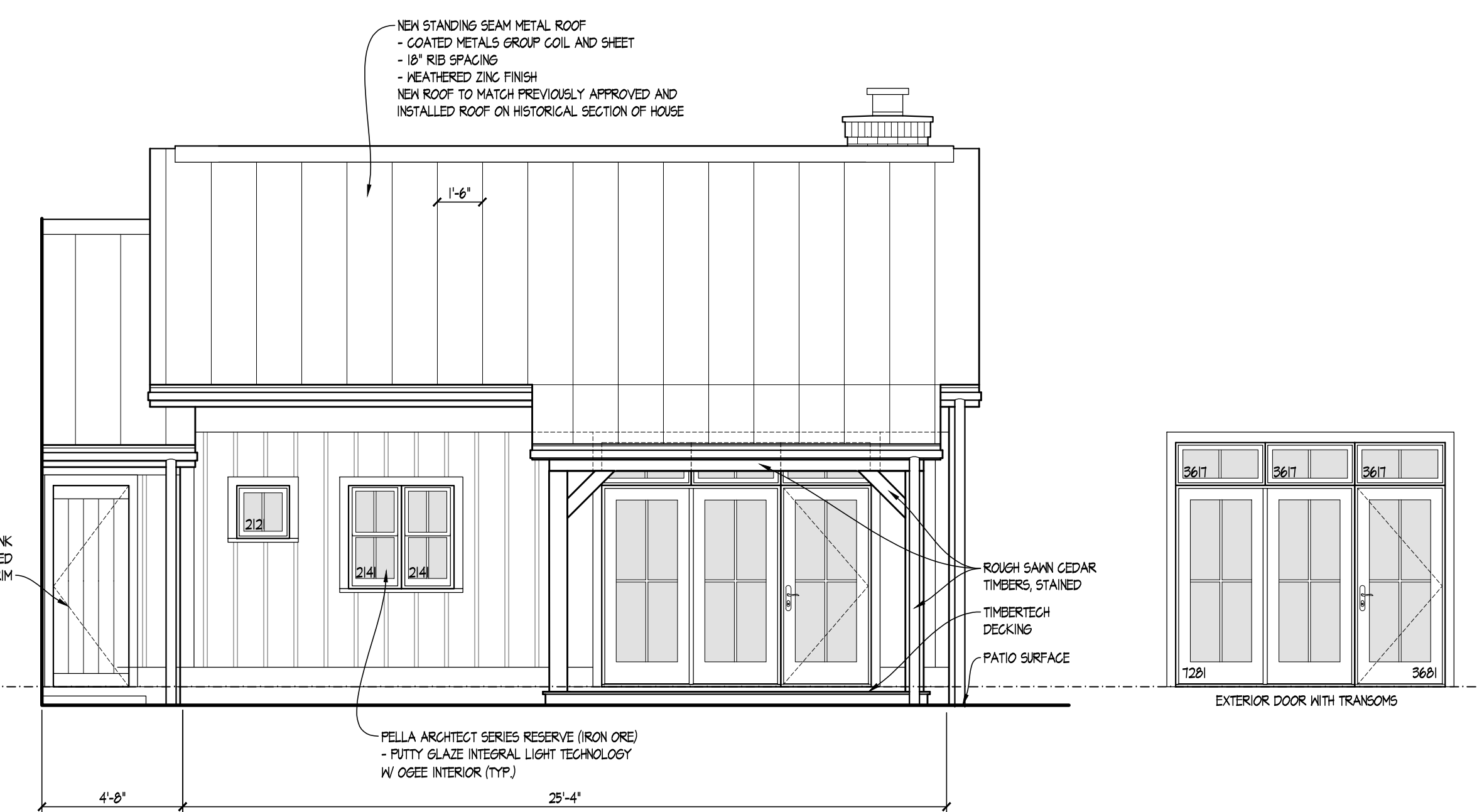


WEST ELEVATION @ GARAGE

SCALE: 1/4" = 1'-0"

**WALL MATERIALS**  
 BOARD AND BATTEN SIDING W/ BORAL TRIM - 25%  
 WOOD SIDING W/ WOOD TRIM (EXISTING) - 75%

**ROOF MATERIALS**  
 STANDING SEAM METAL - 100%

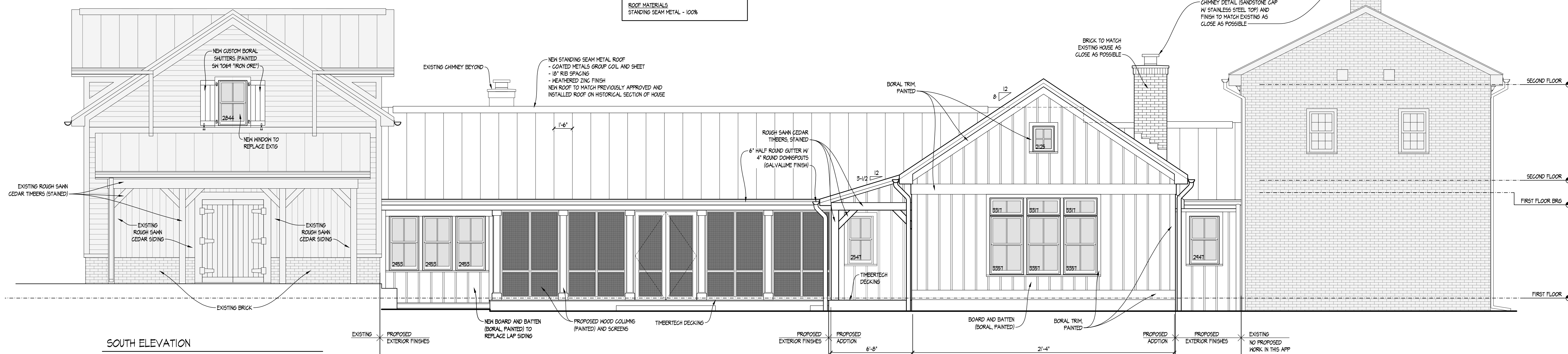


WEST ELEVATION @ ADDITION

SCALE: 1/4" = 1'-0"

MASTER BR EXTERIOR DOORS

SCALE: 1/4" = 1'-0"

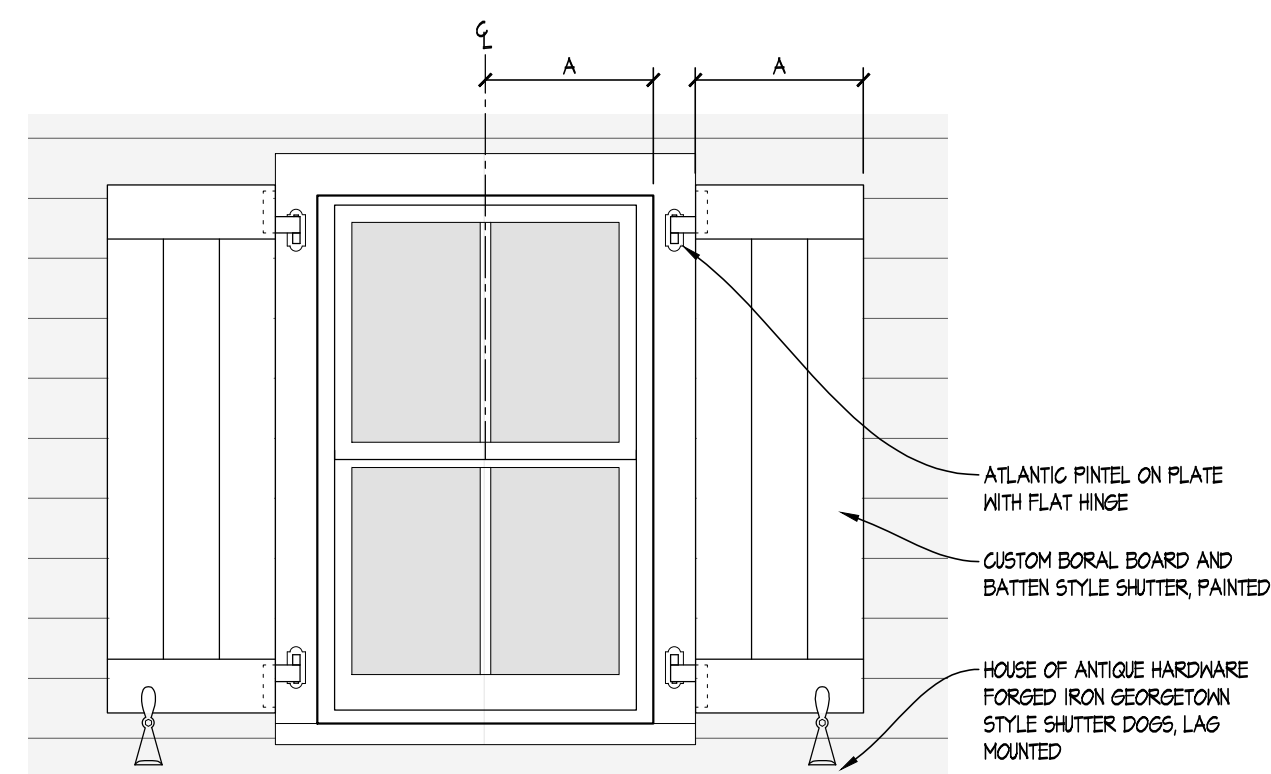


SOUTH ELEVATION

SCALE: 1/4" = 1'-0"

**WALL MATERIALS**  
 BOARD AND BATTEN SIDING W/ BORAL TRIM - 5%  
 BRICK (EXISTING) - 35%  
 WOOD SIDING W/ WOOD TRIM (EXISTING) - 2%  
 WOOD TRIM W/ SCREENS - 15%

**ROOF MATERIALS**  
 STANDING SEAM METAL - 100%



AI SHUTTER DETAIL ELEVATION

SCALE: 3/4" = 1'-0"

**OVERALL BUILDING MATERIALS PERCENTAGES**

**WALL MATERIALS**  
 BOARD AND BATTEN SIDING W/ BORAL TRIM - 5%  
 BRICK (EXISTING) - 35%  
 WOOD SIDING W/ WOOD TRIM (EXISTING) - 2%  
 WOOD TRIM W/ SCREENS - 5%

**ROOF MATERIALS**  
 STANDING SEAM METAL - 100%

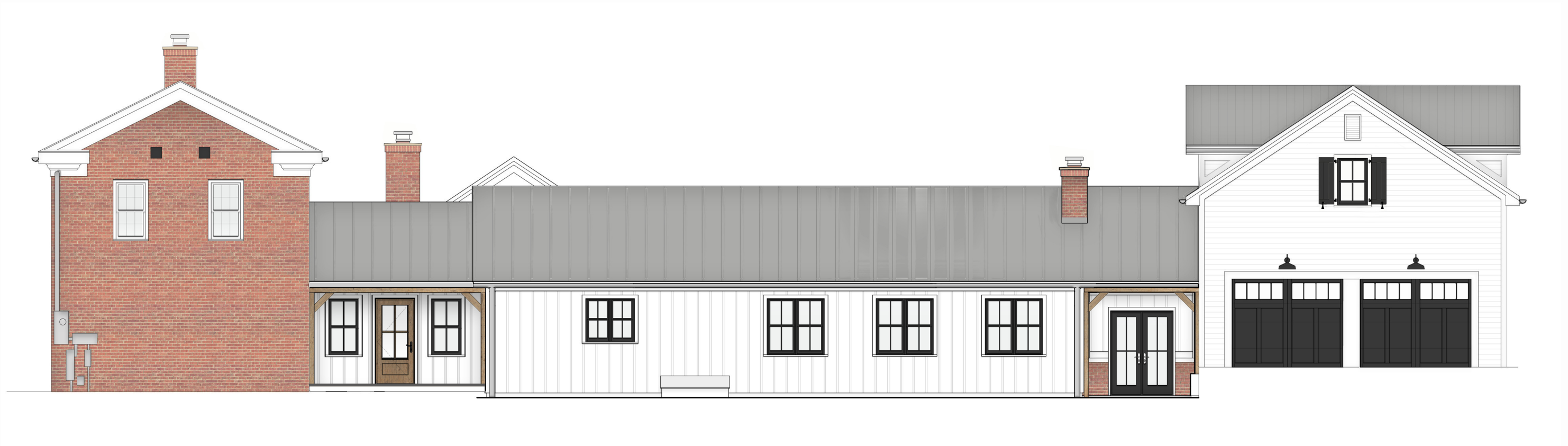
DUBLIN ARB DRAWINGS FOR THE  
 SCHMITT RESIDENCE

109 S. RIVERVIEW STREET  
 DUBLIN, OHIO 43017

10.30.18



**WEATHERED ZINC ROOF**  
**IRON ORE ON WHITE SCHEME**



**WEATHERED ZINC ROOF**  
**IRON ORE ON WHITE SCHEME**



**WEATHERED ZINC ROOF**  
**IRON ORE ON WHITE SCHEME**



# Coil and Sheet

## **COATED METALS GROUP**

- \* 18" RIB SPACING
- \* DOUBLE LOCKED
- \* WEATHERED ZINC FINISH

All materials are proudly  
sourced and manufactured  
in the USA

Coated Metals Group is a leading manufacturer of pre-painted coil and flat sheet to the building construction industry. Coils are processed to the customer's precise specifications, including custom widths and exact lineal footages.

Matching flat sheets are available in a standard 4'x10' dimension, or processed to specified sizes upon special request. Protective strippable film can be applied to coils or sheets for protection during fabrication.

All products are produced from tension leveled, extra smooth substrate in a wide variety of gauges, paint finishes and colors. In addition to our standard colors, we also have the capability to custom color match virtually any request.



# Color Selection Guide



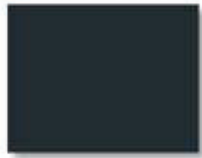
**ULTRA-CLAD™** with **COOL** technology.

Cool coating with premium heat-reflective technology from Dura Coat.

KYNAR 500 or HYLAR 5000 Pre-Finished Steel & Aluminum Flat Sheets & Coil.



Deep Black



Matte Black



Charcoal Gray



Musket Gray



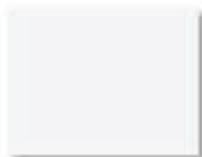
Slate Gray



Ash Gray



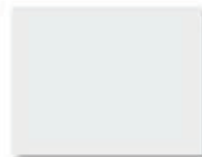
Almond



Bright White



Bone White



Stone White



Cityscape



Pebble Clay



Sandstone



Sierra Tan



Medium Bronze



Mansard Brown



Burnished Slate



Dark Bronze



Harford Green



Classic Green



Hemlock Green



Teal



Slate Blue



Royal Blue



Regal Red



Colonial Red



Burgundy



Terra Cotta



Galvalume Plus



\* Vintage



\* Western Rust



\* Copper Penny



\* Weathered Zinc



\* Silver



\* Champagne



\* Aged Copper

\*Premium Color

Colors represented on this electronic chart may not exactly match actual material. All colors should be verified using actual metal samples. Mismatch of electronic color representations and actual material shall not be accepted as a cause for rejection.

# GUTTERS AND DOWNSPOUTS



6" HALF ROUND GUTTER - GALVALUME FINISH



GEM CIRCLE HANGER @  
24" O.C. SPACING



4" ROUND DOWNSPOUT - GALVALUME FINISH

# Trim

## About Boral TruExterior® Trim

Designed to be used in non-load-bearing applications, Boral TruExterior® Trim is suitable for ground contact and moisture-prone areas, which makes it ideal for exterior trim applications such as fascia, door trim, soffits, rake boards and a variety of other exterior applications. Because of its high level of dimensional stability<sup>†</sup>, there is no need to prime ends or field cuts. Plus, it can be painted any color. Boral TruExterior® Trim accepts a wide variety of fasteners and can be installed using standard woodworking tools and methods.

All images below depict Boral TruExterior® Trim





Boral TruExterior® Trim

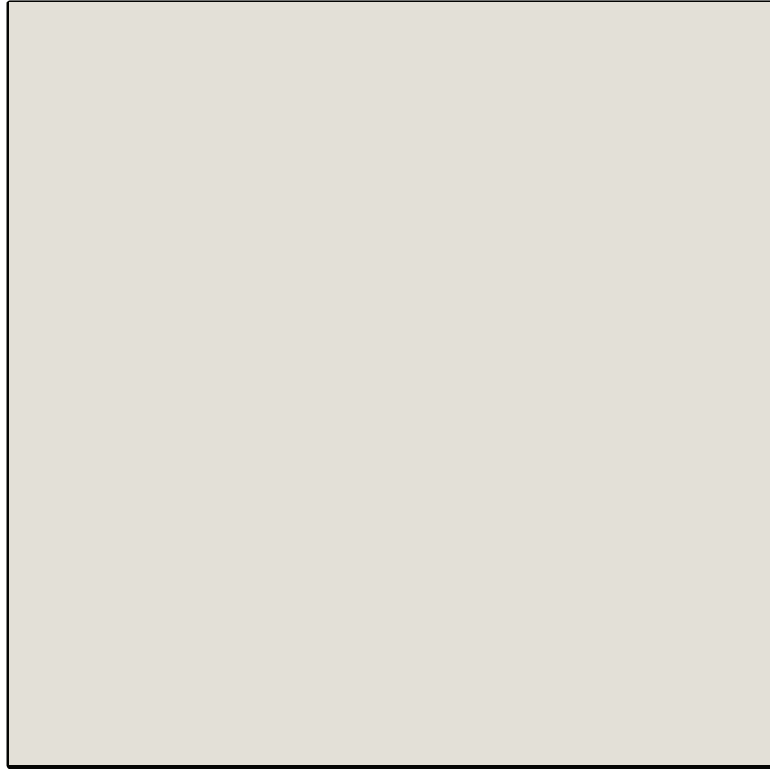
5/8 Trim Sizes		1X Trim Sizes		5/4 Trim Sizes		2X Trim Sizes	
Nominal	Actual	Nominal	Actual	Nominal	Actual	Nominal	Actual
—	—	—	—	—	—	2 x 2	1 1/2" x 1 1/2"
—	—	1 x 3	3/4" x 2 1/2"	5/4 x 3	1" x 2 1/2"	—	—
5/8 x 4	5/8" x 3 1/2"	1 x 4	3/4" x 3 1/2"	5/4 x 4	1" x 3 1/2"	2 x 4	1 1/2" x 3 1/2"
—	—	1 x 5	3/4" x 4 1/2"	5/4 x 5	1" x 4 1/2"	—	—
5/8 x 6	5/8" x 5 1/2"	1 x 6	3/4" x 5 1/2"	5/4 x 6	1" x 5 1/2"	2 x 6	1 1/2" x 5 1/2"
5/8 x 8	5/8" x 7 1/4"	1 x 8	3/4" x 7 1/4"	5/4 x 8	1" x 7 1/4"	2 x 8	1 1/2" x 7 1/4"
5/8 x 10	5/8" x 9 1/4"	1 x 10	3/4" x 9 1/4"	5/4 x 10	1" x 9 1/4"	2 x 10	1 1/2" x 9 1/4"
5/8 x 12	5/8" x 11 1/4"	1 x 12	3/4" x 11 1/4"	5/4 x 12	1" x 11 1/4"	2 x 12	1 1/2" x 11 1/4"

Boral TruExterior® Trim is reversible with wood grain on one side and a smooth finish on the reverse. 16' lengths are available in all sizes with 12' and 20' lengths available in 4/4, 5/4 and 2x Trim.

Available Finishes:  
(Reversible)



# EXTERIOR PAINT COLORS



SHERWIN WILLIAMS #6168 - MODERNE WHITE  
BORAL SIDING AND TRIM



SHERWIN WILLIAMS #7069 - IRON ORE  
GARAGE DOORS AND SHUTTERS



WOOD

# Architect Series® Reserve™

\$\$\$\$-\$\$\$\$\$



Architect Series Reserve  
double-hung window

## FEATURES

- Historically accurate wood products with detailed craftsmanship
- Exceptional durability with extruded aluminum cladding
- Virtually endless customization with shapes, sizes and colors

## WINDOW STYLES

Special shapes, custom sizes and fixed configurations are also available.



AWNING



BAY OR BOW



CASEMENT



DOUBLE-HUNG



SINGLE-HUNG

## PATIO DOOR STYLES



SLIDING



HINGED



# Colors & Finishes ARCHITECT SERIES® RESERVE™

## WOOD TYPES

Choose the wood species that best complements your home's interior. White oak, red oak, cherry and maple are available as custom solutions.



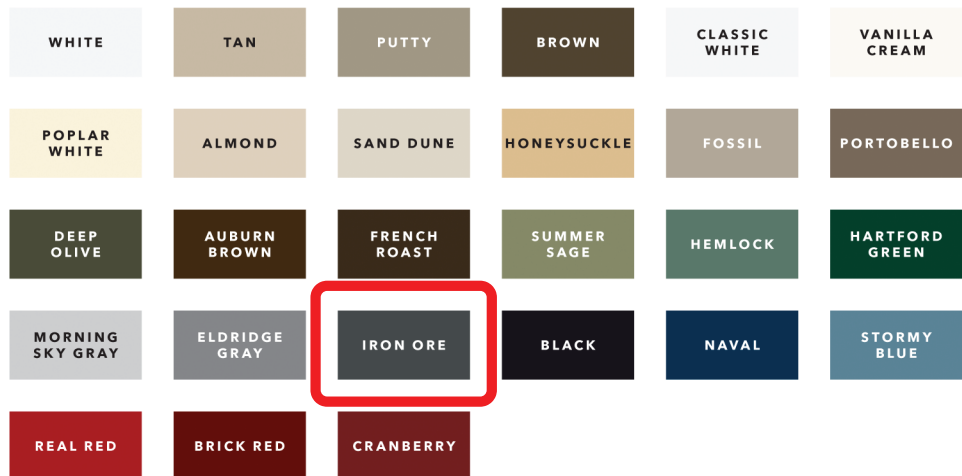
## PREFINISHED PINE INTERIOR COLORS

When you select pine, we can prefinish in your choice of seven stains or three paint colors. Unfinished or primed and ready-to-paint are also available.



## ALUMINUM-CLAD EXTERIOR COLORS

Our low-maintenance EnduraClad® exterior finish resists fading. Take durability one step further with EnduraClad Plus which also resists chalking and corrosion.<sup>1</sup> Custom colors are also available.



## ANODIZED EXTERIOR FINISHES

Choose a premium matte look with a decorative, durable exterior. Custom champagne, medium bronze, extra dark bronze and copper anodized finishes are also available.



<sup>1</sup> EnduraClad Plus protective finish is not available with all colors. See your local Pella sales representative for availability.

# Grilles ARCHITECT SERIES® RESERVE™

## GRILLES

Choose the look of true divided light, removable roomside grilles or make cleaning easier by selecting grilles-between-the-glass.



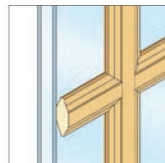
**PUTTY GLAZE INTEGRAL LIGHT TECHNOLOGY<sup>1</sup> WITH OGEE INTERIOR<sup>1</sup>**  
5/8", 7/8" OR 1-1/4"



**OGEE INTEGRAL LIGHT TECHNOLOGY WITH OGEE INTERIOR<sup>1</sup>**  
7/8", 1-1/4" OR 2"



**ALUMINUM GRILLES-BETWEEN-THE-GLASS**  
3/4"



**ROOMSIDE REMOVABLE GRILLES<sup>1</sup>**  
3/4", 1-1/4" OR 2"

### GRILLES-BETWEEN-THE-GLASS INTERIOR COLORS:<sup>2</sup>

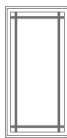


## GRILLE PATTERNS

In addition to the patterns shown here, custom grille patterns are available.



**TRADITIONAL**



**9-LITE PRAIRIE**



**12-LITE PRAIRIE**



**14-LITE PRAIRIE**



**VICTORIAN**



**TOP ROW**



**CROSS**



**NEW ENGLAND**



**DIAMOND**



**SIMULATED FRENCH**



**CUSTOM**



**SUNBURST<sup>4</sup>**



**STARBURST<sup>4</sup>**



**SCALLOPS<sup>4</sup>**



**PRAIRIE**

<sup>1</sup> Color-matched to your product's interior and exterior color.

<sup>2</sup> Appearance of exterior grille color may vary depending on the Low-E insulating glass selection.

<sup>3</sup> Only available with matching interior and exterior colors.

<sup>4</sup> Only available with a curved product or curved glass.





[Return to Patio Doors Overview \(/doors\)](#)

## Architect Series® Reserve In-Swing Hinged Patio Door

### Downloads

**2D Cross Section**     
(Aluminum-Clad Wood)

**2D Elevation**     
(Aluminum-Clad Wood)

**3D & BIM**   
(Aluminum-Clad Wood)

**3D & BIM**   
(Aluminum-Clad Wood)

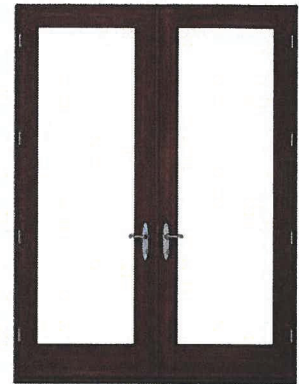
**Specifications**   
(Aluminum-Clad Wood)

- Available in three wood types: Pine, Mahogany, and Douglas Fir.
- Configured as single- or double-panel doors with available sidelights and transoms.
- Operable sizes up to 9' 11-1/2" x 8' for double doors.
- Putty Glaze sash profile available with matching grilles.
- Exclusive hardware styles in 12 finishes.
- Exceptional energy efficiency.

A local Pella team member is ready to help you with your project.

**Get A Quote**  
(<http://info.pella.com/ProPellaContactUsQuote>)

[Custom Door Solutions \(/doors/product-details/custom-reserve\)](#) [Installation Guides \(http://www.installpella.com\)](#) [Warranty Info \(/warranties\)](#)



Find potential **LEED credits** for this project ([/support/lead](#)) ([/support/lead](#))

[Order Pella Replacement Parts Online »](#)

([http://parts.pella.com/OA\\_HTML/ibeCZzpHc\\_sitex=10040](http://parts.pella.com/OA_HTML/ibeCZzpHc_sitex=10040))

- Window Parts
- Patio Door Parts
- Supplies

### Features & Options

[Sizes and Shapes](#)

[Performance Values](#)

[Wood Types](#)

[Interior Finishes](#)

[Exterior Finishes](#)

[Glazing](#)

[Impact Resistant](#)

[Grilles](#)

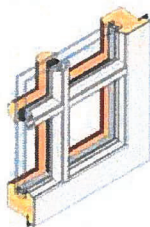
[Hardware](#)

[Screens](#)

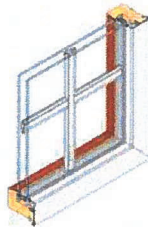
### Grilles – Architect Series Reserve In-Swing Hinged Patio Door

Three grille types are available on Architect Series in-swing hinged patio doors.

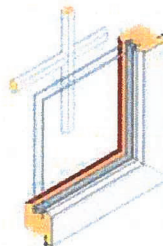
- **Integral Light Technology® Grilles** are historically accurate; adhered to the exterior and interior face.
- **Grilles-between-the-glass** are permanent aluminum grilles that are factory installed between the panes of glass to provide easy cleaning.
- **Removable Interior grilles** can be removed for glass cleaning.



Integral Light Technology® Grilles



Grilles-between-the-glass



Removable Interior Grilles

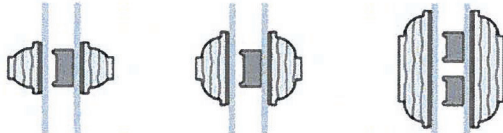
### Integral Light Technology® (ILT) Grilles

- Combine the historical look of true divided lights with today's energy efficiency, structural integrity and water-resistant performance.
- Grilles are adhered to the outside of the glass – wood on the interior and aluminum on the exterior.

- Between-the-glass nonglare foam spacers, which are aligned with the interior and exterior grilles, replicate the appearance of true divided lights – and offer thermal performance vastly superior to metal spacers.
- Grilles have been approved the National Park Service on a project-by-project basis for use on historic projects involving federal tax credits.



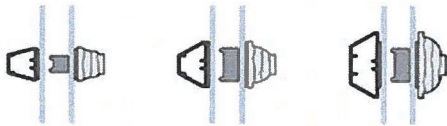
Ogee Grilles  
Clad Exterior,  
Wood Interior  
7/8", 1 1/4",  
and 2" widths  
Triple-Pane  
Glass



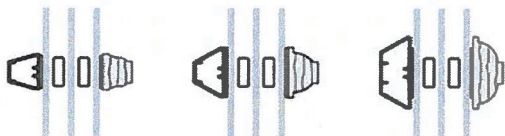
Ogee Grilles  
Wood  
Exterior,  
Wood Interior  
7/8", 1 1/4",  
and 2" widths



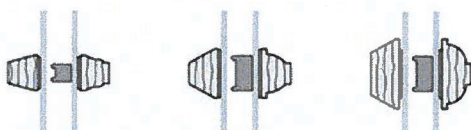
Ogee Grilles  
Wood  
Exterior,  
Wood Interior  
7/8", 1 1/4",  
and 2" widths  
Triple-Pane  
Glass



Putty Glaze  
and Ogee  
Grilles Clad  
Exterior,  
Wood Interior  
5/8", 7/8",  
and 1 1/4"  
widths



Putty Glaze  
and Ogee  
Grilles Clad  
Exterior,  
Wood Interior  
5/8", 7/8",  
and 1 1/4"  
widths Triple-  
Pane Glass



# COACHMAN<sup>®</sup>

collection

4-LAYER CONSTRUCTION



America's Favorite Garage Doors<sup>®</sup>



*Model CGU/CG/GD12 with ARCH3 Windows.  
Shown with Sandtone Steel Base  
and Standard White Composite Overlays;  
Standard Spade Handles and Step Plates.*

Model CGU/CG/CD13 with REC14 Windows.  
 Shown with Standard White Steel Base  
 and Standard White Composite Overlays;  
 Standard Spade Handles and Step Plates.

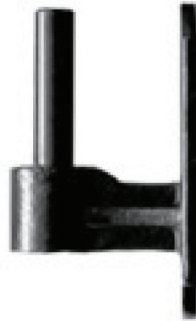
# Series ONE

SERIES ONE of the Coachman® Collection proves that in simplicity, there is sophistication. Architectural home designs such as Mission, Shaker, Country and Prairie look beautiful with the understated elegance of this classic look. Your choice of rectangular, square, arched windows or a solid top section provides that finishing touch.

## SERIES ONE DESIGNS

	TOP11 (Solid)	TOP12 (Solid)	TOP13 (Solid)	ARCH1 (Solid)	ARCH1 Window	ARCH3 Window	ARCH4 Window	ARCH13 Window	ARCH14 Window	SQ23 Window	SQ24 Window	REC11 Window	REC13 Window	REC14 Window
CGU CG CD 11														
CGU CG CD 12														
CGU CG CD 13														

## TRADITIONAL HARDWARE



### **Pintel on Plate**

- Sold in pairs
- Pintel plate size - 1-1/2" x 3-1/2" x 1/8"  
Pin diameter - 3/8"
- Stainless steel with a matte black powder coat finish
- Offsets: 1/2", 1-1/2", 2-1/4", 3-1/2"



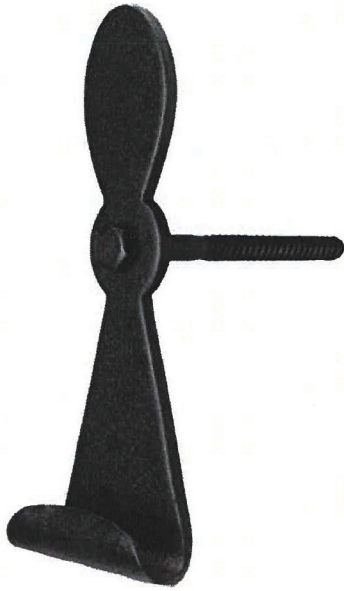
### **Flat Hinge**

- Sold in pairs
- Stainless Steel with a matte black powder coat finish
- Offsets: 0", 1/2", 1-1/2", 2-1/4"



www.HouseofAntiqueHardware.com (888) 223-2545 9:00 am - 8:30 pm M-F, Eastern

### PAIR OF LARGE FORGED IRON GEORGETOWN STYLE SHUTTER DOGS - LAG MOUNTED



#### Features

- Hand Forged Iron for Authentic Appearance
- Authentic Colonial-Era Design
- Enhances Historic Look and Feel
- Complete Set for One Window
- Galvanized and Powder Coated to Resist Rust

#### Details

Style	Colonial
Item Sold As	Pair
Included Hardware	All necessary mounting accessories
Usually Ships In	1 to 2 Business Days <a href="#">More info &gt;</a>
Warranty	5 Year Warranty

5 2 Reviews Write a Review

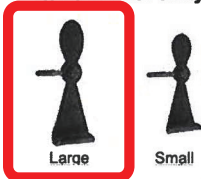
100% of respondents would recommend this to a friend

[Read Product Questions & Answers](#)

Item #: R-09JW-267

Price: \$26.79

#### Items in This Family:



This item is part of...

WILLIAMSBURG PERIOD HOME COLLECTION >>

[See All Period Home Collections](#)

#### Description & Dimensions

Popular throughout the Mid-Atlantic, these Georgetown style shutter dogs are distinguished by their artful curl. Hand-forged from heavy duty iron, they're powder coated to resist rust. Easily mounted to masonry with the included lag bolt (anchors recommended - not included).

Dimensions. Tie back: 6 1/2" H x 2 1/4" W x 1" projection (at curl). Bolt: 4" L x 5/16".

#### Instructions & Documentation

[Shutter Hardware Details](#)

How to install this product in a typical situation.

# REJUVENATION



## Carson Gooseneck Wall Sconce

Item #A2949

<https://www.rejuvenation.com/s/4zit>

Specification	Detail
Item #	A2949
Web Configuration ID	59473d12bbddb4f31ee9f21
Finish	Carbon
Socket Type	Incandescent
Projection	18 inches wall to center socket
Selected Shade(s)	B1700 GX 20 in
Wire Bulb Guard	None
Max Wattage Per Socket	300 W
UL Listed	UL Listed Wet
Canopy Width	5"
Overall Width	20.01"
Overall Length	22.79"
Overall Projection	28.005"
Shade Height	9"

**Base price: \$299.00**

**Selected options total: \$200.00**

**Total price as shown\* : \$499.00**

\*Shipping and handling fees apply