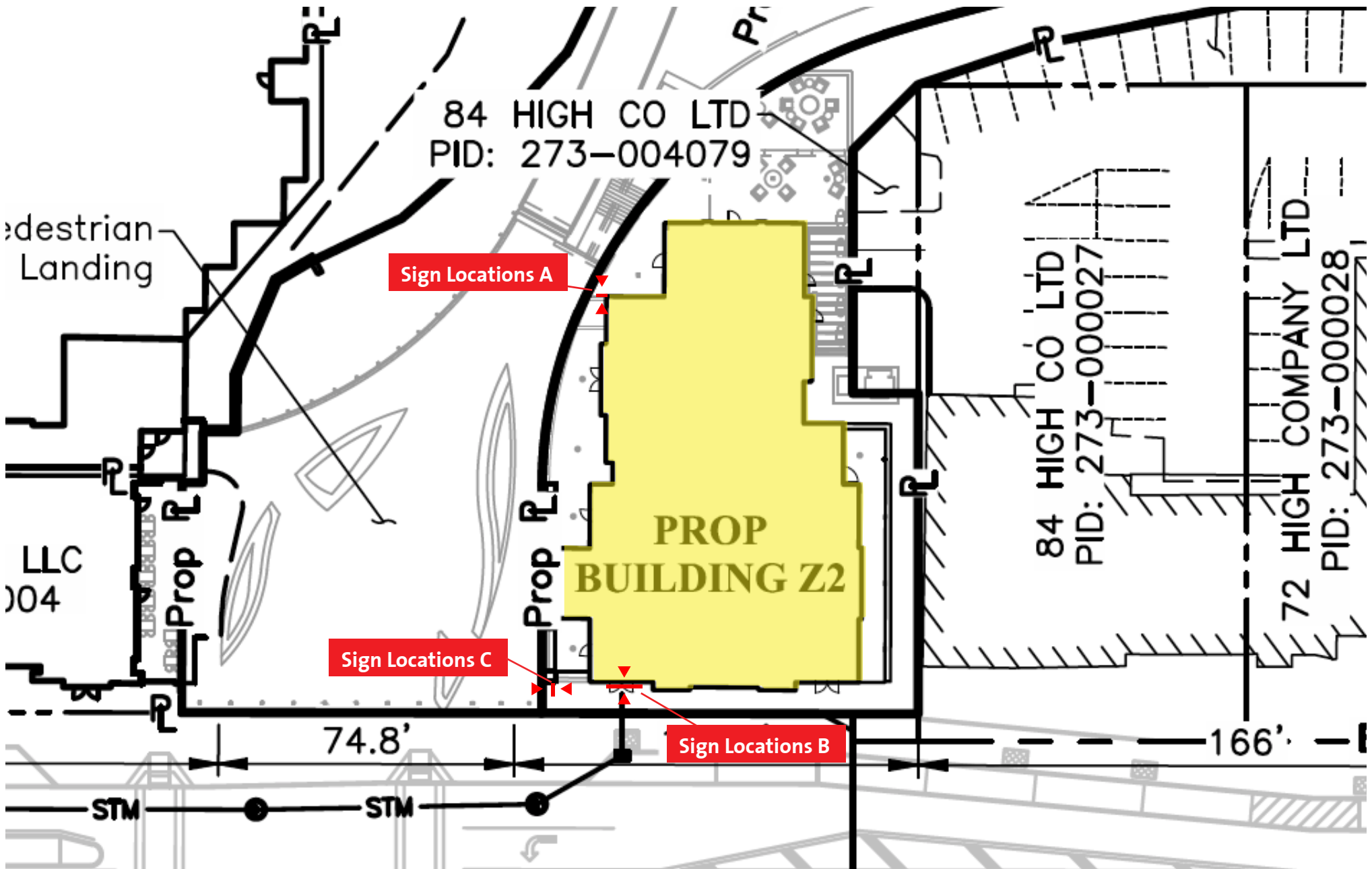




BRIDGE PARK WEST | BUILDING Z2 | THE PEARL SIGNAGE UPDATE



Cameron Mitchell Restaurants

The Pearl Signage Dublin Submittal
Exterior Signage Design Concepts

Sales: ENH

Design: ENH

2



West Elevation | Night Time View



West Elevation | Day Time View



Cameron Mitchell Restaurants

The Pearl Signage Dublin Submittal
Exterior Signage Design Concepts

Sign Location A

Vintage Edison Bulb Illumination

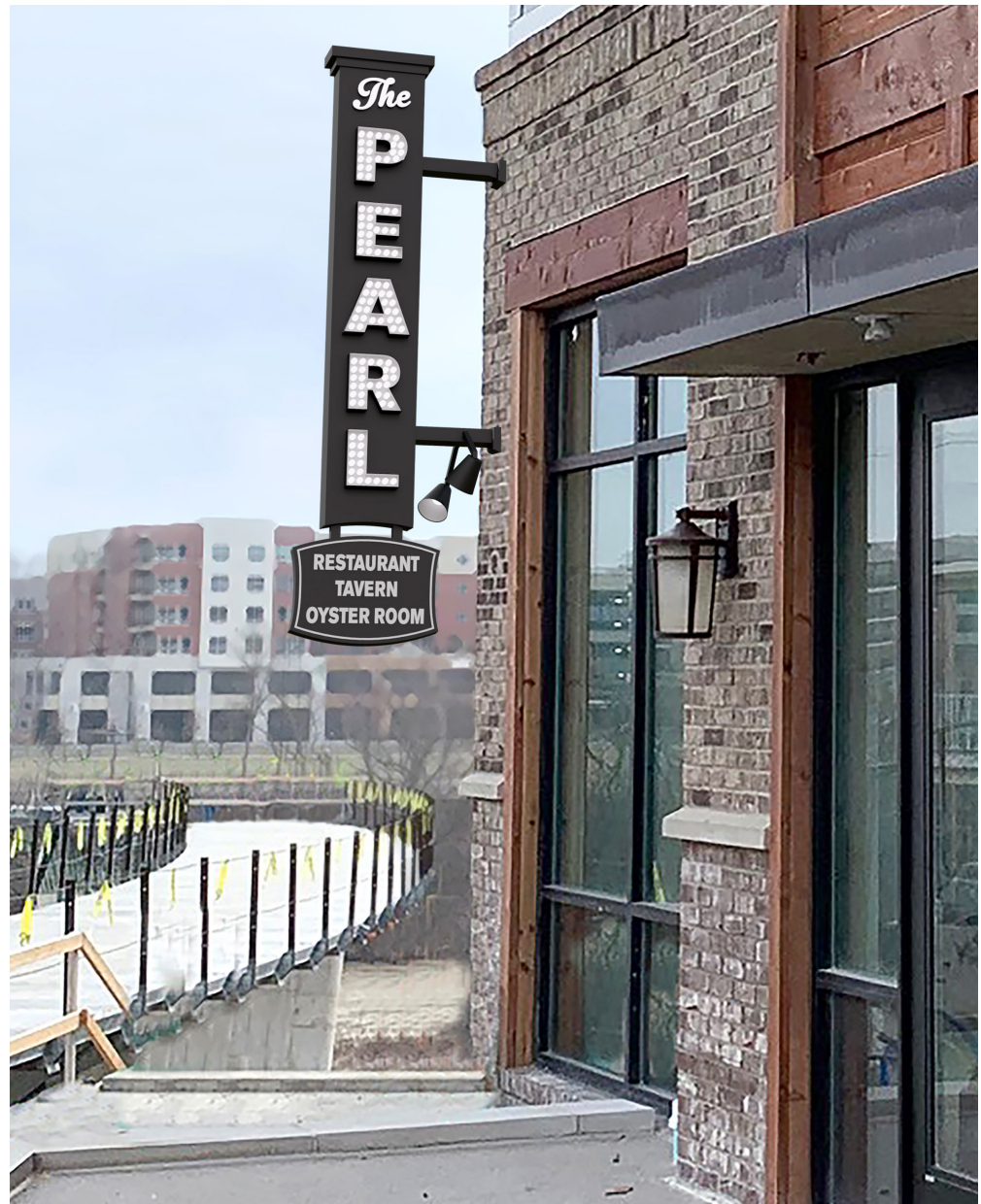
Sales: ENH

Design: ENH

3



West Elevation | Night Time View | Zoomed



West Elevation | Day Time View | Zoomed



Cameron Mitchell Restaurants

The Pearl Signage Dublin Submittal
Exterior Signage Design Concepts

Sign Location A

Vintage Edison Bulb Illumination

Sales: ENH

Design: ENH

4



West Elevation | Night Time View | Vintage Edison Bulb Illumination



West Elevation | Day Time View | Vintage Edison Bulb Illumination



Cameron Mitchell Restaurants

The Pearl Signage Dublin Submittal
Exterior Signage Design Concepts

Sign Location A

Vintage Edison Bulb Illumination

Sales: ENH

Design: ENH

5



West Facing | Night Time View



West Facing | Day Time View



Cameron Mitchell Restaurants

The Pearl Signage Dublin Submittal
Exterior Signage Design Concepts

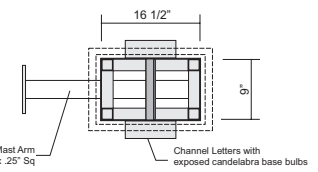
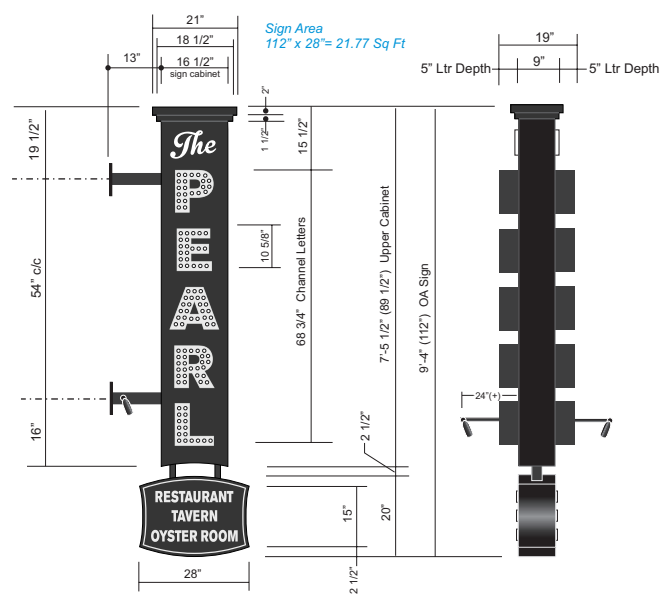
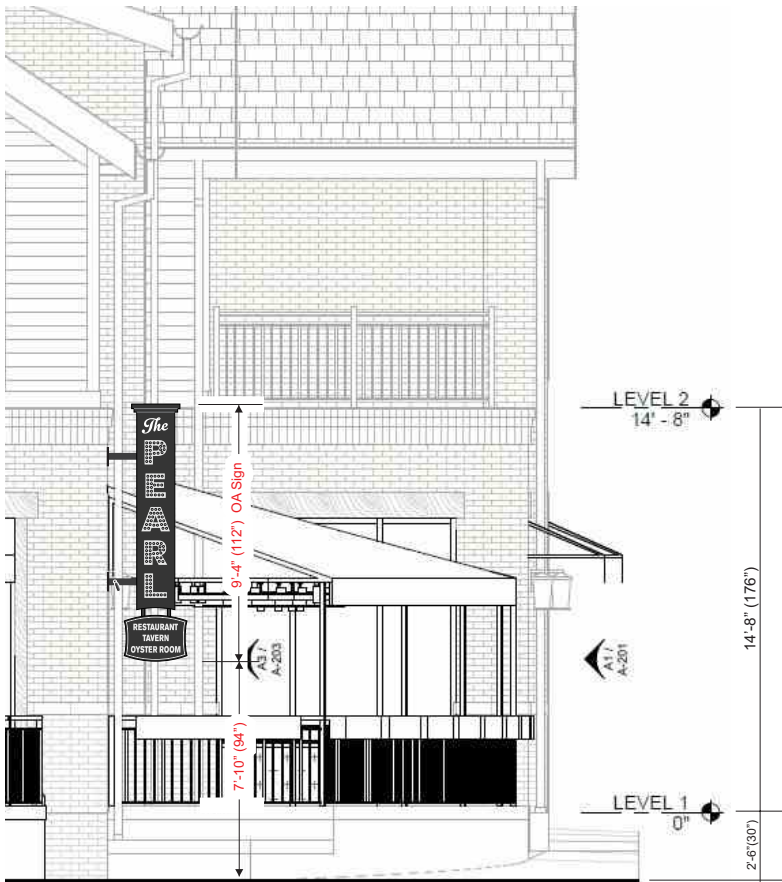
Sign Location A

Vintage Edison Bulb Illumination

Sales: ENH

Design: ENH

6

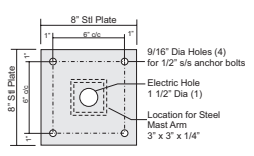


TYP HORIZONTAL SECTION
Scale: 3/4"

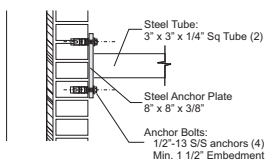
PROJECTING D/F ILLUMINATED MAST ARM SIGN

- * Qty=(1)
 - * Double face, fabricated aluminum frame sign with opaque aluminum faces and open face channel letters with exposed LED marquee lamps.
 - * Sign frame:
 - Double Alum tube 2" x 2" x 1/8" Sq structure.
 - * Sign faces:
 - Flat .125" thick aluminum with coped copy
 - Background Color: Opaque semi-gloss black
 - Coped Push-Thru acrylic letters
 - re: The
 - Push-thru 1" Deep acrylic text
 - Color: Illuminated White
 - Channel fabricated 5" dp aluminum letters
 - re: PEARL
 - Exposed White LED marquee lamps
 - Size: 1" Dia, E12, 4 Watt each
 - Interior Letter color: Painted semi-gloss black
 - Exterior Letter color: Painted semi-gloss black
 - * Steel Mast Arms:
 - Steel mast arms 3" x 3" x 1/4" (2)
 - Mast arm anchoring to be determined
 - Mast arm color: Black
 - * Electric: 110/120 volt 1-20A Circ
 - * Electric to site by client/owner
- * Qty=(1)
 - * Secondary Cabinet: 20" x 28" (non-illuminated) re: RESTAURANT TAVERN OYSTER ROOM
 - * Double face, fabricated aluminum frame sign with opaque aluminum faces and PVC Text
 - * Sign faces:
 - Flat .125" thick aluminum
 - Background Color: Opaque semi-gloss black
 - Computer Cut PVC Text with vinyl inset line
 - Text thickness: 1/2" thick PVC
 - Font Style: Per Art
 - Text Color: Non-illuminated White
 - Inset Line: Cut White Vinyl
 - * Secondary (lower) sign illumination
 - Qty=(2) LED mast Arm fixtures (One for each side of double face sign)
 - Flood Light for Secondary Sign)
 - B-K Lighting, Denali Sign Star, style "L" BLW (Black wrinkle finish)

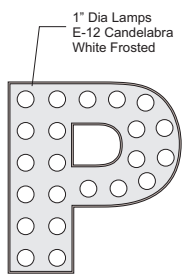
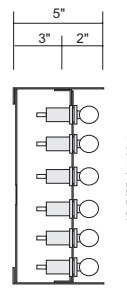
PROJECTING D/F MAST ARM SIGN
Scale: 1/2"



Qty=(2)
STEEL WALL PLATE
8" x 8" x 3/8"
Scale: 3/16"



TYP MAST ARM ANCHOR PLATE
Scale: 1"



Cameron Mitchell Restaurants
The Pearl Signage Dublin Submittal
Exterior Signage Design Concepts

Sign Location A
Vintage Edison Bulb Illumination

Sales: ENH
Design: ENH





Northwest Facing | Night Time View



Cameron Mitchell Restaurants

The Pearl Signage Dublin Submittal
Exterior Signage Design Concepts

Sign Location B & C

Vintage Edison Bulb Illumination
Non-Illuminated Projecting Sign

Sales: ENH

Design: ENH

8



Cameron Mitchell Restaurants

The Pearl Signage Dublin Submittal
Exterior Signage Design Concepts

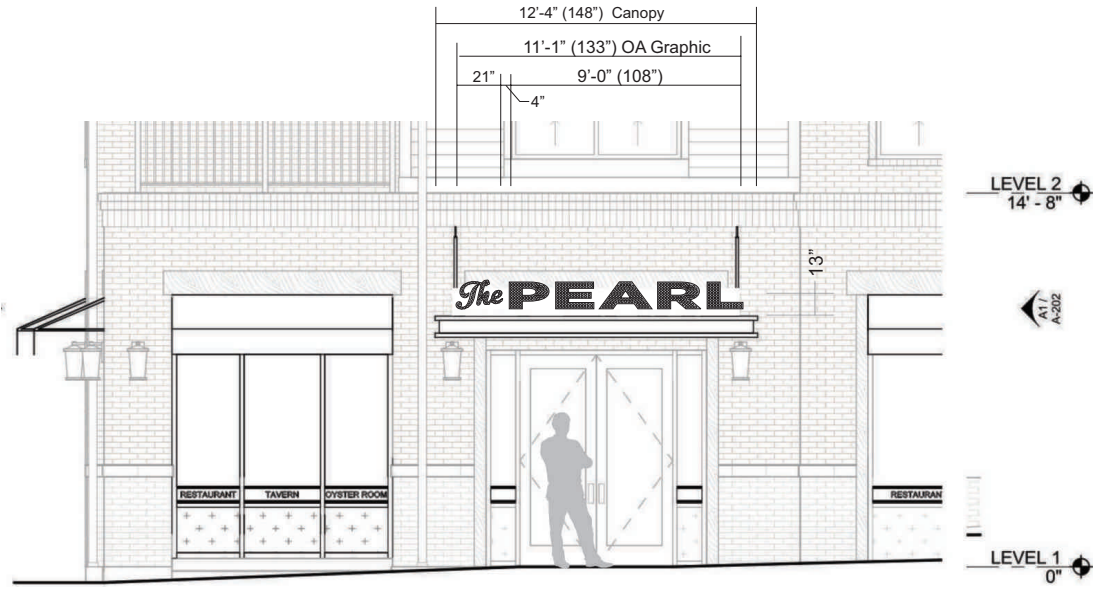
Sign Location B & C

Vintage Edison Bulb Illumination
Non-Illuminated Projecting Sign

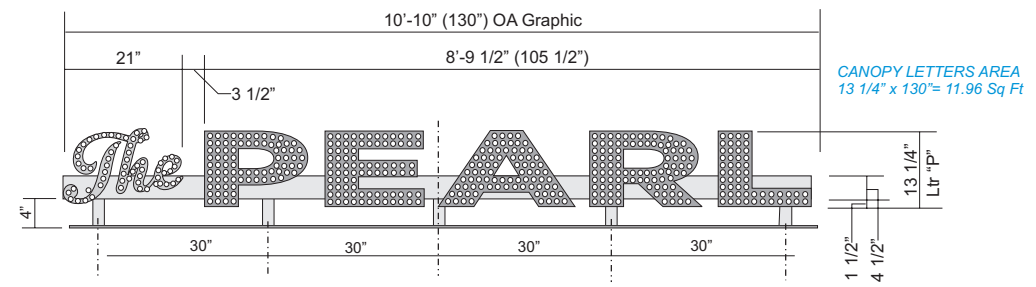
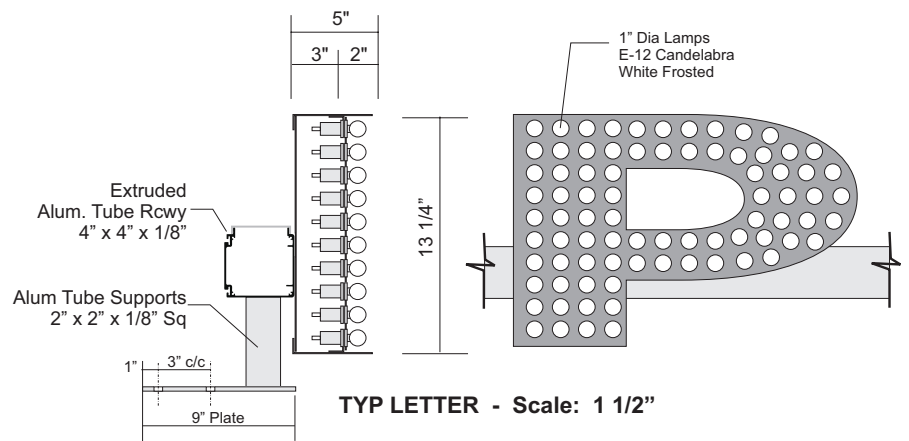
Sales: ENH

Design: ENH

9



WEST ELEVATION - Scale: 3/16"



INDIVIDUAL ILLUMINATED CHANNEL LETTERS - Scale: 1/2"

- * Qty=(1)
- * Individual channel letters with open face and exposed LED Mini lamps re: The PEARL
- * Channel Fabricated Aluminum Letters with Open Face (No Acrylic Lens)
 - Exposed, White, LED Marquee Lamps, Frosted White, E-12, 1" Dia Candelabra base, .4 watt each
- * Aluminum back and edge returns
- * Interior Letter Color: Painted Semi-Gloss Black
- * Exterior Letter Color: Painted Semi-Gloss Black
- * Raceway:
 - Extruded alum racwy 4" x 4" with removable top
 - Raceway Color: Painted to match bldg fascia
- * Electric Service: 110/120 Volt
- * Electric to Site by Client/Owner

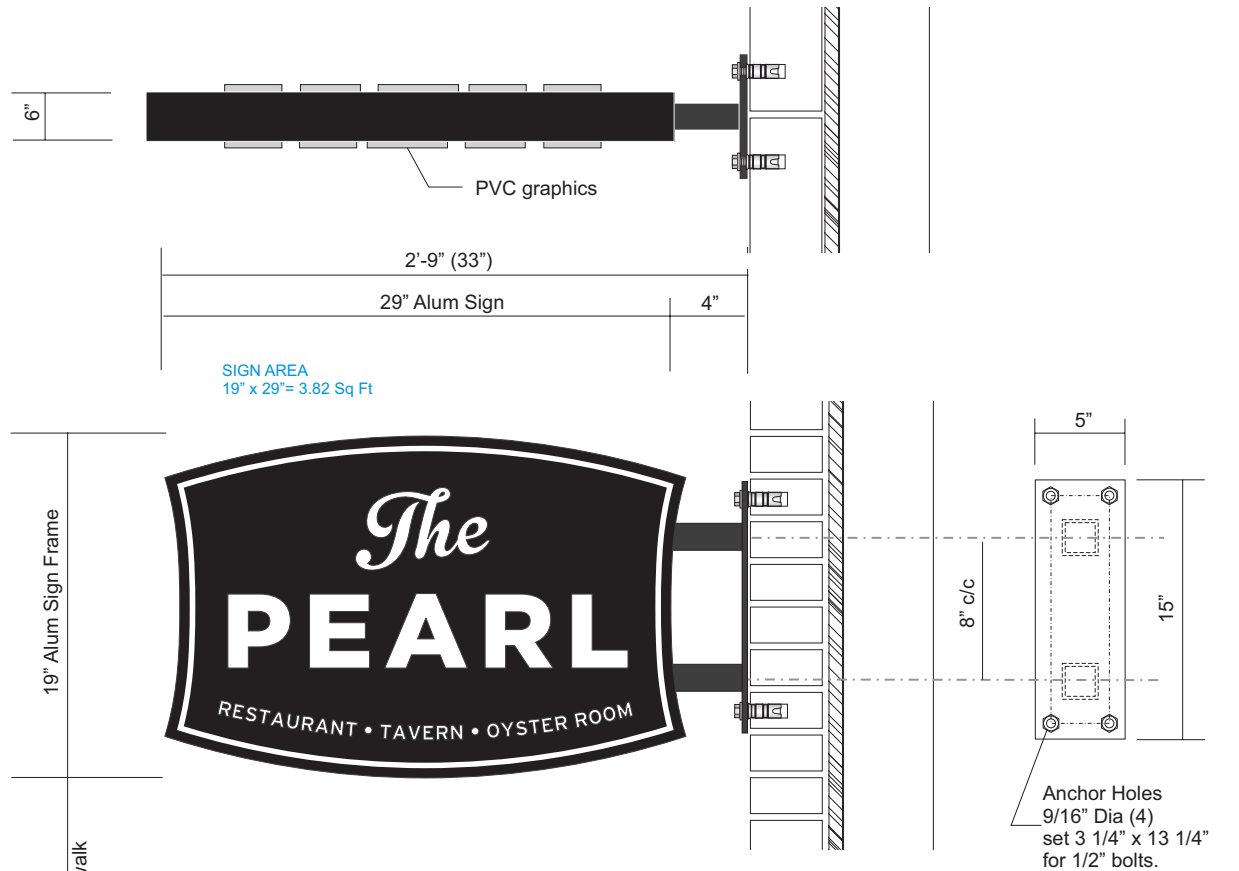


Cameron Mitchell Restaurants
 The Pearl Signage Dublin Submittal
 Exterior Signage Design Concepts

Sign Location B
 Vintage Edison Bulb Illumination

Sales: ENH
 Design: ENH

10



ALUMINUM MNTG PLATE
3/8" Thick

DOUBLE FACE NON-ILLUMINATED PROJECTING SIGN - Scale: 1 1/2"

- * Qty=(1)
- * Double face projecting sign
- * Non-Illuminated
- * Sign frame: Alum tube, 2" x 2" x 1/8" Sq
- * Sign face:
 - Flat .125" aluminum cladding
 - * Computer Cut PVC Graphics
 - Standard "Pearl" Layout
 - Text thickness: 3/4" White PVC
 - Inset Line thickness: 1/2" White PVC
 - Tag Line Text: Cut White Vinyl
 - Background Color: Opaque Semi Gloss Black
- * Support Tube:
 - Aluminum 2" x 2" x 1/8" Sq Tube (2)
 - Aluminum anchor plate, 3/8" thick
 - Tube & plate Color: Painted Black
 - Installation: 1/2"-13 S/S anchors (4)
Min. 1 1/2" Embedment
- * Electric: None required



Cameron Mitchell Restaurants

The Pearl Signage Dublin Submittal
Exterior Signage Design Concepts

Sign Location C

Non-Illuminated Projecting Sign

Sales: ENH

Design: ENH

11



Cameron Mitchell Restaurants

The Pearl Signage Dublin Submittal
Exterior Signage Design Concepts

The Pearl - Downtown

Vintage Edison Bulb Illumination

Sales: ENH

Design: ENH

12



Cameron Mitchell Restaurants

The Pearl Signage Dublin Submittal
Exterior Signage Design Concepts

The Pearl - Downtown

Vintage Edison Bulb Illumination

Sales: ENH

Design: ENH

13