

THE OHIO STATE UNIVERSITY WEXNER MEDICAL CENTER OUTPATIENT CARE FACILITY AND SHIER RINGS ROAD IMPROVEMENTS

CITY OF DUBLIN AND THE OHIO STATE UNIVERSITY

September 5, 2019



INFRASTRUCTURE IMPROVEMENTS

SHIER RINGS ROAD REALIGNMENT
AVERY & SHIER RINGS ROAD ROUNDABOUT
COSGRAY DITCH RELOCATION

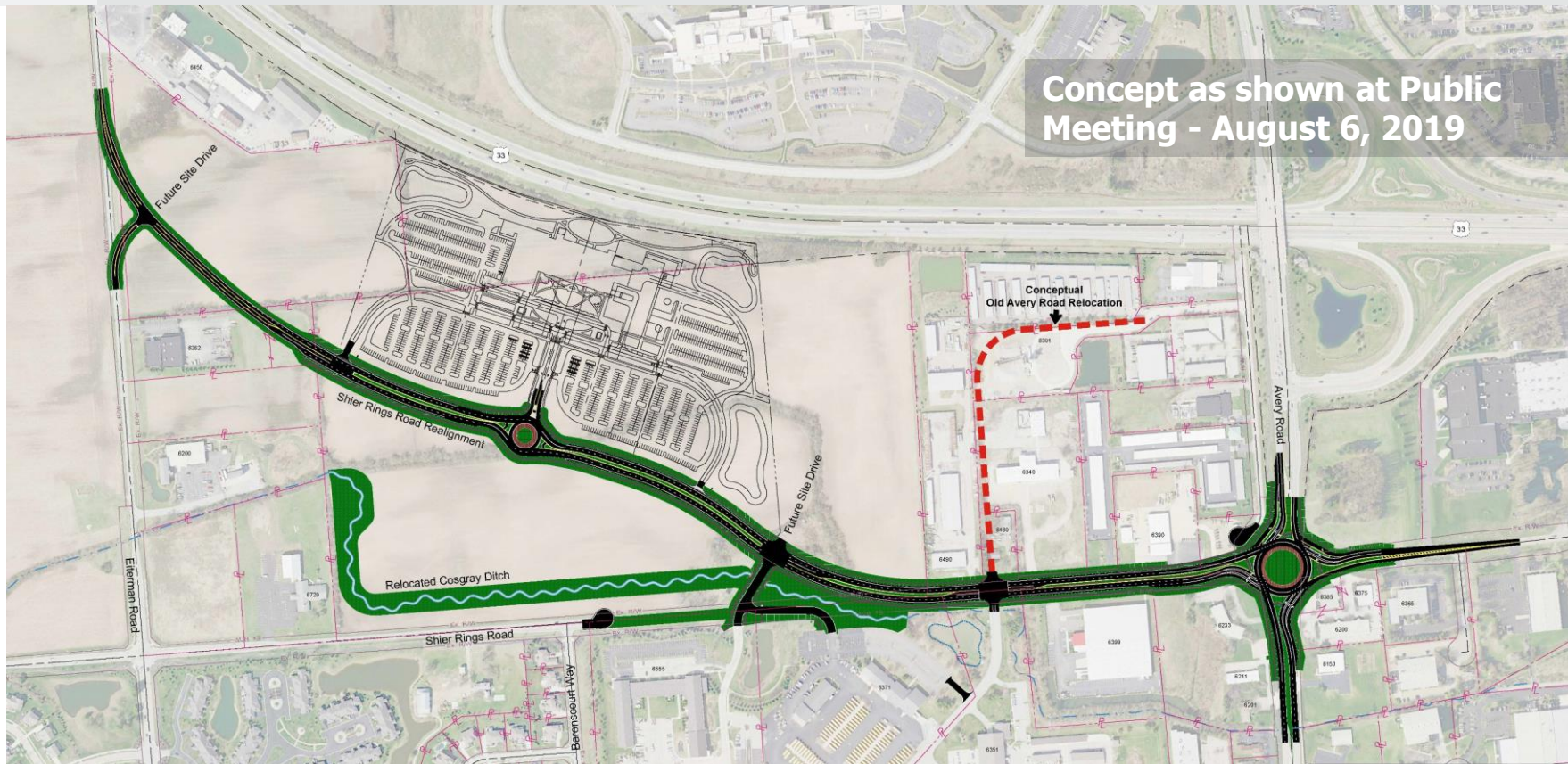
Barb Cox, P.E.
Engineering Manager
City of Dublin





SHIER RINGS REALIGNMENT & ROUNDABOUT AT AVERY ROAD

Concept as shown at Public
Meeting - August 6, 2019

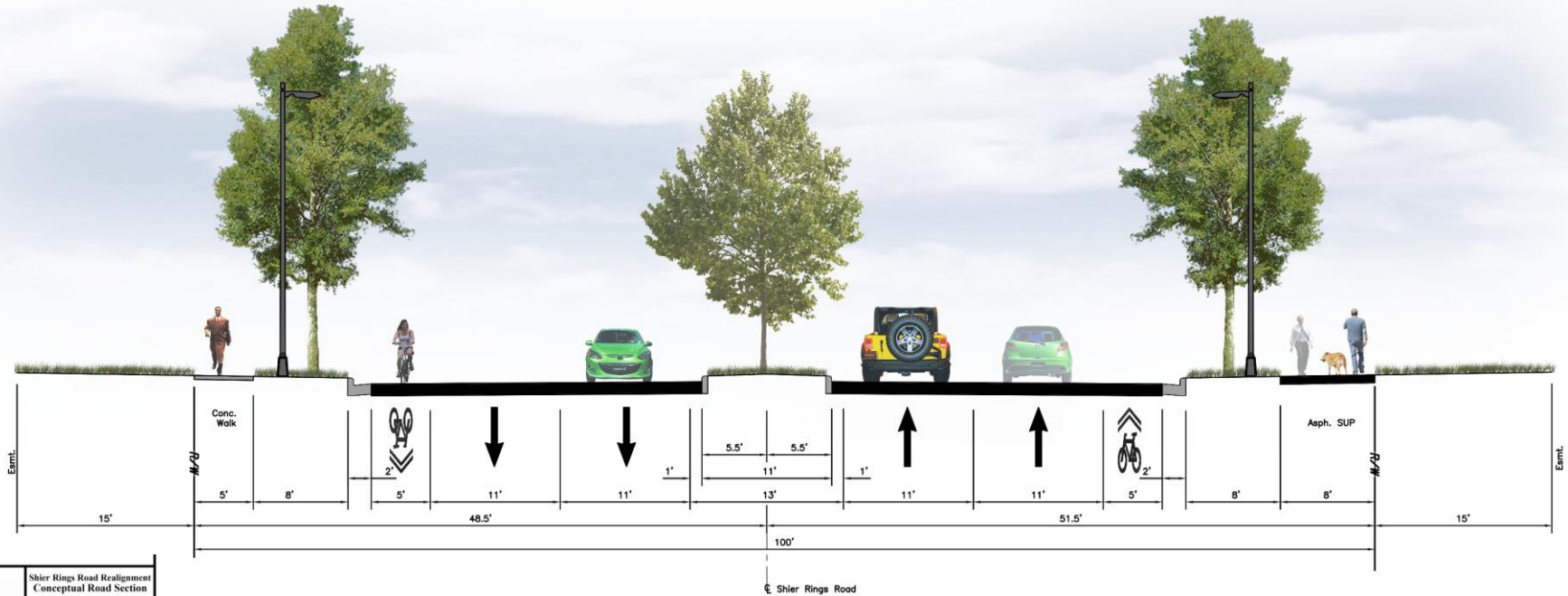


SHIER RINGS REALIGNMENT & ROUNDABOUT AT AVERY ROAD

Current Concept
September 5, 2019



SHIER RINGS REALIGNMENT/WIDENING – TYPICAL SECTION



SHIER RINGS ROAD REALIGNMENT CONCEPTUAL TYPICAL SECTION
4-LANE SECTION (LOOKING EAST)



City of Dublin

Shier Rings Road Realignment
Conceptual Road Section
August, 2019

GRAPHIC SCALE



1 inch = 5 feet



EMHT



PUBLIC INFRASTRUCTURE SCHEDULE

Cosgray Ditch Relocation

- Permits received Spring 2020
- Construction begins in Spring 2020 and ends in Fall 2020

Shier Rings Relocation and Shier Rings/Avery Intersection Improvements

- Design from now until Spring 2020
- Property acquisition in 2020
- Construction starts in Spring 2021 and end in Spring 2022



PLANNED UNIT DEVELOPMENT (PUD) ZONING PROCESS

1

Concept Plan

Provide feedback and suggestions on a development proposal.

8/22/2019

Planning and Zoning
Commission

2

Rezoning with Preliminary Development Plan

Establishes PUD including development text with zoning regulations. Shows site layout, open space, & street design.

9/19/2019

Planning & Zoning
Commission

10/21/2019
11/04/2019

City Council

3

Final Development Plan

Review phases for compliance with the approved Preliminary Development Plan.

TBD

Planning & Zoning
Commission



