

COHATCH DUBLIN
FINAL DEVELOPMENT PLAN SUBMITTAL R1
01.20.2020
© Tim Lai ArchitecT



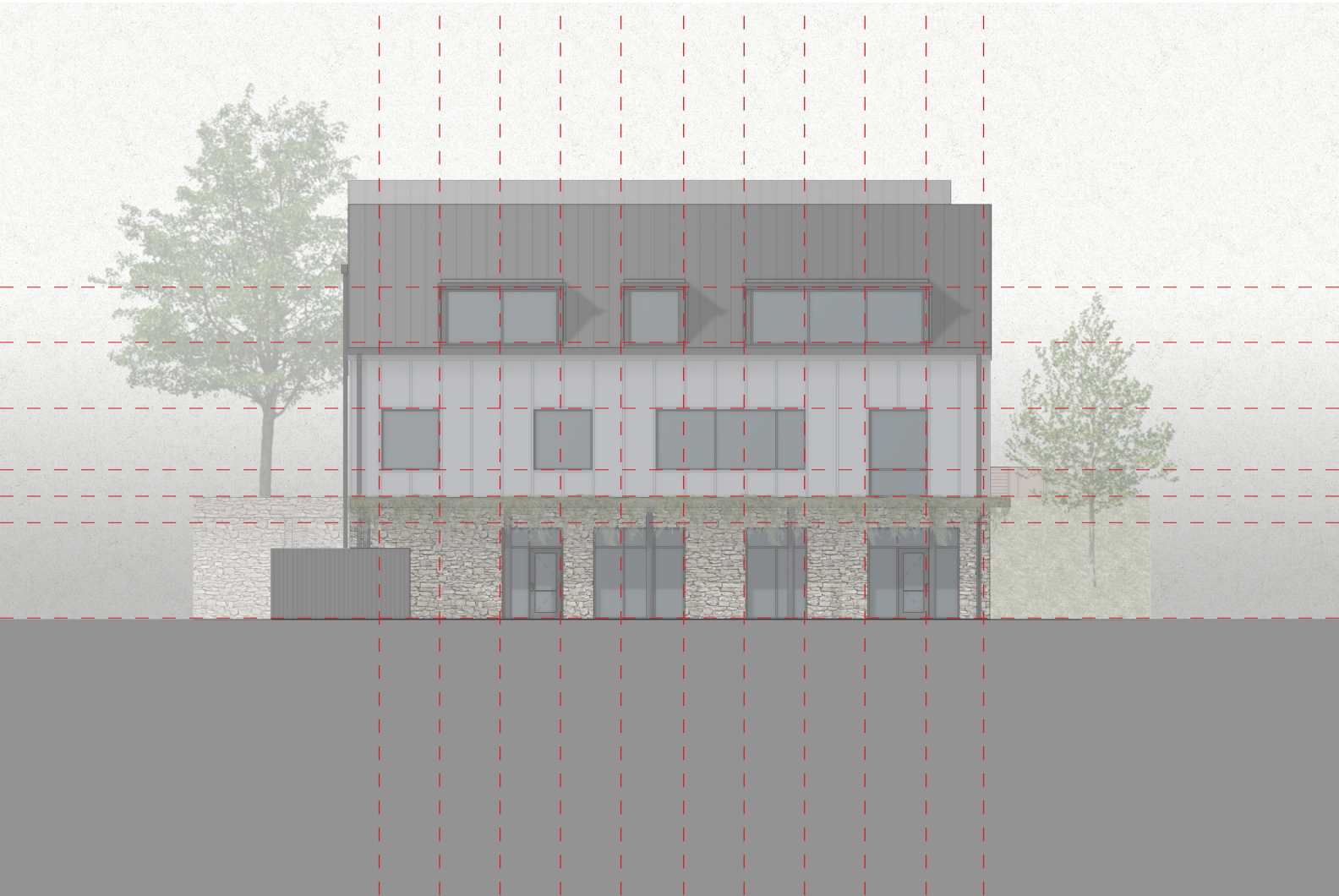
VIEW FROM HIGH ST AND NORTH ST



VIEW FROM NORTH ST EAST

WINDOW PLACEMENT COMPARISON

In response to the Architectural Review Board's comment, the east facade facing Blacksmith Lane is further refined specifically regarding the window placement. The windows are regularized as a whole within the 3' module where the groupings are aligned at both ends as well as other locations.



EAST ELEVATION (PREVIOUS)



EAST ELEVATION (REVISED)



VIEW OF COURTYARD ON NORTH ST



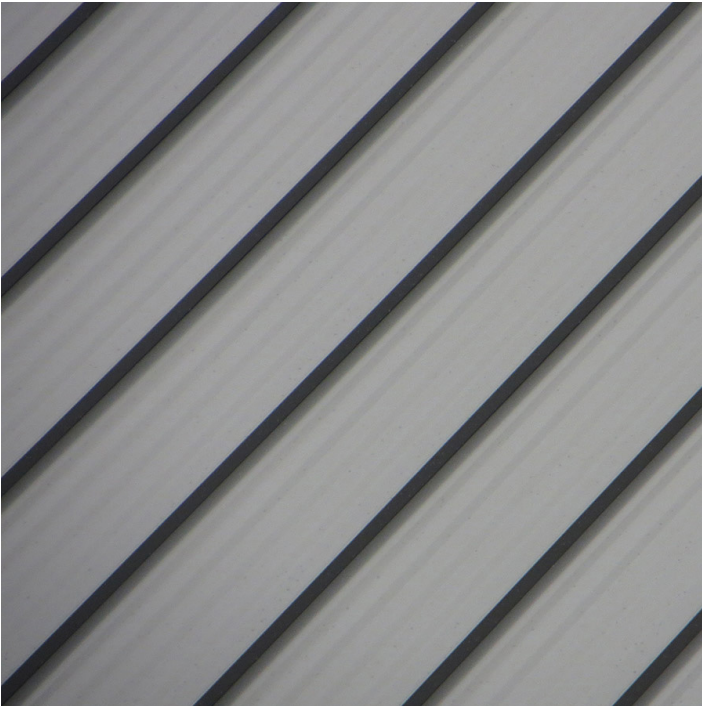
VIEW FROM NORTH ST & BLACKSMITH LANE



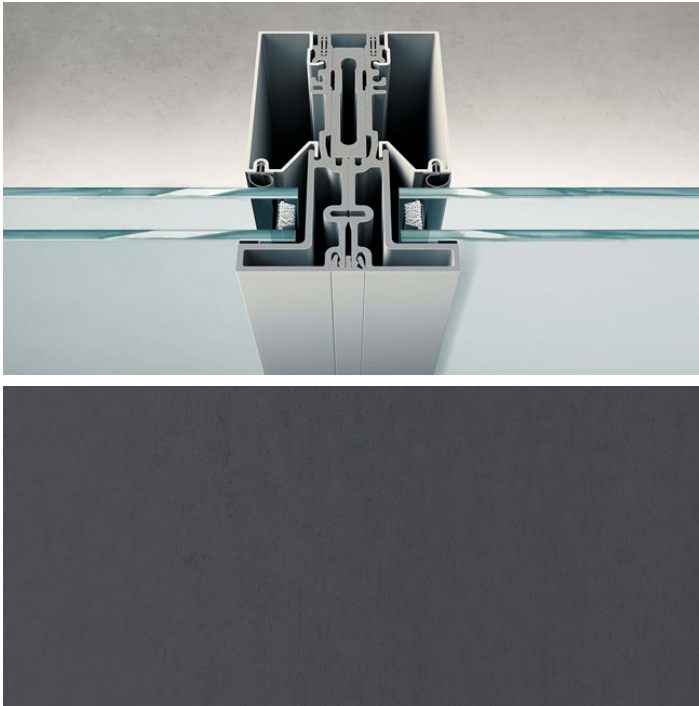
MATERIAL PALETTE KEY



1. VERTICAL WOOD SIDING
6" cedar shiplap w/ silver gray stain - Benjamin Moore Arborcoat or similar



2. ROOF
Standing Seam Metal Roof in charcoal finish



3. WINDOW FRAME
Marvin Modern Direct Glaze in Gunmetal finish or similar



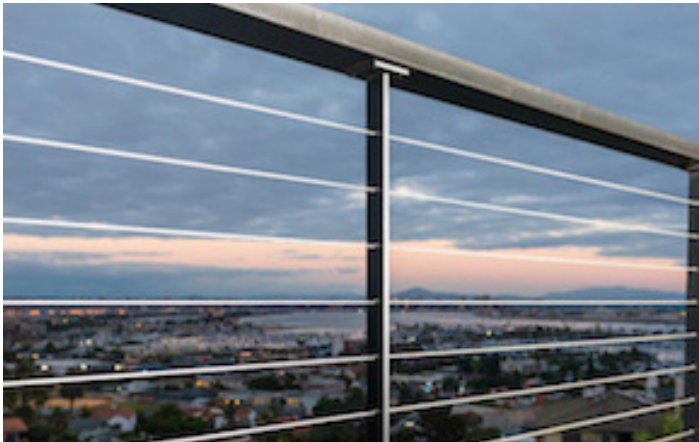
4. STOREFRONT
Tubelite aluminum system or similar in charcoal finish



5. CAST STONE
Creative Mines Farmhouse Ledge in Coyote or similar



6. BRICK SIDEWALK
Brick sidewalk to match existing Dublin finish



7. EXTERIOR GUARDRAIL
Steel flat bar & cable infill with black finish



8. COURTYARD GRAVEL
Decomposed granite - Kafka Stabilized Pathway Mix in Imperial Grey Granite or similar



MATERIAL PALETTE KEY



TABLE W/ BENCHES (SEE TAGS 'A' & 'I' ON 2/A101)

Table 3'-0"W x 6'-6"L x 2'-6"H
Bench 1'-0"W x 6'-6"L x 1'-6"H

Top is ipe w/ water-based outdoor sealant, legs are steel w/ black paint finish

See typical details 8&9/A501

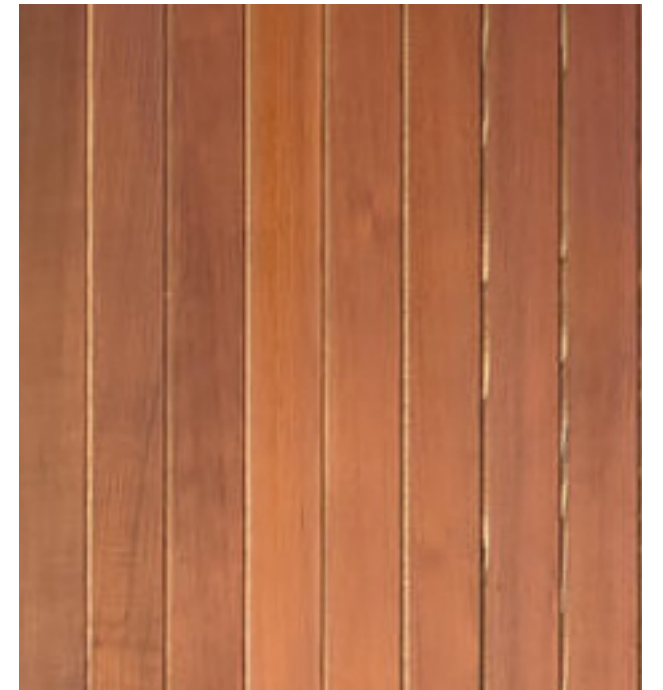


STANDING TABLE (SEE TAGS 'B' & 'G' ON 2/A101)

1'-2"W x 6'-0"L x 3'-0"H

Top is ipe w/ water-based outdoor sealant, legs are steel w/ black paint finish

See typical details 8&9/A501



IPE FURNITURE FINISH

4" ipe planks w/ water-based outdoor sealant - Thompson's WaterSeal Natural Wood Protector or similar

TYPICAL CUSTOM PATIO FURNITURE



FIREPIT & BENCH (SEE TAGS 'C' & 'D' ON 2/A101)

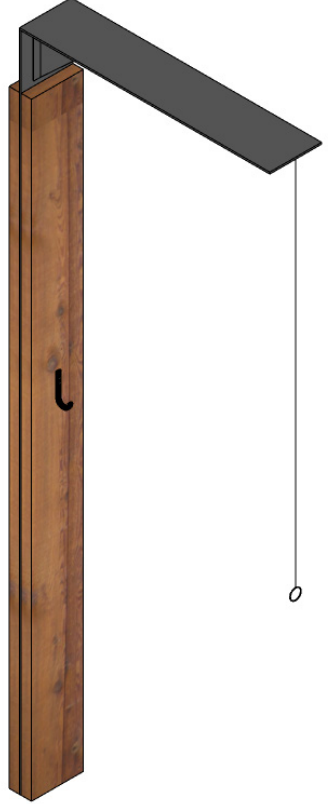
Stacked field stone similar to image above

See typical detail 4/A501



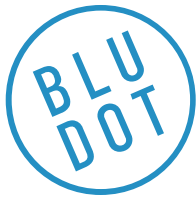
RECLAIMED WALNUT STOOL (SEE TAG 'E' ON 2/A101)

*Walnut stool sourced from existing Black Walnut tree on site.
Finish w/ water-based outdoor sealant*



CUSTOM GAME (SEE TAG 'F' ON 2/A101)

*Custom steel plate post w/ black paint finish, ipe
boards on each side of post w/ water-based outdoor
sealant*



Hot Mesh Counter Stool

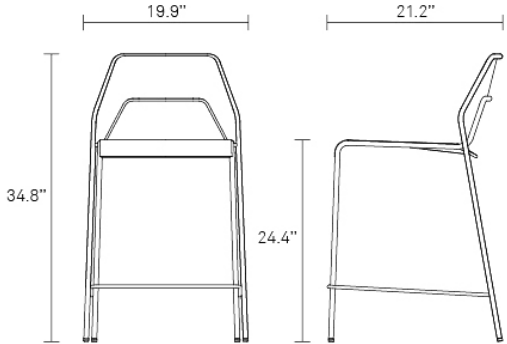
Chipper stool seeks derrières for at home enjoyment or café canoodling. Available in nine finishes: aqua, black, green, grey green, humble red, natural yellow, simple blue, off-white and watermelon. Stackable and suitable for use indoors or out. Also available as a chair or barstool. Shop the entire Hot Mesh Collection.



Materials

- Powder-coated steel
- Ships fully assembled

HM1-CTRSTL-AQ	AQUA	\$259.00
HM1-CTRSTL-BK	BLACK	\$259.00
HM1-CTRSTL-GR	GREEN	\$259.00
HM1-CTRSTL-GG	GREY GREEN	\$259.00
HM1-CTRSTL-RD	HUMBLE RED	\$259.00
HM1-CTRSTL-YL	NATURAL YELLOW	\$259.00
HM1-CTRSTL-WH	OFF WHITE	\$259.00
HM1-CTRSTL-BL	SIMPLE BLUE	\$259.00
HM1-CTRSTL-WM	WATERMELON	\$259.00



BLUDOT.COM

TEL 844.425.8368

service@bludot.com

BAR STOOL (SEE TAG ‘H’ ON 2/A101)

Green finish



OUTDOOR WALL SCONCE

Restoration Hardware Vintage Barn Light, Weathered Zinc finish.

See 2/A101 for locations

