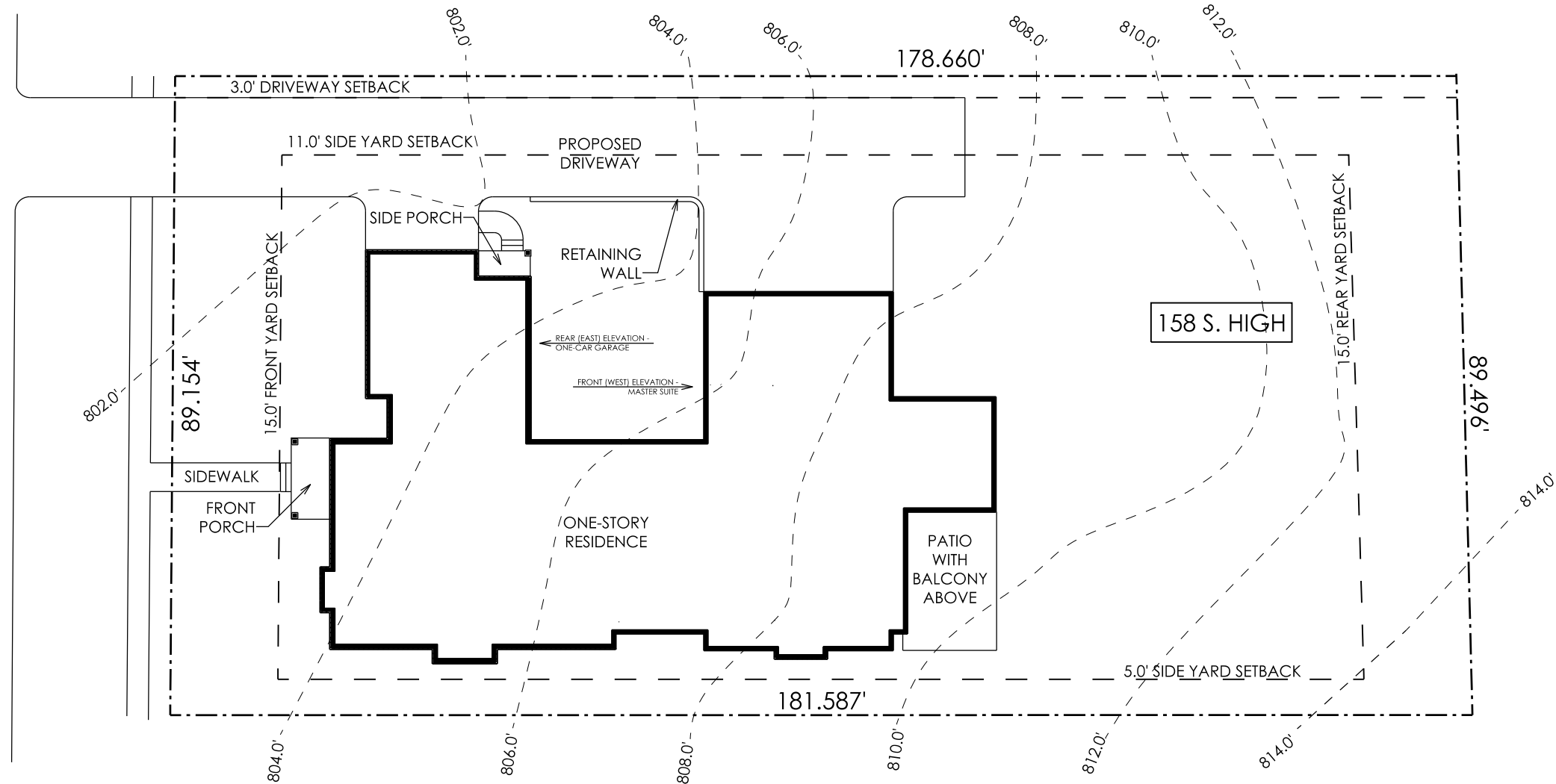


S. HIGH STREET

C/L



158 S. HIGH



SITE PLAN

SCALE: 1" = 20'

PROVIDE SILT FENCE AROUND
NEW CONSTRUCTION

IF ANY ARCHEOLOGICAL
FINDINGS ARE UNCOVERED
DURING CONSTRUCTION,
THEY SHOULD BE PROTECTED
AND THE APPROPRIATE
AUTHORITIES NOTIFIED

MINIMUM LOT SIZE: 8,712 SQUARE FEET
MINIMUM LOT WIDTH: 60.0'
FRONT YARD SETBACK: 15.0'
MINIMUM SIDE YARD SETBACK: 4.0';
MAXIMUM SIDEYARD
SETBACK TOTAL: 16.0'
REAR YARD SETBACK: 15.0'

158 S HIGH STREET LOT COVERAGE
1 DWELLING UNIT
LOT: 16,060.6 SQUARE FEET
NEW ONE-STORY RESIDENCE:
3651.5 SQUARE FEET
NEW PORCHES AND BALCONY:
395.5 SQUARE FEET
NEW DRIVEWAY AND SIDEWALK:
2057.8 SQUARE FEET
NEW FOOTPRINT: 6104.8 SQUARE FEET
TOTAL LOT COVERAGE: 38.0%
ALLOWABLE COVERAGE: 50%

012420	PRELIMINARY
000000	BIDDING
000000	CONSTRUCTION
000000	REVISIONS

Strauss Residence
158 S. High Street
Dublin, Ohio 43017

EPIC Group Ohio
180 S. RiverView Street
Dublin, Ohio 43017



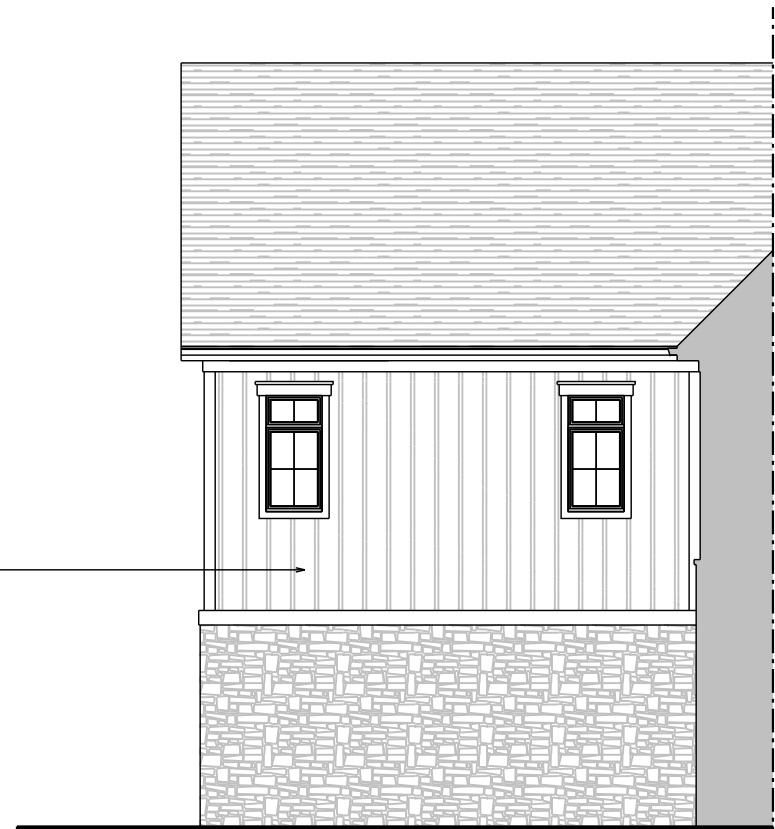
6065 Frantz Road, Suite 205
Dublin, Ohio 43017
614.774.2490 Phone
614.633.1053 Fax
simplifiedarchitecture.com



- NEW ONE-STORY STRUCTURE:
- CULTURED STONE VENEER
 - HARDIPANEL SIDING WITH HARDIETRIM BATTEN BOARDS AT 0.75" THICKNESS. BATTEN STRIPS SPACED 16" O.C. THE NAIL HEADS WILL BE FINISHED/PAINTED.
 - HARDISHINGLES
 - 1X8 RAKE BOARD
 - 1X6 FRIEZE BOARD
 - 1X2 TRIM AND 1X6 TRIM AT HEADER AT WINDOWS
 - 1X4 TRIM AT WINDOWS
 - CULTURED STONE HEADER AND SILL AT WINDOWS
 - 10" COLUMN; 6X6 PRESSURE TREATED POST WITH 2X BLOCKING AND 1X WRAP. 1X10 BASE WITH 1X2 CAP
 - ALUMINUM CLAD WINDOWS
 - ASPHALT SHINGLES
 - METAL ROOFING AT DORMERS

FRONT (WEST) ELEVATION

SCALE: 1/8" = 1'-0"



- NEW ONE-STORY STRUCTURE:
- CULTURED STONE VENEER
 - HARDIPANEL SIDING WITH HARDIETRIM BATTEN BOARDS AT 0.75" THICKNESS. BATTEN STRIPS SPACED 16" O.C. THE NAIL HEADS WILL BE FINISHED/PAINTED.
 - HARDISHINGLES
 - 1X8 RAKE BOARD
 - 1X6 FRIEZE BOARD
 - 1X2 TRIM AND 1X6 TRIM AT HEADER AT WINDOWS
 - 1X4 TRIM AT WINDOWS
 - CULTURED STONE HEADER AND SILL AT WINDOWS
 - 10" COLUMN; 6X6 PRESSURE TREATED POST WITH 2X BLOCKING AND 1X WRAP. 1X10 BASE WITH 1X2 CAP
 - ALUMINUM CLAD WINDOWS
 - ASPHALT SHINGLES
 - METAL ROOFING AT DORMERS

FRONT (WEST) ELEVATION - MASTER SUITE

SCALE: 1/8" = 1'-0"

	PRELIMINARY	BIDDING	CONSTRUCTION	REVISIONS
012420				
000000				
000000				
000000				

Strauss Residence
 158 S. High Street
 Dublin, Ohio 43017

EPIC Group Ohio
 180 S. Riverview Street
 Dublin, Ohio 43017



6065 Frantz Road, Suite 205
 Dublin, Ohio 43017
 614.774.2490 Phone
 614.633.1053 Fax
 simplifiedarchitecture.com

NEW ONE-STORY STRUCTURE:
 - CULTURED STONE VENEER
 - HARDIPANEL SIDING WITH HARDIETRIM BATTEN BOARDS AT 0.75" THICKNESS. BATTEN STRIPS SPACED 16" O.C. THE NAIL HEADS WILL BE FINISHED/PAINTED.
 - HARDISHINGLES
 - 1X8 RAKE BOARD
 - 1X6 FRIEZE BOARD
 - 1X2 TRIM AND 1X6 TRIM AT HEADER AT WINDOWS
 - 1X4 TRIM AT WINDOWS
 - CULTURED STONE HEADER AND SILL AT WINDOWS
 - 10" COLUMN; 6X6 PRESSURE TREATED POST WITH 2X BLOCKING AND 1X WRAP, 1X10 BASE WITH 1X2 CAP
 - ALUMINUM CLAD WINDOWS
 - ASPHALT SHINGLES
 - METAL ROOFING AT DORMERS



LEFT (NORTH) ELEVATION
 SCALE: 1/8" = 1'-0"

012420	PRELIMINARY
000000	BIDDING
000000	CONSTRUCTION
000000	REVISIONS

Strauss Residence
 158 S. High Street
 Dublin, Ohio 43017

EPIC Group Ohio
 180 S. Riverview Street
 Dublin, Ohio 43017



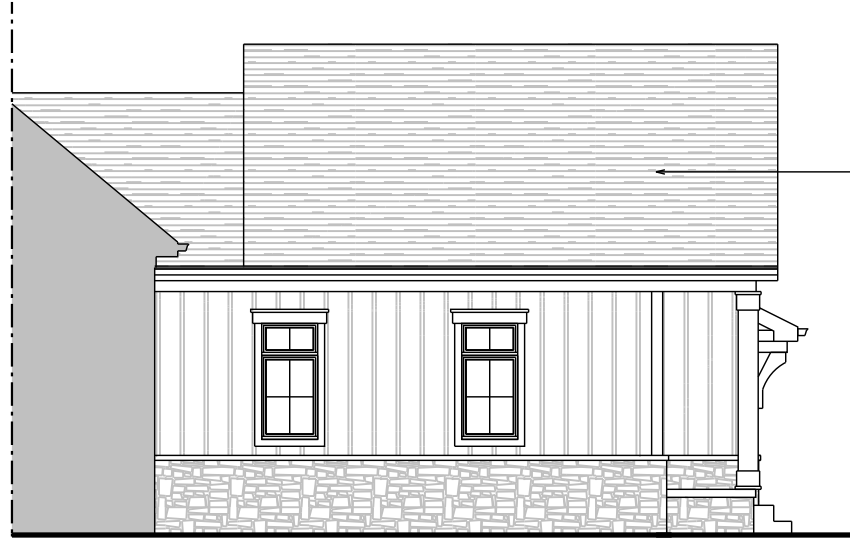
6065 Frantz Road . Suite 205
 Dublin, Ohio 43017
 614.774.2490 Phone
 614.633.1053 Fax
 simplifiedarchitecture.com

- NEW ONE-STORY STRUCTURE:
 - CULTURED STONE VENEER
 - HARDIPANEL SIDING WITH HARDIETRIM BATTEN BOARDS AT 0.75" THICKNESS. BATTEN STRIPS SPACED 16" O.C. THE NAIL HEADS WILL BE FINISHED/PAINTED.
 - HARDISHINGLES
 - 1X8 RAKE BOARD
 - 1X6 FRIEZE BOARD
 - 1X2 TRIM AND 1X6 TRIM AT HEADER AT WINDOWS
 - 1X4 TRIM AT WINDOWS
 - CULTURED STONE HEADER AND SILL AT WINDOWS
 - 10" COLUMN; 6X6 PRESSURE TREATED POST WITH 2X BLOCKING AND 1X WRAP. 1X10 BASE WITH 1X2 CAP
 - ALUMINUM CLAD WINDOWS
 - ASPHALT SHINGLES
 - METAL ROOFING AT DORMERS



REAR (EAST) ELEVATION

SCALE: 1/8" = 1'-0"



- NEW ONE-STORY STRUCTURE:
 - CULTURED STONE VENEER
 - HARDIPANEL SIDING WITH HARDIETRIM BATTEN BOARDS AT 0.75" THICKNESS. BATTEN STRIPS SPACED 16" O.C. THE NAIL HEADS WILL BE FINISHED/PAINTED.
 - HARDISHINGLES
 - 1X8 RAKE BOARD
 - 1X6 FRIEZE BOARD
 - 1X2 TRIM AND 1X6 TRIM AT HEADER AT WINDOWS
 - 1X4 TRIM AT WINDOWS
 - CULTURED STONE HEADER AND SILL AT WINDOWS
 - 10" COLUMN; 6X6 PRESSURE TREATED POST WITH 2X BLOCKING AND 1X WRAP. 1X10 BASE WITH 1X2 CAP
 - ALUMINUM CLAD WINDOWS
 - ASPHALT SHINGLES
 - METAL ROOFING AT DORMERS

REAR (EAST) ELEVATION - ONE-CAR GARAGE

SCALE: 1/8" = 1'-0"

012420	PRELIMINARY
000000	BIDDING
000000	CONSTRUCTION
000000	REVISIONS

Strauss Residence
 158 S. High Street
 Dublin, Ohio 43017

EPIC Group Ohio
 180 S. Riverview Street
 Dublin, Ohio 43017



6065 Frantz Road, Suite 205
 Dublin, Ohio 43017
 614.774.2490 Phone
 614.633.1053 Fax
 simplifiedarchitecture.com

- NEW ONE-STORY STRUCTURE:
- CULTURED STONE VENEER
 - HARDIPANEL SIDING WITH HARDIETRIM BATTEN BOARDS AT 0.75" THICKNESS. BATTEN STRIPS SPACED 16" O.C. THE NAIL HEADS WILL BE FINISHED/PAINTED.
 - HARDISHINGLES
 - 1X8 RAKE BOARD
 - 1X6 FRIEZE BOARD
 - 1X2 TRIM AND 1X6 TRIM AT HEADER AT WINDOWS
 - 1X4 TRIM AT WINDOWS
 - CULTURED STONE HEADER AND SILL AT WINDOWS
 - 10" COLUMN; 6X6 PRESSURE TREATED POST WITH 2X BLOCKING AND 1X WRAP. 1X10 BASE WITH 1X2 CAP
 - ALUMINUM CLAD WINDOWS
 - ASPHALT SHINGLES
 - METAL ROOFING AT DORMERS



RIGHT (SOUTH) ELEVATION

SCALE: 1/8" = 1'-0"

012420	PRELIMINARY
000000	BIDDING
000000	CONSTRUCTION
000000	REVISIONS

Strauss Residence
 158 S. High Street
 Dublin, Ohio 43017

EPIC Group Ohio
 180 S. Riverview Street
 Dublin, Ohio 43017



6065 Frantz Road . Suite 205
 Dublin, Ohio 43017
 614.774.2490 Phone
 614.633.1053 Fax
 simplifiedarchitecture.com