

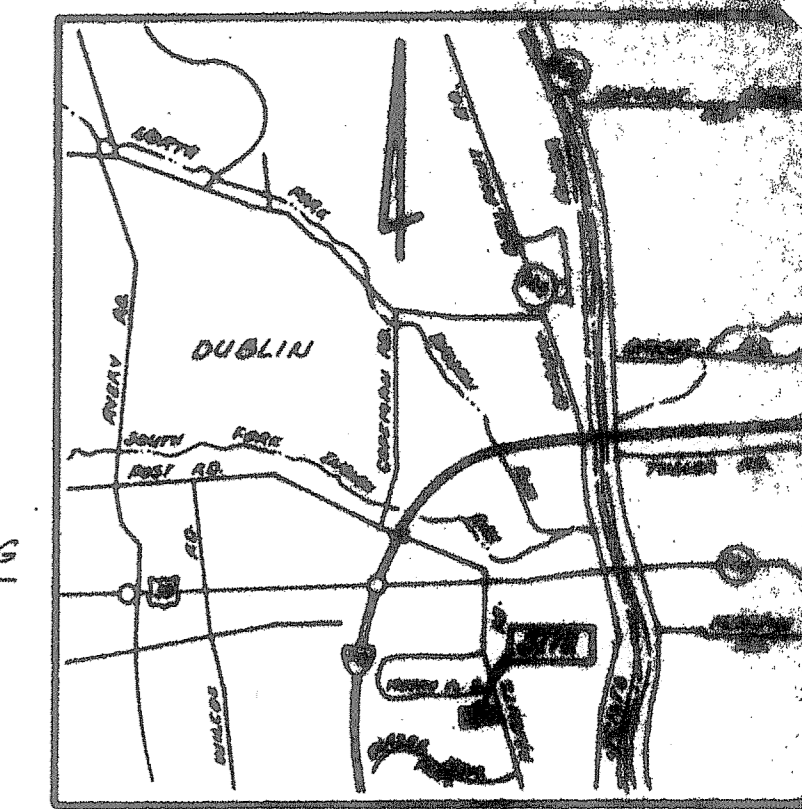
**BENCH MARKS**

Franklin County V-20  
 Brass plate in C.M. at intersection of Pinney Rd. and Frantz Rd.,  
 41.5 feet W. of centerline of Frantz Rd. southbound lanes, 28.3 ft. S.W. of  
 T/Pole No. 321A285, 78 ft. S. of E. of Pinney Rd., 0.5 E. of W.P. 14' deep, access  
 thru a large diameter plastic pipe. Elev. 889.460

Franklin County V-21  
 Brass plate in C.M. at junction of S.R. 161 and Frantz Rd., in front of  
 the Ohio Federal Bank, 78.5 ft. N. of E. of Bank exit Dr., 63.8 ft. S. of E. of  
 S.R. 161 eastbound lanes, 56.7 ft. E. of E. of Frantz Rd., 127 ft. S.W. of  
 concrete base for bank sign, 2 ft. N. of a W.P. Elev. 865.590

PP 899

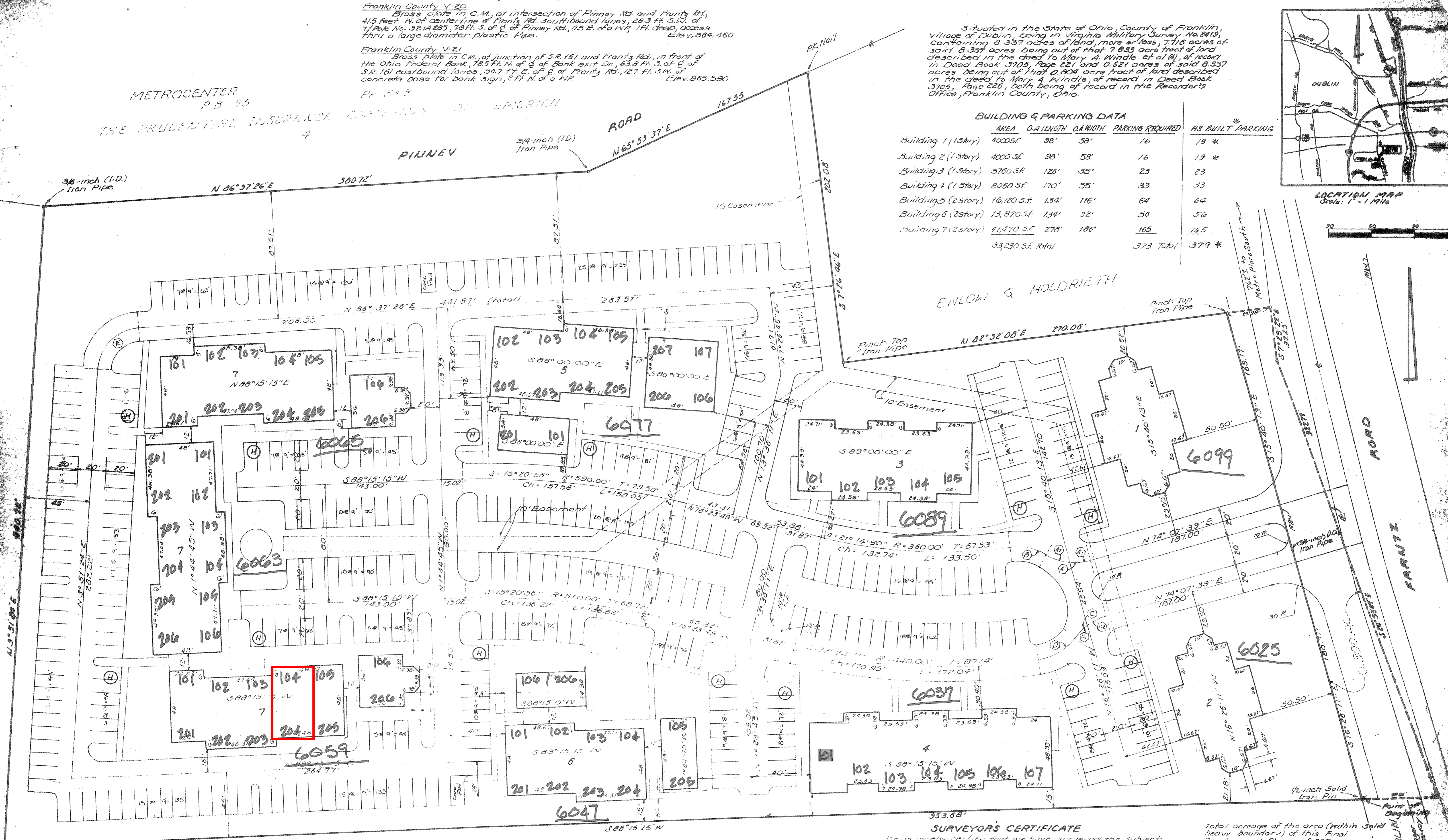
Situated in the State of Ohio, County of Franklin,  
 Village of Dublin, being in Virginia Military Survey No. 2413,  
 containing 8.337 acres of land, more or less, 7.116 acres of  
 said 8.337 acres being out of that 7.833 acre tract of land  
 described in the deed to Mary A. Windle et al (6), of record  
 in Deed Book 3705, Page 221 and 0.621 acres of said 8.337  
 acres being out of that 0.804 acre tract of land described  
 in the deed to Mary A. Windle, of record in Deed Book  
 3705, Page 226, both being of record in the Recorder's  
 Office, Franklin County, Ohio.



**BUILDING & PARKING DATA**

	AREA	O.A. LENGTH	O.A. WIDTH	PARKING REQUIRED	AS BUILT * PARKING
Building 1 (1 story)	4000 SF	98'	58'	16	19 *
Building 2 (1 story)	4000 SF	98'	58'	16	19 *
Building 3 (1 story)	5760 SF	126'	55'	23	23
Building 4 (1 story)	8060 SF	170'	55'	33	33
Building 5 (2 story)	16,120 SF	134'	116'	64	64
Building 6 (2 story)	13,820 SF	134'	92'	50	50
Building 7 (2 story)	4,470 SF	278'	188'	165	165
	33,230 SF. Total			373 Total	379 *

LOCATION MAP Scale: 1" = 1 Mile



**SURVEYOR'S CERTIFICATE**

We do hereby certify that we have surveyed the subject premises and prepared the attached plat. All dimensions are shown in feet and decimal parts thereof. Dimensions shown along curved lines are stated measurements. Iron pins are indicated by the following symbols:

BAUER, DAVIDSON & MERCHANT, INC.  
 CONSULTING ENGINEERS  
 by William W. Merchant 4-4-86  
 Registered Surveyor

Total acreage of the area (within solid heavy boundary) of this Final Development Plan is 8.337 acres.

**"AS BUILT" PARKING**  
 BOUNDARY MAP AND  
 SITE DIMENSION PLAN  
 for  
**MILLENIUM**

BAUER, DAVIDSON & MERCHANT, INC.  
 CONSULTING ENGINEERS  
 2607 1/2 N. HIGH STREET  
 COLUMBUS, OHIO  
 SCALE: 1" = 30'  
 March, 1986

APPROVED BY PLANNING COMMISSION  
James H. Warner 4/9/86  
 Engineer Village of Dublin, Ohio  
Ronald W. ... 4/15/86  
 Planning Commission Village of Dublin, Ohio

\* Revised 1-13-87  
 Revised 1-21-87

**FINAL DEVELOPMENT PLAN SHEET 1/1**

- ① 1-35°41'27" R=40' T=13.06' Ch=25.69' L=26.15'
- ② 1-37°21'55" R=40' T=13.06' Ch=25.69' L=26.15'
- ③ 1-37°21'55" R=40' T=13.06' Ch=25.69' L=26.15'
- ④ 1-37°21'55" R=40' T=13.06' Ch=25.69' L=26.15'
- ⑤ 1-37°21'55" R=40' T=13.06' Ch=25.69' L=26.15'
- ⑥ 1-37°21'55" R=40' T=13.06' Ch=25.69' L=26.15'
- ⑦ 1-37°21'55" R=40' T=13.06' Ch=25.69' L=26.15'
- ⑧ 1-37°21'55" R=40' T=13.06' Ch=25.69' L=26.15'
- ⑨ 1-37°21'55" R=40' T=13.06' Ch=25.69' L=26.15'
- ⑩ 1-37°21'55" R=40' T=13.06' Ch=25.69' L=26.15'
- ⑪ 1-37°21'55" R=40' T=13.06' Ch=25.69' L=26.15'
- ⑫ 1-37°21'55" R=40' T=13.06' Ch=25.69' L=26.15'
- ⑬ 1-37°21'55" R=40' T=13.06' Ch=25.69' L=26.15'
- ⑭ 1-37°21'55" R=40' T=13.06' Ch=25.69' L=26.15'
- ⑮ 1-37°21'55" R=40' T=13.06' Ch=25.69' L=26.15'
- ⑯ 1-37°21'55" R=40' T=13.06' Ch=25.69' L=26.15'
- ⑰ 1-37°21'55" R=40' T=13.06' Ch=25.69' L=26.15'
- ⑱ 1-37°21'55" R=40' T=13.06' Ch=25.69' L=26.15'
- ⑲ 1-37°21'55" R=40' T=13.06' Ch=25.69' L=26.15'
- ⑳ 1-37°21'55" R=40' T=13.06' Ch=25.69' L=26.15'
- ㉑ 1-37°21'55" R=40' T=13.06' Ch=25.69' L=26.15'
- ㉒ 1-37°21'55" R=40' T=13.06' Ch=25.69' L=26.15'
- ㉓ 1-37°21'55" R=40' T=13.06' Ch=25.69' L=26.15'
- ㉔ 1-37°21'55" R=40' T=13.06' Ch=25.69' L=26.15'
- ㉕ 1-37°21'55" R=40' T=13.06' Ch=25.69' L=26.15'
- ㉖ 1-37°21'55" R=40' T=13.06' Ch=25.69' L=26.15'
- ㉗ 1-37°21'55" R=40' T=13.06' Ch=25.69' L=26.15'
- ㉘ 1-37°21'55" R=40' T=13.06' Ch=25.69' L=26.15'
- ㉙ 1-37°21'55" R=40' T=13.06' Ch=25.69' L=26.15'
- ㉚ 1-37°21'55" R=40' T=13.06' Ch=25.69' L=26.15'
- ㉛ 1-37°21'55" R=40' T=13.06' Ch=25.69' L=26.15'
- ㉜ 1-37°21'55" R=40' T=13.06' Ch=25.69' L=26.15'
- ㉝ 1-37°21'55" R=40' T=13.06' Ch=25.69' L=26.15'
- ㉞ 1-37°21'55" R=40' T=13.06' Ch=25.69' L=26.15'
- ㉟ 1-37°21'55" R=40' T=13.06' Ch=25.69' L=26.15'
- ㊱ 1-37°21'55" R=40' T=13.06' Ch=25.69' L=26.15'
- ㊲ 1-37°21'55" R=40' T=13.06' Ch=25.69' L=26.15'
- ㊳ 1-37°21'55" R=40' T=13.06' Ch=25.69' L=26.15'
- ㊴ 1-37°21'55" R=40' T=13.06' Ch=25.69' L=26.15'
- ㊵ 1-37°21'55" R=40' T=13.06' Ch=25.69' L=26.15'
- ㊶ 1-37°21'55" R=40' T=13.06' Ch=25.69' L=26.15'
- ㊷ 1-37°21'55" R=40' T=13.06' Ch=25.69' L=26.15'
- ㊸ 1-37°21'55" R=40' T=13.06' Ch=25.69' L=26.15'
- ㊹ 1-37°21'55" R=40' T=13.06' Ch=25.69' L=26.15'
- ㊺ 1-37°21'55" R=40' T=13.06' Ch=25.69' L=26.15'
- ㊻ 1-37°21'55" R=40' T=13.06' Ch=25.69' L=26.15'
- ㊼ 1-37°21'55" R=40' T=13.06' Ch=25.69' L=26.15'
- ㊽ 1-37°21'55" R=40' T=13.06' Ch=25.69' L=26.15'
- ㊾ 1-37°21'55" R=40' T=13.06' Ch=25.69' L=26.15'
- ㊿ 1-37°21'55" R=40' T=13.06' Ch=25.69' L=26.15'