

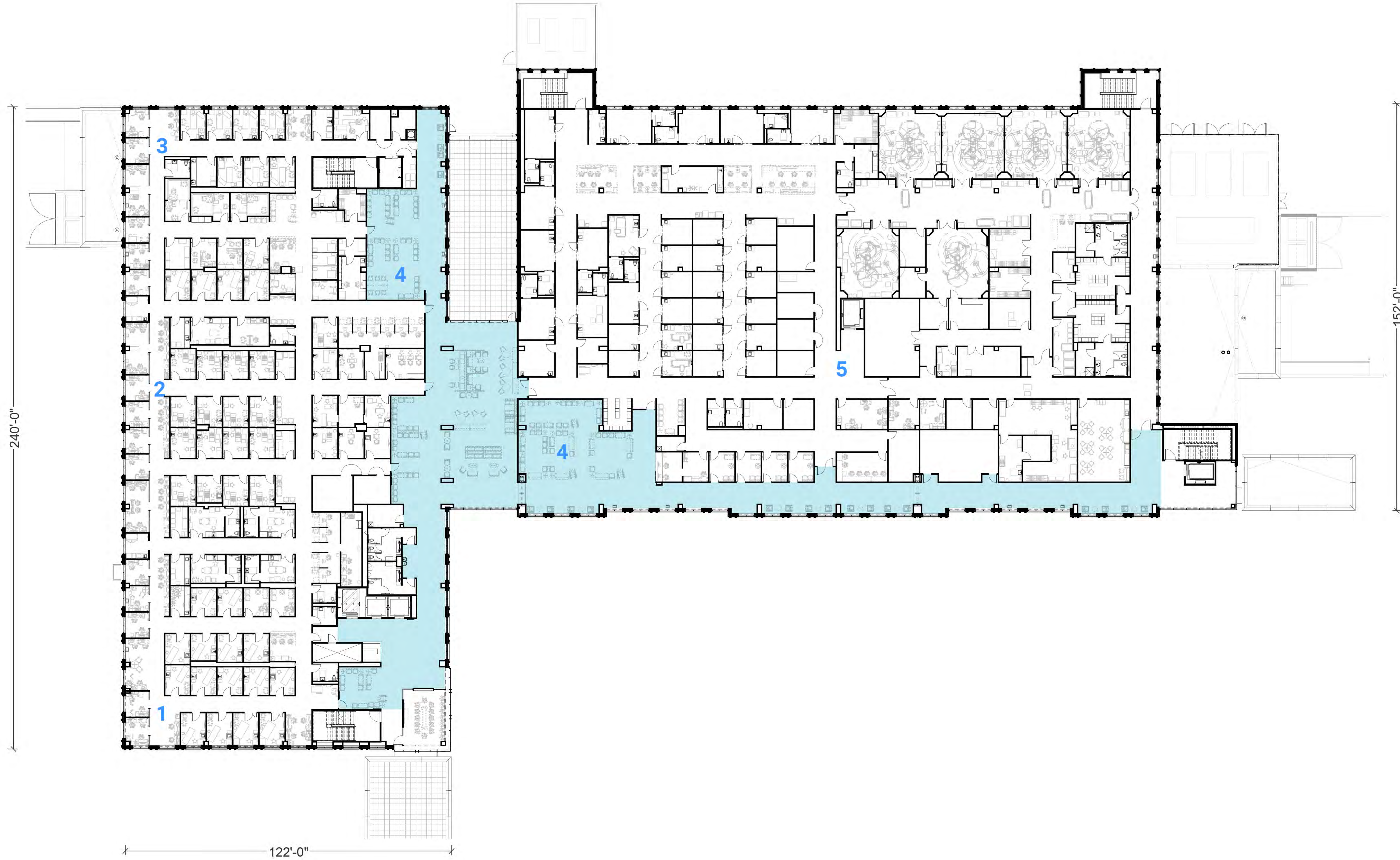
- | | |
|------------------------|----------------------------|
| 1 REGISTRATION / LOBBY | 6 PHYSICAL THERAPY / REHAB |
| 2 LAB | 7 URGENT CARE |
| 3 ORTHO | 8 PHARMACY |
| 4 BUILDING SERVICES | 9 CSS / HLD |
| 5 IMAGING | |

0 20'  01 FIRST FLOOR

NO.	DATE	FINAL DEVELOPMENT PLAN DESCRIPTION
REVISIONS		
OSU PROJECT NUMBER 25-18138-00 / OSU-180636-1		
OSU WMC Regional Amb Facilities - Dublin		
PREPARED FOR THE OHIO STATE UNIVERSITY FACILITIES OPERATION AND DEVELOPMENT COLUMBUS, OHIO		
PREPARED BY DLR Group Westlake Reed Leskosky 1422 EUCLID AVENUE, SUITE 300 CLEVELAND, OHIO 44115		
FIRST FLOOR PLAN		SHEET NUMBER A-001
OSU PROJ. NO. OSU-180636-1	FILE NAME	DRAWN BY Author
		DATE 02/14/20

PRELIMINARY
NOT FOR CONSTRUCTION

122'-0" 25'-0" 418'-0" 271'-0"



- 1 SURGERY SPECIALTIES
- 2 OPHTHALMOLOGY
- 3 ENT & ALLERGY
- 4 REGISTRATION / LOBBY
- 5 ASC

0 20'



02 SECOND FLOOR

PRELIMINARY
NOT FOR CONSTRUCTION

NO.	DATE	DESCRIPTION
	02/14/20	FINAL DEVELOPMENT PLAN
REVISIONS		
OSU PROJECT NUMBER 25-18138-00 / OSU-180636-1		
OSU WMC Regional Amb Facilities - Dublin		
PREPARED FOR THE OHIO STATE UNIVERSITY FACILITIES OPERATION AND DEVELOPMENT COLUMBUS, OHIO		
PREPARED BY DLR Group Westlake Reed Leskosky 1422 EUCLID AVENUE, SUITE 300 CLEVELAND, OHIO 44115		
SECOND FLOOR PLAN		SHEET NUMBER A-002
OSU PROJ. NO. OSU-180636-1	FILE NAME	DRAWN BY Author
		DATE 02/14/20

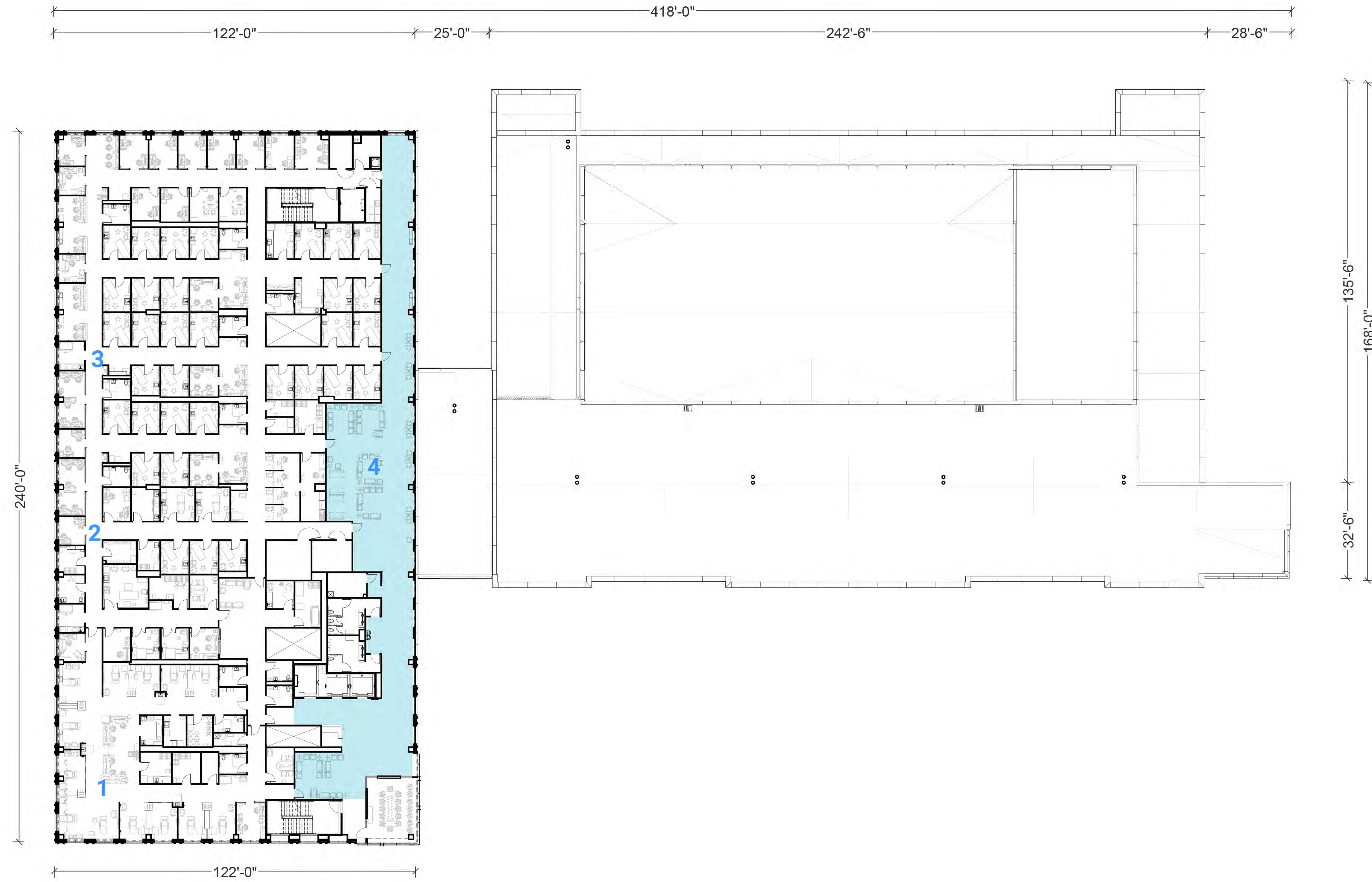


03 THIRD FLOOR


- 1 DERMATOLOGY
- 2 OB / GYN
- 3 FAMILY MEDICINE
- 4 REGISTRATION / LOBBY
- 5 MECHANICAL ROOM
- 6 ENDOSCOPY

PRELIMINARY
NOT FOR
CONSTRUCTION

NO.	DATE	FINAL DEVELOPMENT PLAN DESCRIPTION
REVISIONS		
OSU PROJECT NUMBER 25-18138-00 / OSU-180636-1		
OSU WMC Regional Amb Facilities - Dublin		
PREPARED FOR THE OHIO STATE UNIVERSITY FACILITIES OPERATION AND DEVELOPMENT COLUMBUS, OHIO		
PREPARED BY DLR Group Westlake Reed Leskosky 1422 EUCLID AVENUE, SUITE 300 CLEVELAND, OHIO 44115		
THIRD FLOOR PLAN		SHEET NUMBER A-003
OSU PROJ. NO. OSU-180636-1	FILE NAME	DRAWN BY Author
		DATE 02/14/20

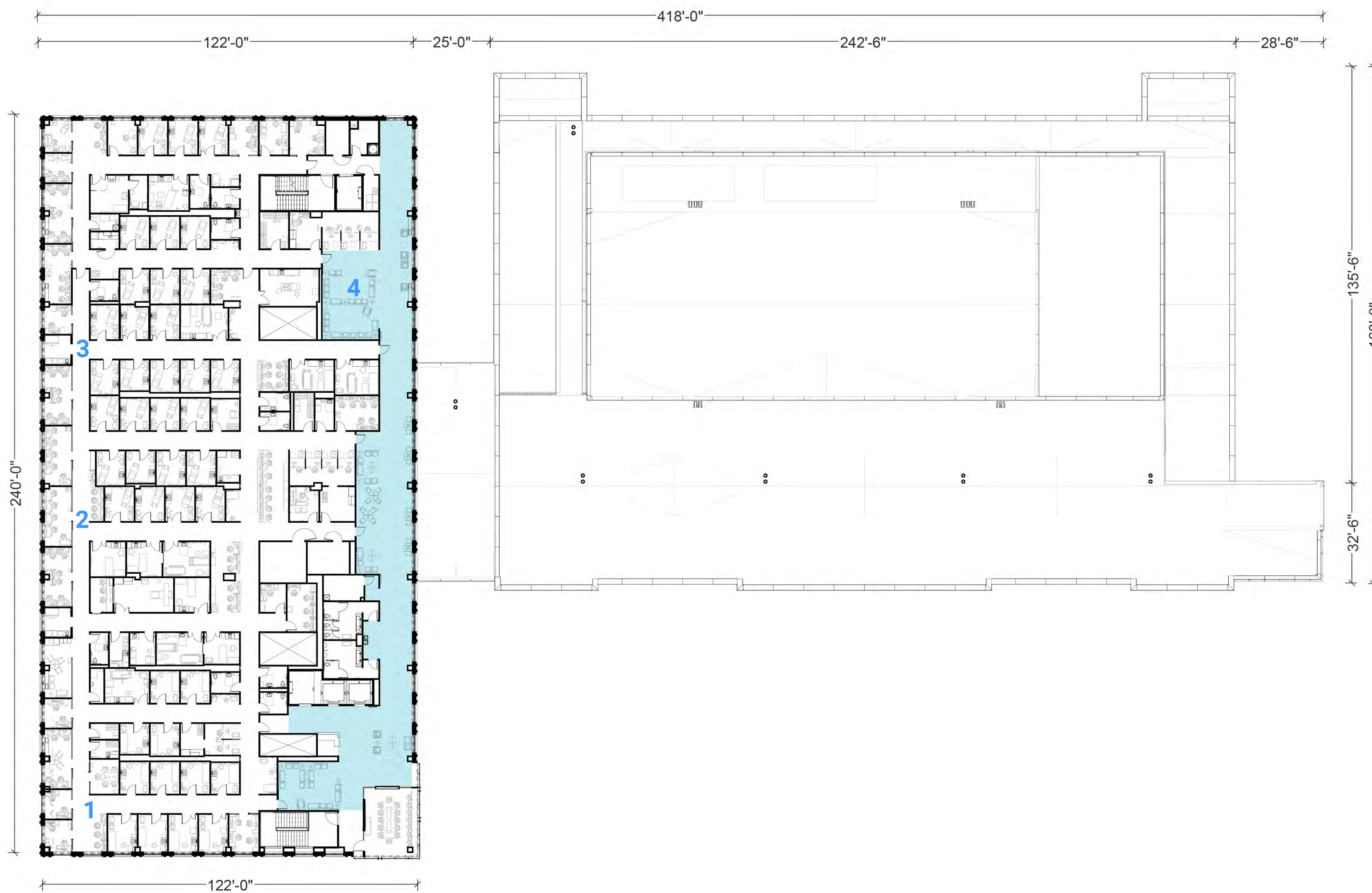


- 1 INFUSION
- 2 PFT
- 3 INTERNAL MEDICINE
- 4 REGISTRATION / LOBBY

0 20'  04 FOURTH FLOOR

NO.	DATE	DESCRIPTION
02/14/20 FINAL DEVELOPMENT PLAN		
REVISIONS		
OSU PROJECT NUMBER 25-18138-00 / OSU-180636-1		
OSU WMC Regional Amb Facilities - Dublin		
PREPARED FOR THE OHIO STATE UNIVERSITY FACILITIES OPERATION AND DEVELOPMENT COLUMBUS, OHIO		
PREPARED BY DLR Group Westlake Reed Leskosky 1422 EUCLID AVENUE, SUITE 300 CLEVELAND, OHIO 44115		
FOURTH FLOOR PLAN		SHEET NUMBER A-004
OSU PROJ. NO. OSU-180636-1	FILE NAME	DRAWN BY Author
		DATE 02/14/20

PRELIMINARY
NOT FOR CONSTRUCTION

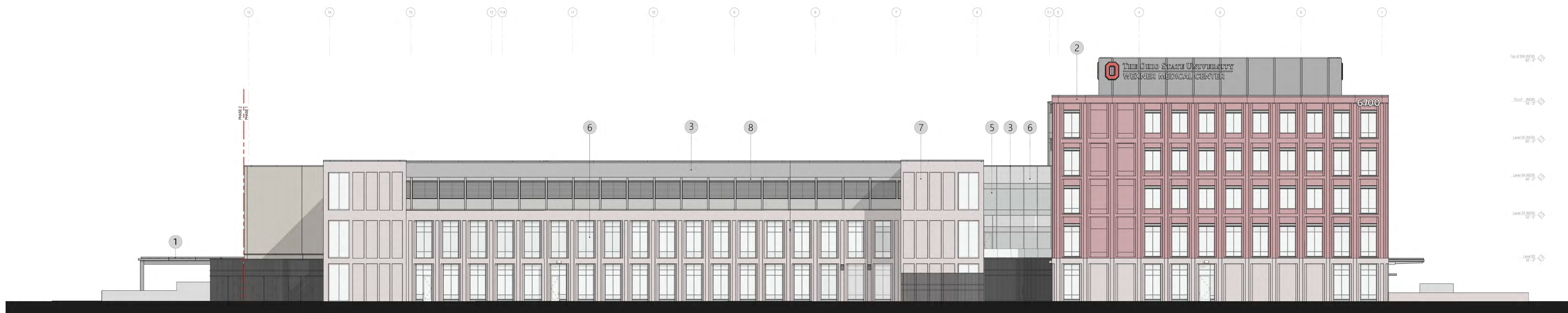


- 1 NEUROLOGY
- 2 HEART AND VASCULAR CENTER
- 3 DIAGNOSTIC ONCOLOGY
- 4 REGISTRATION / LOBBY

0 20'  05 FIFTH FLOOR

PRELIMINARY
NOT FOR
CONSTRUCTION

NO.	DATE	DESCRIPTION
REVISIONS		
OSU PROJECT NUMBER 25-18138-00 / OSU-180636-1		
OSU WMC Regional Amb Facilities - Dublin		
PREPARED FOR THE OHIO STATE UNIVERSITY FACILITIES OPERATION AND DEVELOPMENT COLUMBUS, OHIO		
PREPARED BY DLR Group Westlake Reed Leskosky 1422 EUCLID AVENUE, SUITE 300 CLEVELAND, OHIO 44115		
FIFTH FLOOR PLAN		SHEET NUMBER A-005
OSU PROJ. NO. OSU-180636-1	FILE NAME	DRAWN BY Author
		DATE 02/14/20



NORTH ELEVATION



EAST ELEVATION

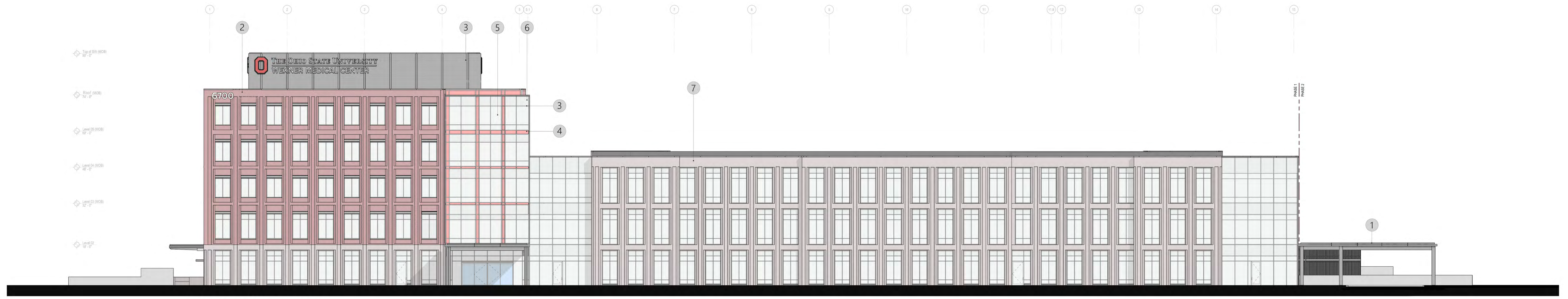
NOTES

1. ALUMINUM 3 - ENTRANCE CANOPIES
2. FACEBRICK
3. ALUMINUM 1 - CURTAIN WALL MULLIONS & PENTHOUSE ENCLOSURES
4. ALUMINUM 2 - INFILL PANELS
5. INSULATED LOW-E GLAZING
6. SPANDREL GLAZING
7. PRECAST CONCRETE PANELS
8. CONTINUOUS WALL LOUVERS WITH CONCEALED MULLIONS

0 20'

NO.	DATE	DESCRIPTION
FINAL DEVELOPMENT PLAN		
REVISIONS		
OSU PROJECT NUMBER 25-18138-00 / OSU-180636-1		
OSU WMC Regional Amb Facilities - Dublin		
PREPARED FOR THE OHIO STATE UNIVERSITY FACILITIES OPERATION AND DEVELOPMENT COLUMBUS, OHIO		
PREPARED BY DLR Group Westlake Reed Leskosky 1422 EUCLID AVENUE, SUITE 300 CLEVELAND, OHIO 44115		
EXTERIOR ELEVATIONS		SHEET NUMBER A-006
OSU PROJ. NO. OSU-180636-1	FILE NAME	DRAWN BY Author
		DATE 02/14/20

PRELIMINARY
NOT FOR
CONSTRUCTION



SOUTH ELEVATION



WEST ELEVATION

NOTES

1. ALUMINUM 3 - ENTRANCE CANOPIES
2. FACEBRICK
3. ALUMINUM 1 - CURTAIN WALL MULLIONS & PENTHOUSE ENCLOSURES
4. ALUMINUM 2 - INFILL PANELS
5. INSULATED LOW-E GLAZING
6. SPANDREL GLAZING
7. PRECAST CONCRETE PANELS



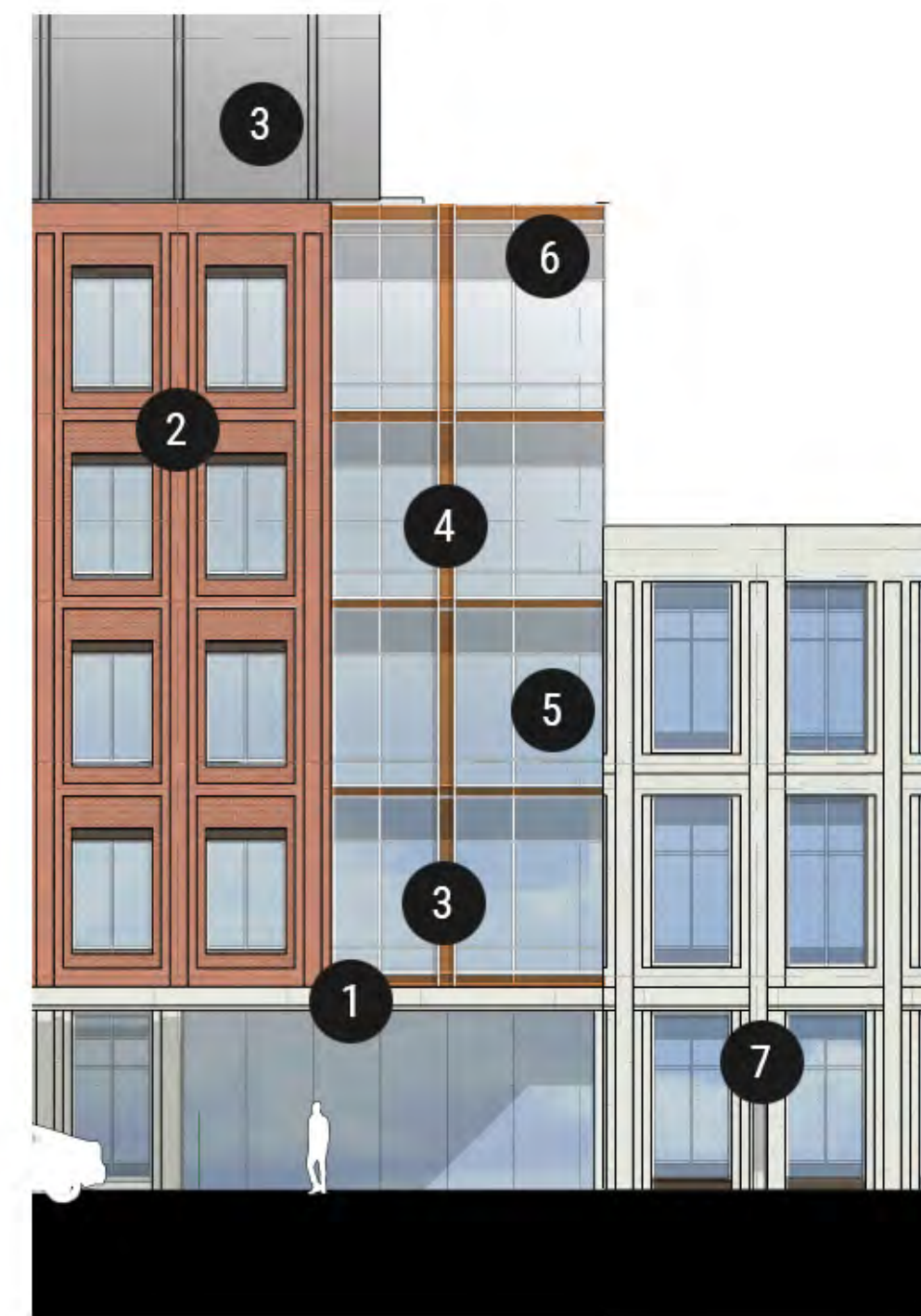
PRELIMINARY
NOT FOR
CONSTRUCTION

NO.	DATE	FINAL DEVELOPMENT PLAN	DESCRIPTION
REVISIONS			
OSU PROJECT NUMBER 25-18138-00 / OSU-180636-1			
OSU WMC Regional Amb Facilities - Dublin			
PREPARED FOR THE OHIO STATE UNIVERSITY FACILITIES OPERATION AND DEVELOPMENT COLUMBUS, OHIO			
PREPARED BY DLR Group Westlake Reed Leskosky 1422 EUCLID AVENUE, SUITE 300 CLEVELAND, OHIO 44115			
EXTERIOR ELEVATIONS			SHEET NUMBER A-007
OSU PROJ. NO. OSU-180636-1	FILE NAME	DRAWN BY Author	DATE 02/14/20

EXTERIOR MATERIALS SCHEDULE

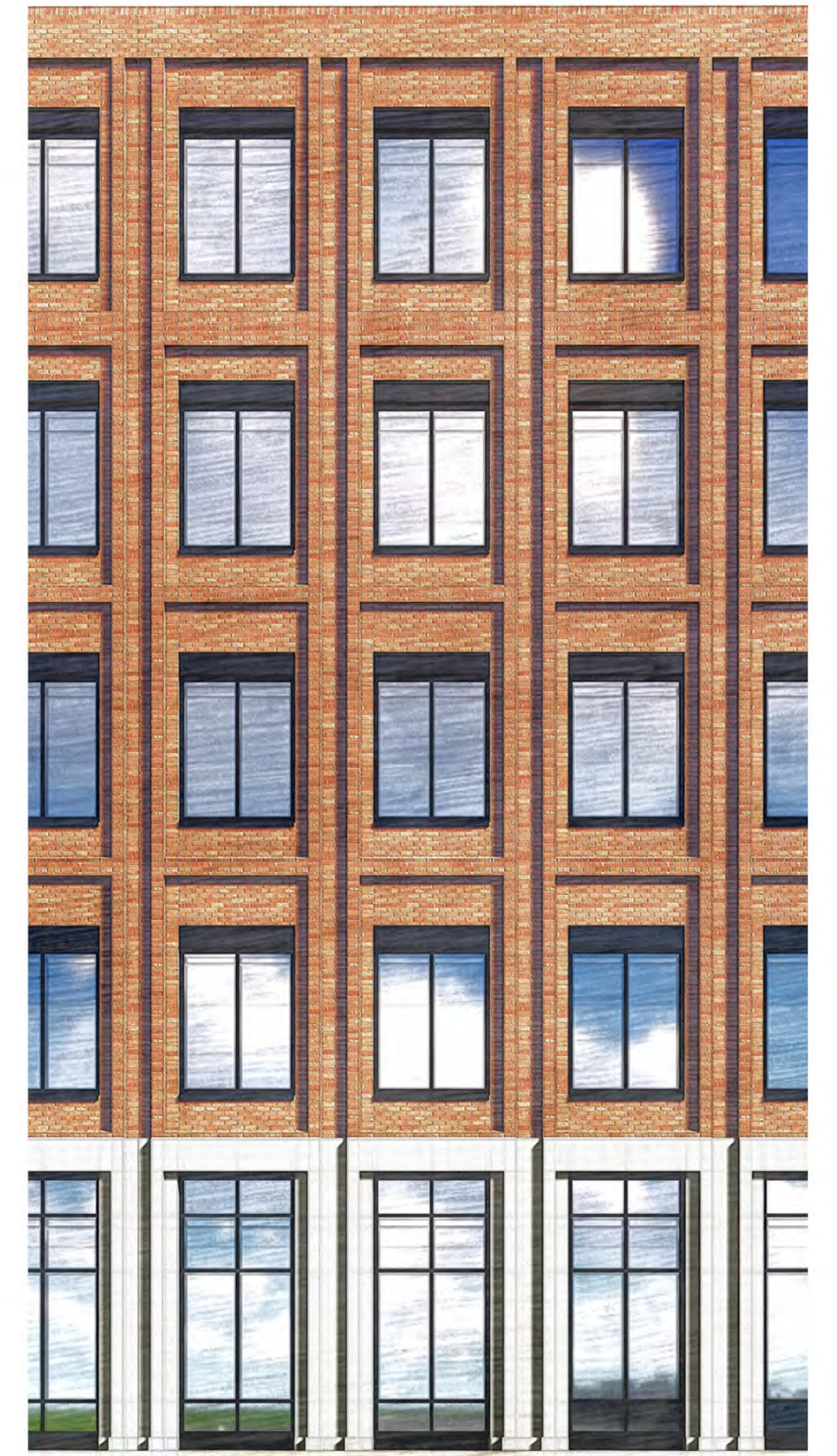
OSU WMC Regional Ambulatory Facility
OSU-180636

Material	Description	Comments
Window Wall System to punched openings	Kawneer Metro View FG 501 T or FG 601 T window wall or equivalent approved by Architect.	Glazing: see below Finish: PPG UC106693F Duranar Sunstorm Bistro Bronze Window wall system will incorporate profiled aluminum pressing to window head Back of spandrel glazing will be insulated
Curtain Wall System to façade corners, connectors	Kawneer 1600 System or equivalent approved by Architect.	Projecting decorative architectural face caps to vertical mullions at corner façade, standard caps elsewhere System will incorporate vertical aluminum panels at 10' modules at corner facade and aluminum pressing to CW base Back of spandrel glazing will be insulated Glazing: see below Finish (Mullions, Sill, Head, Coping): PPG UC106693F Duranar Sunstorm Bistro Bronze Finish (Curtainwall Metal Panel Infill): PPG UC106696F Duranar Sunstorm Russet Pearl
Glazing	Vision Triple silver coating low-e IGU Required performance: VLT: 62% UV: 5% REFL (out): 10% REFL (in): 10% U-value (W): 0.29 U-value (S): 0.26 SHGC: 0.29	Basis of design: Viracon VNE1-63 Basis of design (spandrel): Viracon VNE1-63 w/ V933 - Warm Gray Viraspan #4
Face Brick	Glen-Gery extruded OSU 1963 (Basis of Design)	Aluminum Coping Finish: PPG UC106693F Duranar Sunstorm Bistro Bronze
Mortar	Brixment Stock Colors - Mortar M-10 Tan	Lehigh Hanson 972.653.5500
Precast panels	Architectural quality precast system to one storey base of brick façade, three storey panels to ASC Precast finish is to match limestone in appearance	Architect's sample to match: High Concrete Group Sample HC-01719
Aluminum Composite Metal Wall Panels (Loading Docks)	Factory-formed and assembled metal composite wall panels fabricated from 2.0, 0.020-inch thick coil-coated aluminum sheet facings bonded to a solid, extruded thermoplastic core	Basis of Design: 3A Composites Alucobond PE, Rout and Return Dry Seal Finish: PPG UC106693F Duranar Sunstorm Bistro Bronze
Penthouse metal enclosure	Profiled metal panels fixed to steel stud backing wall with concealed fasteners	Basis of design: Centria Concept Series, CS 660 profile to lower part of enclosure, CS 210 profile to upper set back. Equivalent systems are acceptable on submission for approval by the Architect: DMI HWP4 12, DMI HWP4 12 Finish: PPG UC106692F Duranar Sunstorm Bistro Bronze (Aluminum Coping to match)
Generator screen wall enclosure/ Chiller enclosure/ Connector rainscreen	Aluminum tube fabrication w/ structural steel backup Frameless access gates to match	Finish: PPG UC106693F Duranar Sunstorm Bistro Bronze
Canopy/colonnade structure	Exposed steel frame protected with anti-corrosion coating system and architectural top coat Columns to be raised on concrete bases Fasteners to be concealed or countersunk, welds to be ground smooth	Columns and beams to porte cochere will be concrete-filled to provide fire rating Finish: PPG UC106689F Duranar Sunstorm Cashmere Pearl
Canopy/colonnade edge profile and soffit	Aluminum pressing edge profile to roof edge with concealed fasteners, finish: two-coat 70% PVDF resin coating system with mica, custom color to match colonnade structure Canopy soffit: self-colored stucco on cement board system, color to be confirmed by Architect	Finish: PPG UC106689F Duranar Sunstorm Cashmere Pearl
Canopy/colonnade roof	TPO system on plywood and metal profile sheet deck	Basis of Design: Firestone UltraPlyT TPO - 60 mil - Gray
Canopy/ colonnade rainwater downpipes	Aluminum finish: two-coat 70% PVDF resin coating system with mica, custom color to match colonnade structure	
Cast in Place Concrete Site Walls (Loading Docks)	Cast in place concrete retaining walls	Finish: Architectural finish, color and texture to match precast
Concrete Roof Pavers (2nd Floor Terrace/ Main Porte Cochere)	Concrete roof paving system on pedestals	Finish: Color to match precast
Handrails (Stairs & Ramps at Loading)	Guard and handrails at loading dock and loading dock stairs and ramps	Black finish
Bollards (Traffic control @ loading)	Square removable bollard to prevent incursion of vehicles	Black finish w/ white reflective tapes
Pole-mounted pedestrian light fixtures	14' Bega LED Pole top luminaires	True Black' Finish: Lithonia Black RCO2304P4B Black, Super Durable (DBLXD)
Light Bollard	41 1/2' Bega LED Bollard 84 683	'True Black' Finish: Lithonia Black RCO2304P4B Black, Super Durable (DBLXD)
Parking Lot Lighting	Gardco Gullwing	Finish: Black from manufacturer's standard options
Exterior wall-mounted plumbing fixtures	Overflow Wall Outlet: Downspout Nozzle 'Cow's Tongue' type FDCs Test Header Wall Hydrants	Finish: Nickel Bronze



OSU WEXNER MEDICAL CENTER RAF
DUBLIN, OH
EXTERIOR MATERIALS

-  1. ALUMINUM 3 ENTRANCE CANOPIES
-  2. FACE BRICK
-  3. ALUMINUM 1 MULLIONS & PENTHOUSE ENCLOSURES
-  4. ALUMINUM 2 INFILL PANELS
-  5. INSULATED, LOW-E GLAZING
-  6. SPANDREL GLAZING
-  7. PRECAST CONCRETE PANELS

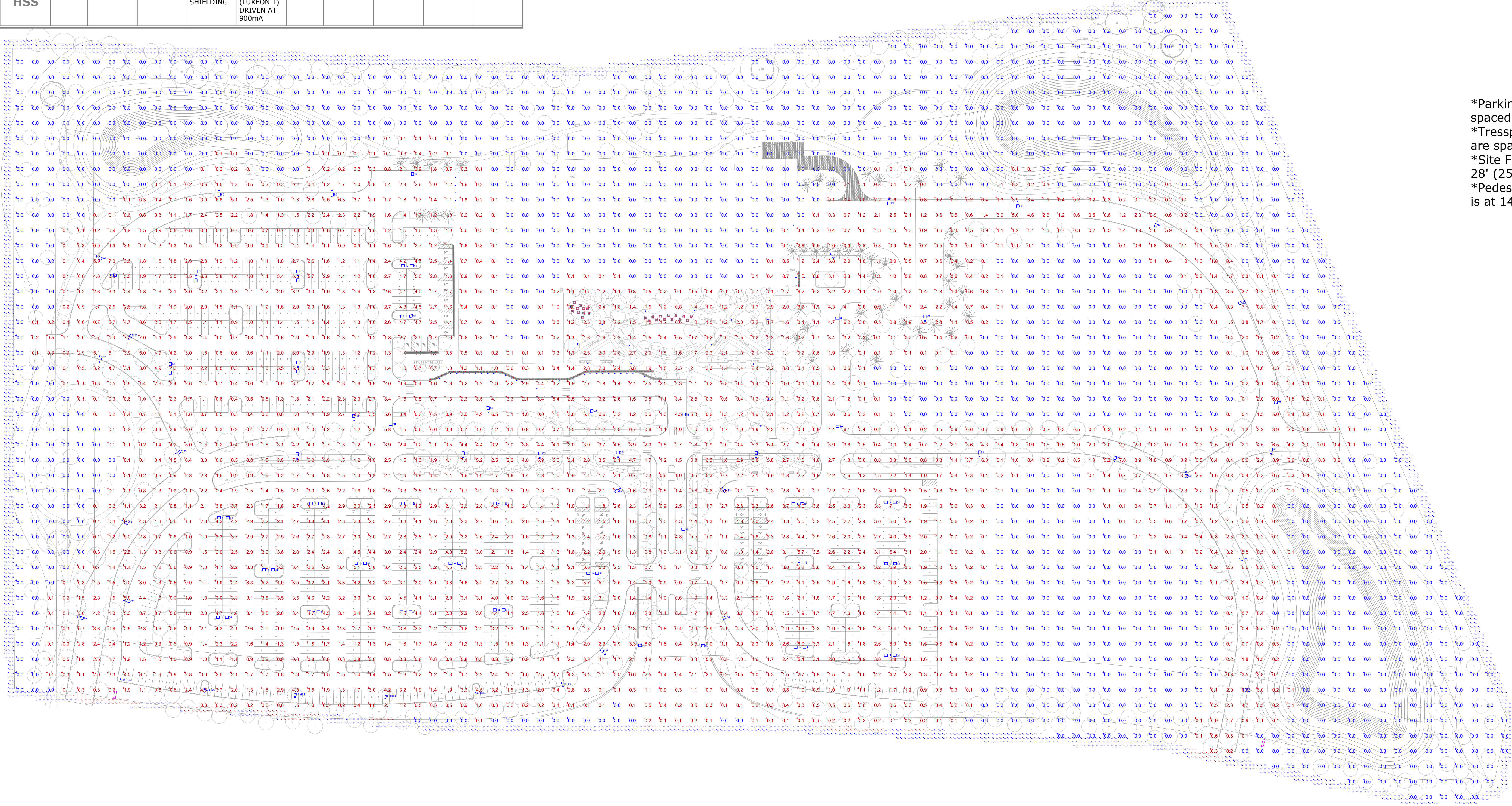


PRELIMINARY
NOT FOR CONSTRUCTION

NO.	DATE	FINAL DEVELOPMENT PLAN DESCRIPTION
REVISIONS		
OSU PROJECT NUMBER 25-18138-00 / OSU-180636-1		
OSU WMC Regional Amb Facilities - Dublin		
PREPARED FOR THE OHIO STATE UNIVERSITY FACILITIES OPERATION AND DEVELOPMENT COLUMBUS, OHIO		
PREPARED BY DLR Group Westlake Reed Leskosky 1422 EUCLID AVENUE, SUITE 300 CLEVELAND, OHIO 44115		
FACADE COMPOSITION & MATERIALS		SHEET NUMBER A-008
OSU PROJ. NO. OSU-180636-1	FILE NAME	DRAWN BY Author
		DATE 02/14/20

Symbol	Label	Quantity	Manufacturer	Catalog Number	Description	Lamp	Number Lamps	Filename	Lumens Per Lamp	Light Loss Factor	Wattage
□	S2	33	PHILIPS GARDCO	GL18-2-180LA-6490-NW	PHILIPS GULLWING LED GL18	(4) LEDGINE 3.1 LIGHT ARRAYS OF 16 LEDS (LUXEON T) DRIVEN AT 900mA	1	GL18-2-180LA-6490-NW.IES	17783	0.9	180
□	S3	10	PHILIPS GARDCO	GL18-4-180LA-6490-NW	PHILIPS GULLWING LED GL18	(4) LEDGINE 3.1 LIGHT ARRAYS OF 16 LEDS (LUXEON T) DRIVEN AT 900mA	1	GL18-4-180LA-6490-NW.IES	16779	0.9	180
□	S1	24	PHILIPS GARDCO	GL18-4-180LA-6490-NW	PHILIPS GULLWING LED GL18	(4) LEDGINE 3.1 LIGHT ARRAYS OF 16 LEDS (LUXEON T) DRIVEN AT 900mA	1	GL18-4-180LA-6490-NW.IES	16779	0.9	360
○	RE2	20	BEGA Converted by LUMCat V 30.11.2016 / H.R.		84402K3	LED 47,4W	1	(RE2) - 84402.ies	3694	0.9	56
○	RE6	41	BEGA Converted by LUMCat V 10.07.2017 / H.R.		84 683 K3	LED 16,5W	1	(RE6) - 84683.ies	1167	0.9	20
○	S4	8	Troy-CSL Lighting Inc	A4-30w-40k-30A*	Acrobat w/ 30 degree optic		1	S4 - A4-30w-40k-30*.ies	2474	0.9	29.99
○	RE1	12	Troy-CSL Lighting Inc	A3-10w-40k-50A*	Acrobat w/ 50 degree optic		1	RE1 - A3-10w-40k-50*.ies	921	0.9	10.01
□	S2-HSS	6	SIGNIFY GARDCO	GL18-2-180LA-6490-NW-HS	GULLWING LED GL18 WITH EXTERNAL SHIELDING	(4) LEDGINE 3.1 LIGHT ARRAYS OF 16 LEDS (LUXEON T) DRIVEN AT 900mA	1	gl18-2-180la-6490-nw-hs.ies	12424	0.9	180

Statistics						
Description	Symbol	Avg	Max	Min	Max/Min	Avg/Min
Overall	+	1.0 fc	9.4 fc	0.0 fc	N/A	N/A
Tresspass	+	0.0 fc	0.2 fc	0.0 fc	N/A	N/A



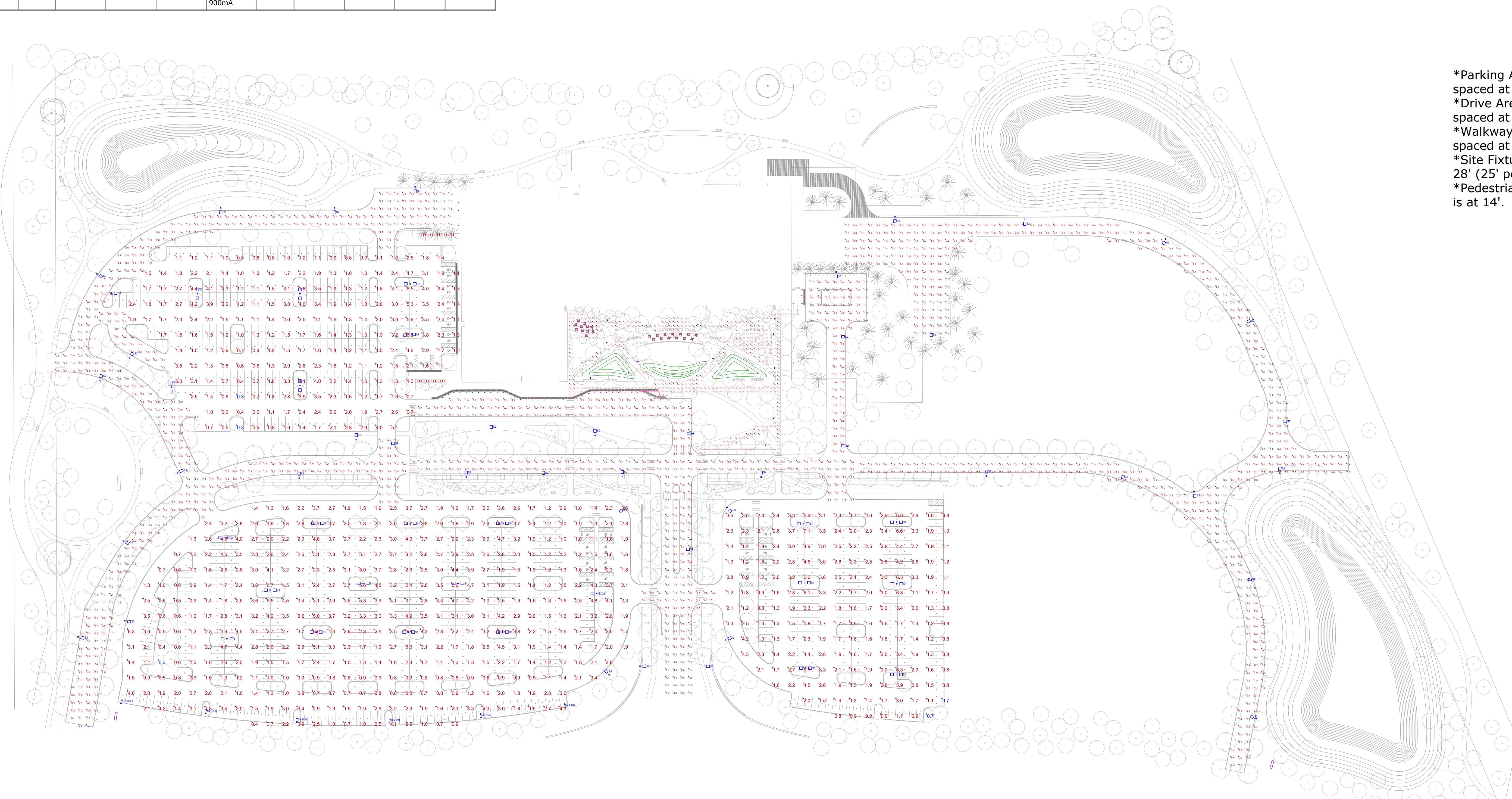
*Parking Area Calculation Points are spaced at 20'x20'
 *Tresspass Area Calculation Points are spaced at 5'x5'
 *Site Fixture Mounting Height is at 28' (25' pole on 3' base)
 *Pedestrian Fixture Mounting Height is at 14'.

PRELIMINARY
 NOT FOR CONSTRUCTION

02/14/20	FINAL DEVELOPMENT PLAN
NO.	DATE
DESCRIPTION	
REVISIONS	
OSU PROJECT NUMBER	25-18138-00 / OSU-180636-1
OSU WMC Regional Amb Facilities - Dublin	
PREPARED FOR THE OHIO STATE UNIVERSITY FACILITIES OPERATION AND DEVELOPMENT COLUMBUS, OHIO	
PREPARED BY DLR Group Westlake Reed Leskosky 1422 EUCLID AVENUE, SUITE 300 CLEVELAND, OHIO 44115	
SITE LIGHTING - TRESSPASS	
OSU PROJ. NO	OSU-180636-1
FILE NAME	
DRAWN BY	Author
DATE	02/14/20
SHEET NUMBER E-001	

Symbol	Label	Quantity	Manufacture	Catalog Number	Description	Lamp	Number Lamps	Filename	Lumens Per Lamp	Light Loss Factor	Wattage
□	S2	33	PHILIPS GARDCO	GL18-2-180LA-6490-NW	PHILIPS GULLWING LED GL18	(4) LEDGINE 3.1 LIGHT ARRAYS OF 16 Leds (LUXEON T) DRIVEN AT 900mA	1	GL18-2-180LA-6490-NW.IES	17783	0.9	180
□	S3	10	PHILIPS GARDCO	GL18-4-180LA-6490-NW	PHILIPS GULLWING LED GL18	(4) LEDGINE 3.1 LIGHT ARRAYS OF 16 Leds (LUXEON T) DRIVEN AT 900mA	1	GL18-4-180LA-6490-NW.IES	16779	0.9	180
□	S1	24	PHILIPS GARDCO	GL18-4-180LA-6490-NW	PHILIPS GULLWING LED GL18	(4) LEDGINE 3.1 LIGHT ARRAYS OF 16 Leds (LUXEON T) DRIVEN AT 900mA	1	GL18-4-180LA-6490-NW.IES	16779	0.9	360
○	RE2	20	BEGA (Converted by LUMCat V 30.11.2016 / H.R.)		84402K3	LED 47,4W	1	(RE2) - 84402.ies	3694	0.9	56
○	RE6	41	BEGA (Converted by LUMCat V 10.07.2017 / H.R.)		84 683 K3	LED 16,5W	1	(RE6) - 84683.ies	1167	0.9	20
○	S4	8	Troy-CSL Lighting Inc	A4-30w-40k-30A°	Acrobat w/ 30 degree optic		1	S4 - A4-30w-40k-30°.ies	2474	0.9	29.99
○	RE1	12	Troy-CSL Lighting Inc	A3-10w-40k-50A°	Acrobat w/ 50 degree optic		1	RE1 - A3-10w-40k-50°.ies	921	0.9	10.01
□	S2-HSS	6	SIGNIFY GARDCO	GL18-2-180LA-6490-NW-HS	GULLWING LED GL18 WITH EXTERNAL SHIELDING	(4) LEDGINE 3.1 LIGHT ARRAYS OF 16 Leds (LUXEON T) DRIVEN AT 900mA	1	gl18-2-180la-6490-nw-hs.ies	12424	0.9	180

Description	Symbol	Avg	Max	Min	Max/Min	Avg/Min
Central Drive Areas	+	2.4 fc	9.5 fc	0.4 fc	23.8:1	6.0:1
East Central Dropoff Area	+	3.1 fc	9.1 fc	0.9 fc	10.1:1	3.4:1
Eastern Drives	+	2.1 fc	7.7 fc	0.3 fc	25.7:1	7.0:1
Main Entry Walkways	+	1.9 fc	4.9 fc	0.3 fc	16.3:1	6.3:1
Northwest Drive between Drives and parking	+	4.1 fc	8.0 fc	2.0 fc	4.0:1	2.1:1
Northwest Parking Area	+	1.9 fc	6.8 fc	0.3 fc	22.7:1	6.3:1
Southwest Parking Area	+	2.3 fc	7.1 fc	0.7 fc	10.1:1	3.3:1
Southwest Parking Area	+	2.4 fc	6.9 fc	0.3 fc	23.0:1	8.0:1
Western Drive Areas	+	2.5 fc	7.6 fc	0.0 fc	N/A	N/A



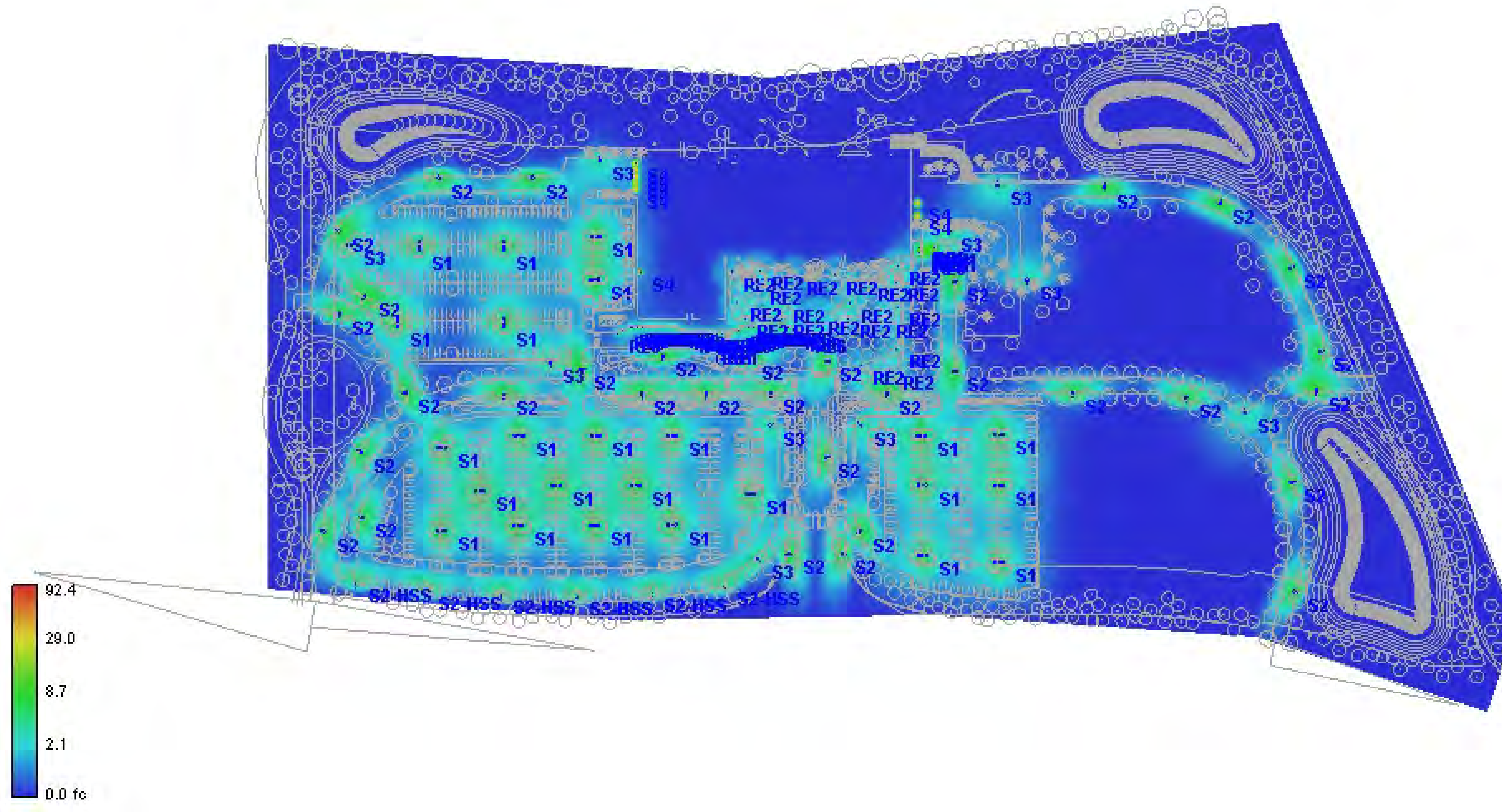
*Parking Area Calculation Points are spaced at 20'x20'
 *Drive Area Calculation Points are spaced at 10'x10'
 *Walkway Calculation Points are spaced at 5'x5'
 *Site Fixture Mounting Height is at 28' (25' pole on 3' base)
 *Pedestrian Fixture Mounting Height is at 14'.

PRELIMINARY
 NOT FOR CONSTRUCTION

02/14/20	FINAL DEVELOPMENT PLAN
NO.	DATE
DESCRIPTION	
REVISIONS	
OSU PROJECT NUMBER	25-18138-00 / OSU-180636-1
OSU WMC Regional Amb Facilities - Dublin	
PREPARED FOR THE OHIO STATE UNIVERSITY FACILITIES OPERATION AND DEVELOPMENT COLUMBUS, OHIO	
PREPARED BY DLR Group Westlake Reed Leskosky 1422 EUCLID AVENUE, SUITE 300 CLEVELAND, OHIO 44115	
SITE LIGHTING - HARDSCAPE	
OSU PROJ. NO	OSU-180636-1
FILE NAME	
DRAWN BY	Author
DATE	02/14/20
SHEET NUMBER	E-002

Schedule											
Symbol	Label	Quantity	Manufacture	Catalog Number	Description	Lamp	Number Lamps	Filename	Lumens Per Lamp	Light Loss Factor	Wattage
□	S2	33	PHILIPS GARDCO	GL18-2-180LA-6490-NW	PHILIPS GULLWING LED GL18	(4) LEDGINE 3.1 LIGHT ARRAYS OF 16 LEDS (LUXEON T) DRIVEN AT 900mA	1	GL18-2-180LA-6490-NW.IES	17783	0.9	180
□	S3	10	PHILIPS GARDCO	GL18-4-180LA-6490-NW	PHILIPS GULLWING LED GL18	(4) LEDGINE 3.1 LIGHT ARRAYS OF 16 LEDS (LUXEON T) DRIVEN AT 900mA	1	GL18-4-180LA-6490-NW.IES	16779	0.9	180
□	S1	24	PHILIPS GARDCO	GL18-4-180LA-6490-NW	PHILIPS GULLWING LED GL18	(4) LEDGINE 3.1 LIGHT ARRAYS OF 16 LEDS (LUXEON T) DRIVEN AT 900mA	1	GL18-4-180LA-6490-NW.IES	16779	0.9	360
○	RE2	20	BEGA Converted by LUMCat V 30.11.2016 / H.R.	84402K3	LED 47,4W		1	(RE2) - 84402.ies	3694	0.9	56

Schedule											
Symbol	Label	Quantity	Manufacture	Catalog Number	Description	Lamp	Number Lamps	Filename	Lumens Per Lamp	Light Loss Factor	Wattage
○	RE6	41	BEGA Converted by LUMCat V 10.07.2017 / H.R.	84 683 K3	LED 16,5W		1	(RE6) - 84683.ies	1167	0.9	20
○	S4	8	Troy-CSL Lighting Inc	A4-30w-40k-30A*	Acrobat w/ 30 degree optic		1	S4 - A4-30w-40k-30*.ies	2474	0.9	29.99
○	RE1	12	Troy-CSL Lighting Inc	A3-10w-40k-50A*	Acrobat w/ 50 degree optic		1	RE1 - A3-10w-40k-50*.ies	921	0.9	10.01
○	S2-HSS	6	SIGNIFY GARDCO	GL18-2-180LA-6490-NW-HS	GULLWING LED GL18 WITH EXTERNAL SHIELDING	(4) LEDGINE 3.1 LIGHT ARRAYS OF 16 LEDS (LUXEON T) DRIVEN AT 900mA	1	gl18-2-180la-6490-nw-hs.ies	12424	0.9	180



02/14/20	FINAL DEVELOPMENT PLAN
NO.	DESCRIPTION
DATE	
REVISIONS	
OSU PROJECT NUMBER	25-18138-00 / OSU-180636-1
OSU WMC Regional Amb Facilities - Dublin	
PREPARED FOR THE OHIO STATE UNIVERSITY FACILITIES OPERATION AND DEVELOPMENT COLUMBUS, OHIO	
PREPARED BY DLR Group Westlake Reed Leskosky 1422 EUCLID AVENUE, SUITE 300 CLEVELAND, OHIO 44115	
SITE LIGHTING - ILLUMINANCE	
OSU PROJ. NO.	FILE NAME
OSU-180636-1	
DRAWN BY	DATE
Author	02/14/20
SHEET NUMBER E-003	

PRELIMINARY
NOT FOR
CONSTRUCTION

S1



Ordering guide table for S1 with columns: Part#, Controls, Mounting, Optics, Wattage, LED Color, Voltage, Finish, and Options. Includes a detailed table with various specifications and a small site plan diagram.

- 1. Available in 120-277V only. 2. Available in 120-277V only. 3. MDS or APD-MDS luminaires require one motion sensor per pole, ordered separately. See page 5 for accessories. 4. Not available with MDS or APD-MDS. 5. LED LUCE LCLP wireless system not configurable with PC-PDS POE options. See page 5 for more info. 6. Luminaire door frame and optic assembly provided standard without glass lens. Specify CL for custom clear glass lens. 7. Not available in 120V mounting configurations. 8. SW option is not available with any other control options with the exception of SW-MDS, SW-MHS and SW-MMS motion response options. 9. MDS and APD-MDS luminaires require one motion sensor per pole, ordered separately. See page 5 for accessories. 10. MDS and APD-MDS luminaires require one motion sensor per pole, ordered separately. See page 5 for accessories. 11. Not available with MDS or APD-MDS. 12. LUCE LCLP wireless system not configurable with PC-PDS POE options. See page 5 for more info.

S2



Ordering guide table for S2 with columns: Part#, Controls, Mounting, Optics, Wattage, LED Color, Voltage, Finish, and Options. Includes a detailed table with various specifications and a small site plan diagram.

- 1. Available in 120-277V only. 2. Available in 120-277V only. 3. MDS or APD-MDS luminaires require one motion sensor per pole, ordered separately. See page 5 for accessories. 4. Not available with MDS or APD-MDS. 5. LED LUCE LCLP wireless system not configurable with PC-PDS POE options. See page 5 for more info. 6. Luminaire door frame and optic assembly provided standard without glass lens. Specify CL for custom clear glass lens. 7. Not available in 120V mounting configurations. 8. SW option is not available with any other control options with the exception of SW-MDS, SW-MHS and SW-MMS motion response options. 9. MDS and APD-MDS luminaires require one motion sensor per pole, ordered separately. See page 5 for accessories. 10. MDS and APD-MDS luminaires require one motion sensor per pole, ordered separately. See page 5 for accessories. 11. Not available with MDS or APD-MDS. 12. LUCE LCLP wireless system not configurable with PC-PDS POE options. See page 5 for more info.

S2-HSS



Ordering guide table for S2-HSS with columns: Part#, Controls, Mounting, Optics, Wattage, LED Color, Voltage, Finish, and Options. Includes a detailed table with various specifications and a small site plan diagram.

- 1. Available in 120-277V only. 2. Available in 120-277V only. 3. MDS or APD-MDS luminaires require one motion sensor per pole, ordered separately. See page 5 for accessories. 4. Not available with MDS or APD-MDS. 5. LED LUCE LCLP wireless system not configurable with PC-PDS POE options. See page 5 for more info. 6. Luminaire door frame and optic assembly provided standard without glass lens. Specify CL for custom clear glass lens. 7. Not available in 120V mounting configurations. 8. SW option is not available with any other control options with the exception of SW-MDS, SW-MHS and SW-MMS motion response options. 9. MDS and APD-MDS luminaires require one motion sensor per pole, ordered separately. See page 5 for accessories. 10. MDS and APD-MDS luminaires require one motion sensor per pole, ordered separately. See page 5 for accessories. 11. Not available with MDS or APD-MDS. 12. LUCE LCLP wireless system not configurable with PC-PDS POE options. See page 5 for more info.

S3



Ordering guide table for S3 with columns: Part#, Controls, Mounting, Optics, Wattage, LED Color, Voltage, Finish, and Options. Includes a detailed table with various specifications and a small site plan diagram.

- 1. Available in 120-277V only. 2. Available in 120-277V only. 3. MDS or APD-MDS luminaires require one motion sensor per pole, ordered separately. See page 5 for accessories. 4. Not available with MDS or APD-MDS. 5. LED LUCE LCLP wireless system not configurable with PC-PDS POE options. See page 5 for more info. 6. Luminaire door frame and optic assembly provided standard without glass lens. Specify CL for custom clear glass lens. 7. Not available in 120V mounting configurations. 8. SW option is not available with any other control options with the exception of SW-MDS, SW-MHS and SW-MMS motion response options. 9. MDS and APD-MDS luminaires require one motion sensor per pole, ordered separately. See page 5 for accessories. 10. MDS and APD-MDS luminaires require one motion sensor per pole, ordered separately. See page 5 for accessories. 11. Not available with MDS or APD-MDS. 12. LUCE LCLP wireless system not configurable with PC-PDS POE options. See page 5 for more info.

S4

Gravity™ LED luminaire product page including electrical data table, features, materials, installation instructions, and frame construction details.

RE1

Gravity™ LED luminaire product page including electrical data table, features, materials, installation instructions, and frame construction details.

RE2

Gravity™ LED luminaire product page including electrical data table, features, materials, installation instructions, and frame construction details.

RE6

Gravity™ LED luminaire product page including electrical data table, features, materials, installation instructions, and frame construction details.

SITE LIGHTING - FIXTURE TYPES (SEE SUPPLEMENTARY MATERIALS FOR FULL CUTSHEETS)

PRELIMINARY NOT FOR CONSTRUCTION SHEET NUMBER E-004

Project management table with columns: NO., DATE, DESCRIPTION, and revision notes. Includes OSU PROJECT NUMBER and project details.

INTENSE LIGHTING 13261 W. Palmdale Avenue, CA 91361 1-877-438-1877 Fax 714-322-1882 For more lighting related information, go to www.intenselight.com. For pricing information, please email sales@intense.com. © 2011 Intense Lighting, LLC. All rights reserved. Note: This document is subject to change without notice.

INTENSE LIGHTING 13261 W. Palmdale Avenue, CA 91361 1-877-438-1877 Fax 714-322-1882 For more lighting related information, go to www.intenselight.com. For pricing information, please email sales@intense.com. © 2011 Intense Lighting, LLC. All rights reserved. Note: This document is subject to change without notice.