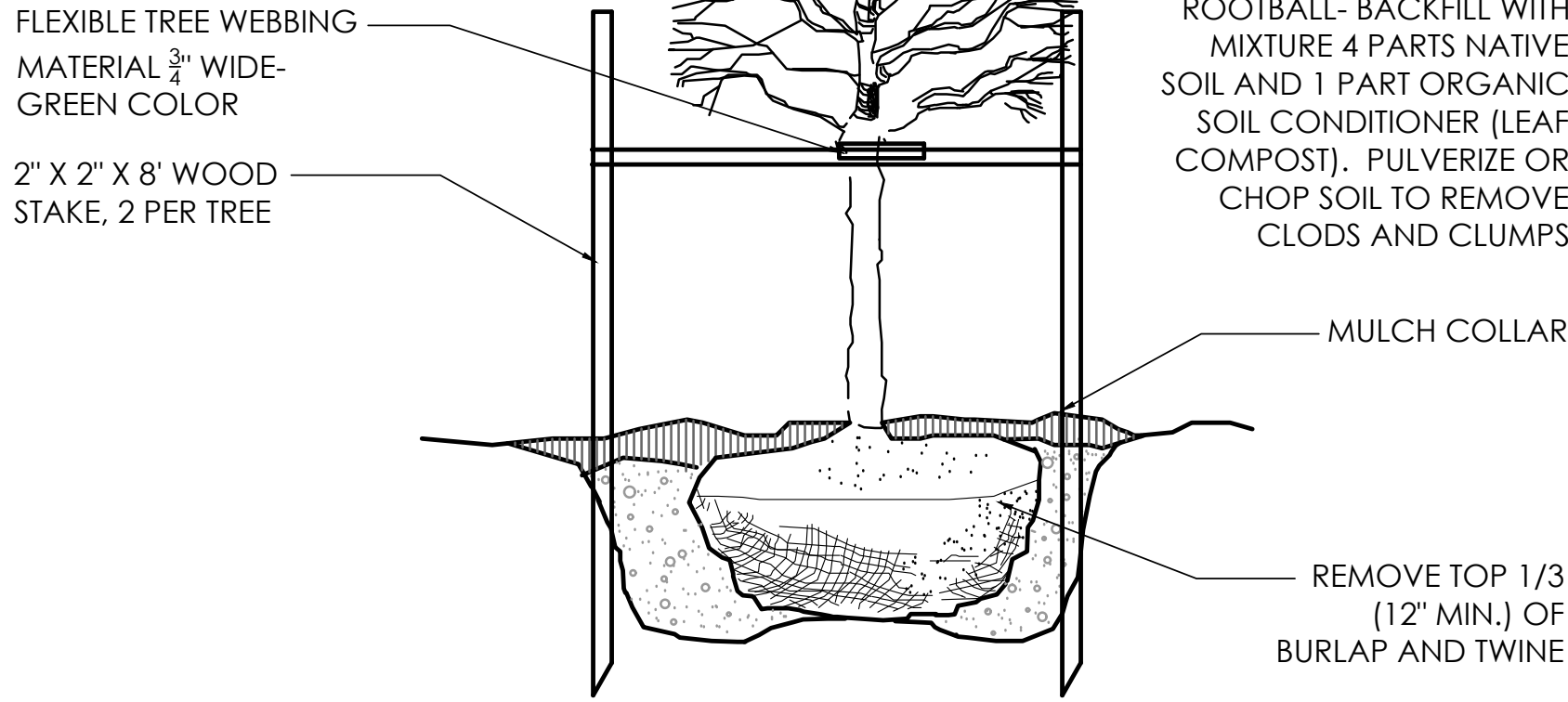
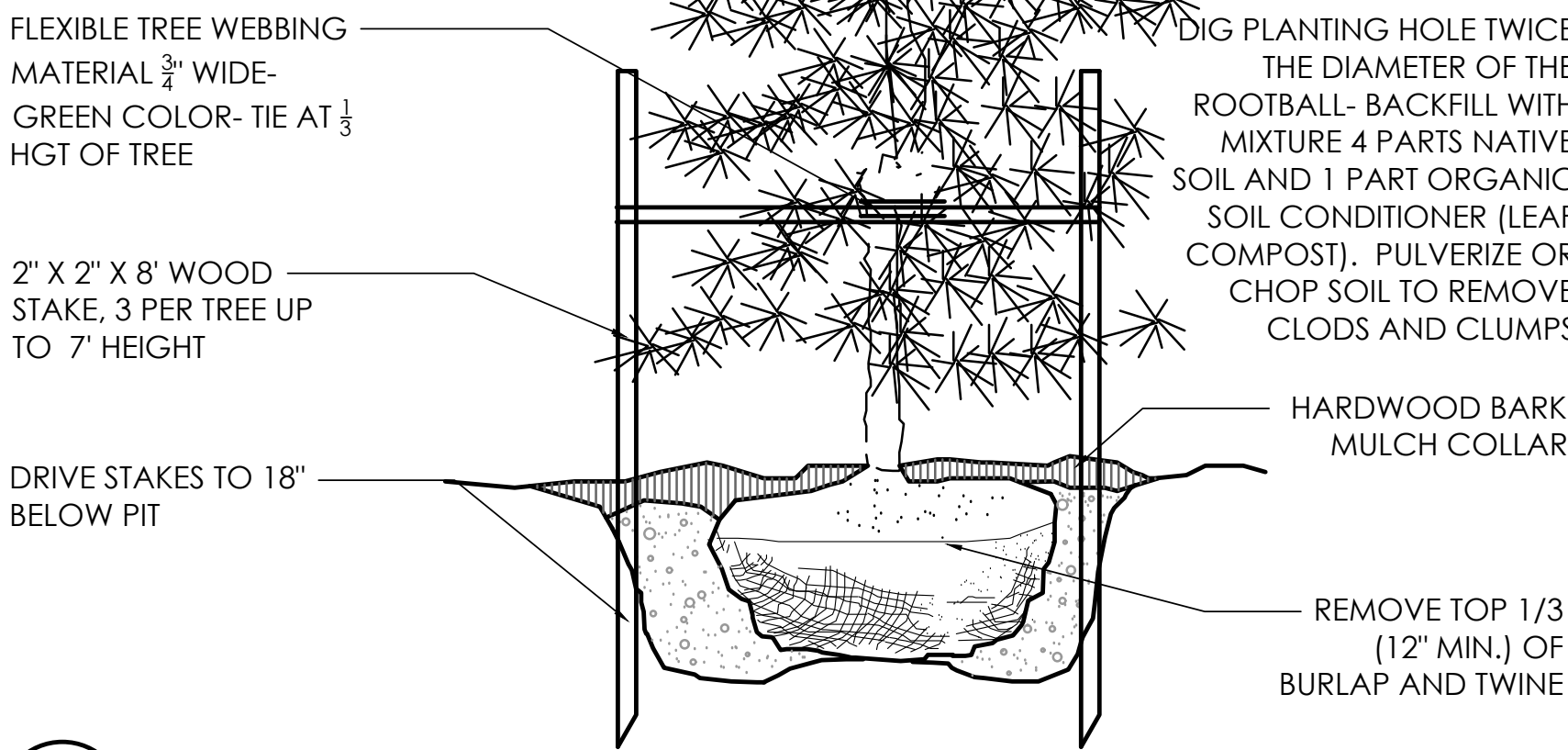


NOTE:
THE AMOUNT OF TREE AND SHRUB PRUNING SHALL BE LIMITED TO THE MINIMUM NECESSARY TO REMOVE DEAD OR INJURED TWIGS & BRANCHES. RETAIN NORMAL SHAPE. PLANT TREES AND EVERGREENS SO THE ROOT FLARE IS 2'- 3" ABOVE FINISH GRADE



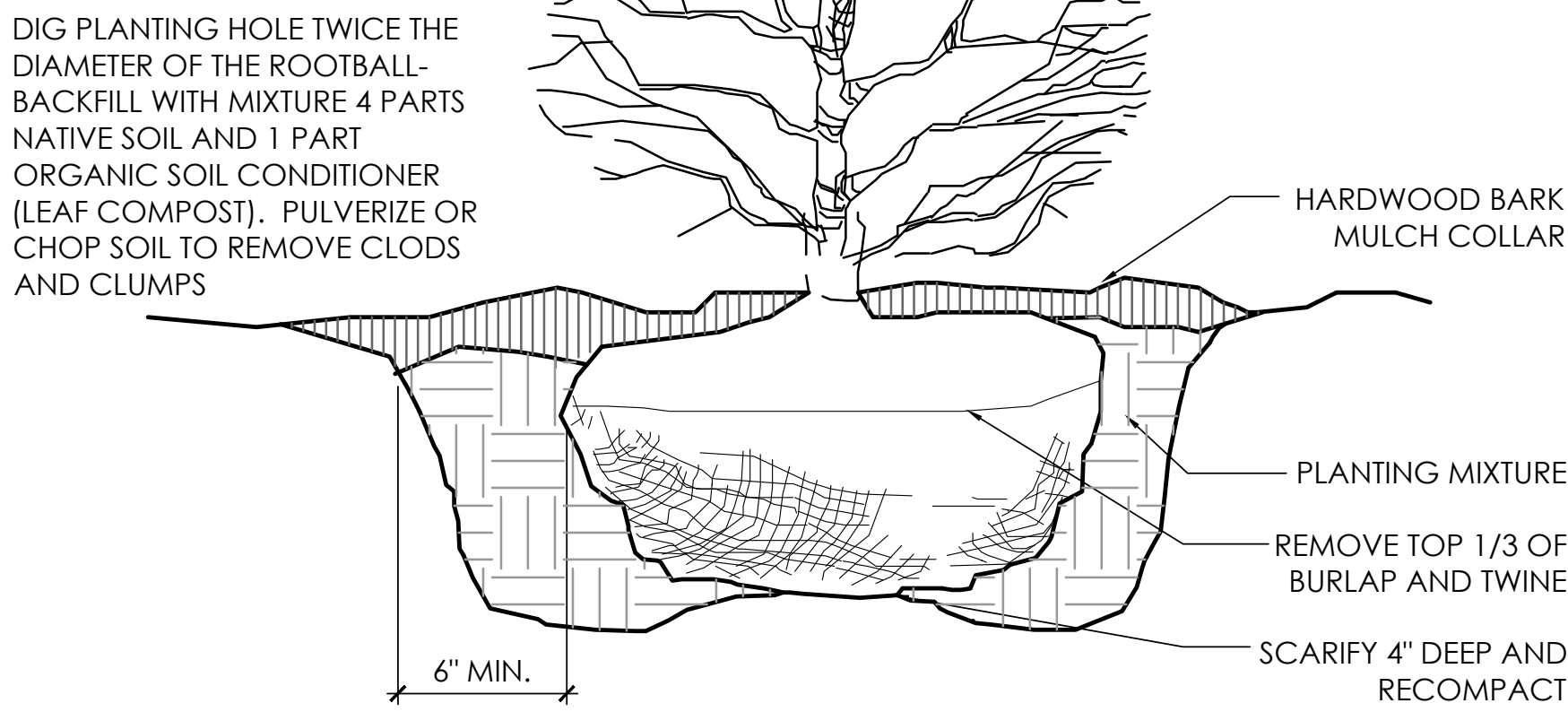
1 DECIDUOUS TREE
N.T.S. 01-1001

NOTE:
THE AMOUNT OF TREE AND SHRUB PRUNING SHALL BE LIMITED TO THE MINIMUM NECESSARY TO REMOVE DEAD OR INJURED TWIGS & BRANCHES. RETAIN NORMAL SHAPE. PLANT TREES AND EVERGREENS SO THE ROOT FLARE IS 2'- 3" ABOVE FINISH GRADE.



2 EVERGREEN TREE UNDER 7' HGT.
N.T.S. 01-1100

NOTE:
THE AMOUNT OF TREE AND SHRUB PRUNING SHALL BE LIMITED TO THE MINIMUM NECESSARY TO REMOVE DEAD OR INJURED TWIGS & BRANCHES. RETAIN NORMAL SHAPE. REMOVE EXCESS SOIL FROM THE TOP OF ROOT MASS. PLANT SHRUBS WITH TOP OF ROOT MASS AT FINISH GRADE.

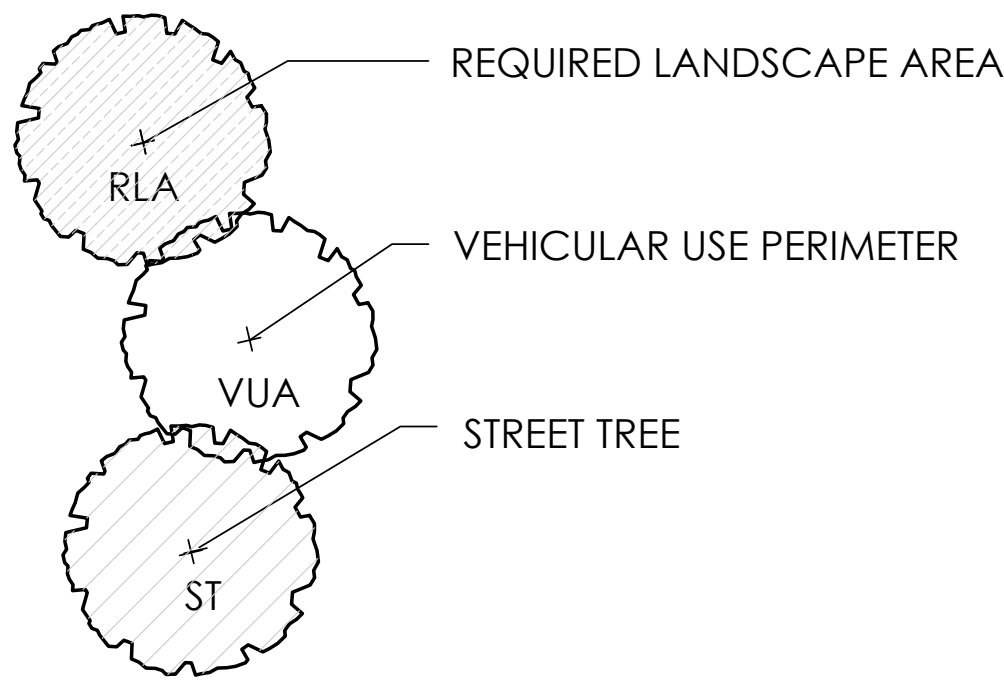


3 SHRUB PLANTING DETAIL
N.T.S. 01-1300



1 TREE REQUIREMENT PLAN
SCALE: 1" = 60'

REQUIRED PLANT KEY



REVISIONS	

LANDSCAPE DETAILS

3800 DUBLIN-
GRANVILLE RD.
PREPARED FOR
LAWYERS DEVELOPMENT CORP.
470 OLDE WORTHINGTON RD., SUITE 100
WESTERVILLE, OH 43082

Paris Planning & Design

LAND PLANNING
243 N. 5th Street
P (614) 487-1944

LANDSCAPE ARCHITECTURE
Suite 401
Columbus, OH 43215
www.parisplanninganddesign.com

DATE	4/3/20
PROJECT	18035
SHEET	

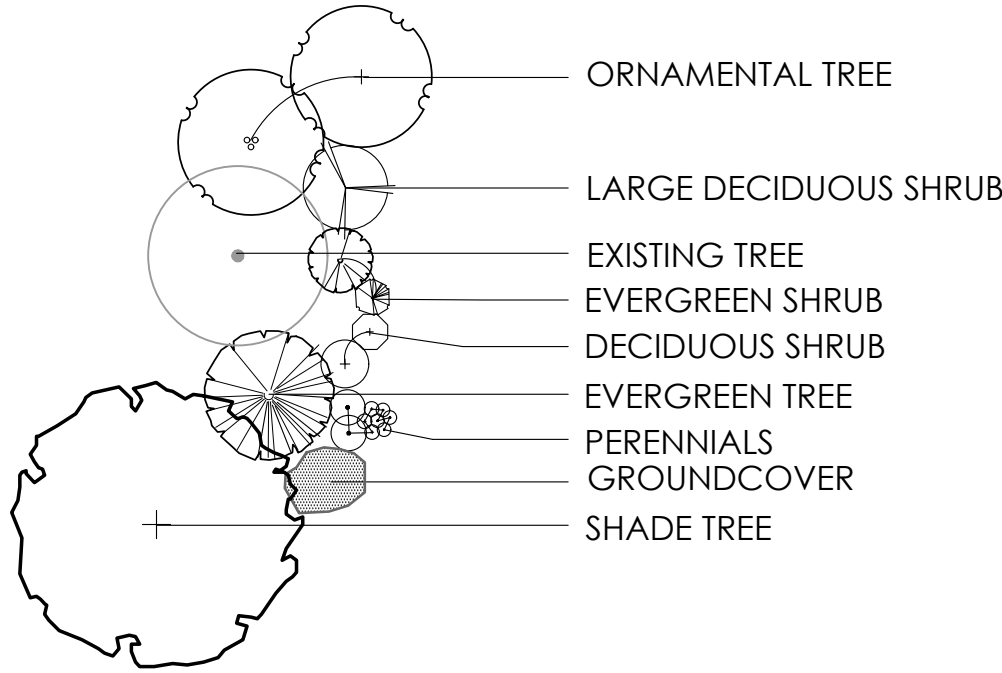
L-3

CONSTRUCTION NOTES:

- 1
- LAWN AREA, PROVIDE POSITIVE DRAINAGE ACROSS ALL SURFACES.
- 2
- LANDSCAPE AREA, PROVIDE POSITIVE DRAINAGE ACROSS ALL SURFACES.
- 3
- ENTRY SIGN - BY OWNER

PLANT KEY TYPICALS

SEE PLANT LIST FOR SPECIFIC PLANT SPECIES

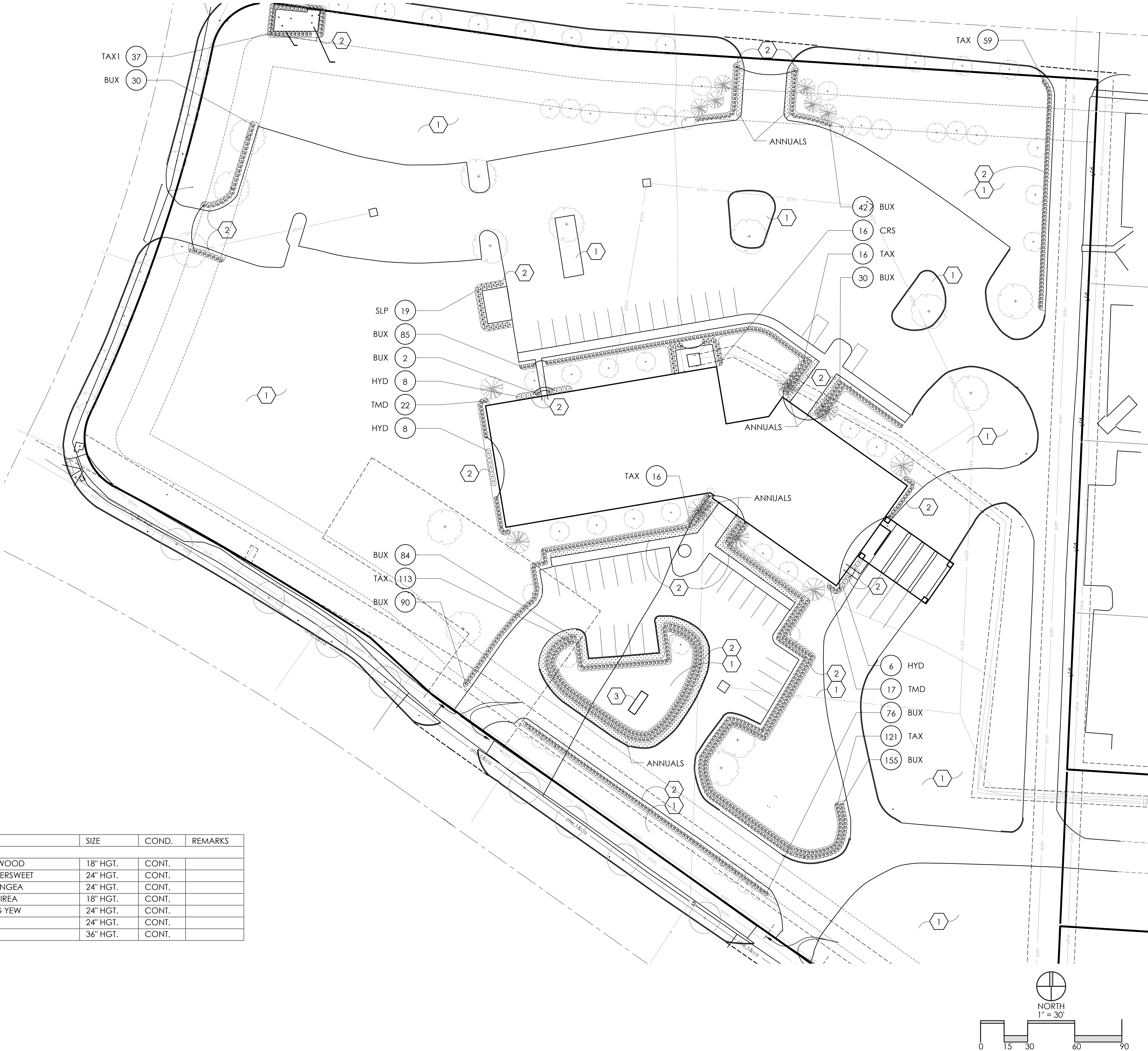


PLANT LIST

(CONTRACTOR RESPONSIBLE FOR ALL PLANTS SHOWN ON PLAN)

QTY	KEY	BOTANICAL NAME	COMMON NAME	SIZE	COND.	REMARKS
SHRUBS						
594	BUX	BUXUS X 'GREEN GEM'	GREEN GEM BOXWOOD	18" HGT.	CONT.	
16	CRS	CLETHRA ALNIFOLIA 'RUBY SPICE'	RUBY SPICE SUMMERSWEET	24" HGT.	CONT.	
22	HYD	HYDRANGEA PANICULATA 'JANE'	LITTLE LIME HYDRANGEA	24" HGT.	CONT.	
19	SLP	SPIRAEA JAPONICA 'LITTLE PRINCESS'	LITTLE PRINCESS SPIREA	18" HGT.	CONT.	
39	TMD	TAXUS X MEDIA 'DENSIFORMIS'	DENSE SPREADING YEW	24" HGT.	CONT.	
325	TAX	TAXUS X MEDIA 'HICKSII'	HICK'S YEW	24" HGT.	CONT.	
37	TAX1	TAXUS X MEDIA 'HICKSII'	HICK'S YEW	36" HGT.	CONT.	

*NOTE: ANNUALS TO BE PLANTED BY OWNER. NOT IN INITIAL LANDSCAPE COSTS.

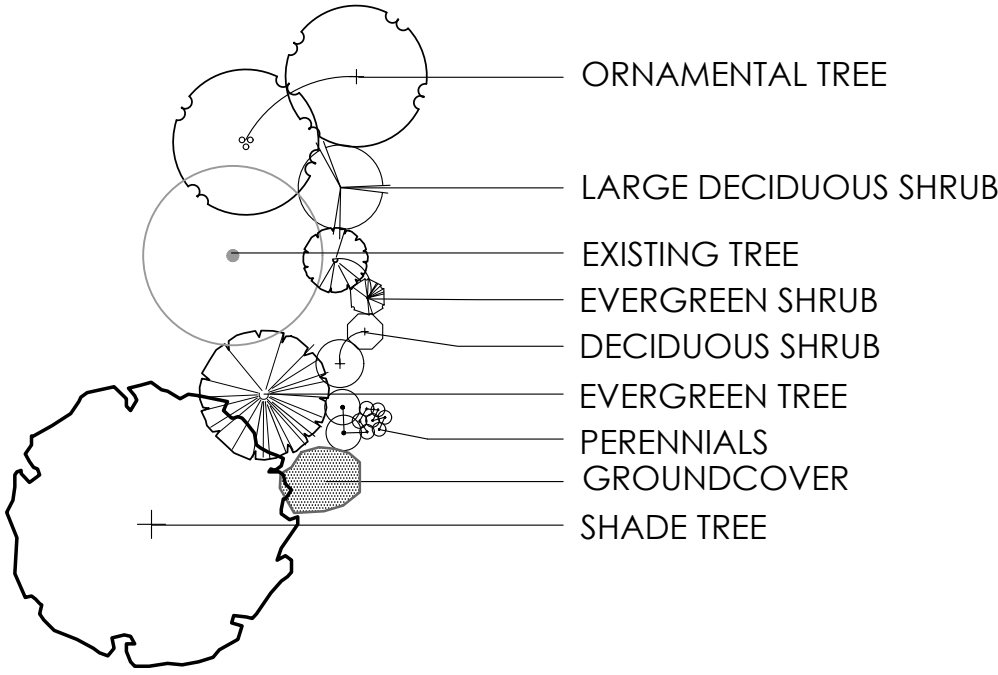


CONSTRUCTION NOTES:

- 1
- LAWN AREA, PROVIDE POSITIVE DRAINAGE ACROSS ALL SURFACES.
- 2
- LANDSCAPE AREA, PROVIDE POSITIVE DRAINAGE ACROSS ALL SURFACES.
- 3
- ENTRY SIGN - BY OWNER

PLANT KEY TYPICALS

SEE PLANT LIST FOR SPECIFIC PLANT SPECIES



LANDSCAPE REQUIREMENTS

STREET TREES

153.065 (D)(3)	REQUIRED	PROVIDED
THERE SHALL BE TREES PLANTED ALONG PUBLIC STREETS OF THE DEVELOPMENT AT 1 SHADE TREE PER 40' LF	TREES PLANTED ALONG PUBLIC STREETS	EXISTING STREET TREES TO REMAIN ALONG DUBLIN-GRANVILLE RD. 7 TREES ON DUBLIN CENTER DR. 13 TREES ON BANKER DR. 2 TREES ON SAWMILL RD.

VEHICULAR USE AREA

153.065 (D)(5)	REQUIRED	PROVIDED
ALL VEHICULAR USE AREAS WITHIN 20'-40' OF A PUBLIC ROW SHALL HAVE 1 SHADE TREE PER 40 LF, AND 5 SHRUBS PER 25 LF	DUBLIN-GRANVILLE ROAD - 275' LF 7 TREES / 55 SHRUBS DUBLIN CENTER DRIVE - 85' LF 3 TREES / 17 SHRUBS BANKER DRIVE - 71' LF 2 TREES / 15 SHRUBS	7 TREES 76 SHRUBS 3 TREES 30 SHRUBS 2 TREES 19 SHRUBS
A MINIMUM OF 5% OF THE INTERIOR PARKING LOT AREA SHALL BE LANDSCAPED	97,434.82 SF x 5% = 4,871.74 SF	15,875.61 SF (16.3%) LANDSCAPED AREA
THERE SHALL BE A MINIMUM OF 1 SHADE TREE PER 300 SF OF REQUIRED LANDSCAPED AREA	4,871.74 SF = 17 TREES	17 TREES

FOUNDATION PLANTING

153.065 (D)(7)	REQUIRED	PROVIDED
1 SHRUB PER 10 LF OF BUILDING FACADE FACING A PUBLIC OR PRIVATE STREET OR AN OPEN SPACE	717 LF = 72 SHRUBS	72 SHRUBS

UTILITY SCREENING

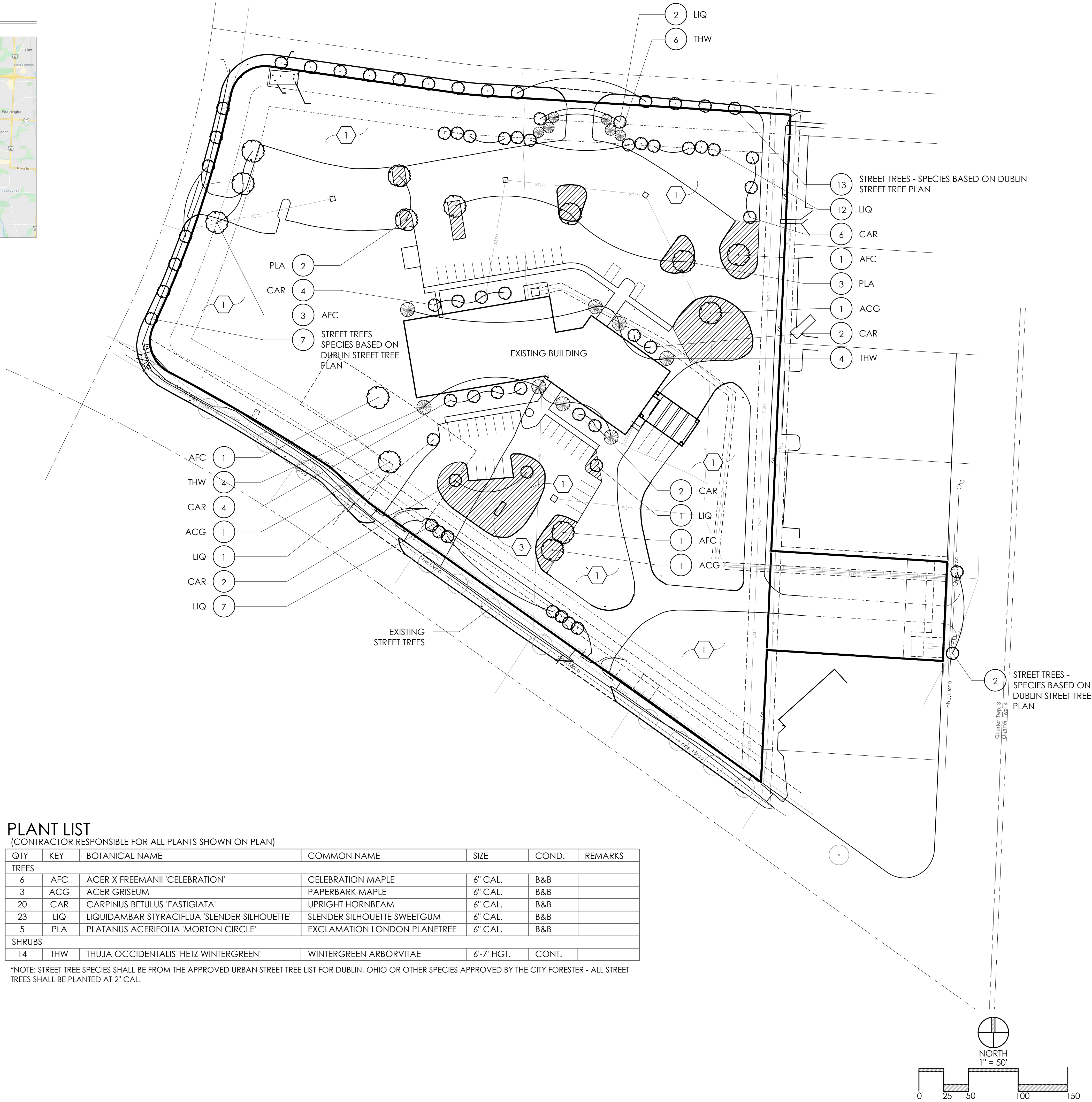
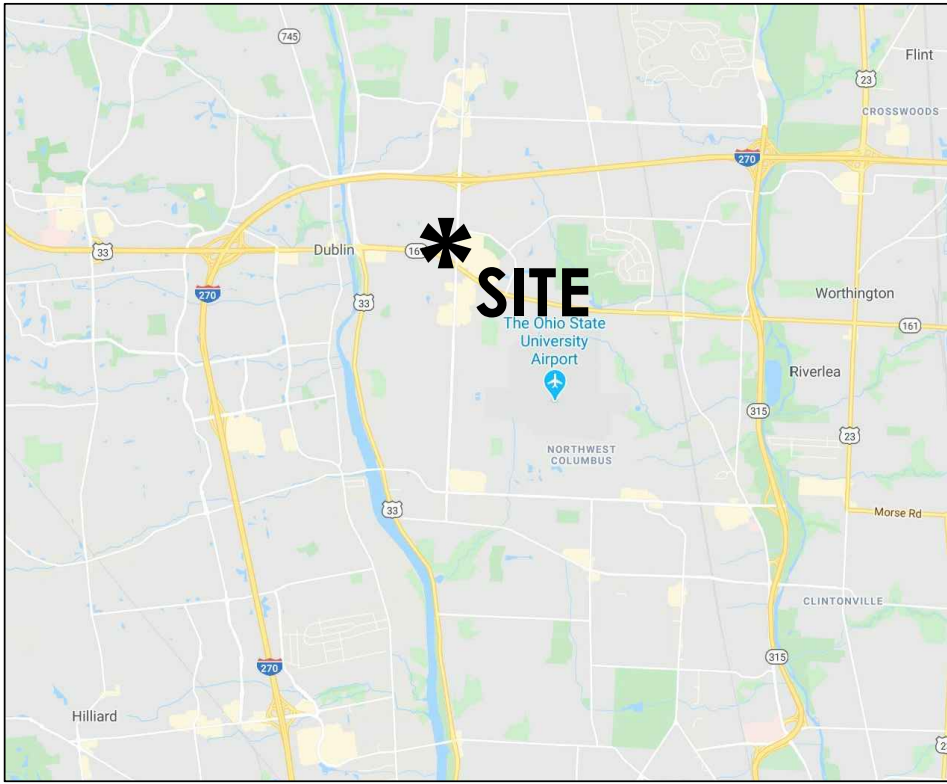
153.065 (E)(3)	REQUIRED	PROVIDED
A WALL, STRUCTURE, OR VEGETATION USED TO SCREEN STORAGE ENCLOSURES - SHOULD BE 1' TALLER THAN THE HEIGHT OF THE ENCLOSURE	WALL, STRUCTURE, OR VEGETATION - 1' TALLER THAN HEIGHT OF THE ENCLOSURE	BRICK WALL AND EVERGREEN SHRUBS

TREE REPLACEMENT

153.146 (A)	REQUIRED	PROVIDED
TOTAL NUMBER OF CALIPER INCHES REMOVED SHALL BE REPLACED INCH FOR INCH WITH TREES AT LEAST 2.5" CAL. OR PAY A FEE IN LIEU OF (1" CAL. = \$150)	BANK PARCEL - 59" CAL. TO BE REPLACED	59" CAL. TO BE REPLACED - SEE SHEET L-5 FOR MORE INFORMATION
	SAWMILL PARCEL - 202" CAL. TO BE REPLACED	202" CAL. TO BE REPLACED - SEE SHEET L-5 FOR MORE INFORMATION

*NOTE - IF TREES FOR ANY CODE REQUIREMENT ARE INSTALLED AT GREATER THAN MINIMUM SIZE (2" CAL.) THEN ADDITIONAL CALIPER INCHES CAN BE COUNTED TOWARDS TREE REPLACEMENT INCHES

VICINITY MAP



PLANT LIST

(CONTRACTOR RESPONSIBLE FOR ALL PLANTS SHOWN ON PLAN)

QTY	KEY	BOTANICAL NAME	COMMON NAME	SIZE	COND.	REMARKS
TREES						
6	AFC	ACER X FREEMANII 'CELEBRATION'	CELEBRATION MAPLE	6" CAL.	B&B	
3	ACG	ACER GRISEUM	PAPERBARK MAPLE	6" CAL.	B&B	
20	CAR	CARPINUS BETULUS 'FASTIGIATA'	UPRIGHT HORNBEAM	6" CAL.	B&B	
23	LIQ	LIQUIDAMBAR STYRACIFLUA 'SLENDER SILHOUETTE'	SLENDER SILHOUETTE SWEETGUM	6" CAL.	B&B	
5	PLA	PLATANUS ACERIFOLIA 'MORTON CIRCLE'	EXCLAMATION LONDON PLANETREE	6" CAL.	B&B	
SHRUBS						
14	THW	THUJA OCCIDENTALIS 'HETZ WINTERGREEN'	WINTERGREEN ARBORVITAE	6'-7' HGT.	CONT.	

*NOTE: STREET TREE SPECIES SHALL BE FROM THE APPROVED URBAN STREET TREE LIST FOR DUBLIN, OHIO OR OTHER SPECIES APPROVED BY THE CITY FORESTER - ALL STREET TREES SHALL BE PLANTED AT 2" CAL.

REVISIONS

OVERALL LANDSCAPE PLAN

3800 DUBLIN-GRANVILLE RD.
PREPARED FOR
LAWYERS DEVELOPMENT CORP.
470 OLDE WORTHINGTON RD., SUITE 100
WESTERVILLE, OH 43082

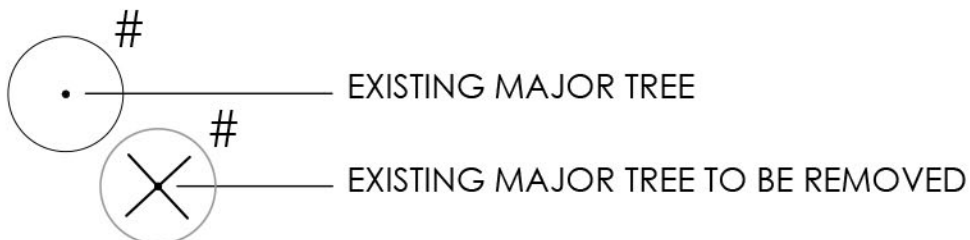
Paris Planning & Design
LAND PLANNING
243 N. 5th Street
P.O. Box 14
Columbus, OH 43215
Suite 401
www.parisplanninganddesign.com

LANDSCAPE ARCHITECTURE
Columbus, OH 43215
www.parisplanninganddesign.com

DATE	4/3/20
PROJECT	18035
SHEET	

L-1

PRESERVATION PLANT KEY



GENERAL NOTES

1. DIAMETER SHOWN ON PLAN SHEET L-4
REPRESENT THE CRITICAL ROOT ZONE (1" RADIUS
PER 1" CALIPER OR 15' WHICHEVER IS GREATER).

TREES REMOVED

1. 261 CALIPER INCHES OF TREE WHICH ARE
REMOVED TO BE REPLACED DUE TO TREE NOT
BEING POOR, DEAD, UNDESIRABLE SPECIES, OR
NOT ON PREVIOUS DEVELOPMENT PLAN.

TREE REPLACEMENT TOTAL*

*ALL TREES WILL BE REMOVED BY DEVELOPMENT.

TOTAL EXISTING MAJOR TREES (CAL. INCHES)	261
TOTAL EXISTING MAJOR TREES (CALIPER INCHES) TO BE REMOVED BY DEVELOPMENT	261
TOTAL REPLACEMENT TREES REQUIRED (CAL. INCHES)	261
TOTAL REPLACEMENT TREES PROVIDED (CAL. INCHES)	266
TOTAL REMAINING CAL. INCHES	0

DUBLIN 18, LLC TREE SURVEY

TREE #	SIZE	SPECIES	CONDITION	REQ'D REPLACEMENTS & EXEMPTIONS	REQ'D INCHES TO REPLACE	STATUS
1	24	MAPLE	GOOD	ON PREVIOUS DEVELOPMENT PLAN	0	REMOVE
2	17	MAPLE	GOOD	ON PREVIOUS DEVELOPMENT PLAN	0	REMOVE
3	15	LINDEN	GOOD	ON PREVIOUS DEVELOPMENT PLAN	0	REMOVE
4	23	LINDEN	GOOD	ON PREVIOUS DEVELOPMENT PLAN	0	REMOVE
5	17	MAPLE	GOOD	ON PREVIOUS DEVELOPMENT PLAN	0	REMOVE
6	13	PINE	GOOD	NOT ON PREVIOUS DEV. PLAN	13	REMOVE
7	10	PINE	GOOD	NOT ON PREVIOUS DEV. PLAN	10	REMOVE
8	25	MAPLE	GOOD	ON PREVIOUS DEVELOPMENT PLAN	0	REMOVE
9	13	CRABAPPLE	GOOD	ON PREVIOUS DEVELOPMENT PLAN	0	REMOVE
10	18	PINE	GOOD	ON PREVIOUS DEVELOPMENT PLAN	0	REMOVE
11	16	SPRUCE	GOOD	ON PREVIOUS DEVELOPMENT PLAN	0	REMOVE
12	10	SPRUCE	GOOD	ON PREVIOUS DEVELOPMENT PLAN	0	REMOVE
13	15	SPRUCE	GOOD	ON PREVIOUS DEVELOPMENT PLAN	0	REMOVE
14	14	SPRUCE	GOOD	ON PREVIOUS DEVELOPMENT PLAN	0	REMOVE
15	10	SPRUCE	GOOD	ON PREVIOUS DEVELOPMENT PLAN	0	REMOVE
16	14	SPRUCE	GOOD	ON PREVIOUS DEVELOPMENT PLAN	0	REMOVE
17	11	SPRUCE	GOOD	ON PREVIOUS DEVELOPMENT PLAN	0	REMOVE
18	14	SPRUCE	GOOD	ON PREVIOUS DEVELOPMENT PLAN	0	REMOVE
19	8	SPRUCE	GOOD	ON PREVIOUS DEVELOPMENT PLAN	0	REMOVE
20	10	SPRUCE	GOOD	ON PREVIOUS DEVELOPMENT PLAN	0	REMOVE
21	10	SPRUCE	GOOD	ON PREVIOUS DEVELOPMENT PLAN	0	REMOVE
22	10	SPRUCE	GOOD	ON PREVIOUS DEVELOPMENT PLAN	0	REMOVE
23	10	SPRUCE	GOOD	ON PREVIOUS DEVELOPMENT PLAN	0	REMOVE
24	10	SPRUCE	GOOD	ON PREVIOUS DEVELOPMENT PLAN	0	REMOVE
25	11	LOCUST	GOOD	ON PREVIOUS DEVELOPMENT PLAN	0	REMOVE
26	14	ELM	GOOD	ON PREVIOUS DEVELOPMENT PLAN	0	REMOVE
27	17	ELM	GOOD	ON PREVIOUS DEVELOPMENT PLAN	0	REMOVE
28	6	ZELKOVA	GOOD	ON PREVIOUS DEVELOPMENT PLAN	0	REMOVE
29	17	ELM	GOOD	ON PREVIOUS DEVELOPMENT PLAN	0	REMOVE
30	19	ELM	GOOD	ON PREVIOUS DEVELOPMENT PLAN	0	REMOVE
31	13	ELM	GOOD	ON PREVIOUS DEVELOPMENT PLAN	0	REMOVE
32	13	ELM	GOOD	ON PREVIOUS DEVELOPMENT PLAN	0	REMOVE
33	12	LOCUST	GOOD	ON PREVIOUS DEVELOPMENT PLAN	0	REMOVE
34	12	LOCUST	GOOD	ON PREVIOUS DEVELOPMENT PLAN	0	REMOVE
35	12	LOCUST	GOOD	ON PREVIOUS DEVELOPMENT PLAN	0	REMOVE
36	23	LOCUST	GOOD	ON PREVIOUS DEVELOPMENT PLAN	0	REMOVE
37	20	MAPLE	GOOD	ON PREVIOUS DEVELOPMENT PLAN	0	REMOVE
38	19	SPRUCE	GOOD	ON PREVIOUS DEVELOPMENT PLAN	0	REMOVE
39	13	LOCUST	GOOD	ON PREVIOUS DEVELOPMENT PLAN	0	REMOVE
40	14	CRABAPPLE	GOOD	ON PREVIOUS DEVELOPMENT PLAN	0	REMOVE
41	13	CRABAPPLE	FAIR	ON PREVIOUS DEVELOPMENT PLAN	0	REMOVE
42	13	PINE	GOOD	ON PREVIOUS DEVELOPMENT PLAN	0	REMOVE
43	15	PINE	GOOD	ON PREVIOUS DEVELOPMENT PLAN	0	REMOVE
44	8	CRABAPPLE	GOOD	ON PREVIOUS DEVELOPMENT PLAN	0	REMOVE
45	9	CRABAPPLE	GOOD	ON PREVIOUS DEVELOPMENT PLAN	0	REMOVE
46	15	CRABAPPLE	GOOD	ON PREVIOUS DEVELOPMENT PLAN	0	REMOVE
47	8	CRABAPPLE	FAIR	ON PREVIOUS DEVELOPMENT PLAN	0	REMOVE
48	21	SPRUCE	GOOD	ON PREVIOUS DEVELOPMENT PLAN	0	REMOVE
49	10	PINE	GOOD	ON PREVIOUS DEVELOPMENT PLAN	0	REMOVE
50	11	PINE	GOOD	NOT ON PREVIOUS DEV. PLAN	11	REMOVE
51	15	PINE	GOOD	NOT ON PREVIOUS DEV. PLAN	15	REMOVE
52	17	PINE	GOOD	NOT ON PREVIOUS DEV. PLAN	17	REMOVE
53	12	CRABAPPLE	FAIR	NOT ON PREVIOUS DEV. PLAN	12	REMOVE
54	17	CRABAPPLE	GOOD	NOT ON PREVIOUS DEV. PLAN	17	REMOVE
55	13	CRABAPPLE	GOOD	NOT ON PREVIOUS DEV. PLAN	13	REMOVE
56	14	CRABAPPLE	GOOD	NOT ON PREVIOUS DEV. PLAN	14	REMOVE
57	13	CRABAPPLE	GOOD	NOT ON PREVIOUS DEV. PLAN	13	REMOVE
58	36	SILVER MAPLE	GOOD	UNDESIRABLE SPECIES	0	REMOVE
59	38	SILVER MAPLE	GOOD	UNDESIRABLE SPECIES	0	REMOVE
60	10	SERVICEBERRY	GOOD	NOT ON PREVIOUS DEV. PLAN	10	REMOVE
61	10	CRABAPPLE	POOR	POOR CONDITION	0	REMOVE
62	13	CRABAPPLE	POOR	POOR CONDITION	0	REMOVE
63	18	CRABAPPLE	POOR	POOR CONDITION	0	REMOVE
64	13	SPRUCE	GOOD	NOT ON PREVIOUS DEV. PLAN	13	REMOVE
65	9	SPRUCE	FAIR	NOT ON PREVIOUS DEV. PLAN	9	REMOVE
66	16	PINE	GOOD	NOT ON PREVIOUS DEV. PLAN	16	REMOVE
67	15	PINE	GOOD	NOT ON PREVIOUS DEV. PLAN	15	REMOVE
68	13	PINE	GOOD	NOT ON PREVIOUS DEV. PLAN	13	REMOVE
69	14	SPRUCE	FAIR	NOT ON PREVIOUS DEV. PLAN	14	REMOVE
70	9	SPRUCE	GOOD	OUT OF BOUNDARY	0	OUT OF BOUNDARY
71	12	SPRUCE	GOOD	OUT OF BOUNDARY	0	OUT OF BOUNDARY
72	14	PINE	GOOD	ON PREVIOUS DEVELOPMENT PLAN	0	REMOVE
73	15	SPRUCE	GOOD	ON PREVIOUS DEVELOPMENT PLAN	0	REMOVE
74	15	SPRUCE	GOOD	ON PREVIOUS DEVELOPMENT PLAN	0	REMOVE
75	11	PINE	GOOD	ON PREVIOUS DEVELOPMENT PLAN	0	REMOVE
76	18	SPRUCE	GOOD	ON PREVIOUS DEVELOPMENT PLAN	0	REMOVE
77	14	SPRUCE	GOOD	ON PREVIOUS DEVELOPMENT PLAN	0	REMOVE
78	16	SPRUCE	GOOD	ON PREVIOUS DEVELOPMENT PLAN	0	REMOVE
79	12	TREE	POOR	ON PREVIOUS DEVELOPMENT PLAN	0	REMOVE
80	19	LOCUST	GOOD	NOT ON PREVIOUS DEV. PLAN	19	REMOVE
81	17	LOCUST	GOOD	NOT ON PREVIOUS DEV. PLAN	17	REMOVE
82	15	MAPLE	GOOD	ON PREVIOUS DEVELOPMENT PLAN	0	REMOVE
83	16	MAPLE	GOOD	ON PREVIOUS DEVELOPMENT PLAN	0	REMOVE
84	12	LOCUST	GOOD	ON PREVIOUS DEVELOPMENT PLAN	0	REMOVE
85	21	ELM	GOOD	ON PREVIOUS DEVELOPMENT PLAN	0	REMOVE
86	14	MAGNOLIA	GOOD	ON PREVIOUS DEVELOPMENT PLAN	0	REMOVE
87	13	LOCUST	GOOD	ON PREVIOUS DEVELOPMENT PLAN	0	REMOVE
88	8	CRABAPPLE	GOOD	ON PREVIOUS DEVELOPMENT PLAN	0	REMOVE
89	9	CRABAPPLE	GOOD	ON PREVIOUS DEVELOPMENT PLAN	0	REMOVE
90	20	LOCUST	GOOD	ON PREVIOUS DEVELOPMENT PLAN	0	REMOVE
91	15	LOCUST	GOOD	ON PREVIOUS DEVELOPMENT PLAN	0	REMOVE
92	11	LOCUST	GOOD	ON PREVIOUS DEVELOPMENT PLAN	0	REMOVE
93	18	LOCUST	GOOD	ON PREVIOUS DEVELOPMENT PLAN	0	REMOVE
94	19	LOCUST	GOOD	ON PREVIOUS DEVELOPMENT PLAN	0	REMOVE
95	15	CRABAPPLE	POOR	ON PREVIOUS DEVELOPMENT PLAN	0	REMOVE
96	11	CRABAPPLE	GOOD	ON PREVIOUS DEVELOPMENT PLAN	0	REMOVE
97	20	ELM	GOOD	ON PREVIOUS DEVELOPMENT PLAN	0	REMOVE

TOTAL REPLACEMENT INCHES REQUIRED

261" CAL.

REVISIONS

TREE PRESERVATION/
REMOVAL PLAN

3800 DUBLIN-
GRANVILLE RD.
PREPARED FOR
LAWYERS DEVELOPMENT CORP.
470 OLDE WORTHINGTON RD., SUITE 100
WESTERVILLE, OH 43082

Paris Planning & Design
LAND PLANNING
243 N. 5th Street
Columbus, OH 43215
p (614) 487-1944
www.parisplanninganddesign.com

DATE	4/3/20
PROJECT	18035
SHEET	

L-4



PLANT KEY

TREE FENCE*

EXISTING TREE

EXISTING TREE TO BE REMOVED

REPLACEMENT TREE

PARTIAL REPLACEMENT TREE
(OTHER LANDSCAPE
REQUIREMENT WITH CALIPER
INCHES BEYOND MINIMUM
REQUIRED)

GENERAL NOTES

1. DIAMETER SHOWN ON PLAN SHEET L-4
REPRESENT THE CRITICAL ROOT ZONE (1' RADIUS
PER 1" CALIPER OR 15' WHICHEVER IS GREATER).

TREES REMOVED

1. 261 CALIPER INCHES OF TREE WHICH ARE
REMOVED TO BE REPLACED DUE TO TREE NOT
BEING POOR, DEAD, UNDESIRABLE SPECIES, OR
NOT ON PREVIOUS DEVELOPMENT PLAN.

TREE REPLACEMENT TOTAL*	
TOTAL EXISTING MAJOR TREES (CAL. INCHES)	261
TOTAL EXISTING MAJOR TREES (CALIPER INCHES) TO BE REMOVED BY DEVELOPMENT	261
TOTAL REPLACEMENT TREES REQUIRED (CAL. INCHES)	261
TOTAL REPLACEMENT TREES PROVIDED (CAL. INCHES)	266
TOTAL REMAINING CAL. INCHES	0

CONTACT THE CITY OF DUBLIN IF THESE TREE SIZES ARE UNAVAILABLE. OUTSTANDING REPLACEMENT INCHES SHALL BE REPLACED WITH A FEE OF \$150 PER INCH PRIOR TO OCCUPANCY

REPLACEMENT TREES (ADDITIONAL CAL OVER REQUIREMENTS)

ID#	COMMON NAME	BOTANICAL NAME	SIZE (OVER REQUIREMENT)	SIZE
A	CELEBRATION MAPLE	ACER x FREEMANII 'CELEBRATION'	4" CAL.	6" CAL.
B	CELEBRATION MAPLE	ACER x FREEMANII 'CELEBRATION'	4" CAL.	6" CAL.
C	CELEBRATION MAPLE	ACER x FREEMANII 'CELEBRATION'	4" CAL.	6" CAL.
D	EXCLAMATION LONDON PLANETREE	PLANTANUS ACERIFOLIA 'MORTON CIRCLE'	4" CAL.	6" CAL.
E	EXCLAMATION LONDON PLANETREE	PLANTANUS ACERIFOLIA 'MORTON CIRCLE'	4" CAL.	6" CAL.
F	EXCLAMATION LONDON PLANETREE	PLANTANUS ACERIFOLIA 'MORTON CIRCLE'	4" CAL.	6" CAL.
G	EXCLAMATION LONDON PLANETREE	PLANTANUS ACERIFOLIA 'MORTON CIRCLE'	4" CAL.	6" CAL.
H	EXCLAMATION LONDON PLANETREE	PLANTANUS ACERIFOLIA 'MORTON CIRCLE'	4" CAL.	6" CAL.
I	SLENDER SILHOUETTE SWEETGUM	LIQUIDAMBAR STYRACIFLUA 'SLENDER SILHOUETTE'	4" CAL.	6" CAL.
J	SLENDER SILHOUETTE SWEETGUM	LIQUIDAMBAR STYRACIFLUA 'SLENDER SILHOUETTE'	4" CAL.	6" CAL.
K	UPRIGHT HORNBEAM	CARPINUS BETULUS 'FASTIGIATA'	4" CAL.	6" CAL.
L	PAPERBARK MAPLE	ACER GRISEUM	4" CAL.	6" CAL.
M	UPRIGHT HORNBEAM	CARPINUS BETULUS 'FASTIGIATA'	4" CAL.	6" CAL.
N	UPRIGHT HORNBEAM	CARPINUS BETULUS 'FASTIGIATA'	4" CAL.	6" CAL.
O	UPRIGHT HORNBEAM	CARPINUS BETULUS 'FASTIGIATA'	4" CAL.	6" CAL.
P	UPRIGHT HORNBEAM	CARPINUS BETULUS 'FASTIGIATA'	4" CAL.	6" CAL.
Q	SLENDER SILHOUETTE SWEETGUM	LIQUIDAMBAR STYRACIFLUA 'SLENDER SILHOUETTE'	4" CAL.	6" CAL.
R	SLENDER SILHOUETTE SWEETGUM	LIQUIDAMBAR STYRACIFLUA 'SLENDER SILHOUETTE'	4" CAL.	6" CAL.
S	UPRIGHT HORNBEAM	CARPINUS BETULUS 'FASTIGIATA'	4" CAL.	6" CAL.
T	UPRIGHT HORNBEAM	CARPINUS BETULUS 'FASTIGIATA'	4" CAL.	6" CAL.
U	CELEBRATION MAPLE	ACER x FREEMANII 'CELEBRATION'	4" CAL.	6" CAL.
V	PAPERBARK MAPLE	ACER GRISEUM	4" CAL.	6" CAL.
W	SLENDER SILHOUETTE SWEETGUM	LIQUIDAMBAR STYRACIFLUA 'SLENDER SILHOUETTE'	4" CAL.	6" CAL.
X	SLENDER SILHOUETTE SWEETGUM	LIQUIDAMBAR STYRACIFLUA 'SLENDER SILHOUETTE'	4" CAL.	6" CAL.
Y	SLENDER SILHOUETTE SWEETGUM	LIQUIDAMBAR STYRACIFLUA 'SLENDER SILHOUETTE'	4" CAL.	6" CAL.
Z	SLENDER SILHOUETTE SWEETGUM	LIQUIDAMBAR STYRACIFLUA 'SLENDER SILHOUETTE'	4" CAL.	6" CAL.
AA	SLENDER SILHOUETTE SWEETGUM	LIQUIDAMBAR STYRACIFLUA 'SLENDER SILHOUETTE'	4" CAL.	6" CAL.
BB	SLENDER SILHOUETTE SWEETGUM	LIQUIDAMBAR STYRACIFLUA 'SLENDER SILHOUETTE'	4" CAL.	6" CAL.
CC	SLENDER SILHOUETTE SWEETGUM	LIQUIDAMBAR STYRACIFLUA 'SLENDER SILHOUETTE'	4" CAL.	6" CAL.
TOTAL				116"

REPLACEMENT TREES

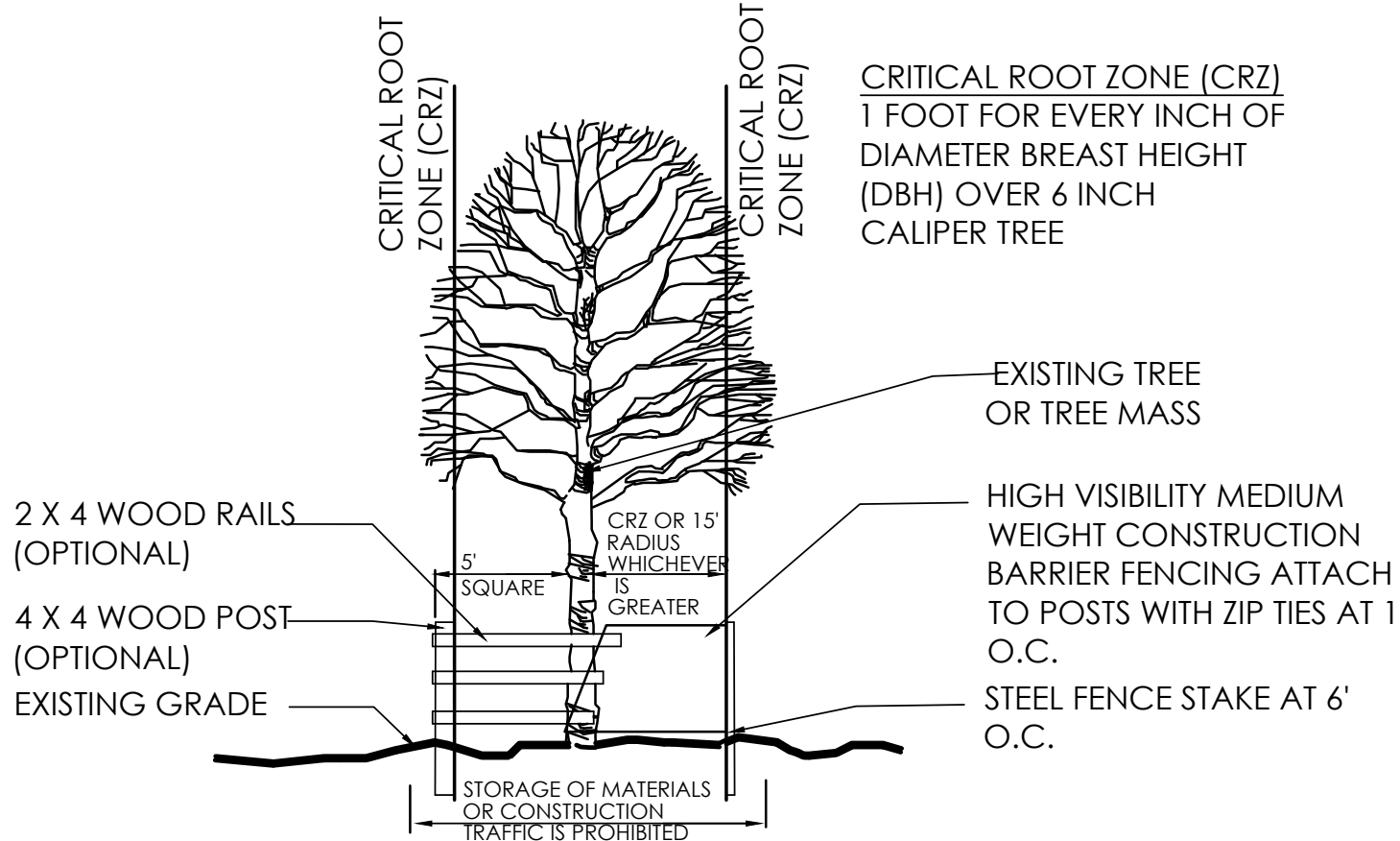
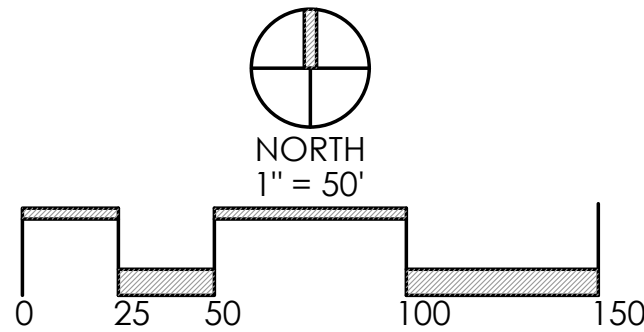
ID#	COMMON NAME	BOTANICAL NAME	SIZE
1	PAPERBARK MAPLE	ACER GRISEUM	6" CAL.
2	CELEBRATION MAPLE	ACER x FREEMANII 'CELEBRATION'	6" CAL.
3	UPRIGHT HORNBEAM	CARPINUS BETULUS 'FASTIGIATA'	6" CAL.
4	UPRIGHT HORNBEAM	CARPINUS BETULUS 'FASTIGIATA'	6" CAL.
5	UPRIGHT HORNBEAM	CARPINUS BETULUS 'FASTIGIATA'	6" CAL.
6	UPRIGHT HORNBEAM	CARPINUS BETULUS 'FASTIGIATA'	6" CAL.
7	UPRIGHT HORNBEAM	CARPINUS BETULUS 'FASTIGIATA'	6" CAL.
8	UPRIGHT HORNBEAM	CARPINUS BETULUS 'FASTIGIATA'	6" CAL.
9	UPRIGHT HORNBEAM	CARPINUS BETULUS 'FASTIGIATA'	6" CAL.
10	UPRIGHT HORNBEAM	CARPINUS BETULUS 'FASTIGIATA'	6" CAL.
11	UPRIGHT HORNBEAM	CARPINUS BETULUS 'FASTIGIATA'	6" CAL.
12	UPRIGHT HORNBEAM	CARPINUS BETULUS 'FASTIGIATA'	6" CAL.
13	UPRIGHT HORNBEAM	CARPINUS BETULUS 'FASTIGIATA'	6" CAL.
14	UPRIGHT HORNBEAM	CARPINUS BETULUS 'FASTIGIATA'	6" CAL.
15	UPRIGHT HORNBEAM	CARPINUS BETULUS 'FASTIGIATA'	6" CAL.
16	UPRIGHT HORNBEAM	CARPINUS BETULUS 'FASTIGIATA'	6" CAL.
17	SLENDER SILHOUETTE SWEETGUM	LIQUIDAMBAR STYRACIFLUA 'SLENDER SILHOUETTE'	6" CAL.
18	SLENDER SILHOUETTE SWEETGUM	LIQUIDAMBAR STYRACIFLUA 'SLENDER SILHOUETTE'	6" CAL.
19	UPRIGHT HORNBEAM	CARPINUS BETULUS 'FASTIGIATA'	6" CAL.
20	UPRIGHT HORNBEAM	CARPINUS BETULUS 'FASTIGIATA'	6" CAL.
21	UPRIGHT HORNBEAM	CARPINUS BETULUS 'FASTIGIATA'	6" CAL.
22	UPRIGHT HORNBEAM	CARPINUS BETULUS 'FASTIGIATA'	6" CAL.
23	UPRIGHT HORNBEAM	CARPINUS BETULUS 'FASTIGIATA'	6" CAL.
24	UPRIGHT HORNBEAM	CARPINUS BETULUS 'FASTIGIATA'	6" CAL.
25	UPRIGHT HORNBEAM	CARPINUS BETULUS 'FASTIGIATA'	6" CAL.
TOTAL			150"

TREE PRESERVATION, REMOVAL, REPLACEMENT NOTES

- COORDINATE ANY STREET TREE REMOVAL FOR ACCESS DRIVE WITH PAULA CHOPE, CITY FORESTER, AT 614-410-4701
- ALL TREES IN THE CONSTRUCTION AREA NOT SPECIFICALLY DESIGNATED FOR REMOVAL SHALL BE PRESERVED. ALL TREE REMOVAL, RELOCATION, AND PRESERVATION WORK SHALL BE SUPERVISED WITH THE INPUT OF A CERTIFIED ARBORIST.
- FENCING SHALL BE INSTALLED AROUND ALL TREES TO BE PRESERVED PRIOR TO COMMENCEMENT OF CONSTRUCTION. THE FENCING MUST REMAIN IN PLACE DURING ALL PHASES OF CONSTRUCTION. ANY CHANGE IN THE PROTECTIVE FENCING MUST BE APPROVED BY THE LANDSCAPE INSPECTOR. OWNER SHALL BE RESPONSIBLE FOR THE CONSTRUCTION, ERECTION, AND MAINTENANCE OF PROTECTION FENCING, REFER TO TREE PRESERVATION DETAIL..
- PRESERVED TREES REMAINING ARE TO BE FERTILIZED AND PRUNED (IF NEEDED) TWO YEARS AFTER CONSTRUCTION.
- OWNER SHALL MONITOR HEALTH AND VIGOR OF EXISTING TREES THROUGHOUT THE COURSE OF CONSTRUCTION OF THIS PROJECT. CONTRACTOR TO NOTIFY A CERTIFIED ARBORIST IF ANY DECLINE IN HEALTHY TREES IS APPARENT. THE ARBORIST SHALL DETERMINE THE REMEDIAL ACTION, IF ANY, TO BE TAKEN.
- ALL EXISTING TREES NOTED AS FAIR TO POOR HEALTH SHALL BE FERTILIZED YEARLY IN THE SPRING USING A HORTICULTURALLY APPROVED METHOD FOR A PERIOD OF THREE YEARS. AFTER THREE YEARS, THE HEALTH SHOULD BE EVALUATED BY A CERTIFIED ARBORIST AND CONTINUING MAINTENANCE RECOMMENDATIONS SHALL BE MADE.
- ANY TREES REMOVED OR DAMAGED IN TREE PRESERVATION AREAS WILL HAVE TO BE REPLACED PER CODE.
- FAILURE TO ABIDE BY THESE TERMS OF THE TREE PRESERVATION, REMOVAL, AND REPLACEMENT PLANS

- NOTES:
- INSPECTION OF INSTALLATION IS REQUIRED CALL (614) 410- 4600
 - THE CITY IS TO BE CONTACTED IF FENCE LOCATION NEEDS TO BE ADJUSTED OR PRIOR TO ANY ENCROACHEMNT OF PRESERVATION AREA

1 TREE PRESERVATION N.T.S.



REVISIONS

TREE REPLACEMENT PLAN

3800 DUBLIN-GRANVILLE RD.
PREPARED FOR
LAWYERS DEVELOPMENT CORP.
470 OLDE WORTHINGTON RD., SUITE 100
WESTERVILLE, OH 43082

Paris Planning & Design
LAND PLANNING
243 N. 5th Street
P (614) 487-1944
LANDSCAPE ARCHITECTURE
Suite 401
Columbus, OH 43215
www.parisplanninganddesign.com

DATE 4/3/20

PROJECT 18035

SHEET

L-5