

**To:** Members of Dublin City Council

**From:** Dana L. McDaniel, City Manager

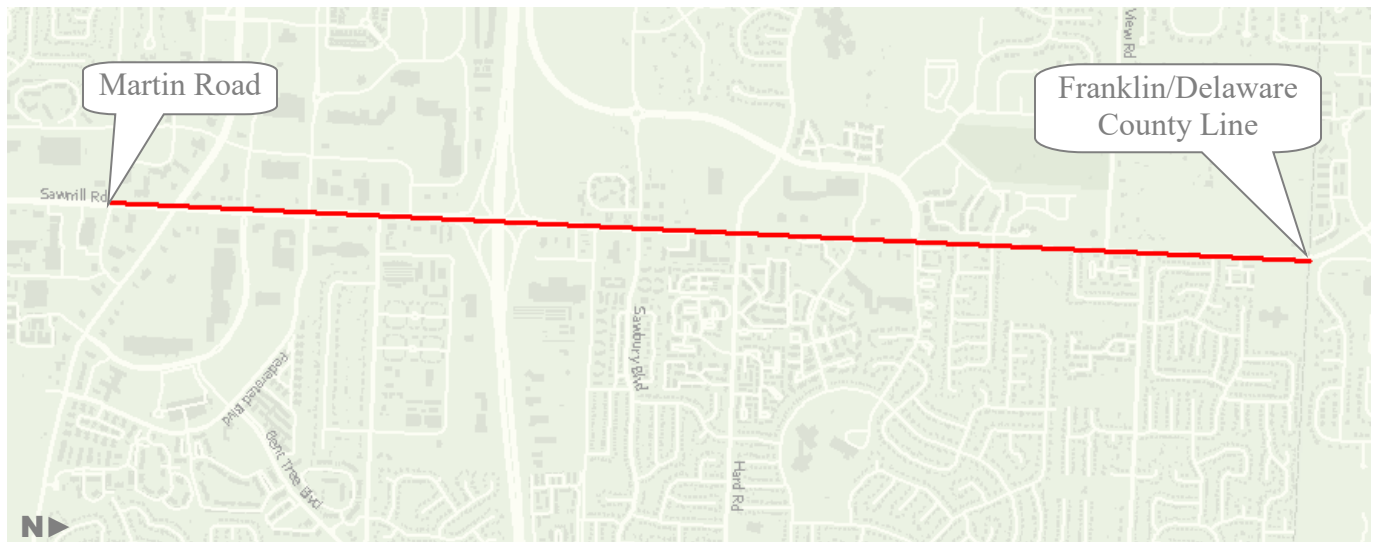
**Date:** July 21, 2020

**Initiated By:** Megan D. O'Callaghan, P.E., Deputy City Manager/Chief Operating Officer  
Paul A. Hammersmith, P.E., Director of Engineering/City Engineer  
Jean-Ellen Willis, P.E., Engineering Manager - Transportation

**Re: Ordinance No. 16-20 – Authorizing An Adjustment to the Boundary Line Between the City Of Dublin and the City Of Columbus on Sawmill Road by Agreement of Both Municipalities, Pursuant to Ohio Revised Code Section 709.37**

## Summary

The Cities of Columbus and Dublin have agreed to adjust the corporation limit along the west side of Sawmill Road to provide consistent jurisdictional oversight and avoid confusion regarding the provision of municipal services. The territory included in the adjustment extends from Martin Road on the southern end to the Delaware County line on the northern end.



*Sawmill Road Boundary Adjustment Limits*

This boundary adjustment simplifies future maintenance contracts and police responses along Sawmill Road and avoids redundant resource allocation by both jurisdictions. The boundary adjustment does not affect any residents in either city. Police staff have reviewed the revised boundary along the corridor and support the new location. For Council's reference, the detailed Annexation Plat & Description is attached to this memo ("Exhibit A").

As a result of the boundary adjustment described above, the serpentine alignment of the existing shared-used path along the west side of Sawmill Road will now intermittently cross into the right-of-way being transferred to Columbus. Since the majority of the path lies within an easement, but

outside of what will be the newly established right-of-way for Sawmill Road, it is the desire of both cities that Dublin continues to provide for the maintenance and upkeep responsibilities of the shared-use path. As such, as provided for within the Ordinance, the proposed shared-use path in its entirety along the west side of Sawmill Road will remain Dublin's to maintain. A detailed set of drawings attached to this memo emphasizes the portions of the shared-use path that crosses into the proposed annexed area for Council's reference.

In order to complete the boundary adjustment process, the City of Dublin must pass an Ordinance agreeing to transfer the territory, and Columbus must pass an Ordinance agreeing to accept the territory. After both municipalities' legislative processes are completed, an application with the Franklin County Commissioners must be filed for approval and the adjustment recorded with the Franklin County Recorder.

Dublin staff has been coordinating with Columbus staff regarding the legislative process. As a result of these conversations, staff anticipates the Columbus legislative process to be complete on or before July 27, 2020, with an Ordinance effective date not later than August 27, 2020. This will coincide with Dublin's legislative schedule in anticipation of adoption at the August 10, 2020 Council meeting, with an Ordinance effective date of September 10, 2020. Once both Ordinances are effective, Dublin will file an application with the Franklin County Commissioners to approve the boundary adjustment.

### **Recommendation**

Staff recommends approval of Ordinance 16-20, at the second reading/public hearing on August 10, 2020, as this ordinance authorizes an adjustment to the boundary line between the City of Dublin and the City of Columbus on Sawmill Road by agreement of both municipalities, pursuant to Ohio Revised Code section 709.37.

# RECORD OF ORDINANCES

Ordinance No. 16-20

Passed \_\_\_\_\_, \_\_\_\_\_

**AN ORDINANCE AUTHORIZING AN ADJUSTMENT TO THE BOUNDARY LINE BETWEEN THE CITY OF DUBLIN AND THE CITY OF COLUMBUS ON SAWMILL ROAD BY AGREEMENT OF BOTH MUNICIPALITIES, PURSUANT TO OHIO REVISED CODE SECTION 709.37**

**WHEREAS**, pursuant to Ohio Revised Code Section 709.37, two adjoining municipal corporations may, by ordinance of their respective legislative authorities, agree to adjust their boundaries, provided that such adjustment does not involve the transfer of land inhabited by more than five voters; and

**WHEREAS**, this boundary adjustment is necessary to allow for territory to be governed by the laws of one municipality, to allow for the effective enforcement of both municipal codes and to avoid confusion regarding the provision of municipal services, including police and street maintenance services; and

**WHEREAS**, Dublin is willing to adjust its boundary line with the City of Columbus on Sawmill Road as graphically depicted in "Exhibit A"; and

**WHEREAS**, the City of Columbus has agreed to this adjustment in concept and the Columbus City Council will consider legislation authorizing the adjustment at a Columbus City Council meeting; and

**WHEREAS**, the proposed boundary adjustment would not affect any voters in either municipality and would be in the best interest of both municipalities;

**NOW THEREFORE, BE IT ORDAINED** by the Council of the City of Dublin, State of Ohio, \_\_\_\_\_ of the elected members concurring that:

**Section 1.** This Council hereby agrees to a boundary adjustment with the City of Columbus and requests that the Franklin County Commissioners adjust the boundaries of Dublin and Columbus in the manner provided by law so that the municipal boundary between the two communities is graphically depicted in "Exhibit A". The City Manager, Law Director and Director of Engineering are hereby authorized to take such further actions as may be required by law to enact the boundary adjustments provided for in this Ordinance and to provide any necessary documentation to the Franklin County Commissioners and the Franklin County Department of Development.

**Section 2.** Both Dublin and Columbus agree that Dublin will retain maintenance of the shared use path on the west side of Sawmill Road.

**Section 3.** The Clerk of Council is hereby authorized and directed to certify a copy of this Ordinance to the Franklin County Commissioners.

**Section 4.** This Ordinance shall be in full force and effect on the earliest date permitted by law.

# RECORD OF ORDINANCES

Ordinance No. 16-20

Passed Page 2 of 2, \_\_\_\_\_

Passed this \_\_\_\_\_ day of \_\_\_\_\_, 2020.

\_\_\_\_\_  
Mayor - Presiding Officer


ATTEST:

\_\_\_\_\_  
Clerk of Council



# PROPOSED BOUNDARY ADJUSTMENT OF 13.224 AC. +/- FROM THE CITY OF DUBLIN TO THE CITY OF COLUMBUS

**LEGEND:**

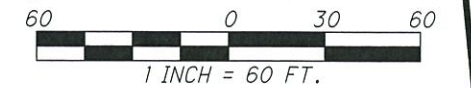
- P.O.B. POINT OF BEGINNING
- EX. CORPORATION LINE
- - - PROP. CORPORATION LINE
- Ex R/W — EX. RIGHT OF WAY
- Ex SH — EX. STANDARD HIGHWAY ESMT.
- Ex U — EX. UTILITY EASEMENT
- EX. GENERAL EASEMENT
- - - COUNTY LINE
-  AREA TO BE ANNEXED

ANNEXATION AREA #1

STATE OF OHIO  
FRANKLIN COUNTY  
CITY OF DUBLIN, CITY OF COLUMBUS,  
PERRY TOWNSHIP

**BASIS OF BEARINGS:**

BEARINGS ARE BASED ON THE BEARING BETWEEN  
FRANKLIN COUNTY ENGINEER'S MONUMENTS  
FCGS7769 AND FCGS7772 BEING N 02°34'55" E.



RECEIVED

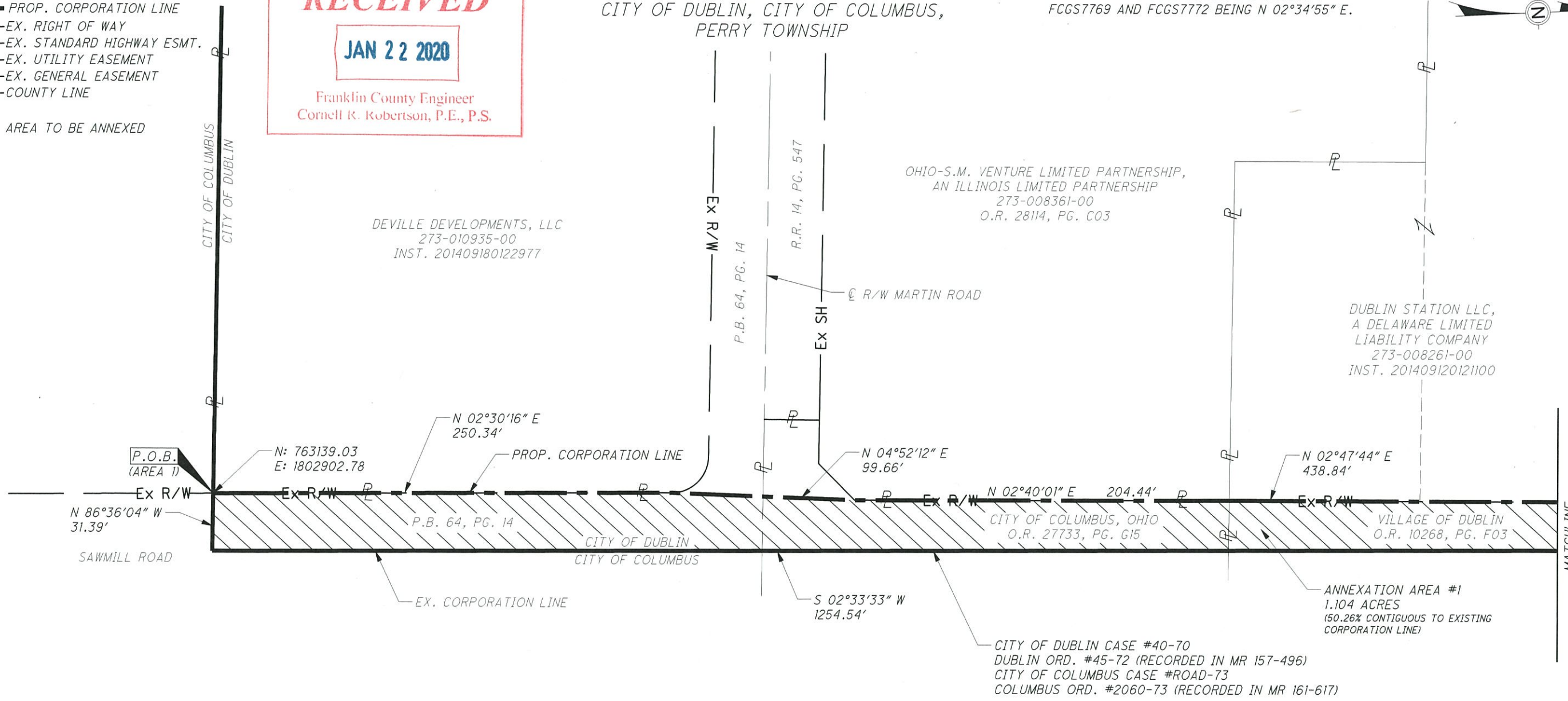
JAN 22 2020

Franklin County Engineer  
Cornell R. Robertson, P.E., P.S.

DEVILLE DEVELOPMENTS, LLC  
273-010935-00  
INST. 201409180122977

OHIO-S.M. VENTURE LIMITED PARTNERSHIP,  
AN ILLINOIS LIMITED PARTNERSHIP  
273-008361-00  
O.R. 28114, PG. C03


DUBLIN STATION LLC,  
A DELAWARE LIMITED  
LIABILITY COMPANY  
273-008261-00  
INST. 201409120121100



MATCHLINE  
SEE SHEET 2



ANNEXATION  
PLAT & DESCRIPTION  
ACCEPTABLE  
CORNELL R. ROBERTSON, P.E., P.S.  
FRANKLIN COUNTY ENGINEER

By  Date 1/22/2020

THIS EXHIBIT WAS CREATED USING AVAILABLE RECORD INFORMATION ONLY AND IS NOT AN ACTUAL FIELD SURVEY.

  
STEVEN L. MULLANEY, PROFESSIONAL LAND SURVEYOR 7900

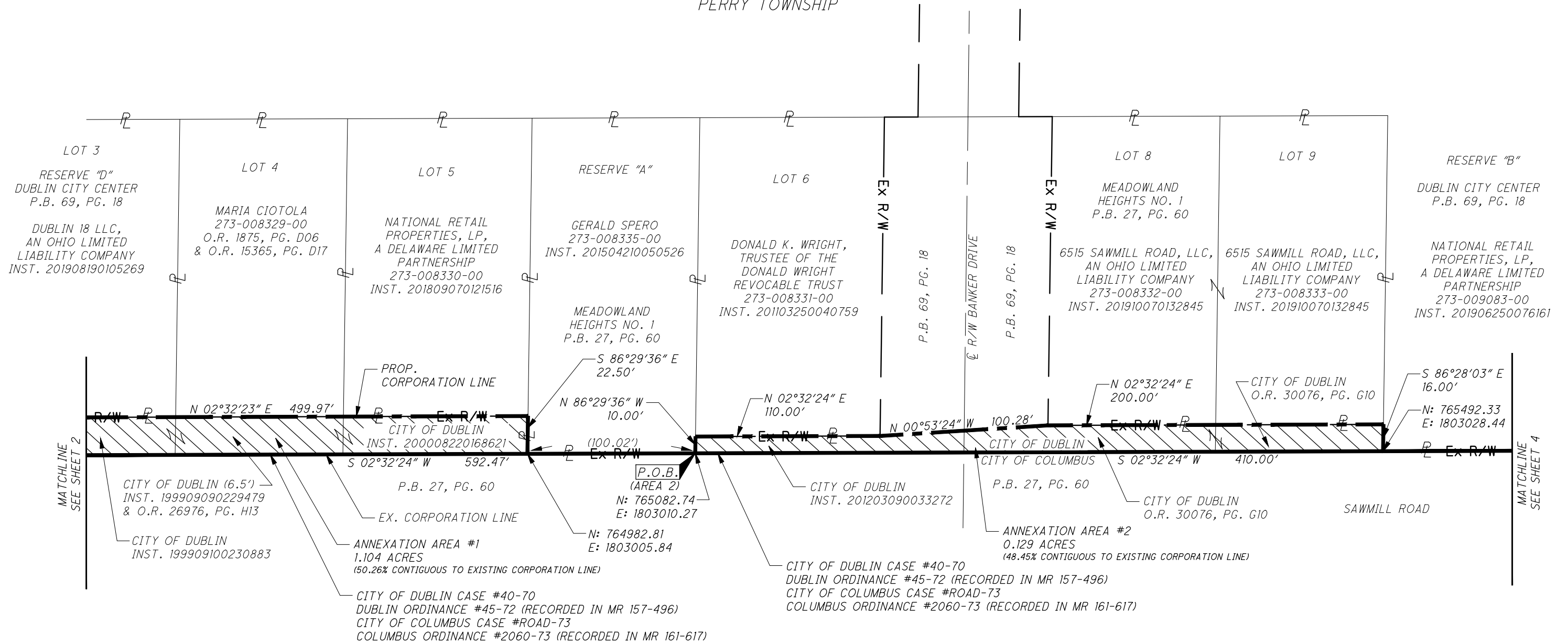
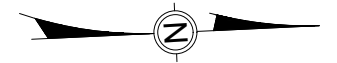
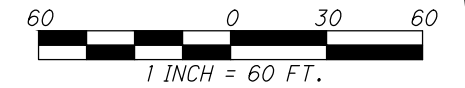
1/22/2020  
DATE



# PROPOSED BOUNDARY ADJUSTMENT OF 13.224 AC. +/- FROM THE CITY OF DUBLIN TO THE CITY OF COLUMBUS

## ANNEXATION AREAS #1 & #2

STATE OF OHIO  
 FRANKLIN COUNTY  
 CITY OF DUBLIN,  
 CITY OF COLUMBUS,  
 PERRY TOWNSHIP

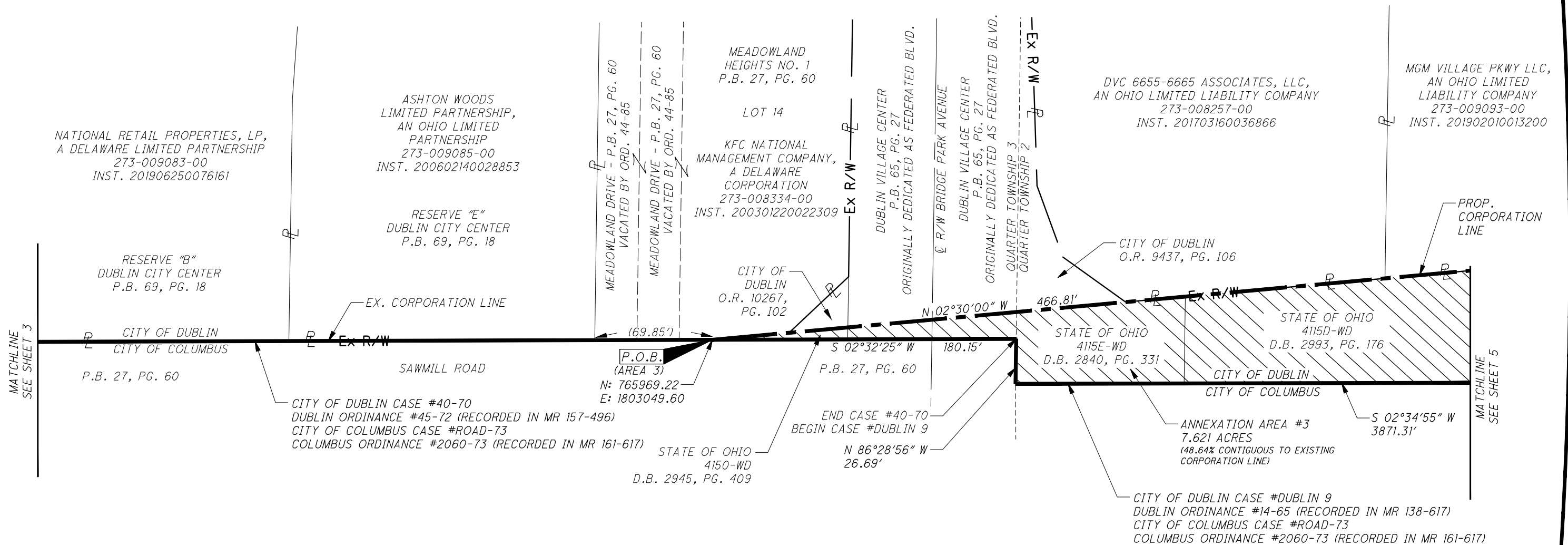
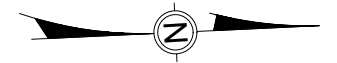
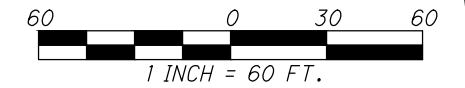






# PROPOSED BOUNDARY ADJUSTMENT OF 13.224 AC. +/- FROM THE CITY OF DUBLIN TO THE CITY OF COLUMBUS

ANNEXATION AREA #3  
STATE OF OHIO  
FRANKLIN COUNTY  
CITY OF DUBLIN,  
CITY OF COLUMBUS,  
PERRY TOWNSHIP

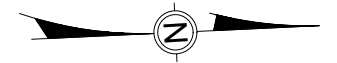
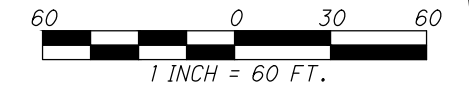






# PROPOSED BOUNDARY ADJUSTMENT OF 13.224 AC. +/- FROM THE CITY OF DUBLIN TO THE CITY OF COLUMBUS

ANNEXATION AREA #3  
STATE OF OHIO  
FRANKLIN COUNTY  
CITY OF DUBLIN,  
CITY OF COLUMBUS,  
PERRY TOWNSHIP



MGM VILLAGE PKWY LLC,  
AN OHIO LIMITED LIABILITY COMPANY  
273-009093-00  
INST. 201902010013200

CAR GER OH DUB, LLC,  
A DELAWARE LIMITED LIABILITY COMPANY  
273-008258-00  
INST. 201301230011957

N 02°30'00" W  
466.81'

STATE OF OHIO  
4115D-WD  
D.B. 2993, PG. 176

SAWMILL ROAD

ANNEXATION AREA #3  
7.621 ACRES  
(48.64% CONTIGUOUS TO  
EXISTING CORPORATION LINE)

STATE OF OHIO  
4115D-WD  
D.B. 2993, PG. 176

STATE OF OHIO  
4115A-WD  
D.B. 2993, PG. 192

CITY OF DUBLIN  
O.R. 34726, PG. A01  
N 86°20'26" W  
25.00'

N 02°52'33" E  
279.85'

(149.18')

N 03°01'39" E 809.04'

CITY OF DUBLIN  
CITY OF COLUMBUS

S 02°34'55" W 3871.31'

MATCHLINE  
SEE SHEET 4

MATCHLINE  
SEE SHEET 6

CITY OF DUBLIN CASE #DUBLIN 9  
DUBLIN ORDINANCE #14-65 (RECORDED IN MR 138-617)  
CITY OF COLUMBUS CASE #ROAD-73  
COLUMBUS ORDINANCE #2060-73 (RECORDED IN MR 161-617)

PROP. CORPORATION LINE

EX. CORPORATION LINE

R  
R

Ex R/W

Ex R/W

Ex R/W

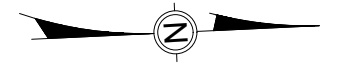
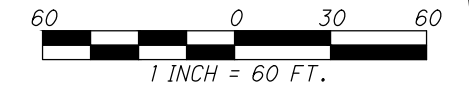
Ex R/W





# PROPOSED BOUNDARY ADJUSTMENT OF 13.224 AC. +/- FROM THE CITY OF DUBLIN TO THE CITY OF COLUMBUS

ANNEXATION AREA #3  
 STATE OF OHIO  
 FRANKLIN COUNTY  
 CITY OF DUBLIN,  
 CITY OF COLUMBUS,  
 PERRY TOWNSHIP



S-ONE, LLC,  
 AN ALASKAN LIMITED  
 LIABILITY COMPANY  
 273-008957-00  
 INST. 201006300082270

I-270

STATE OF OHIO  
 4111-WL  
 D.B. 2853, PG. 260

STATE OF OHIO  
 4111-WL  
 D.B. 2853, PG. 260

N 03°41'03" E 1142.24'

PROP. CORPORATION LINE

STATE OF OHIO  
 4115A-WL  
 D.B. 2993, PG. 192

ANNEXATION AREA #3  
 7.621 ACRES  
 (48.64% CONTIGUOUS TO  
 EXISTING CORPORATION LINE)

SAWMILL ROAD

CITY OF DUBLIN  
 CITY OF COLUMBUS

S 02°34'55" W 3871.31'

EX. CORPORATION LINE

CITY OF DUBLIN CASE #DUBLIN 9  
 DUBLIN ORDINANCE #14-65 (RECORDED IN MR 138-617)  
 CITY OF COLUMBUS CASE #24-89  
 COLUMBUS ORDINANCE #2380-89 (RECORDED IN OR 14329, PG B03)

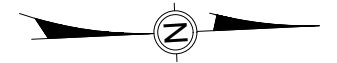
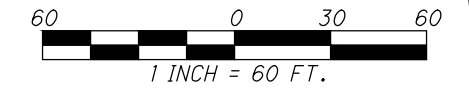
MATCHLINE  
 SEE SHEET 6

MATCHLINE  
 SEE SHEET 8



# PROPOSED BOUNDARY ADJUSTMENT OF 13.224 AC. +/- FROM THE CITY OF DUBLIN TO THE CITY OF COLUMBUS

ANNEXATION AREA #3  
STATE OF OHIO  
FRANKLIN COUNTY  
CITY OF DUBLIN,  
CITY OF COLUMBUS,  
PERRY TOWNSHIP

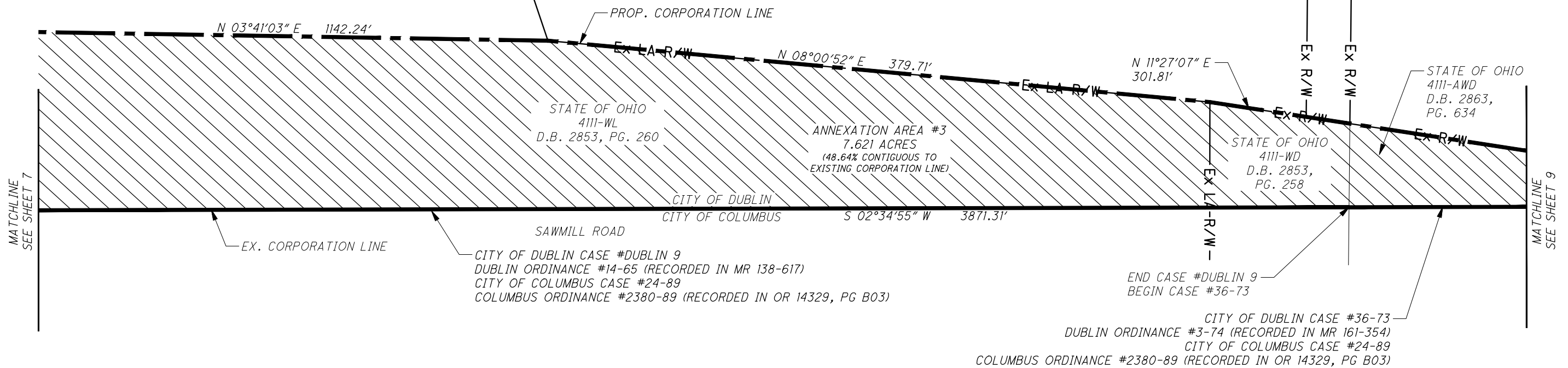


MCKITRICK PROPERTIES, INC.  
273-008610-00  
O.R. 11349, PG. F-01

BOARD OF TRUSTEES  
OF PERRY TOWNSHIP,  
FRANKLIN COUNTY, OHIO  
D.B. 3549, PG. 352

PERRY TOWNSHIP,  
FRANKLIN COUNTY, OHIO,  
BOARD OF TRUSTEES  
273-008792-00  
D.B. 2433, PG. 600

STATE OF OHIO  
4111-WL  
D.B. 2853, PG. 260

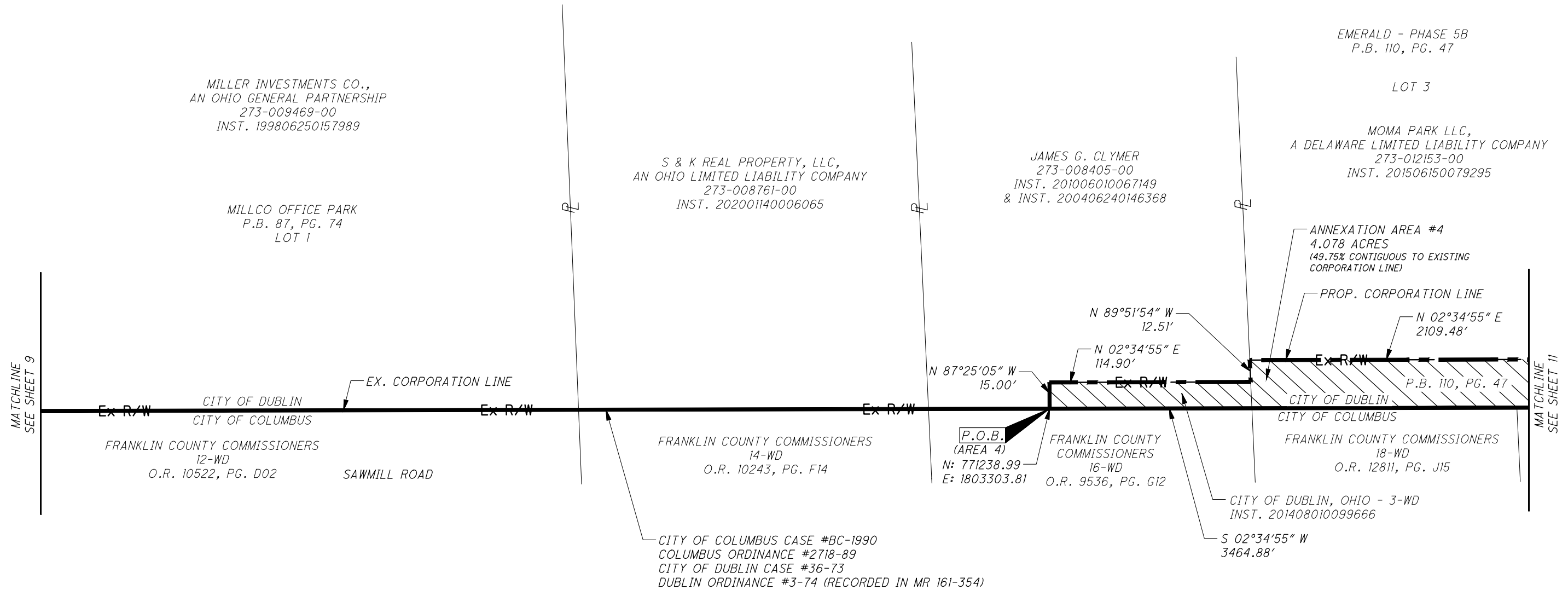
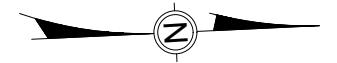
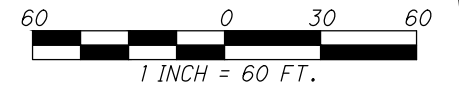






# PROPOSED BOUNDARY ADJUSTMENT OF 13.224 AC. +/- FROM THE CITY OF DUBLIN TO THE CITY OF COLUMBUS

ANNEXATION AREA #4  
 STATE OF OHIO  
 FRANKLIN COUNTY  
 CITY OF DUBLIN,  
 CITY OF COLUMBUS,  
 PERRY TOWNSHIP



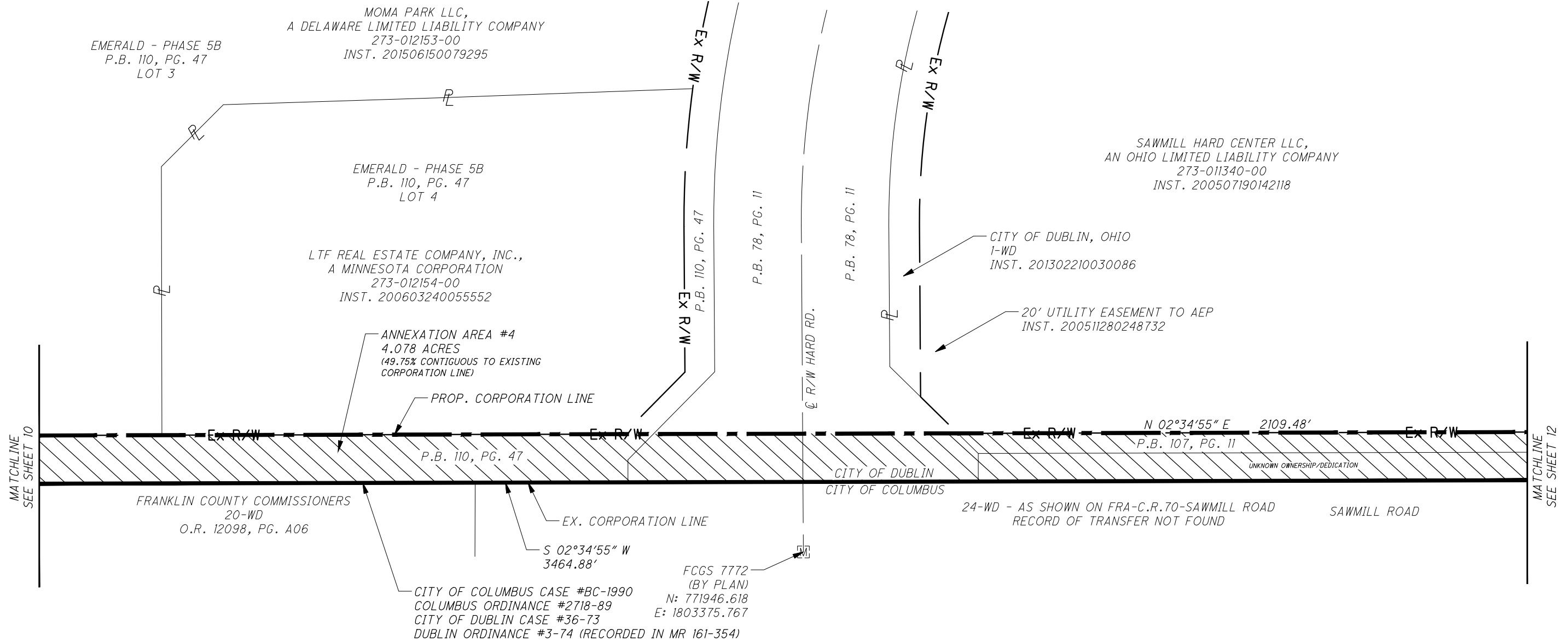
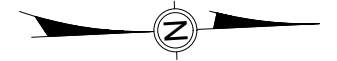
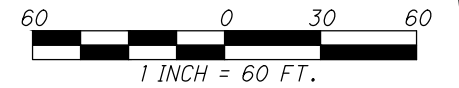
MATCHLINE  
SEE SHEET 9

MATCHLINE  
SEE SHEET 11



# PROPOSED BOUNDARY ADJUSTMENT OF 13.224 AC. +/- FROM THE CITY OF DUBLIN TO THE CITY OF COLUMBUS

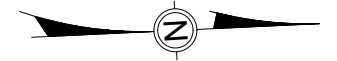
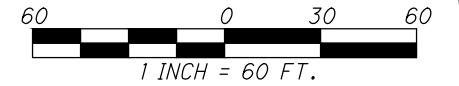
ANNEXATION AREA #4  
STATE OF OHIO  
FRANKLIN COUNTY  
CITY OF DUBLIN,  
CITY OF COLUMBUS,  
PERRY TOWNSHIP





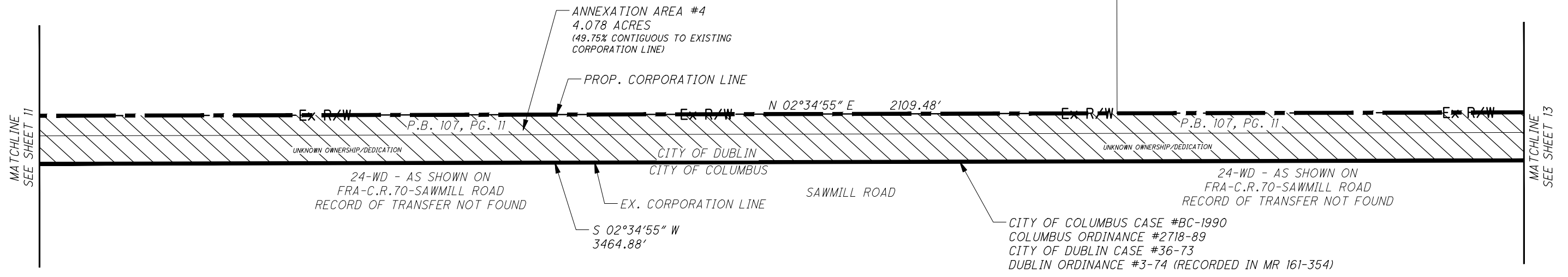
# PROPOSED BOUNDARY ADJUSTMENT OF 13.224 AC. +/- FROM THE CITY OF DUBLIN TO THE CITY OF COLUMBUS

ANNEXATION AREA #4  
 STATE OF OHIO  
 FRANKLIN COUNTY  
 CITY OF DUBLIN,  
 CITY OF COLUMBUS,  
 PERRY TOWNSHIP



SAWMILL HARD CENTER LLC,  
 AN OHIO LIMITED LIABILITY COMPANY  
 273-011340-00  
 INST. 200507190142118

SAWMILL HARD CENTER LLC,  
 AN OHIO LIMITED LIABILITY COMPANY  
 273-011339-00  
 INST. 200503220052696



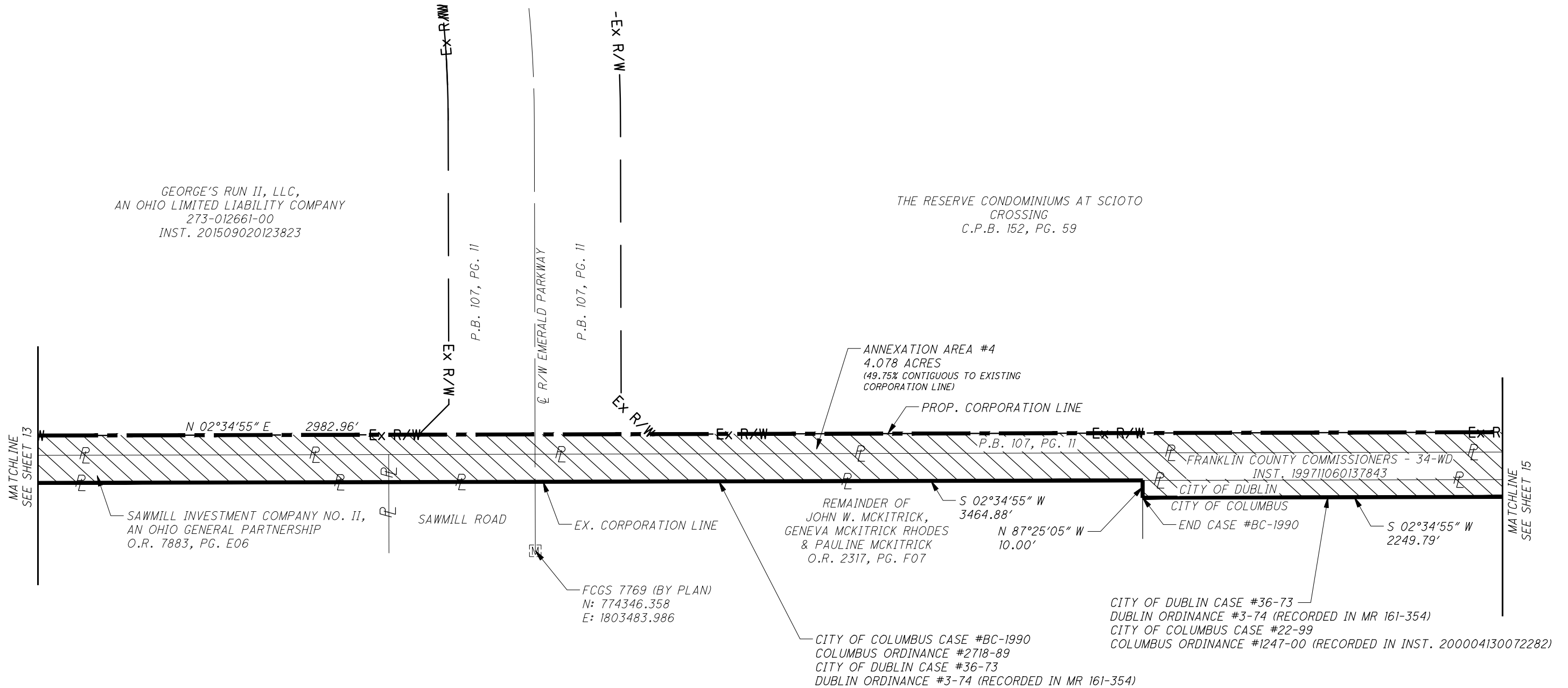
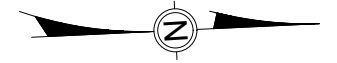
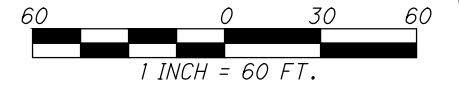






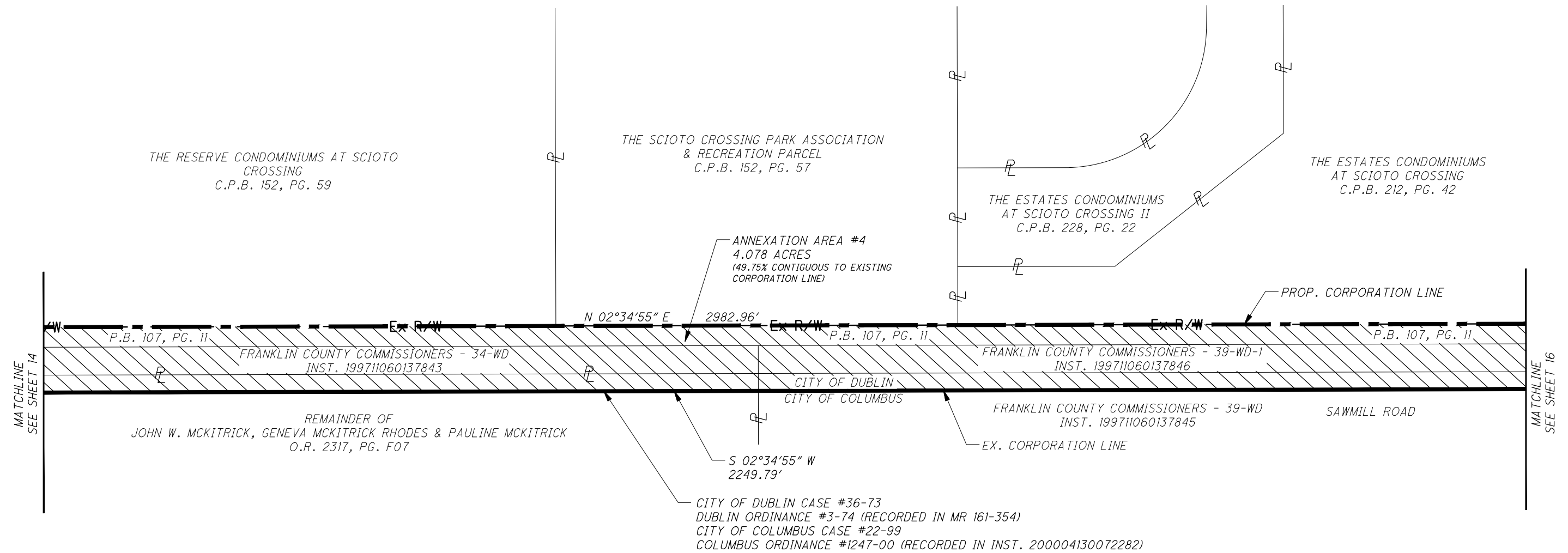
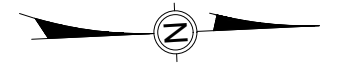
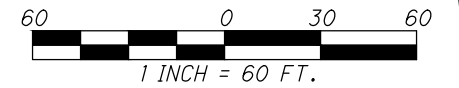
# PROPOSED BOUNDARY ADJUSTMENT OF 13.224 AC. +/- FROM THE CITY OF DUBLIN TO THE CITY OF COLUMBUS

ANNEXATION AREA #4  
STATE OF OHIO  
FRANKLIN COUNTY  
CITY OF DUBLIN,  
CITY OF COLUMBUS,  
PERRY TOWNSHIP



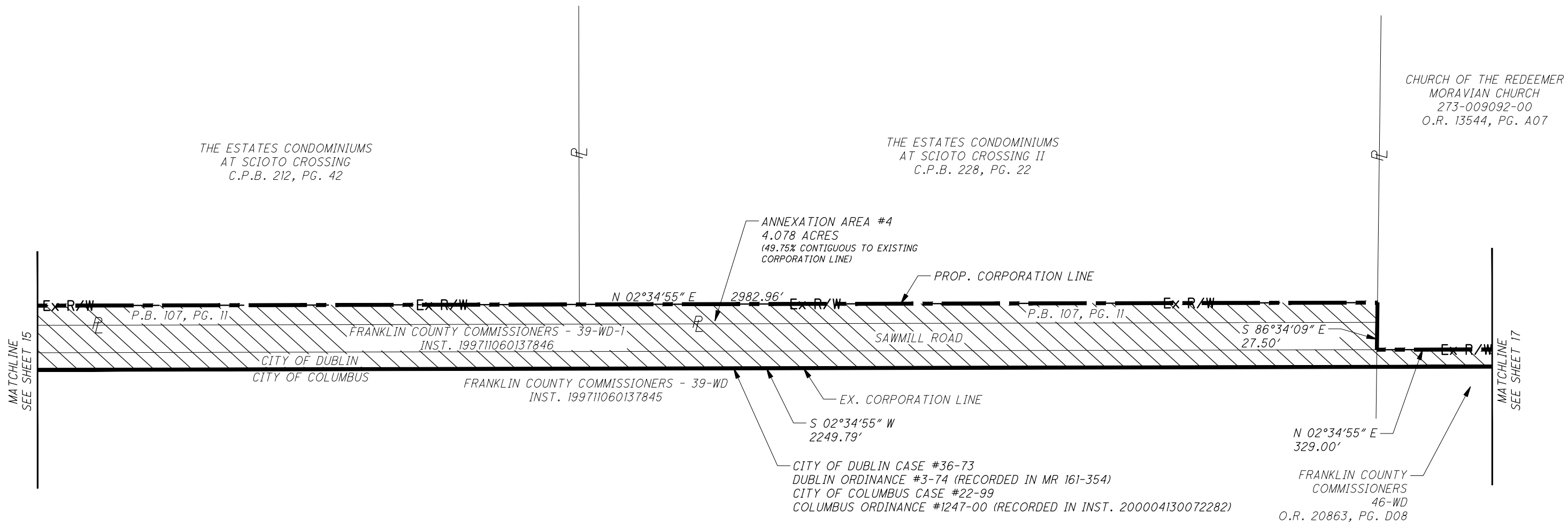
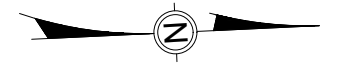
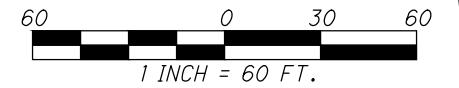
# PROPOSED BOUNDARY ADJUSTMENT OF 13.224 AC. +/- FROM THE CITY OF DUBLIN TO THE CITY OF COLUMBUS

ANNEXATION AREA #4  
 STATE OF OHIO  
 FRANKLIN COUNTY  
 CITY OF DUBLIN,  
 CITY OF COLUMBUS,  
 PERRY TOWNSHIP



# PROPOSED BOUNDARY ADJUSTMENT OF 13.224 AC. +/- FROM THE CITY OF DUBLIN TO THE CITY OF COLUMBUS

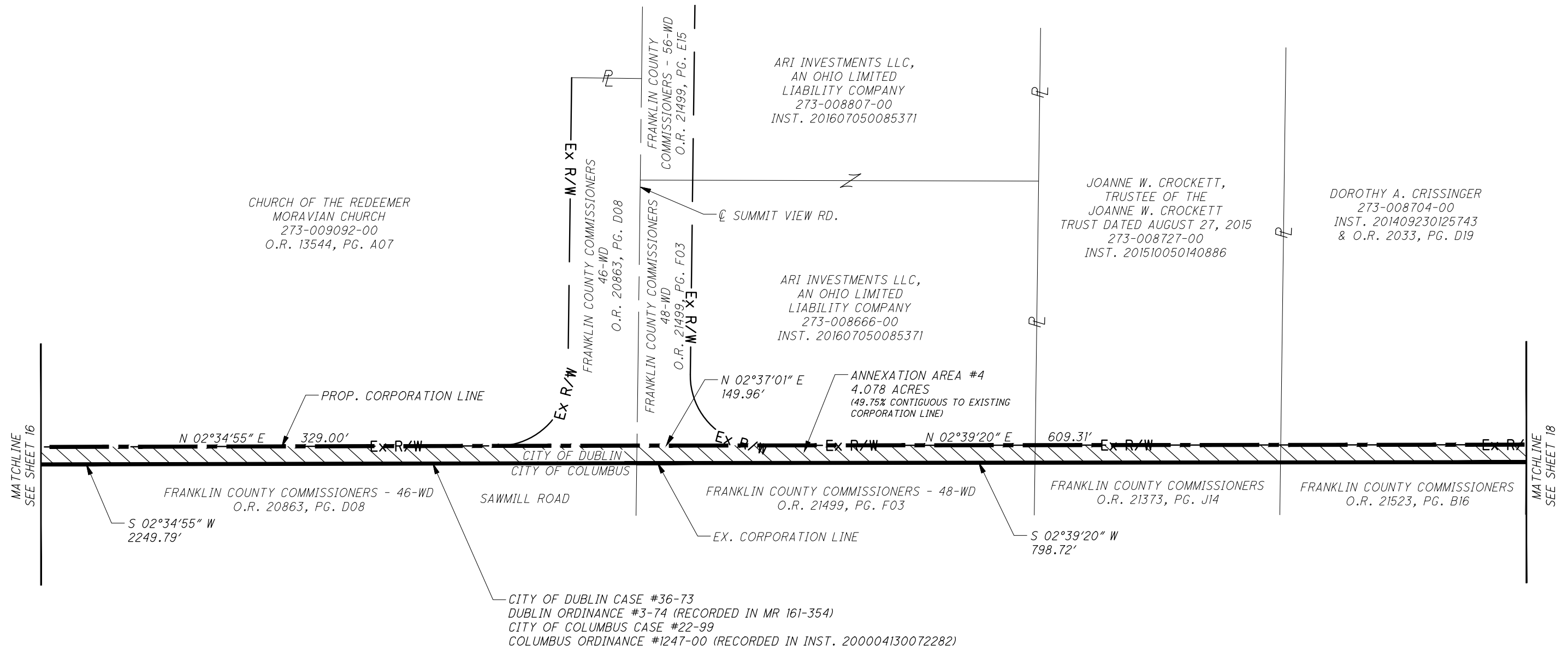
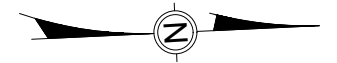
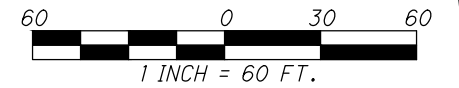
ANNEXATION AREA #4  
 STATE OF OHIO  
 FRANKLIN COUNTY  
 CITY OF DUBLIN,  
 CITY OF COLUMBUS,  
 PERRY TOWNSHIP





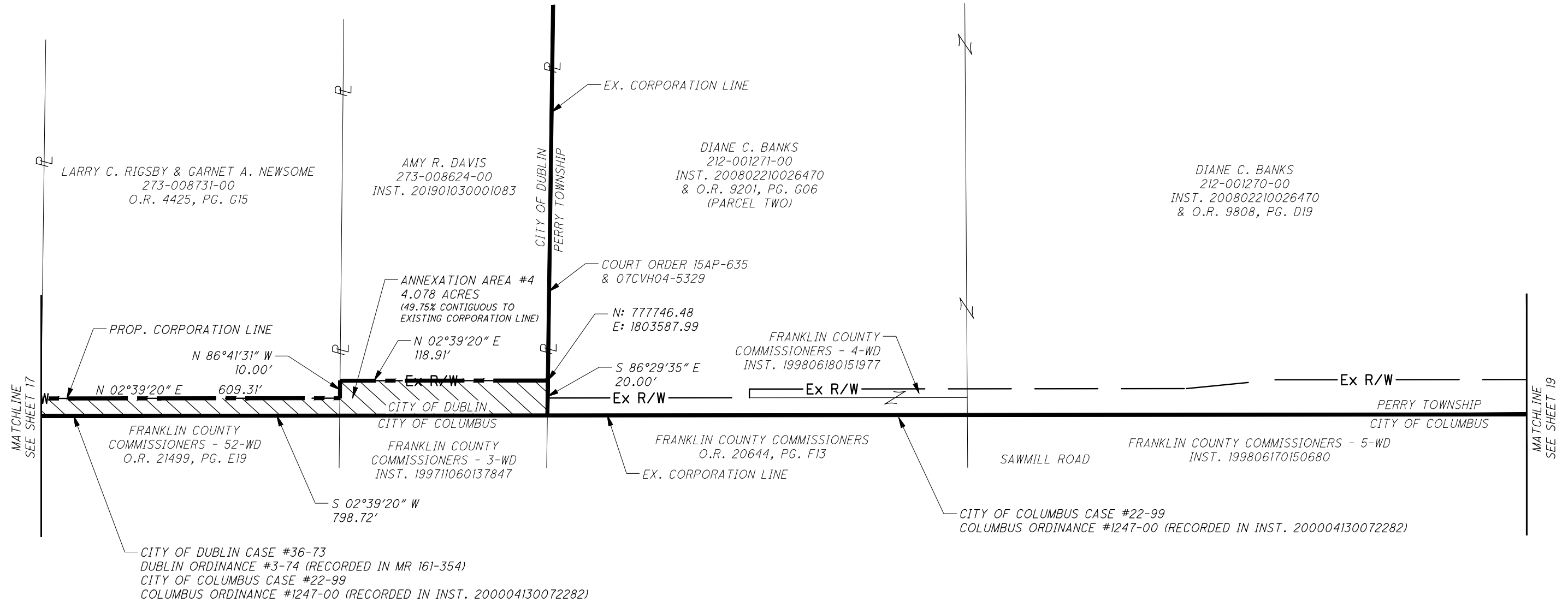
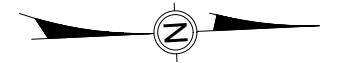
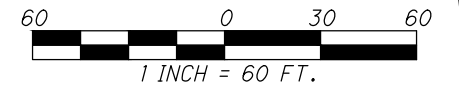
# PROPOSED BOUNDARY ADJUSTMENT OF 13.224 AC. +/- FROM THE CITY OF DUBLIN TO THE CITY OF COLUMBUS

ANNEXATION AREA #4  
STATE OF OHIO  
FRANKLIN COUNTY  
CITY OF DUBLIN,  
CITY OF COLUMBUS,  
PERRY TOWNSHIP



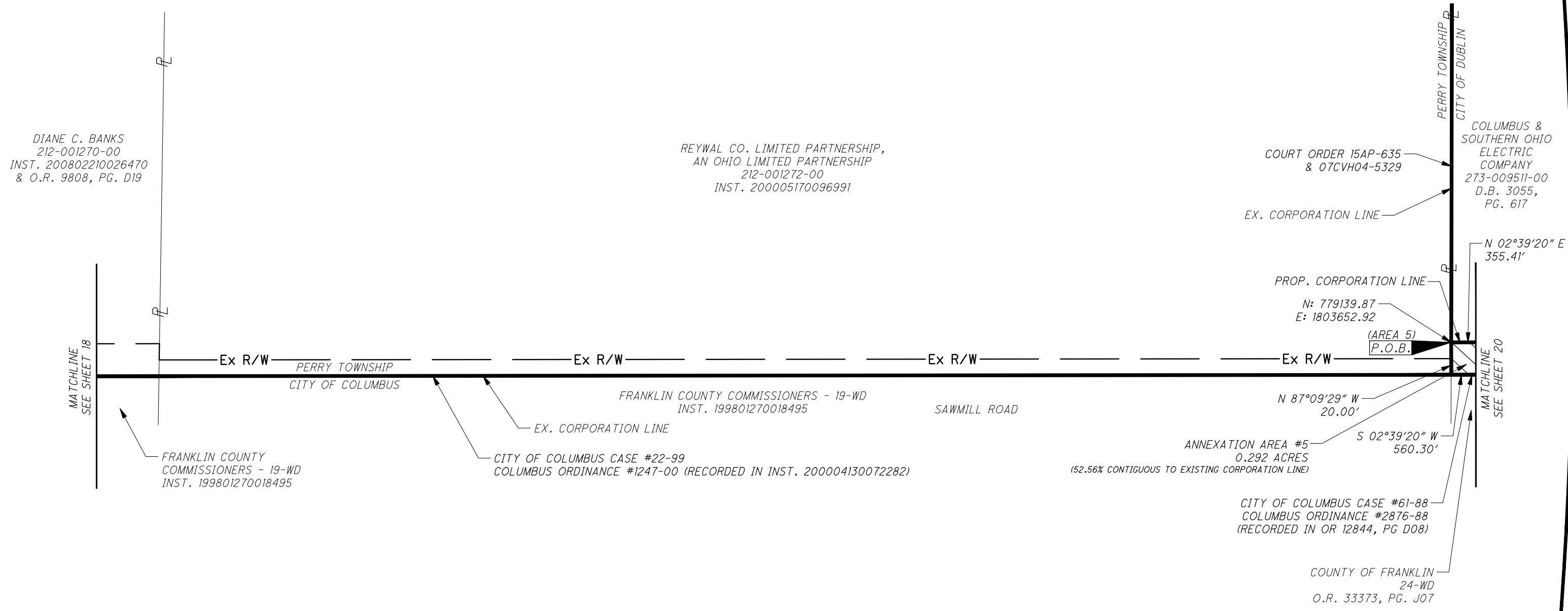
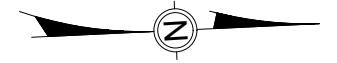
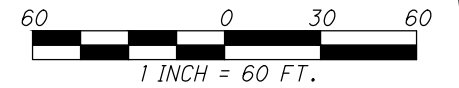
# PROPOSED BOUNDARY ADJUSTMENT OF 13.224 AC. +/- FROM THE CITY OF DUBLIN TO THE CITY OF COLUMBUS

**ANNEXATION AREA #4**  
 STATE OF OHIO  
 FRANKLIN COUNTY  
 CITY OF DUBLIN,  
 CITY OF COLUMBUS,  
 PERRY TOWNSHIP



# PROPOSED BOUNDARY ADJUSTMENT OF 13.224 AC. +/- FROM THE CITY OF DUBLIN TO THE CITY OF COLUMBUS

ANNEXATION AREA #5  
 STATE OF OHIO  
 FRANKLIN COUNTY  
 CITY OF DUBLIN,  
 CITY OF COLUMBUS,  
 PERRY TOWNSHIP

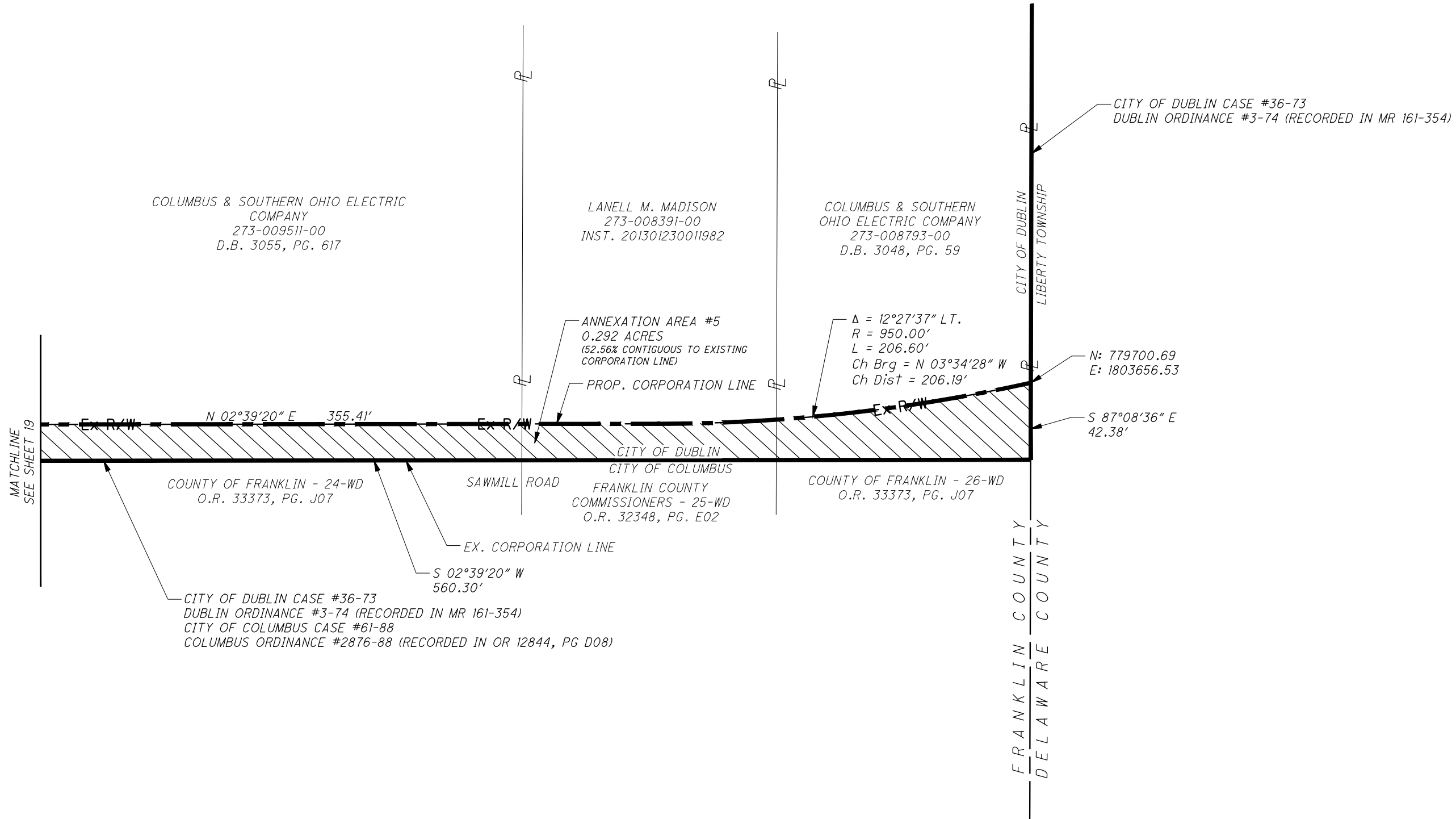
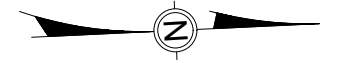
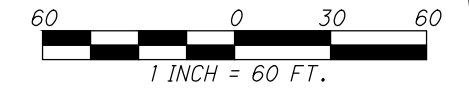






# PROPOSED BOUNDARY ADJUSTMENT OF 13.224 AC. +/- FROM THE CITY OF DUBLIN TO THE CITY OF COLUMBUS

ANNEXATION AREA #5  
STATE OF OHIO  
FRANKLIN COUNTY  
CITY OF DUBLIN,  
CITY OF COLUMBUS,  
PERRY TOWNSHIP







# PROPOSED BOUNDARY ADJUSTMENT OF 13.224 AC. +/- FROM THE CITY OF DUBLIN TO THE CITY OF COLUMBUS

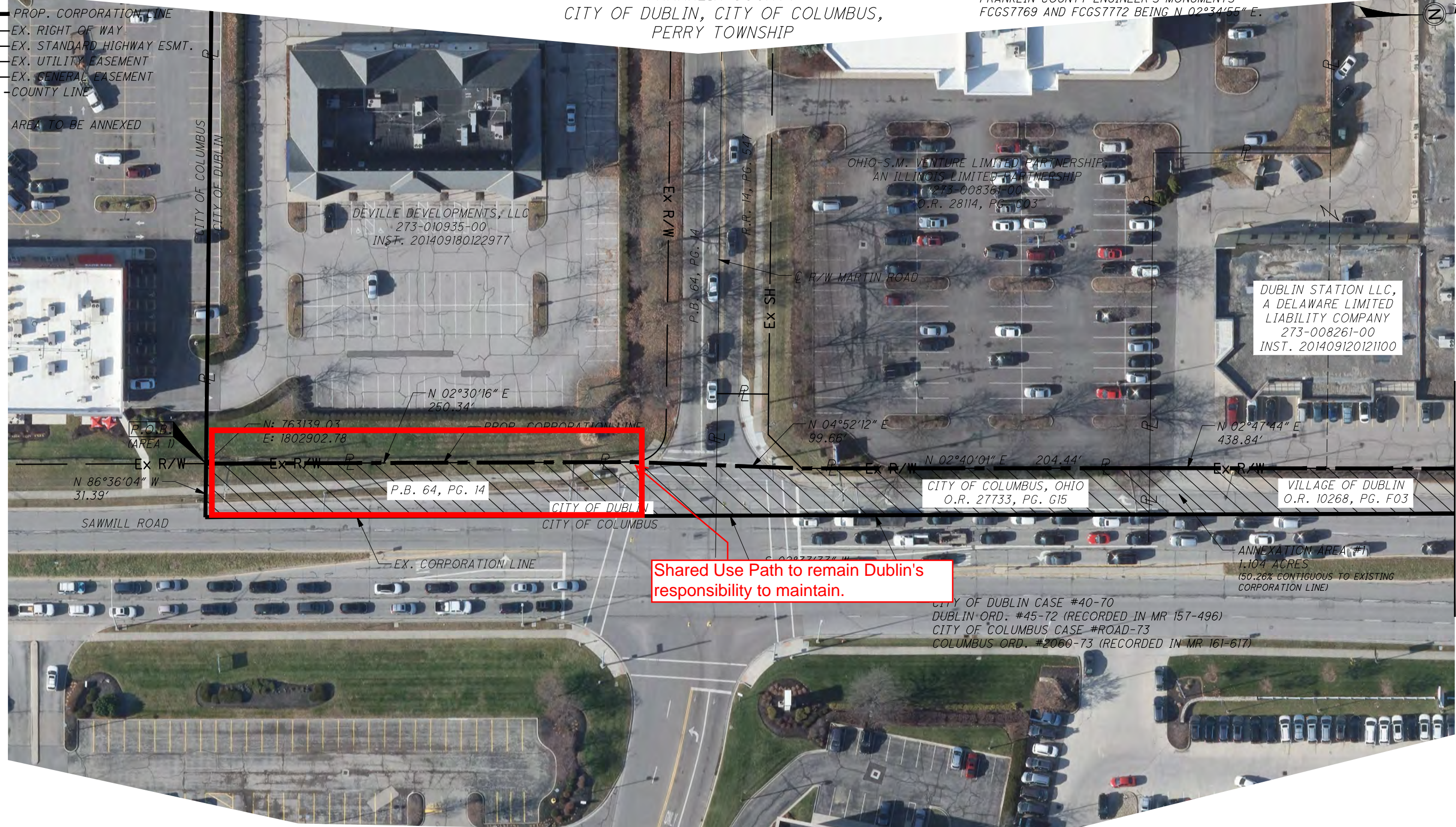
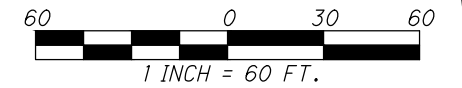
**LEGEND:**

- P.O.B. POINT OF BEGINNING
- EX. CORPORATION LINE
- PROP. CORPORATION LINE
- Ex R/W EX. RIGHT OF WAY
- Ex SH EX. STANDARD HIGHWAY ESMT.
- Ex U EX. UTILITY EASEMENT
- EX. GENERAL EASEMENT
- COUNTY LINE
- AREA TO BE ANNEXED

ANNEXATION AREA #1  
STATE OF OHIO  
FRANKLIN COUNTY  
CITY OF DUBLIN, CITY OF COLUMBUS,  
PERRY TOWNSHIP

**BASIS OF BEARINGS:**

BEARINGS ARE BASED ON THE BEARING BETWEEN  
FRANKLIN COUNTY ENGINEER'S MONUMENTS  
FCGS7769 AND FCGS7772 BEING N 02°34'55" E.



MATCHLINE  
SEE SHEET 2

Shared Use Path to remain Dublin's responsibility to maintain.

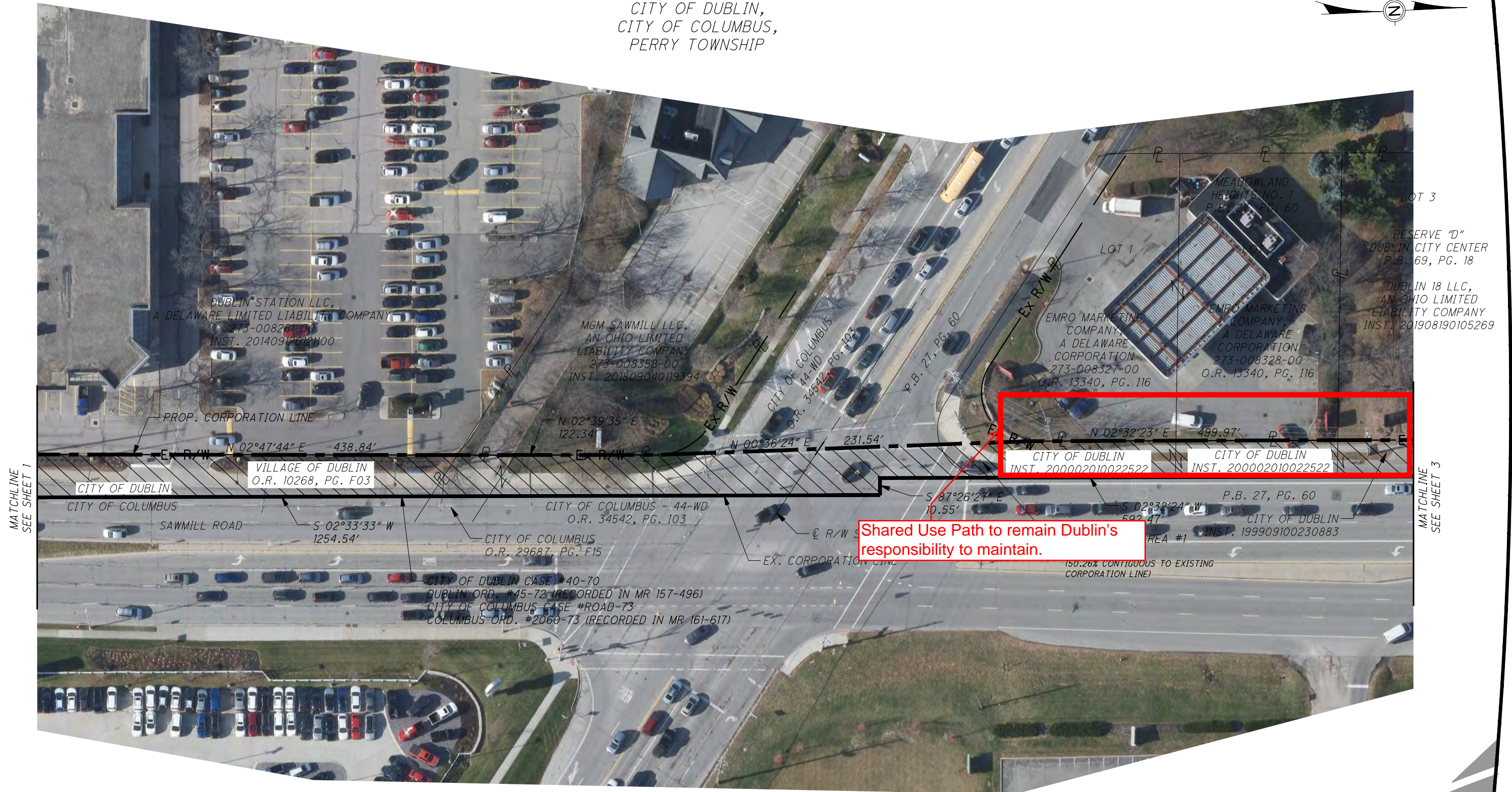
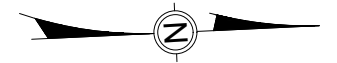
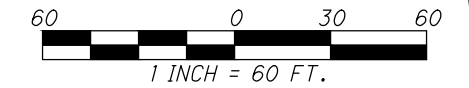
THIS EXHIBIT WAS CREATED USING AVAILABLE RECORD INFORMATION ONLY AND IS NOT AN ACTUAL FIELD SURVEY.





# PROPOSED BOUNDARY ADJUSTMENT OF 13.224 AC. +/- FROM THE CITY OF DUBLIN TO THE CITY OF COLUMBUS

ANNEXATION AREA #1  
STATE OF OHIO  
FRANKLIN COUNTY  
CITY OF DUBLIN,  
CITY OF COLUMBUS,  
PERRY TOWNSHIP







# PROPOSED BOUNDARY ADJUSTMENT OF 13.224 AC. +/- FROM THE CITY OF DUBLIN TO THE CITY OF COLUMBUS

## ANNEXATION AREAS #1 & #2

STATE OF OHIO  
FRANKLIN COUNTY  
CITY OF DUBLIN,  
CITY OF COLUMBUS,  
PERRY TOWNSHIP







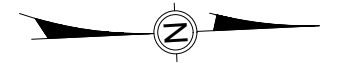
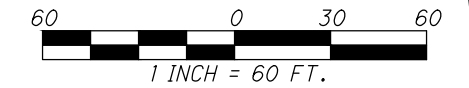




# PROPOSED BOUNDARY ADJUSTMENT OF 13.224 AC. +/- FROM THE CITY OF DUBLIN TO THE CITY OF COLUMBUS

## ANNEXATION AREA #3

STATE OF OHIO  
FRANKLIN COUNTY  
CITY OF DUBLIN,  
CITY OF COLUMBUS,  
PERRY TOWNSHIP



N 02°30'00" W  
466.81'

STATE OF OHIO  
4115D-WD  
D.B. 2993, PG. 176

SAWMILL ROAD

ANNEXATION AREA #3  
7.621 ACRES  
(48.64% CONTIGUOUS TO  
EXISTING CORPORATION LINE)

STATE OF OHIO  
4115D-WD  
D.B. 2993, PG. 176

STATE OF OHIO  
4115A-WD  
D.B. 2993, PG. 192

N 02°52'33" E  
279.85'

CITY OF DUBLIN  
O.R. 34726, PG. A01  
N 86°20'26" W  
25.00'

N 03°01'39" E 809.04'

PROP. CORPORATION LINE

EX. R/W

CITY OF DUBLIN  
CITY OF COLUMBUS

S 02°34'55" W 3871.31'

EX. CORPORATION LINE

CITY OF DUBLIN CASE #DUBLIN 9  
DUBLIN ORDINANCE #14-65 (RECORDED IN MR 138-617)  
CITY OF COLUMBUS CASE #ROAD-73  
COLUMBUS ORDINANCE #2060-73 (RECORDED IN MR 161-617)

MATCHLINE  
SEE SHEET 4

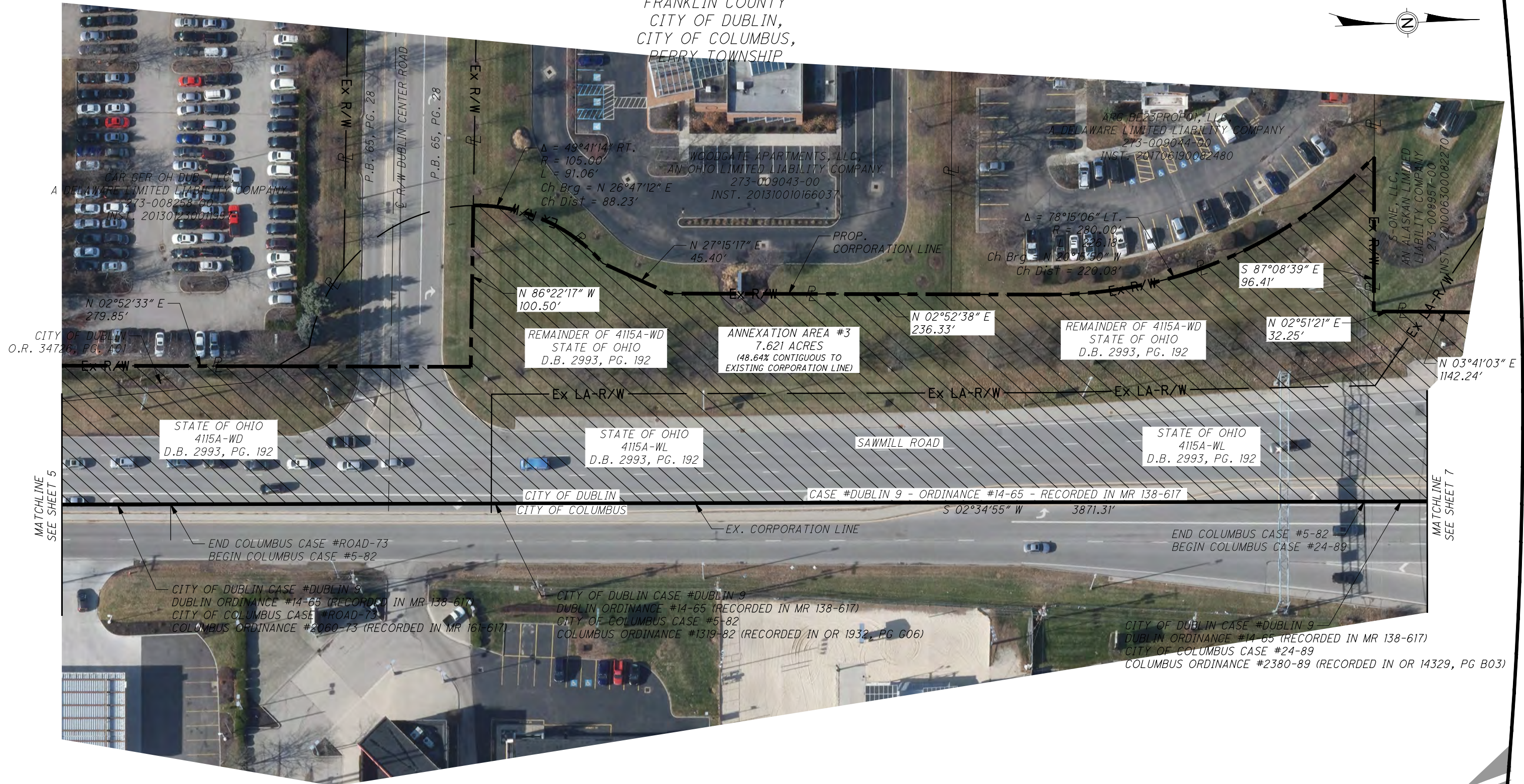
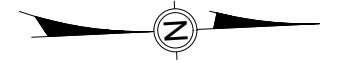
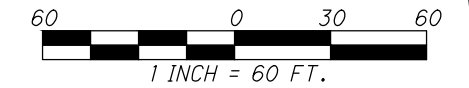
MATCHLINE  
SEE SHEET 6





# PROPOSED BOUNDARY ADJUSTMENT OF 13.224 AC. +/- FROM THE CITY OF DUBLIN TO THE CITY OF COLUMBUS

ANNEXATION AREA #3  
STATE OF OHIO  
FRANKLIN COUNTY  
CITY OF DUBLIN,  
CITY OF COLUMBUS,  
PERRY TOWNSHIP



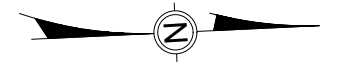
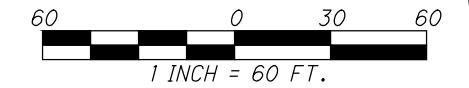




# PROPOSED BOUNDARY ADJUSTMENT OF 13.224 AC. +/- FROM THE CITY OF DUBLIN TO THE CITY OF COLUMBUS

ANNEXATION AREA #3

STATE OF OHIO  
 FRANKLIN COUNTY  
 CITY OF DUBLIN,  
 CITY OF COLUMBUS,  
 PERRY TOWNSHIP



S-ONE, LLC,  
 AN ALASKAN LIMITED  
 LIABILITY COMPANY  
 273-008957-00  
 INST. 201006300082270

STATE OF OHIO  
 4111-WL  
 D.B. 2853, PG. 260

I-270

STATE OF OHIO  
 4111-WL  
 D.B. 2853, PG. 260

N 03°41'03" E 1142.24'

PROP. CORPORATION LINE

STATE OF OHIO  
 4115A-WL  
 D.B. 2993, PG. 192

ANNEXATION AREA #3  
 7.621 ACRES  
 (48.64% CONTIGUOUS TO  
 EXISTING CORPORATION LINE)

SAWMILL ROAD

MATCHLINE  
 SEE SHEET 6

CITY OF DUBLIN  
 CITY OF COLUMBUS

S 02°34'55" W 3871.31'

EX. CORPORATION LINE

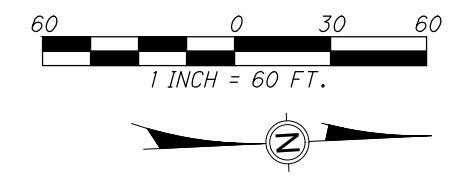
CITY OF DUBLIN CASE #DUBLIN 9  
 DUBLIN ORDINANCE #14-65 (RECORDED IN MR 138-617)  
 CITY OF COLUMBUS CASE #24-89  
 COLUMBUS ORDINANCE #2380-89 (RECORDED IN OR 14329, PG B03)

MATCHLINE  
 SEE SHEET 8





# PROPOSED BOUNDARY ADJUSTMENT OF 13.224 AC. +/- FROM THE CITY OF DUBLIN TO THE CITY OF COLUMBUS



ANNEXATION AREA #3  
STATE OF OHIO  
FRANKLIN COUNTY  
CITY OF DUBLIN,  
CITY OF COLUMBUS,  
PERRY TOWNSHIP





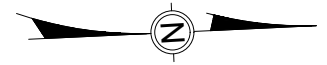
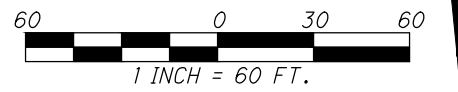


# PROPOSED BOUNDARY ADJUSTMENT OF 13.224 AC. +/- FROM THE CITY OF DUBLIN TO THE CITY OF COLUMBUS



ANNEXATION AREA #3

STATE OF OHIO  
FRANKLIN COUNTY  
CITY OF DUBLIN,  
CITY OF COLUMBUS,  
PERRY TOWNSHIP



PERRY TOWNSHIP,  
FRANKLIN COUNTY, OHIO  
BOARD OF TRUSTEES  
273-008259-00  
D.B. 2433, PG. 600

PERRY TOWNSHIP,  
FRANKLIN COUNTY, OHIO,  
BOARD OF TRUSTEES  
273-008792-00  
D.B. 2433, PG. 600

RIC PROPERTIES, LTD.  
273-008890-00  
O.R. 6373, PG. 1-15

ANNEXATION AREA #3  
7.621 ACRES  
(48.64% CONTIGUOUS TO  
EXISTING CORPORATION LINE)

PROP.  
CORPORATION LINE

VILLAGE AT INVERNESS  
PROFESSIONAL OFFICE CONDOMINIUM  
C.P.B. 32, PG. 31

VILLAGE AT INVERNESS  
PROFESSIONAL OFFICE CONDOMINIUM  
2ND AMENDMENT  
C.P.B. 34, PG. 28

MILLER  
INVESTMENTS CO.,  
AN OHIO GENERAL  
PARTNERSHIP  
273-009469-00  
INST. 199806250157989

MILCO OFFICE PARK  
P.B. 87, PG. 74  
LOT 1

CITY OF DUBLIN  
117-WDV  
INST. 201409150121571

MATCHLINE  
SEE SHEET 8

MATCHLINE  
SEE SHEET 10

STATE OF OHIO - 4111-BWD  
D.B. 2810, PG. 565

STATE OF OHIO - 4111C-WD  
D.B. 2879, PG. 135

SAWMILL ROAD

P.B. 61, PG. 42

STATE OF OHIO  
4111-AWD  
D.B. 2863, PG. 634

BEGIN CASE #BC-1990

CITY OF COLUMBUS CASE #BC-1990  
COLUMBUS ORDINANCE #2718-89  
CITY OF DUBLIN CASE #36-73  
DUBLIN ORDINANCE #3-74 (RECORDED IN MR 161-354)

FRANKLIN COUNTY  
COMMISSIONERS - 12-WD  
O.R. 10522, PG. D02

S 02°34'55" W  
3871.31'

CITY OF DUBLIN CASE #36-73  
DUBLIN ORDINANCE #3-74 (RECORDED IN MR 161-354)  
CITY OF COLUMBUS CASE #24-89  
COLUMBUS ORDINANCE #2380-89 (RECORDED IN OR 14329, PG B03)

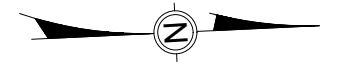
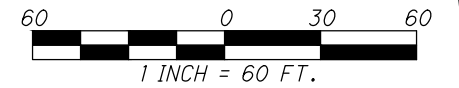
CITY OF DUBLIN  
CITY OF COLUMBUS



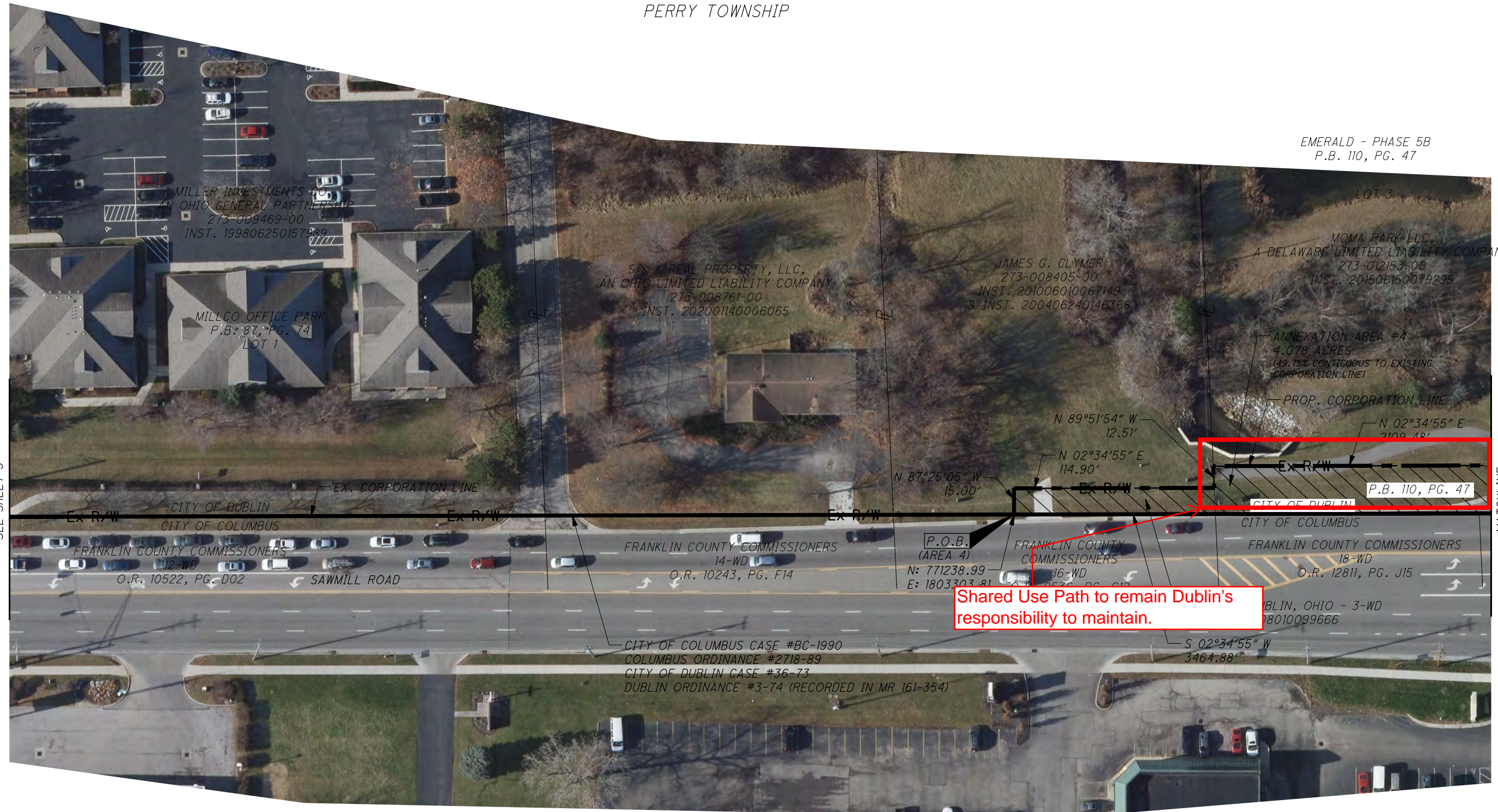


# PROPOSED BOUNDARY ADJUSTMENT OF 13.224 AC. +/- FROM THE CITY OF DUBLIN TO THE CITY OF COLUMBUS

ANNEXATION AREA #4  
STATE OF OHIO  
FRANKLIN COUNTY  
CITY OF DUBLIN,  
CITY OF COLUMBUS,  
PERRY TOWNSHIP



EMERALD - PHASE 5B  
P.B. 110, PG. 47



MATCHLINE  
SEE SHEET 9

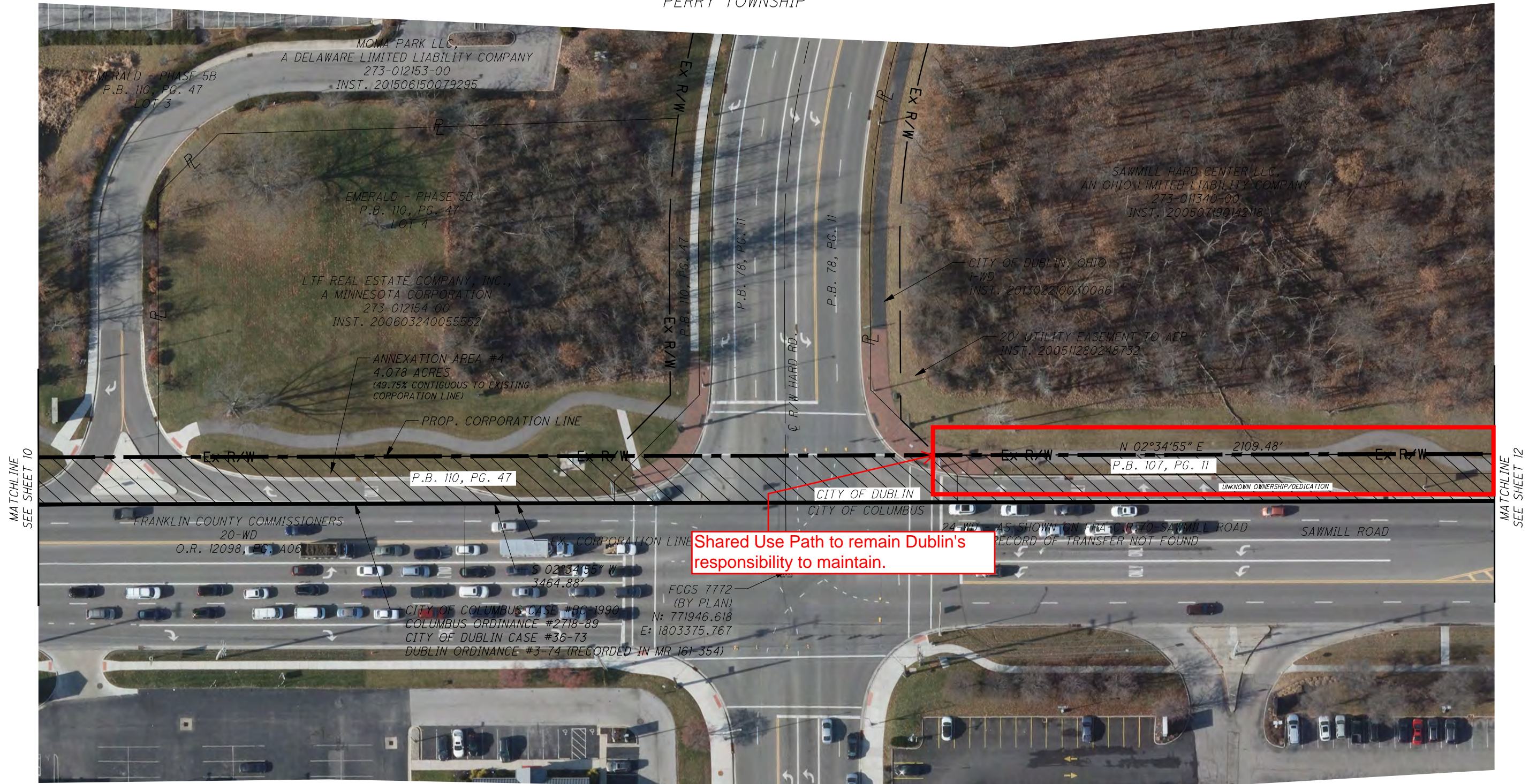
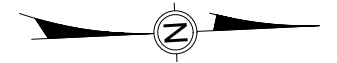
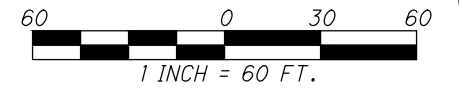
MATCHLINE  
SEE SHEET 11





# PROPOSED BOUNDARY ADJUSTMENT OF 13.224 AC. +/- FROM THE CITY OF DUBLIN TO THE CITY OF COLUMBUS

ANNEXATION AREA #4  
STATE OF OHIO  
FRANKLIN COUNTY  
CITY OF DUBLIN,  
CITY OF COLUMBUS,  
PERRY TOWNSHIP

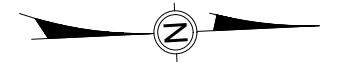
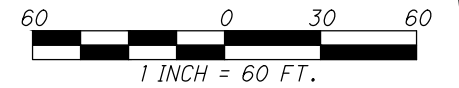






# PROPOSED BOUNDARY ADJUSTMENT OF 13.224 AC. +/- FROM THE CITY OF DUBLIN TO THE CITY OF COLUMBUS

ANNEXATION AREA #4  
STATE OF OHIO  
FRANKLIN COUNTY  
CITY OF DUBLIN,  
CITY OF COLUMBUS,  
PERRY TOWNSHIP



MATCHLINE  
SEE SHEET 11

MATCHLINE  
SEE SHEET 13

Shared Use Path to remain Dublin's responsibility to maintain.

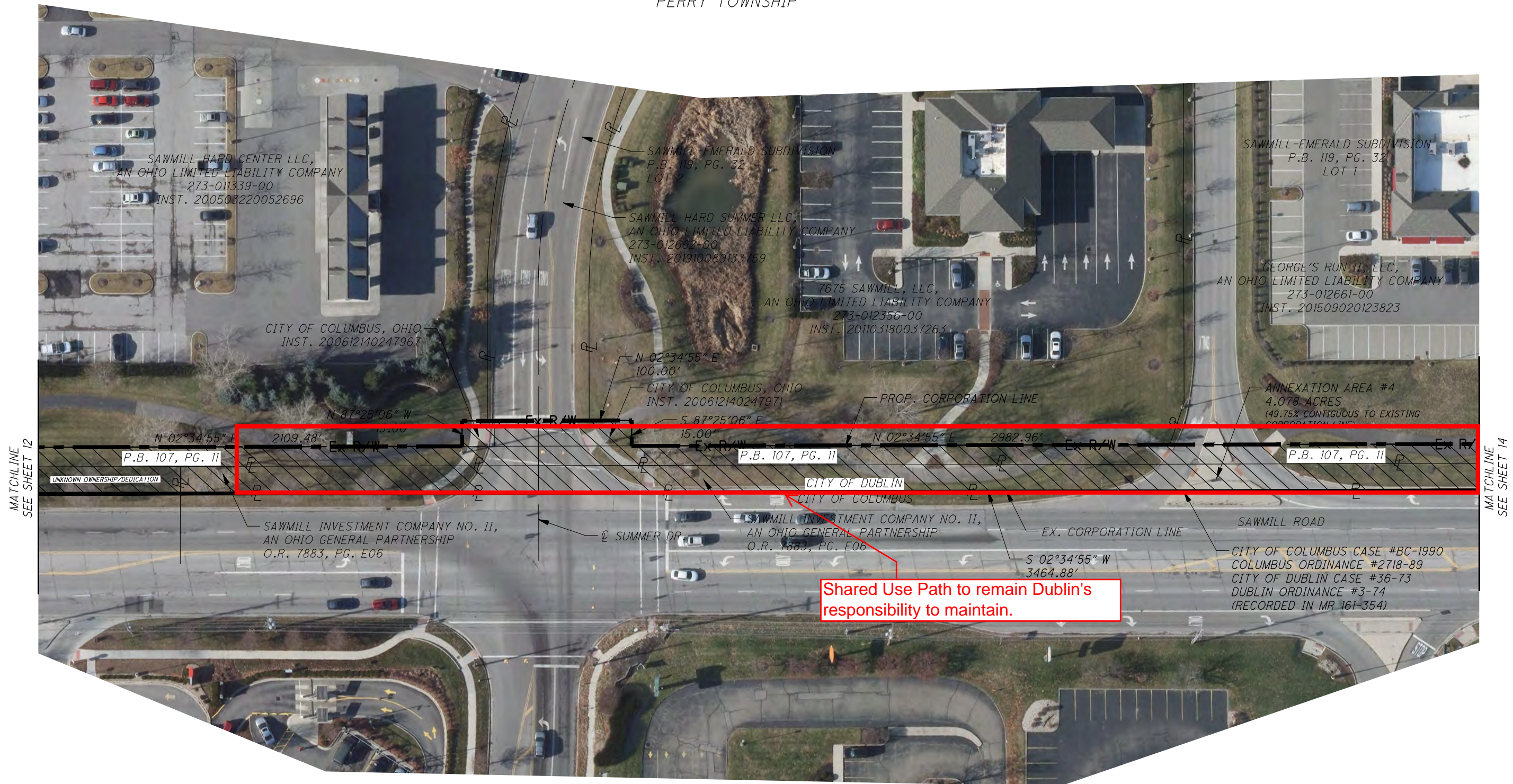
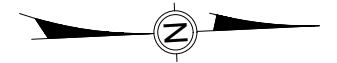
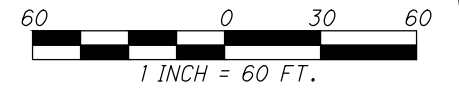
Shared Use Path to remain Dublin's responsibility to maintain.





# PROPOSED BOUNDARY ADJUSTMENT OF 13.224 AC. +/- FROM THE CITY OF DUBLIN TO THE CITY OF COLUMBUS

ANNEXATION AREA #4  
STATE OF OHIO  
FRANKLIN COUNTY  
CITY OF DUBLIN,  
CITY OF COLUMBUS,  
PERRY TOWNSHIP



MATCHLINE  
SEE SHEET 12

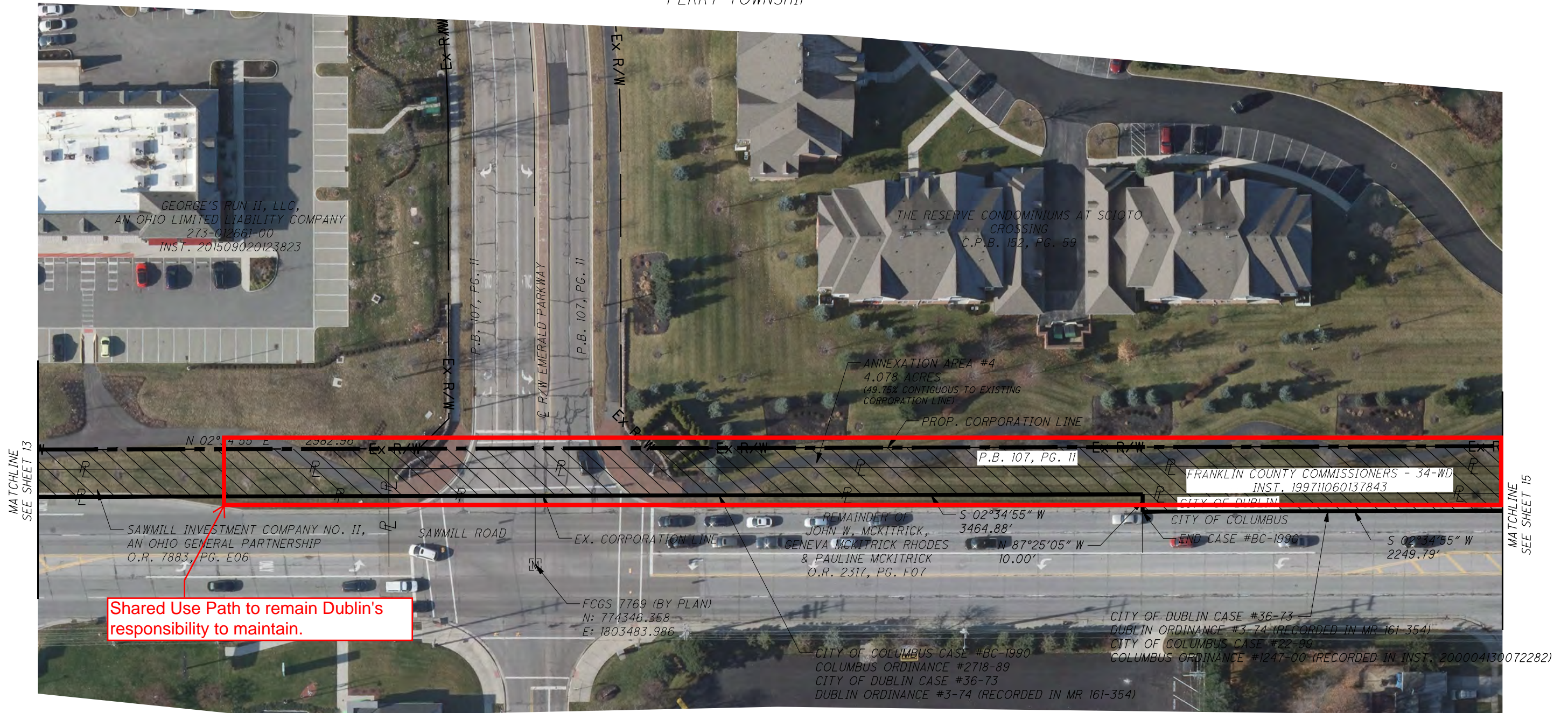
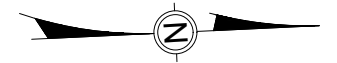
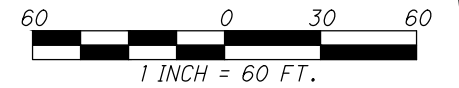
MATCHLINE  
SEE SHEET 14





# PROPOSED BOUNDARY ADJUSTMENT OF 13.224 AC. +/- FROM THE CITY OF DUBLIN TO THE CITY OF COLUMBUS

ANNEXATION AREA #4  
STATE OF OHIO  
FRANKLIN COUNTY  
CITY OF DUBLIN,  
CITY OF COLUMBUS,  
PERRY TOWNSHIP

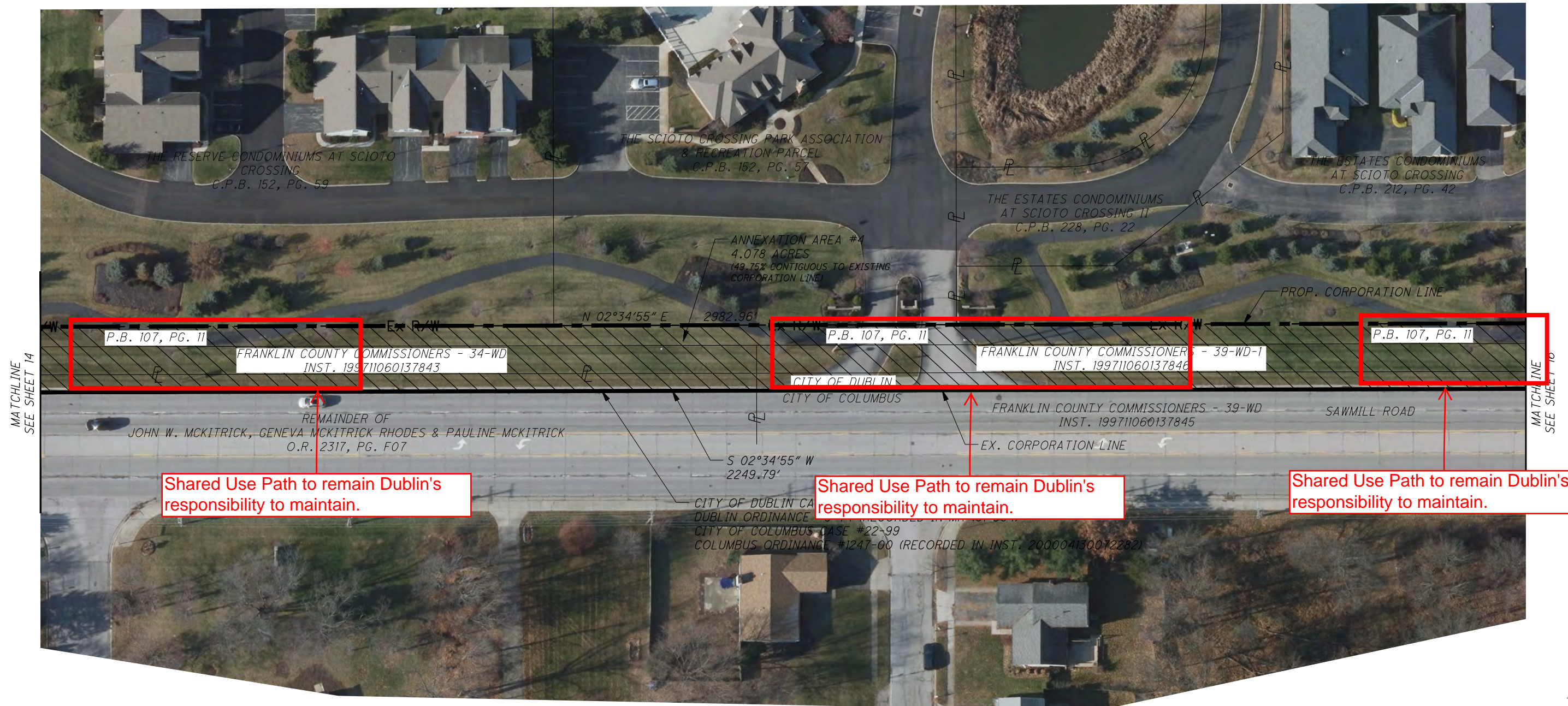
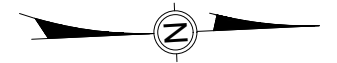
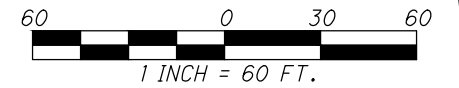






# PROPOSED BOUNDARY ADJUSTMENT OF 13.224 AC. +/- FROM THE CITY OF DUBLIN TO THE CITY OF COLUMBUS

ANNEXATION AREA #4  
STATE OF OHIO  
FRANKLIN COUNTY  
CITY OF DUBLIN,  
CITY OF COLUMBUS,  
PERRY TOWNSHIP



MATCHLINE  
SEE SHEET 14

MATCHLINE  
SEE SHEET 16

Shared Use Path to remain Dublin's responsibility to maintain.

Shared Use Path to remain Dublin's responsibility to maintain.

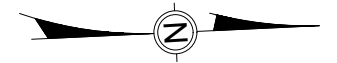
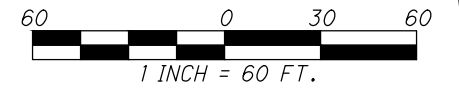
Shared Use Path to remain Dublin's responsibility to maintain.





# PROPOSED BOUNDARY ADJUSTMENT OF 13.224 AC. +/- FROM THE CITY OF DUBLIN TO THE CITY OF COLUMBUS

ANNEXATION AREA #4  
STATE OF OHIO  
FRANKLIN COUNTY  
CITY OF DUBLIN,  
CITY OF COLUMBUS,  
PERRY TOWNSHIP

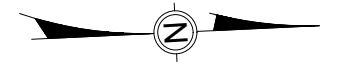
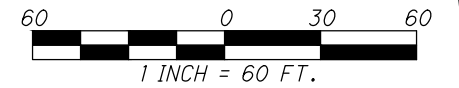






# PROPOSED BOUNDARY ADJUSTMENT OF 13.224 AC. +/- FROM THE CITY OF DUBLIN TO THE CITY OF COLUMBUS

ANNEXATION AREA #4  
STATE OF OHIO  
FRANKLIN COUNTY  
CITY OF DUBLIN,  
CITY OF COLUMBUS,  
PERRY TOWNSHIP

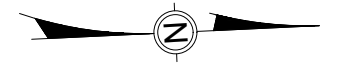
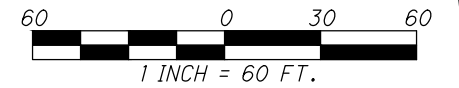






# PROPOSED BOUNDARY ADJUSTMENT OF 13.224 AC. +/- FROM THE CITY OF DUBLIN TO THE CITY OF COLUMBUS

ANNEXATION AREA #4  
STATE OF OHIO  
FRANKLIN COUNTY  
CITY OF DUBLIN,  
CITY OF COLUMBUS,  
PERRY TOWNSHIP



MATCHLINE  
SEE SHEET 17

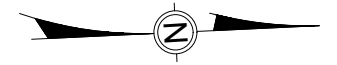
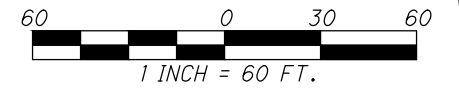
MATCHLINE  
SEE SHEET 19





# PROPOSED BOUNDARY ADJUSTMENT OF 13.224 AC. +/- FROM THE CITY OF DUBLIN TO THE CITY OF COLUMBUS

ANNEXATION AREA #5  
STATE OF OHIO  
FRANKLIN COUNTY  
CITY OF DUBLIN,  
CITY OF COLUMBUS,  
PERRY TOWNSHIP







# PROPOSED BOUNDARY ADJUSTMENT OF 13.224 AC. +/- FROM THE CITY OF DUBLIN TO THE CITY OF COLUMBUS

ANNEXATION AREA #5  
STATE OF OHIO  
FRANKLIN COUNTY  
CITY OF DUBLIN,  
CITY OF COLUMBUS,  
PERRY TOWNSHIP

