



OHIO
UNIVERSITY

DUBLIN CAMPUS ADDITION | EXTERIOR SIGNAGE & BRANDING

08.11.2020

THE INTENT OF THESE DRAWINGS IS FOR SELECTION AND FABRICATION OF APPROVED OU SIGNAGE COMPONENTS.

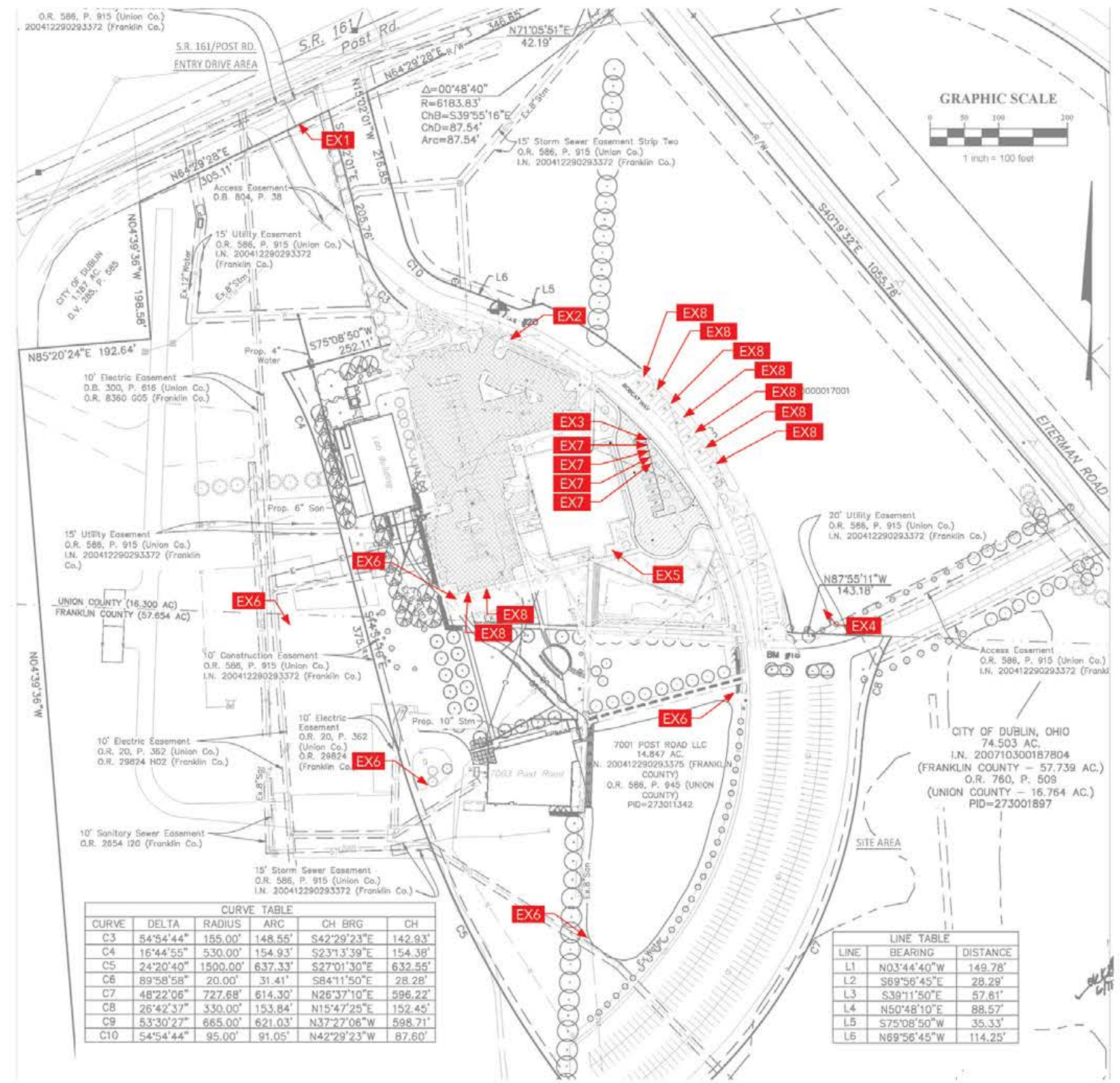
THESE DRAWING WERE PREPARED BY MOODY NOLAN INC. COLS, OH 43215
CONTACT: TOM HOLMES FOR MORE INFORMATION IF NEEDED.

NOTE TO FABRICATOR
FABRICATOR TO FIELD VERIFY ALL MEASUREMENTS, WALLS, AND CONDITIONS
BEFORE PRODUCTION AND INSTALLATION. ANY DISCREPANCIES BETWEEN
DRAWINGS AND FIELD CONDITIONS TO BE REPORTED TO ARCHITECT TO
DETERMINE SOLUTION.

EXTERIOR SIGNAGE LIST

TYPE	NAME	NEW SIGN	EXISTING SIGN	QTY.
EX1	ENTRANCE SIGN		X	1
EX2	DIRECTIONAL SIGN - MULTI TENANT	X		1
EX3	DIRECTIONAL SIGN - SINGLE TENANT	X		1
EX4	DIRECTIONAL SIGN - MULTI TENANT	X		1
EX5	BUILDING SIGN		X	1
EX6	PEDESTRIAN SIGN		X	5
EX7	PATIENT PARKING SIGN	X		5*
EX8	PATIENT PARKING ROW SIGN	X		9*

*QUANTITY TO BE DETERMINED



CURVE	DELTA	RADIUS	ARC	CH BRG	CH
C3	54°54'44"	155.00'	148.55'	S42°29'23"E	142.93'
C4	16°44'55"	530.00'	154.93'	S23°13'39"E	154.38'
C5	24°20'40"	1500.00'	637.33'	S27°01'30"E	632.55'
C6	89°58'58"	20.00'	31.41'	S84°11'50"E	28.28'
C7	48°22'06"	727.68'	614.30'	N26°37'10"E	596.22'
C8	26°42'37"	330.00'	153.84'	N15°47'25"E	152.45'
C9	53°30'27"	665.00'	621.03'	N37°27'06"W	598.71'
C10	54°54'44"	95.00'	91.05'	N42°29'23"W	87.60'

LINE	BEARING	DISTANCE
L1	N03°44'40"W	149.78'
L2	S69°56'45"E	28.29'
L3	S39°11'50"E	57.81'
L4	N50°48'10"E	88.57'
L5	S75°08'50"W	35.33'
L6	N69°56'45"W	114.25'

NOTE TO FABRICATOR
 FABRICATOR TO FIELD VERIFY ALL MEASUREMENTS, WALLS, AND CONDITIONS BEFORE PRODUCTION AND INSTALLATION. ANY DISCREPANCIES BETWEEN DRAWINGS AND FIELD CONDITIONS TO BE REPORTED TO ARCHITECT TO DETERMINE SOLUTION.

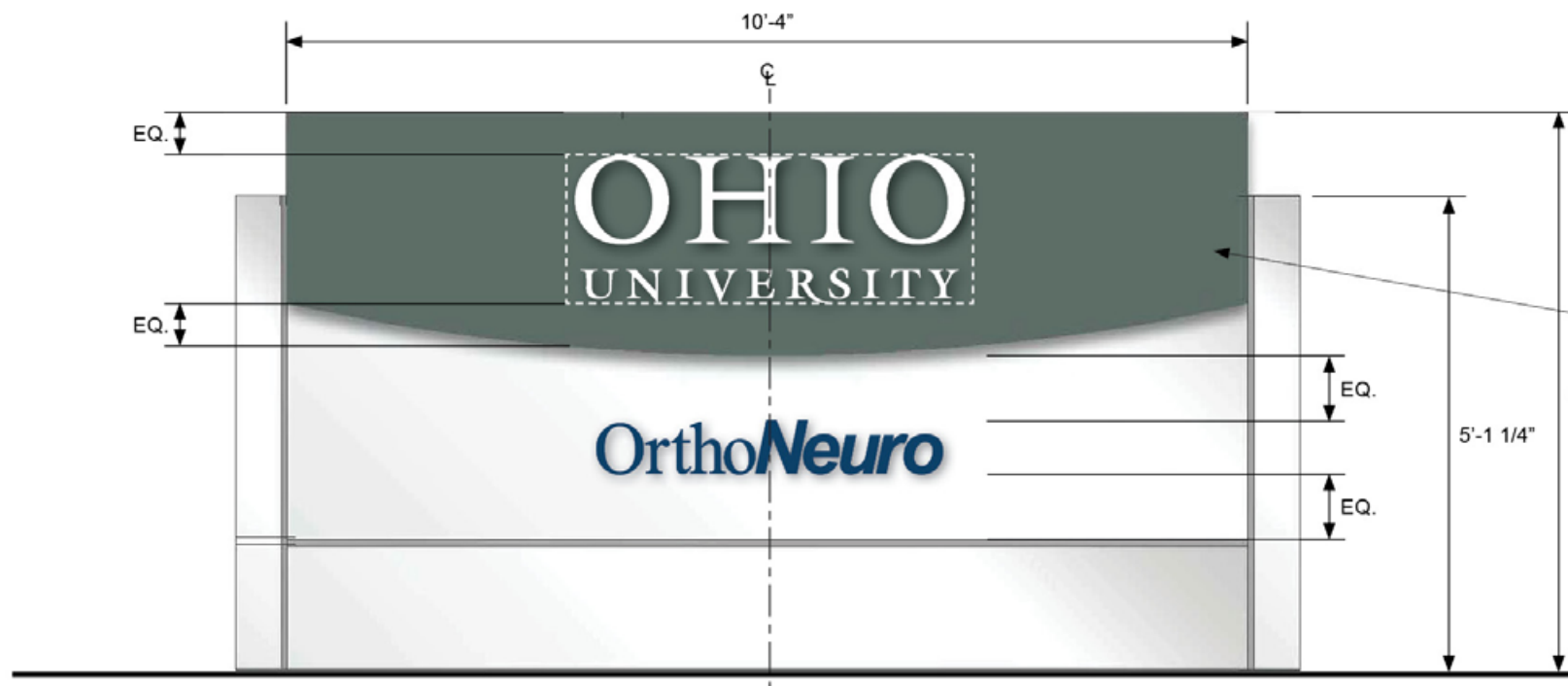


③ EX1 - OHIO UNIVERSITY LOGO
 SCALE: 1" = 1'-0"

1/2" THICK" DIMENSIONAL TEXT TO BE PAINTED TO MATCH PANTONE 7694.
 CONSTRUCTION AND INSTALLATION TO MATCH EXISTING DIMENSIONAL SIGN ELEMENTS
 QUANTITY: 2 (2-SIDED SIGN)
 FINAL ARTWORK TO BE PROVIDED BY MOODY NOLAN



④ EX1 - ORTHONEURO LOGO
 SCALE: 1" = 1'-0"

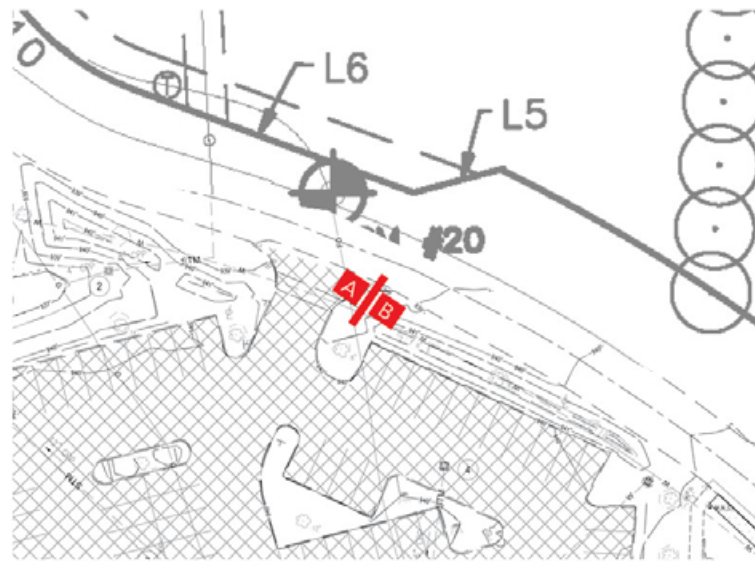


① EX1 - ENTRANCE SIGN
 SCALE: 1/2" = 1'-0"

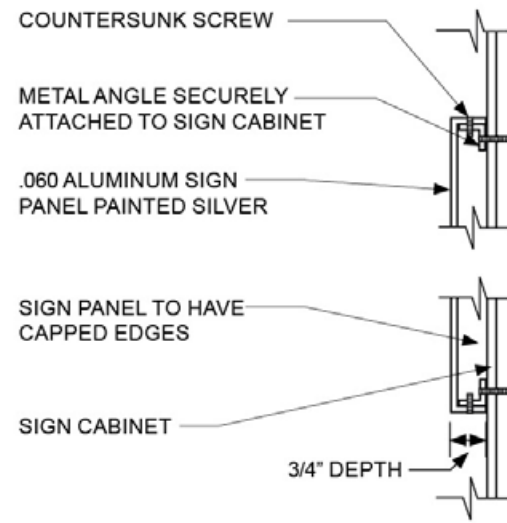
EXISTING OHIO UNIVERSITY LOGO AND SIGN TEXT TO BE REMOVED FROM BOTH SIDES
 EXISTING GREEN FACES TO BE RE-PAINTED. FINAL COLOR TO BE DETERMINED.
 EXISTING SILVER FACES TO BE RE-PAINTED. FINAL COLOR TO BE DETERMINED.



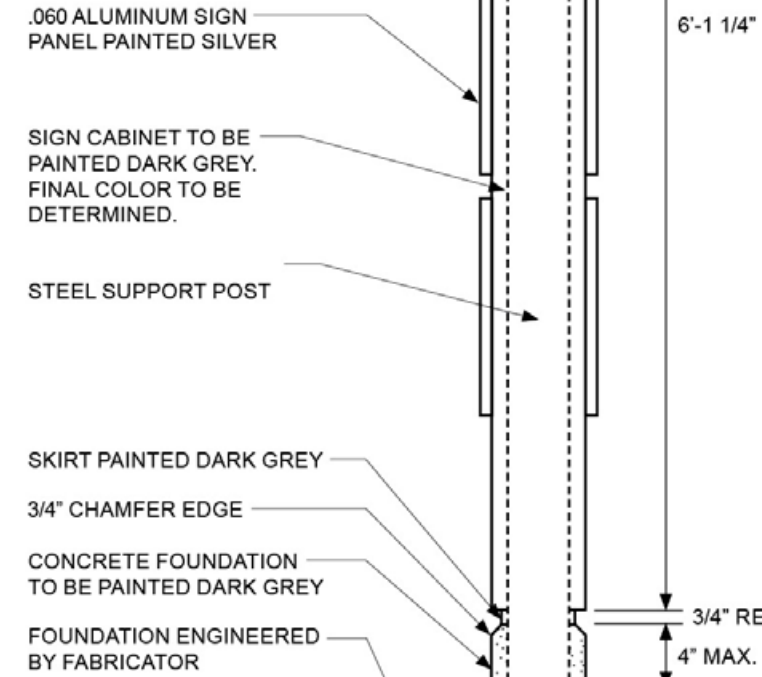
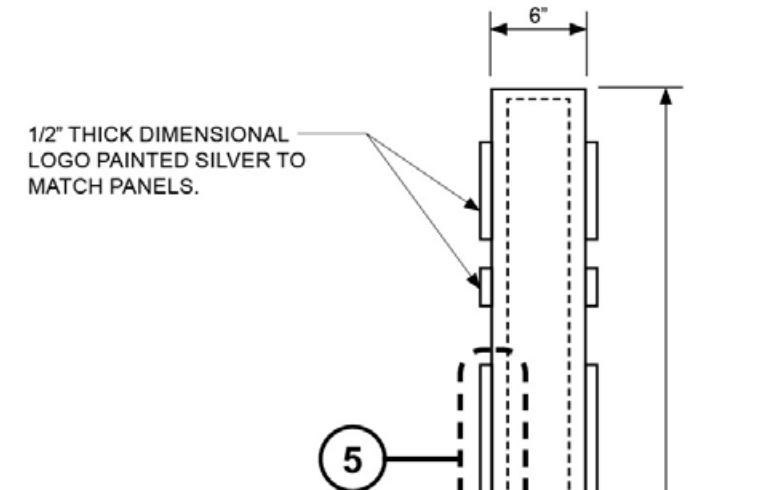
② EX1 - EXISTING PHOTO



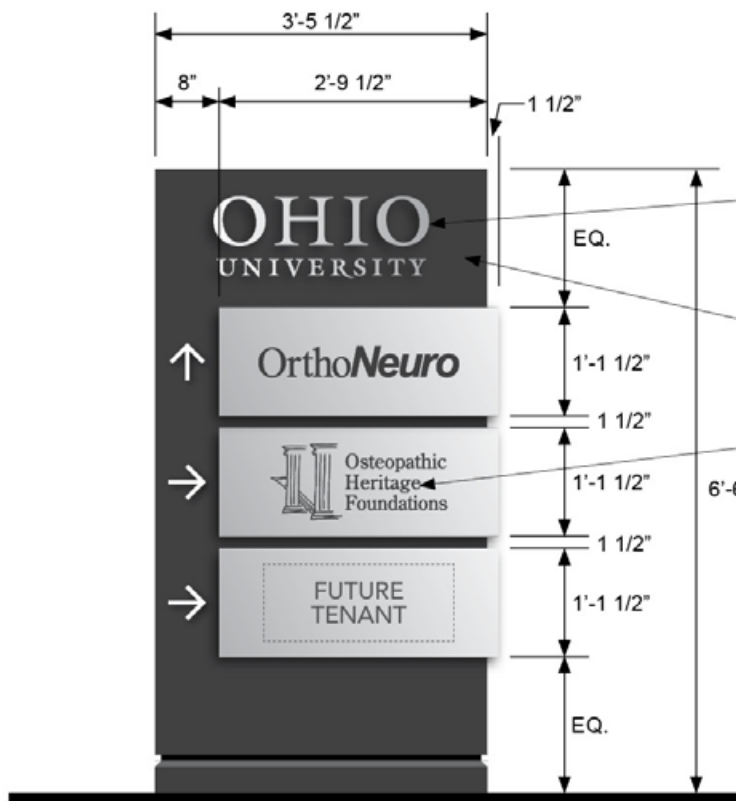
4 EX2 - MULTI-DIRECTIONAL SIGN - SITE VIEW



5 EX2 - SIGN PANEL - DETAIL
SCALE: 3" = 1'-0"

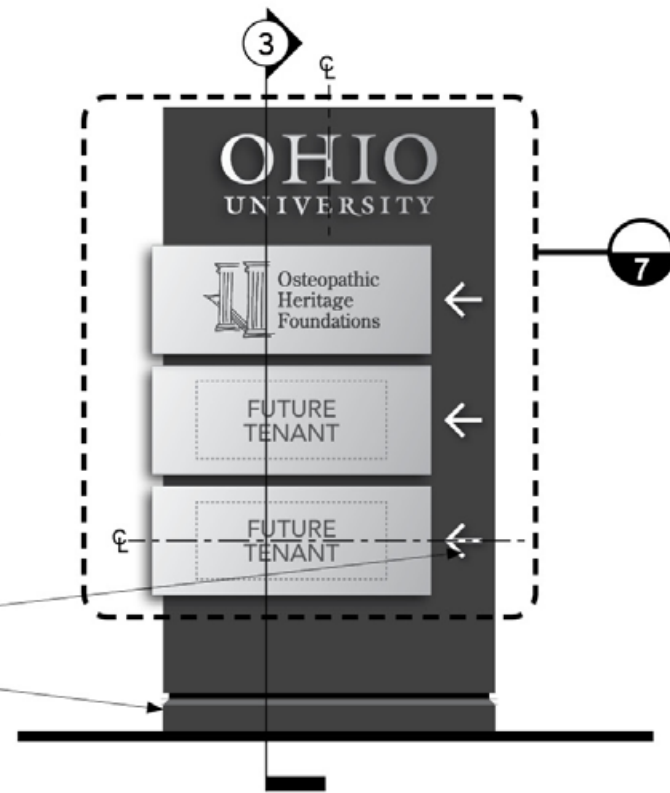


3 EX2 - SECTION
SCALE: 1" = 1'-0"

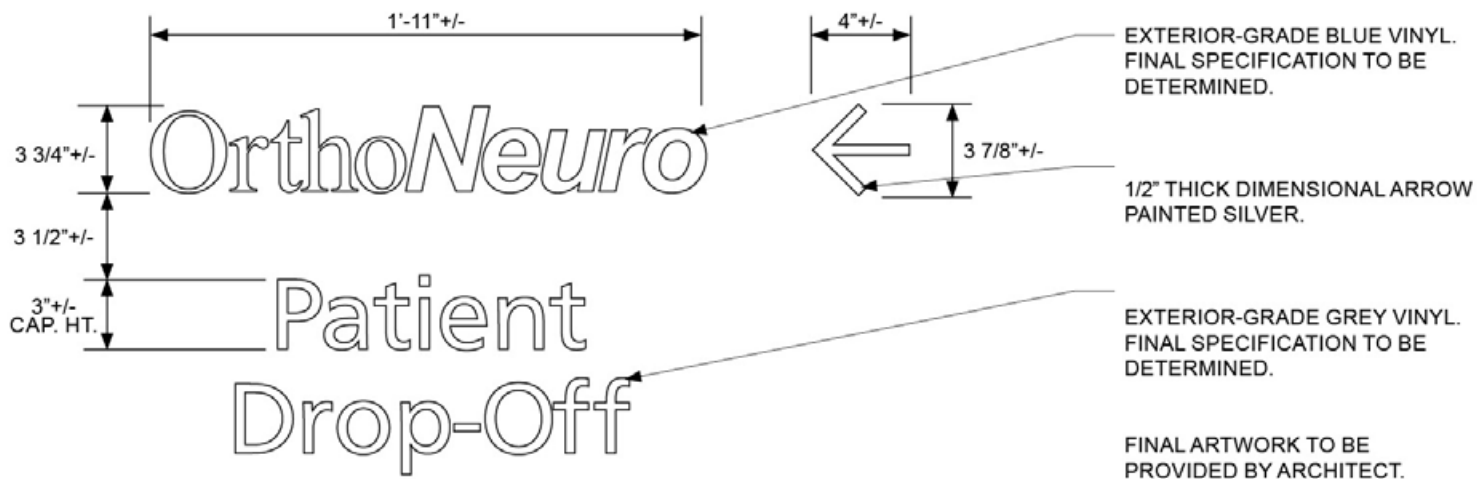


1 EX2 - MULTI-DIRECTIONAL SIGN - SIDE A
SCALE: 1/2" = 1'-0"

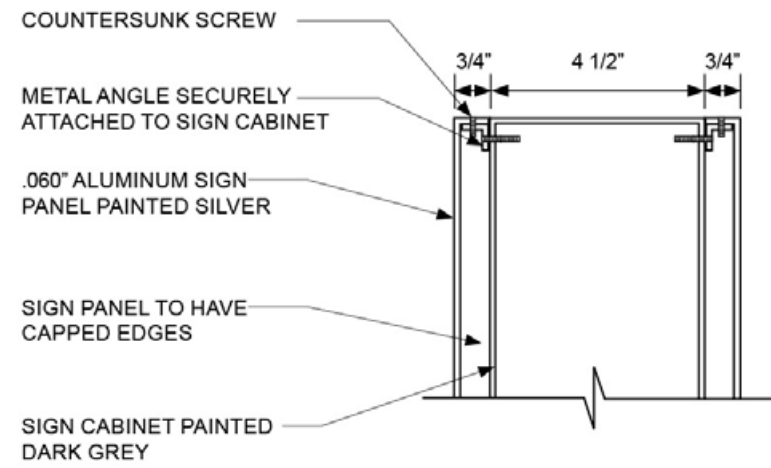
- 1/2" THICK DIMENSIONAL LOGO PAINTED SILVER TO MATCH PANELS.
- SIGN CABINET TO BE PAINTED DARK GREY. FINAL COLOR TO BE DETERMINED.
- .060" ALUMINUM PANELS TO BE PAINTED SILVER. LOGOS TO BE EXTERIOR-GRADE DARK GREY VINYL.
- 'FUTURE TENANT' PANELS TO BE INSTALLED BLANK AND WITHOUT ARROW.
- ARROWS TO BE CENTERED ON PANELS
- FOUNDATION PAINTED TO MATCH DARK GREY SIGN CABINET



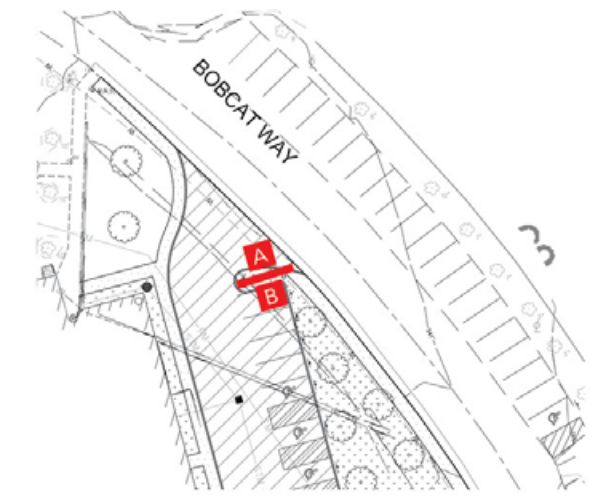
2 EX2 - MULTI-DIRECTIONAL SIGN - SIDE B
SCALE: 1/2" = 1'-0"



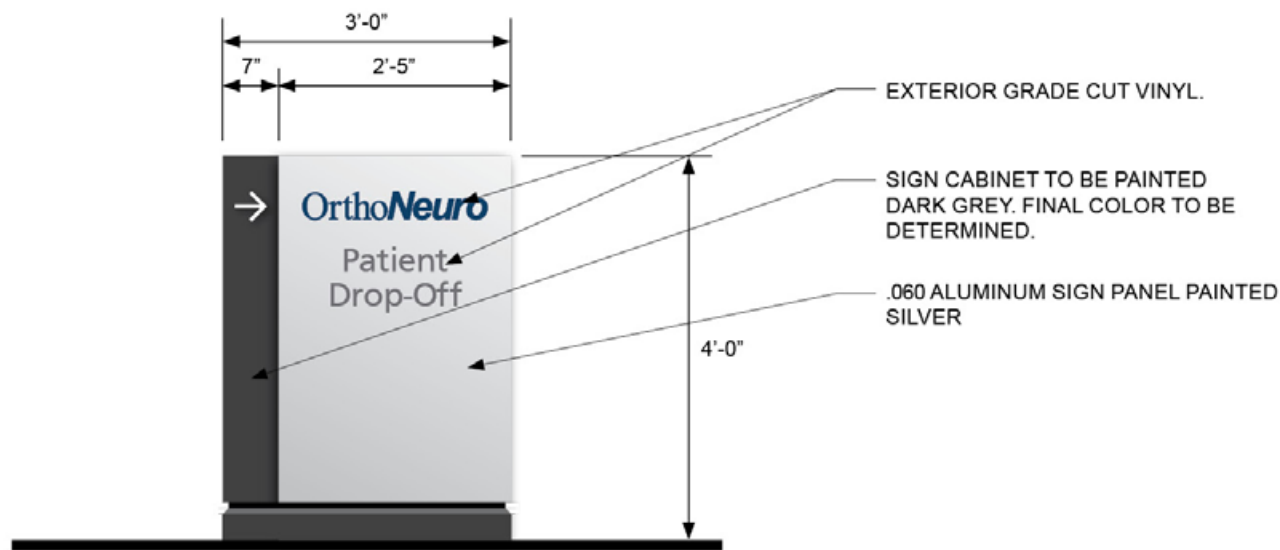
4 EX3 - VINYL DETAILS - SIDE B
SCALE: 1 1/2" = 1'-0"



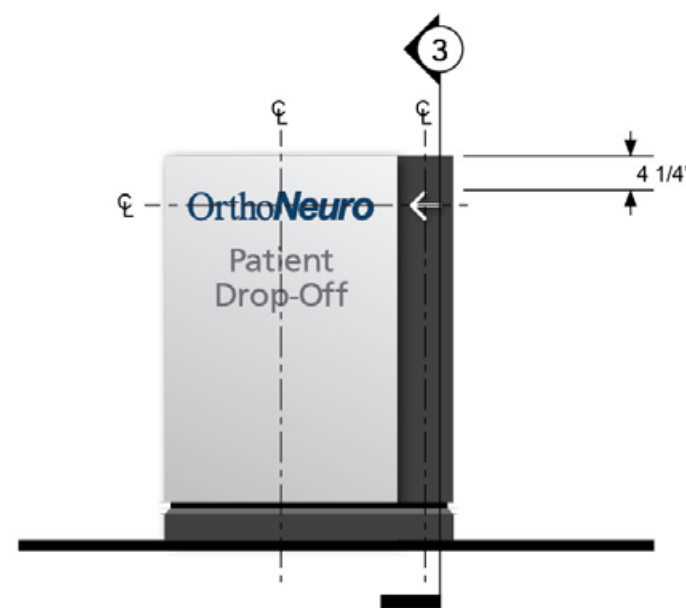
5 EX3 - DETAIL
SCALE: 3" = 1'-0"



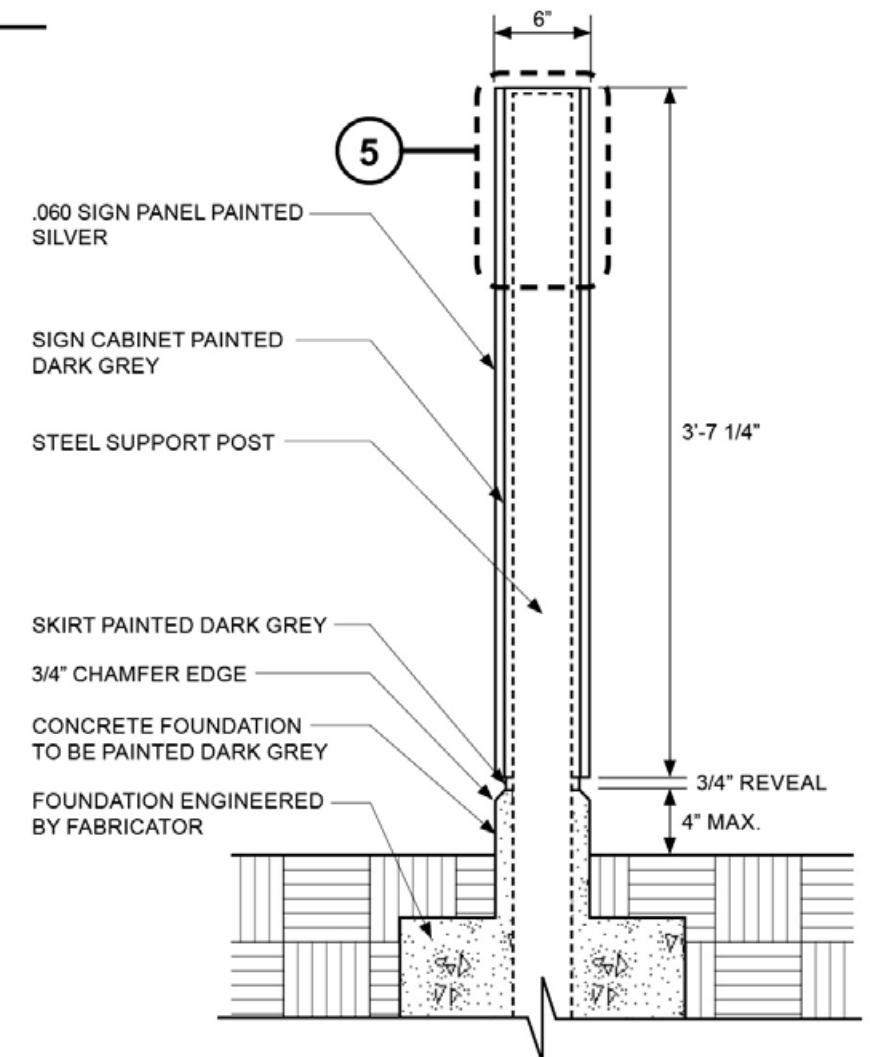
6 EX3 - MULTI-DIRECTIONAL SIGN - SITE VIEW



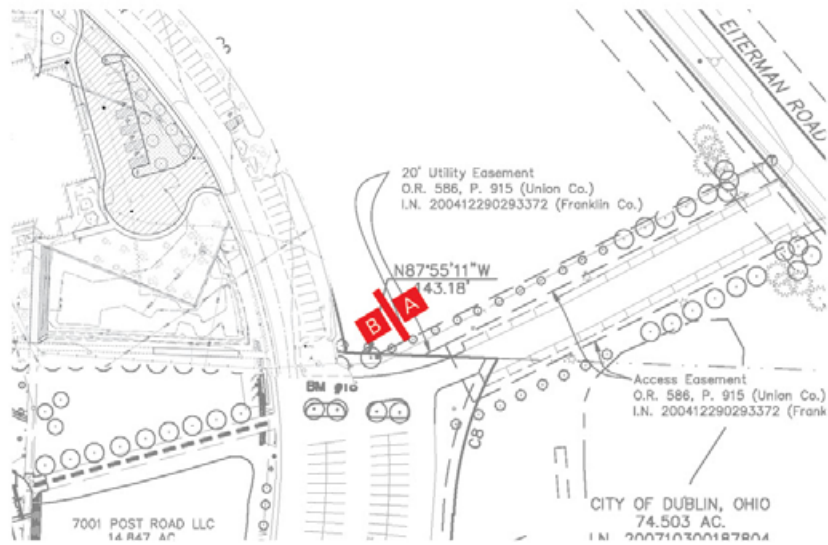
1 EX3 - SINGLE-DIRECTIONAL SIGN - SIDE A
SCALE: 1/2" = 1'-0"



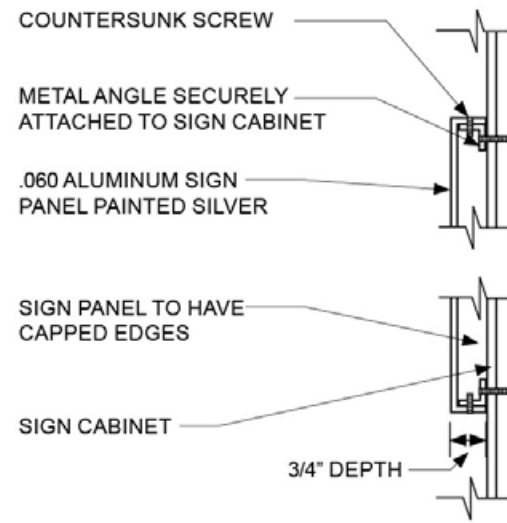
2 EX3 - SINGLE-DIRECTIONAL SIGN - SIDE B
SCALE: 1/2" = 1'-0"



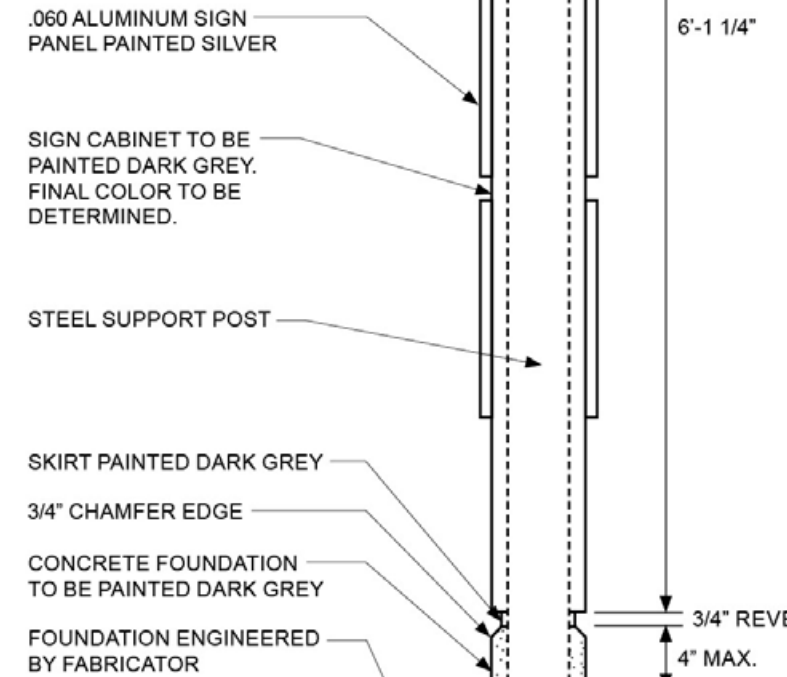
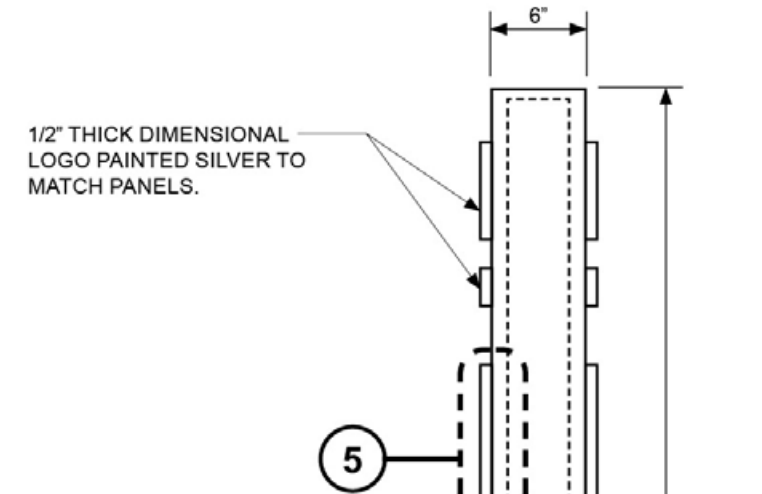
3 EX3 - SECTION
SCALE: 1" = 1'-0"



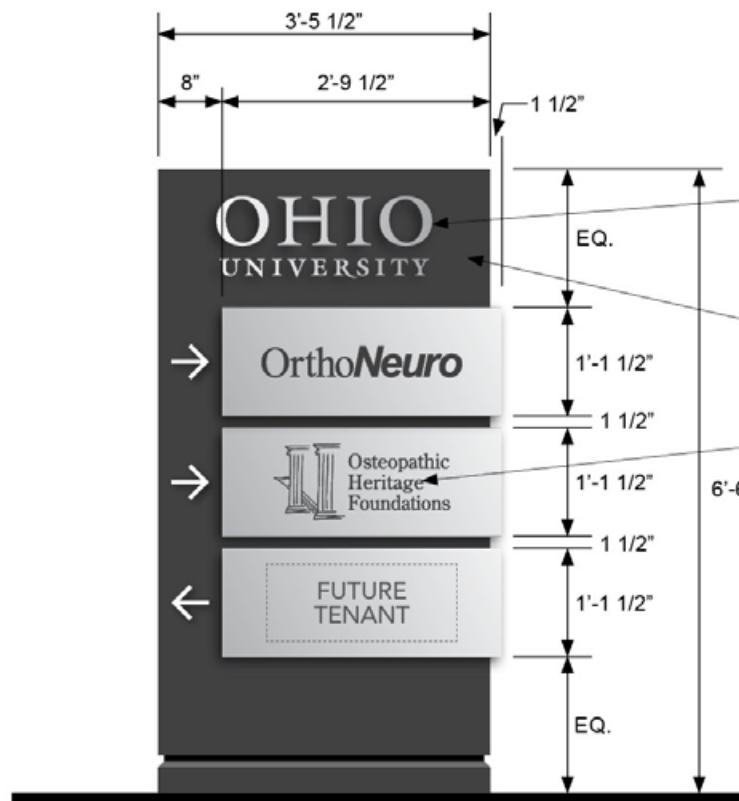
4 EX4 - MULTI-DIRECTIONAL SIGN - SITE VIEW



5 EX4 - SIGN PANEL - DETAIL
SCALE: 3" = 1'-0"

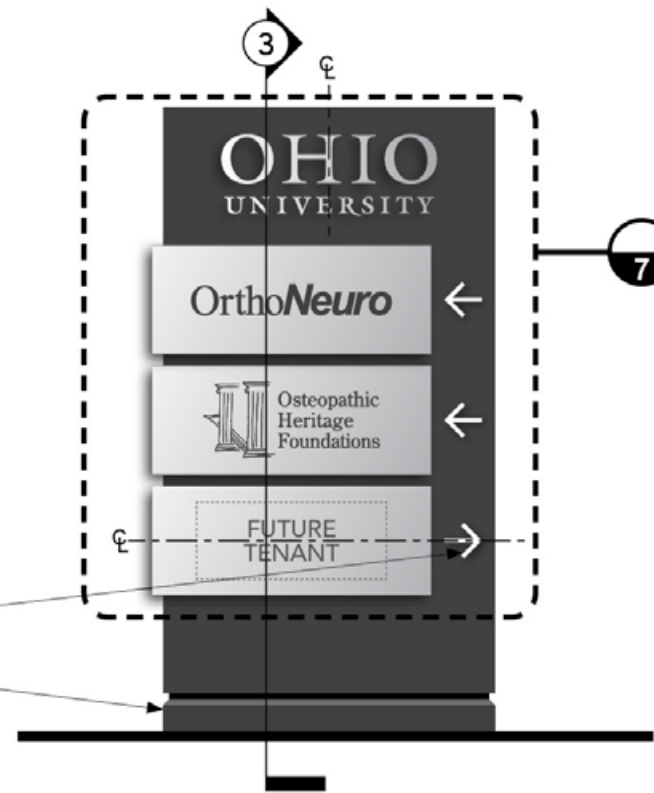


3 EX4 - SECTION
SCALE: 1" = 1'-0"

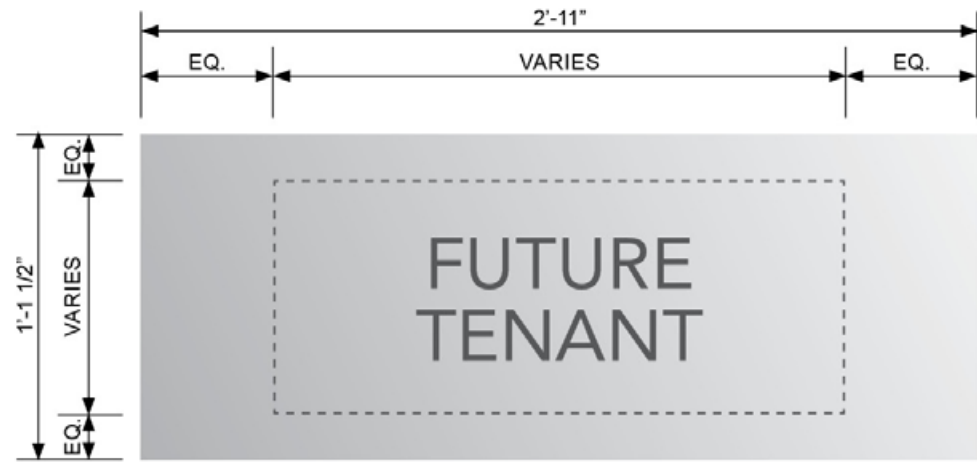


1 EX4 - MULTI-DIRECTIONAL SIGN - SIDE A
SCALE: 1/2" = 1'-0"

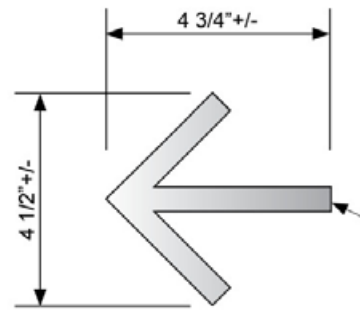
- 1/2" THICK DIMENSIONAL LOGO PAINTED SILVER TO MATCH PANELS.
- SIGN CABINET TO BE PAINTED DARK GREY. FINAL COLOR TO BE DETERMINED.
- .060" ALUMINUM PANELS TO BE PAINTED SILVER. LOGOS TO BE EXTERIOR-GRADE DARK GREY VINYL.
- 'FUTURE TENANT' PANELS TO BE INSTALLED BLANK AND WITHOUT ARROW.
- ARROWS TO BE CENTERED ON PANELS
- FOUNDATION PAINTED TO MATCH DARK GREY SIGN CABINET



2 EX4 - MULTI-DIRECTIONAL SIGN - SIDE B
SCALE: 1/2" = 1'-0"



③ EX2, EX4 - TYPICAL FUTURE SIGN
SCALE: 1 1/2" = 1'-0"



④ EX2, EX4 - TYPICAL ARROW
SCALE: 3" = 1'-0"

1/2" THICK DIMENSIONAL LOGO TO BE PAINTED SILVER TO MATCH SIGN FACES.

TO BE ATTACHED SECURELY. MOUNTING METHOD TO BE DETERMINED.

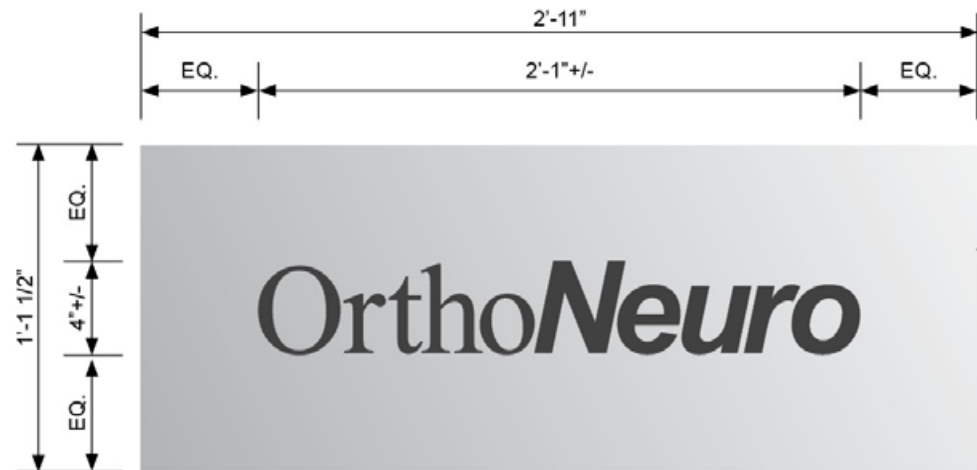
QUANTITY: 2 (2-SIDED SIGN)

FINAL ARTWORK TO BE PROVIDED BY MOODY NOLAN

1/2" THICK DIMENSIONAL ARROW(S) TO BE PAINTED SILVER TO MATCH.

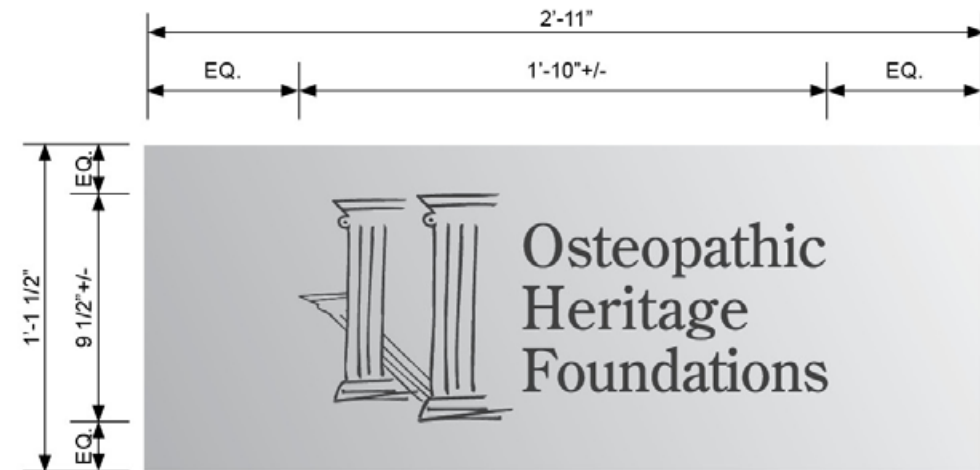


⑤ EX2, EX4 - OHIO UNIVERSITY SIGN
SCALE: 1 1/2" = 1'-0"



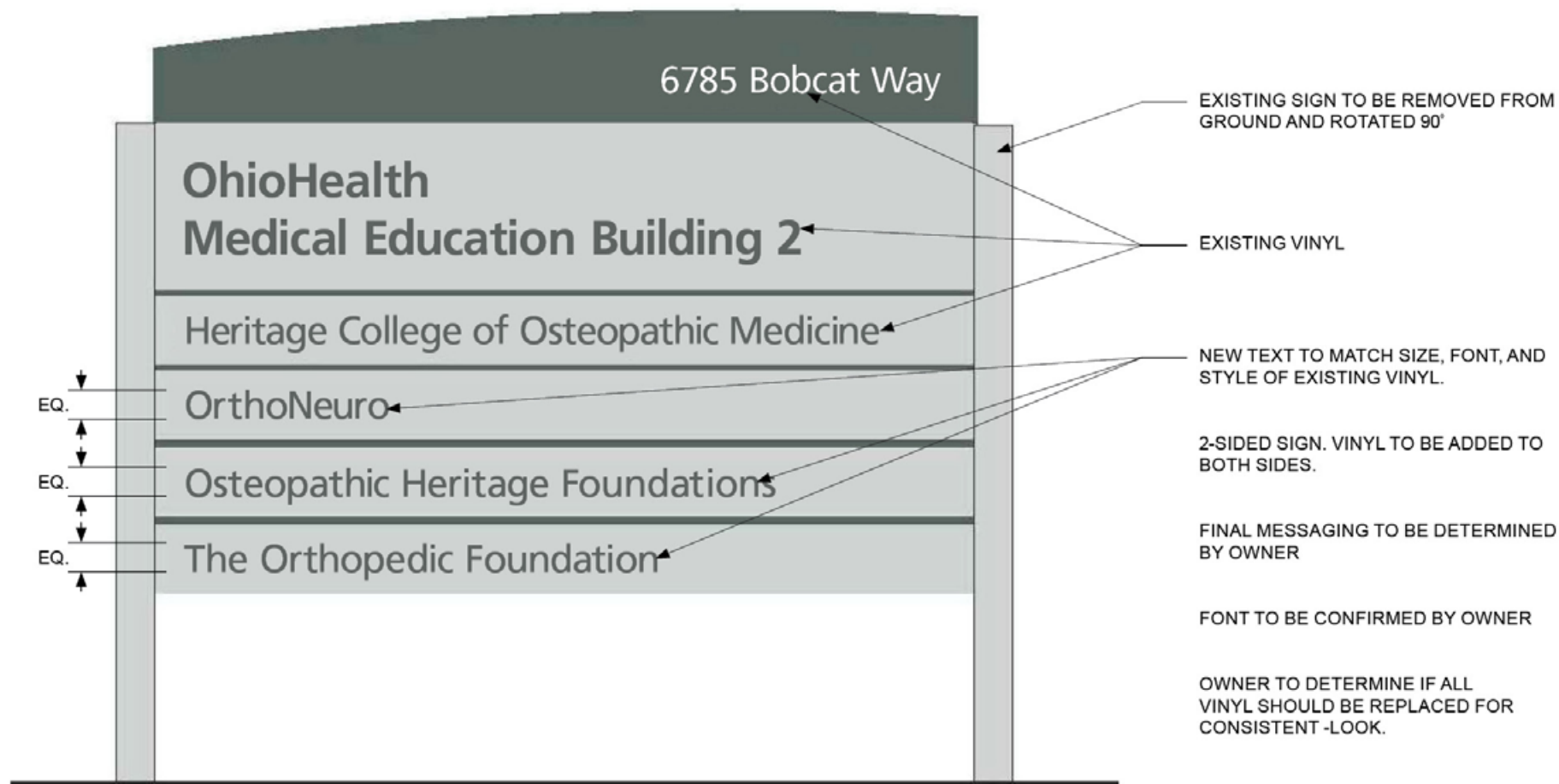
① EX2, EX4 - ORTHONEURO SIGN
SCALE: 1 1/2" = 1'-0"

.060 THICK ALUMINUM PANEL PAINTED SILVER WITH EXTERIOR-GRADE DARK GREY VINYL



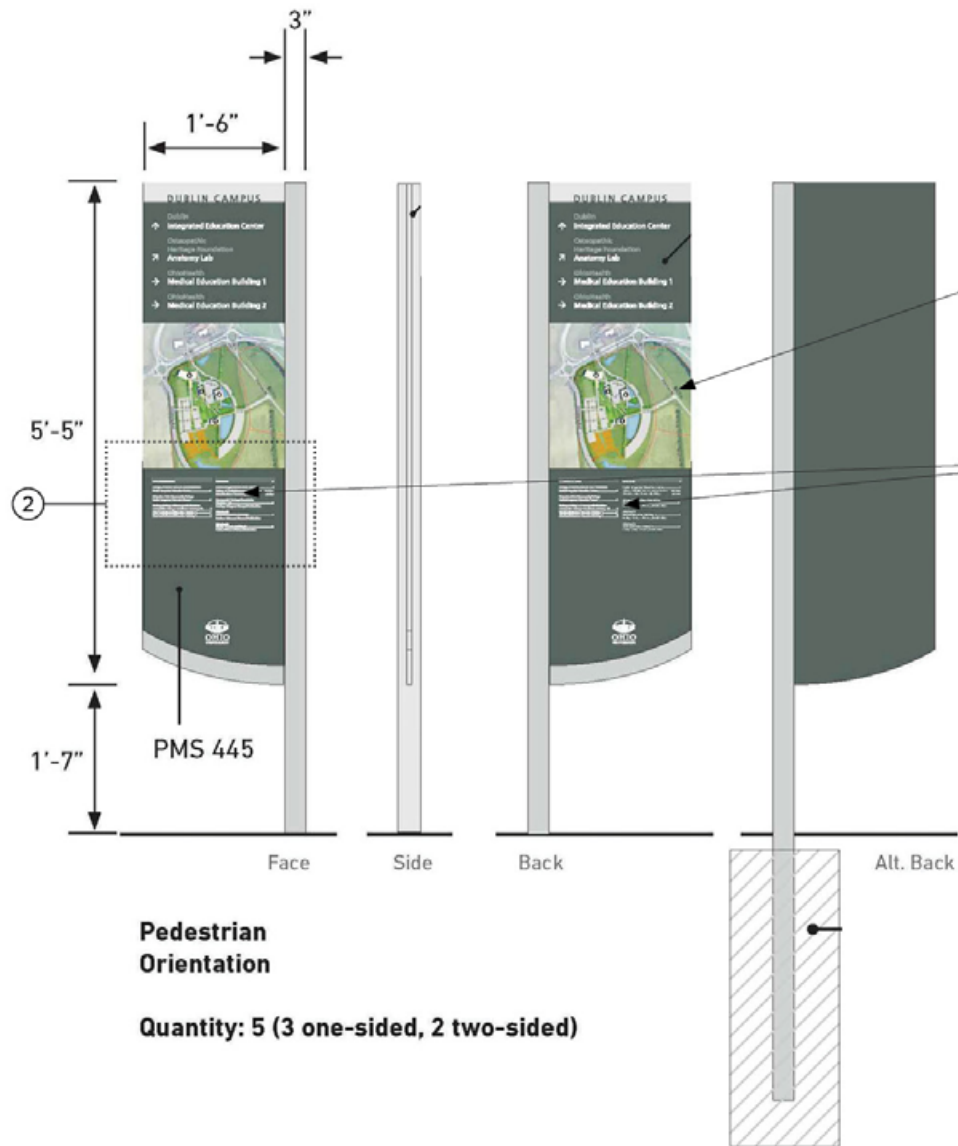
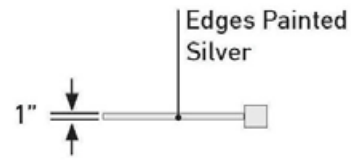
② EX2, EX4 - OSTEOPATHIC SIGN
SCALE: 1 1/2" = 1'-0"

NOTE TO FABRICATOR
 FABRICATOR TO FIELD VERIFY ALL MEASUREMENTS, WALLS,
 AND CONDITIONS BEFORE PRODUCTION AND INSTALLATION. ANY
 DISCREPANCIES BETWEEN DRAWINGS AND FIELD CONDITIONS TO BE
 REPORTED TO ARCHITECT TO DETERMINE SOLUTION.



① EX5 - BUILDING SIGN
 SCALE: 1" = 1'-0"

② EX5 - EXISTING PHOTOS



NEW TEXT TO MATCH SIZE, FONT, AND STYLE OF EXISTING VINYL

FINAL MESSAGING TO BE DETERMINED BY OWNER

Osteopathic Heritage Foundations 2nd Floor
 The Orthopedic Foundation 2nd Floor
 OrthoNeuro 3rd Floor

3 EX6 -PEDESTRIAN SIGN TEXT DETAIL

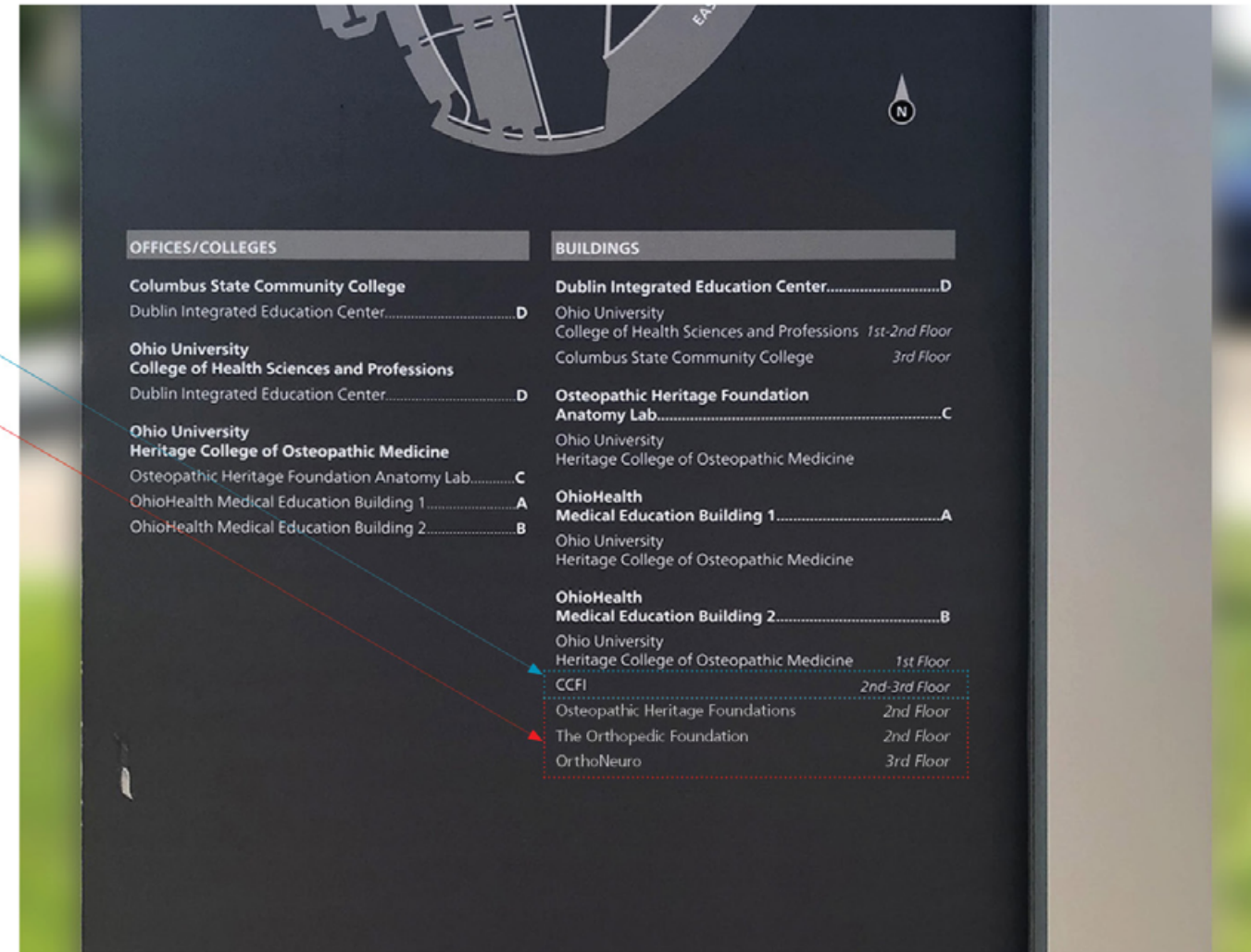
EXISTING SIGN

PREVIOUS TENANT VINYL TO BE REMOVED BY FABRICATOR

NEW TEXT TO MATCH SIZE, FONT, AND STYLE OF EXISTING VINYL

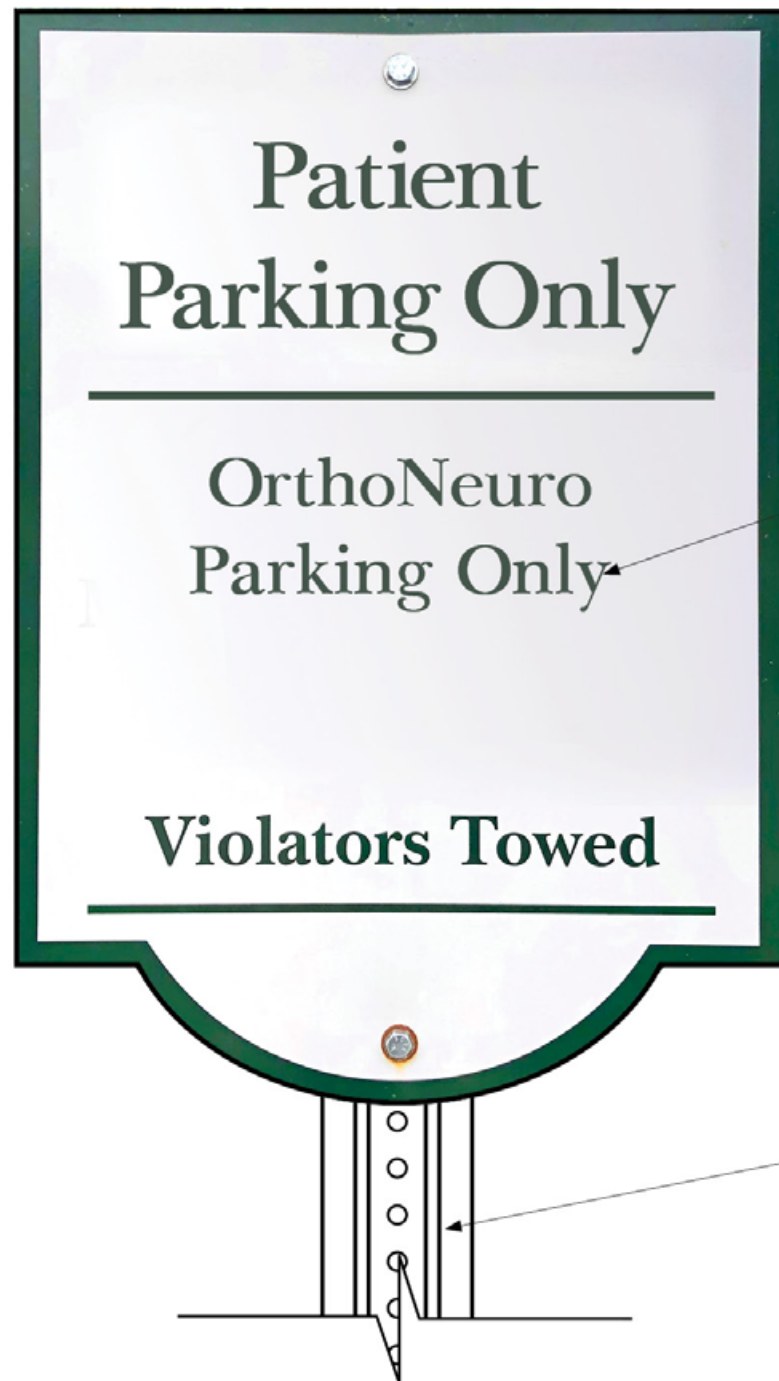
FINAL MESSAGING TO BE DETERMINED BY OWNER

QUANTITY: 5 (3 ONE-SIDED, 2 TWO-SIDED)



2 EX6 -PEDESTRIAN SIGN DETAIL

1 EX6 -PEDESTRIAN SIGN
 SCALE: 1/2" = 1'-0"



SIGN TO MATCH SIZE AND STYLE OF EXISTING RESTRICTED PARKING SIGNAGE.
FINAL MESSAGING TO BE DETERMINED BY OWNER.

U-CHANNEL POST - GREEN ENAMEL AND GALVANIZED.
SIGN POST TO MATCH EXISTING CAMPUS COLOR.
OVERALL HEIGHT TO MATCH EXISTING CAMPUS SIGN POSTS. (6' OR 8').

1 EX7 - PATIENT PARKING SIGN
SCALE: 3" = 1'-0"



2 EX7 - EXISTING CAMPUS PARKING SIGN PHOTOS



1 EX8 - PATIENT PARKING ROW SIGN
SCALE: 3" = 1'-0"



3 EX8 - EXISTING CAMPUS PARKING SIGN PHOTOS



2 EX8 - EXAMPLE SIGN