

**ELECTRICAL INFORMATION:**  
SIGN LOAD = 4 AMPS.  
PRIMARY WIRING IS 120VOLT / 20AMP 12/12 WIRE FROM CIRCUIT IN ELECTRICAL PANEL.

ELECTRICAL NOTE—ACTUAL # OF CIRCUITS TO BE DETERMINED BY A LICENSED ELECTRICAL CONTRACTOR.

TOTAL AMPS: 1.1

# OF CKTS: 1 @ 20 AMP(RECOMMENDED)

VOLTS: 120

ELECTRICAL CONNECTION AS FOLLOWS:

GREEN TO GREEN (GROUND), WHITE TO WHITE (NEUTRAL), BLACK TO BLACK (POWER)

THIS SIGN IS INTENDED TO BE INSTALLED IN ACCORDANCE WITH THE REQUIREMENTS OF ARTICLE 600 OF THE NEC 2017 CODE AND/OR OTHER APPLICABLE LOCAL CODES. THIS INCLUDES PROPER GROUNDING AND BONDING OF SIGN.

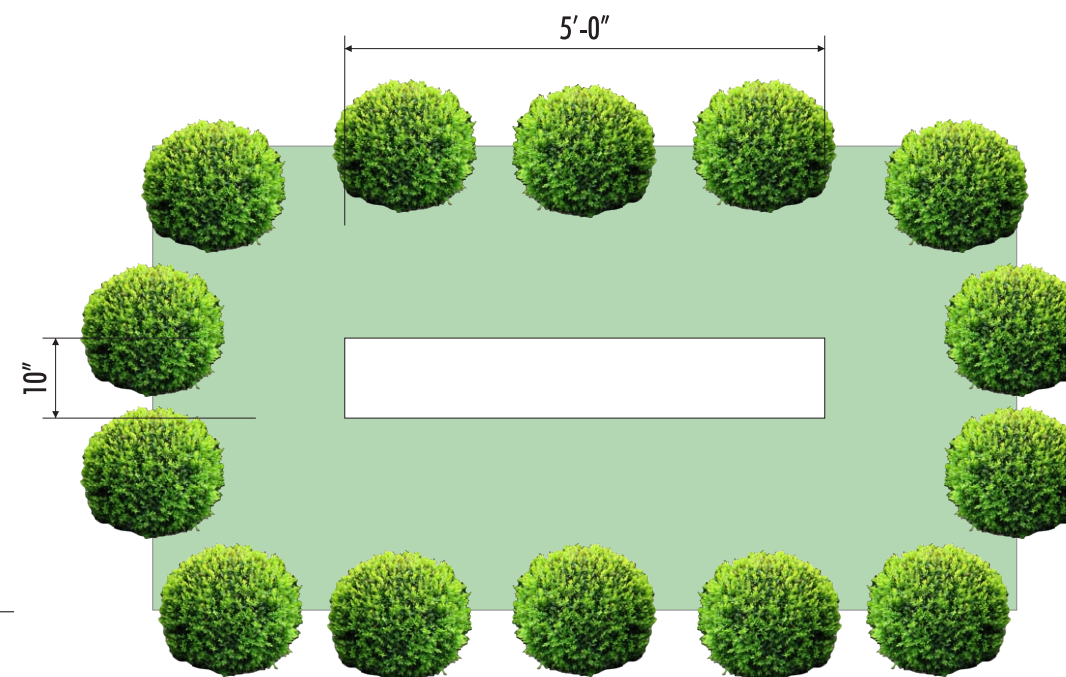
THE LOCATION OF DISCONNECT SWITCH AFTER INSTALLATION SHALL COMPLY WITH ARTICLE 600.6(A)(1) OF THE NEC 2017 CODE.

ALL SIGNAGE WILL BE (U.L.) LISTED, (U.L.) 2161 COMPLIANT AND CARRY (U.L.) LABELS.

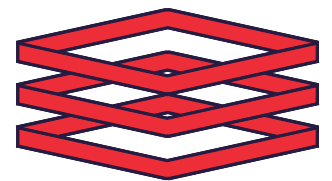
AUGURED FOUNDATION:  
3'-0"Ø x 3'-9" DP  
TOTAL= .98 CU.YDS.

CUBED FOUNDATION:  
3'-4"SQ X 3'-4" DP  
TOTAL= 1.27 CU. YDS.

**\*NOTE:**  
INSTALL TOGGLE SWITCH TO OPERATE (ON/OFF) IN THE HORIZONTAL POSITION.



**LANDSCAPE PLAN**



**ENTERA**  
Your total branding solution

5900 VENTURE CROSSINGS BLVD

PANAMA CITY, FL 32409

PH: 850-763-7982

FAX: 850-392-0673

www.enterabrading.com

THIS DOCUMENT CONTAINS PROPRIETARY AND CONFIDENTIAL INFORMATION OF ENTERA, LLC. AND SHALL NOT BE USED, DISCLOSED OR REPRODUCED, IN WHOLE OR IN PART, FOR ANY PURPOSE OTHER THAN TO EVALUATE THIS DOCUMENT, WITHOUT THE PRIOR WRITTEN CONSENT OF ENTERA, LLC. TITLE IN AND TO THIS DOCUMENT AND ALL INFORMATION CONTAINED HEREIN REMAINS AT ALL TIMES PROPERTY OF ENTERA, LLC.

**COLOR NOTES:**

A	CABINET/FACE: .090" ALUM ROUTED PAINTED MATHEWS MAP-LVS929 CARBON BLACK SATIN FINISH
B	INTERIOR: PAINT REFLECTIVE WHITE
C	POLE COVER FINISH: PAINT PANTONE COOL GRAY 11 C, SATIN FINISH

**REVISION:**

1

**DESIGNER**

KEVIN LOVELESS

**DRAWING NUMBER**

TPS111

**CLIENT:**

TOWNEPLACE SUITES

**SCALE:**

1:20

**DATE:**

8/28/2020

**PAGE NUMBER:**

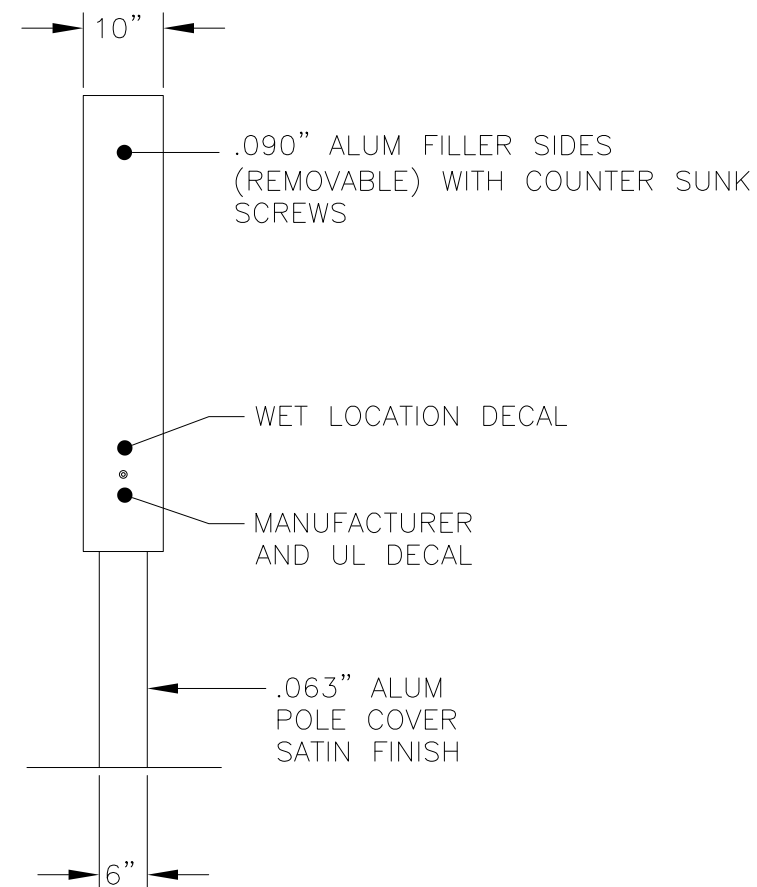
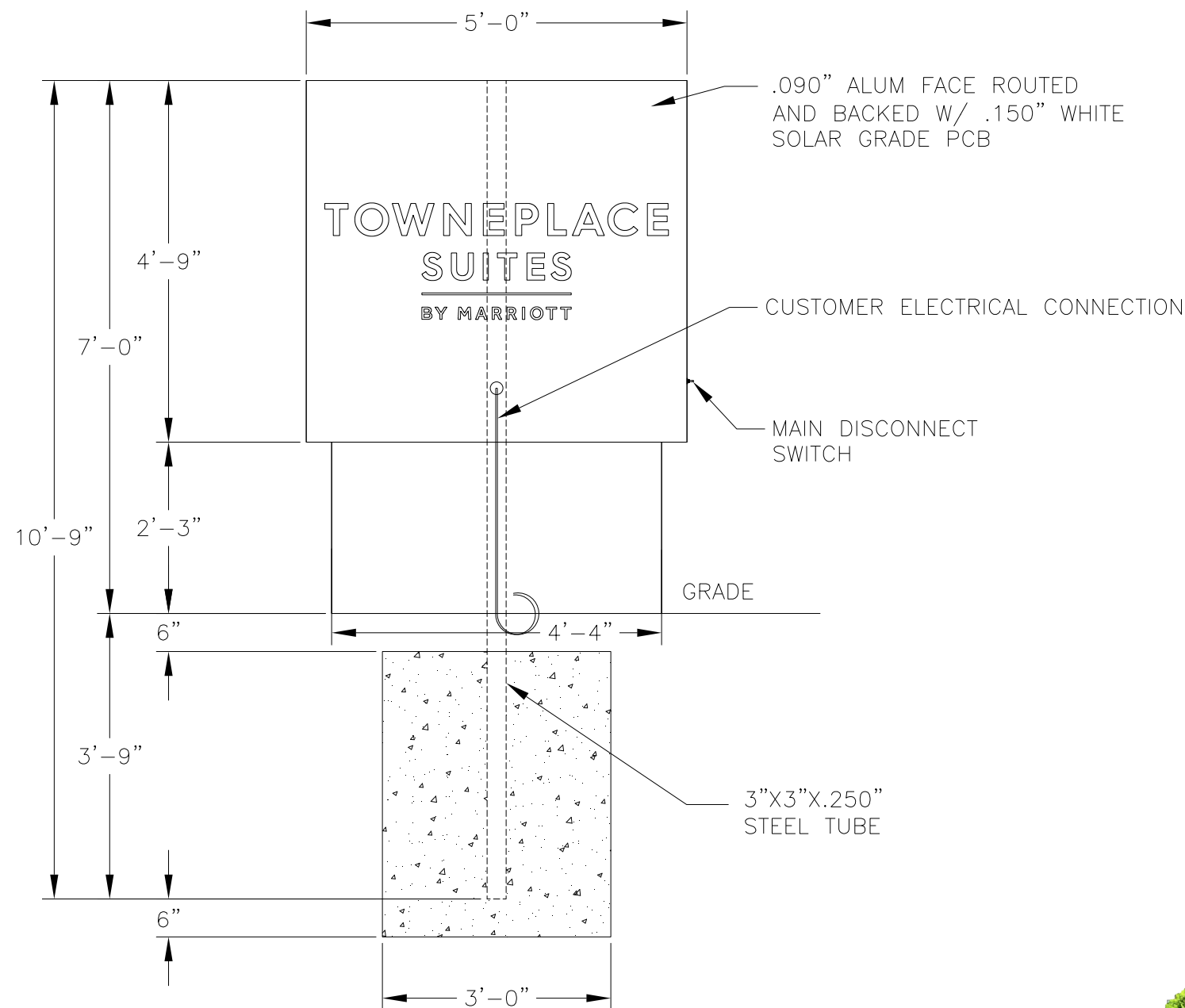
1 OF 5

**PAGE TYPE:**

PRESENTATION



DEPARTMENT: DESIGN



**ELECTRICAL INFORMATION:**  
SIGN LOAD = 4 AMPS.  
PRIMARY WIRING IS 120VOLT / 20AMP 12/12 WIRE FROM CIRCUIT IN ELECTRICAL PANEL.

ELECTRICAL NOTE—ACTUAL # OF CIRCUITS TO BE DETERMINED BY A LICENSED ELECTRICAL CONTRACTOR.

TOTAL AMPS: 1.1

# OF CKTS: 1 @ 20 AMP(RECOMMENDED)

VOLTS: 120

ELECTRICAL CONNECTION AS FOLLOWS:

GREEN TO GREEN (GROUND), WHITE TO WHITE (NEUTRAL), BLACK TO BLACK (POWER)

THIS SIGN IS INTENDED TO BE INSTALLED IN ACCORDANCE WITH THE REQUIREMENTS OF ARTICLE 600 OF THE NEC 2017 CODE AND/OR OTHER APPLICABLE LOCAL CODES. THIS INCLUDES PROPER GROUNDING AND BONDING OF SIGN.

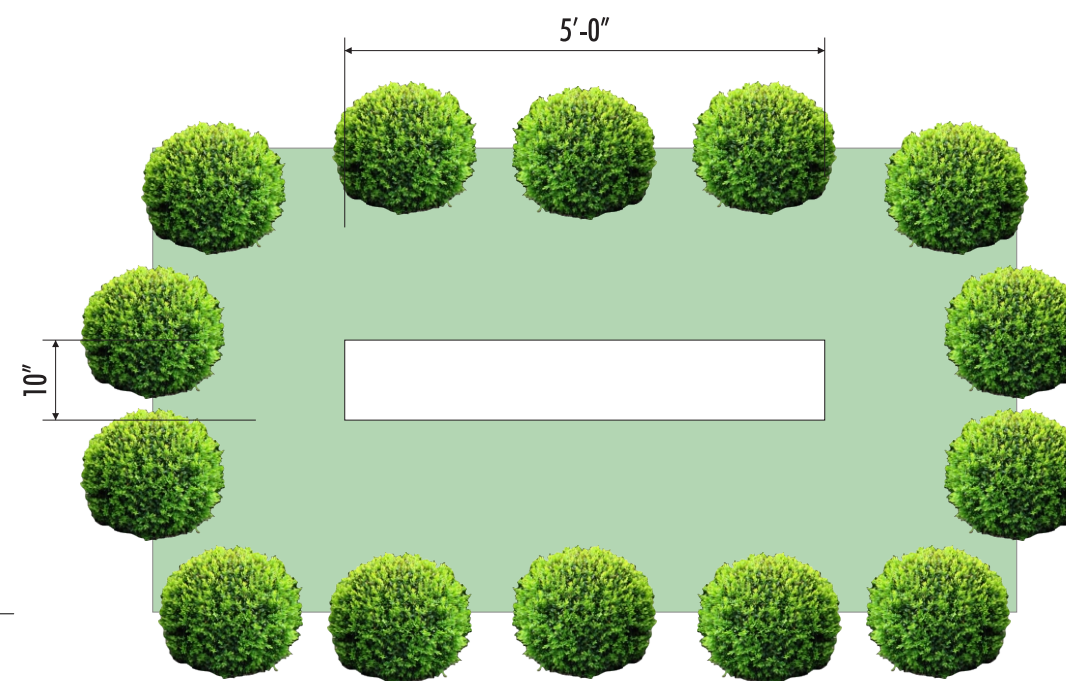
THE LOCATION OF DISCONNECT SWITCH AFTER INSTALLATION SHALL COMPLY WITH ARTICLE 600.6(A)(1) OF THE NEC 2017 CODE.

ALL SIGNAGE WILL BE (U.L.) LISTED, (U.L.) 2161 COMPLIANT AND CARRY (U.L.) LABELS.

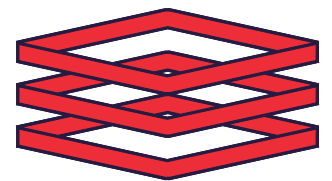
AUGURED FOUNDATION:  
3'-0"Ø x 3'-9" DP  
TOTAL= .98 CU.YDS.

CUBED FOUNDATION:  
3'-4"SQ X 3'-4" DP  
TOTAL= 1.27 CU. YDS.

**\*NOTE:**  
INSTALL TOGGLE SWITCH TO OPERATE (ON/OFF) IN THE HORIZONTAL POSITION.



**LANDSCAPE PLAN**



**ENTERA**  
Your total branding solution

5900 VENTURE CROSSINGS BLVD

PANAMA CITY, FL 32409

PH: 850-763-7982

FAX: 850-392-0673

www.enterabrading.com

THIS DOCUMENT CONTAINS PROPRIETARY AND CONFIDENTIAL INFORMATION OF ENTERA, LLC. AND SHALL NOT BE USED, DISCLOSED OR REPRODUCED, IN WHOLE OR IN PART, FOR ANY PURPOSE OTHER THAN TO EVALUATE THIS DOCUMENT, WITHOUT THE PRIOR WRITTEN CONSENT OF ENTERA, LLC. TITLE IN AND TO THIS DOCUMENT AND ALL INFORMATION CONTAINED HEREIN REMAINS AT ALL TIMES PROPERTY OF ENTERA, LLC.

**COLOR NOTES:**

A	CABINET/FACE: .090" ALUM ROUTED PAINTED MATHEWS MAP-LVS929 CARBON BLACK SATIN FINISH
B	INTERIOR: PAINT REFLECTIVE WHITE
C	POLE COVER FINISH: PAINT PANTONE COOL GRAY 11 C, SATIN FINISH

**REVISION:**

1

**DESIGNER**

KEVIN LOVELESS

**DRAWING NUMBER**

TPS111

**CLIENT:**

TOWNEPLACE SUITES

**SCALE:**

1:20

**DATE:**

8/28/2020

**PAGE NUMBER:**

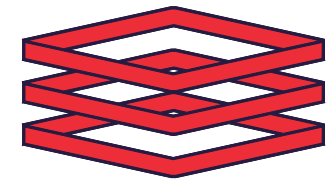
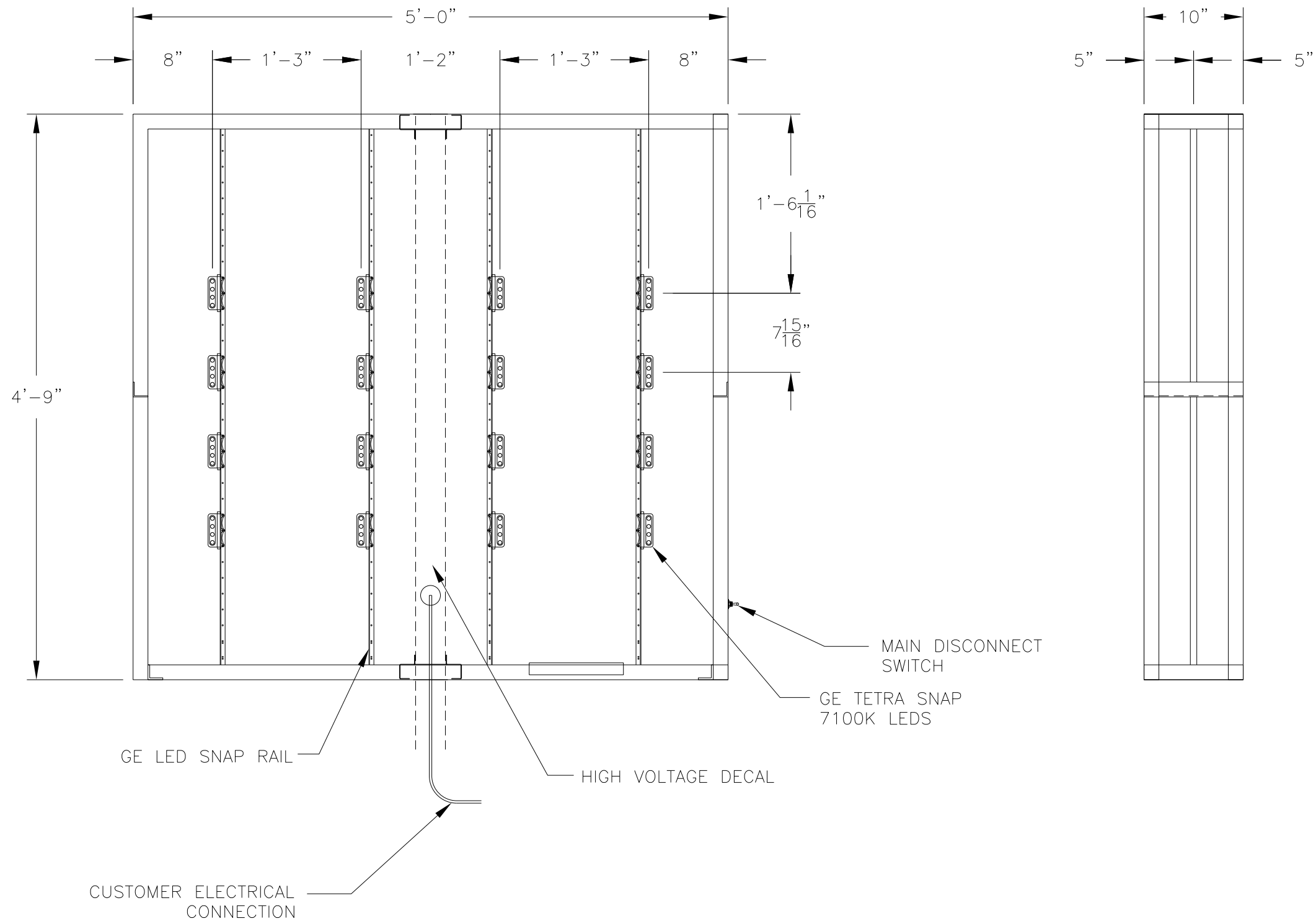
1 OF 5

**PAGE TYPE:**

PRESENTATION



DEPARTMENT: DESIGN



**ENTERA**

Your total branding solution

5900 VENTURE CROSSINGS BLVD

PANAMA CITY, FL 32409

PH: 850-763-7982

FAX: 850-392-0673

[www.enterabranding.com](http://www.enterabranding.com)

THIS DOCUMENT CONTAINS PROPRIETARY AND CONFIDENTIAL INFORMATION OF ENTERA, LLC, AND SHALL NOT BE USED, DISCLOSED OR REPRODUCED, IN WHOLE OR IN PART, FOR ANY PURPOSE OTHER THAN TO EVALUATE THIS DOCUMENT, WITHOUT THE PRIOR WRITTEN CONSENT OF ENTERA, LLC. TITLE IN AND TO THIS DOCUMENT AND ALL INFORMATION CONTAINED HEREIN REMAINS AT ALL TIMES PROPERTY OF ENTERA, LLC.

COLOR NOTES:

REVISION:

1

DESIGNER

KEVIN LOVELESS

DRAWING NUMBER

TPS111

CLIENT:

TOWNPLACE SUITES

SCALE:

1:10

DATE:

8/28/2020

PAGE NUMBER:

2 OF 5

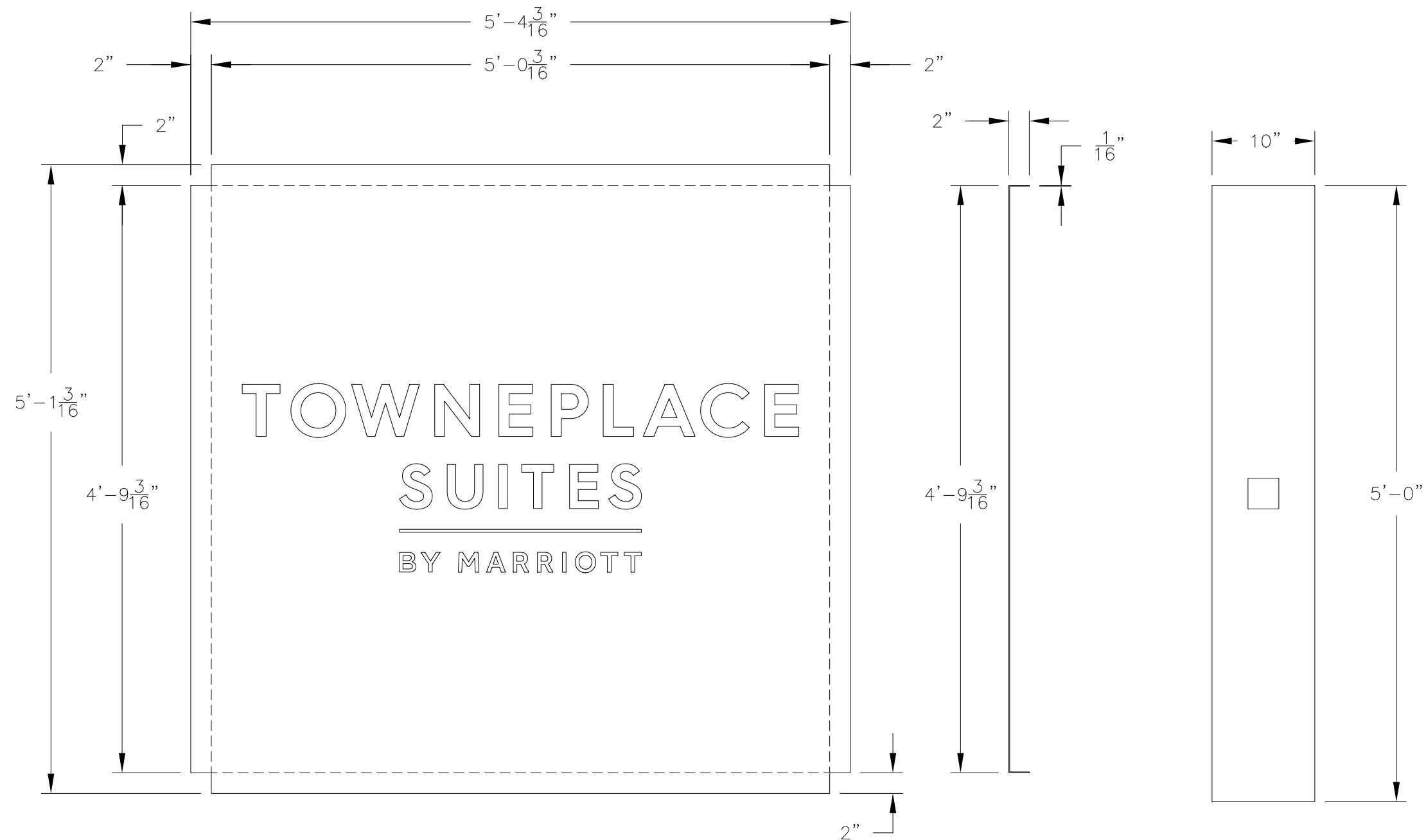
PAGE TYPE:

ELECTRICAL



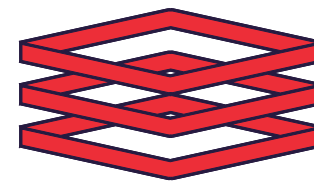
Underwriters  
Laboratories, Inc.  
LISTED

DEPARTMENT:  
DESIGN



CABINET FACE  
.090" ALUM  
(2) REQ'D

BOTTOM COVER  
.090" ALUM  
(1) REQUIRED



**ENTERA**

Your total branding solution

5900 VENTURE CROSSINGS BLVD

PANAMA CITY, FL 32409

PH: 850-763-7982

FAX: 850-392-0673

www.enterabranding.com

THIS DOCUMENT CONTAINS PROPRIETARY AND  
CONFIDENTIAL INFORMATION OF ENTERA, LLC, AND  
SHALL NOT BE USED, DISCLOSED OR REPRODUCED,  
IN WHOLE OR IN PART, FOR ANY PURPOSE OTHER  
THAN TO EVALUATE THIS DOCUMENT, WITHOUT THE  
PRIOR WRITTEN CONSENT OF ENTERA, LLC. TITLE IN  
AND TO THIS DOCUMENT AND ALL INFORMATION  
CONTAINED HEREIN REMAINS AT ALL TIMES  
PROPERTY OF ENTERA, LLC.

COLOR NOTES:

REVISION:

1

DESIGNER

KEVIN LOVELESS

DRAWING NUMBER

TPS111

CLIENT:

TOWNEPLACE SUITES

SCALE:

1:10

DATE:

8/28/2020

PAGE NUMBER:

3 OF 5

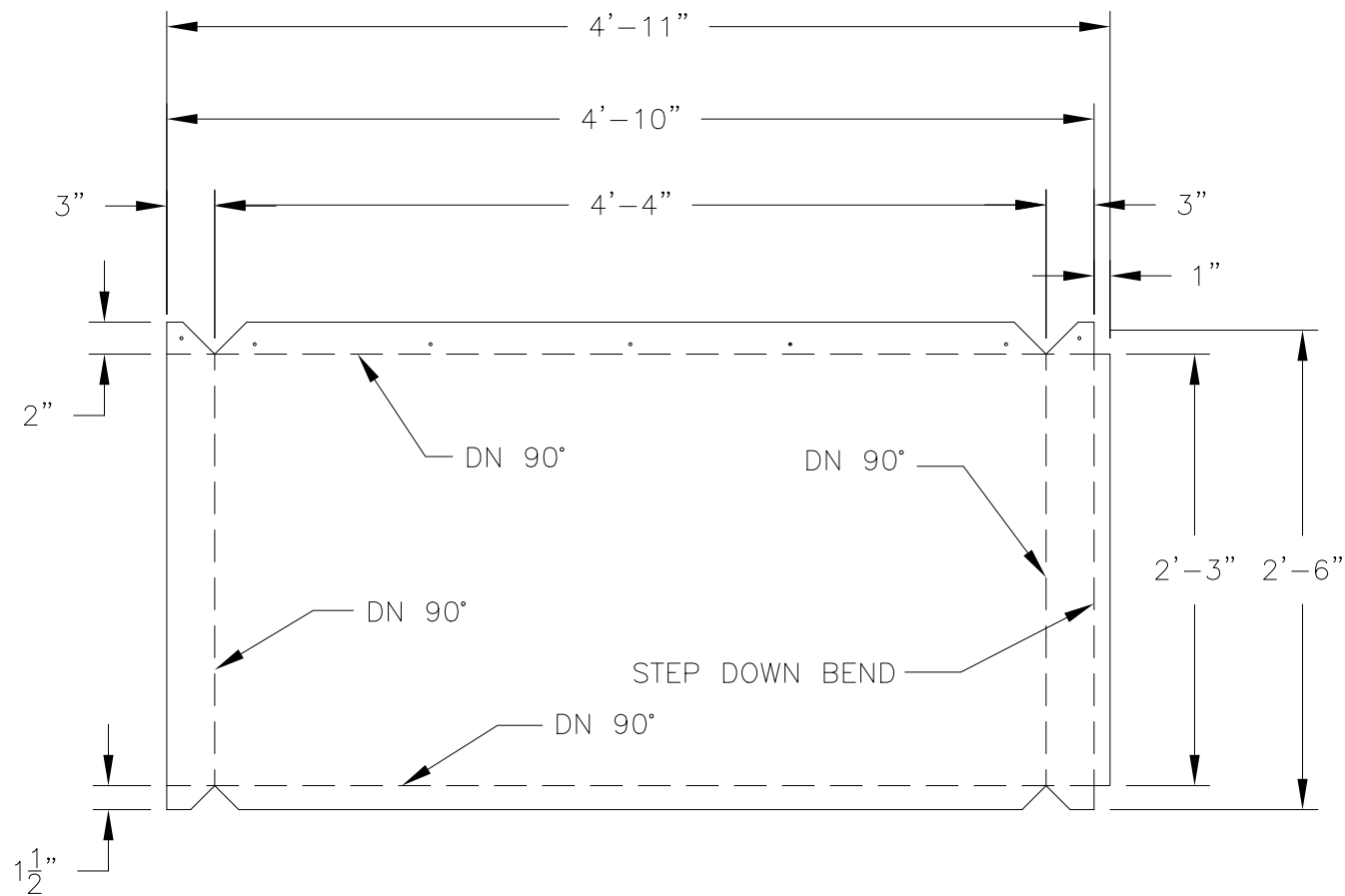
PAGE TYPE:

BEND SHEET

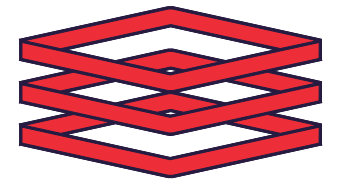


Underwriters  
Laboratories, Inc. LISTED

DEPARTMENT:  
DESIGN



POLE COVER FLAT LAYOUT  
.063 ALUM  
(2) REQ'D



**ENTERA**

Your total branding solution

5900 VENTURE CROSSINGS BLVD

PANAMA CITY, FL 32409

PH: 850-763-7982

FAX: 850-392-0673

www.enterabranding.com

THIS DOCUMENT CONTAINS PROPRIETARY AND  
CONFIDENTIAL INFORMATION OF ENTERA, LLC, AND  
SHALL NOT BE USED, DISCLOSED OR REPRODUCED,  
IN WHOLE OR IN PART, FOR ANY PURPOSE OTHER  
THAN TO EVALUATE THIS DOCUMENT, WITHOUT THE  
PRIOR WRITTEN CONSENT OF ENTERA, LLC. TITLE IN  
AND TO THIS DOCUMENT AND ALL INFORMATION  
CONTAINED HEREIN REMAINS AT ALL TIMES  
PROPERTY OF ENTERA, LLC.

COLOR NOTES:

REVISION:

1

DESIGNER

KEVIN LOVELESS

DRAWING NUMBER

TPS111

CLIENT:

TOWNPLACE SUITES

SCALE:

1:10

DATE:

8/28/2020

PAGE NUMBER:

4 OF 5

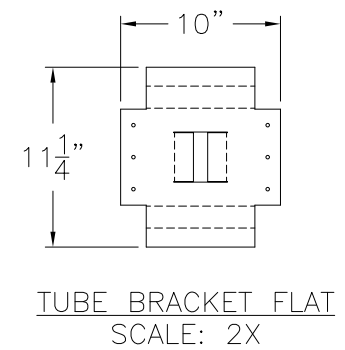
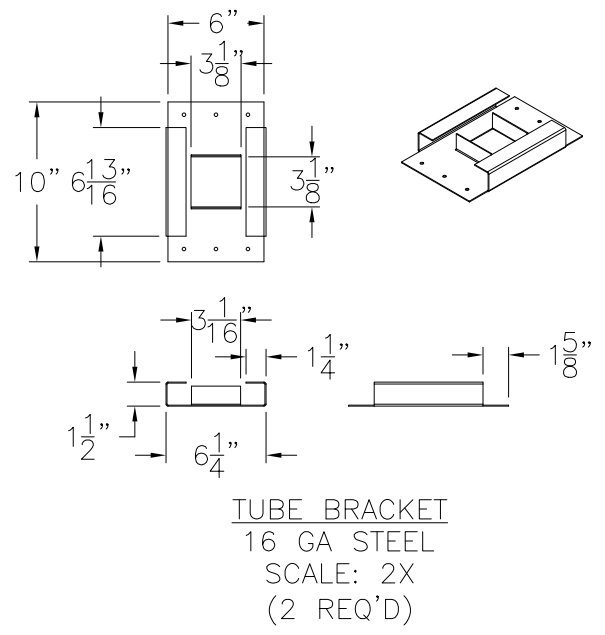
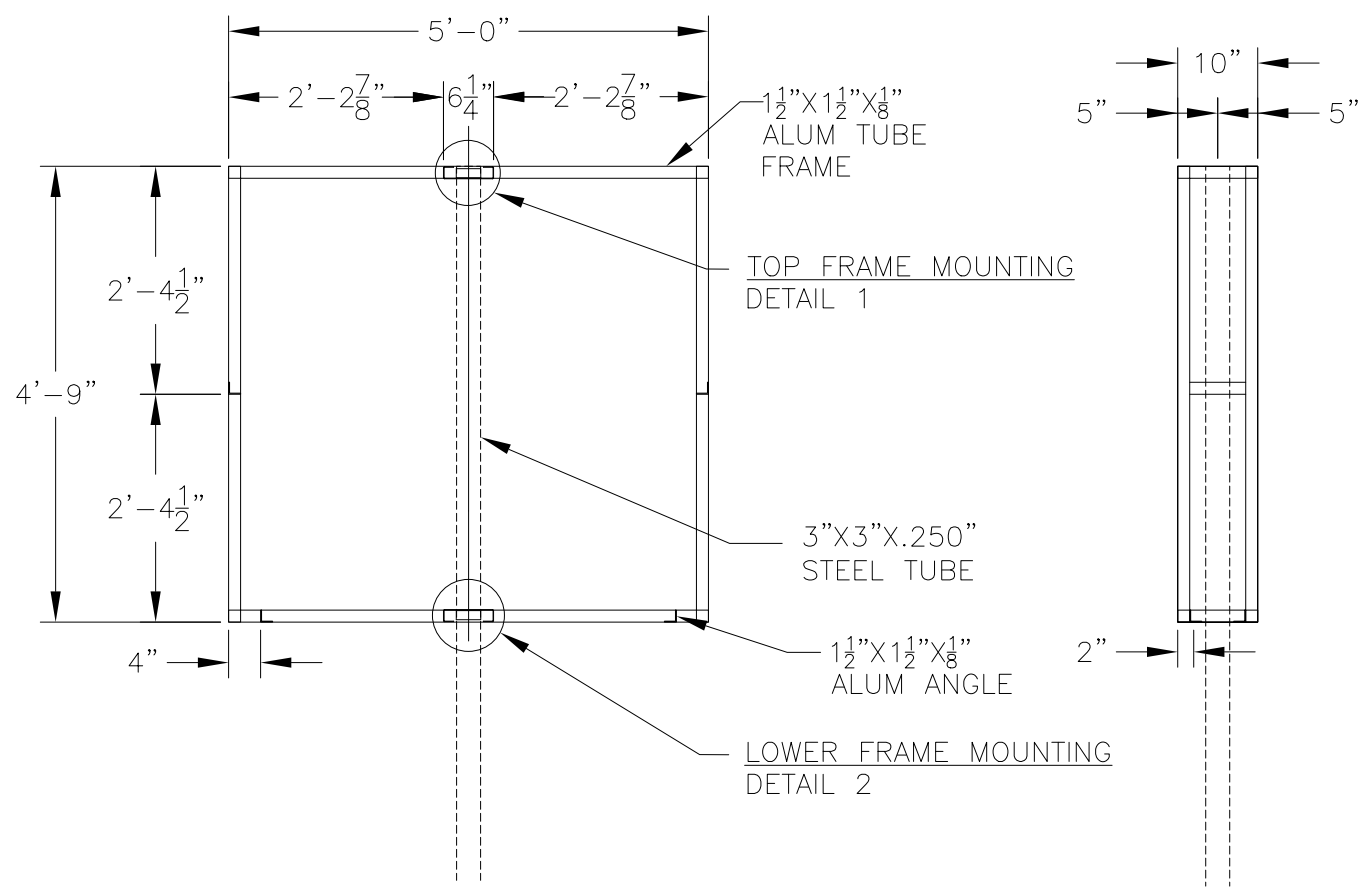
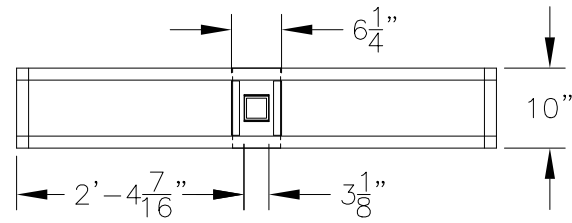
PAGE TYPE:

POLE COVER



Underwriters  
Laboratories, Inc.  
LISTED

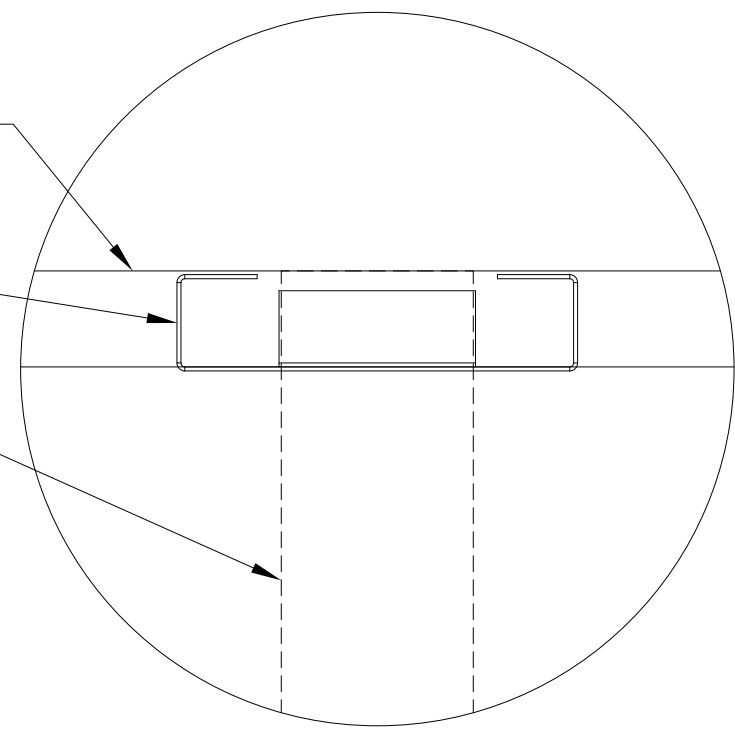
DEPARTMENT:  
DESIGN



1 1/2"X1 1/2"X1/8" ALUM TUBE FRAME

TUBE BRACKET  
16 GA STEEL

3"X3"X.250"  
STEEL TUBE

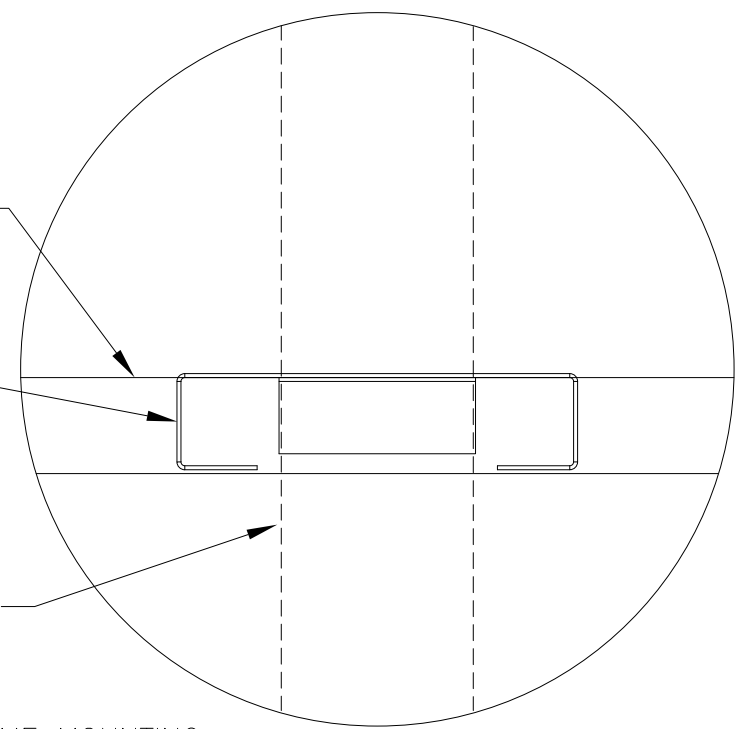


TOP FRAME MOUNTING  
DETAIL 1  
SCALE: NTS

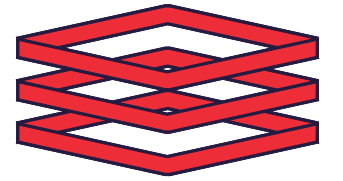
1 1/2"X1 1/2"X1/8" ALUM TUBE FRAME

TUBE BRACKET  
16 GA STEEL

3"X3"X.250"  
STEEL TUBE



LOWER FRAME MOUNTING  
DETAIL 2  
SCALE: NTS



**ENTERA**

Your total branding solution

5900 VENTURE CROSSINGS BLVD

PANAMA CITY, FL 32409

PH: 850-763-7982

FAX: 850-392-0673

www.enterabrading.com

THIS DOCUMENT CONTAINS PROPRIETARY AND CONFIDENTIAL INFORMATION OF ENTERA, LLC, AND SHALL NOT BE USED, DISCLOSED OR REPRODUCED, IN WHOLE OR IN PART, FOR ANY PURPOSE OTHER THAN TO EVALUATE THIS DOCUMENT, WITHOUT THE PRIOR WRITTEN CONSENT OF ENTERA, LLC. TITLE IN AND TO THIS DOCUMENT AND ALL INFORMATION CONTAINED HEREIN REMAINS AT ALL TIMES PROPERTY OF ENTERA, LLC.

COLOR NOTES:

REVISION:

1

DESIGNER

KEVIN LOVELESS

DRAWING NUMBER

TPS111

CLIENT:

TOWNPLACE SUITES

SCALE:

1:20

DATE:

8/28/2020

PAGE NUMBER:

5 OF 5

PAGE TYPE:

FRAMING

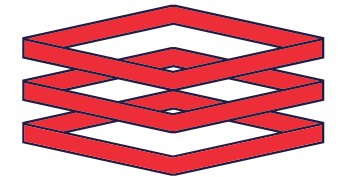
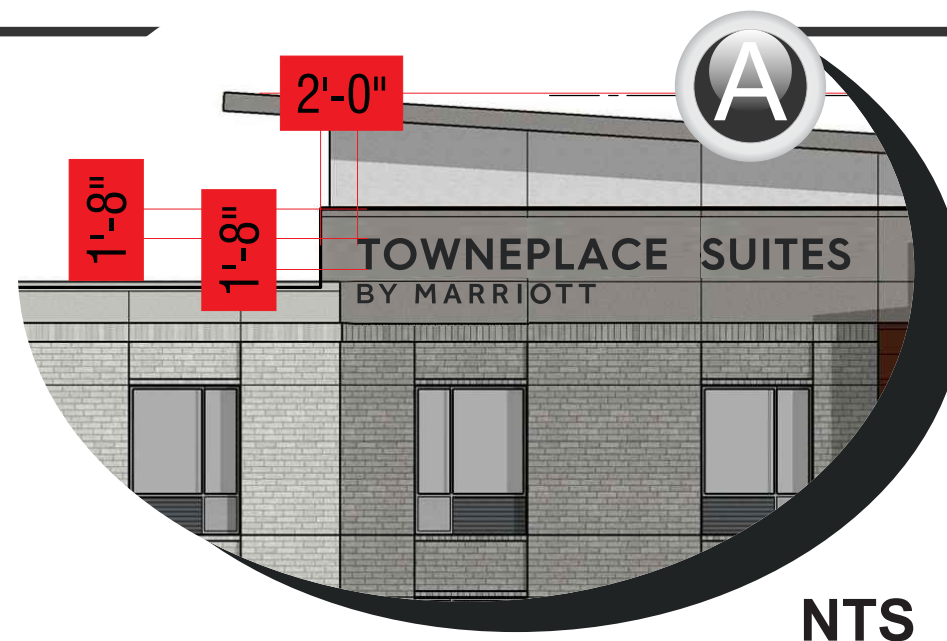


Underwriters  
Laboratories, Inc.  
LISTED

DEPARTMENT  
DESIGN



**TOWNEPLACE  
SUITES**  
BY MARRIOTT

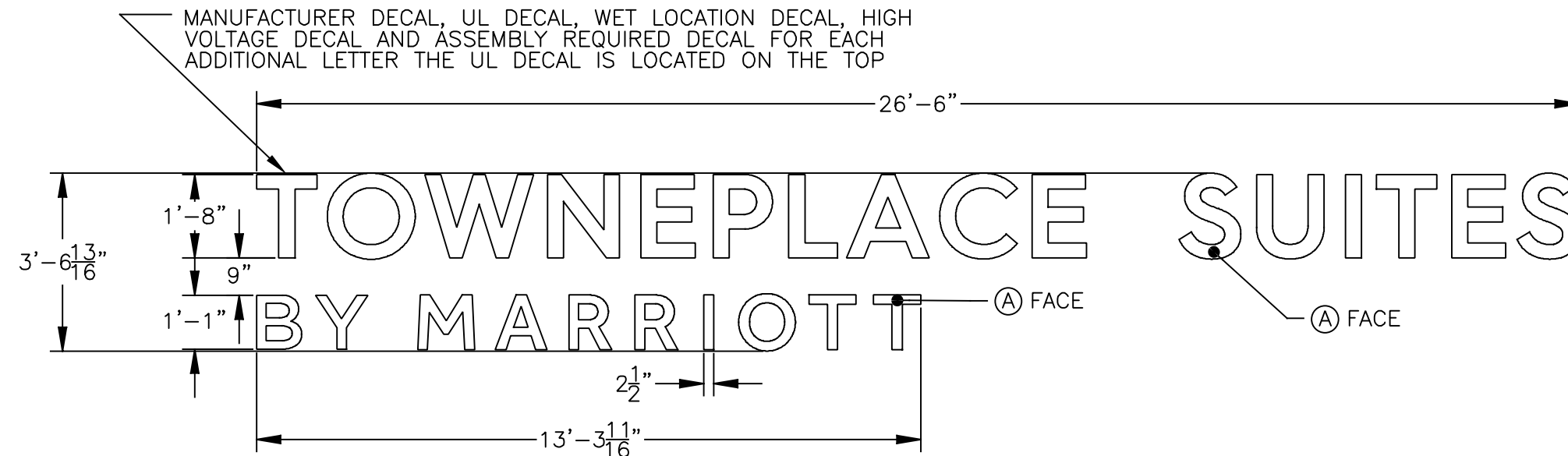
**ENTERA**

THIS DOCUMENT CONTAINS PROPRIETARY AND  
CONFIDENTIAL INFORMATION OF ENTERA, LLC. AND  
SHALL NOT BE USED, DISCLOSED OR REPRODUCED,  
IN WHOLE OR IN PART, FOR ANY PURPOSE OTHER  
THAN TO EVALUATE THIS DOCUMENT, WITHOUT THE  
PRIOR WRITTEN CONSENT OF ENTERA, LLC. TITLE IN  
AND TO THIS DOCUMENT AND ALL INFORMATION  
CONTAINED HEREIN REMAINS AT ALL TIMES  
PROPERTY OF ENTERA, LLC.

H: MARKETING DESIGN / CDR / M / MARRIOTT / TOWNEPLACE SUITES / DUBLIN, OH.cdr



DEPARTMENT:  
ART



ELECTRICAL NOTE—ACTUAL # OF CIRCUITS TO BE DETERMINED BY A LICENSED ELECTRICAL CONTRACTOR.  
TOTAL AMPS: 1.1

# OF CKTS: 1 @ 20 AMP(RECOMMENDED)

VOLTS: 120

ELECTRICAL CONNECTION AS FOLLOWS:

GREEN TO GREEN (GROUND), WHITE TO WHITE (NEUTRAL), BLACK TO BLACK (POWER)

THIS SIGN IS INTENDED TO BE INSTALLED IN ACCORDANCE WITH THE REQUIREMENTS

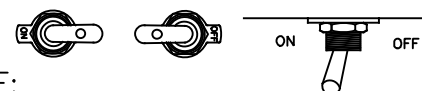
OF ARTICLE 600 OF THE NEC 2017 CODE AND/OR OTHER APPLICABLE LOCAL CODES.

THIS INCLUDES PROPER GROUNDING AND BONDING OF SIGN.

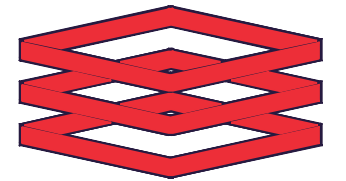
THE LOCATION OF DISCONNECT SWITCH AFTER INSTALLATION SHALL COMPLY WITH

ARTICLE 600.6(A)(1) OF THE NEC 2017 CODE.

ALL SIGNAGE WILL BE (U.L.) LISTED, (U.L.) 2161 COMPLIANT AND CARRY (U.L.) LABELS.



\*NOTE:  
INSTALL TOGGLE SWITCH TO OPERATE (ON/OFF) IN THE HORIZONTAL POSITION.



**ENTERA**

Your total branding solution

5900 VENTURE CROSSINGS BLVD

PANAMA CITY, FL 32409

PH: 850-763-7982

FAX: 850-392-0673

www.enterabrading.com

THIS DOCUMENT CONTAINS PROPRIETARY AND CONFIDENTIAL INFORMATION OF ENTERA, LLC, AND SHALL NOT BE USED, DISCLOSED OR REPRODUCED, IN WHOLE OR IN PART, FOR ANY PURPOSE OTHER THAN TO EVALUATE THIS DOCUMENT, WITHOUT THE PRIOR WRITTEN CONSENT OF ENTERA, LLC. TITLE IN AND TO THIS DOCUMENT AND ALL INFORMATION CONTAINED HEREIN REMAINS AT ALL TIMES PROPERTY OF ENTERA, LLC.

COLOR NOTES:

A	VINYL TO MATCH 3M 3635-222 BLACK PERF.
B	XXXXXXXXXXXXXX
C	XXXXXXXXXXXXXX
D	XXXXXXXXXXXXXX

REVISION:

A

DESIGNER

RICHARD THEOBALD

DRAWING NUMBER

TPS110

CLIENT:

TOWNEPLACE SUITES

SCALE:

1:30

DATE:

08/24/2020

PAGE NUMBER:

1 OF 4

PAGE TYPE:

PRESENTATION





20" REMOTE MOUNT CHANNEL LETTERS • 93.96 SQFT

TOWNEPLACE  
SUITES  
BY MARRIOTT

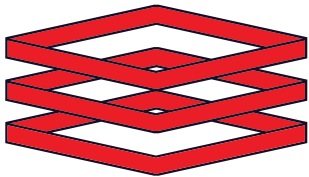
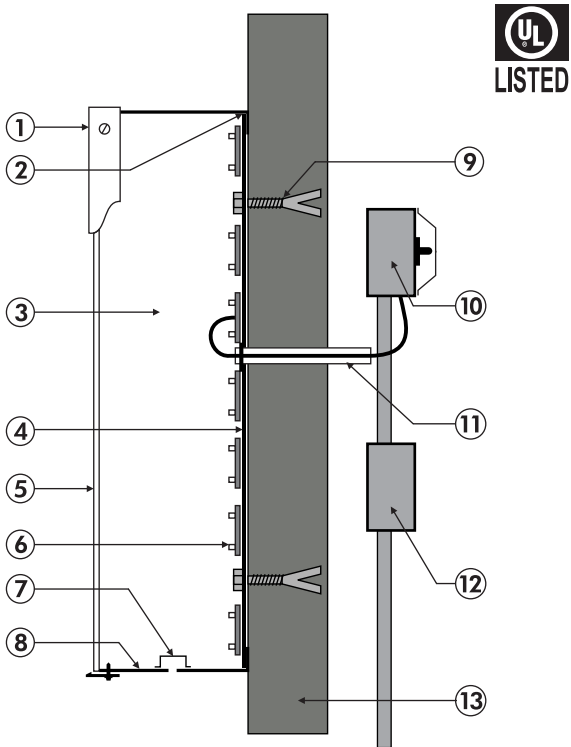
CUSTOM SPACING BETWEEN TOWNEPLACE SUITES & BY MARRIOTT CL



**ELECTRICAL INFORMATION:**  
SIGN LOAD = 8 AMPS.  
PRIMARY WIRING IS 120VOLT / 20AMP 12/12 WIRE FROM CIRCUIT IN ELECTRICAL PANEL.

FLUSH MOUNT LED FACE-LIT CHANNEL LETTERS

1. FACE TRIM-CAP - BLACK JEWELITE
2. SILICONE SEAL - TYPICAL
3. INTERIOR PAINTED WHITE
4. .063" ALUMINUM BACK
5. ACRYLIC FACE WITH BLACK PERFORATED VINYL
6. 24V GE TETRA LED MODULES
7. WEEP HOLES (BAFFLES AS REQUIRED)
8. .040 ALUMINUM RETURN - BLACK
9. 1/4"D. X 2" LONG LAG BOLT
10. LOW VOLTAGE LED POWER SUPPLY WITH LOCKING DISCONNECT
11. METAL PASS-THRU WITH 16GA LOW VOLTAGE WIRE
12. 20 AMP / 120 VOLT JUNCTION BOX BY OTHERS
13. FIBER CEMENT PANELS



**ENTERA**

Your total branding solution

5900 VENTURE CROSSINGS BLVD  
PANAMA CITY, FL 32409

PH: 850-763-7982

FAX: 850-392-0673

[www.enterabrading.com](http://www.enterabrading.com)

THIS DOCUMENT CONTAINS PROPRIETARY AND CONFIDENTIAL INFORMATION OF ENTERA, LLC. AND SHALL NOT BE USED, DISCLOSED OR REPRODUCED, IN WHOLE OR IN PART, FOR ANY PURPOSE OTHER THAN TO EVALUATE THIS DOCUMENT, WITHOUT THE PRIOR WRITTEN CONSENT OF ENTERA, LLC. TITLE IN AND TO THIS DOCUMENT AND ALL INFORMATION CONTAINED HEREIN REMAINS AT ALL TIMES PROPERTY OF ENTERA, LLC.

COLOR NOTES

LETTER FACE: ■ BLACK  
SEE MOUNTING SPECS

LOGO FACE:

RETURN: ■ BLACK  
JEWELITE: ■ BLACK

RACEWAY: BEHIND WALL

REVISION

1.	05.19.20 MW
2.	09.17.20 MW
3.	XXXXX
4.	XXXXX

ARTIST

MW

CLIENT

TOWNEPLACE SUITES

SCALE

3/8" = 1'-0"

DATE

05.05.20

LOCATION

DUBLIN, OH

H: MARKETING DESIGN / COR / M / MARRIOTT / TOWNEPLACE SUITES / DUBLIN, OH.cdr

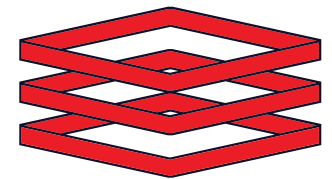
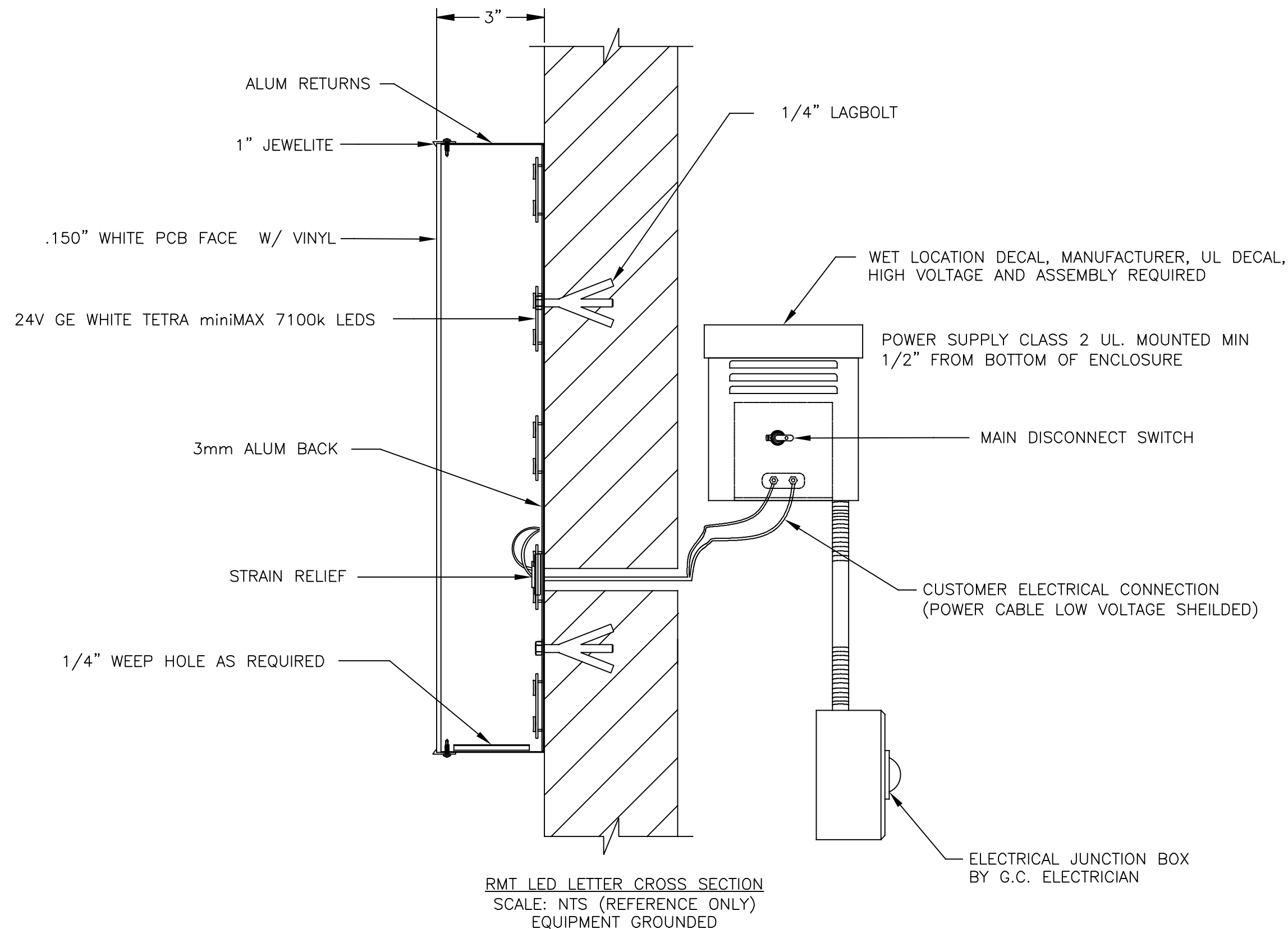
UL Underwriters  
Laboratories Inc.®  
LISTED

DEPARTMENT:  
ART

## 20" REMOTE MOUNT CHANNEL LETTERS • 93.96 SQFT

TOWNEPLACE  
SUITES  
BY MARRIOTT

CUSTOM SPACING BETWEEN TOWNEPLACE SUITES & BY MARRIOTT CL



**ENTERA**

Your total branding solution

5900 VENTURE CROSSINGS BLVD

PANAMA CITY, FL 32409

PH: 850-763-7982

FAX: 850-392-0673

www.enterabrading.com

THIS DOCUMENT CONTAINS PROPRIETARY AND CONFIDENTIAL INFORMATION OF ENTERA, LLC. AND SHALL NOT BE USED, DISCLOSED OR REPRODUCED, IN WHOLE OR IN PART, FOR ANY PURPOSE OTHER THAN TO EVALUATE THIS DOCUMENT, WITHOUT THE PRIOR WRITTEN CONSENT OF ENTERA, LLC. TITLE IN AND TO THIS DOCUMENT AND ALL INFORMATION CONTAINED HEREIN REMAINS AT ALL TIMES PROPERTY OF ENTERA, LLC.

### COLOR NOTES

LETTER FACE: ■ BLACK  
SEE MOUNTING SPECS

LOGO FACE:

RETURN: ■ BLACK  
JEWELITE: ■ BLACK

RACEWAY: BEHIND WALL

### REVISION

1.	05.19.20 MW
2.	09.17.20 MW
3.	XXXXX
4.	XXXXX

### ARTIST

MW

### CLIENT

TOWNEPLACE SUITES

### SCALE

3/8" = 1'-0"

### DATE

05.05.20

### LOCATION

DUBLIN, OH

H: MARKETING DESIGN / COR / M / MARRIOTT / TOWNEPLACE SUITES / DUBLIN, OH.dfr

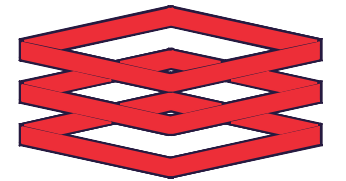


DEPARTMENT:  
ART

# TOWNEPLACE SUITES BY MARRIOTT

24V GE WHITE TETRA miniMAX 7100k LEDS, 160 MODULES @ 80 LFT  
(1) 100W POWER SUPPLY

ELECTRICAL BILL OF MATERIAL:			
80	LFT	LED0551	24V GE WHITE TETRA miniMAX 7100k LEDS
1	EA	LED0104	GEPS24-100 POWER SUPPLY
1	EA	ELT0015	TRANSFORMER BOX
1	EA	ELT0041	DISCONNECT SWITCH
4	LFT	ELT0089	CARFLEX
4	EA	ELT0092	SEALTITE CONNECTOR

**ENTERA**

## Your total branding solution

5900 VENTURE CROSSINGS BLVD

PANAMA CITY, FL 32409

PH: 850-763-7982

FAX: 850-392-0673

[www.enterabranding.com](http://www.enterabranding.com)

THIS DOCUMENT CONTAINS PROPRIETARY AND  
CONFIDENTIAL INFORMATION OF ENTERA, LLC, AND  
SHALL NOT BE USED, DISCLOSED OR REPRODUCED,  
IN WHOLE OR IN PART, FOR ANY PURPOSE OTHER  
THAN TO EVALUATE THIS DOCUMENT, WITHOUT THE  
PRIOR WRITTEN CONSENT OF ENTERA, LLC. TITLE IN  
AND TO THIS DOCUMENT AND ALL INFORMATION  
CONTAINED HEREIN REMAINS AT ALL TIMES  
PROPERTY OF ENTERA, LLC.

COLOR NOTES:

A	XXXXXXXXXXXXXX
B	XXXXXXXXXXXXXX
C	XXXXXXXXXXXXXX
D	XXXXXXXXXXXXXX

## REVISION:

A

## DESIGNER

RICHARD THEOBALD

## DRAWING NUMBER

TPS110

CLIENT:

TOWNPLACE SUITES

SCALE:

1:30

## DATE:

08/24/2020

## PAGE NUMBER:

3 OF 4

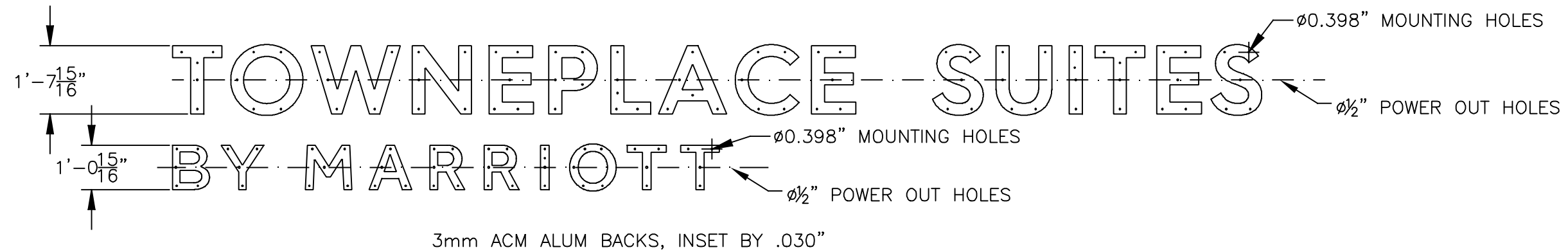
## PAGE TYPE:

## LED LAYOUT

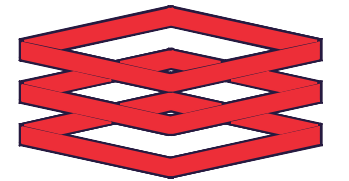


**Underwriters  
Laboratories, Inc. •**  
LISTED

DEPARTMENT:  
DESIGN



MATERIAL LIST:			
64	SQFT	ACM0001	3mm ACM ALUMINUM
64	SQFT	PR0040	.150" WHITE PCB



**ENTERA**  
Your total branding solution

5900 VENTURE CROSSINGS BLVD  
PANAMA CITY, FL 32409  
PH: 850-763-7982  
FAX: 850-392-0673  
[www.enterabranding.com](http://www.enterabranding.com)

THIS DOCUMENT CONTAINS PROPRIETARY AND CONFIDENTIAL INFORMATION OF ENTERA, LLC, AND SHALL NOT BE USED, DISCLOSED OR REPRODUCED, IN WHOLE OR IN PART, FOR ANY PURPOSE OTHER THAN TO EVALUATE THIS DOCUMENT, WITHOUT THE PRIOR WRITTEN CONSENT OF ENTERA, LLC. TITLE IN AND TO THIS DOCUMENT AND ALL INFORMATION CONTAINED HEREIN REMAINS AT ALL TIMES PROPERTY OF ENTERA, LLC.

COLOR NOTES:

A	XXXXXXXXXXXXXX
B	XXXXXXXXXXXXXX
C	XXXXXXXXXXXXXX
D	XXXXXXXXXXXXXX

REVISION:

A

DESIGNER

RICHARD THEOBALD

DRAWING NUMBER

TPS110

CLIENT:

TOWNEPLACE SUITES

SCALE:

1:30

DATE:

08/24/2020

PAGE NUMBER:

4 OF 4

PAGE TYPE:

AUTOMATION

