

Setback 8' from ROW

40ft
Degrees

City of Columbus GIS
POWERED BY
esri

432

434

273001629

410

412

414

416

273002492 273002491 273002490
402 400 398

241

243

245

247

249

251

237

235

233

231

229

239

219

221

223

225

273001636

220

222

224

226

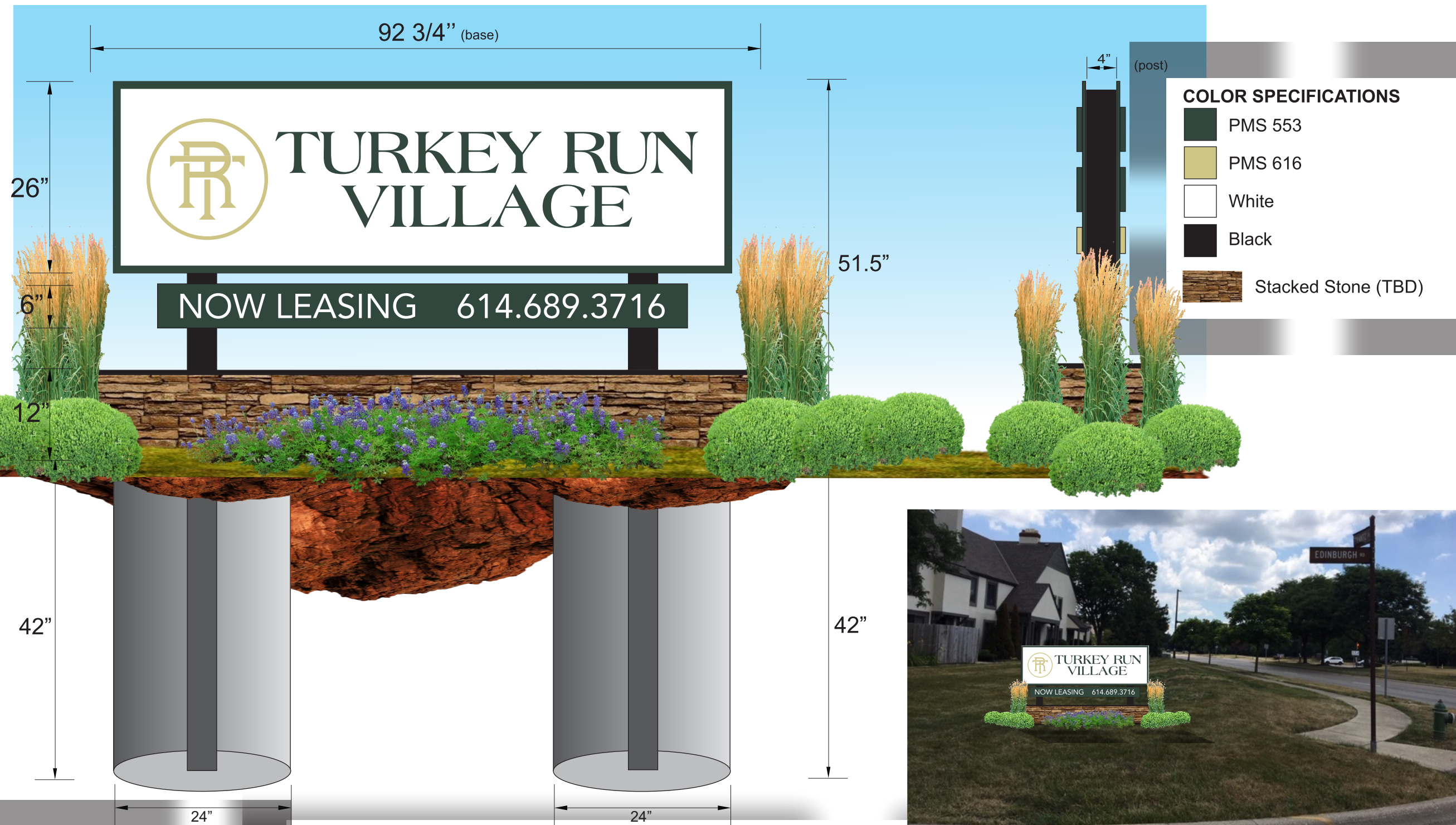
228

230

273001632

234

This project is an original design concept created for your personal use in connection with a project planned for you by Sign Vision Co. This design is not to be used, copied, reproduced or exhibited outside of your organization unless written permission has been given by a member of Sign Vision Co.

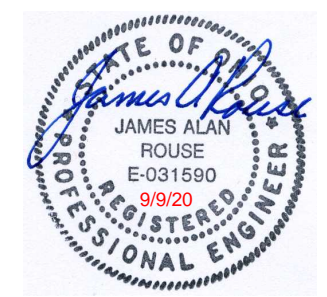


COLOR SPECIFICATIONS

	PMS 553
	PMS 616
	White
	Black
	Stacked Stone (TBD)

FOUNDATION SPECIFICATIONS
 Exposure B
 (2) 4" x 4" square tube
 (2) 24" x 42" deep caisson
 concrete foundation
 wind load: 90mph
 COSA: ASCE/SEI 7-05
 Sign Size: 20 sq. ft.

- JOB SPECIFICATIONS**
- Manufacture (1) 51.5" x 92.75" (overall size) double-sided non-illuminated monument sign per artwork. 12" tall aluminum sign base covered with Stacked Stone HDU. Aluminum. drip edge top cap, painted black. (2) 4" x 4" x 93" long aluminum square tubes, painted Black. (2) 6" tall ACM (single-sided) sign panels, painted Green with White vinyl graphics reading: "NOW LEASING w/ phone #". (2) White ACM sign faces with 1/4" thick PVC individual graphics reading: "(logo) Turkey Run Village" painted Green and Gold.
 Note - Sections of sign and ground poles to be assembled in field.
 - Dig new foundation, set square tubes and install monument sign perpendicular to Frantz Rd. Includes getting required inspections.
 - Concrete, square tubes and other foundation materials.



2017 OBC - ASCE 7-10
 * Wind Load - Risk Category II:
 Speed - V_{ult} = 115 mph
 Speed - V_{asd} = 90 mph
 Exposure B
 * Class 4 Soil with
 Lateral Bearing = 150 psf/ft



CORPORATE OFFICES:
 987 CLAYCRAFT ROAD
 COLUMBUS, OHIO 43230
 PHONE: (614) 475-5161

JOB TITLE:
 Turkey Run Village
 Dublin, OH

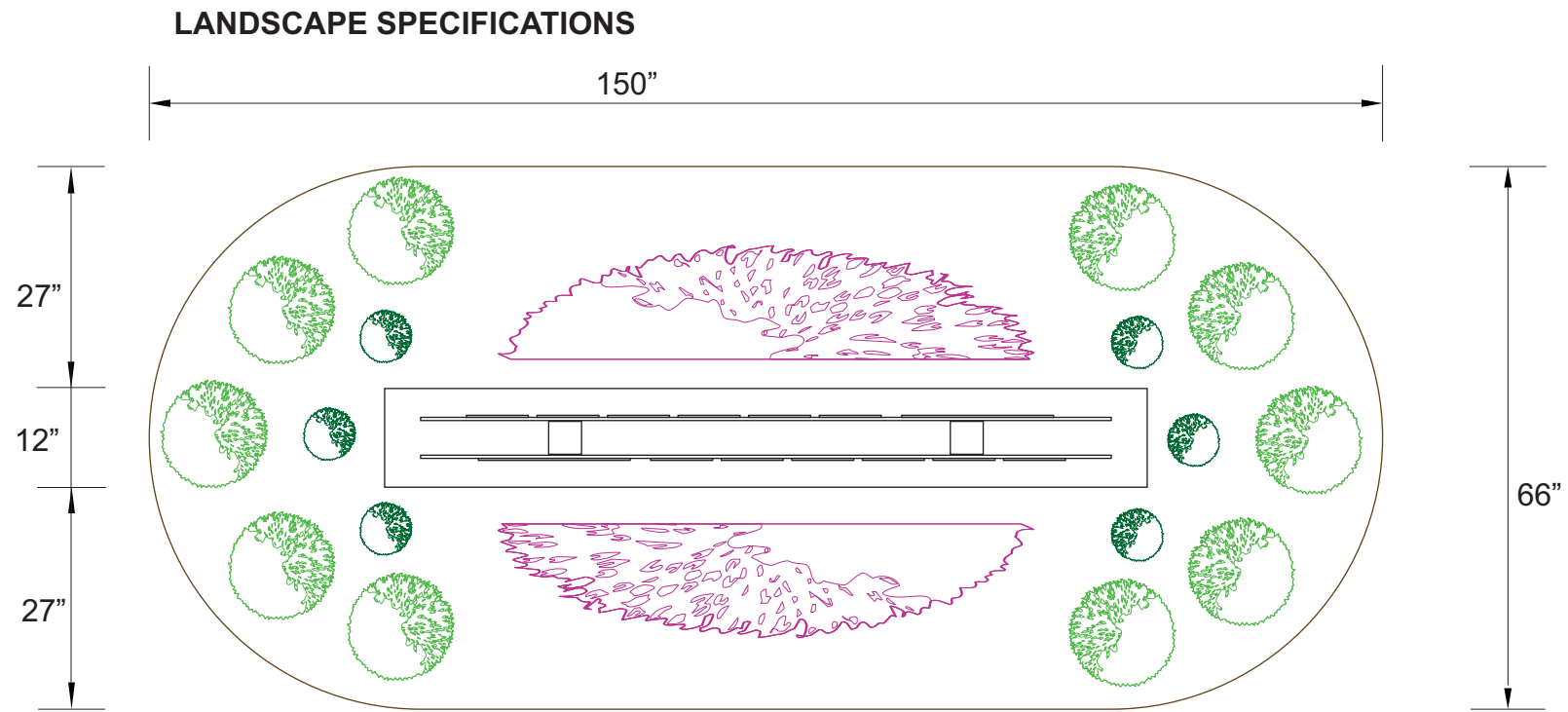
DATE: 09.08.20
SALESMAN: Darrin Gray
DESIGNER: Scott Kaley
DRAWING #: 07

FILE:
REVISION:
REVISION:

APPROVED WITH CORRECTIONS
NOT APPROVED RESUBMIT
SIGNATURE: _____




YOUR SIGNATURE REPRESENTS FINAL APPROVAL. PLEASE LOOK OVER CAREFULLY. CHECK ALL SPELLING AND GRAMMAR. SIGN VISION CAN NOT BE RESPONSIBLE FOR ANY ERRORS AFTER FINAL APPROVAL.

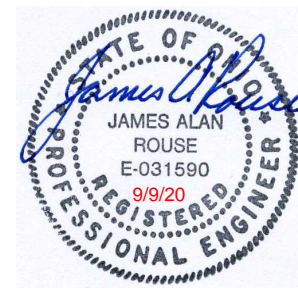
This project is an original design concept created for your personal use in connection with a project planned for you by Sign Vision Co. This design is not to be used, copied, reproduced or exhibited outside of your organization unless written permission has been given by a member of Sign Vision Co.



66" x 150" rounded rectangle shaped landscape with mulch, (10) winter gem boxwoods, (6) Karl Foerster Feather Reed Grass, and (2) beds of annuals.

Sign Vision Co. not responsible for landscaping.

-  Winter Gem Boxwood
-  Karl Foerster Feather Reed Grass
-  Annuals



2017 OBC - ASCE 7-10
 * Wind Load - Risk Category II:
 Speed - $V_{ult} = 115$ mph
 Speed - $V_{asd} = 90$ mph
 Exposure B
 * Class 4 Soil with
 Lateral Bearing = 150 psf/ft



CORPORATE OFFICES:
 987 CLAYCRAFT ROAD
 COLUMBUS, OHIO 43230
 PHONE: (614) 475-5161

JOB TITLE:	DATE: 07.30.20	FILE:	APPROVED <input type="checkbox"/>
SALESMAN: Darin Gray	DESIGNER: Scott Kelley	REVISION:	APPROVED WITH CORRECTIONS <input type="checkbox"/>
DRAWING #06		REVISION:	NOT APPROVED RESUBMIT <input type="checkbox"/>
		SIGNATURE: _____	

YOUR SIGNATURE REPRESENTS FINAL APPROVAL. PLEASE LOOK OVER CAREFULLY. CHECK ALL SPELLING AND GRAMMAR. SIGN VISION CAN NOT BE RESPONSIBLE FOR ANY ERRORS AFTER FINAL APPROVAL.