

A large, moss-covered tree trunk stands in a forest. The moss is a vibrant green, contrasting with the brown bark. The background is filled with other trees and foliage, creating a dense, natural setting. The lighting is soft, highlighting the texture of the moss and the bark.

NATURAL WOOD BEAUTY

EXTERIORS

Prodema

NATURAL WOOD BEAUTY

PRODEX

Prodema

NATURAL WOOD BEAUTY



EXTERIORS



Prodema in the world

● Prodema Representatives



**1 NATURAL WOOD
BRINGS YOUR
PROJECTS TO LIFE**





Natural wood enhances the look of any building with its unique style, beauty and elegance.

Our natural wood performs impressively and conforms to the most innovative designs in facade coverings.

We have a deep respect for nature and quality of life.

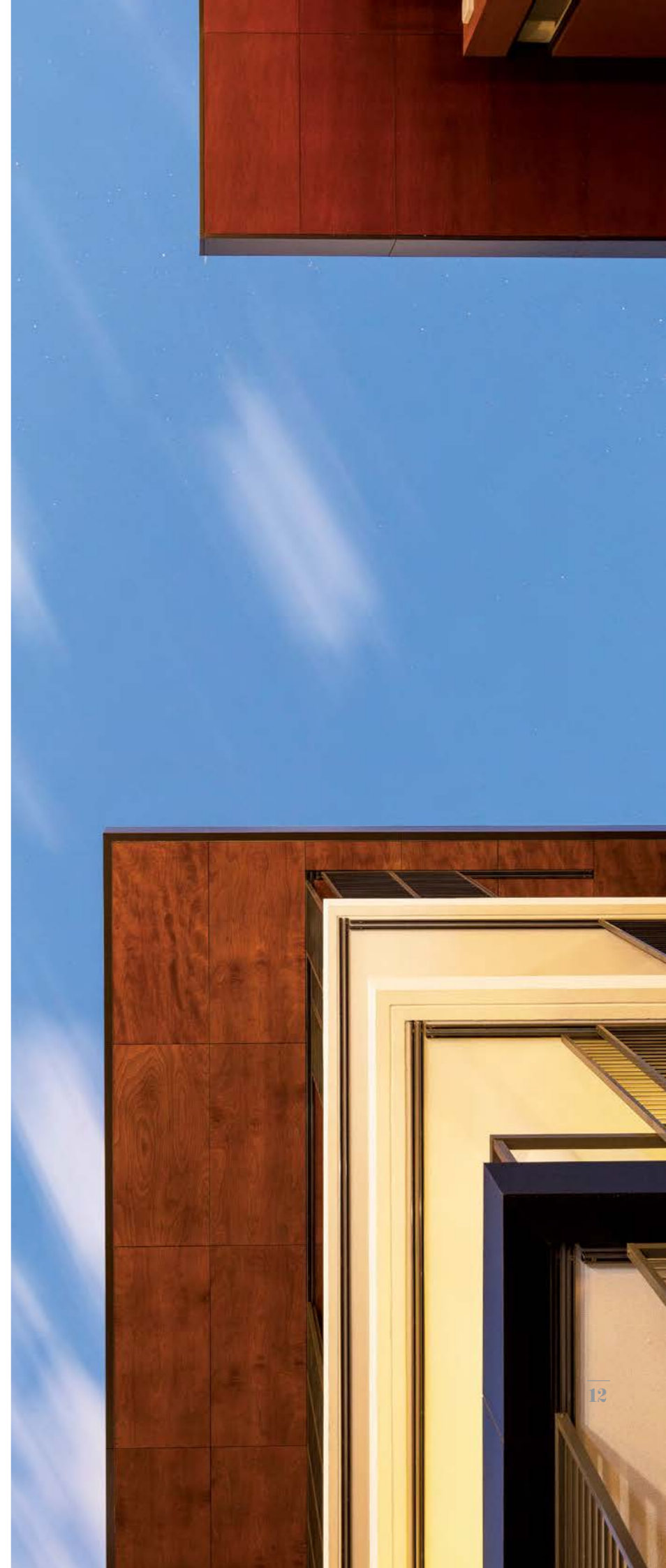




THE ELEGANCE OF NATURAL WOOD

Our objective is to provide the world of architecture with unique materials that help architects design warm, beautiful, comfortable spaces that improve the quality of life for all.

Energy efficient buildings with the elegance of natural wood.





**2 BOUNDLESS
CREATIVITY**

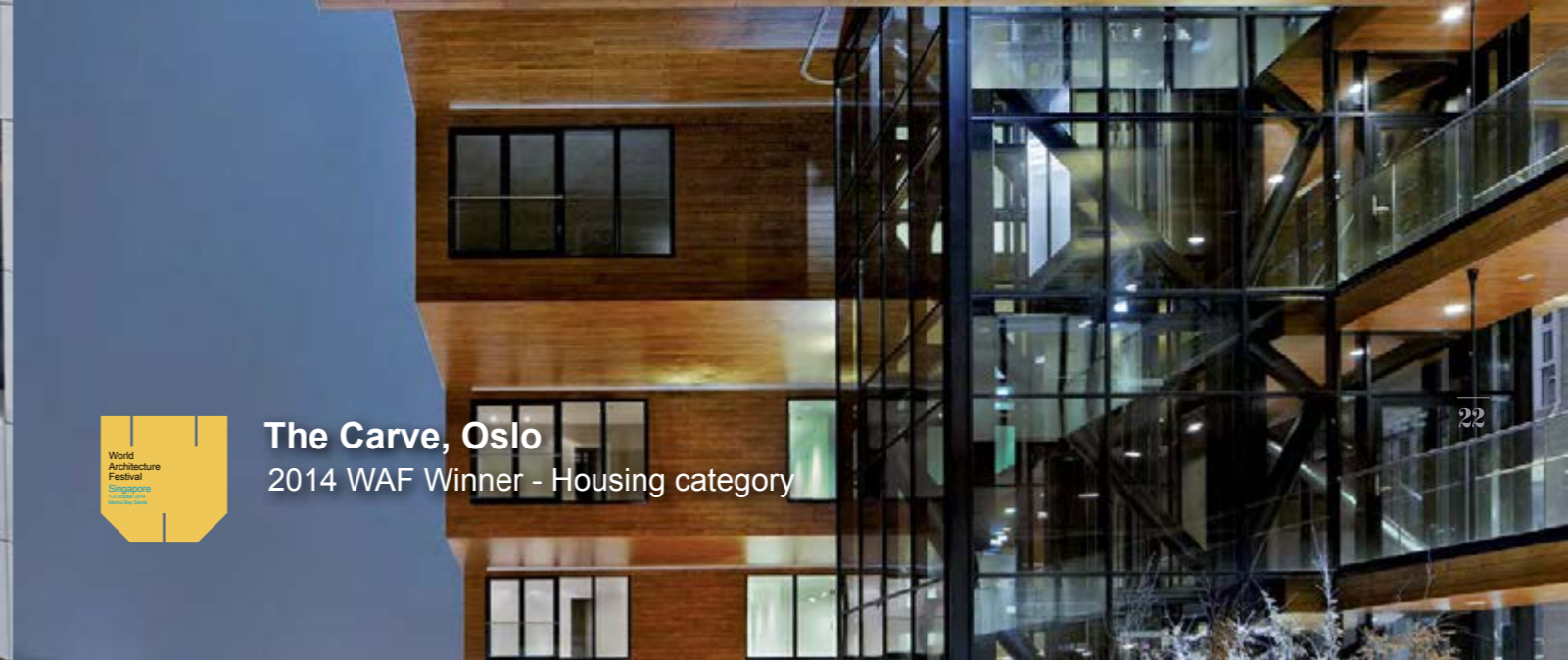
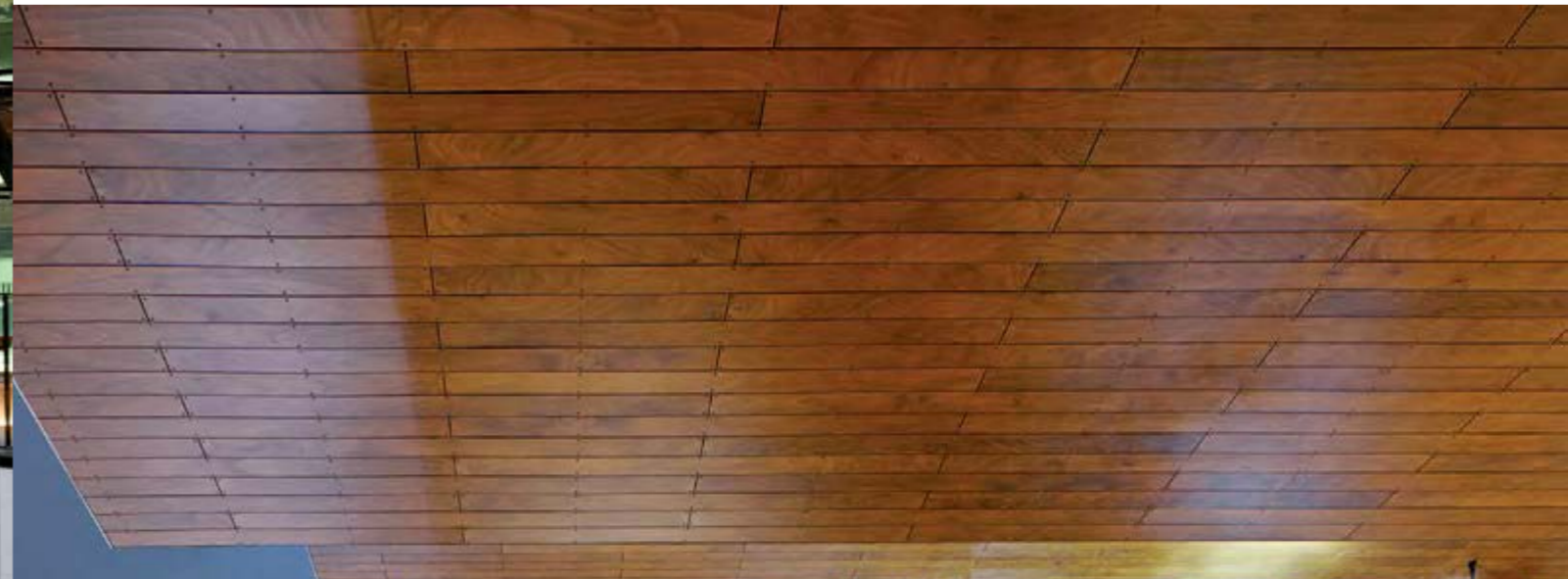




PRODEX pushes the envelope in facade design as architects partner with **Prodema** to create innovative designs never thought possible. A product that allows your vision become reality by offering versatility, warmth, elegance, and remarkable performance.

Here at **Prodema** we work hard to be a source of inspiration for architects. This partnership has translated into prestigious architectural design awards, globally.





The Carve, Oslo
2014 WAF Winner - Housing category



Harry Parker Boathouse, Boston

2014 AIA Institute Honor Awards for Architecture.
Chicago Athenaeum American Architecture Award 2008.



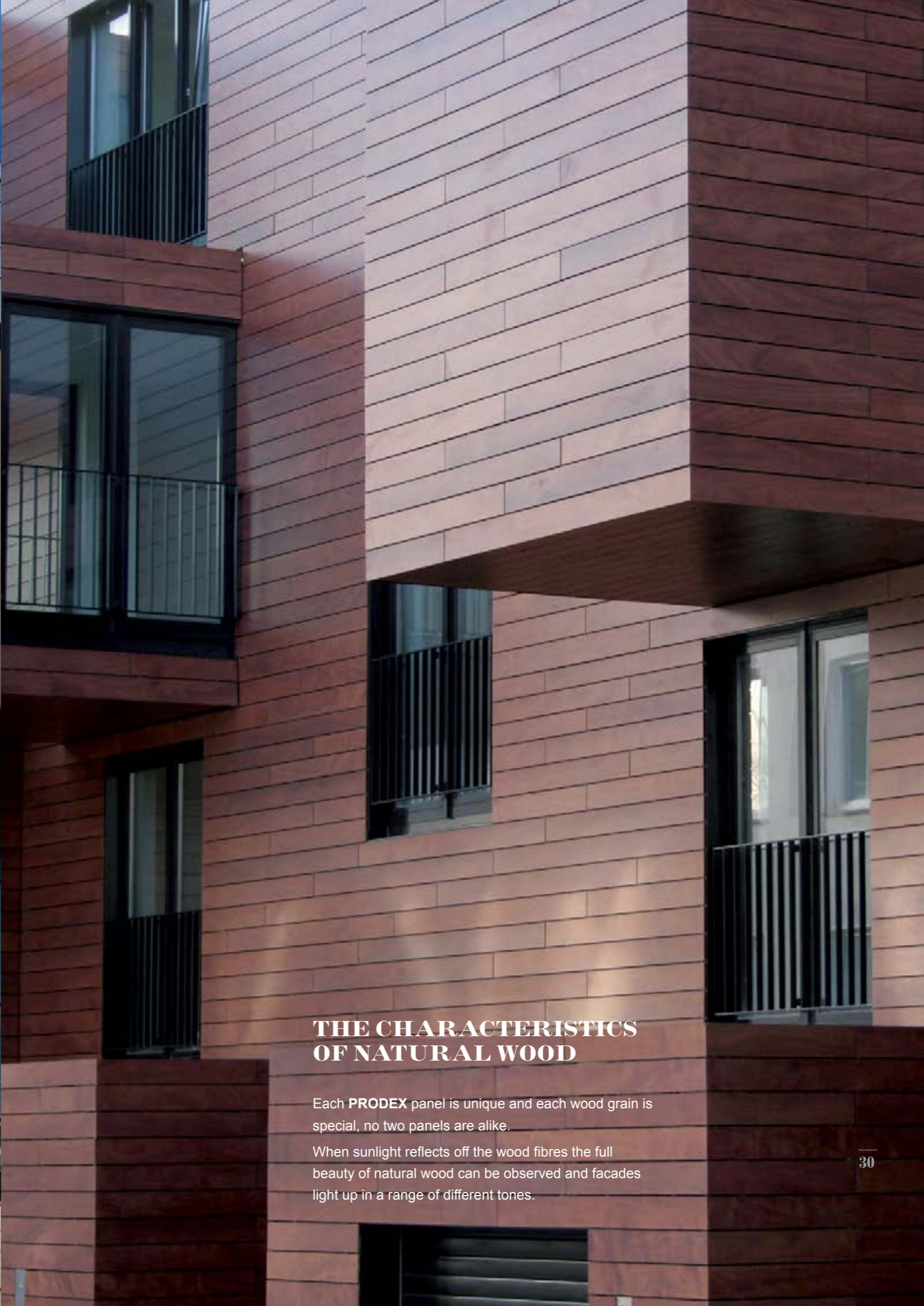
3 MAINTENANCE FREE NATURAL WOOD





At **Prodema** we specialize in creating natural wood products of the highest quality for the world of architecture and design. Following years of research and development we are proud to offer a unique, innovative and high-tech product with no need for the regular maintenance usually required by other wood exteriors.

We created a highly resistant PVDF outer film that protects **PRODEX** from nature's elements, creating a product which is totally maintenance free. This PVDF film is also anti-graffiti and non-stick, preventing organic matter from developing on the panel's surface and reducing the build-up of dust and dirt from ambient pollution.



THE CHARACTERISTICS OF NATURAL WOOD

Each **PRODEX** panel is unique and each wood grain is special, no two panels are alike.

When sunlight reflects off the wood fibres the full beauty of natural wood can be observed and facades light up in a range of different tones.



**4 COMMITTED
TO NATURE**



At **Prodema** quality design and innovation are of utmost important to us. However, our respect for nature is even more important: being both our source of material and our inspiration. At **Prodema** we work to promote sustainable construction by maximizing wellbeing with environmental efficiency in building projects.

Using **Prodema** also provides **points in green building certification schemes such as LEED** (Leadership in Energy and Environmental Design) or **BREEAM** (Building Research Establishment Environmental Assessment Methodology).

Prodema also boasts **PEFC** certification, the guarantee that our products have been manufactured with raw forest materials managed in a socially and environmentally responsible way.





**5 PRODEX THE
PERFECT SKIN FOR
VENTILATED FACADES**



ROYAL
BANK

ROYAL
BANK

TOU ROOMS

McGill Meeting Tree

ROYAL BANK



PRODEX in a ventilated facade is an excellent protective cladding as it prevents rainwater from entering walls and insulation leaving them humidity free thanks to the flow of air behind the panels.

Buildings with a ventilated facade system are well insulated and protected from rainwater throughout the year. They create more comfortable living conditions as temperature variations are reduced to a minimum and energy is saved.

In addition to this, its high quality, versatility, easy installation and minimum maintenance make **PRODEX** the perfect skin for buildings.

Please refer to the **PRODEX** technical catalogue for all information needed on installation.



MOUNTING SYSTEMS

Concealed:

The concealed fixing system is available for both walls and ceilings. The attachment system hides behind the panel for those projects requiring an aesthetically smooth facade, free of hardware.



Exposed:

This is the most common mounting system employed with **PRODEX** panels: simple, strong and more cost-effective than other systems.

SUSPENDED CEILING: VISIBLE FIXINGS



SUSPENDED CEILING: CONCEALED FIXINGS



LOUVERS

Louvers are the perfect complement to a ventilated facade, they are designed to cover glass spaces and other surfaces and make it possible to control sunlight as well as energy consumption within a building.

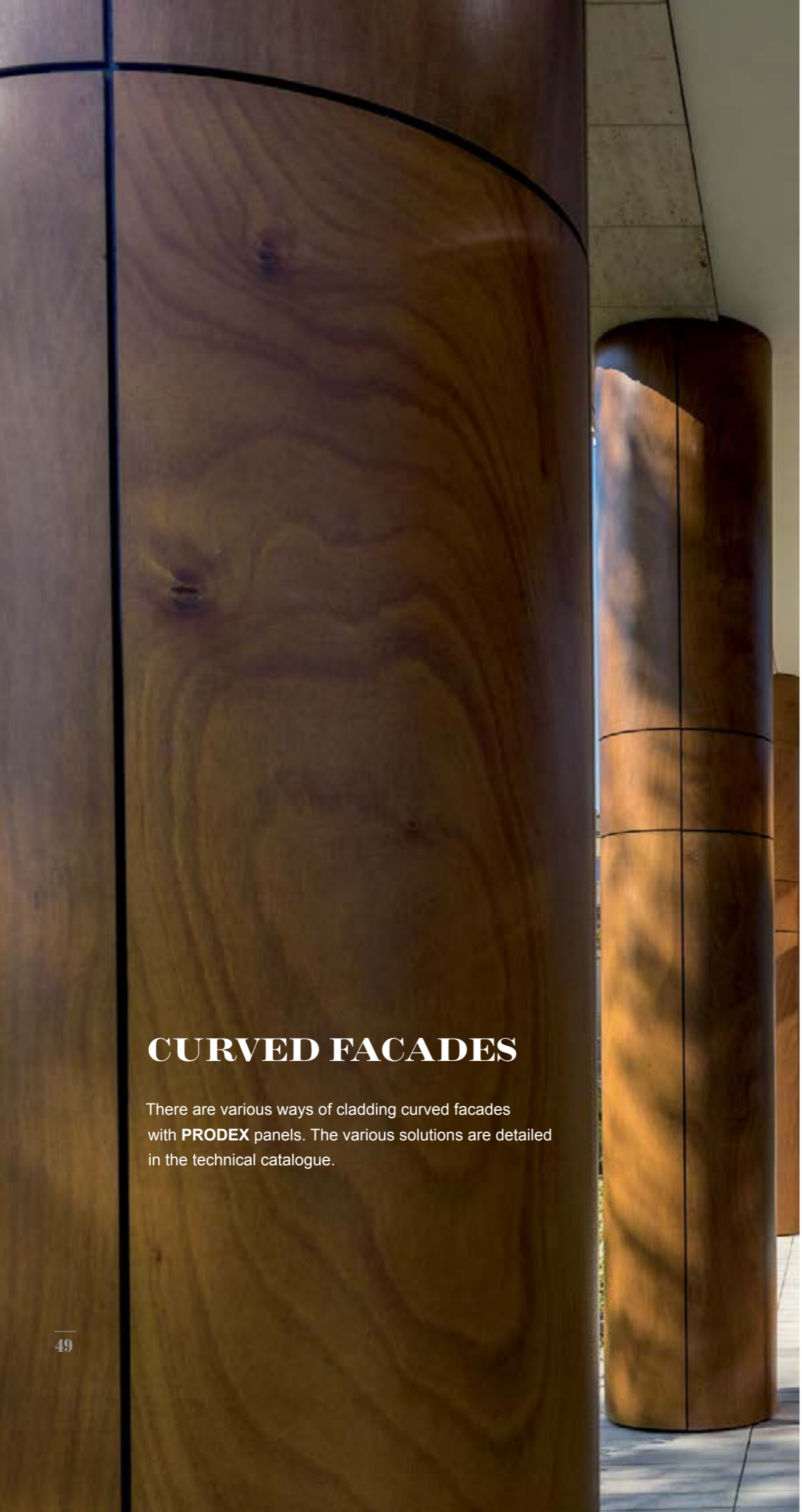
Surry Hills library, Sydney

National Architecture Awards 2011. Global Design Award 2011.
National Award for Sustainable Architecture and National Award for
Public Architecture at the National Architecture Awards.

CLAPBOARD FACADE

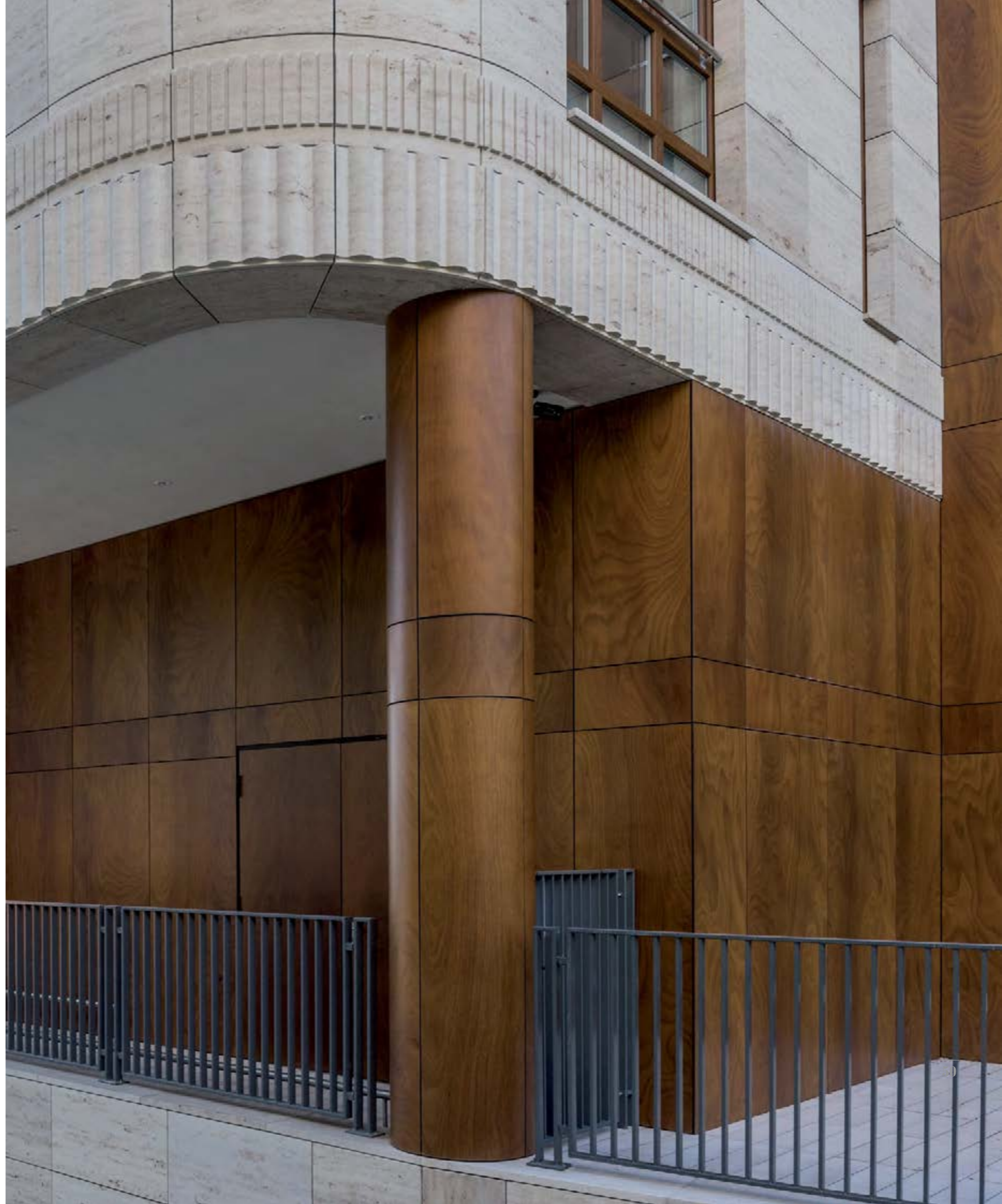
This mounting system transforms your facade into traditional clapboard siding with all the benefits of a ventilated facade.





CURVED FACADES

There are various ways of cladding curved facades with **PRODEX** panels. The various solutions are detailed in the technical catalogue.





6 PRODEX COLORS



Pale



Rustik

Deep Brown

Dark Brown





Light Brown



Nux



Mocca

greenstore



Mint



Cream

Ice Grey

IN THE **PRODEX** TECHNICAL CATALOGUE ALL THE TECHNICAL SPECIFICATIONS AND POSSIBLE USES FOR THE PRODUCT CAN BE FOUND

PANEL COMPOSITION:

PRODEX panels have a bakelite core covered with a natural wood veneer that is specially treated to ensure maximum resistance.

We have developed an exterior PVDF film with non-stick qualities in order to achieve a maximum level of care for the wood, ensuring panels are protected from moisture, rain, sunlight, and even the build-up of dirt on the panels' surface.

MAINTENANCE-FREE:

PRODEX natural wood panels do not need the regular maintenance other woods for exterior require.

AESTHETIC:

PRODEX panels offer the design world the possibility to create natural, living facades with a wide range of tones and creative options available.

RESISTANCE AND DURABILITY:

PRODEX panels are the perfect material for cladding facades thanks to the panel's technical qualities. The panel's bakelite core means it is possible to adjust the panel's thickness and its subsequent technical qualities making **PRODEX** the ideal solution for all types of projects.

PRODEX panels are extremely hard, rendering them perfectly resistant to continuous exposure to sunlight and sharp changes in temperature and humidity.

They also offer a high level of durability against termite attacks and maximum resistance to vandalism.

PRODEX panels also offer excellent dimensional stability.

CLEANING:

The PVDF surface prevents dust and all kinds of dirt from sticking to the panel surface, ensuring ease of maintenance and cleaning.

ANTI-GRAFFITI RESISTENCE:

The outer chemical non-stick layer impregnated into **PRODEX** panels prevents aerosol paint from sticking permanently to the surface.

PANEL DIMENSIONS:

Length x width: 2.440 mm x 1.220 mm. Thicknesses 6, 8, 10, 12, 14, 16, 18, 20, 22 mm.

FIRE RATING:

On request, panels may be supplied with different reactions to fire in line with standard EN 13.501-1:

▼ **PRODEX C** - s1, d0

▼ **PRODEX IGN B** - s1, d0

▼ **PRODEX**: Class B for North America

▼ **PRODEX IGN**: Class A for North America

AYOUS VENEER



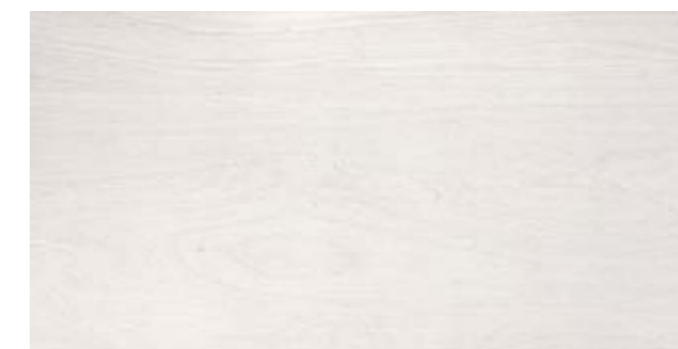
Dark Brown



Light Brown



Pale



Cream



Mocca



Mint

OKUME VENEER



Deep Brown



Rustik



Ice grey



Nux

Prodema

NATURAL WOOD BEAUTY

TECHNICAL CATALOG

EXTERIORS

CONCEALED
SLAT SYSTEM

Prodema
NATURAL WOOD BEAUTY

PRODEX



EDITION N° 3

01/2020

SPECIFIC Catalog FOR

USA & CANADA

It is necessary to follow all of the instructions contained within this technical catalog to ensure the successful installation of **PRODEX** panels and maintain a valid warranty.

For technical queries, alternative installation systems, etc., we recommend contacting **Prodema USA, Inc.** (prodemausa@prodema.com)

The updated version of this catalog can be found on the **Prodema** website.



CONTENTS

1. PRIOR TO INSTALLATION OF THE PRODUCT

1.1 RECEIPT OF MATERIAL	6
1.2 HANDLING AND STORAGE	6
1.3 RANDOM POSITIONING OF PANELS	7
1.4 FABRICATION	8
1.4.1 CUTTING RECOMMENDATIONS	8
1.4.2 DRILLING RECOMMENDATIONS	9
1.4.3 PERFORATION RECOMMENDATIONS	10

2. INSTALACIÓN DEL PRODUCTO

2.1 GENERAL CONCEPTS	12
2.1.1 VENTILATED FAÇADES	12
2.1.2 EXPANSION JOINTS	14
2.1.3 DIMENSIONAL STABILITY	15
2.1.4 SUBFRAMING OPTIONS	16
2.1.5 MINIMUM SUPPORT POINTS PER PANEL	18
2.1.6 TONGUE AND GROOVE AND COUNTERSUNK SCREWS	19
2.2 INSTALLATION SYSTEMS	20
2.2.1 PR-CF40: CONCEALED SLAT SYSTEM	20
2.3 INSTALLATION DETAILS	26
2.3.1 PR-CF40: CONCEALED SLAT SYSTEM	26

3. POST-INSTALLATION

3.1 REMOVING THE PROTECTIVE SURFACE	27
3.2 CLEANING	27
3.3 MAINTENANCE	28
3.4 REPAIR	28

4. REMOVAL INFORMATION

4.1 REMOVAL	28
4.2 WASTE MANAGEMENT	28

5. ACCESSORIES

5.1 ELEMENTS FOR THE EXPOSED FASTENING SYSTEM	29
5.1.1 SUBFRAME	29
5.2 SPECIFIC ELEMENTS FOR THE SLAT SYSTEM	30
5.2.1 GENERAL ACCESSORIES FOR THE SLAT SYSTEM	30

1 PRIOR TO INSTALLATION OF THE PRODUCT

1.1 RECEIPT OF MATERIAL

Verify condition of package:

- In the case of visible damage, leave details on the transporter's delivery note.
- In the case of hidden damage, notify within 72 hours.

No claims will be accepted for transport damage if any of these instructions are not followed.

1.2 HANDLING AND STORAGE



- **PRODEX** panels must be stored in a closed and climate controlled area, at an ambient temperature of 50°-70° F (10°-25° C) and with an air humidity of 30-70%.

- It is recommended to store **PRODEX** panels in their original packaging until the time of installation. In the case of having to repackage any panel, this should be done under the same conditions as the original packaging.

- Once the packaging has been opened, it is recommended to remove only those **PRODEX** panels that will be installed immediately. The remaining panels must then be stored under the same conditions in the original packaging.

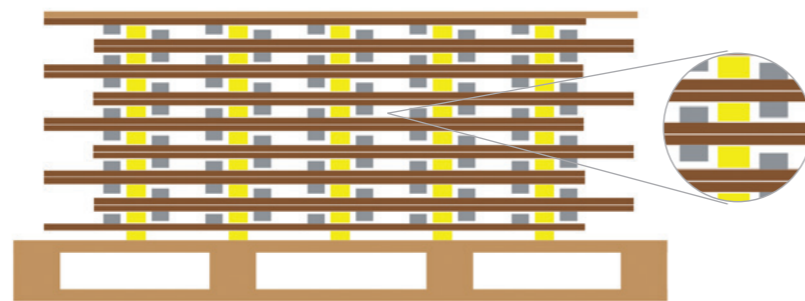
- **PRODEX** panels cannot be stored vertically, only in a horizontal position on a pallet with supports < 31 1/2" (800mm) in distance. Improper storage can result in warping of panels.

- The floor supporting the pallet must be free of material and debris that may affect the stability of the pallet.

- During transport, **PRODEX** panels must be properly secured as they easily slide when stacked, resulting in damage. They must always be placed horizontally on a flat surface.



- It is recommended to avoid exposure of both sides of the **PRODEX** panel to different humidity and temperature conditions. When **PRODEX** panels have been fitted with fastening elements (such as clips for a concealed installation), they must be stored face to face; back to back, using wood or plastic supports placed between panels at a maximum distance of 23 5/8" (600mm).



- These instructions also apply to cut panels.

1.3 RANDOM POSITIONING OF PANELS

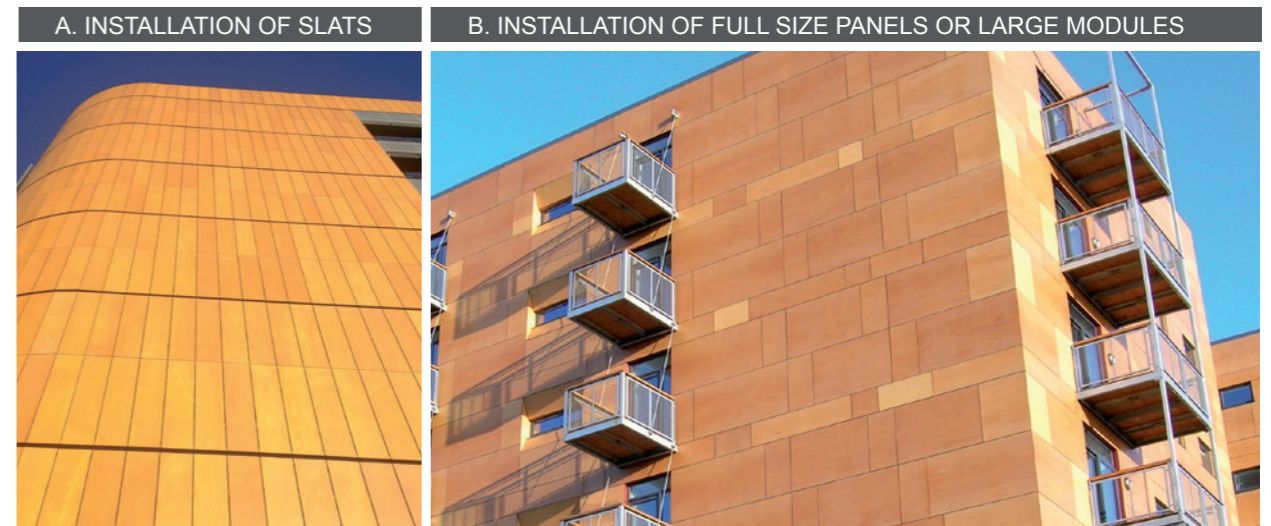
PRODEX panels are manufactured with natural wood and therefore will exhibit variations in tone. Prior to fabrication and installation, it is recommended to mix panels to achieve an even distribution of tones throughout the facade. The steps to follow are detailed below:

1. Number all the pallets 1, 2, 3, etc. The pallets must be stored throughout the fabrication / installation process in accordance with the requirements described in section 2.2.
2. Open pallet No. 1 and remove two panels - Place these two panels on a flat pallet, with a maximum distance of 31 1/2" (800mm) between supports.
3. Turn over the third panel from pallet No. 1 without removing it from the pallet.
4. Close pallet No. 1 and store it respecting the packaging conditions in section 2.2.
5. Repeat the same process with the other pallets, selecting them in a random order until 10 to 20 panels have been removed. For example, if there are 20 pallets, remove panels from numbers 1, 8, 13, 15 and 20, or other random order.
6. Mix the 10 to 20 panels that have been removed and install them within 2 to 3 hours from the time the first panel was removed.
7. Repeat the first six steps until all the panels have been installed.

PANEL MODULE SIZE

Depending on the module size selected for the façade, the aesthetic result in the majority of cases summarized as the following two options:

- A. Installation of slats.
- B. Installation of full size panels or large modules.



Natural wood will always show variations in tone from panel to panel. This variation of color between panels is more obvious when installing large size panels (photo on right). However, the difference in color will be minimized when smaller size panels are used (photo on left). This is most notable only in the Rustik and Pale colors. If you wish to see less color variance, a control sample must be sent with material order. We will then do our best to produce panels that are more homogeneous in color, although there will always be variations.

1.4 FABRICATION

1.4.1 CUTTING RECOMMENDATIONS

Panels need to be squared before cutting begins.

Cuts made to the exterior panels must be performed using tools with a material hardness of K - 05 and K - 01 (Tungsten carbide / Widia), be well sharpened and avoid overheating at all times.

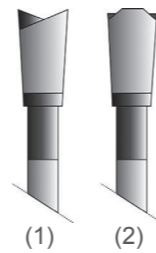
A. SAW

Types of Saw and Blades:

Circular saw blades for wood made from hard material (Widia tip) or blades designed for HPL (high pressure laminate) panels.

Parameters for saw blades according to tool type:

	BLADE DIAMETER	TEETH (z)	SPEED (rpm)	BLADE THICKNESS	TYPES OF TOOTH
Static circular saw	12"	80	4000-6000	1/8"	Flat, trapeze, alternate and all their combinations
	10"	80	4000-6000	1/8"	
Manual circular saw	17.5"	30	3000-3500	3/32"	



Positioning the Panel

The saw blade must always begin cutting on the front side (face) of the panel.

- Table saw: the front face of the panel must be face up.
- Manual saw: the front face of the panel must be face down.

Height of Cutting Blade:

In order to obtain a clean cut, we recommend the height of blade to be 1-2cm above the panel face.



After Cutting:

After fabrication (cutting, drilling, sanding of edges, if required), no other treatment for finishing or protection is required. Rough edges may be smoothed out with sand paper.

B. CNC

The **PRODEX** panel can be fabricated with computerized numeric control (CNC) machines. Ensure that bits are always well sharpened.

Recommended Speeds:

- Cutting speed: 16,000 rpm.
- Feed speed: 4m/min.

It is very important to avoid overheating of the equipment. The above recommended speeds must be monitored throughout the fabrication process to ensure optimal results.

C. ALTERNATIVE SYSTEMS

Apart from the already mentioned systems, there are other fabrication options. Not all of them are compatible with the material.

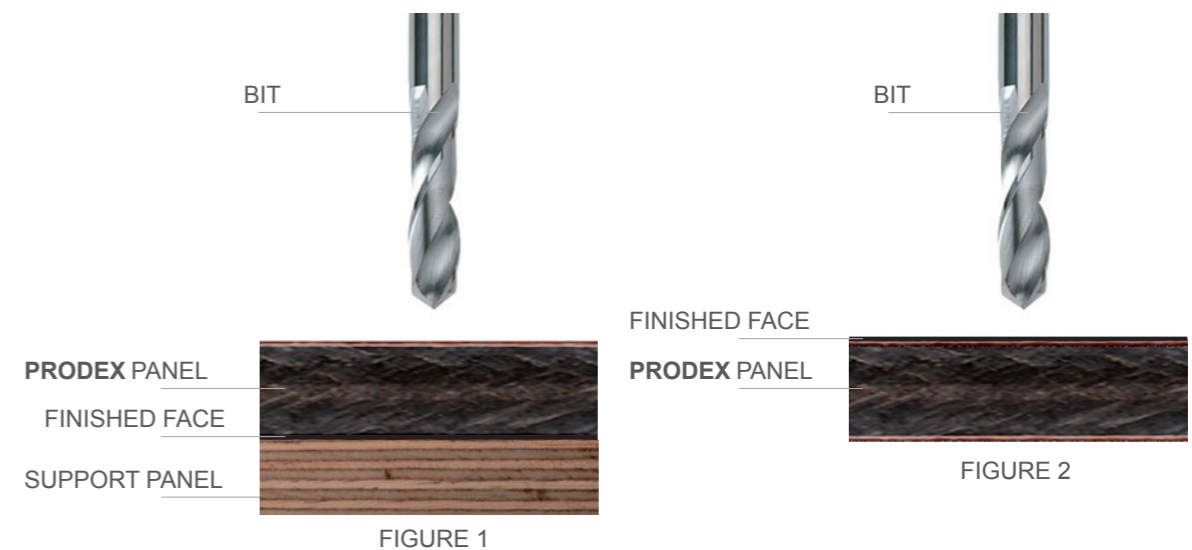
• **Waterjet Cutting:** this system is compatible with the **PRODEX** panels, however, it is advisable to carry out a test beforehand to adjust the parameters.

• **Laser Cutting:** this system is not recommended for use on **PRODEX** panels as they blacken and burn the wood veneer.

1.4.2 DRILLING RECOMMENDATIONS

The **PRODEX** panels are drilled using hard metal drill bits or steel bits with tungsten carbide tips (Widia) with a cutting angle greater than 100°. Bits for perforating metal may also be used.

In order to avoid any splintering of the material to be drilled, it is best to use a support plate under the panel to obtain a clean hole (see figure 1). If a support plate is not used, the finished face of the panel will face up (see figure 2).



Drilling Speed Recommendations:

- Cutting Speed: 16,000 rpm.
- Feed Speed: 4m/min.

NOTE: Only use as reference as these will vary according to each tool.

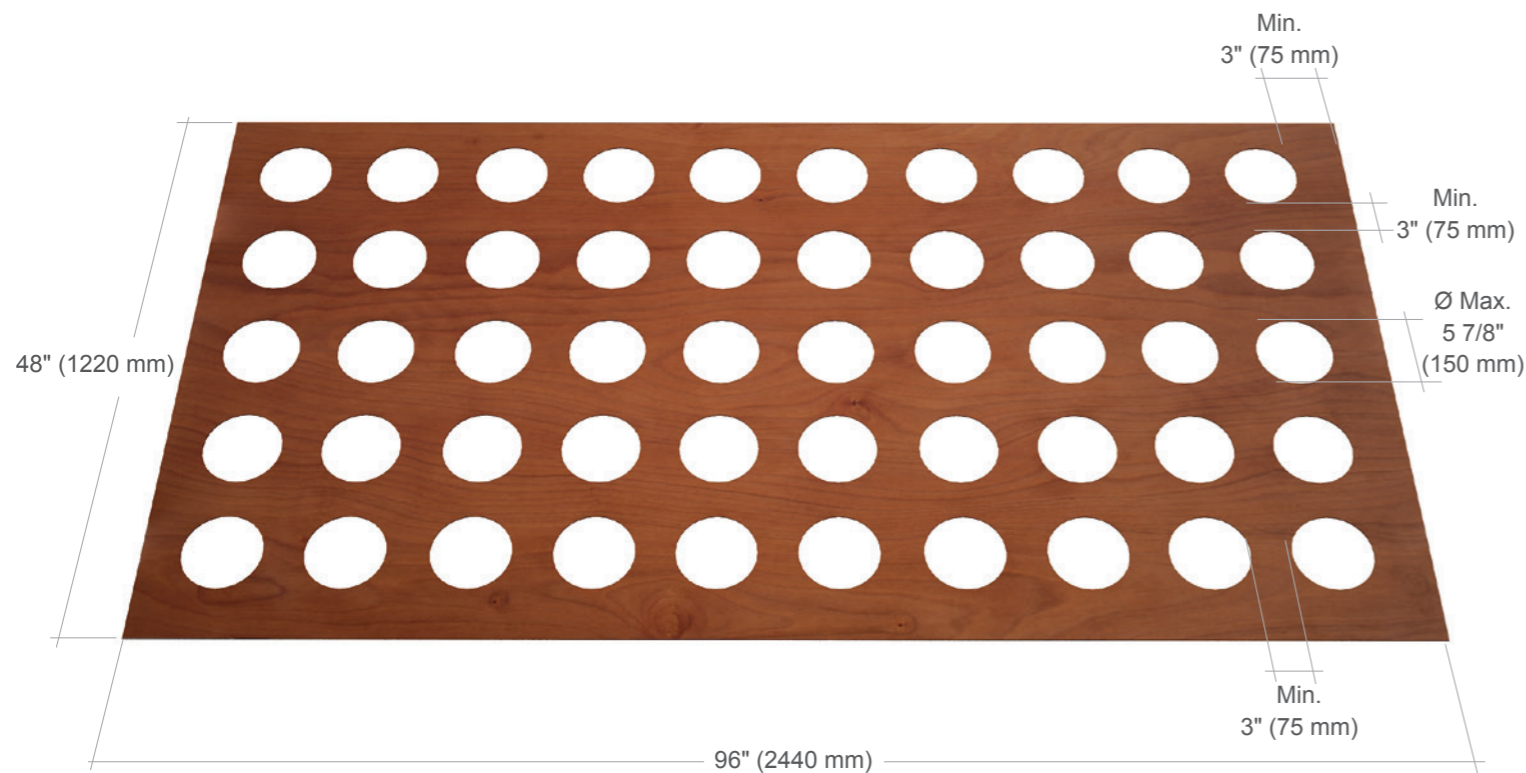
1.4.3 PERFORATION RECOMMENDATIONS

There are a series of limitations and requirements to consider when fabricating **PRODEX** panels for use on exteriors.

It is important to note that every perforation increases the percentage of exposed edges to UV and moisture conditions. This makes the panel more vulnerable, so we recommend the following parameters to ensure the panel's stability.

1. The fabrication must be performed by a professional using the appropriate tools.
2. If the percentage of the perforation pattern is > 20%, contact **Prodema** for recommendations.
3. All types of perforation patterns will require a solid 3" (75 mm) border along the perimeter of the panel.
4. The distance between perforations must never be less than 3" (75 mm).
5. If the fabrication consists of perforations, the maximum diameter of each may not be greater than 5 7/8" (150 mm).
6. The maximum panel openness must not exceed 30%.

When the panel requires custom fabrication as herein described, the consent of the **Prodema** technical department must be obtained.



Cracks Due to Stress

If the panel needs to be perforated for aesthetic or functional reasons (ventilation outlets, installation of signage, lighting, etc.) it is very important to follow the recommendations below to avoid cracking of the panel due to excessive stresses.

OPENINGS, GROOVES, ETC.:

If you need to cut openings, grooves, etc., it is very important to avoid leaving sharp edges. The corners on openings should be softened by cutting the largest possible radius, a minimum of 5mm.



GROOVES ON THE EDGE:

It is likely that on some occasions, and always with the approval of the **Prodema** Technical Department, machining will be required to add a groove on the edge of the **PRODEX** panels (for a Clapboard facade installation for example). In these cases, it is also very important to avoid sharp edges and attempt to maximize their size, with the recommended minimum being 1/16" (1mm).



2 INSTALLATION OF THE PRODUCT

2.1 GENERAL CONCEPTS

2.1.1 VENTILATED FAÇADES

Did you know that... the use of a ventilated façade is essential for the assembly of **PRODEX** panels?

To ensure the good performance of this type of panel, it is very important that the differences in humidity and temperature between both faces are minimal. The ventilated facade has several advantages over a conventional façade:

• Watertight to rain

The ventilated façade provides better water-tightness in the rain and stops the water from penetrating into the air chamber.

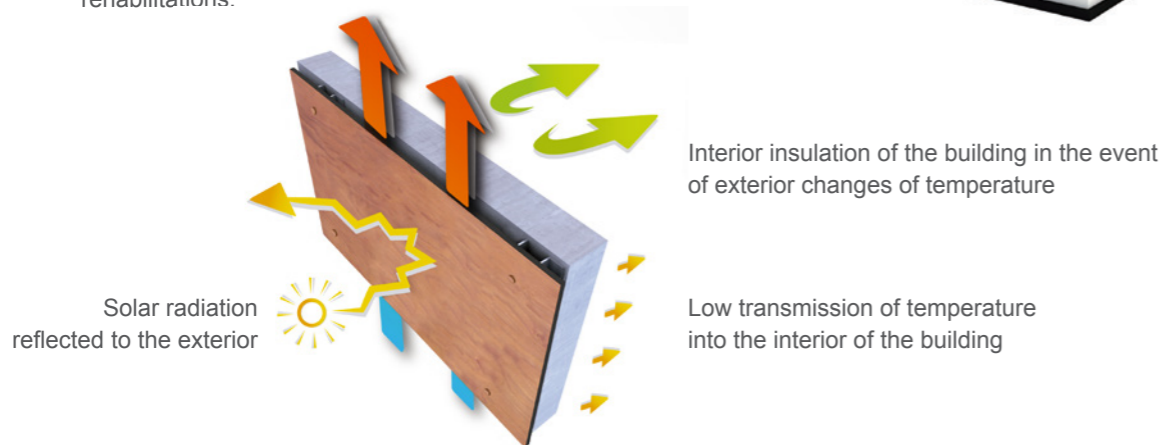
- It offers a good diffusion of water vapor from within the building to the exterior.
- The ventilated façade generates a constant ventilation of air and prevents there being any stagnation of humidity or the insulation from becoming damp.
- Reduces thermal bridges to a minimum.

• Improved acoustic insulation

• Thermal insulation

Generates an energy saving of up to 50%* by absorbing less heat in summer and dispersing less heat in winter.

- Easy assembly and disassembly and a good solution for rehabilitations.



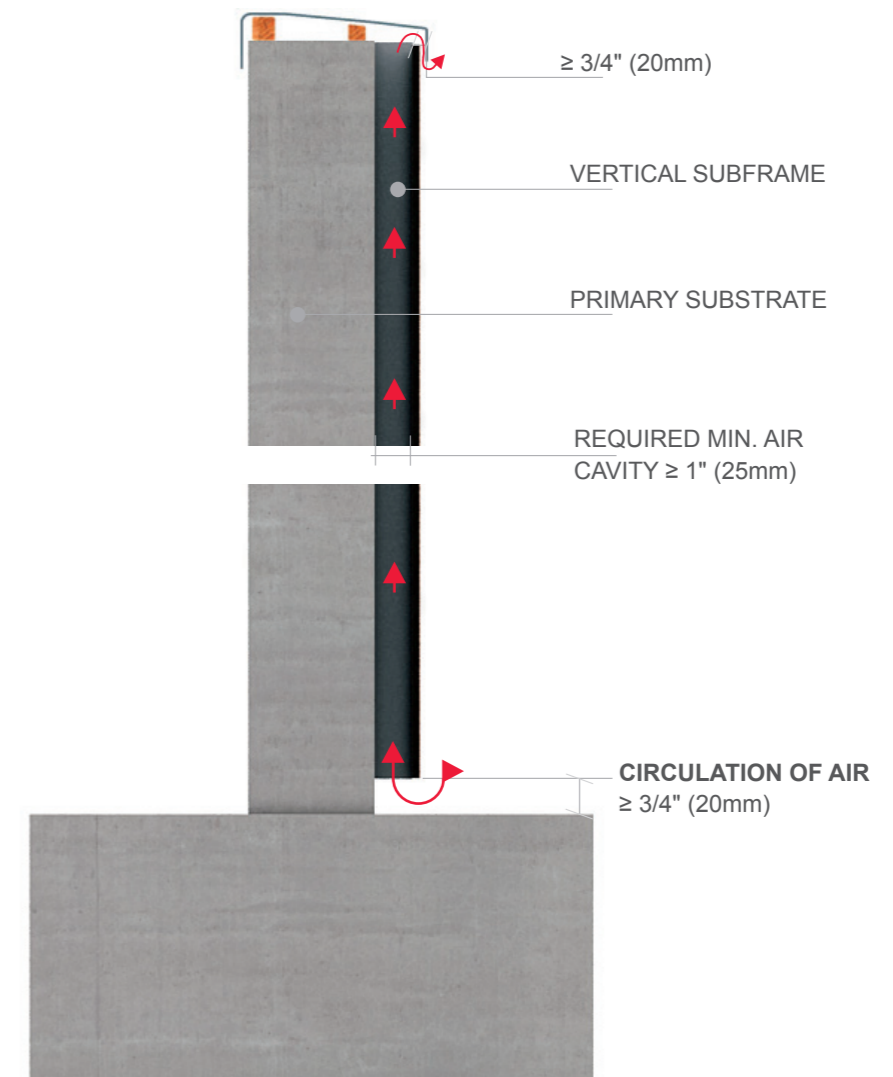
In the summer, or during hot spells, the sun shines on the **PRODEX** panels instead of on the building. This solar radiation heats the air in the air chamber generating a "chimney" effect due to the change in its density. This generated ventilation avoids the accumulation of heat on the façade, which together with the thermal insulation are the perfect combination to protect the building for atmospheric agents

In winter, or during cold spells, the ventilated façade acts as a heat accumulator, given that the air chamber assists in the thermal stability of the system. This ventilated façade construction system together with the thermal insulation prevents the loss of heat of the building.

Did you know that... a ventilated facade requires unobstructed, continuous air flow for proper performance?

- The air flow cavity behind the panel must be a minimum of 1" (25mm).
- Leave a minimum opening of 3/4" (20mm) at the top and bottom part of the façade, as well as at door and window openings. This is critical to ensure required air flow .
- The subframing used to create the air flow cavity must be installed in a vertical direction. If conditions require horizontal channels, the percentage of openness is directly related to the channel depth. Perforations must allow 3/4" (20mm) minimum air flow.

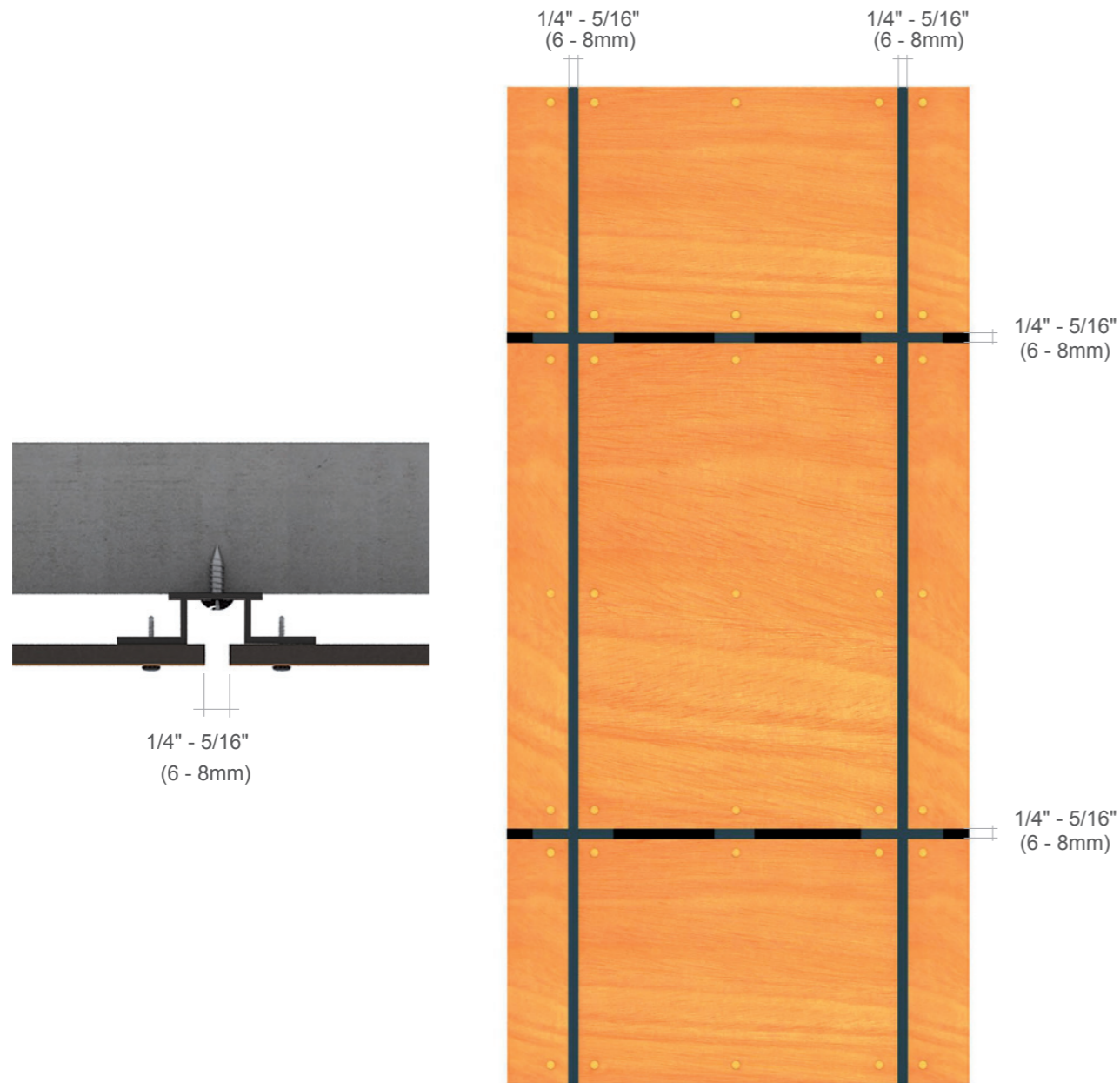
EXAMPLES:



* Depending on which direction the building faces, the insulation used and the numbers of doors, windows, etc.

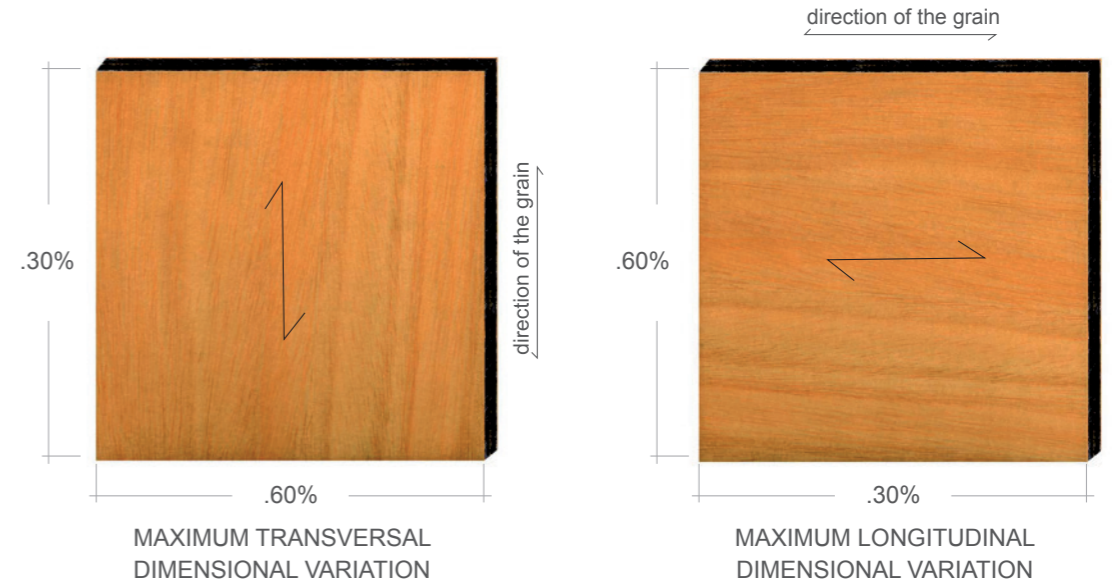
2.1.2 EXPANSION JOINTS

A 1/4" - 5/16" (6 - 8mm) expansion joint between panels is required. The joint allows the **PRODEX** panels to expand and contract as the material reacts to fluctuating temperature and humidity conditions.



2.1.3 DIMENSIONAL STABILITY

PRODEX is finished with a natural wood veneer and will experience dimensional changes due to temperature and humidity fluctuations. The maximum dimensional variation in a longitudinal direction is 0.30% and 0.60% in a transversal direction. These small dimensional variations do not affect either the aesthetics or the performance of the panels. Therefore it is very important to take into account the expansion joints indicated by **Prodema**.



PRODEX is resistant to vapor, water, snow and ice. However, we do not recommend submerging panels permanently or for extended periods of time in any of these conditions as a darker color may appear along the edges of the panel surface.

2.1.4 SUBFRAMING OPTIONS

PRODEX panels require a ventilated air cavity for their proper performance. The subframe used to create this air cavity must be installed vertically and fastened to the substrate with fastening elements compatible with the materials used.

The subframing system must comply with local wind-load and building code requirements and must be protected against corrosion, regardless of the material or type of installation.

Metal Subframe

In rainy or humid areas it is advisable to use a galvanized steel or aluminum metal subframe. In coastal areas, we recommend using a stainless steel or anodized aluminium subframe.

CMU - Concrete Wall



Stud - Wall



Wood Subframe

This type of subframe requires treated wood. A PVC or closed cell polyethylene foam seal is required between the batten and backside of panel to act as a moisture barrier.

If needed, the generic bracket can be used to resolve irregularities in surface alignments.



2.1.5 MINIMUM SUPPORTS PER PANEL

EXPOSED FASTENING

A minimum of 3 supports are required per the diagram, unless the panel width, vertical or horizontal, is $\leq 12"$ (305mm) for exposed.

Note: Ensure that the backside of the panel is supported by the widest surface area of subframe element.



INTERMEDIATE SUPPORT REQUIRED (only 2 rows of fasteners along edge of panel)



INTERMEDIATE SUPPORT REQUIRED (only 2 rows of fasteners along edge of panel)

EXCEPTIONS

When the panel width falls within the specified dimensions (per diagram), only two support points are required.



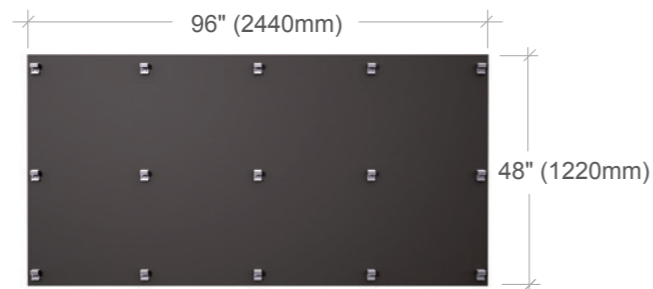
EXCEPTIONS

When the panel width falls within the specified dimensions (per diagram), only two hooks in that direction are required.



CONCEALED FASTENING

A minimum of 3 supports are required per the diagram, unless the panel width, vertical or horizontal, is 16" (305mm) for concealed.



3 rows of hanging hook required



3 rows of hanging hook required

2.1.6 TONGUE AND GROOVE AND COUNTERSUNK SCREWS

Prodema does not allow installing tongue and groove panels for exterior façades. This system is fastened using countersunk screws that prevent the panels from moving, and furthermore, they are only screwed in around the perimeter of the female joint and not the male; which is insufficient for the proper functioning of the **PRODEX** panels according to our recommendations.



2.2 INSTALLATION SYSTEMS

2.2.1 PR-CF40: CONCEALED SLAT SYSTEM

This system is designed to quickly and easily install PRODEX panels using 5/16" (8mm) thick pre-fabricated slats, for concealed fastening using special clips.



INSTALLATION OF THE SUBFRAME

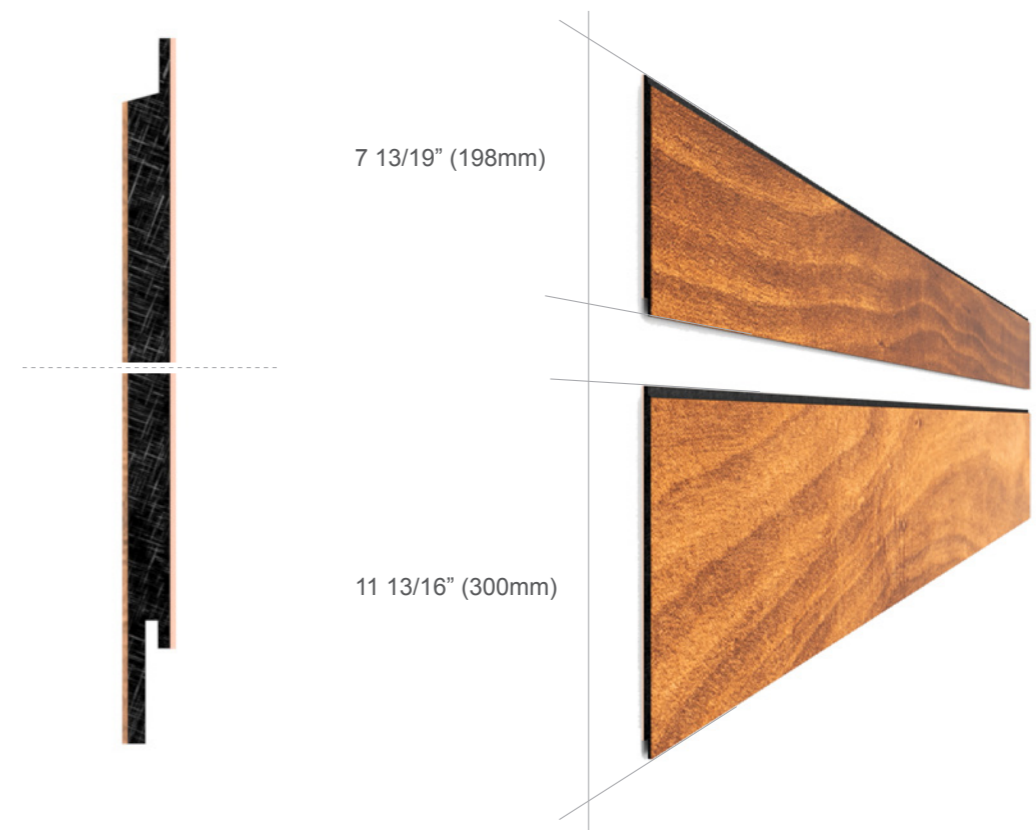
This system can be installed over a vertical metal or wood subframe (Refer to section 3.1.4.).

For panels measuring 96" (2440 mm) long, the batten must be a minimum of 2" (51mm) wide. The horizontal distance between battens must not exceed 24" (610mm). Each panel must be supported by a minimum of three vertical battens.



INSTALLATION OF PRODEX SLATS

PRODEX slats are factory machined and in two standard widths: 7 13/19" (198mm) and 11 13/16" (300mm).



• 7 13/19" (198mm) PRODEX SLATS PATTERN

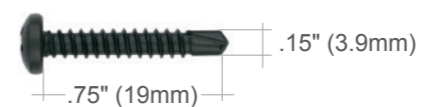


• 11 13/16" (300mm) PRODEX SLATS PATTERN



1 To start, install the clips that will support the first row of slats. These aluminum clips are designed for use with our recommended DIN7504N M3.5 screws for aluminium battens or DIN7505B M3.5 for timber battens.

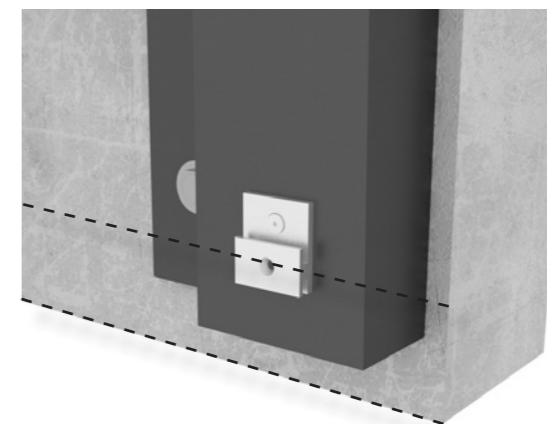
FOR ALUMINIUM BATTENS:
DIN 7504 N
(black zinc)



FOR TIMBER BATTENS:
DIN 7505 B
(black zinc)



The clips are fastened to the battens, starting at the bottom of the elevation. The clips hold the panels in place, therefore it is crucial to perfectly align them at the start of the installation.



2 After the first row of clips are fixed, install the PRODEX slat. The slats are supplied with a base groove designed to perfectly fit over the clip.

As all ventilated façades, a minimum gap of 1" (25.4mm) is needed along the base of the façade to allow the rear of the PRODEX panels to be in equilibrium with face.



- 3 Install the next row of clips. It is ESSENTIAL to leave a 1 mm gap between these clips and the slat below, to allow the natural expansion and contraction movements of the panel. Please carefully study the images below.

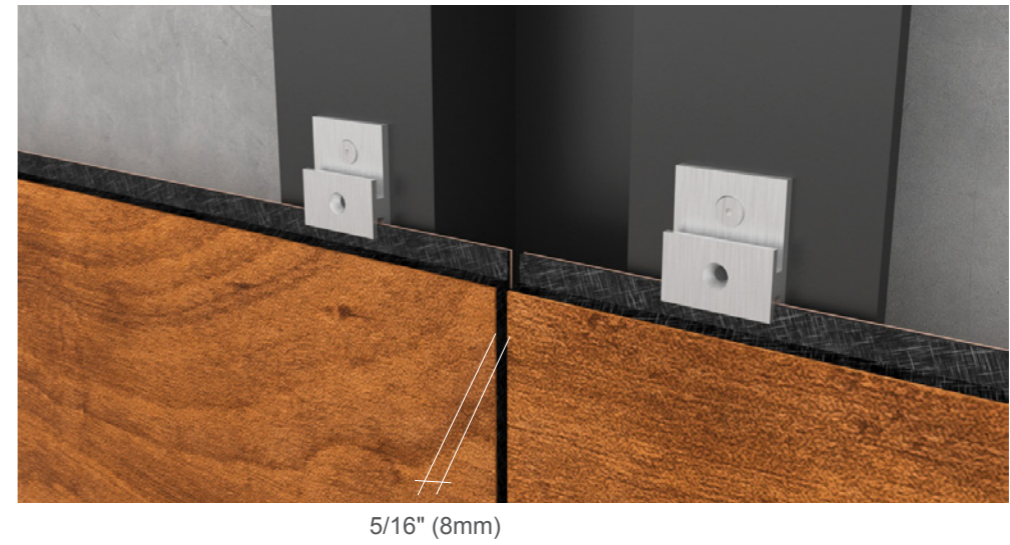
As part of the system we supply gap measuring tools, which must be inserted whilst positioning the clips.



- 4 For fixing and controlling longitudinal expansion and contraction after the PRODEX slat is installed, drill a hole in the central point of the slat through the tongue and insert a nail for timber battens or a fixing screw with aluminium.



A 5/16" (8mm) expansion joint between slats is required. This joint allows the PRODEX slats to expand and contract as the material reacts to fluctuating temperature and humidity conditions. The joint is created using two clips fixed to one vertical batten, therefore no clips are visible at the joint. We recommend that the vertical batten is finished in black.



- 5 Continue installing the next row of PRODEX slats, as previously explained.



This system leaves a closed joint between slats of 1/4" (6mm).

- 6 To finish, the top row of panels is fastened to each batten using standard colour-coded Prodema screws with a washer or spacer in order to assure the total planimetry of the façade.

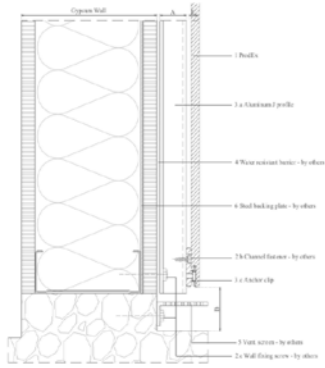
Alternatively, the slats can be bonded to the substructure, ensuring the gap of 3/16" (4mm) created by the clip is maintained using a suitable elastic adhesive.



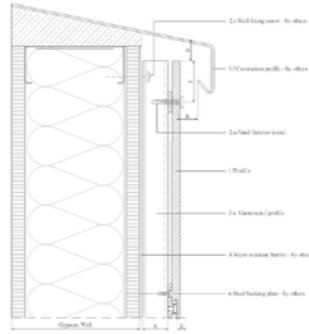
2.3 INSTALLATION DETAILS

2.3.1 CONCEALED SLAT SYSTEM

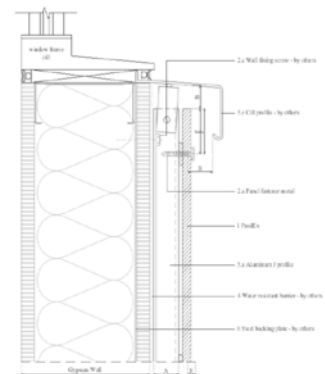
Base Detail



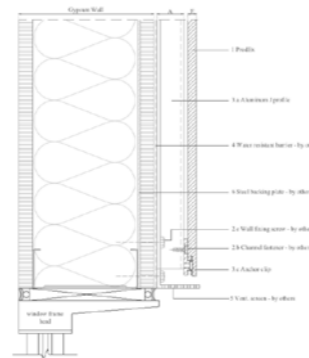
Head Detail



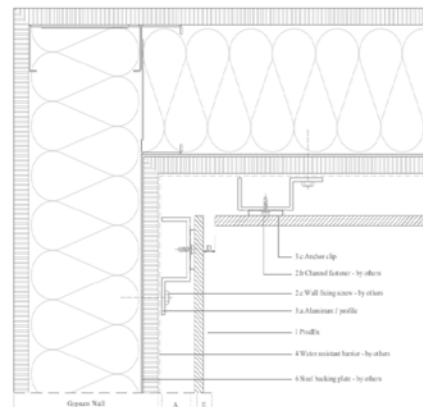
Window Sill



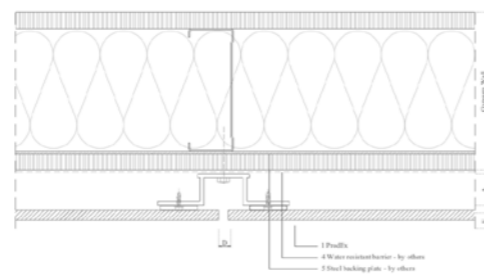
Window Head



Inside Corner



Vertical Joint



3 POST-INSTALLATION

3.1 REMOVING THE PROTECTIVE SURFACE

The **PRODEX** panels are protected by a special film on the finished side. The protective film, applied at the factory must be removed from the panel surface as soon as the product has been installed. Never try to remove the film from the reverse side as this is not a protective film and is necessary for the stability of the panel.

Never leave an installed panel, or one exposed to the elements, with its protective film in place for more than 2–3 hours. This will prevent the film from leaving residue on the panel surface and avoid having to remove it using special products. It will also prevent the panel from warping.



3.2 CLEANING

- It is difficult for dirt to adhere to the **PRODEX** panel surface.
- If the surface becomes dirty or there are remains of the protective film adhesive, this can be cleaned with lukewarm water mixed with a liquid detergent using a soft cloth. Do not rub the surface when dry.
- Never use abrasive detergents.
- In the case of more resistant grime, the panel surface may be cleaned with a soft cloth (un-dyed) dampened with benzene-free petroleum ether (104°-140° F, 40-60°C, light naphtha).
- Never use cloths or sponges with abrasive cleaning or sanding products, as this may damage the surface of the product.
- Nor should aggressive solvents such as acetone, ethyl acetate, MEC, nail polish, etc., be used, as these may cause permanent damage by partially or completely dissolving the protective film surface or cause cracks, which may not be evident at first glance. These products must not be used on the reverse face of the panels either.
- Surface drying is best performed using an absorbent, lint-free cloth.



- It is recommended to perform a cleaning test on a small area of the material for the purpose of verifying the efficacy of the procedure, and only then proceed with the remainder of the surface.
- There is no method for repairing scratched or dented panels.
- The use of solvents or chemical cleaning products must always be done according to the corresponding health and safety rules.

3.3 MAINTENANCE

- **PRODEX** panels do not require maintenance. In the case of dirt, refer to the Cleaning section.

3.4 REPAIR

- Natural wood is a delicate material. There is no prescribed repair method for **PRODEX** panels. Damaged panels must be replaced with new ones.

4 REMOVAL INFORMATION

4.1 REMOVAL

- The **PRODEX** product forms part of a ventilated facade system, the main components of which (aluminum, steel, wood and plastic) are easily separable and recyclable.

4.2 WASTE MANAGEMENT

- Reuse: reuse of the **PRODEX** panel for other applications with different requirements is encouraged.
- Recycling: the cellulose fibers of the core and the thermostable wooden sheet can be recycled. Recycling possibilities include its use for filler material for wood-based panels for construction use.

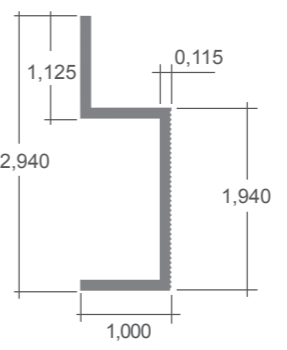
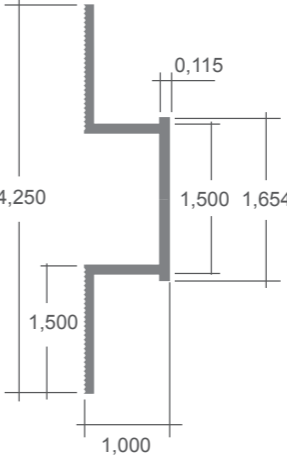
Dumping at landfill sites: the specifications that regulate and manage construction and demolition waste shall be followed, as well as any applicable local regulations. Disposal in industrial incinerators can also be considered.

- Sub-construction: the wood, aluminum or steel profiles may be reused for their original use, or recycled if the buildings have been carefully deconstructed.

5 ACCESSORIES




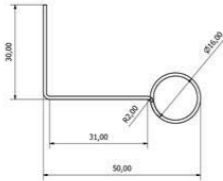

5.1 ELEMENTS FOR THE EXPOSED FASTENING SYSTEM

5.1.1 SUBFRAME

REFERENCE	DESCRIPTION	MATERIAL / FINISH
PRAS005AND		J - Channel 10' (3048mm) long Aluminum / Black lacquered
PRAS006AND		HAT - Channel 10' (3048mm) long Aluminum / Black lacquered

5.2 SPECIFIC ELEMENTS FOR THE SLAT SYSTEM

5.2.1 GENERAL ACCESSORIES FOR THE SLAT SYSTEM

REFERENCE	DESCRIPTION	MATERIAL / FINISH
PRSS001		Aluminium 6063 Rough T5
PRSS002		Stainless Steel
PRSS003		Stainless Steel
PRSS004		Galvanized Steel
PRSS005		Stainless Steel

Prodema

NATURAL WOOD BEAUTY

www.prodema.com



TECHNICAL CATALOG

Prodema Natural Wood, S.L. | Barrio San Miguel, s/n 20.250 Legorreta - Gipuzkoa (España) | (t) +34 943 807 000 (f) +34 943 807 130 | prodema@prodema.com

Prodema USA, Inc. | 3550 Biscayne Boulevard, Suite 610 | Miami, FL, 33137 | Phone: (305) 982-8555 | prodemausa@prodema.com

MATERIAL

THICKNESS:

SURFACE FINISH:

PRODEX / PRODEX IGN

1/4" - 7/8"v(in) ⁽¹⁾

SMOOTH:

TESTS

RESULTS

PROPERTY OR ATTRIBUTE

MESURE UNIT

STANDARD

1. INSPECTION

Colour,pattern and surface finish

Due to the fact that wood is a natural product, each veneer may be considered as unique. Colour and structure differences are considered as normal. Singularities such as knots and resin inclusions are not considered as defects, but as a part of the decor. There are differences in light fastness performances depending on the wood species and the source of the wood.

EN 436-8 Part. 5.2.2.3

2. DIMENSIONAL TOLERANCES

Thickness (t) ⁽¹⁾

0.0157
0.0197
0.0236
0.0275
0.0315

1/4" ≤ t ≤ 5/16"
5/16" ≤ t ≤ 1/2"
1/2" ≤ t ≤ 5/8"
5/8" ≤ t ≤ 3/4"
3/4" ≤ t ≤ 7/8"

in

EN 438-2 Part 5

Flatness ⁽²⁾

0.050
0.036

1/4" ≤ t < 3/8"
3/8" ≤ t

in/ft

EN 438-2 Part 9

Length and width

+ 0.3937 / -0

in

EN 438-2 Part6

Edge straightness

0.018

Maximum deviaton

in/ft

EN 438-2 Part 7

Edge squareness

0.018

Maximum deviaton

in/ft

EN 438-2 Part 8

3. PHYSICAL PROPERTIES

Bond Strenght

60

Strength of failiure

psi

ASTM C297 -94

Flexural Modulus

> 1,800,000
> 1,500,000

Machine Direction
Cross Direction

psi

ASTM D1037-99

Flexural Strenght (MOR)

> 15,000
> 9,000

Machine Direction
Cross Direction

psi

ASTM D1037-99

Freeze- Thaw Resistance

No visible change

Appearance

ICC-ES AC92
Section 3.2.2

Water Resistance

**No sign of any
visual**

Appearance

ASTM D2247-11

4. WEATHER RESISTANCE

Resistance to artificial weathering

No visible change

Appearance

ASTM G155
(2000 hours)

Salt Spray Exposure

**No sign of any
visual**

Appearance

ASTM B117-11
(300 hours)

5. CE SAFETY REQUIREMENTS

Reaction to fire

A
B

Prodex IGN classification
Prodex classification

ASTM E84-10b

(1) Prodex IGN available from 5/16 inches.

(2) Provided that the laminates are stored in the manner and conditions recommended by the manufacturer.