

DUBLIN VILLAGE
BUILDING 'A' WEST ELEVATION
EIFS
2/2/2021



OUTSULATION® SOLUTIONS FROM DRYVIT



Office Buildings
Salt Lake City, UT



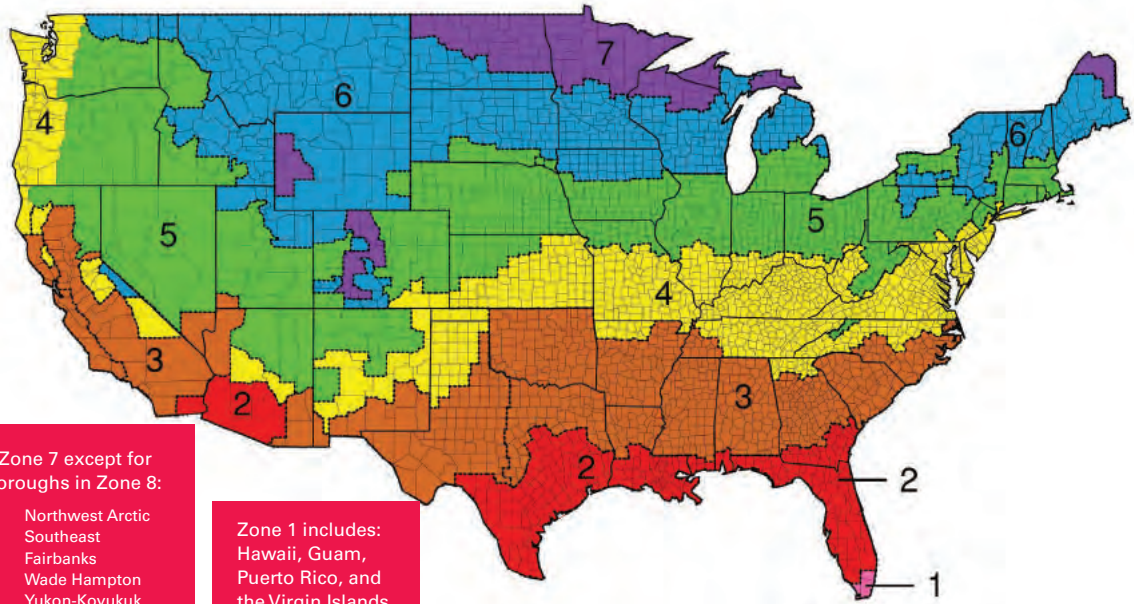
Liberty Center
Columbus, OH

WELCOME TO OUTSULATION, BY DRYVIT.

As the name suggests, Outsulation systems place insulation on the outside of the building, and are the most effective solution for meeting today's energy code requirements for continuous insulation (CI).

But there is much more to Outsulation than CI alone. Outsulation systems deliver the latest in building science solutions for building envelopes, resulting in operational energy efficient, cost effective construction, low maintenance, low embodied energy building solution. Outsulation delivers:

- Engineered moisture drainage for incidental moisture
- Air & water resistive barrier membrane
- Anti-crack, impact resistant scrim
- High R-value with continuous insulation
- Durable and seamless finish veneer that provides a range of aesthetically appealing results



All of Alaska in Zone 7 except for the following Boroughs in Zone 8:

Bethel	Northwest Arctic
Dellingham	Southeast
Fairbanks N. Star	Fairbanks
Nome	Wade Hampton
North Slope	Yukon-Koyukuk

Zone 1 includes: Hawaii, Guam, Puerto Rico, and the Virgin Islands.

ENERGY CODES AND CI REQUIREMENTS

The Department of Energy (DOE) has mandated that all states comply with the ASHRAE 90.1-2010 design standard by September 26, 2016, which requires the use of continuous insulation (CI) on commercial buildings in over 90 percent of the United States. Other design standards and codes — such as ASHRAE 189.1, IECC 2012, IgCC 2012; Title 24, (Section 6) and CALGreen — will also require the use of CI, as well as air barriers, as they become adopted. The bottom line is that nearly all new commercial projects in the U.S. will soon require the use of an air barrier and CI as an integral part of exterior wall construction.

CI is much more efficient than the use of insulation in the wall cavity, and 2 inches of CI can have the effective R-value of 8 inches of cavity (batt type) insulation! As such, consider eliminating the use of cavity insulation altogether by using the right amount of CI to meet your total exterior wall insulation goals. An empty wall cavity improves airflow and reduces the dirt and moisture retention associated with batt insulation.

Rigid insulation, such as Expanded Polystyrene (EPS), can also be easily cut and shaped to provide dramatic architectural details and design effects, such as reveals, quoins, cornices and trim, that are much more difficult and expensive to achieve with heavier materials. Using an Outsulation system to combine the design flexibility and CI benefits of EPS is unique and extremely cost-effective.



Ronald McDonald House
Salt Lake City, UT



**Sarkis & Siran Gabrellian
Child Care Learning Center**
Hackensack, NJ

SYSTEM OPTIONS:

All Outsulation systems include adhesive, continuous insulation (CI), fiberglass mesh embedded in base coat, and finish, which are installed sequentially by a trained professional contractor as specified by the design team, and as required by code. Some Outsulation systems protect the underlying wall with an air- and water-resistive barrier under the CI, which maximizes the energy efficiency. Outsulation systems can be installed in either “barrier,” “moisture drainage” or “pressure equalized” configurations, and these systems are engineered to perform in all climates and on all types of structures. On certain types of construction (high-rise) and in certain job conditions (cold weather), lift-in-place, prefabricated wall sections may provide certain benefits.

HOW IT WORKS

Outsulation systems typically consist of the following components, as determined by code and performance requirements.

DRYVIT/TREMCO APPROVED WATER-RESISTIVE BARRIER:

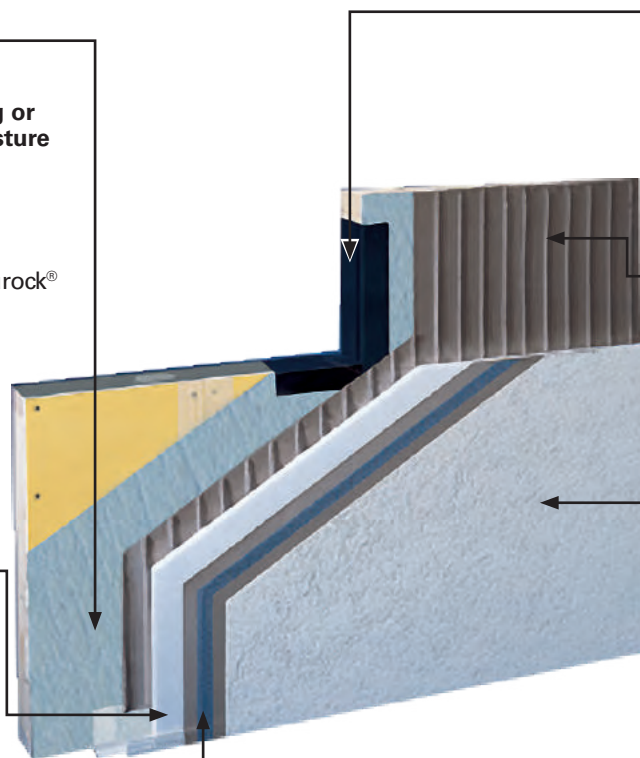
Seamlessly protects sheathing or substrate from incidental moisture and eliminates air infiltration

- Liquid applied
- Continuous or monolithic
- Includes Backstop NT®, Securock® ExoAir® 430

CONTINUOUS INSULATION:

Absorbs expected building movement and enhances energy efficiency

- Eliminates thermal bridging in framed construction
- Meets CI requirements for all zones per ASHRAE 90.1-2010
- Available in both EPS (expanded polystyrene) and XPS (extruded polystyrene)
- Available in various thicknesses and can fully meet wall insulation requirements



DRYVIT/TREMCO APPROVED FLASHING SYSTEM:

Seamlessly protects openings in the building envelope from moisture

- Includes AquaFlash® or Dymonic® 100

ADHESIVE / DRAINAGE MEDIUM:

Vertical notches allow drainage of incidental moisture

- Adheres insulation board to the Air-and Water-Resistive Barrier

FINISH COAT:

Blend of 100 percent acrylic copolymers, natural aggregates and UV resistant pigments

- Easy to maintain
- Available in many textures and limitless color options
- Offer multiple aesthetic options
- Options for increased hydrophobicity, flexibility and mildew and fade resistance

BASE COAT AND REINFORCING MESH:

Combine to provide the primary weather barrier and impact resistance

- Mesh embedded in base coat
- Various weights of mesh available, depending on impact resistance required

SUSTAINABLE SOLUTIONS:

Outsulation systems have been evaluated by the National Institute for Standards and Technology (NIST) and have less environmental impact than other common claddings. They can also contribute toward achieving LEED credits, depending upon project design and location.

Outsulation systems are more cost-effective throughout their lifecycle because the manufacturing process requires less energy than other common claddings, and the lightweight composition reduces fuel costs associated with transport. After application, Outsulation systems continue to keep heating and cooling costs low for the life of the building. Visit dryvit.com for more information.

All Dryvit North American manufacturing facilities are ISO 9001:2008 and ISO 14001:2004 certified.

OUTSULATION

- Intended for use in commercial construction or over masonry
- Insulation adhered directly to substrate
- Designed as a barrier system

OUTSULATION PLUS MD SYSTEM

- Qualifies for all construction types
- Incorporates a liquid-applied, air- and water-resistive barrier
- Vertical adhesive beads facilitate moisture drainage
- Corrugated strip or track is incorporated at the base of the wall
- Passive drainage

OUTSULATION MD SYSTEM

- Qualifies for all construction types
- Incorporates a liquid-applied, air- and water-resistive barrier
- Grooved insulation board facilitates moisture drainage
- Vent track and vent assembly are incorporated at the base of the wall
- Engineered drainage

OUTSULATION HDCI™

- Provides a 20-year warranty on puncture resistance
- Incorporates a liquid-applied, air- and water-resistive barrier
- Corrugated strip or track is incorporated at the base of the wall
- Qualifies for commercial construction
- Provides a 20-year warranty on puncture resistance
- Passive drainage

OUTSULATION X™ SYSTEM

- Features DOW® XNERGY™ Extruded Polystyrene (XPS) insulation board
- Incorporates a liquid-applied, air- and water-resistive barrier
- Vertical adhesive beads facilitate moisture drainage
- Drainage strip is incorporated at the base of the wall
- Qualifies for all construction types
- Supplemental fasteners required
- Passive drainage

OUTSULATION LCMD SYSTEM

- Qualifies for all construction types
- Mechanically fastened over sheet type water-resistive barriers (by others)
- Corrugated strip or track incorporated at the base of the wall
- Multiple drainage and attachment options available

OUTSULATION PE SYSTEM

- Qualifies for all construction types
- Incorporates a liquid-applied, air- and water-resistive barrier
- Closure blocks are configured to “compartmentalize” the wall for pressure equalization
- Vent track and vent assembly are incorporated at the base of the wall
- Engineered moisture drainage and pressure equalization

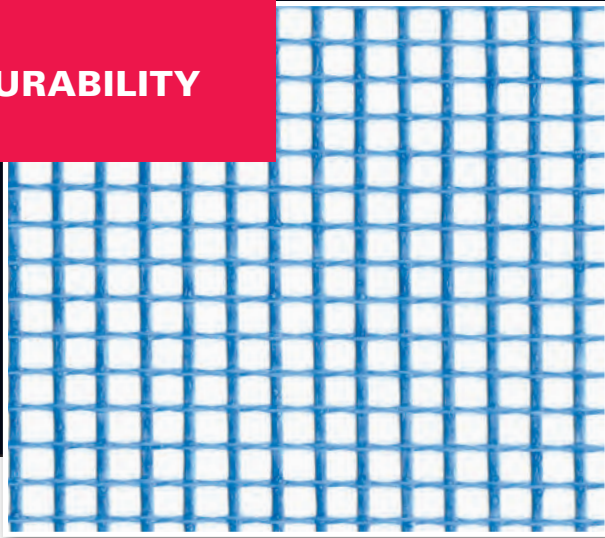
OUTSULATION RMD SYSTEM

- Intended for residential, wood framed (one and two family) construction
- Can incorporate a liquid applied air- and water-resistive barrier or sheet membrane and drainage mat
- Drainage strips or track incorporated at the base of the wall
- Multiple drainage and attachment options available

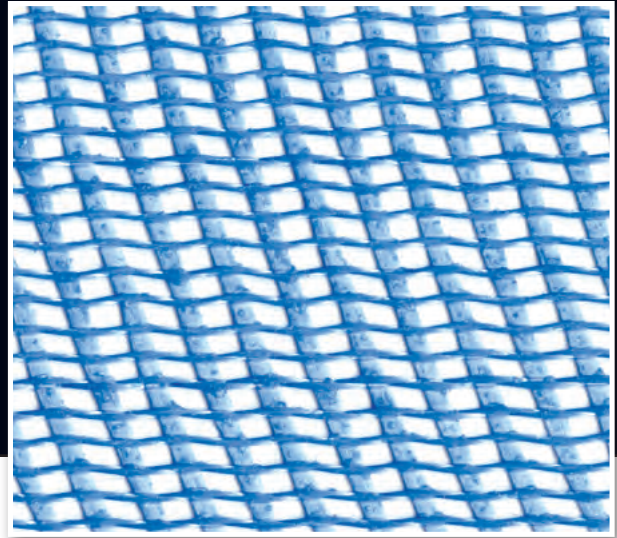
OUTSULATION SYSTEMS WITH SE430

- Outsulation MD Securock ExoAir 430
- Outsulation Plus MD Securock ExoAir 430
- Outsulation HDCI Securock ExoAir 430
- Outsulation PE Securock ExoAir 430
- Outsulation X Securock ExoAir 430

DURABILITY



Standard™ Mesh



Panzer® 20 Mesh

Provides 10 times (1000%)
better impact resistance than Standard™ Mesh!

DURABILITY

All Outsulation systems incorporate alkali and fire-resistant fiberglass mesh that is embedded into the base coat over the entire surface of the insulation board.

This combination provides the primary weather barrier, as well as tensile strength and impact resistance for the system, and these factors all play a critical role in protecting the physical integrity and beauty of the building exterior. The mesh is available in several weights and is specified according to the anticipated level of exposure to potentially damaging impact.

The heaviest and strongest — Panzer 20 Mesh — is intended for use at all ground floor locations and high-traffic areas such as balconies. Hurricane-prone regions may have building codes that require assemblies reinforced with Panzer Mesh. Panzer 20 is also the required mesh in Dryvit's Outsulation HDCI system, which comes with a 20-year puncture resistance warranty. Consult Dryvit's Engineering Department or your local Dryvit representative for more information on these circumstances.

DRYVIT REINFORCING MESH OPTIONS:

Standard™ Mesh: Recommended for normal-wear applications on the second story and above

Corner Mesh: Used to reinforce corners and recommended on all ground-floor applications

Intermediate™ Mesh: Recommended for medium-level traffic and impact requirements on the second story and above

Panzer® 20 Mesh: Recommended for all high-traffic areas

[back to top](#)



Dryvit has been the world leader in insulated exterior cladding system technology since 1969.

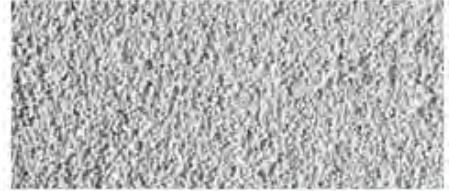
Texture and color are essential components of a building's character. Choosing these is a journey and this color chart is intended as the starting point. Each of the Dryvit integrally colored coatings or finishes can be manufactured in virtually any color you specify. A range of our most popular textures is shown below. If you don't see the texture or color you like, call your local Dryvit distributor. Most have state of the art, custom color matching equipment on site and they will be pleased to work with you to achieve the exact look you desire. For more information and the name of your nearest Dryvit distributor, call toll free at 1-800-556-7752 or [click here](#).



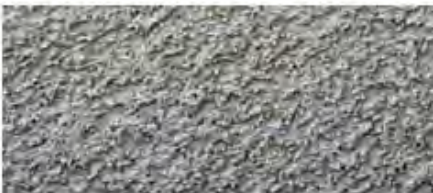
FREESTYLE® *



QUARZPUTZ®



SANDBLAST®



SANDPEBBLE®



SANDPEBBLE FINE®



LYMESTONE™ *

[back to top](#)

EIFS-1 - color match

SW 7048

Urbane Bronze

Interior / Exterior

Location Number: 245-C7





PROJECT HIGHLIGHTS:

MATERIAL SAVINGS

Outsulation Plus MD (using 4 inches of EPS) allowed the construction team to achieve the performance R-values required of the exterior wall, and eliminate the use of cavity insulation entirely. Substituting the 1.5-pound per square foot Outsulation Plus MD system for the 40-plus pounds per square foot masonry reduced the amount of concrete and structural steel needed to support the weight of the wall, and overall, 1.4 million pounds of materials — 96 percent of the original cladding weight — were eliminated from use!

LABOR SAVINGS

All components of the Outsulation Plus MD System were installed by a single trained subcontractor, simplifying the construction schedule.

CONSTRUCTION TIME SAVINGS

Using less structural material and a single contractor for the Outsulation Plus MD system reduced overall construction time by 15 weeks, which saved money and enabled the owner to move into his building ahead of schedule.

SINGLE WARRANTY

Outsulation systems are engineered, tested and fully-warranted by Dryvit, whereas a brick wall is composed of a variety of materials supplied by different manufacturers.

LEED CERTIFICATION

The Outsulation Plus MD system contributed to earning maximum EA category credits and LEED Gold certification.

ENERGY SAVINGS

Measured against the modeled performance of an identical structure built to meet local building and energy codes, this building was predicted to have an energy savings of 34.8 percent and an energy cost reduction of 42.8 percent annually. After one full year, the actual energy cost reduction was 52.6 percent — more than the modeled expectation!

By choosing Dryvit's Outsulation Plus MD system, the design and construction team were able to meet the owner's aesthetic and performance goals ahead of time, and under budget. With numerous challenges to overcome and ambitious goals to meet, Outsulation by Dryvit delivered measurable results above and beyond expectation, and will continue to do so for the lifetime of the building.

BUILDING ENERGY CODES ARE CHANGING.

The international movement to improve energy performance and lower environmental impact is dramatically affecting the way buildings must be designed and built, particularly with the requirements for air barriers and continuous insulation. Outsulation by Dryvit is a tested and proven solution to this challenge.

Best of all, with Outsulation systems, performance and aesthetics aren't mutually exclusive. The wide variety of finishes, textures and colors can make nearly any architectural vision a reality.

The benefits of Outsulation have been realized in hundreds of thousands of projects around the world, and the systems provide a single-source, seamless and sustainable cladding solution for buildings of any shape, size and type.

Simply put, Outsulation systems provide everything you need from a building code perspective, and everything you want from a performance and aesthetic standpoint.

Visit dryvit.com or call 800-556-7752 to learn more about Outsulation by Dryvit.



Dryvit Systems, Inc.
One Energy Way
West Warwick, RI 02893
401-822-4100
dryvit.com

Dryvit Systems, Inc and Tremco are a part of Tremco Construction Products Group.

Information contained in this brochure conforms to the standard detail recommendations and specifications for the installation of Dryvit Systems, Inc. products as of the date of publication of this document and is presented in good faith. Dryvit Systems, Inc. assumes no liability, expressed or implied, as to the architecture, engineering or workmanship of any product. To ensure that you are using the latest, most complete information, contact Dryvit Systems, Inc.

© Dryvit Systems, Inc. 2020
Printed in U.S.A. R1: 2-10-2020 2-20
10M DS266

Dublin Village
Building 'A' West Elevation
Storefront
2/2/2021

Delivering the Power of
POSSIBILITIES



ARCHITECTURAL WALL PANELS

Commercial Full Line Catalog



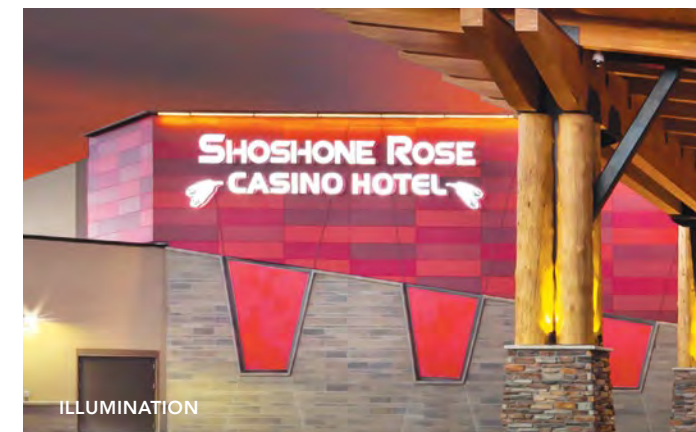
ILLUMINATION | VINTAGEWOOD | INDUSTRIALBLOCK

WE'RE LOOKING FORWARD.

At Nichiha, we think the future is bright.

Your projects come in all shapes, styles and markets. That's why Nichiha is dedicated to helping you build the perfect structure for you, clad in our Architectural Wall Panels.

We combine the aesthetic of your favorite building material with the uncompromising durability of fiber cement, giving you the look you want in considerably less time and for a fraction of the cost. Our expansive collection of textures includes metal, wood, block, stone and brick options in a full range of colors and finishes. Once you've used a Nichiha product, you'll see the difference — and want to use it again and again.



ILLUMINATION



ILLUMINATION | VINTAGEWOOD

8 | DESIGNER SERIES

10 | DIMENSION SERIES

12 | MODERN SERIES

14 | WOOD SERIES

18 | CONCRETE SERIES

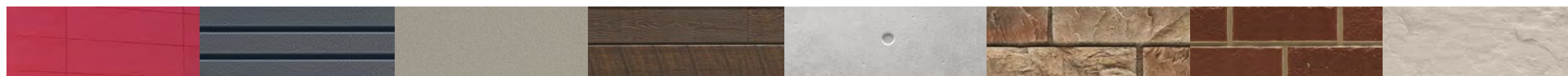
20 | KURASTONE™ SERIES

22 | BRICK SERIES

24 | MASONRY SERIES

26 | ESSENTIAL FLASHING

28 | INSTALLATION HARDWARE & TRIM

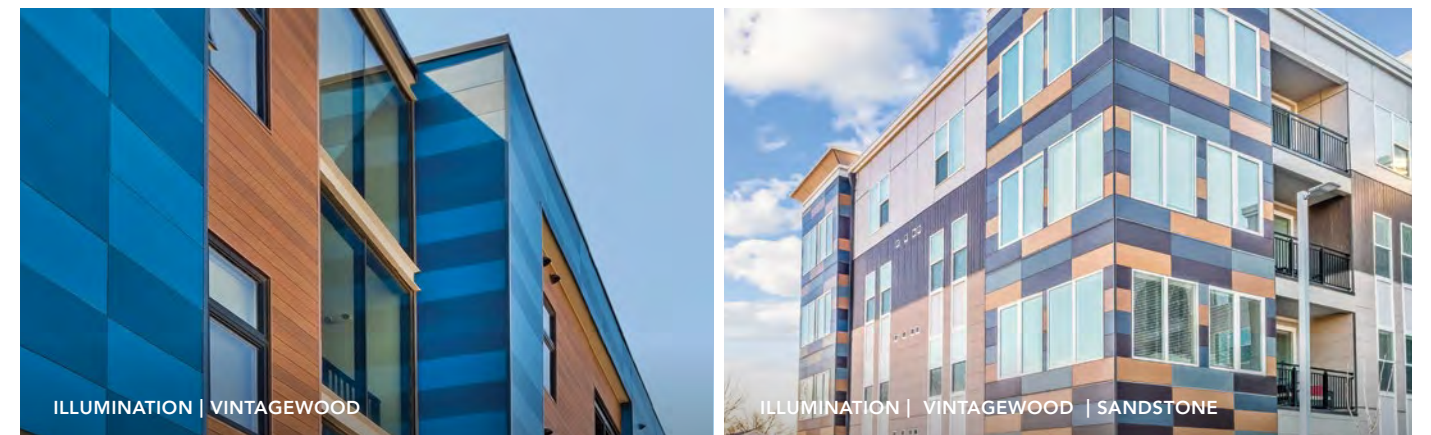




MULTIPLE LOOKS. ONE SOURCE.

Less time managing, more time imagining.

Why settle for one look when you can get multiple textures and finishes from a single manufacturer? With Nichiha Architectural Wall Panels, you can mix and match cladding styles to achieve the varied look you've been searching for. Whether you're looking for metal, stone, wood, concrete or brick, we have it all. Plus, all of our panel styles operate on the same clip installation system — saying goodbye to multiple contractors. You'll be able to move from conception to completion with ease, all while saving time and money.



USEFUL TIP

Add the finishing touches to your next project with our Essential Flashing on page 26.



Warm up your project with THE WOOD SERIES

Get the natural look of wood with unmatched durability.

With 10 varieties of style and color, the Wood Series is our largest and most popular product line. Built to last, our VintageWood,™ RoughSawn,™ and brand new RiftSawn™ panels offer the rich textures of wood while providing color stability and withstanding extreme weather elements.

VintageWood exudes modern refinement and works well in both modern and vintage designs. Available in five colors — Bark, Cedar, Redwood, Ash and Spruce — VintageWood continues to be a best seller in the hospitality and healthcare markets. It pairs perfectly with glass, metal and block panels, adding a touch of warmth to the coolness of these materials. And because VintageWood can be installed vertically or horizontally, it offers a wide range of design options.



VINTAGEWOOD SPECS

DIMENSIONS (ACTUAL MM)

THICKNESS (ACTUAL MM)

WEIGHT (LBS. PER PANEL)

WEIGHT (LBS. PER SQ. FT.)

EXPOSED COVERAGE (SQ. FT. PER PANEL)

PACKAGING (PIECES PER PACK)

AWP 1818

17-7/8" H x 71-9/16" L
(455MM H x 1818MM L)

5/8 (16MM)

34.8

3.9

8.88 SQ. FT.

2 [17.76 SQ. FT.]

 AWP 1818 CAN ONLY BE INSTALLED HORIZONTALLY.

AWP 3030

17-7/8" H x 119-5/16" L
(455MM H x 3030MM L)

5/8 (16MM)

57.3

3.8

14.81 SQ. FT.

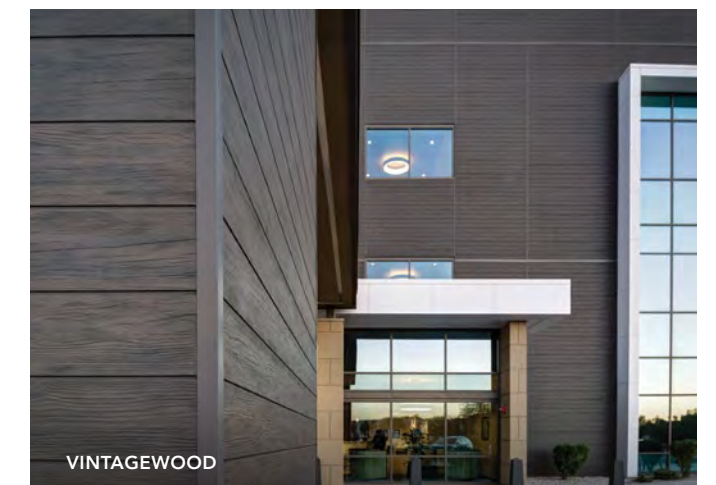
2 [29.62 SQ. FT.]

 AWP 3030 CAN BE INSTALLED HORIZONTALLY OR VERTICALLY.



VINTAGEWOOD TIP

Achieve the organic staggered look you love and take advantage of added design flexibility with our VintageWood 1818 panels, measuring nearly 6 feet in length. Contact your rep to learn more.





FILTER



Fiber Cement Siding Products & Colors

PRODUCTS

SORT BY



VINTAGEWOOD
CEDAR



VINTAGEWOOD
ASH



VINTAGEWOOD
BARK

This website uses cookies for analytics, personalised content and ads. By continuing to browse this site you agree to this use.

UNDERSTAND





VINTAGEWOOD
Redwood



VINTAGEWOOD
Spruce

This website uses cookies for analytics, personalised content and ads. By continuing to browse this site you agree to this use.

ESSENTIAL FLASHING

Create a clean, polished look for your building with the highest level of precision.



COMPRESSION JOINT FLASHING (10')

Used in conjunction with Ultimate Horizontal/Vertical Starter Tracks at floor joists in buildings that require compression joints. Can be painted or powder coated to match panels.

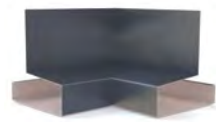
THICKNESS	10MM
PACKAGING (LN. FT. PER TUBE)	50



OVERHANG FLASHING (10') - JOH7288

Used at the base of overhangs, bump-outs or porte-cochères.

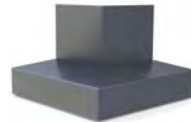
THICKNESS	10MM
PACKAGING (LN. FT. PER BOX)	40



OVERHANG FLASHING INSIDE CORNER - JOH7288D

Used in conjunction with Overhang Flashing at inside corners.

THICKNESS	10MM
PACKAGING (PCS PER PACK)	2



OVERHANG FLASHING OUTSIDE CORNER - JOH7288B

Used in conjunction with Overhang Flashing at outside corners.

THICKNESS	10MM
PACKAGING (PCS PER PACK)	2



OVERHANG FLASHING CLIP - JOH7288S

Placed at seams where Overhang Flashing and corners meet.

THICKNESS	10MM
PACKAGING (PCS PER PACK)	1



STARTER FLASHING (10') - FTD4788

Used in conjunction with the Ultimate Horizontal/Vertical Starter Tracks at the bottom of a building.

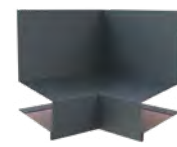
THICKNESS	10MM
PACKAGING (LN. FT. PER BOX)	50



STARTER FLASHING OUTSIDE CORNER - FTD4788B

Used in conjunction with Starter Flashing at outside corners.

THICKNESS	10MM
PACKAGING (PCS PER PACK)	4



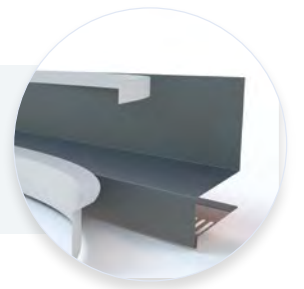
STARTER FLASHING INSIDE CORNER - FTD4788D

Used in conjunction with Starter Flashing at inside corners.

THICKNESS	10MM
PACKAGING (PCS PER PACK)	4

NOTES: EACH COMPONENT OF ESSENTIAL FLASHING IS SOLD SEPARATELY; STARTER AND OVERHANG FLASHING IS AVAILABLE IN BLACK ONLY.

Nichiha takes accessory protection to the next level with a **removable film layer**. Once installed, simply peel off the film to reveal blemish-free fixtures.



Our starter flashing serves a dual role — ensuring your project is polished to perfection and operating as a bug screen to keep annoying pests away.

INSTALLATION HARDWARE

Easily take your vision from the drawing board to reality.



ULTIMATE CLIP II WITH JOINT TAB ATTACHMENT - JEL778* & JEL788**

Creates a hidden fastening system that all but eliminates face fastening. The joint tab helps support panel lateral stability.

THICKNESS	10MM
PACKAGING (PCS PER BOX)	30



ULTIMATE HORIZONTAL STARTER TRACK (10') - FA700

Ensures a fast, level installation. Its patented drainage channel directs water out and away from the base of the wall.

THICKNESS	10MM
PACKAGING (LN. FT. PER BOX)	100



ULTIMATE VERTICAL STARTER TRACK (10') - FA710T

Ensures a fast, level installation with 3030 panels. Its patented drainage channel directs water out and away from the base of the wall.

THICKNESS	10MM
PACKAGING (LN. FT. PER BOX)	100



SINGLE FLANGE SEALANT BACKER (6.5') - FHK1015R

Used for vertical jambs at doors and windows and at inside corners of the building.

THICKNESS	10MM
PACKAGING (LN. FT. PER BOX)	65



DOUBLE FLANGE SEALANT BACKER (10') - FH1015R

Used for vertical expansion joints. Placed at the end of each 3030 panel, and every 30' with 1818 panels and with the preformed outside corner.

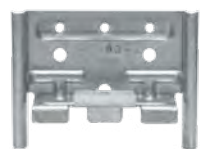
THICKNESS	10MM
PACKAGING (LN. FT. PER BOX)	100



CORRUGATED SHIM (4') - FS1005 & FS1010

Used for face fastening where required (top of building, doors, windows, etc.)

THICKNESS (FS1005)	5MM
THICKNESS (FS1010)	10MM
PACKAGING (LN. FT. PER BOX)	200



KURASTONE™ CLIP - JE720CA

Creates a hidden fastening system that all but eliminates face fastening for Kurastone panels and corners.

THICKNESS	10MM
PACKAGING (PCS PER PACK)	50



CORNER CLIP - JE777C* & JE787C**

Corner clip for the preformed Nichiha fiber cement corners.

THICKNESS	10MM
PACKAGING (PCS PER BOX)	6



CORNERS

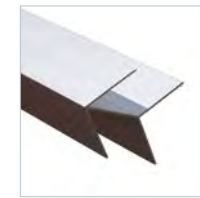
Prefinished corners are used in conjunction with horizontal panel installation.

17 7/8" H x 3-1/2" [face]
1818MM H x 88.9MM [face]

*JEL778 and JE777C are compatible with all panels except SandStone and VintageBrick.
**JEL788 and JE787C are compatible with SandStone and VintageBrick only.

METAL TRIM

With our customized metal trim, your project practically finishes itself.



CORNER KEY

Extrusion used at outside corners instead of a preformed corner. A vertical expansion joint is required 2' to 10' from the corner when using this corner.

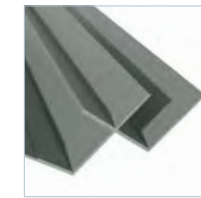
DIMENSIONS (NOM. FT. ~ ACTUAL MM)	3" x 10' (76.2MM x 3030MM)
PACKAGING (LN. FT. PER TUBE)	50



OPEN OUTSIDE CORNER

Extrusion used at outside corners instead of a preformed corner. A vertical expansion joint is required 2' to 12' from the corner when using this corner.

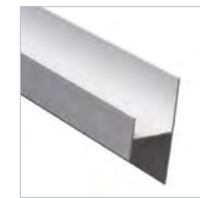
DIMENSIONS (NOM. FT. ~ ACTUAL MM)	2.96" x 10' (75MM x 3030MM)
PACKAGING (LN. FT. PER TUBE)	50



INSIDE CORNER

Used where two Nichiha panels meets in an inside corner; alternative to Single Flange Sealant Backer with sealant.

DIMENSIONS (NOM. FT. ~ ACTUAL MM)	3.4" x 10' (86.4MM x 3030MM)
PACKAGING (LN. FT. PER TUBE)	50



H-MOLD

Can be used at the end of 3030 panels instead of the Double Flange Sealant Backer, but not at the preformed outside corners.

DIMENSIONS (NOM. FT. ~ ACTUAL MM)	2" x 10' (50.8MM x 3030MM)
PACKAGING (LN. FT. PER TUBE)	50



J-MOLD

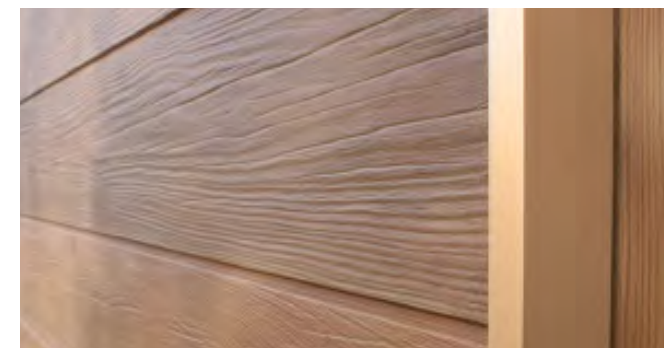
Can be used instead of Single Flange Sealant Backer at vertical jambs for doors and windows, but not at the inside corners of the building.

DIMENSIONS (NOM. FT. ~ ACTUAL MM)	0.375" x 10' (9.5MM x 3030MM)
PACKAGING (LN. FT. PER TUBE)	50



Our trim gives you options

All of our metal trim is available in four finishes: primed, clear anodized, powder coated, or custom color. For pricing and lead times, view our Price Catalog at nichiha.com/price-catalog.



For popular panels like VintageWood, we've made ordering easier by color matching all of our trim profiles to have in stock for fast delivery.



Thanks to our Color Xpressions system, Nichiha can customize trim to match any color you use on custom color panels.



Behind our Architectural Wall Panels is SOME SERIOUS TECHNOLOGY.

EASY INSTALLATION

Time-saving clip installation system that reduces construction time and minimizes mistakes.



NO MORTAR, NO MESS

Prefinished panels eliminate the need for messy mortar or costly masonry-skilled labor.



ANY WEATHER PRODUCT

Products can be installed year round in any climate across the country. No geographical restrictions means more possibilities.



LOW MAINTENANCE

No-fuss products. Little ongoing cleaning or regular maintenance needed. Bring your vision to life and ensure it looks great for years to come.

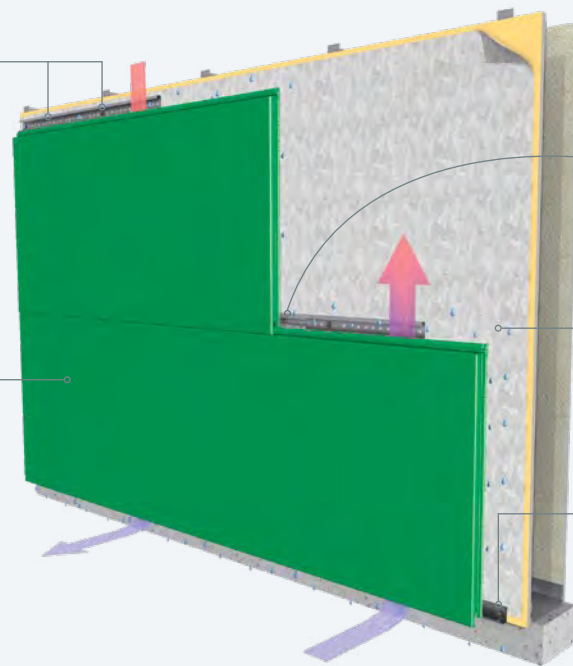


ENGINEERED FOR PERFORMANCE

Go beyond our durable panels and discover a meticulously engineered moisture management system that provides a vertical drainage point for air and moisture to exit.

THE ULTIMATE CLIP creates a hidden fastening system that all but eliminates face fastening. Installation is quick and easy and never requires specialty subcontractors.

NICHIHA ARCHITECTURAL WALL PANELS are lightweight, easy to handle and available in a virtually endless color palette and a diverse offering of textural finishes.



NICHIHA'S JOINT TAB ATTACHMENT is designed to support panel lateral stability, helping vertical joints stay tightly closed. The tab fits in place easily and is fastened to the Ultimate Clip with provided screw.

DRAINED AND BACK-VENTILATED RAINSCREEN design allows water to escape and air to circulate, reducing the risk of mold and water damage inside the building.

THE ULTIMATE STARTER TRACK pulls double-duty. It ensures a fast, level installation, and its patented drainage channel directs water out and away from the base of the wall.

Never underestimate the power of REALLY GOOD TOOLS.

Whether you are an architect, contractor, installer or builder, Nichiha ensures that you have all the information you need to make your project go as smoothly as possible. The way we see it, we are partners. Our website offers a comprehensive collection of technical information, installation videos, architectural details, in-depth specifications and everything you'll ever need to know about installing Nichiha products.



DESIGN REVIEW GUIDE

Download our quick reference guide to get an overview on our Architectural Wall Panels.

nichiha.com/docs/nichiha-design-review-guide.pdf



INSTALL DOCUMENTATION

Take an even deeper dive and download our in-depth installation guides.

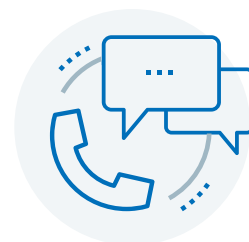
nichiha.com/resource-center/install-support



INSTALL VIDEOS

Watch our installation instructions come to life — check out our installation videos today!

nichiha.com/resource-center/install-support



SUPPORT

Our in-house technical team is here to assist. If you have questions, comments or concerns, call or email us.

1.866.424.4421 or technicalservices@nichiha.com

THE POWER OF POSSIBILITIES AND PARTNERSHIPS

Your creative vision is unique. That's why Nichiha offers you the power of cooperation to help your project move from conception to completion. Our ever-expanding offering of textures and finishes lifts buildings to new and unexpected places, and we want to share them with you. We place a high value on our relationships and are proud to work with our dedicated partners across the country. Join us to discover the power of possibilities and partnerships with Nichiha.



AIA
Continuing
Education
Provider

NICHIHA WARRANTIES

- ARCHITECTURAL WALL PANELS
15-year limited warranty* on panels
15-year limited warranty* on finish
- KURASTONE™ PANELS
15-year limited warranty* on panels
10-year limited warranty* on finish
- METAL TRIM
TAMLYN warrants defective-free products for a period of 10 years for the original purchaser. Please visit tamlyn.com for detailed information on terms, conditions and limitations.

*See Nichiha warranties for detailed information on terms, conditions and limitations. Visit nichiha.com for easy downloadable warranties or call toll-free 1.866.424.4421 for a copy.

Nichiha MSDS is available at nichiha.com, at your local Nichiha dealer or call Nichiha direct, toll-free 1.866.424.4421.

CERTIFICATION & TESTING



CCRR-0299
CCRR-0290



Report
No. EC-58



Canada CCMC
14132-R



Report
No. FL12875
No. FL12812



NOA 18-0522.05



WUI 8140-2029



RR 26081



SILICA DUST WARNING: Nichiha products may contain some amounts of crystalline silica [a.k.a. sand, silicon dioxide], which is a naturally occurring mineral. The amount will vary from product to product. Inhalation of crystalline silica into the lungs and repeated exposure to silica can cause health disorders, such as silicosis, lung cancer, or death depending upon various factors. To be conservative, Nichiha recommends that whenever cutting, sawing, sanding, sniping or abrading the product, users observe Safety Instructions. For further information or questions, please consult the MSDS, your employer, or visit osha.gov/SLTC/silicacrystalline/index.html and cdc.gov/niosh/topics/silica. The MSDS for Nichiha products are available at nichiha.com, at your local Nichiha dealer or through Nichiha directly at 1.866.424.4421. FAILURE TO ADHERE TO OUR WARNINGS, MSDS, AND OTHER INSTRUCTION MAY LEAD TO SERIOUS PERSONAL INJURY OR DEATH.

ARCHITECTURALBLOCK, CANYONBRICK, EMPIREBLOCK, ILLUMINATION, INDUSTRIALBLOCK, KURASTONE, PLYMOUTHBRICK, MIRAIA, RIBBED, ROUGHSAWN, SANDSTONE, TUFFBLOCK, THE POWER OF POSSIBILITIES, VINTAGEBRICK and VINTAGEWOOD are trademarks of Nichiha USA, Inc.

6465 E. JOHNS CROSSING, SUITE 250, JOHNS CREEK, GA 30097 | 866.424.4421 | NICHHA.COM

NOTE: Printed material may not accurately depict actual product color. ©2020 Nichiha USA, Inc. All rights reserved. Printed in the USA. NLC 07.20 10K



DynaClad[®] PVDF Color Chart

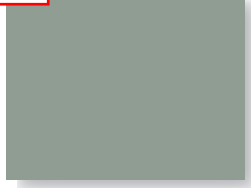
Dublin Village Building 'A' West Elevation
Coping, Flashing, Etc.
2/2/2021



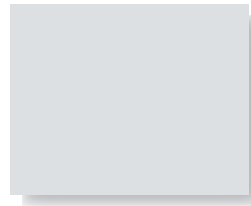
PUTTY
SRI = 77



SANDSTONE
SRI = 77



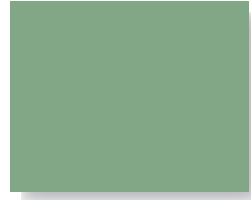
DOVE GREY
SRI = 61



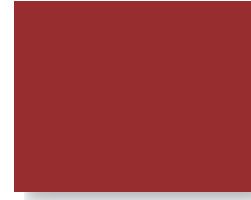
WHITE
SRI = 85



COBALT BLUE
SRI = 20



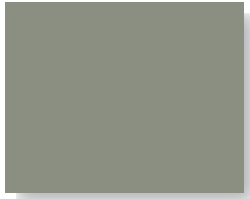
PATINA COPPER
SRI = 58



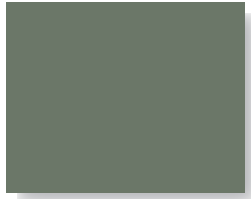
BRITE RED*
SRI = 44



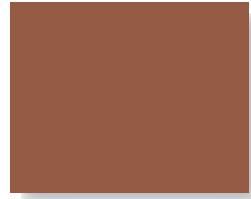
BEIGE
SRI = 53



STONE
SRI = 49



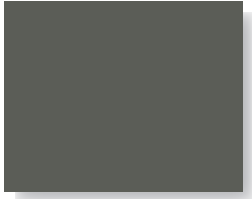
SLATE GREY
SRI = 47



TERRA COTTA
SRI = 43



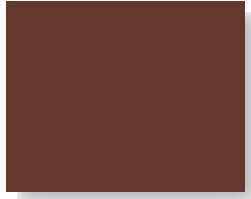
METALLIC SILVER
SRI = 53



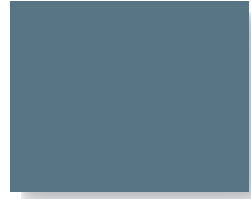
MUSKET GREY
SRI = 35



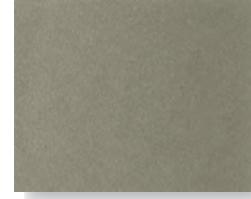
SEAPORT
SRI = 35



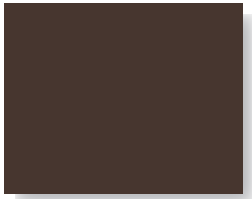
COLONIAL RED
SRI = 34



SLATE BLUE
SRI = 34



CHAMPAGNE
SRI = 51



BURGUNDY
SRI = 34



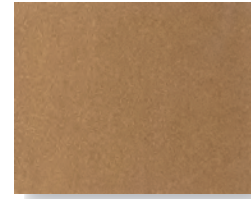
HEMLOCK GREEN
SRI = 31



LEAF GREEN
SRI = 31



CHARCOAL GREY
SRI = 31



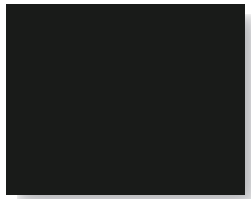
METALLIC COPPER
SRI = 49



SPARTAN BRONZE
SRI = 30



CLASSIC BRONZE
SRI = 29



MATTE BLACK
SRI = 29



EVERGREEN
SRI = 28



AGED COPPER
SRI = 43



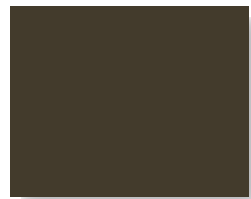
DARK BRONZE
SRI = 27



ROYAL BLUE
SRI = 27



HARTFORD GREEN
SRI = 26



BROWN
SRI = 25



WEATHERED ZINC
SRI = 37

† Metallic Colors †
Premium Colors **

† Metallic colors are directionally sensitive and therefore entire roof areas should be ordered at one time to ensure color uniformity.

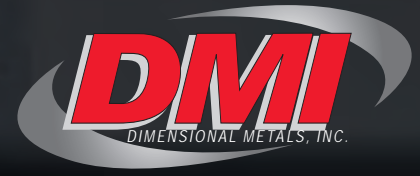
*Brite Red has a clear coat. ** Premium colors carry an upcharge. SRI = Solar Reflectance Index.

Colors shown are samples and may vary slightly from actual material.

CUSTOM COLORS ARE AVAILABLE

PROVEN. DEPENDABLE. SUSTAINABLE.

METAL ENVELOPE SYSTEMS SINCE 1988



800.828.1510

www.dmimetals.com

sales@dmimetals.com

PRODUCT - DynaClad® Prefinished Architectural Tension Levelled Coil and Flat Sheet is coated with a 70% Full Strength PVDF Paint Finish. The top side is coated with a polyester primer and a 70% full strength PVDF topcoat for a total mil thickness of 1.1 (± .1). The reverse side is a polyester primer and a polyester topcoat with a total dry film thickness of .55 (± .1).

Substrates
Galvalume®
 Consists of aluminum-zinc alloy coated (55% aluminum, 43.4% zinc, 1.6% silicon, nominal percentage by weight) carbon steel of commercial weight meeting ASTM 792.

HDG-90
 Consists of hot-dipped galvanized steel base sheet of commercial weight (AISI G90 designation) meeting ASTM A653.

Aluminum
 Consists of 3003/3105 H14 alloy aluminum base sheet of commercial weight meeting ASTM B209.

Stocked substrates are produced from 48" wide coil. Standard sized flat sheets are 48" X 120". Custom sized flat sheets can be produced in various widths and lengths with extended lead times and additional costs.

WARRANTY - A finish warranty covering color fade, chalking, and film integrity as well as a perforation warranty (Galvalume® only) covering base sheet integrity is available at no additional cost.

DYNACLAD® STOCKING COLOR/MATERIAL						
COLOR (IN ALPHABETICAL ORDER)	24 GAGE	22 GAGE	.032 ALUM.	.040 ALUM.	.050 ALUM.	.063 ALUM.
	GALVALUME KYNAR 500	GALVALUME KYNAR 500	3003/3105 H14 KYNAR 500	3003/3105 H14 KYNAR 500	3003/3105 H14 KYNAR 500	3003/3105 H14 KYNAR 500
AGED COPPER	•		•			
BEIGE	•	•	•	•	•	
BRITE RED	•		•	•		
BROWN	•		•	•		
BURGUNDY	•		•			
CHAMPAGNE	•		•			
CHARCOAL GREY	•		•	•		
CLASSIC BRONZE	•		•	•		
COBALT BLUE	•		•			
COLONIAL RED	•		•			
DARK BRONZE	•	•	•	•	•	•
DOVE GREY	•	•	•	•		
EVERGREEN	•		•	•		
HARTFORD GREEN	•		•			
HEMLOCK GREEN	•		•			
LEAF GREEN	•		•			
MATTE BLACK	•		•	•		
METALLIC COPPER	•		•			
METALLIC SILVER	•		•			
MUSKET GREY	•		•	•		
PATINA COPPER	•		•	•		
PUTTY	•	•	•	•	•	
ROYAL BLUE	•		•	•		
SANDSTONE	•	•	•	•		
SEAPORT	•		•			
SLATE BLUE	•		•			
SLATE GREY	•	•	•	•	•	
SPARTAN BRONZE	•		•	•		
STONE	•		•	•		
TERRA COTTA	•		•			
WEATHERED ZINC	•		•			
WHITE	•	•	•	•	•	•

COLORS LISTED ABOVE ARE AVAILABLE ON ANY OF THE SUBSTRATES BUT WILL HAVE ADDITIONAL LEAD TIMES AND COST.

STOCKED NON-PAINTED MATERIAL

- HDG-90 24 ga, 22 ga, 20 ga, 18 ga, and 16 ga
- ACRYLUME® 24 ga and 22 ga
- MILL FINISHED ALUMINUM .032, .040, .050, and .063
- CLEAR ANODIZED ALUMINUM .032 and .040
- COPPER 16 oz. and 20 oz.
- RHEINZINK® .7 mm, .8 mm, and 1.0 mm
- STAINLESS STEEL TYPE 304 24 ga and 22 ga

DynaClad® is a registered trademark of Dimensional Metals, Inc.
 Fluoropon® is a registered trademark of Sherwin-Williams.
 Galvalume® is a registered trademark of BIEC International Inc. and some of its licensed partners.
 Acrylume® is a registered trademark of USX.

PERFORMANCE SPECIFICATION

- ABRASION RESISTANCE (ASTM D968)**
Passed 80 Liters
- ACCELERATED WEATHERING (ASTM D4587, G154)**
5,000 hours with no chalking, blistering or loss of adhesion
- CHEMICAL RESISTANCE (ASTM E1308)**
No visible changes
- ADHESION (ASTM D3359)**
No coating removed
- COLOR CHANGE (ASTM D2244)**
After 2,000 hours color change less than 2 NBS units
- FLAME TEST (ASTM E84)**
Class A
- FLORIDA EXTERIOR DURABILITY (ASTM G7, E2244 & D4214)**
Less than 5 Δ units color change and chalk rating of less than 8
- FORMABILITY / T BEND (ASTM D522 & D4145)**
No adhesion loss on a 1/8" Mandrel and 2T bend
- GLOSS (ASTM D523)**
30% (±5%) at 60 degrees
55% (±5%) at 85 degrees
- HUMIDITY (ASTM D2247)**
2,000 hours Galvalume® and G-90
3,000 hours Aluminum
- IMPACT (ASTM D2794)**
No cracking or loss of adhesion
- PENCIL HARDNESS (ASTM D3363)**
HB Minimum
- SALT SPRAY (ASTM B117)**
No blisters or adhesion loss after 2,000 hours for Galvalume® & G-90
No blisters or adhesion loss after 3,000 hours for Aluminum
- CYCLIC SALT FOG (ASTM D5894)**
Acceptance

See dmimetals.com for test reports, thermal emittance, and SR values.



PROUDLY FINISHED WITH
SHERWIN-WILLIAMS
 Coil Coatings



Dublin Village
Building 'A' West Elevation
Paint
2/2/2021

SW 7643

Pussywillow

Interior / Exterior

Location Number: 283-C4



SW 7048

Urbane Bronze

Interior / Exterior

Location Number: 245-C7



Please select your region:

- Cincinnati / Dayton / NKY Columbus Midwest National

[RESIDENTIAL \(/RESIDENTIAL\)](#)

[COMMERCIAL \(/COMMERCIAL\)](#)

PRODUCTS

[Hardscapes & Outdoor Living \(/products/hardscapes-outdoor-living\)](/products/hardscapes-outdoor-living)

[Tristate Tile \(/products/tristate-tile\)](/products/tristate-tile)

[RockCast Architectural Stone \(/products/architectural-stone\)](/products/architectural-stone)

[Moderno Series \(/products/rockcast-architectural-stone/moderno-series\)](/products/rockcast-architectural-stone/moderno-series)

[RockCast Modular Veneer Units \(/products/rockcast-architectural-stone/rockcast-modular-veneer-units\)](/products/rockcast-architectural-stone/rockcast-modular-veneer-units)

[RockCast Caliza Stone \(/products/rockcast-architectural-stone/rockcast-caliza-stone\)](/products/rockcast-architectural-stone/rockcast-caliza-stone)

[RockCast Custom Accents - Cast Stone \(/products/rockcast-architectural-stone/rockcast-custom-accent-cast-stone\)](/products/rockcast-architectural-stone/rockcast-custom-accent-cast-stone)

[RockCast Structural & Architectural Cast Stone \(wet\) \(/products/rockcast-architectural-stone/rockcast-structural-architectural-cast-stone-wet\)](/products/rockcast-architectural-stone/rockcast-structural-architectural-cast-stone-wet)

[RockCast Lightweight Series \(/products/rockcast-architectural-stone/rockcast-lightweight-series\)](/products/rockcast-architectural-stone/rockcast-lightweight-series)

[Thin Veneer \(/products/rockcast-architectural-stone/thin-veneer\)](/products/rockcast-architectural-stone/thin-veneer)

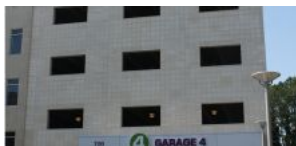
[Brick \(/products/brick\)](/products/brick)

[Thin Veneer \(/products/thin-veneer\)](/products/thin-veneer)

[CMU \(/products/cmu\)](/products/cmu)

[Hearth \(/products/hearth\)](/products/hearth)

Visit the Project Gallery



[\(/resources/project-gallery?term_node_tid_depth=55&tid_3=All&tid=All\)](/resources/project-gallery?term_node_tid_depth=55&tid_3=All&tid=All)

RockCast Thin Architectural Stone



el systems or using the IBP Fast Track
sonry on any indoor and outdoor wall,
masonry. This feature alone can yield
struction techniques or attaches to most
strackstone.com/details/) also

The Fast Track pre-engineered system can help builders achieve LEED objectives. Aluminum channels and clips have at least 25% post-consumer recycled content, and the entire system can be dismantled and re-purposed as a building's uses change.

Options

Specification

Installation

Information Downloads

Colors:



([https://www.readingrock.com/sites/default/files/styles/colors_-_shadowbox/public/02_brownstone_sm.jpg?](https://www.readingrock.com/sites/default/files/styles/colors_-_shadowbox/public/02_brownstone_sm.jpg?itok=MN1TkQR3)

itok=MN1TkQR3)

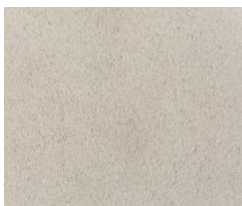
Brownstone



([https://www.readingrock.com/sites/default/files/styles/colors_-_shadowbox/public/07_buffstone_sm.jpg?](https://www.readingrock.com/sites/default/files/styles/colors_-_shadowbox/public/07_buffstone_sm.jpg?itok=dbFf8tzU)

itok=dbFf8tzU)

Buffstone



([https://www.readingrock.com/sites/default/files/styles/colors_-_shadowbox/public/04_charlotte_tan_sm.jpg?](https://www.readingrock.com/sites/default/files/styles/colors_-_shadowbox/public/04_charlotte_tan_sm.jpg?itok=F2jfUZO1)

itok=F2jfUZO1)

Charlotte Tan



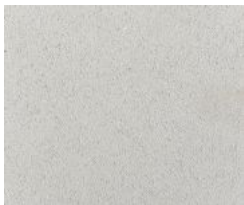
(https://www.readingrock.com/sites/default/files/styles/colors_-_shadowbox/public/21_clay_sm.jpg?itok=gHozlp16)

Clay



(https://www.readingrock.com/sites/default/files/styles/colors_-_shadowbox/public/01_creambuff_sm.jpg?itok=OAXm_jo3)

itok=OAXm_jo3)
Creme Buff



(https://www.readingrock.com/sites/default/files/styles/colors_-_shadowbox/public/08_crystal_white_sm.jpg?itok=hJMD57bD)

itok=hJMD57bD)
Crystal White



(https://www.readingrock.com/sites/default/files/styles/colors_-_shadowbox/public/17_lightgray_sm.jpg?itok=d33ezthN)

itok=d33ezthN)
Light Gray



(https://www.readingrock.com/sites/default/files/styles/colors_-_shadowbox/public/22_merlot_sm.jpg?itok=vQOwKW10)

itok=vQOwKW10)
Merlot



(https://www.readingrock.com/sites/default/files/styles/colors_-_shadowbox/public/12_riesling_sm.jpg?itok=d_oVnC9F)

itok=d_oVnC9F)
Riesling



(https://www.readingrock.com/sites/default/files/styles/colors_-_shadowbox/public/18_shadow_sm.jpg?

itok=UZVpceJQ)

Shadow



(https://www.readingrock.com/sites/default/files/styles/colors_-_shadowbox/public/03_smokehouse_sm.jpg?itok=c-

37ZeMD)

Smokehouse



(https://www.readingrock.com/sites/default/files/styles/colors_-_shadowbox/public/16_starbuck_sm.jpg?

itok=kVtWu1Ho)

Starbuck



(https://www.readingrock.com/sites/default/files/styles/colors_-_shadowbox/public/2s5a7731_burridge_web_15.jpg?

itok=tCdVv93k)

Bur Ridge



(https://www.readingrock.com/sites/default/files/styles/colors_-_shadowbox/public/commonwealth_web_15.jpg?

itok=uZovntQY)

Commonwealth



(https://www.readingrock.com/sites/default/files/styles/colors_-_shadowbox/public/2s5a7757_flax_web_15.jpg?

itok=H_sMMOz4)

Flax



(https://www.readingrock.com/sites/default/files/styles/colors_-

[_shadowbox/public/2s5a7725_golden_sky_web_15.jpg?itok=f6obhXxP](https://www.readingrock.com/sites/default/files/styles/colors_-shadowbox/public/2s5a7725_golden_sky_web_15.jpg?itok=f6obhXxP))

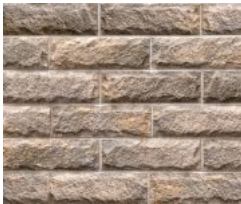
Golden Sky



(https://www.readingrock.com/sites/default/files/styles/colors_-shadowbox/public/2s5a7728_lily_white_web_15.jpg?

[itok=_yJROah2](https://www.readingrock.com/sites/default/files/styles/colors_-shadowbox/public/2s5a7728_lily_white_web_15.jpg?itok=_yJROah2))

Lily White



(https://www.readingrock.com/sites/default/files/styles/colors_-shadowbox/public/old_ohio_web_15.jpg?

[itok=CTkLTVlr](https://www.readingrock.com/sites/default/files/styles/colors_-shadowbox/public/old_ohio_web_15.jpg?itok=CTkLTVlr))

Old Ohio



(https://www.readingrock.com/sites/default/files/styles/colors_-shadowbox/public/slate_web_15.jpg?itok=2qnoNUbs

Slate



(https://www.readingrock.com/sites/default/files/styles/colors_-

[_shadowbox/public/2s5a7727_smoke_gray_web_15.jpg?itok=4GQjODRJ](https://www.readingrock.com/sites/default/files/styles/colors_-shadowbox/public/2s5a7727_smoke_gray_web_15.jpg?itok=4GQjODRJ))

Smoke Gray

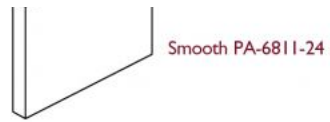


(https://www.readingrock.com/sites/default/files/styles/colors_-shadowbox/public/wheatstone_web_15.jpg?

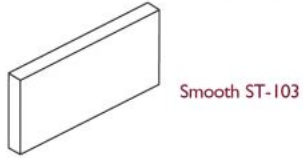
[itok=IWkhh08J](https://www.readingrock.com/sites/default/files/styles/colors_-shadowbox/public/wheatstone_web_15.jpg?itok=IWkhh08J))

Wheatstone

Shapes:



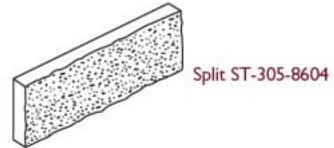
(D) $1\frac{1}{4}$ " x (H) $11\frac{5}{8}$ " x (L) $23\frac{5}{8}$ "



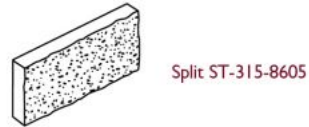
(D) $1\frac{1}{4}$ " x (H) $3\frac{5}{8}$ " x (L) $23\frac{5}{8}$ "



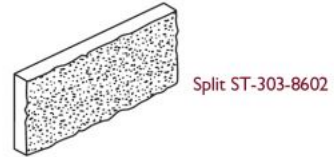
(D) $1\frac{1}{4}$ " x (H) $7\frac{5}{8}$ " x (L) $23\frac{5}{8}$ "



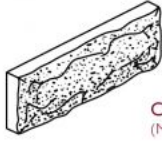
(D) $1\frac{1}{4}$ " x (H) $7\frac{5}{8}$ " x (L) $15\frac{5}{8}$ "



(D) $1\frac{1}{4}$ " x (H) $11\frac{5}{8}$ " x (L) $23\frac{5}{8}$ "

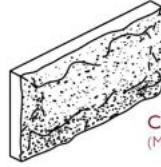


(D) 1 $\frac{3}{4}$ " x (H) 7 $\frac{5}{8}$ " x (L) 23 $\frac{5}{8}$ "



Chiseled ST-205-8611
(Mortar bed depth $\frac{3}{4}$ ", total depth 1 $\frac{3}{4}$ "

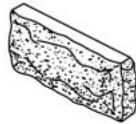
(D) 1 $\frac{3}{4}$ " x (H) 11 $\frac{5}{8}$ " x (L) 23 $\frac{5}{8}$ "



Chiseled ST-203-8610
(Mortar bed depth $\frac{3}{4}$ ", total depth 1 $\frac{3}{4}$ "

CORNER RETURNS

(D) 1 $\frac{3}{4}$ " x (H) 7 $\frac{5}{8}$ " x (L) 15 $\frac{5}{8}$ "



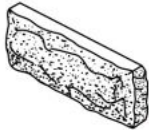
Chiseled ST-205-16FE-8615
(Mortar bed depth $\frac{3}{4}$ ", total depth 1 $\frac{3}{4}$ "

(D) 1 $\frac{3}{4}$ " x (H) 11 $\frac{5}{8}$ " x (L) 15 $\frac{5}{8}$ "



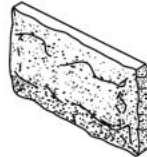
Chiseled ST-203-16FE-8613
(Mortar bed depth $\frac{3}{4}$ ", total depth 1 $\frac{3}{4}$ "

(D) 1 $\frac{3}{4}$ " x (H) 7 $\frac{5}{8}$ " x (L) 19 $\frac{5}{8}$ "



Chiseled ST-205-FE-8614
(Mortar bed depth $\frac{3}{4}$ ", total depth 1 $\frac{3}{4}$ "

(D) 1 $\frac{3}{4}$ " x (H) 11 $\frac{5}{8}$ " x (L) 19 $\frac{5}{8}$ "



Chiseled ST-203-FE-8612
(Mortar bed depth $\frac{3}{4}$ ", total depth 1 $\frac{3}{4}$ "

Questions? We're happy to help. Call us at 800.482.6466

PRODUCTS (/PRODUCTS)

[Hardscapes & Outdoor Living \(/products/hardscapes-outdoor-living\)](#)
[TriState Tile \(/products/tristate-tile\)](#)
[Architectural Stone \(/products/architectural-stone\)](#)
[Brick \(/products/brick\)](#)
[Thin Veneer \(/products/thin-veneer\)](#)
[CMU \(/products/cmu\)](#)
[Hearth \(/products/hearth\)](#)

ABOUT (/ABOUT)

[About Reading Rock \(/about\)](#)
[History \(/about/history\)](#)
[Mission & Values \(/about/mission-values\)](#)
[Memberships & Affiliations \(/about/memberships-affiliations\)](#)
[LEED \(/about/leed\)](#)
[In-House Capabilities \(/about/house-capabilities\)](#)
[Rettsyndrome.org \(/about/about-rettsyndromeorg\)](#)

[CAREERS \(/CONTACT-US/CAREERS\)](#) [FIND US ON](#)

RESOURCES (/RESOURCES)

[Project Gallery \(/resources/project-gallery\)](#)
[Case Studies \(/resources/case-studies\)](#)
[Tech & Spec Info \(/resources/tech-spec-info\)](#)
[Blog \(/resources/blog\)](#)

WHERE TO BUY (/WHERE-TO-BUY/FIND-DISTRIBUTOR)

[Find a Distributor \(/where-to-buy/find-distributor\)](#)
[Find an Installing Contractor \(/where-to-buy/find-a-installing-contractor\)](#)
[Locations & Business Hours \(/where-to-buy/reading-rock-locations\)](#)

CONTACT US (/CONTACT-US)

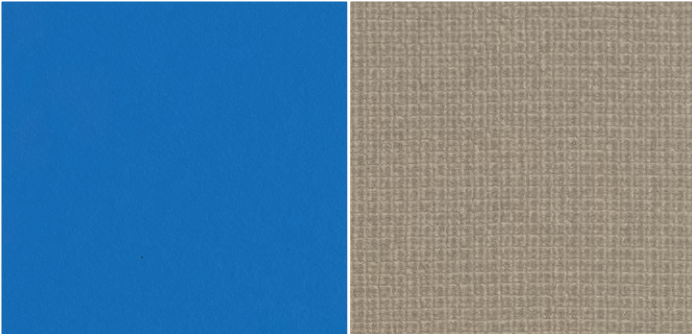
[Contact \(/contact-us\)](#)
[Reading Rock Locations \(/contact-us/reading-rock-locations\)](#)
[Our Team \(/contact-us/our-team\)](#)
[Schedule a Hearth Service \(/schedule-hearth-service\)](#)
[Schedule a Lunch & Learn \(/contact-us/schedule-lunch-learn\)](#)
[Certification Classes \(/contact-us/certification-classes\)](#)
[Careers \(/contact-us/careers\)](#)

Dublin Village Building 'A' West Elevation
Horizontal Plank Siding
12/15/2020



STONEWOOD SELECT DESIGNS

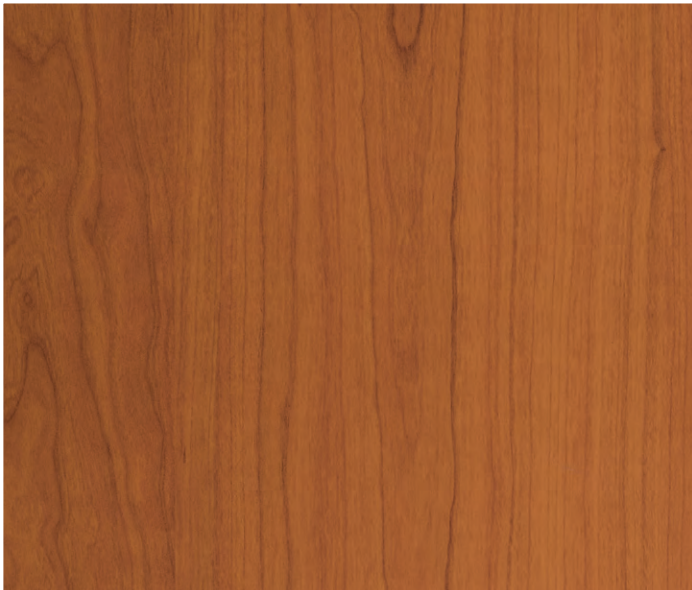
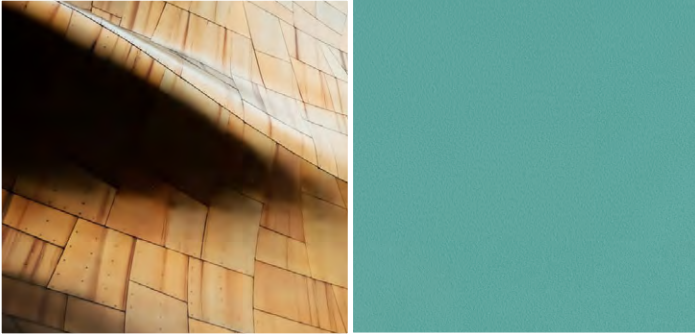
Current Trends, Competitive Pricing,
Attractive Lead Times



STONEWOOD EXTERIOR DESIGN OFFERING

STONEWOOD STANDARD DESIGNS

Versatile Woodgrains, Solid and Abstract Designs



STAND ALONE IN A WORLD OF COLOR!



STONEWOOD™
ARCHITECTURAL PANELS

PROUDLY MADE IN AMERICA

TRUE NATURE TREND

Natural wood finishes, earthen textures and unique material characteristics that are showcased rather than corrected.



Rotary Ply 1913-AA



Harvest Ply 8078-AA



Terra Impression 8684-DA



Cask Oak 7695-AA

MINERALIZE TREND

Neutral grey undertones as seen in concrete, slate, and weathered woodgrains.



Greystone Pine 1523-DA



Mineral Impression 2862-DA



Carbon Oak 6588-AA



Loft Ash 3340-DA

INDUSTRIAL TREND

Rustic time-worn metals, reclaimed materials, natural stones and sun faded woodgrains.



Chalked Oak 5361-AA



Nantucket Oak 5999-AA



Bronze Impression 9120-DA



Granary Pine 8875-DA

PRODUCT DESCRIPTION

Benefits

- Solid phenolic core panels offer strength and durability, plus moisture and weather resistance
- Manufactured in America; Wisconsin-based customer service
- Attaches using a non-proprietary fastener system
- Non-porous surface is easy to clean and graffiti resistant
- Factory or field fabrication
- Simplified long-term maintenance; replace singular panels as required
- 10 year product warranty

Sustainable Design Benefits

- Contributes to LEED Credits in multiple categories
- Offered with Forest Stewardship Council® certification
- Manufactured with renewable energy

Design Offering

- Extensive Design Offering available; wood grains, neutrals, abstract and bold options



Applications

- Exterior wall cladding is suitable for all construction types: commercial, hospitality, mixed-use, municipal, multi-family, healthcare and institutional
- Various shapes and sizes available

Codes and Compliances*

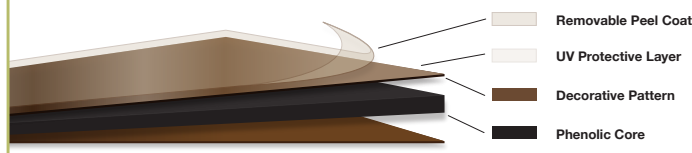
- NFPA 285 passed
- Class A or Class B Fire Rating
- Miami-Dade County NOA (Notice of Acceptance)
- NEMA Test Results
- ASTM D-790
- Weathering Resistance
- General Manufacturing Tolerances

PANEL OVERVIEW

Panel Thickness	5/16" (8mm)	3/8" (10mm)	1/2" (13mm)
Panel Weight 4' x 8'	70 lbs (32 kg)	84 lbs (38 kg)	112 lbs (51 kg)
Install with Exposed Fastening System	✓	✓	✗
Install with Concealed Fastening System	✗	✓	✓
Use with Insulation or without Insulation	✓	✓	✓
Field and Factory Fabrication	✓	✓	✓
Use with Ventilated Facade System	✓	✓	✓
Common Fabricated Sizes			
24" x 8'	✓	✓	✓
11 3/4" x 8'	✓	✓	✓
7 5/8" x 8'	✓	✓	✓
5 5/8" x 8'	✓	✓	✓

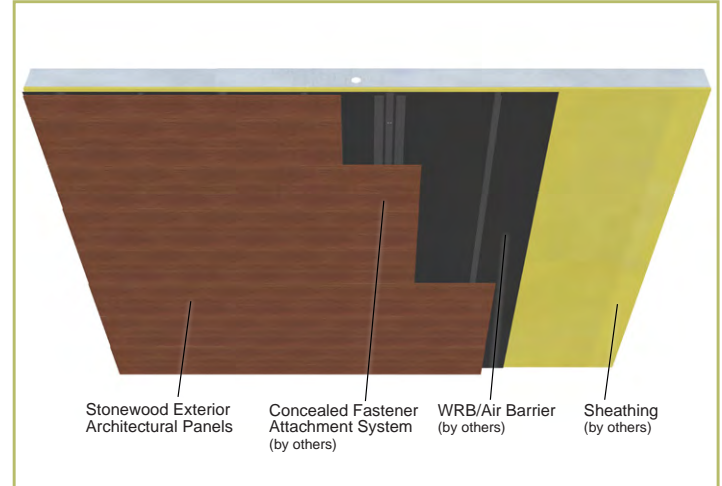
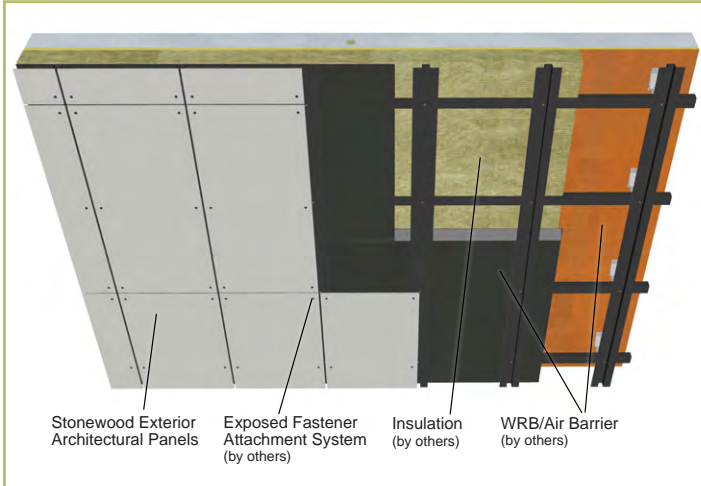


Panel Characteristics



Stonewood is manufactured with a kraft paper core impregnated with phenolic resin, and capped with a decorative pattern that has been impregnated with melamine resin.

PRODUCT APPLICATION EXAMPLES



INSTALLATION OVERVIEW

Storage and Handling

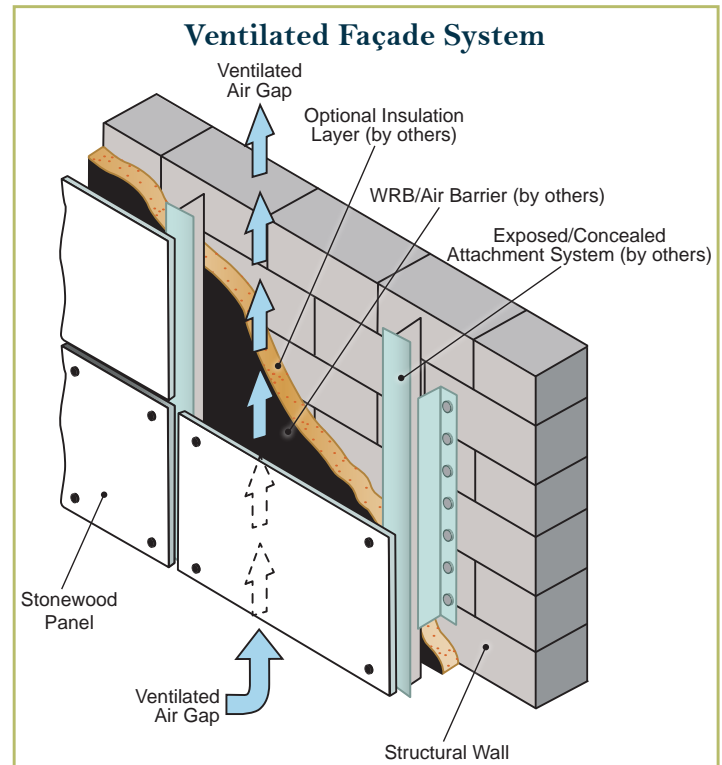
- Keep panels in original packaging, store indoors

Installation

- Affix panels according to cladding attachment (by others) manufacturer instructions. Fibersin is not responsible for cladding attachment warranty.
- Panels must be fitted with suitable subframe corrosion resistant fasteners
- Minimum distance of 3/8" (10mm) must be maintained between panels (on all sides), to accommodate hygrothermal movement
- Panels must be supported by the maximum surface area of the sub-frame element
- Maximum spacing between fasteners is 24"
- Minimum of 3 supports, vertical and horizontal, are required except for planks under 20"
- For complete field drilling and factory processing guidelines review Stonewood Technical Guide at Stonewoodpanels.com

Cleaning & Repair

- Clean panels with lukewarm water, dishwashing detergent, and soft cloth
- Stubborn stains can be removed with hexane, aliphatic naphtha or kerosene
- Damaged panels must be replaced, panels cannot be repaired



Stonewood Exterior Panels are designed to work as cladding with rain screen design in a ventilated façade system.

TRIFAB® VG (VERSAGLAZE®)
TRIFAB® VG 450, 451 & 451T (THERMAL) FRAMING SYSTEMS &
TRIFAB® 451UT (ULTRA THERMAL) FRAMING SYSTEM



Design + Performance

Versatility with Unmatched Fabrication Flexibility

Dublin Village
Building 'A' West Elevation
Storefront
2/2/2021



Geisinger Professional Building
Jenkins Township, Pennsylvania
ARCHITECT
Mericle Commercial Real Estate Services
Wilkes-Barre, Pennsylvania
GLAZING CONTRACTOR
Sterling Glass, Inc., Scranton, Pennsylvania
PHOTOGRAPHER
© Perzel Photography Group

Trifab® VersaGlaze® is built on the proven and successful Trifab® platform – with all the versatility its name implies. There are enough framing system choices, fabrication methods, design options and performance levels to please the most discerning building owner, architect and installer. The 4.5" depth Trifab® VersaGlaze® Framing System family is available with non-thermal, thermal and ultra-thermal performance levels. The ultra-thermal Trifab® 451UT Framing System, is designed for the most demanding thermal performance and employs a dual Isolock® thermal break.

AESTHETICS

Trifab® VersaGlaze® Framing Systems offer designers a choice of front-, center-, back- or multi-plane glass applications. Structural silicone

glazing (SSG) and weatherseal glazing options further expand designers' choices, allowing for a greater range of possibilities for specific project requirements and architectural styles. All systems have a 4-1/2" frame depth; Trifab® VersaGlaze® 450 has 1-3/4" sightlines, while Trifab® VersaGlaze® 451/451T and Trifab® 451UT have 2" sightlines.

With seamless incorporation of Kawneer entrances or windows, including GLASSvent® visually frameless ventilators, Trifab® framing can be used on almost any project. These framing systems can also be packaged with Kawneer curtain walls and overhead glazing, thereby providing a full range of proven, and tested, quality products for the owner, architect and installer from a single-source supplier.

ECONOMY

Trifab® VersaGlaze® 450/451/451T/451UT Framing Systems offer a variety of fabrication choices to suit your project:

- **Screw Spline** – for economical continuous runs utilizing two-piece vertical members that provide the option to pre-assemble units with controlled shop labor costs and smaller field crews for handling and installation. (available for all systems)
- **Shear Block** – for punched openings or continuous runs using tubular moldings with shear block clips that provide tight joints for transporting large pre-assembled multi-lite units. (available for 450/451/451T systems)
- **Stick** – for fast, easy field fabrication. Field measurements and material cuts can be done when metal is on the jobsite. (available for 450/451/451T systems)
- **Pre-glazed** – The combination of screw spline construction with pre-glazing in the shop accelerates installation and reduces field labor time while minimizing disruption to the surrounding area or existing tenants. Making it an exceptional choice for new or retrofit applications, particularly in urban areas or where space is limited. (available for 451/451T/451UT framing)



Brighton Landing
Cambridge, Massachusetts
 ARCHITECT
ADD Inc., Cambridge, Massachusetts
 GLAZING CONTRACTOR
Ipswich Bay Glass Company, Inc., Rowley, Massachusetts
 PHOTOGRAPHER
 © **Gordon Schenck, Jr.**

All systems can be flush glazed from either the inside or outside. The weatherseal option provides an alternative to SSG vertical mullions for Trifab® VersaGlaze® 450/451/451T. This ABS/ASA rigid polymer extrusion allows complete inside glazing and creates a flush glass appearance on the building exterior without the added labor of scaffolding or swing stages. Additionally, high-performance flashing options are engineered to eliminate perimeter sill fasteners and associated blind seals.

FOR THE FINISHING TOUCH

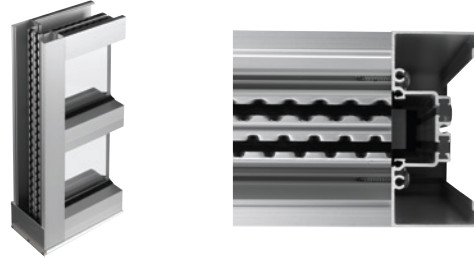
Architectural Class I anodized aluminum and painted finishes in fluoropolymer (AAMA 2605) and solvent-free powder coatings (AAMA 2604) offer a variety of color choices.

© Kawneer Company, Inc. 2007–2020
 Form Number 17-2289.C
 Trifab®, VersaGlaze®, IsoLock® and
 GLASSvent® are registered trademarks
 of Kawneer Company, Inc.



PERFORMANCE

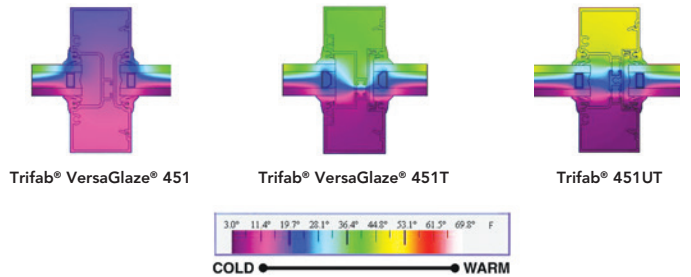
Kawneer’s IsoLock® thermal break technology creates a composite section, prevents dry shrinkage and is available on Trifab® VersaGlaze® 451T. For even greater thermal performance, a dual IsoLock® thermal break is used on Trifab® 451UT.



Trifab® 451UT uses a dual IsoLock® thermal break (right) and features a new high-performance sill design, which incorporates a screw-applied end dam (left), ensuring positive engagement and tight joints between the sill flashing and end dam.

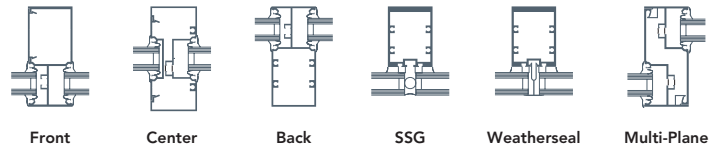
U-factor, CRF values and STC ratings for Trifab® framing systems vary depending upon the glass plane application. Project-specific U-factors can be determined for each individual project. (See the Kawneer Architectural Manual or Kawneer.com for additional information.)

Thermal simulations showing temperature variations from exterior/cold side to interior/warm side.



PERFORMANCE TEST STANDARDS

Air Infiltration	ASTM E283
Water	AAMA 501, ASTM E331
Structural	ASTM E330
Thermal	AAMA 1503
Thermal Break	AAMA 505, AAMA TIR-A8
Acoustical	AAMA 1801, ASTM E1425



PERMACOAT™ POWDER COATINGS

Solvent-Free Finishes That Add High Performance, Durability to Your World



*Denotes non-standard color



BLACK



BOYSENBERRY*



MILITARY BLUE*



CHARCOAL



DARK GREEN



LIGHT GREEN*



BRICK RED



MEDIUM BLUE



MILK WHITE



ATLANTIC GRAY



IVORY



SANDSTONE



ANTIQUE BRONZE



BONE WHITE



CLARET RED



MIDNIGHT BLUE



NIGHT HAWK GRAY*



SMOKE GRAY



LIGHT GRAY



SEPIA BROWN*



JAVA BROWN



HARTFORD GREEN



DOVE GRAY



CLASSIC BRONZE



DEEP BLUE



INTERSTATE GREEN



REDWOOD



DARK IVY*



MEDIUM BRONZE



SEA WOLF



SUMMER YELLOW*

As communities throughout the world recognize the need to preserve natural resources, governments have imposed stricter safety controls and increased pressure to reduce emissions such as paint solvents into the atmosphere. Building owners and architects have responded to these environmental concerns while also requiring higher performance, superior durability and more color choices for their projects.

PERFORMANCE THAT MEETS AAMA 2604 REQUIREMENTS

Kawneer now offers a solution – Permacoat™ Powder Coatings – for new or remodel projects requiring a solvent-free finish that:

- Meets the exacting requirements of AAMA 2604
- Demonstrates outstanding gloss and color retention
- Complies with most environmental regulations
- Provides optimal corrosion resistance
- Exhibits durability, excellent mechanical properties and abrasion resistance
- Competes with solvent-based paints in all respects
- Offers standard and custom finish colors
- Offers higher gloss levels – contact your Kawneer sales representative for information
- Offers additional custom shades subject to technical approval

PERFORMANCE TABLE

Mechanical Performance	AAMA 2604 Reference	Permacoat™ Performance
Dry Film Hardness	Section 7.3	Pass H
Dry Film Adhesion	Section 7.4.1.1	Pass No film disbondment
Impact Resistance	Section 7.5	Pass No film disbondment
Abrasion Resistance	Section 7.6	Pass >20 liters per mil
Chemical Resistance	AAMA 2604 Reference	Permacoat™ Performance
Muriatic Acid Resistance	Section 7.7.1	Pass No visual change or blistering
Mortar Resistance	Section 7.7.2	Pass No visual change or loss of adhesion
Nitric Acid Resistance	Section 7.7.3	Pass Color change ≤5ΔE (Hunter)
Detergent Resistance	Section 7.7.4	Pass No film removal or blistering
Corrosion Tests	AAMA 2604 Reference	Permacoat™ Performance
Wet Adhesion	Section 7.4.1.2	Pass No film removal or blistering
Boiling Water Adhesion	Section 7.4.1.3	Pass No film removal or blistering
Humidity Resistance	Section 7.8.1	Pass No blisters > “few No. 8” (ASTM D714)
Salt Spray Resistance	Section 7.8.2	Pass <1.6 mm creep from scribe
Weathering 5 Years Florida	AAMA 2604 Reference	Permacoat™ Performance
Color Retention	Section 7.9.1.2	Pass Color change ≤5ΔE (Hunter)
Chalking Resistance	Section 7.9.1.3	Pass No more than No. 8 rating (ASTM D4214)
Gloss Retention	Section 7.9.1.4	Pass ≥ 30% gloss retention
Erosion Resistance	Section 7.9.1.5	Pass < 10% Film loss

Note: These color samples are as close as possible to actual colors offered within the limitations of printing techniques. Final color specification shall be as per approved color samples.