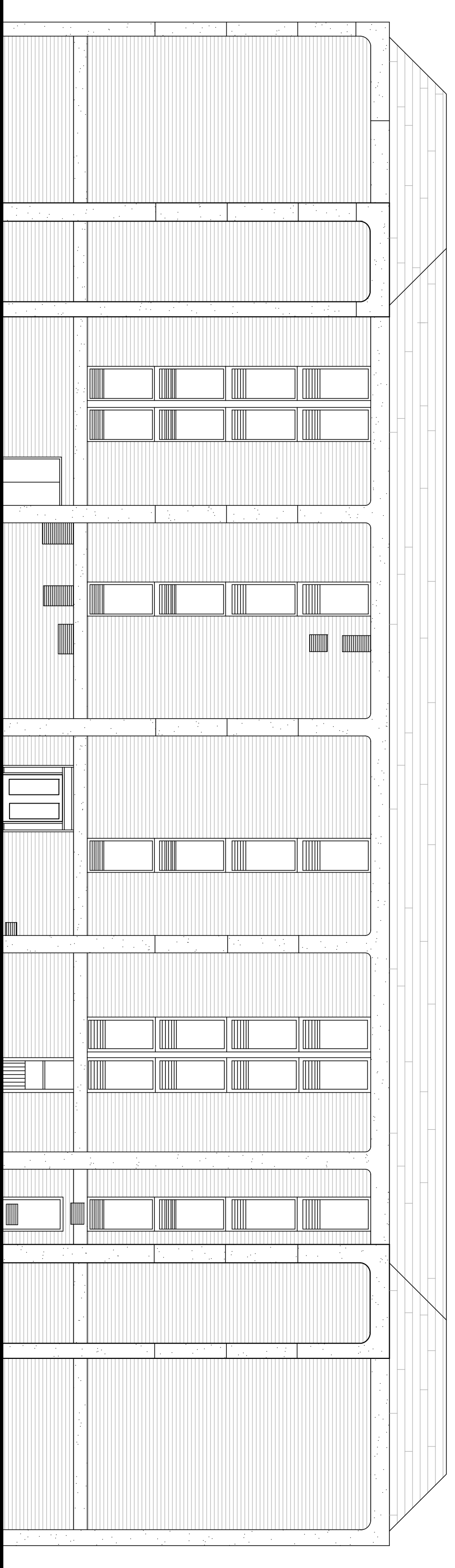


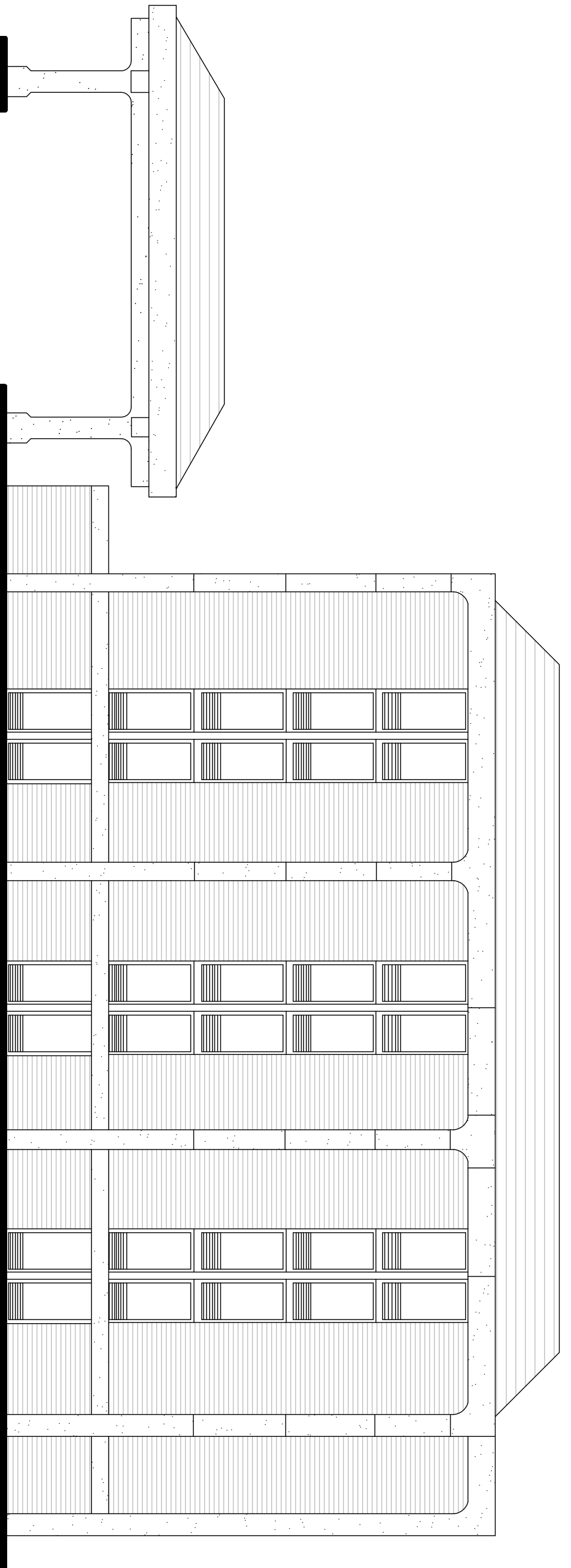
FRONT ELEVATION

SCALE: 1/4"=1'-0"



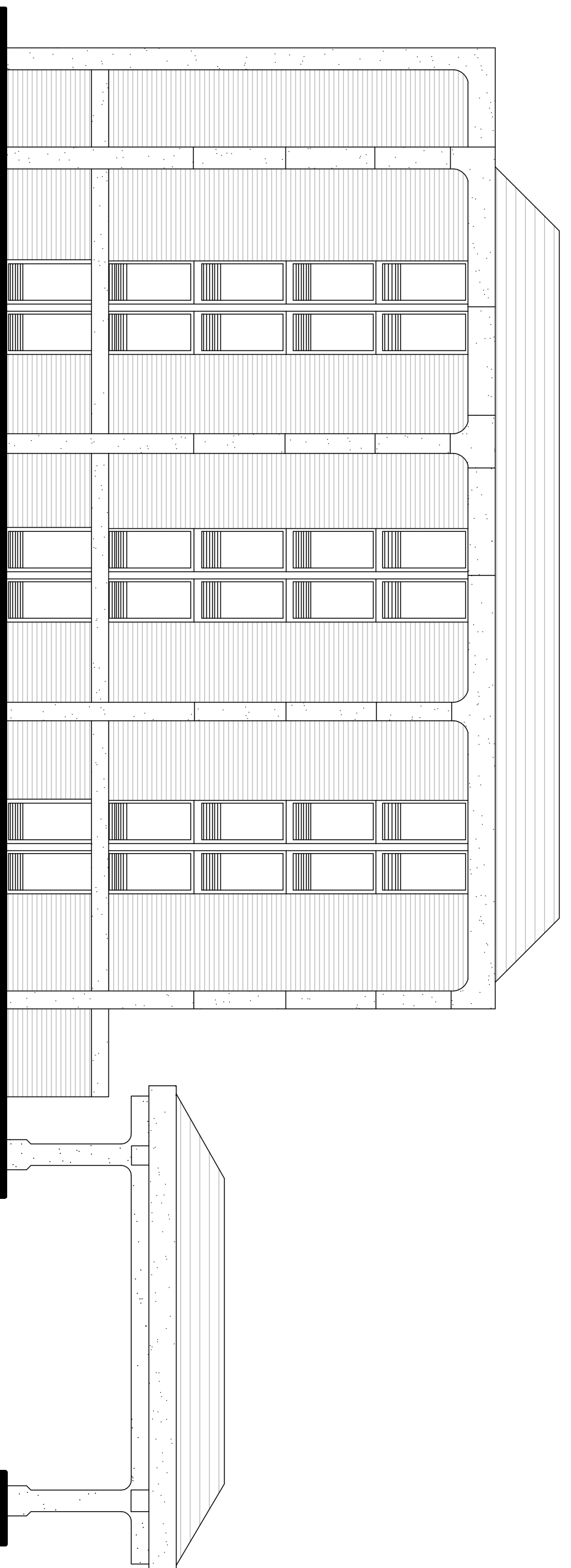
REAR ELEVATION

SCALE: 1/4"=1'-0"



SIDE ELEVATION

SCALE: 1/4"=1'-0"



SIDE ELEVATION

SCALE: 1/4"=1'-0"

project no.

D0000

date

DECEMBER 2019

drawn by

Z.M. HALL

checked by

L.W. DONOVAN

revisions

ALL TRADE PERSONS RESPONSIBLE FOR THE ACCURACY OF THE INFORMATION AND DATA CONTAINED HEREIN AND THE RESPONSIBILITY FOR THE INFORMATION AND DATA CONTAINED HEREIN SHALL BE THE RESPONSIBILITY OF THE ARCHITECT. THE ARCHITECT SHALL BE RESPONSIBLE FOR THE ACCURACY OF THE INFORMATION AND DATA CONTAINED HEREIN AND THE RESPONSIBILITY FOR THE INFORMATION AND DATA CONTAINED HEREIN SHALL BE THE RESPONSIBILITY OF THE ARCHITECT. THE ARCHITECT SHALL BE RESPONSIBLE FOR THE ACCURACY OF THE INFORMATION AND DATA CONTAINED HEREIN AND THE RESPONSIBILITY FOR THE INFORMATION AND DATA CONTAINED HEREIN SHALL BE THE RESPONSIBILITY OF THE ARCHITECT.

New Drawings for

HAMPTON INN

Columbus, Ohio

DONOVAN + DONOVAN
 architecture • engineering • interior design

427 Main Street • Post Office Box 976 • Vincennes, Indiana 47591
 Tel: 812.882.0415 • Fax: 812.882.4600 • Email: donovananddonovan@sbcglobal.net

sheet no.

A2.1

of