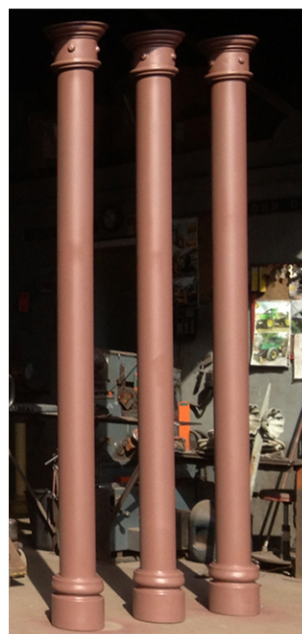
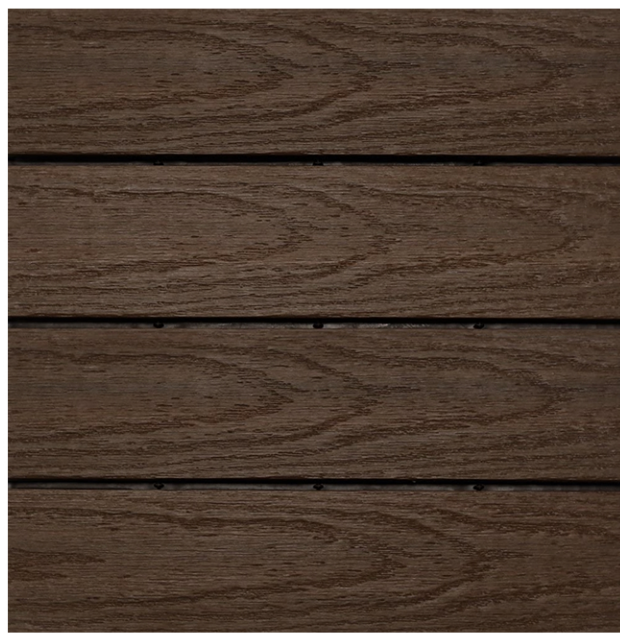


1. Columns



Finish



2. Wood Trim and Custom Planters



3. Wall Tile



4. Glazing



Finish

1. Architectural Iron Company - Eden Column
120" H
Finish - Appalachian Brown 2115-10

2. NewTechWood
5.5" H x .5" Thick - T&G US09
Finish - Spanish Walnut

3. Manufacturer TBD
25" H x 9.5" W
Finish - Setan Sage

4. Renlita - Evo Doors w/ Screen
Finish - Black



C2 - Pendant - Patio



W1 - Sconce - Corner



W2 - Coach - Patio



C1 - Accent - Entry | Corner | Patio



C1 - Ceiling Fan - Patio



W3 - Wall Wash - Entry | Patio

C2. Kichler Lighting - Halleron - 3 Light Pendant
8.75" H x 12" W - *Mounting Heights vary
Finish - Londonderry

W1. Kichler Lighting - Courtyard Collection
40.25" H x 13.5" W
Finish - Rubbed Bronze

W2. Troy Lighting - Owings Mill Double Postmount
17.75" H x 21" W
Finish - Natural Bronze

C1. 90+ Lighting - LED Edison Bulb
5.5" H x 2.5" W
Finish - Amber Tint

C1. Minka Aire Fan - Rainman Ceiling Fan
54" Diameter
Finish - Natural Bronze

W3. National LED - LinearStar
12" L Increments
Finish - Black



1. Chair - Patio



2a.



2b.

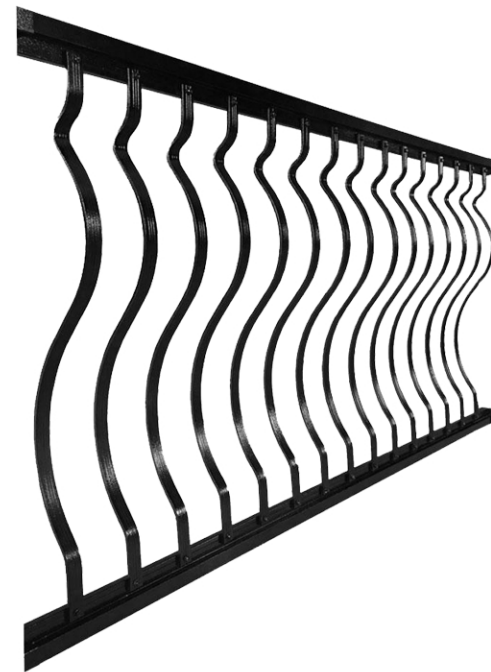
2. Table Base - Patio



3. Table Top - Patio



4. Bench - Entry



5. Rail - Patio



1. Superior Seating
33.5" H x 17.5" W x 23" D
Finish - Aluminum Bamboo-Look Chair in Brown

2. Tablebases.com
2a. Bruni 4 Table Base
2b. Bruni 2 X 2 Table Base
Finish - Black

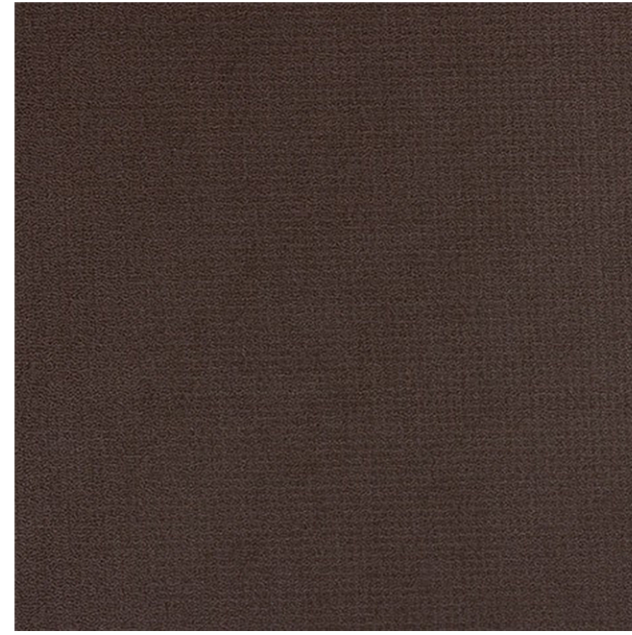
3. Cambria
Finish - Kelvingrove

4. The Park Catalog - Blair Ornamental Steel Strap
72" Long
Finish - Black

5. Manufacturer TBD - Curved Baluster
Finish - Appalachian Brown 2115-10
(Posts and Awning Structure To Match)



1. Awning - Entry | Patio



2. Awning Screen - Patio



3. Planter - Entry



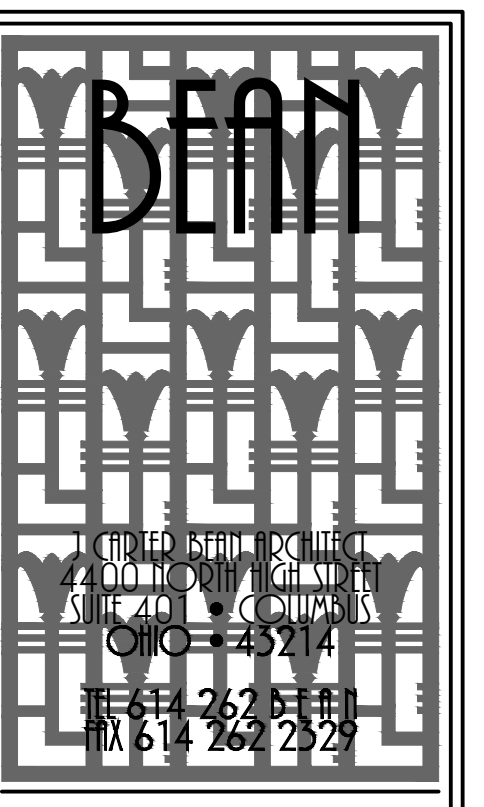
4. Planter - Corner

1. Weblon - Coastline Plus - Continental Stripes
Finish - Rust / Sand / Dark Brown CP-2887

2. Dickson - Collection Awning
Finish - Brownie U224

3. The Pottery Patch - (3) Tall Egg Pots
24.5" H x 11.25" W
39.25" H x 15.25" W
42" H x 22" W
Finish - Green Black Moss

4. The Pottery Patch - (3) Carved Square Planter
9" H x 9" W
13.25" H x 12" W
15.25" H x 15.75" W
Finish - Metallic Copper



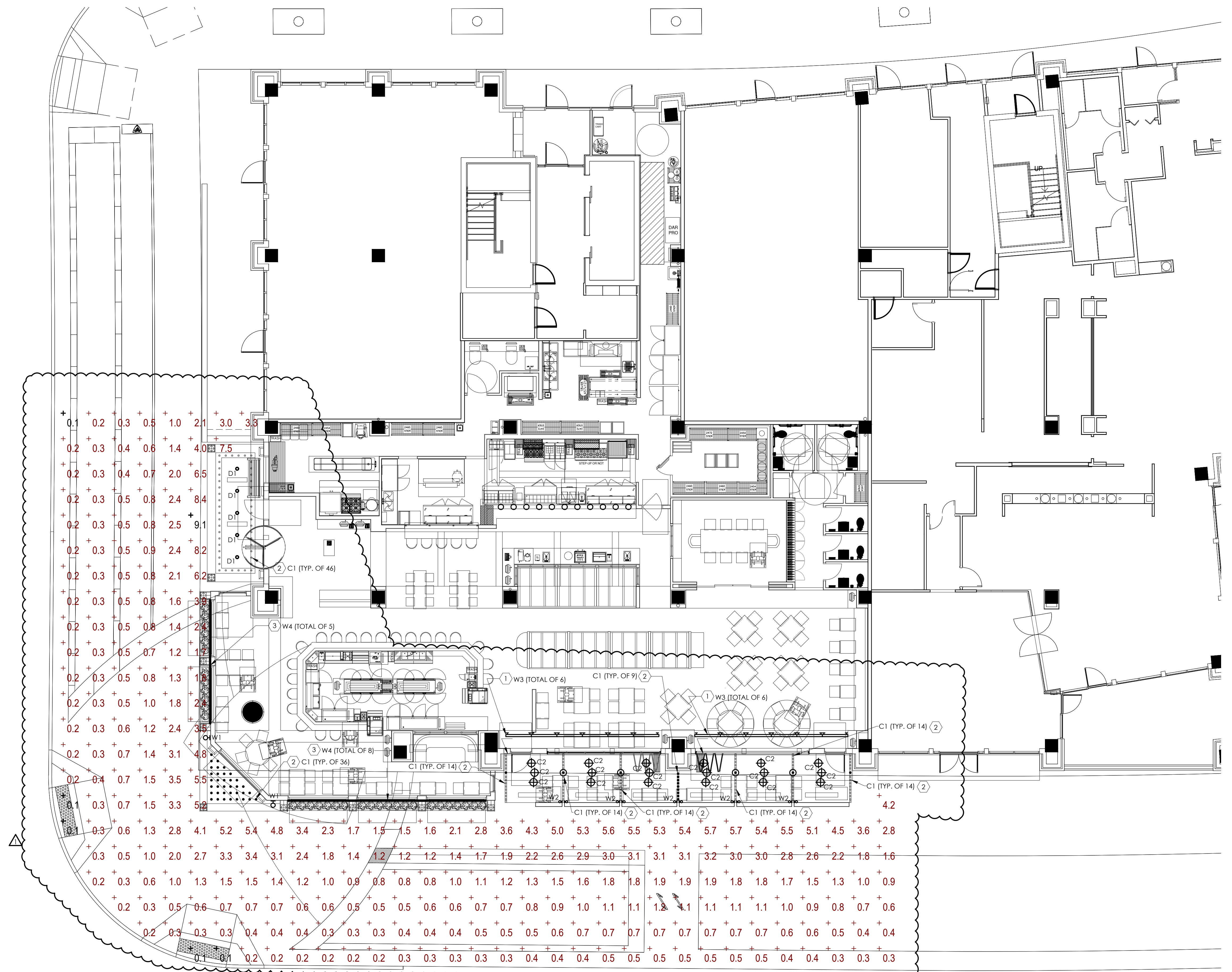
Copyright 2021
 All drawings are the property of
 Sean Carter Regal Architects, Inc.
 and may not be used, reproduced, altered,
 or copied without the written consent of the architect.

BALTIMORE CORNER RESTAURANT
 4595 BRIDGE PARK AVENUE
 DUBLIN, OHIO 43017
 FOR
CAMERON MITCHELL RESTAURANTS
 390 WEST NATIONWIDE BOULEVARD, COLUMBUS, OHIO 43215

| DRAWING STATUS | | DATE |
|----------------|--|-------------------|
| STATUS | | |
| PRELIMINARY | | FEBRUARY 15, 2021 |
| REVISION #1 | | MARCH 11, 2021 |

DRAWING TITLE
**EXTERIOR
 PHOTOMETRIC
 PLAN**

DRAWING NUMBER
SE-0.1
SEAN #00000.00



- ELECTRICAL CODED NOTES**
1. FIXTURE TO BE LOCATED ABOVE AWNING, WALL MOUNTED, AND DIRECTED DOWNWARD TO ILLUMINATE THE TOP OF THE AWNING.
 2. OPEN LAMP EDISON, LED FIXTURE TO BE MOUNTED TO BOTTOM OF STRUCTURE.
 3. FIXTURE TO BE RECESSED IN WALL AND DIRECTED DOWNWARD TO ILLUMINATE WALL FACADE.

Statistics

| Description | Symbol | Avg | Max | Min | Max/Min | Avg/Min |
|-------------|--------|--------|--------|--------|---------|---------|
| Walkway | + | 1.5 fc | 9.1 fc | 0.1 fc | 91.0:1 | 15.0:1 |

Schedule

| Symbol | Label | QTY | Manufacturer | Catalog Number | Description | Number Lamps | Lumens per Lamp | Lumen Multiple | LLF | Wattage | Efficiency |
|--------|-------|-----|-------------------|---|--|--------------|-----------------|----------------|-----|---------|------------|
| C1 | | 175 | | | 40W equivalent, Edison style Lamp, with CLEAR LENS Holder Rated 5 watt dimmable, 2200K CCT | 1 | 450 | 1 | 1 | 5 | 100% |
| C2 | | 18 | KICHLER HALLERON | 49603LD | 25W equivalent, CANDELBRA Lamp, with CLEAR LENS Rated 5.5 watt dimmable, 2700K CCT | 3 | 450 | 1 | 1 | 6 | 100% |
| D1 | | 5 | Lithonia Lighting | LDN6 27/10 L06WR | 6IN LDN, 2700K, 1000LM, WHITE, CR180 | 1 | 827 | 1 | 1 | 10.5 | 100% |
| W1 | | 2 | KICHLER COURTYARD | 9000BK1 | 25W equivalent, CANDELBRA Lamp, with CLEAR LENS Rated 5.5 watt dimmable, 2700K CCT | 3 | 450 | 1 | 1 | 15 | 100% |
| W2 | | 5 | TROY LIGHTING | OWINGS MILL OUTDOOR | 25W equivalent, CANDELBRA Lamp, with CLEAR LENS Rated 5.5 watt dimmable, 2700K CCT | 4 | 450 | 1 | 1 | 20 | 100% |
| W3 | | 12 | National LED | Linear Star 4' sections | Luminaire LED, Inc. - 4' wall mounted to illuminate awning | 1 | 85 | 1 | 1 | 16.8 | 100% |
| W4 | | 13 | Lumenpulse | Linear 4' sections LXT-RO-120-48-27K-UMAS | Luminaire LED, Inc. - 4' wall mounted to illuminate awning | 1 | 98 | 1 | 1 | 20 | 100% |

EXTERIOR SITE PHOTOMETRIC PLAN
 SCALE: 1/16" = 1'-0"