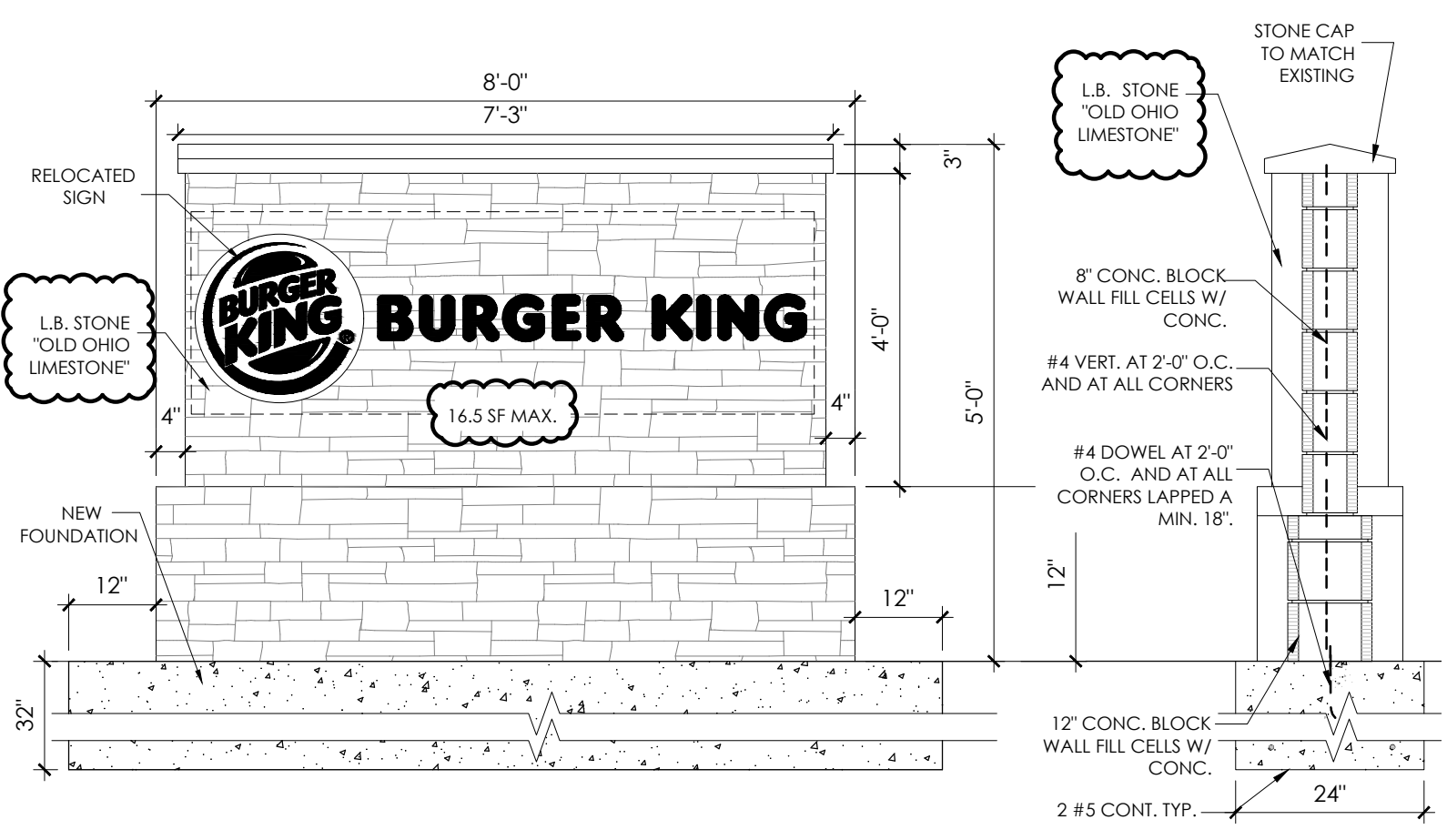
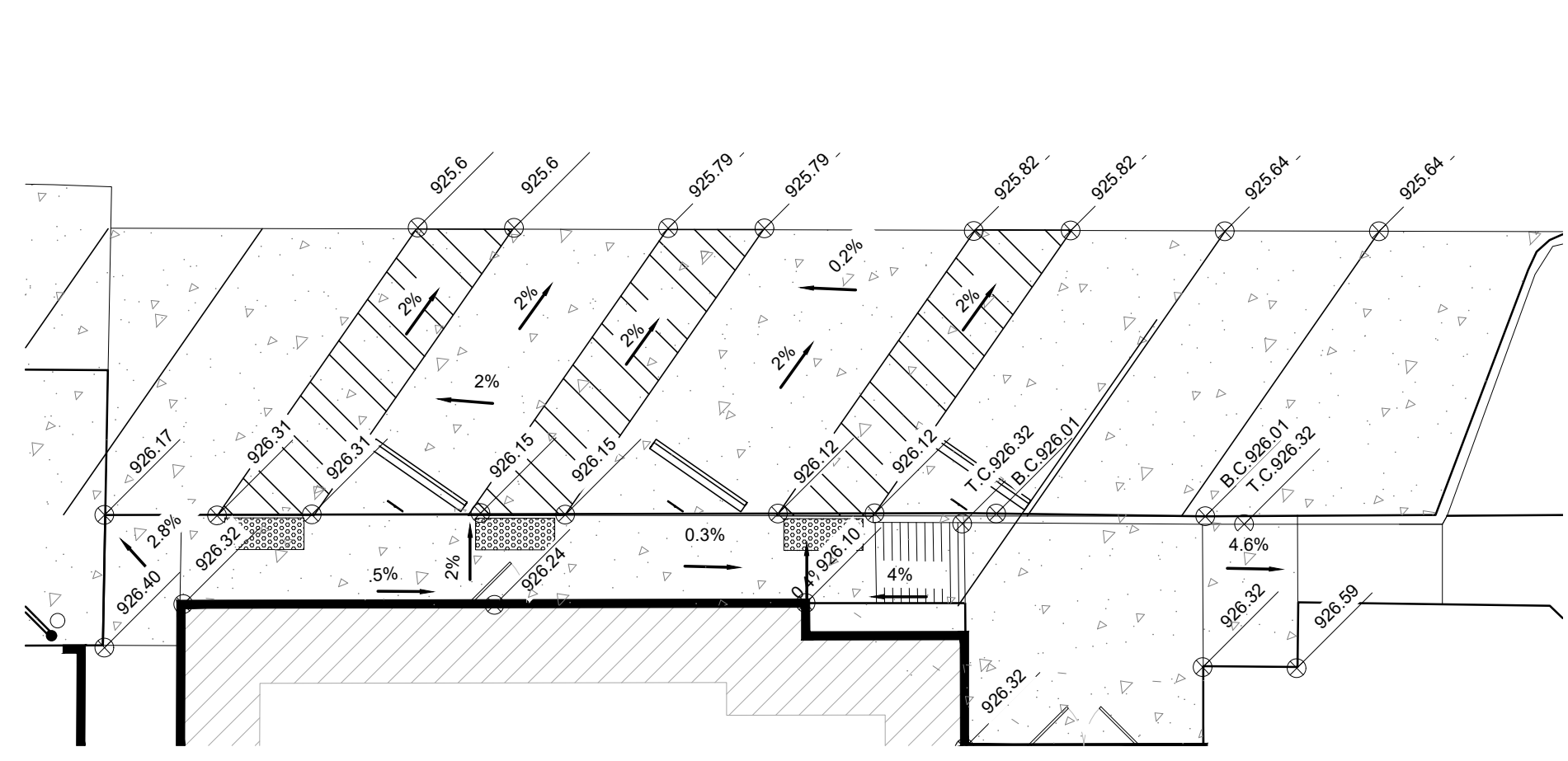


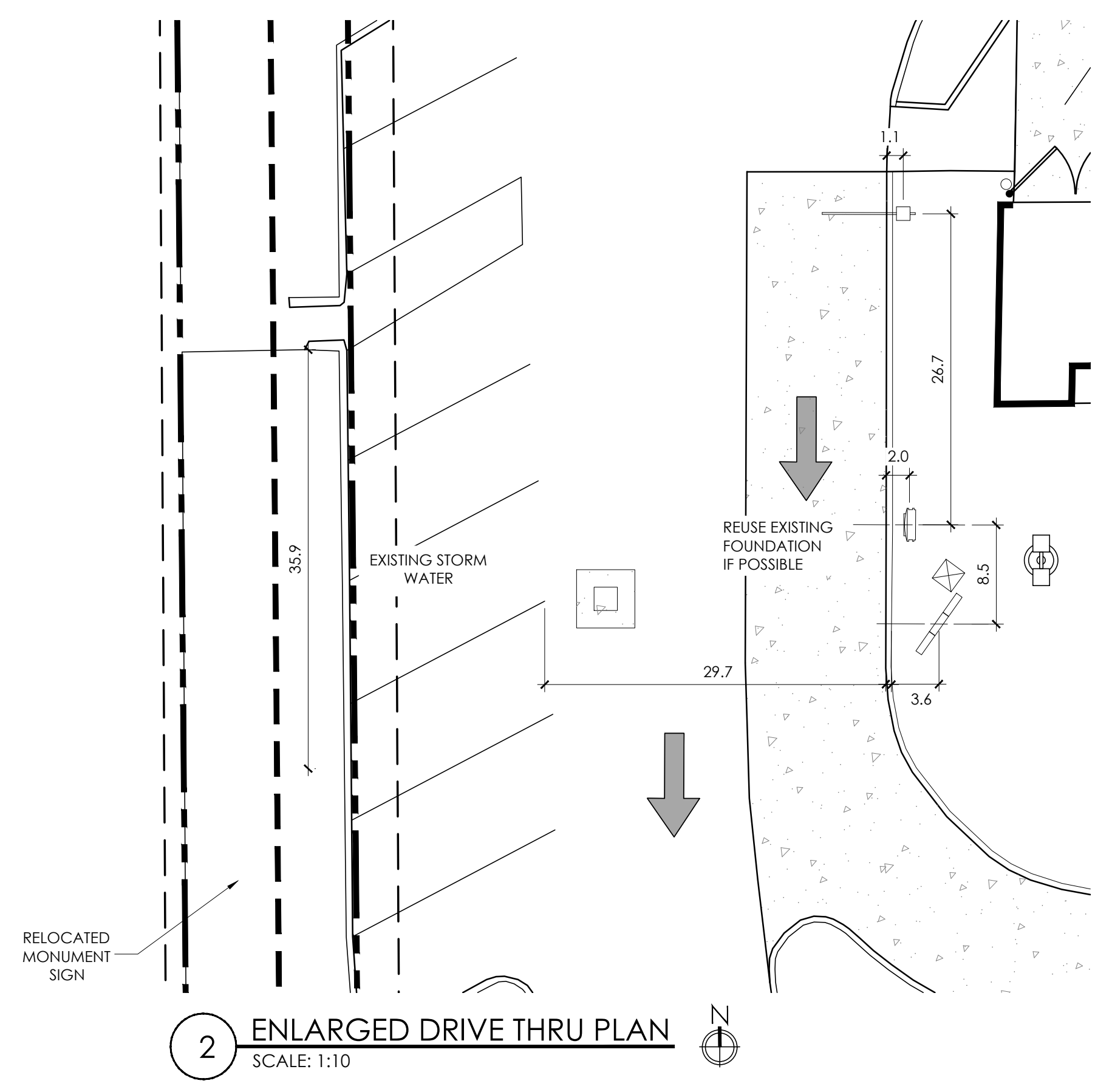
1 PROPOSED SITE PLAN
SCALE: 1:16



4 MONUMENT SIGN DETAIL
SCALE: 3/4"=1'-0"



3 ADA GRADING PLAN
SCALE: 1:10



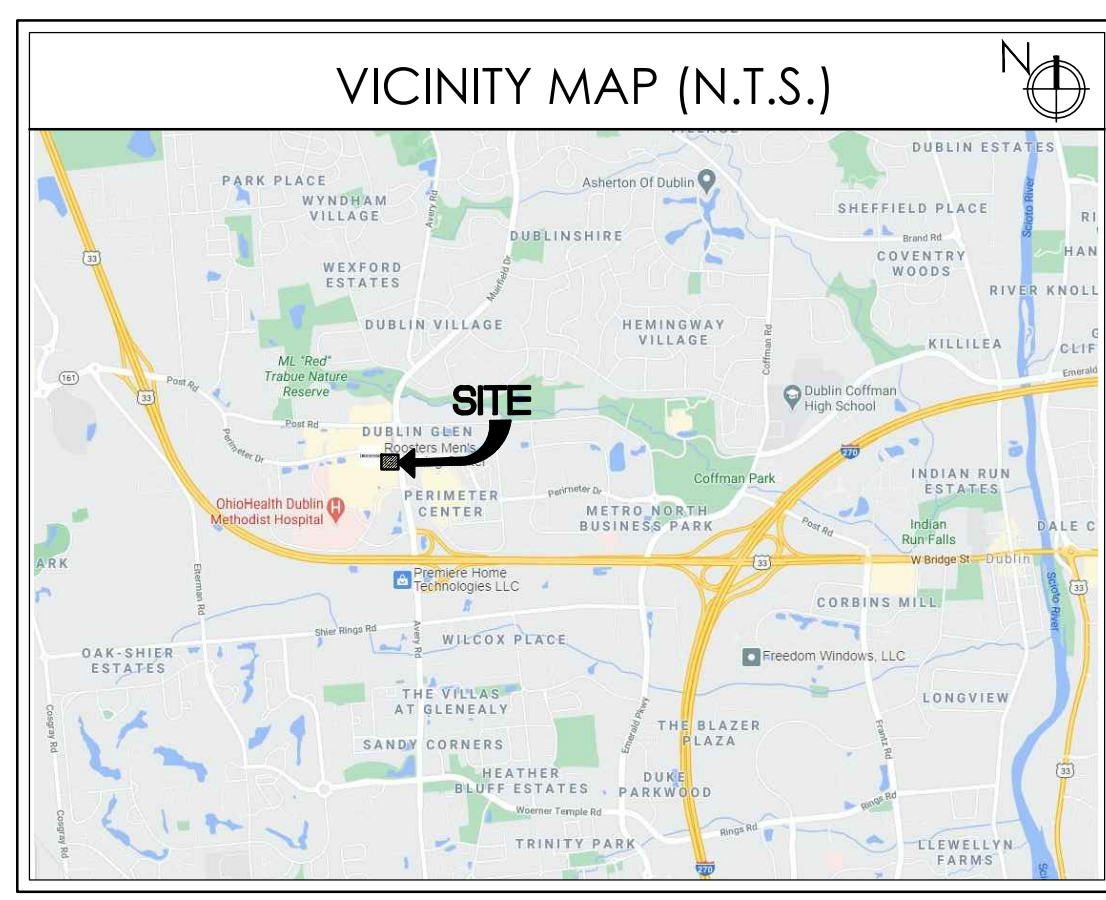
2 ENLARGED DRIVE THRU PLAN
SCALE: 1:10

GENERAL SIGNAGE NOTES

- SIGN INSTALLER RESPONSIBILITIES:
1. PROVIDE ALL DRAWINGS NECESSARY FOR SIGN PERMITS.
 2. APPLY FOR, OBTAIN, AND PAY FOR ALL REQUIRED SIGN PERMITS.
 3. COORDINATE EXCAVATION OF SIGN FOUNDATIONS WITH G.C.
 4. SET ANCHOR BOLTS OR BASE PLATES AS REQUIRED.
 5. COMPLETE SIGN INSTALLATION.
 6. REMOVE EXCESS DEBRIS, ROUGH GRADE AREA FOR LANDSCAPING.
- GENERAL CONTRACTOR:
1. COORDINATE EXCAVATION OF SIGN FOUNDATIONS WITH SIGN SUPPLIER.
 2. PROVIDE POWER TO ALL SIGN LOCATIONS AS REQUIRED.
 3. MAKE FINAL ELECTRICAL CONNECTIONS TO EACH SIGN.

PROPOSED SCOPE OF WORK

- INSTALL NEW CONCRETE DOUBLE DRIVE THRU LANE.
- OVERLAY ASPHALT PARKING LOT AND RE-STRIPE AS PER LAYOUT.
- INSTALL CLEARANCE SIGN 20/20, REFER TO SHEET C-3. VERIFY IF EXISTING FOUNDATION CAN BE UTILIZED.
- INSTALL DT CANOPY W/ INTERNAL OCU & BURY CONDUITS. (REUSE EXST FOUNDATION IF POSSIBLE) REFLECT NEW IMAGE, REFER TO SHEET C-3 FOR DETAIL.
- INSTALL NEW DIGITAL MENU BOARD AS PER MANUFACTURER'S SPECIFICATIONS. RUN NEW ELECTRICAL AND CATS AS NEEDED. REFER TO SHEET C-4, REUSE EXST FOUNDATION IF POSSIBLE.
- INSTALL NEW LOOPS AT OCUS AND PAY WINDOW.
- REPAIR CATCH BASINS/DRAINAGE STRUCTURE AND INSTALL NEW CONC. APRONS. SEE DETAIL ON SHEET C-3.
- RE-STRIPE ACCESSIBLE PARKING STALLS AS PER PLAN. REFER TO SHEET C-3 SITE DETAILS.
- INSTALL & SECURE NEW WHEEL STOPS, SIGNAGE, AND TRUNCATED DOMES AT ADA/ANSI SPACES.
- INSTALL SLEEVES OVER BOLLARDS.
- PRESSURE CLEAN SIDEWALKS.
- PROVIDE DRIVE THRU MARKINGS AND ARROWS PER LAYOUT.
- PAINT LIGHT POLES BLACK.
- TUCK POINT CMU DUMPSTER AND CAP.
- REPAIR STONE PIERS ALONG AVERY MUIRFIELD DRIVE.
- INSTALL NEW SHIELDS FOR LIGHTS.
- REPAIR GAPS SIDEWALK TO MEET ADA REQUIREMENTS. VFY LOCATIONS W/ OWNER.
- REPAIR IRRIGATION SYSTEM. (\$5000 ALLOWANCE)
- INSTALL NEW LANDSCAPING. SEE SHEET LS-1.
- INSTALL TIMECLOCK AND PHOTOCCELL ON ROOF FOR ALL EXTERIOR LIGHTS AND SIGNAGE.
- INSTALL NEW MONUMENT SIGN NEAR SHOPPING CENTER PARKING LOT. GC TO PROVIDE FOUNDATION AND ELECTRICAL.

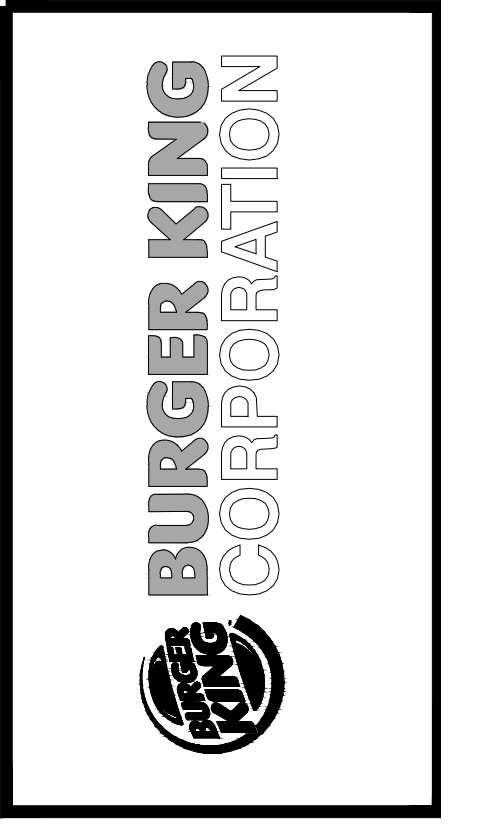


SITE AREA

BUILDING AREA:	4510 SF
NUMBER OF PARKING SPACES:	45
NUMBER OF HANDICAP SPACES:	3 (1 VAN ACCESSIBLE)

No.	Date	By	Notes
1	3.4.21	DB	FOR SUBMITTAL TO PLANNING
2	4.14.21	DB	FOR SUBMITTAL TO PLANNING

Drawn By: DB
Checked: SB
Scale: AS NOTED
Date: 1.16.21



TECHNICAL GROUP, Inc.
FAIRMINGTON HILLS, MI 48331
P: (248) 426-6000 F: (248) 426-7004



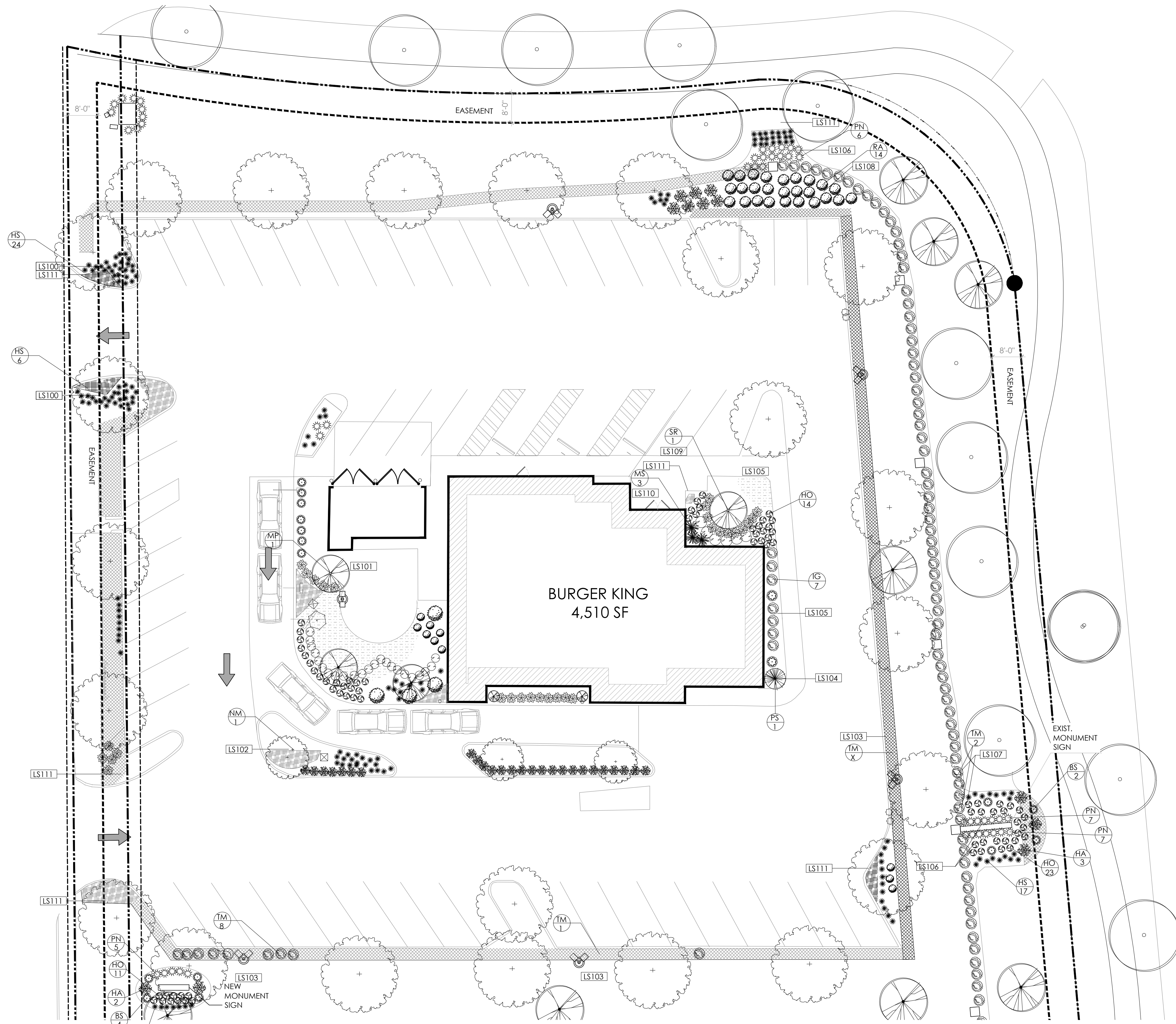
PROJECT: BURGER KING #13487
6315 PERIMETER DR.
DUBLIN, OH 43016

SHEET TITLE: PROPOSED SITE PLAN

JOB #: TG-20632

SHEET: C-2

DO NOT SCALE THIS PRINT. USE FIGURED DIMENSIONS ONLY.



1 PROPOSED LANDSCAPE PLAN
SCALE: 1:16

PLANT LISTING						
KEY	QTY	COMMON NAME	BOTANICAL NAME	MATURE SIZE		SIZE
				HEIGHT	SPACING	
ANN		ANNUALS				
BS	6	BLUE MIST SPIREA	CARYOPTERIS X CLANDONENSIS 'BLUE'	3'-5'	3'-5'	#1 GAL
HO	48	ELEGANS HOSTA	HOSTA S. 'ELEGANS'	2'-3'	2'-3'	24" HT.
HA	5	HYDRANGEA ADORSCENS	ANNABELLE HYDRANGEA	3'-5'	3'-5'	36" HT.
HS	48	HAPPY RETURNS DAYLILY	HEMEROCALLIS 'HAPPY RETURNS'	8"-12"	10"-16"	#1 GAL
IG	24	NORDIC INKBERRY	ILEX GLABRA 'CHAMZIN'	3'-4"	3'-4"	#3 GAL
MP	1	PRAIRIFIRE CRAB TREE	MALUS 'PRAIRIFIRE'	15'-20'	15'-20'	2' CAL.
MS	3	MAIDEN GRASS	MISCANTHUS SINENSIS 'GRACILLIMUS'	5'-6"	3'-6"	#3 GAL
PN	19	DWF. FOUNTAIN GRASS	PENNISETUM ALOPECUROIDES 'HAMELN'	2'-3"	1'-2"	#3 GAL
PS	1	WEeping WHITE PINE	PINUS STRUBUS 'PENDULA'	12'	12'	5'-0" HT.
RA	14	GROW LOW SUMAC	RHUS AROMATICA 'GRO-LOW'	2'-3"	6'-8"	#3 GAL
SR	1	L.S. TREE LILAC	SYRINGA RETICULATA 'IVORY SILK'	15'-25'	10'-15'	2' CAL.
TM	11+	D.S. YEW	TAXUS M. 'DENSIFORMIS'	2'-3"	3'-6"	24" HT.
NM	1	CLEVELAND NORWAY MAPLE	ACER PLATANOIDES 'CLEVELAND'	40'-50'	30'-50'	2' CAL.

- SCOPE OF WORK PROPOSED**
- LS100 PLANT MISSING DAYLILIES.
 - LS101 PLANT MISSING CRABAPPLE TREE.
 - LS102 PLANT MISSING NORWAY MAPLE.
 - LS103 REPLACE MISSING YEW.
 - LS104 PLANT MISSING WEEPING WHITE PINE.
 - LS105 PLANT MISSING INKBERRY SHRUBS AND HOSTAS.
 - LS106 PLANT MISSING FOUNTAIN GRASS.
 - LS107 REMOVE DEAD YEW AND PLANT NEW.
 - LS108 PLANT MISSING SUMAC.
 - LS109 PLANT MISSING LILAC TREE.
 - LS110 PLANT MISSING MAIDEN GRASS.
 - LS111 PLANT ANNUALS WHEN WEATHER PERMITS.

LANDSCAPE NOTES:

PLANTING:

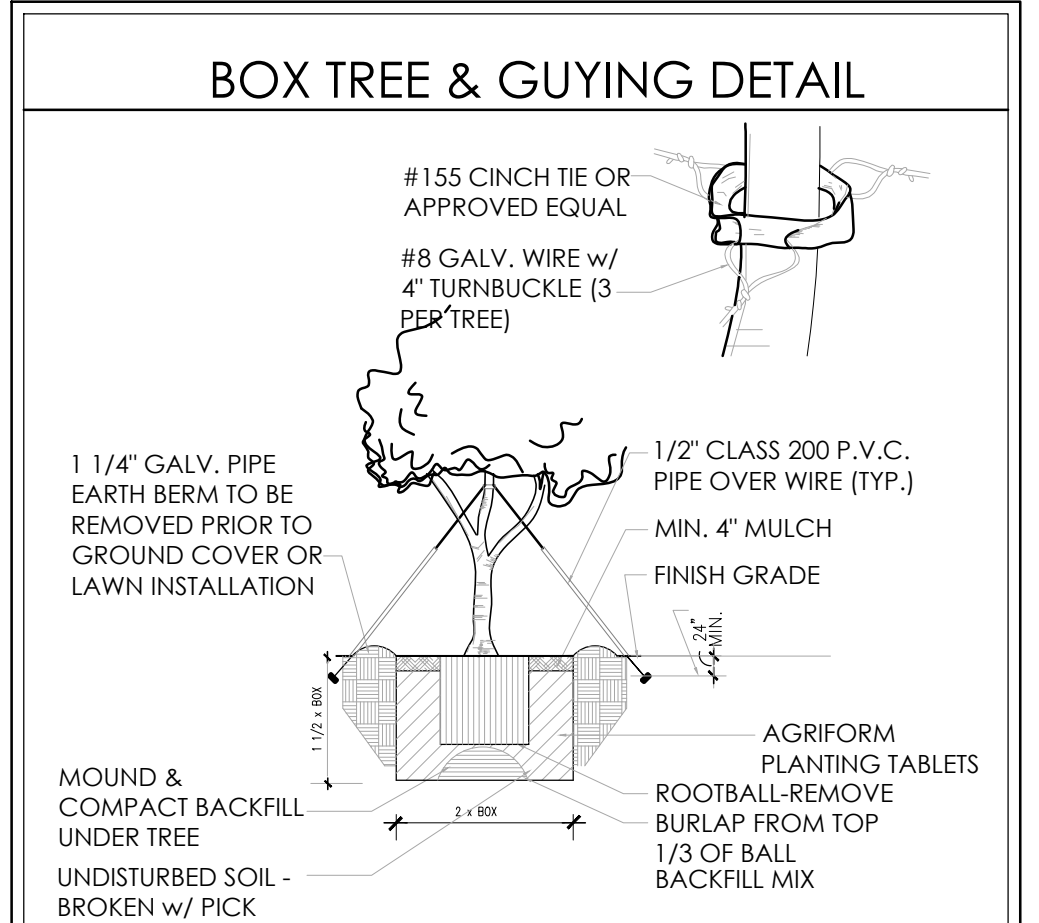
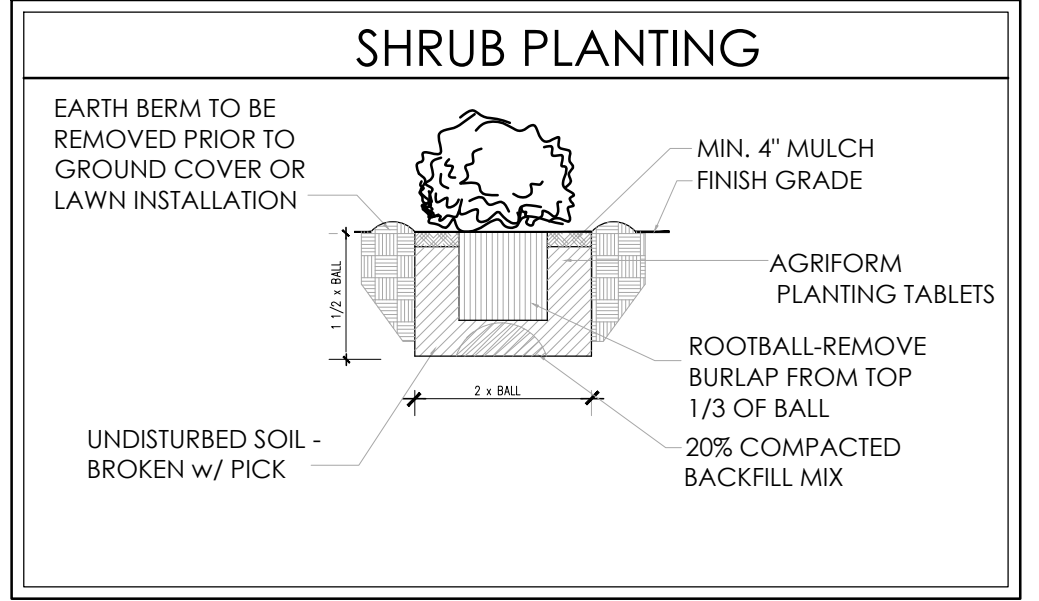
- INSTALLATION OF ALL PLANT MATERIALS SHALL BE IN ACCORDANCE WITH THE LATEST EDITION OF THE AMERICAN ASSOCIATION OF NURSERYMEN LANDSCAPE STANDARDS AND WITH THE SPECIFICATIONS SET FORTH BY THE CITY OF DUBLIN, OHIO.
- IT IS THE RESPONSIBILITY OF THE PROPERTY OWNER TO MAINTAIN THE LANDSCAPING INSTALLED SO THAT IT IS HEALTHY, NEAT AND ORDERLY IN APPEARANCE AND IS FREE FROM REFUSE AND DEBRIS.
- ALL PLANTINGS SHALL BE COMPLETED WITHIN THREE (3) MONTHS, AND NO LATER THAN NOVEMBER 30, FROM THE DATE OF ISSUANCE OF A CERTIFICATE OF OCCUPANCY IF SUCH CERTIFICATE IS ISSUED DURING THE APRIL 1 - SEPTEMBER 30 PERIOD; IF THE CERTIFICATE IS ISSUED DURING THE OCTOBER 1 - MARCH 31 PERIOD, PLANTING SHALL BE COMPLETED NO LATER THAN THE ENSUING MAY 31; PLANTINGS SHALL THEREAFTER BE REASONABLY MAINTAINED, INCLUDING PERMANENCE AND HEALTH OF PLANT MATERIALS TO PROVIDE A SCREEN TO ADJUTING PROPERTIES AND INCLUDING THE ABSENCE OF WEEDS AND REFUSE.
- ALL PLANTING BEDS TO BE MULCHED WITH FOUR INCHES (4") OF SHREDDED HARDWOOD - NATURAL BROWN MULCH OVER TYRAX WEED BARRIER OR APPROVED EQUIVALENT. PLANTING BEDS TO HAVE ONE-EIGHTH BY FOUR INCH (1/8"x4") BLACK ANODIZED PERMA-LOC ALUMINUM EDGING, OR APPROVED EQUIVALENT, ON BORDERS.
- DIG SHRUB PITS ONE FOOT (1') LARGER THAN THE SHRUB ROOTBALL, TREE PITS TWO FOOT(2') THAN TREE ROOTBALLS AND BACKFILL WITH ONE (1) PART TOP SOIL AND ONE(1) PART SOIL FROM EXCAVATED PIT.
- REMOVE TWINE AND WIRE FROM ROOTBALL AND PLANT TOPS.
- ORGANIC FRIABLE TOPSOIL SHALL BE EVENLY DISTRIBUTED AND FINE GRADED OVER ALL AREAS TO RECEIVE LAWNS AT UNIFORM DEPTH OF FOUR INCHES AFTER SETTLEMENT.
- ALL NEW LAWN AREAS SHALL BE SODDED WITH A GRADE A SOD PLANTED OVER THE TOPSOIL.
- TREES IN LAWN AREAS TO HAVE A THREE FOOT (3') CIRCLE OF MULCH SIX INCHES (6") DEEP, (HARDWOOD - NATURAL DARK BROWN).
- TOPSOIL SHALL BE FERTILE, FRIABLE, AND REPRESENTATIVE OF PRODUCTIVE SOIL, CAPABLE OF SUSTAINING VIGOROUS PLANT GROWTH AND SHALL BE DARK ORGANIC NATURAL SURFACE SOIL, EXCLUSIVE OF PEAT, MUCK, AND/OR DARK BROWN OR BLACK LOAM, CLAY LOAM, SILT LOAM, OR SANDY LOAM.
- REQUIRED LANDSCAPE MATERIAL SHALL SATISFY AMERICAN ASSOCIATION OF NURSERYMEN STANDARDS AND BE:

MATERIALS:

- * PLANT MATERIAL SIZES (MINIMUM)
- EVERGREEN TREES..... 6' MIN. HEIGHT
- DECIDUOUS TREES..... 2 1/2" CALIPER
- SMALL DECIDUOUS TREES..... 1-3/4" CALIPER
- LARGE EVERGREEN SHRUBS..... 2 - 3' HEIGHT
- DECIDUOUS SHRUBS..... 2 - 3' SPREAD
- EVERGREEN SHRUBS..... 18" - 24" SPREAD
- GROUND COVER..... 18" - 24" SPREAD

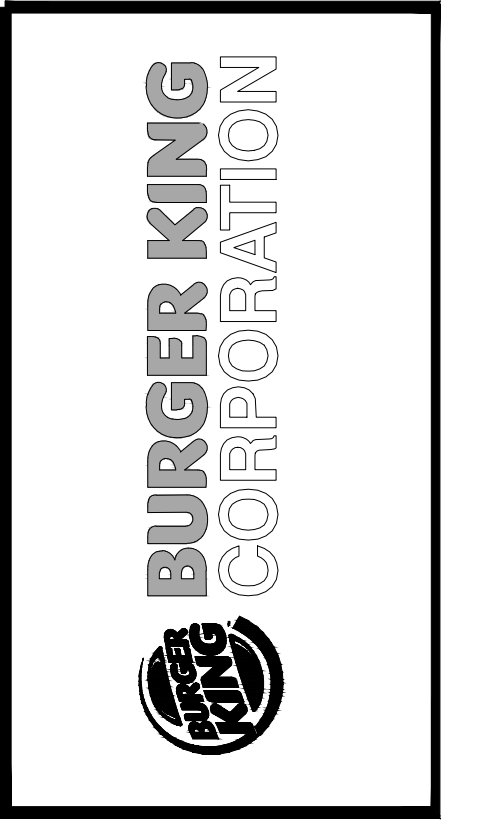
GENERAL:

- ALL LANDSCAPED AREAS SHALL BE EXCAVATED OF ALL BUILDING MATERIAL AND DEBRIS TO A MINIMUM DEPTH OF EIGHTEEN INCHES (18") AND BACKFILLED WITH A MEDIUM TEXTURED PLANTING SOIL. ALL LANDSCAPED AREAS ARE TO HAVE MINIMUM SIX INCHES (6") OF TOPSOIL AND ARE TO BE CROWNED A MINIMUM SIX INCHES (6") HIGHER THAN ADJACENT CURBS AND SIDEWALKS.
- ALL WRITTEN DIMENSIONS OVERRIDE SCALE DIMENSIONS ON PLAN.
- REPORT ALL CHANGES, SUBSTITUTIONS, OR DELETIONS TO THE ARCHITECT.
- ALL BIDDERS MUST INSPECT THE SITE AND REPORT ANY DISCREPANCIES TO THE ARCHITECT.
- ALL SPECIFICATIONS SUBJECT TO CHANGE DUE TO EXISTING SITE CONDITIONS.
- THE LANDSCAPE ARCHITECT RESERVES THE RIGHT TO APPROVE ALL PLANT MATERIAL.
- DO NOT PLANT DECIDUOUS OR EVERGREEN TREES DIRECTLY OVER UTILITY LINES. MAINTAIN A FIVE FOOT (5') DISTANCE FROM CENTER OF UTILITIES FOR PLANTING HOLES. CALL MISS DIG FORTY-EIGHT (48) HOURS PRIOR TO LANDSCAPE CONSTRUCTION FOR FIELD LOCATION OF UTILITY LINES. MEASUREMENT AND QUANTITIES ARE ESTIMATES ONLY AND CONTRACTOR IS RESPONSIBLE FOR HIS/HER OWN QUANTITIES. LANDSCAPE CONTRACTOR SHALL BE RESPONSIBLE FOR 100% OF SOD REQUIRED INCLUDING AREAS IN R.O.W.
- THE INSTALLATION OF SPRINKLERS ARE REQUIRED TO ENSURE THE MAINTENANCE OF ALL LANDSCAPING LOCATED IN PERMANENTLY IMPROVED FRONT YARDS.
- G.C. TO PROVIDE IRRIGATION. IRRIGATION TO BE DESIGNED BY OTHER. RAIN SENSOR & TIMER AS PART OF SPRINKLER SYSTEM DESIGN.



No.	Date	By	Notes
1	3.4.21	DB	FOR SUBMITTAL TO PLANNING
2	4.14.21	DB	FOR SUBMITTAL TO PLANNING

Drawn By: DB
Checked: SB
Scale: AS NOTED
Date: 1.16.21



TECHNICAL GROUP, Inc.
FARMINGTON HILLS, MI 48331
P: (248) 426-8000 F: (248) 426-7004



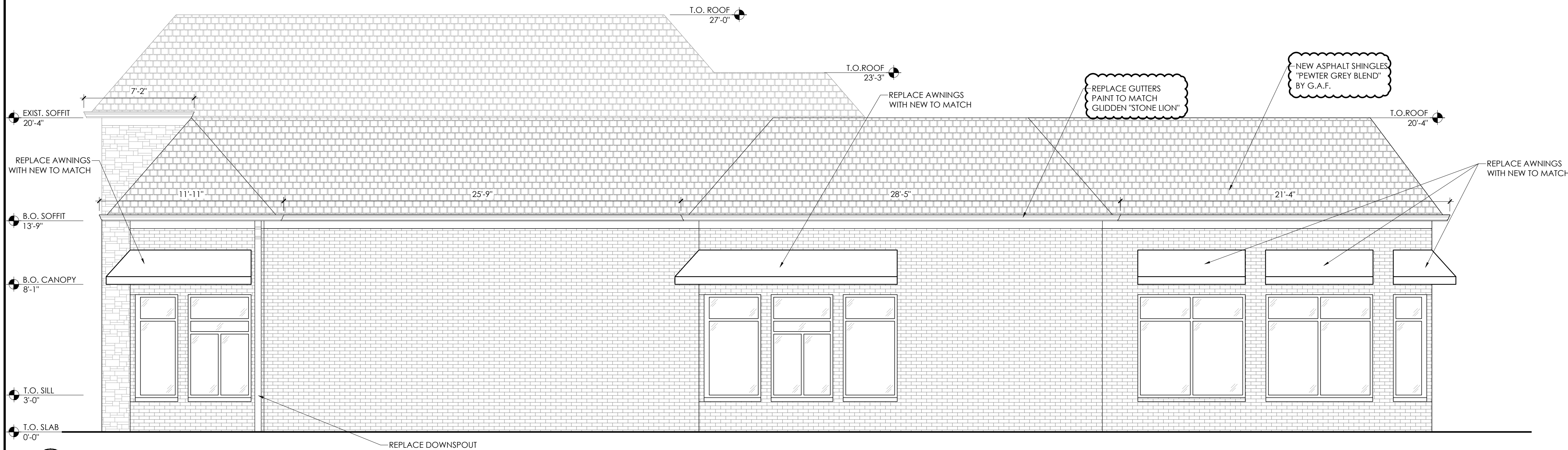
PROJECT: BURGER KING #13487
6315 FERRELLER DR.
DUBLIN, OH 43016

SHEET TITLE: PROPOSED LANDSCAPE PLAN

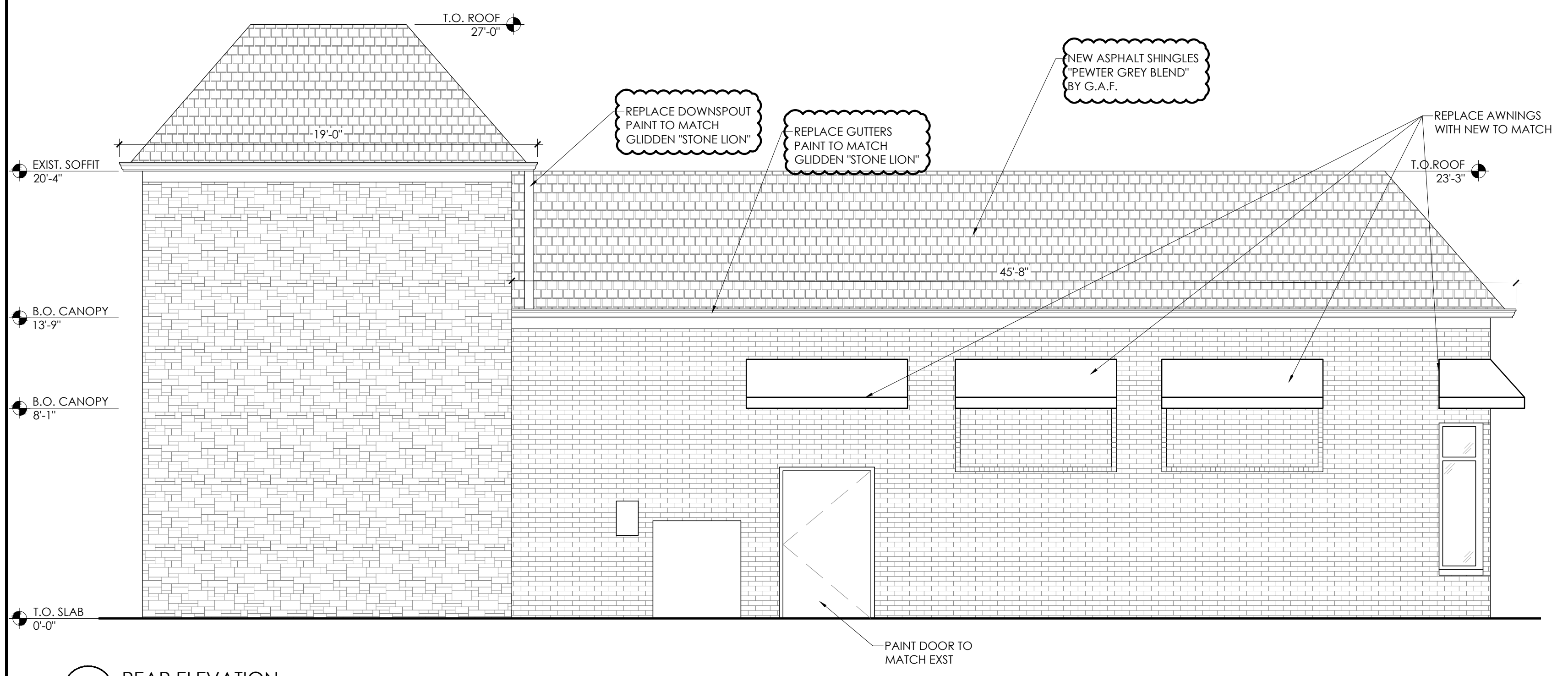
DO NOT SCALE THIS PRINT. USE FIGURED DIMENSIONS ONLY.

JOB # TG-20632

SHEET LS-1



1 DRIVE THRU ELEVATION
SCALE: 1/4" = 1'-0"

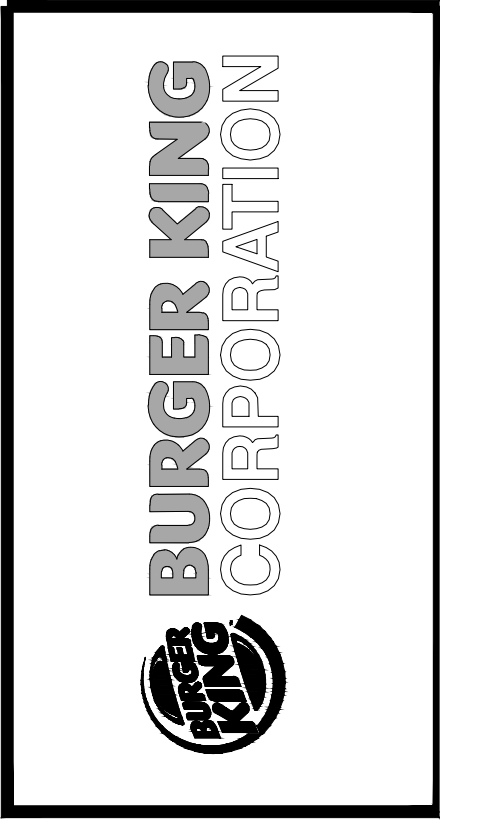


2 REAR ELEVATION
SCALE: 1/4" = 1'-0"

TAG KEY	SECTION TAG	DOOR TAG
	SEE SHEET A-1.1	

No.	Date	By	Notes
1	3.4.21	DB	FOR SUBMITTAL TO PLANNING
2	4.14.21	DB	FOR SUBMITTAL TO PLANNING
Drawn By: DB			
Checked: SB			
Scale: AS NOTED			
Date: 1.16.21			

ALL RIGHTS RESERVED. NO PART OF THESE DRAWINGS OR SPECIFICATIONS MAY BE COPIED, REPRODUCED, OR USED IN CONNECTION WITH ANY WORK, OTHER THAN THE SPECIFIC PROJECT FOR WHICH THEY HAVE BEEN PREPARED, WITHOUT PRIOR WRITTEN AUTHORIZATION FROM THE ARCHITECT.



TECHNICAL GROUP, Inc.
7700 W. STATE ST. SUITE 400
FARMINGTON HILLS, MI 48331
P: (248) 426-6000 F: (248) 426-7004

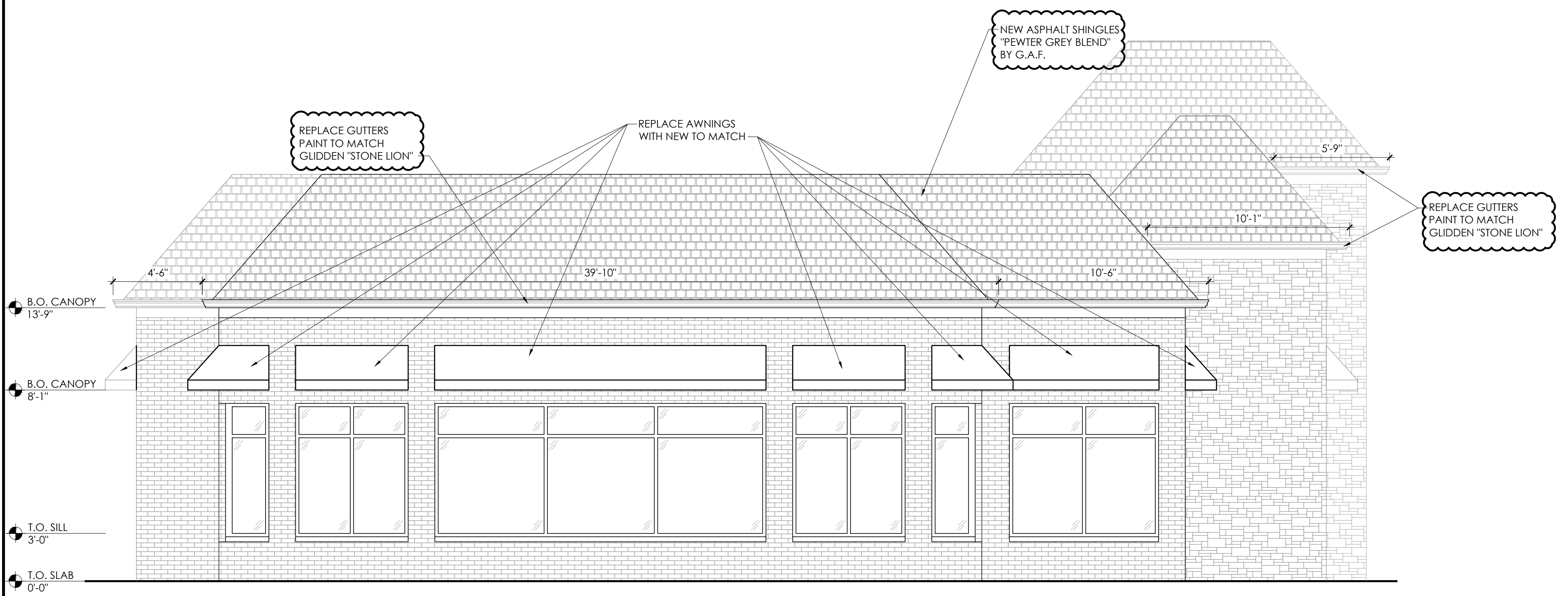


PROJECT BURGER KING #13487 6315 PERIMETER DR. DUBLIN, OH 43016	SHEET TITLE PROPOSED EXTERIOR ELEVATIONS
JOB # TG-20632	
SHEET A-2.1	

DO NOT SCALE THIS PRINT. USE FIGURED DIMENSIONS ONLY.



1 MAIN ENTRY ELEVATION
SCALE: 1/4" = 1'-0"

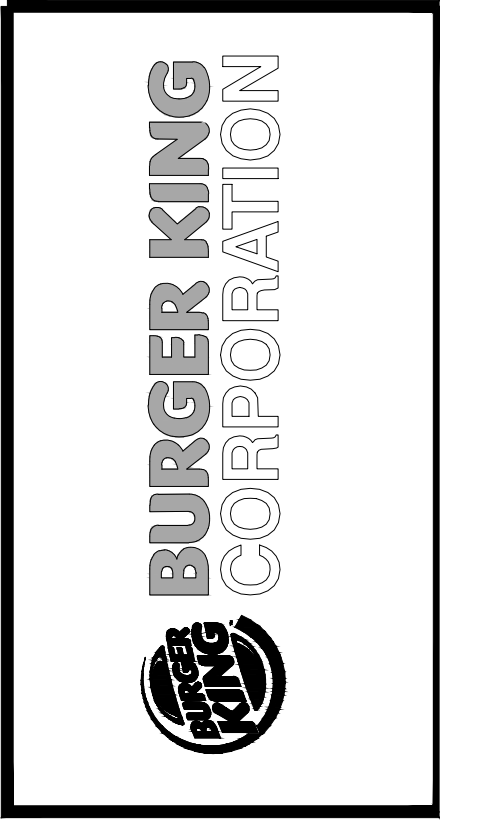


2 FRONT ELEVATION
SCALE: 1/4" = 1'-0"

TAG KEY	SECTION TAG	DOOR TAG
	SEE SHEET A-1.1	

No.	Date	By	Notes
1	3.4.21	DB	FOR SUBMITTAL TO PLANNING
2	4.14.21	DB	FOR SUBMITTAL TO PLANNING
Drawn By: DB			
Checked: SB			
Scale: AS NOTED			
Date: 1.16.21			

ALL RIGHTS RESERVED. NO PART OF THESE DRAWINGS OR SPECIFICATIONS MAY BE COPIED, REPRODUCED, OR USED IN CONNECTION WITH ANY WORK, OTHER THAN THE SPECIFIC PROJECT FOR WHICH THEY HAVE BEEN PREPARED, WITHOUT PRIOR WRITTEN AUTHORIZATION FROM THE ARCHITECT.



TECHNICAL GROUP, Inc.
7700 WILSON ROAD, SUITE 400
FAVINGHAM, OHIO 43123
P: (248) 426-6000 F: (248) 426-7004



PROJECT
BURGER KING #13487
6315 PERIMETER DR.
DUBLIN, OH 43016

SHEET TITLE
PROPOSED EXTERIOR
ELEVATIONS

DO NOT SCALE THIS PRINT. USE FIGURED DIMENSIONS ONLY.

JOB #
TG-20632

SHEET
A-2