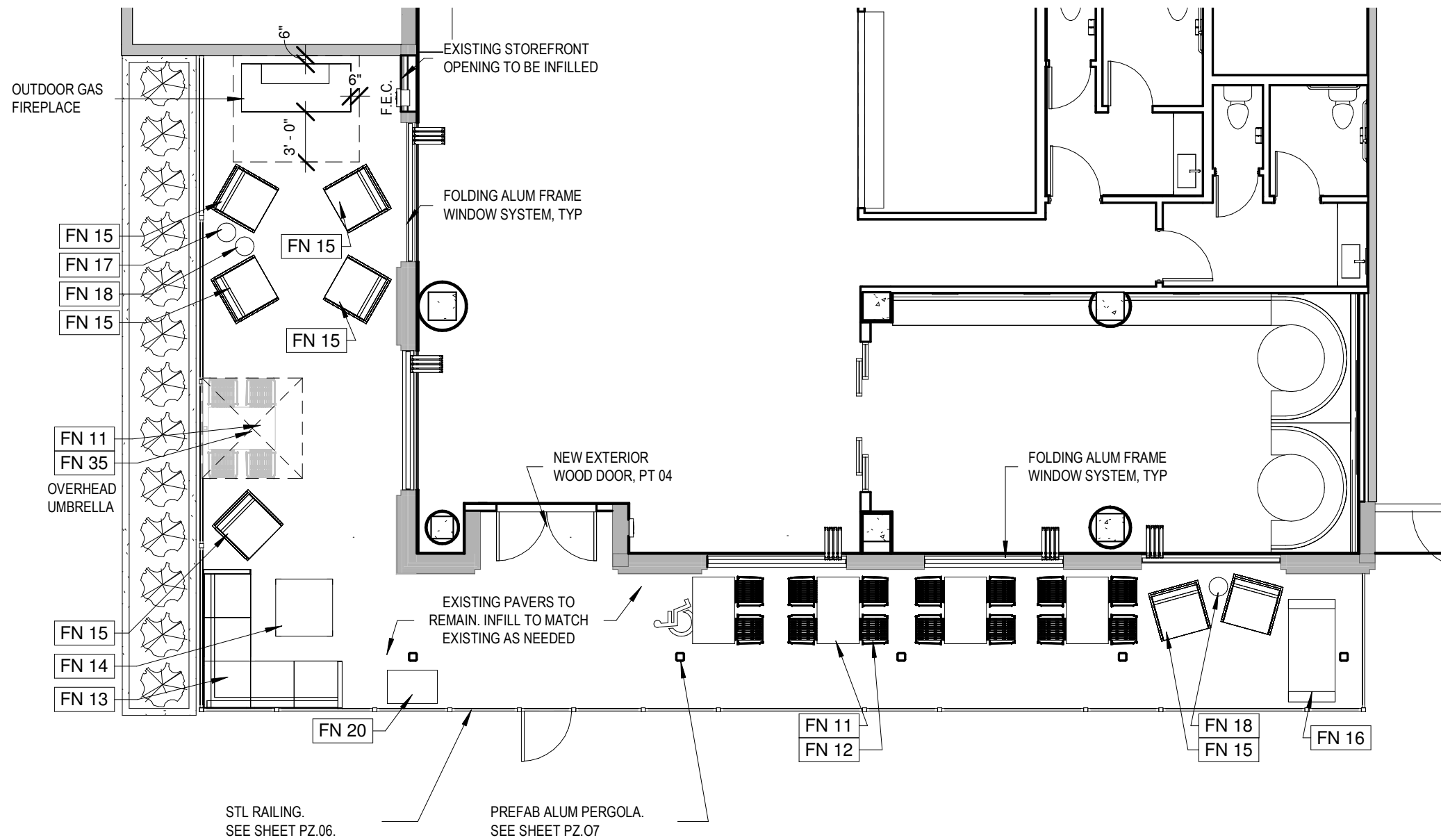


IMPERVIOUS AREA:
154 SF OF UNPAVED AREA TO BE INFILLED WITH PAVERS TO MATCH EXISTING.
135 SF OF NEW LANDSCAPE BED TO REPLACE EXISTING PAVERS.

RIGHT-OF-WAY:
THE SOUTHWEST CORNER OF THE PATIO RAILING ENROACHES ON THE R.O.W. BY A MAXIMUM OF 2'-1", BUT MAINTAINS AN 8'-0" WALKWAY FROM THE PLANTER. THE PERGOLA STRUCTURE (COLUMNS) ARE OUTSIDE OF THE R.O.W. THE PERGOLA ROOF EXTENDS OVER THE R.O.W. BY A MAXIMUM OF 2'-1" (ALIGNED W/ RAILING).

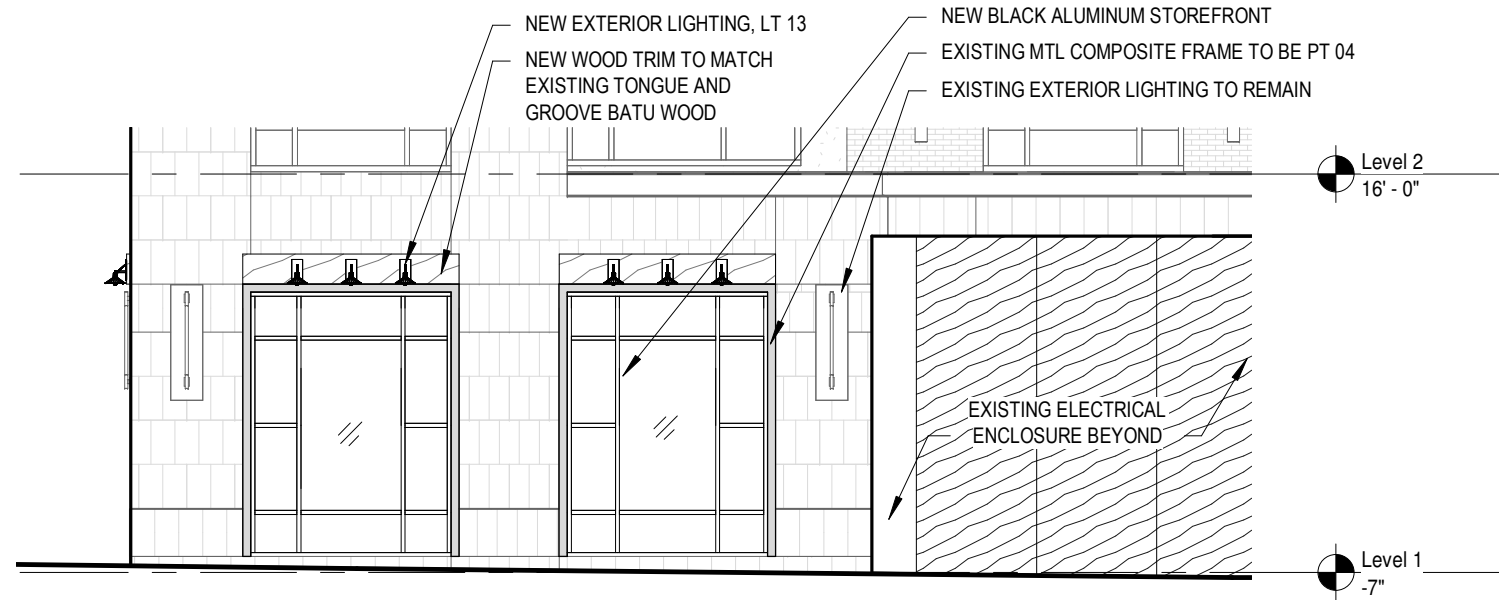
1 SITE PLAN
PZ.01 1/16" = 1'-0"

© 2021 David Kerr Architect, LLC



1 PATIO FURNITURE PLAN
 PZ.02 1/8" = 1'-0"

© 2021 David Kerr Architect, LLC



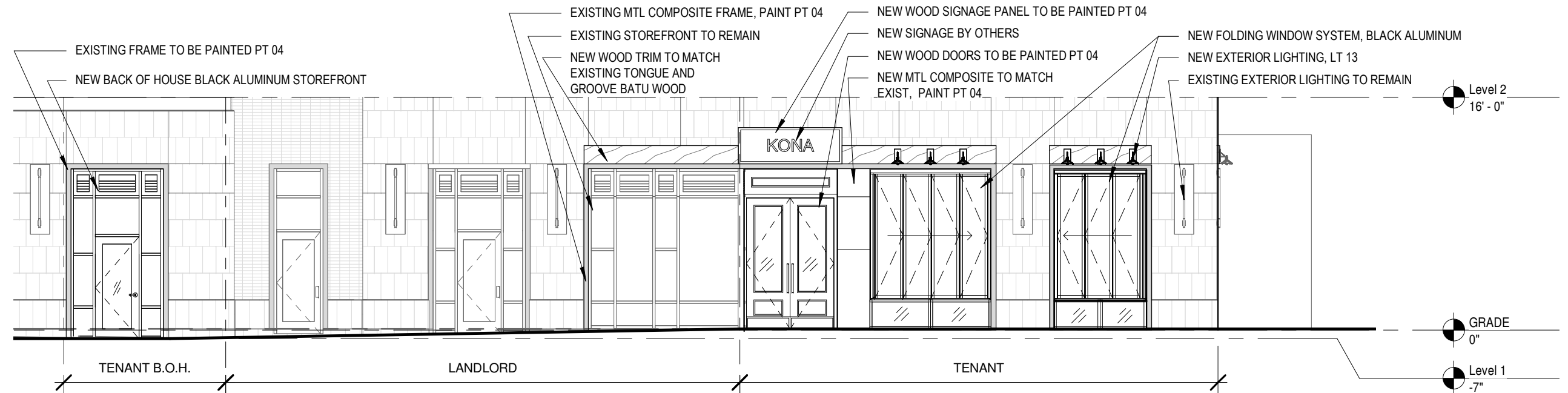
FACADE MATERIALS (NORTH)

	EXISTING FACADE	1ST STORY (W/ TENANT IMPROVEMENT)
PRIMARY LIMESTONE	1,103 SF	(1,103 SF - 48 SF (WOOD TRIM) - 38 SF (INFILL)) = 1,017 SF
PERCENTAGE	13.8%	(1,017 SF / 7,968 SF (OVERALL)) = 12.8%
SECONDARY METAL PANELS	215 SF	(215 SF + 38 SF (INFILL)) = 253 SF
PERCENTAGE	2.7%	(253 SF / 7,968 SF (OVERALL)) = 3.2%

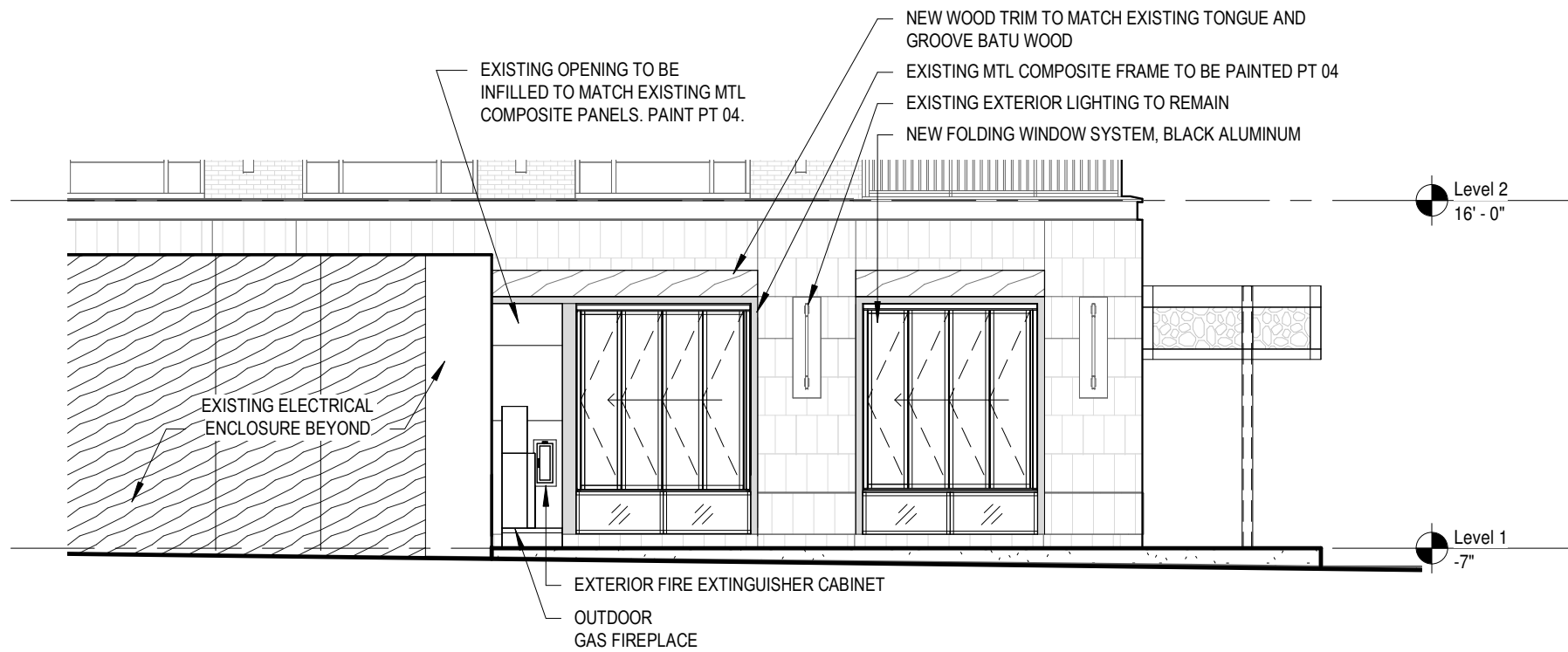
FACADE MATERIALS (EAST)

	EXISTING FACADE	1ST STORY (W/ TENANT IMPROVEMENT)
PRIMARY LIMESTONE	3,334 SF	(3,334 SF - 54 SF (WOOD TRIM)) = 3,280 SF
PERCENTAGE	13.2%	(3,280 SF / 25,205 SF (OVERALL)) = 13.0%
SECONDARY METAL PANELS	947 SF	(947 SF + 25 SF) = 972 SF
PERCENTAGE	3.8%	(972 SF / 25,205 SF (OVERALL)) = 3.9%

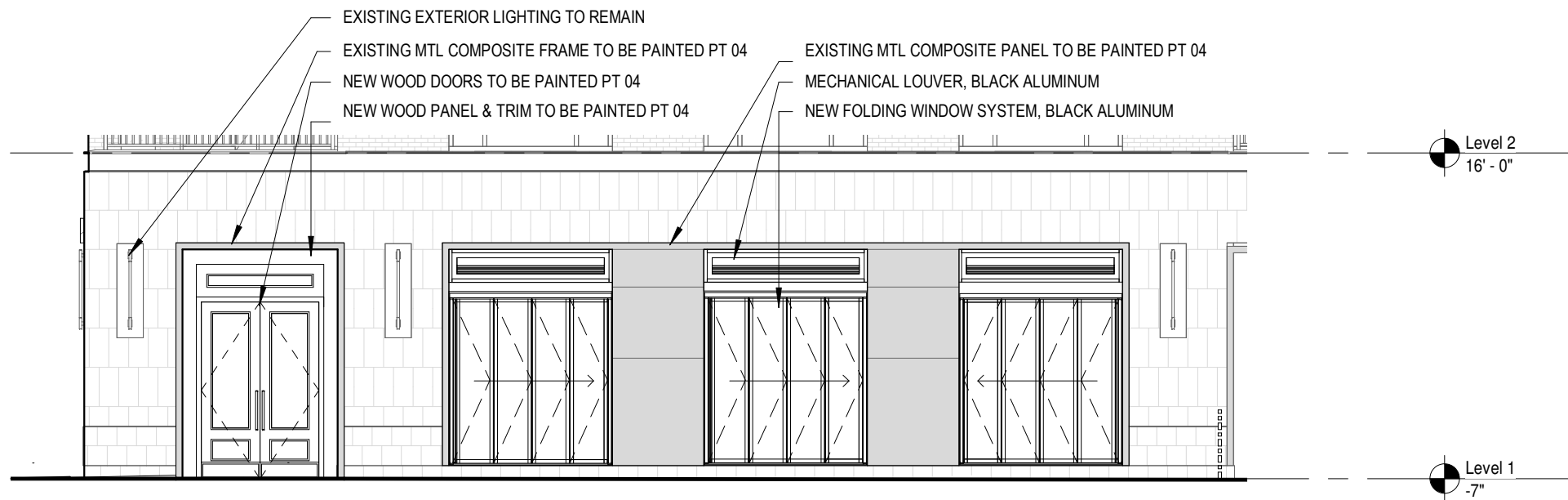
B TENANT FACADE - NORTH (EAST END)
PZ.03 1/8" = 1'-0"



A TENANT FACADE - EAST
PZ.03 1/8" = 1'-0"



B
PZ.04 1/8" = 1'-0"
TENANT FACADE - NORTH (WEST END)



A
PZ.04 1/8" = 1'-0"
TENANT FACADE - WEST

FACADE MATERIALS (WEST)

	EXISTING FACADE	1ST STORY (W/ TENANT IMPROVEMENT)
PRIMARY LIMESTONE PERCENTAGE	2,684 SF 10.5%	SF UNCHANGED PERCENTAGE UNCHANGED
SECONDARY METAL PANELS PERCENTAGE	952 SF 3.7%	SF UNCHANGED - PANELS TO BE PAINTED PERCENTAGE UNCHANGED

FACADE TRANSPARENCY NORTH

	1ST STORY (EXIST)	1ST STORY (W/ TENANT IMPROVEMENT)
STORY AREA:	609 SF	609 SF
TRANSPARENCY:	270 SF	(270 SF - 38 SF (INFILL)) = 232 SF
REQUIRED:	65%	65%
PROVIDED:	44.3%	38.1%

FACADE TRANSPARENCY EAST

	1ST STORY (EXIST)	1ST STORY (W/ TENANT IMPROVEMENT)
STORY AREA:	1,851 SF	1,851 SF
TRANSPARENCY:	1,184 SF	(1,184 SF - 25 SF (INFILL)) = 1,159 SF
REQUIRED:	65%	65%
PROVIDED:	64.0%	62.6%

NOTE: STREET FACADE TRANSPARENCY ON WEST SIDE UNCHANGED.

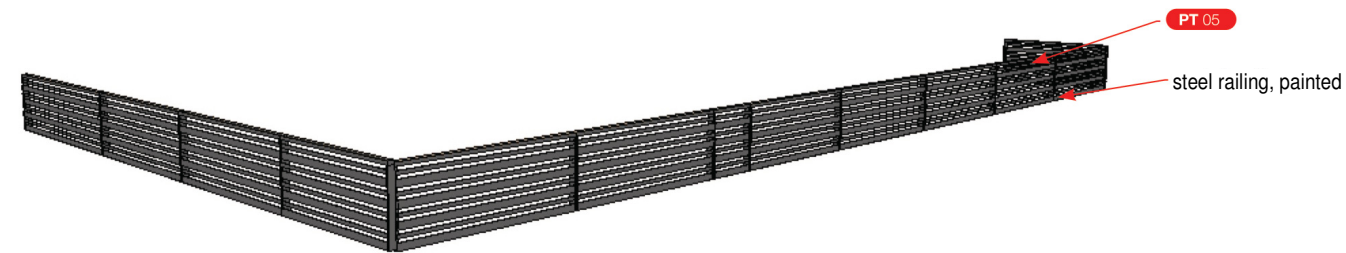


FX 19 Exterior Railing

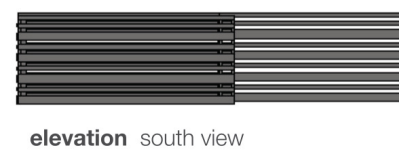
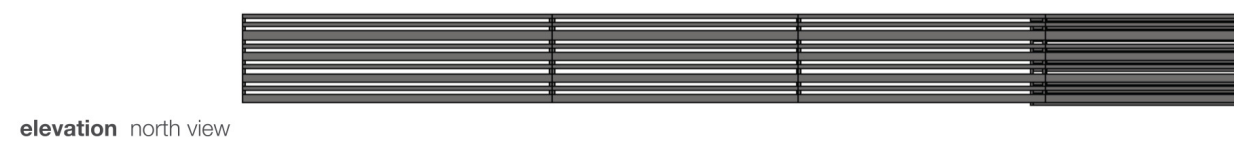
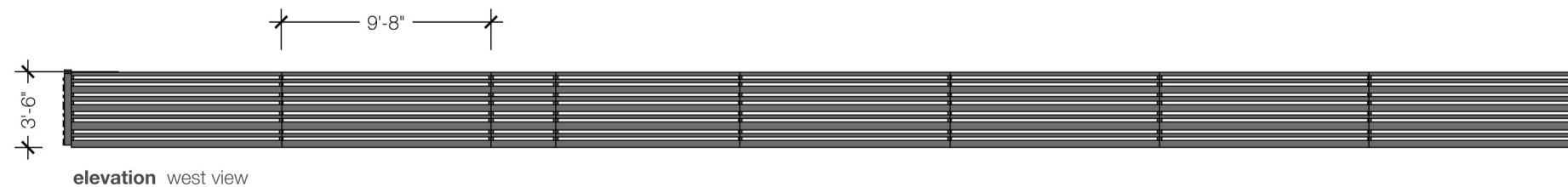
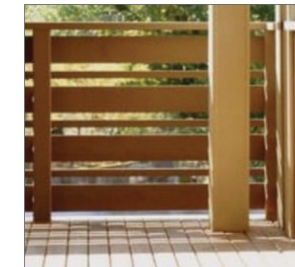
scale 1/8" = 1'-0"

NOTES

- 1. Refer to Architectural Set for final dimensions



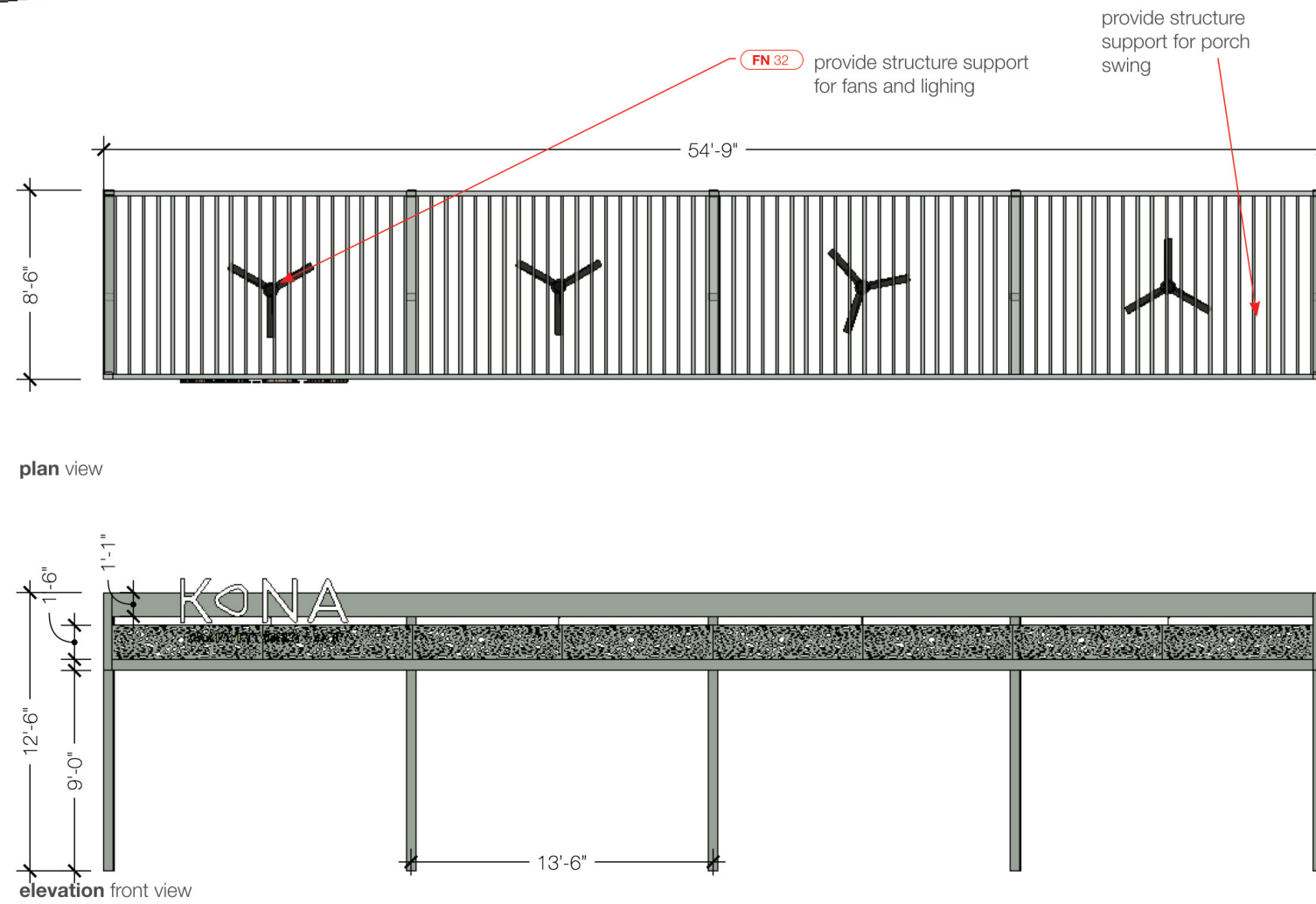
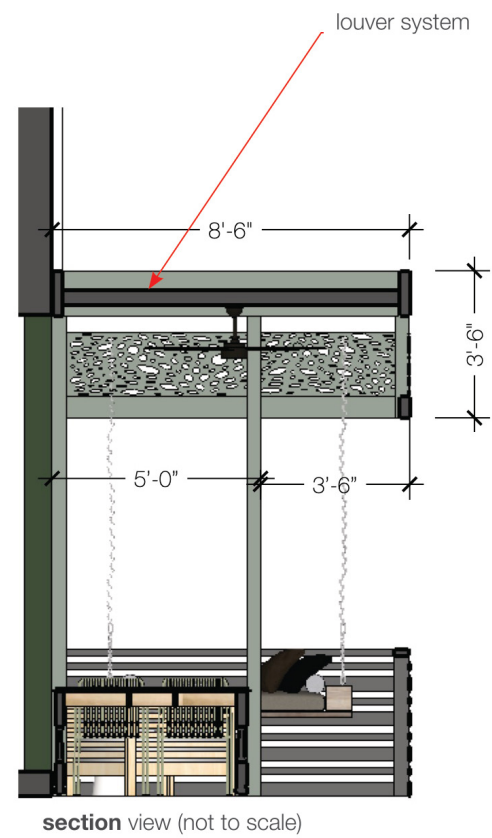
Reference Image





FX 21 Pergola
scale 1/8" = 1'-0"

NOTES
1. Refer to Architectural Set
for final dimensions



kimberly o design

3

riverside view



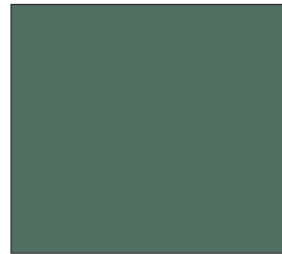
kimberly o design

1

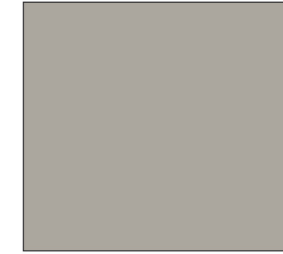
paint



PT 03 **Paint**
manufacturer Sherwin Williams
interior finish Eggshell
product SW 6193 Privilege Green 214-C5
location Interior

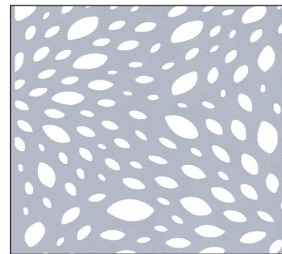


PT 04 **Paint**
manufacturer Sherwin Williams
interior finish Eggshell
product SW 6461 Isle of Pines 159-C7
location Exterior Vestibules, Interior



PT 05 **Paint**
manufacturer Sherwin Williams
interior finish Eggshell
product SW 7017 Dorian Gray 244-C3
location Interior

metal



MT 02 **Metal Panel**
manufacturer artisanpanels.com
product Nautual Patterns
pattern 124 - Dancing Leaves
size Made to Order
color to Match PT-03
location Pergola
[link](#)

furniture



FN 11 **Outdoor Dining Table**
manufacturer Article
product Teaka Dining Table for 8
finish Natural Teak
price \$1,499
location Outside Patio
[link](#)



FN 12 **Outdoor Dining Chair**
manufacturer Article
product Caya Dining Armchair
color Grasshopper Green
price \$129
location Outside Patio
[link](#)



FN 13 **Outdoor Sectional**
manufacturer CB2
product Baixa 3-Piece Wood Outdoor Sectional
price \$2,947
location Outside Patio
[link](#)



FN 14 **Outdoor Coffee Table**
manufacturer All Modern
product Victor Coffee Table
price \$640
location Outside Patio
[link](#)



FN 15 **Outdoor Club Chair**
manufacturer Williams Sonoma
product Ojai Outdoor Club Chair
color Sunbrella Canvas Natural
fabric Perennials Basketweave - White
wood finish Natural
price \$1,195
location Outside Patio



FN 16 **Patio Swing**
manufacturer Home Depot
product Cane Patio Swing Outdoor Patio Swing with Square Back Cushions
price \$749
location Outside Patio
[link](#)



FN 17 **Outdoor Side Table**
manufacturer Crate & Barrel
product Madura Woven Outdoor Side Table
price \$350
location Outside Patio
[link](#)



FN 18 **Outdoor Side Table**
manufacturer West Elm
product Cami Ceramic Side Table
color Sage
price \$159
location Outside Patio
[link](#)

furniture



FN 20 **Outdoor Planter SM**
manufacturer Planters Unlimited
product Madera Tapered Rectangle Planters
size 36 W" x 24"D x 24 H"
color Walnut
price \$1012
location Outside Patio
[link](#)



FN 32 **Ceiling Fan**
manufacturer Lumens
product TriAire Ceiling Fan
size 44" Fan Blade Span
color Black
base
price \$473
location Pergola
[link](#)



FN 35 **Umbrella**
manufacturer
product
size 6'-0" or larger square shade
color Taupe
price
location Patio
NOTE Umbrella should have a cantilever base.



FN 37 **Exterior Fireplace**
source fireplacesdirect.com
manufacturer American Fyre Designs
Contractor's Model Outdoor Gas Fireplace
SKU AFD-45-Config
size 24" x 30" x 30"H
color Paint PT 06 except for horizontal hearth.
location Patio
[link](#)

lighting



LT 13 **Outdoor Sconce**
manufacturer YLighting
product Suspense Outdoor Wall Sconce
size (Small) 8" W x 11" H x 10" D
color Black [link](#)
price \$249
location exterior

Dining Table – FN 11
Qty: 4



INFORMATION

- Manufacturer: Akula Living
- Product Name: Natural table
- Size: 29.5D x 51.2W x 29.9H
- Sell Price: \$1728.00 ea
- Warranty: 5 year