

Outstanding Visibility with High Reliability

XE Series

The XE series provides the optimal solution to satisfy the high demand for accurate information delivery and operational efficiency. With superior picture quality and excellent durability, this outdoor display delivers eye-catching content to captivate customers even under direct sunlight or extreme changes in the environment.

BURGER



HAMBURGERS	
Mega	\$4.00
Super	\$3.50
Regular	\$3.00
Combo Drinks Roll-Ups	

HOTDOGS	
Mega	\$4.00
Super	\$3.50
Regular	\$3.00
Combo Drinks Roll-Ups	

DRINKS	
Soda	\$1.50
Powerade	\$1.50
Poppi	\$2.50
CocaCola	\$1.50

COFFEES	
Espresso	\$1.00
Cappuccino	\$1.00
Mocha	\$1.00
Latte	\$1.50

LUNCH SPECIAL	
CHEESE BURGER	\$4
BIG BURGER SET	\$6

NEW	
BEUF BURGER	\$4.5
CHICKEN NUGGETS	\$2

Outstanding Visibility with High Reliability

XE Series

Outstanding Visibility

High Brightness

With a powerful brightness of 3,000 cd/m² and wide viewing angles, the XE series delivers content clearly and catches the attention of passersby no matter where they are, making it the ultimate display for outdoor visibility.



Visible with Polarized Sunglasses

QWP* enables clear visibility even when the viewer is wearing polarized sunglasses.



* Quarter Wave Plate

Outstanding Visibility with High Reliability

XE Series

Outstanding Visibility

Smart Brightness Control

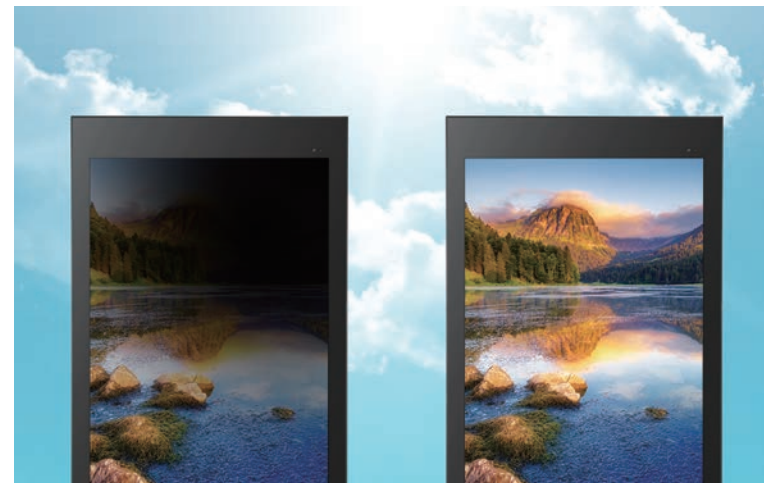
The screen brightness is automatically adjusted depending on the ambient light. The brightness is increased in light for better visibility, while it is decreased in darkness for efficient power management.



Auto Brightness

No Blackening

Even under direct sunlight exposure, the open frame XE series remain free of blackening defects under 110°C and provide superior quality for outdoor usage.



Conventional

XE series

Outstanding Visibility with High Reliability

XE Series

Outdoor Reliability

Secured Protection with IP56 Design

The XE series is sealed with IP56 design for reliable operation. It's designed to be not only waterproof but also weatherproof against the damaging effects of the sun, rain, snow, dust and wind, an essential feature for outdoor application.



Conformal Coating

The product can be often unavoidably exposed to dust and water during maintenance. Conformal coating on every major circuit board eliminates such circumstances by protecting it against dust, iron powder, humidity, etc.



Outstanding Visibility with High Reliability

XE Series

Outdoor Reliability

Electrical Safety

Circuit breaker and surge suppressor are integrated inside ensuring absolute protection from overcurrent short circuits, and unwanted voltages. This type of integration establishes preventative solutions for signage's from having future damages.



* Additional accessory is needed for 49"

Protective Glass

Tempered and laminated front glass ensures optimum protection, from outdoor extremities allowing minimal to no damage from external impacts.



Conventional

XE series

Outstanding Visibility with High Reliability

XE Series

Outdoor Reliability

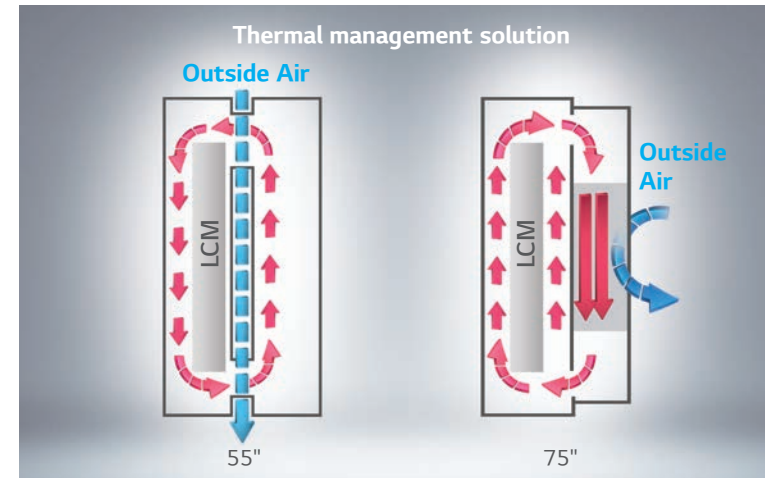
Wide Range of Operating Temperature

The panel offers superb reliability under a wide range of operating temperatures, so the XE series requires fewer constraints for outdoor installation.



Enhanced Thermal Management

The patent thermal management technology efficiently cools down the heat generated from every part of the product, preventing outside air from entering.



* Exclusive on 75"/55"

Outstanding Visibility with High Reliability

XE Series

Easy Management

Replaceable Front Glass

The outdoor display is exposed and is a high risk for vandalism. The protective glass of 49XEB3E can be detached from its main body which allows for an instant replacement on site.



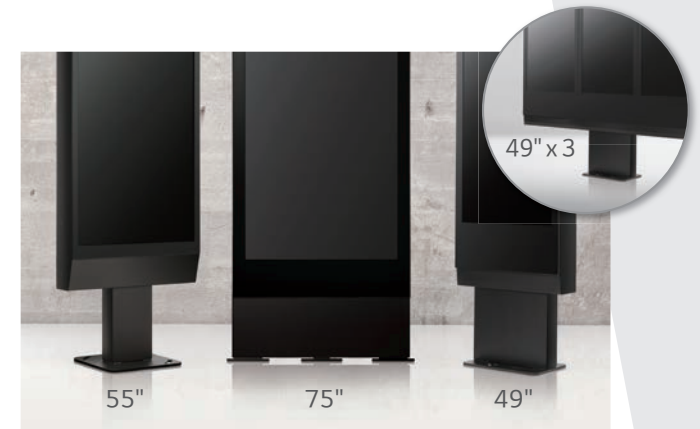
Web Monitoring

The LG Control Manger, the embedded web monitoring program, allows a variety of parameters to be diagnosed in real time such as temperature, pixel, door, ambient light, filter*, and gyro sensors. It can be easily controlled at all times.



Optional Configuration

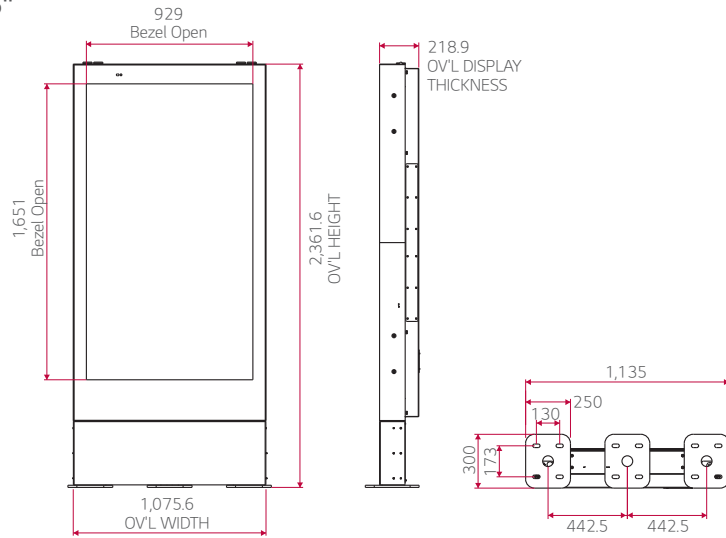
Optional stand accessories are provided to allow panel to stand freely on the ground and facilitate easy cable management. As for 49XEB3E, the exclusive stand for 1x3 configuration is also available to meet various business requirements.



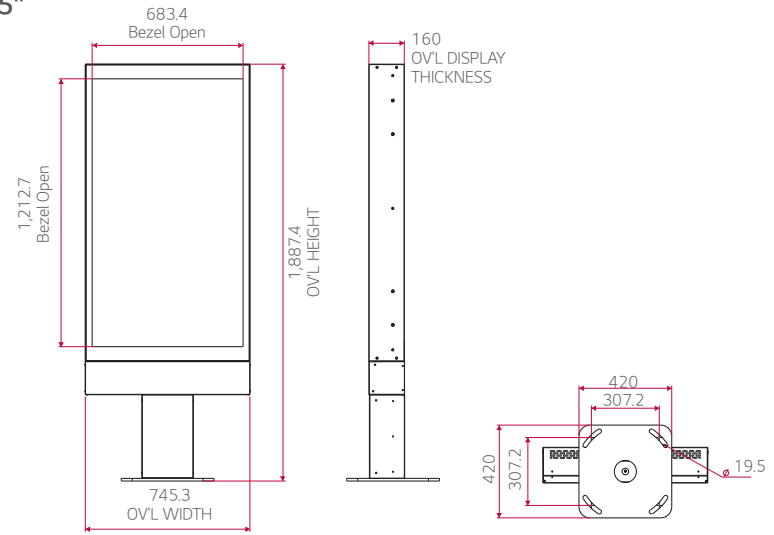
* Exclusive on 49"

Dimension

75"

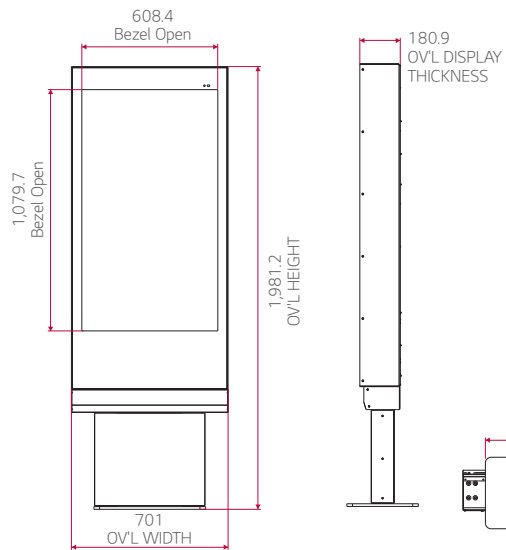


55"

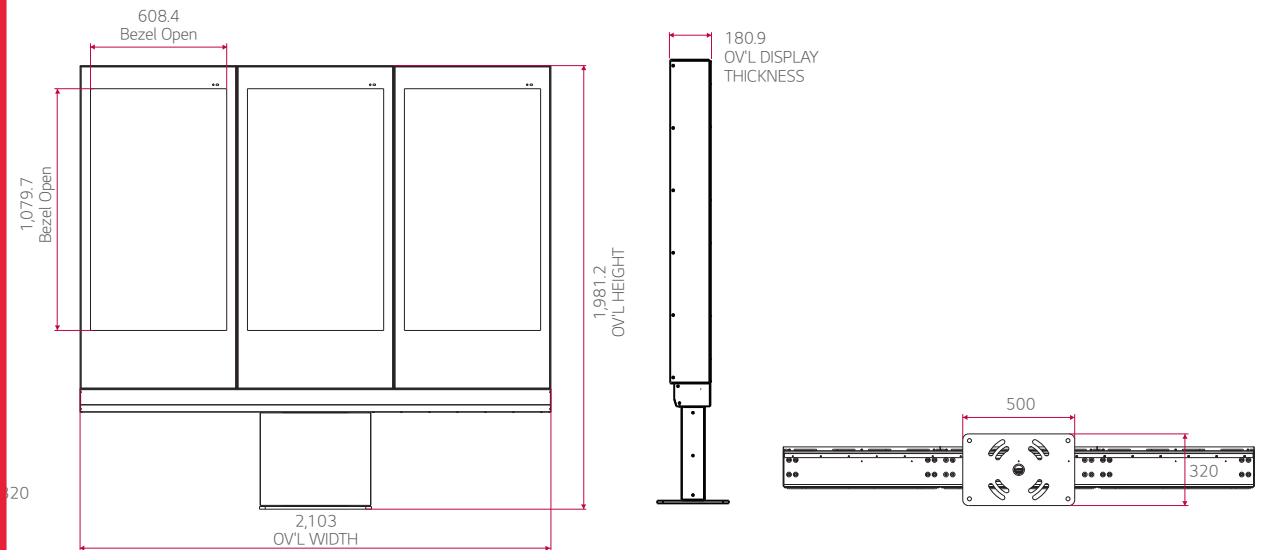


49"

(1 x 1)



(1 x 3)



Specifications

	75XE3C	55XE3C	49XE3E	
PANEL	Screen Size	75"	55"	49"
	Panel Technology	IPS	IPS	IPS
	Aspect Ratio	16 : 9	16 : 9	16 : 9
	Native Resolution	3,840 x 2,160 (UHD), M+ (WRGB)	1,920 x 1,080 (FHD), M+ (WRGB)	1,920 x 1,080 (FHD), M+ (WRGB)
	Brightness*	3,000 cd/m ² (Typ.), 2,400 cd/m ² (min)	3,000 cd/m ² (Typ.), 2,400 cd/m ² (Min.)	3,000 cd/m ² (Typ.), 2,400 cd/m ² (Min.)
	Viewing Angle (H x V)	178 x 178	178 x 178	178 x 178
	Response Time	8 ms (G to G BW, Typ.)	9 ms (G to G BW, Typ.)	8 ms (G to G BW, Typ.)
	Surface Treatment	Hard Coating(2H), Anti-glare Treatment of the Front Polarizer (Haze 3% (Typ.)), QWP	Hard Coating (2H), Anti-reflection Treatment of the Front Polarizer (Haze 3% (Typ.)), QWP	Hard Coating (2H), Anti-reflection Treatment of the Front Polarizer (Haze 3% (Typ.)), QWP
	QWP Polarizer	Yes	Yes	Yes
	Life Time	50,000 Hrs	50,000 Hrs	50,000 Hrs
Operation Hours	24Hrs	24Hrs	24Hrs	
Orientation	Portrait only	Landscape & Portrait	Portrait Only	
CONNECTIVITY	Input	HDMI, DP, DVI-D, Audio In, USB 3.0, SD Card	HDMI, DP, DVI-D, Audio In, USB 3.0	HDMI, DP, DVI-D, Audio In, USB 3.0
	Output	DP, External Speaker Out	DP, External Speaker Out	DP, External Speaker Out
	External Control	RS232C In/out, RJ45 In	RS232C In/out, RJ45 In	RS232C In/out, RJ45 In
PHYSICAL SPECIFICATION	Front glass	9.5 mm (AR, Tempered & Laminated Glass)	7.5 mm (AR, Tempered & Laminated Glass)	6.8 mm (AR, Tempered & Laminated Glass)
	Bezel Color	Black	Black	Black
	Bezel Width	110 mm (T), 230 mm (B), 73.3 mm (L/R)	66.4 mm (T/B), 31.0 mm (L/R)	103.0 mm (T), 262.0 mm (B), 46.5 mm (L/R)
	Monitor Dimension (W x H x D)	1,075.6 x 1,991.6 x 218.9 mm	745.3 x 1,345.4 x 160.0 mm	701 x 1,445 x 180.9 mm
	Weight (Head)	180 kg	70 kg	58.2 kg
	Monitor with Optional Stand Dimensions (W x H x D)	1,075.6 x 2,361.6 x 218.9 mm	745.3 x 1,877 x 420 mm	745 x 1,980x 320 mm (TBD)
	Weight (Head+Stand)	247 kg	103.5 kg	95kg (TBD)
	Packing Dimensions (W x H x D)	1,292 x 2,296 x 468 mm	1,027 x 1,491 x 309 mm	863 x 1,624 x 333 mm
	Packed Weight	210 kg	100.5 kg	71.8 kg
	SPECIAL FEATURES	Temperature Sensor, Auto Brightness Sensor, Pixel Sensor, Cooling FAN, ISM Method, DPM Select, Energy Saving, Smart Internal Memory 8GB (System 4GB + Available 4GB), USB Cloning, Easy Brightness Control, Wake on LAN, Fail Over,		Energy Saving, File Play with USB, DP Daisy Chain, Control Manager
ENVIRONMENT CONDITIONS	Operation Temperature	-30°C to 50°C	-30°C to 50°C	-30°C to 50°C
	Operation Humidity	5% to 100%	5% to 100%	5% to 100%
	Dust / Water Proofing	IP56	IP56	IP56
POWER	Power Supply	100-240V~, 50/60Hz	100-240V~, 50/60Hz	100-240V~, 50/60Hz
	Power Type	Built-In Power	Built-In Power	Built-In Power
	Power Consumption Typ./Max	700 W / 1,000 W	350 W / 500 W	290 W / 440 W
	Smart Energy Saving	350 W	178 W	145 W
STANDARD (CERTIFICATION)	Safety	UL / cUL / CB	UL / cUL / CB	UL / cUL / CB
	EMC	FCC Class "A" / CE / KCC	FCC Class "A" / CE / KCC	FCC Class "A" / CE / KCC
SOFTWARE COMPATIBILITY	Content Management Software	SuperSign CMS	SuperSign CMS	SuperSign CMS
ACCESSORIES	Control and Monitoring Software	SuperSign C	SuperSign C	SuperSign Link
Basic	Remote Controller, Manual (EIG, ESG), Regulation Book, Phone to RS232C Gender, USB Cable, HDMI Cable	Remote Controller, Manual (EIG, ESG), Regulation Book, Phone to RS232C Gender, USB Cable, HDMI Cable	Remote Controller, Manual (EIG, ESG), Regulation Book, Phone to RS232C Gender, USB Cable, HDMI Cable	Remote Controller, Manual (EIG, ESG), Regulation Book, Phone to RS232C Gender, USB Cable, HDMI Cable
	Optional	Enclosure Stand (ST-750X)	Enclosure Stand (ST-550X)	Enclosure Stand (ST-491X, ST-493X), Circuit Breaker & Surge Suppressor (KT-PS)

* With Front Protective Glass

Download LG Commercial Display Mobile App



Apple App Store



Google Play Store

www.lg.com/b2b

[youtube.com/c/LGCommercialDisplay](https://www.youtube.com/c/LGCommercialDisplay)

<https://www.facebook.com/LGInformationDisplay/>

<https://www.linkedin.com/company-beta/16235211/>

LG may make changes to specifications and product descriptions without notice.

Copyright © 2018 LG Electronics Inc. All rights reserved. "LG Life's Good" is a registered trademark of LG Corp.

The names of products and brands mentioned here may be the trademarks of their respective owners.



Burger King

1 X 3 Digital Drive Thru Menu Board

Installation Instructions

NOTE: BEFORE BEGINNING THIS INSTALLATION, THERE MUST BE A 20 AMP DEDICATED CIRCUIT INSTALLED FOR THE DIGITAL DRIVE THRU.



Drawing Type Installation

Customer Burger King

Project Description 1 X 3 Digital Drive Thru

Drawn By:

Proj. Man.:

Date: 03/28/19

Page: 1

Note: PN: 701168



I:\NSTRNSH\BKing\BKFitch\Rollout\1 X 3 Digital Drive Thru\1 X 3 Digital Drive Thru 03.28.19

Parts

A - (1) Mounting Steel w/ Switch

B - (1) Set of 4 Anchor Bolts w/ Template

C - (1) LCD Display Housing Assembly

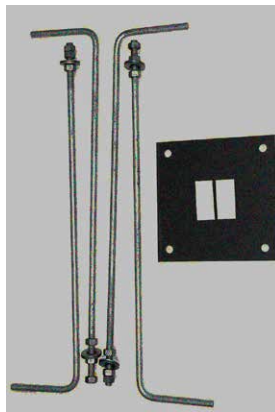
D - (1) T25 Torx Security Bit

E - (6) Small Zip Ties

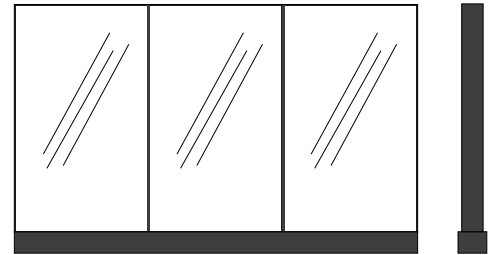
F - (6) Zip Ties and Pads



A



B



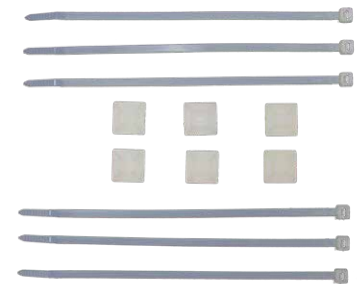
C



D



E



F

Drawing Type Installation

Customer Burger King

Project Description 1 X 3 Digital Drive Thru

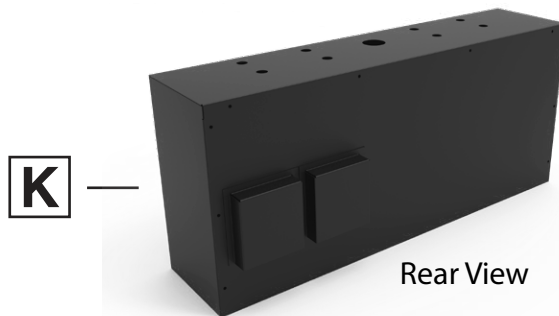
Drawn By:
 Proj. Man.:
 Date: 03/28/19
 Page: 2

Note: PN: 701168



Parts

- G** - (8) 5/8" X 2" Bolts
- H** - (8) 5/8" Lock Washers
- I** - (16) 5/8" Flat Washers
- J** - (8) 5/8" Nuts
- K** - Shroud Assembly



Drawing Type Installation
 Customer Burger King
 Project Description 1 X 3 Digital Drive Thru

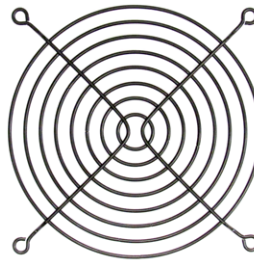
Drawn By:
 Proj. Man.:
 Date: 03/28/19
 Page: 3

Note: PN: 701168



Parts

- M** - Fan (1)
- N** - Black Finger Grill (1)
- O** - Thermal Controller (1)
- P** - 12 Volt Adapter
- Q** - Power Strip (3)

**M****N****O****P****Q**Drawing Type InstallationCustomer Burger KingProject Description 1 X 3 Digital Drive Thru

Drawn By:

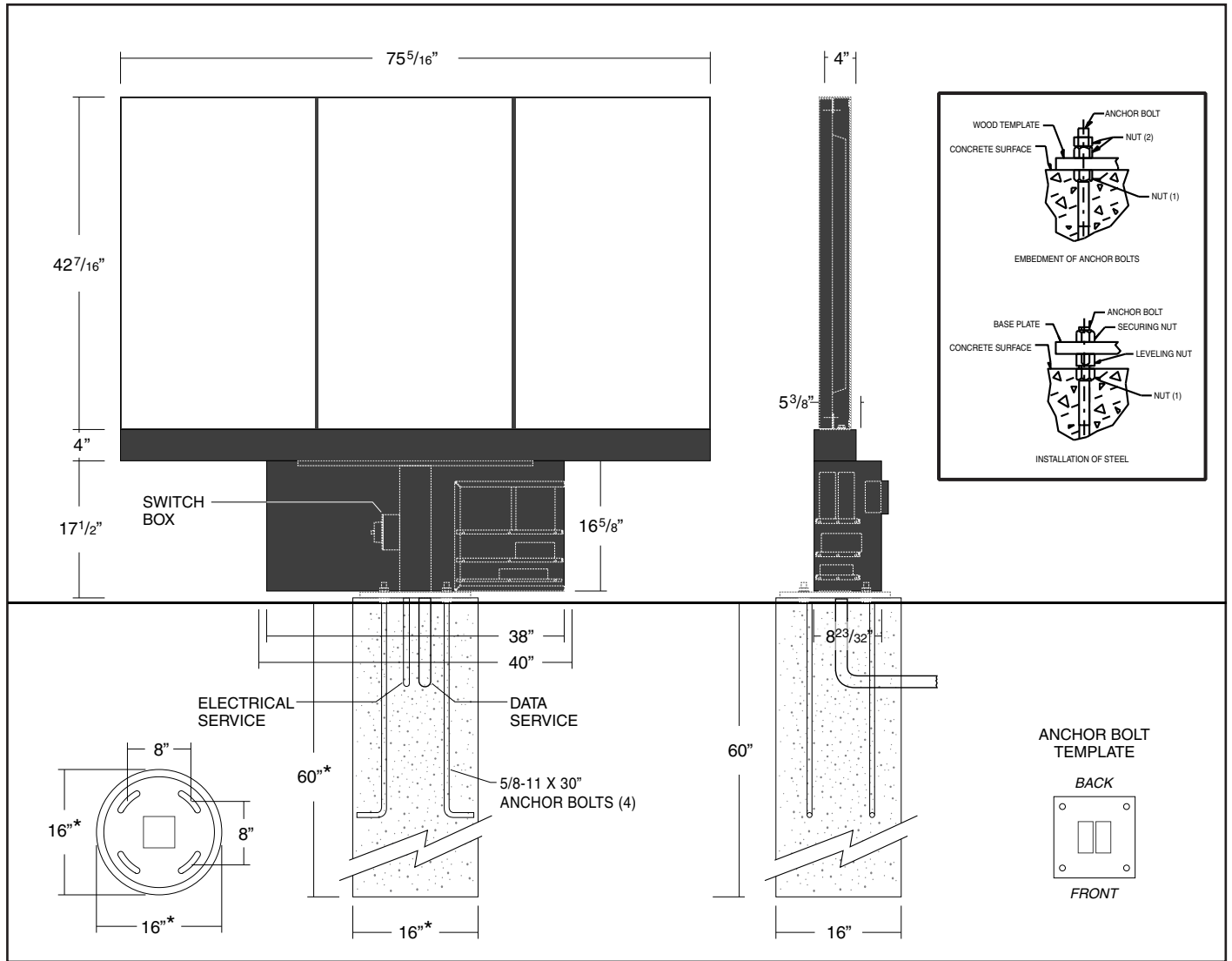
Proj. Man.:

Date: 03/28/19

Page: 4

Note: PN: 701168





***NOTE: These are approximate foundation measurements. The soil bearing capacity at the erection site must be considered when designing the foundation. The sign manufacturer is not able to predetermine the specific needs of each location. Consult a local engineer for design specifications.**

***NOTE: This is a suggested plan. Local requirements may exceed this design. The contractor is responsible to verify this plan.**

- ① Dig hole to the minimum length, width and depth as depicted above. Use template provided (aligned as shown above) and place the anchor bolts in the hole. Brace to prevent movement. Position electrical and data conduit as shown. Fill hole with concrete.
- ② When concrete is dried remove the template from the concrete base. Clean anchor bolt threads and run one nut and washer onto each bolt which will be used to level the structure. Remove the switch cover and electrical box from the side of the mounting steel and set them aside. Remove the cover plate from the right side of the mounting steel and set it aside.

Drawing Type Installation
 Customer Burger King
 Project Description 1 X 3 Digital Drive Thru

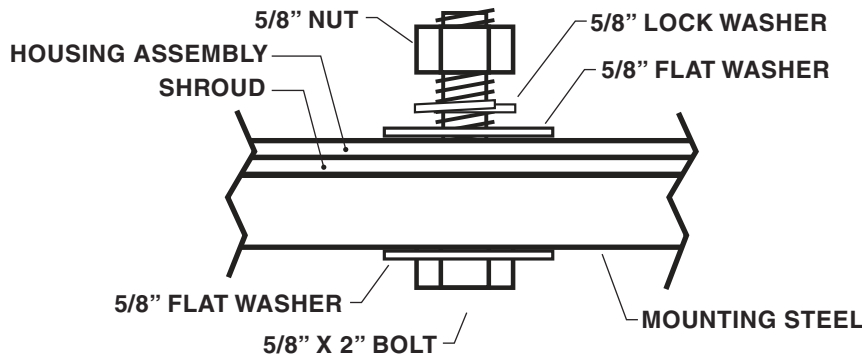
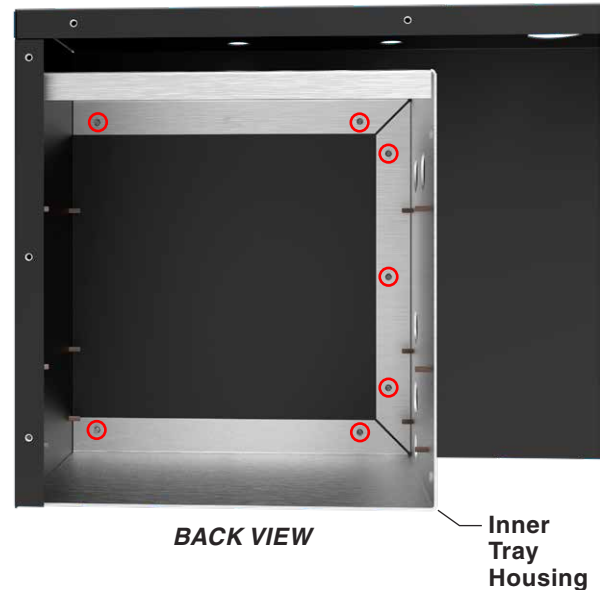
Drawn By:
 Proj. Man.:
 Date: 03/28/19
 Page: 5

Note: PN: 701168



I:\NSTRNSH\BKing\BKFitch\Rollout\1 X 3 Digital Drive Thru\1 X 3 Digital Drive Thru 03.28.19

- ③ Lower the mounting steel onto the anchor bolts making sure the switch box access hole is facing as shown in the picture on the previous page. Also make sure the electrical and data conduits are separated in their specific sides of the divided tube as shown in the picture on the previous page. Run one nut and washer onto each anchor bolt to secure. Do not tighten. With the aid of available leveling device, adjust leveling nuts so structure is level and plumb. Tighten the securing nuts.
- ④ **IMPORTANT: Prior to tightening the securing nuts, orient the mounting steel to the proper viewing angle for the fully installed menu board. Once the shroud is installed it will be difficult to access the front securing nuts.**
- ⑤ Unpack the shroud. Remove the (10) 10-24 X 1/2" Torx screws that hold the shroud back in place and set them aside. Detach the inner tray housing by removing the (7) 10-24 KEPS nuts that hold it in place and set them aside. Remove the angle from the right side of the tray housing. Do not discard the (2) 10-24 X 1/2 screws.
- ⑥ Set the shroud over the mounting steel.
- ⑦ Unpack the LCD housing assembly and remove the 10-24 X 1/2" Torx screws that hold the (3) backs in place using the provided T25 Torx bit. Set the backs and their screws aside. **NOTE: Remember the orientation of the backs. Failure to do so will block the fans in the LCD screens.** Remove the (4) cover plates from the back, bottom of the assembly and set them and their screws aside.
- ⑧ Set the LCD housing assembly on top of the shroud. Secure the assembly to the mounting steel with the provided 5/8" X 2" bolts, lock washers, flat washers and nuts. **See below diagram for bolt orientation, up from the bottom, washer and nut on top.**



Drawing Type Installation

Customer Burger King

Project Description 1 X 3 Digital Drive Thru

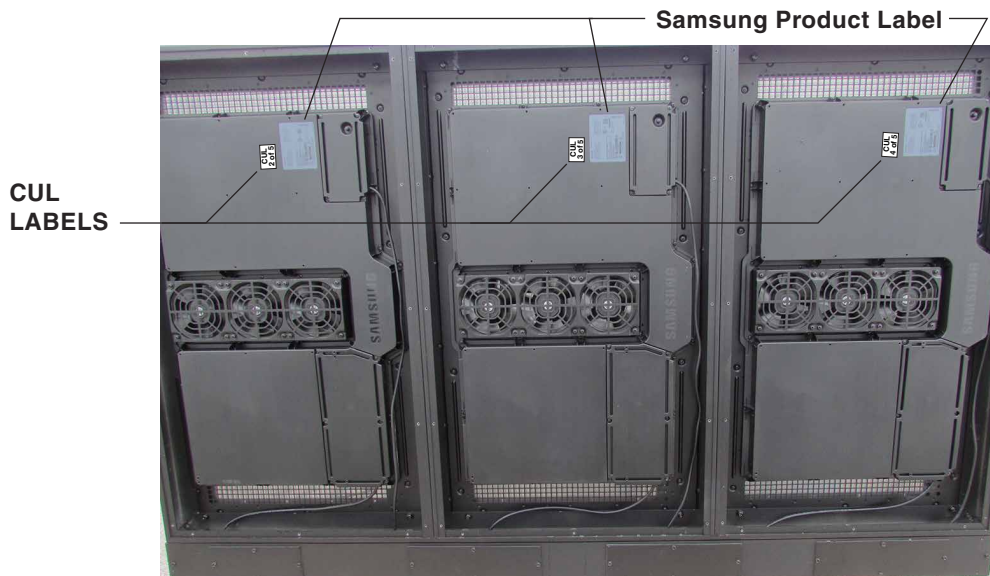
Drawn By:
Proj. Man.:
Date: 03/28/19
Page: 6

Note: PN: 701168



I:\NSTRNSH\BKing\BKFitch\Rollout\1 X 3 Digital Drive Thru\1 X 3 Digital Drive Thru\03.28.19

- 9) Unpack the (3) LCD screens. Set the power cord and remote from each screen aside. Remove the film off of each LCD screen. Remove the (4) mounting screws from each screen and set them aside.
- 10) Using at least 2 people, place the LCD screens into the housing assembly from the front. Make sure that the Samsung product label is to the top. With one person holding the screen from the front, secure each screen in place **from the back** of the assembly with the previously removed mounting screws.



NOTE: Make sure screens have the CUL labels marked "2 of 5", "3 of 5" and "4 of 5".

- 11) Remove the upper and lower back covers from each LCD screen and set them and their screws aside.



Drawing Type Installation

Customer Burger King

Project Description 1 X 3 Digital Drive Thru

Drawn By:
Proj. Man.:
Date: 03/28/19
Page: 7

Note: PN: 701168



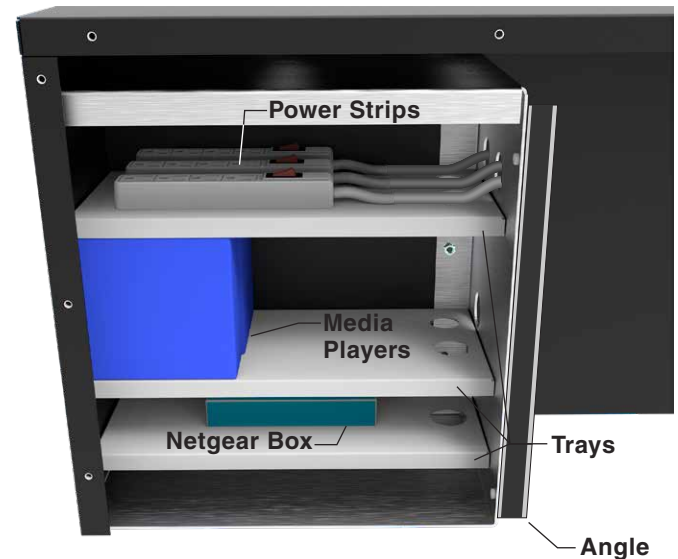
LSI\INSTNSH\BKing\BK\Fitch\Rollout\1 X 3 Digital Drive Thru\1 X 3 Digital Drive Thru 03.28.19

- 12 Plug one end of the LCD display power cord into the upper outlet of each display. Run the cord straight down through the larger 1-3/8" holes into the 4" x 5" tube, down into the mounting steel and out of the 2" hole in the right side of the mounting steel.
- 13 Use the provided smaller zip ties to tie up the excess lengths of power cable in the top cabinet.
- 14 Run all HDMI and CAT5 data cable provided by others from the lower portion of the LCD display, through the 4" x 5" tube and into the mounting steel and out of the hole in the left side of the mounting steel.
- 15 Using the provided larger zip ties and bases, organize the power cords, HDMI, and CAT5 cables in the 4" x 5" tube **making sure cables are a minimum of 1/2" off the bottom of the tube.**

- 16 Replace both the upper and lower covers on all (3) LCD displays.

- 17 Replace the inner tray housing and secure in place with the previously removed (7) 10-24 KEPS nuts.

- 18 Lay in the (3) trays into the inner tray housing making sure the large holes in the trays are towards the mounting steel. Replace the angle previously removed from the right side of the tray housing by re-inserting the (2) 10-24 X 1/2" screws.



- 19 Take the (3) supplied power strips and cut off the plug. Strip back 6" of the outer sheathing from the end of the cord.

- 20 Place the (3) power strips into the inner tray housing on the top tray. Place the (3) media players (by others) on the middle tray. Place the Netgear box on the bottom tray.

Drawing Type Installation

Customer Burger King

Project Description 1 X 3 Digital Drive Thru

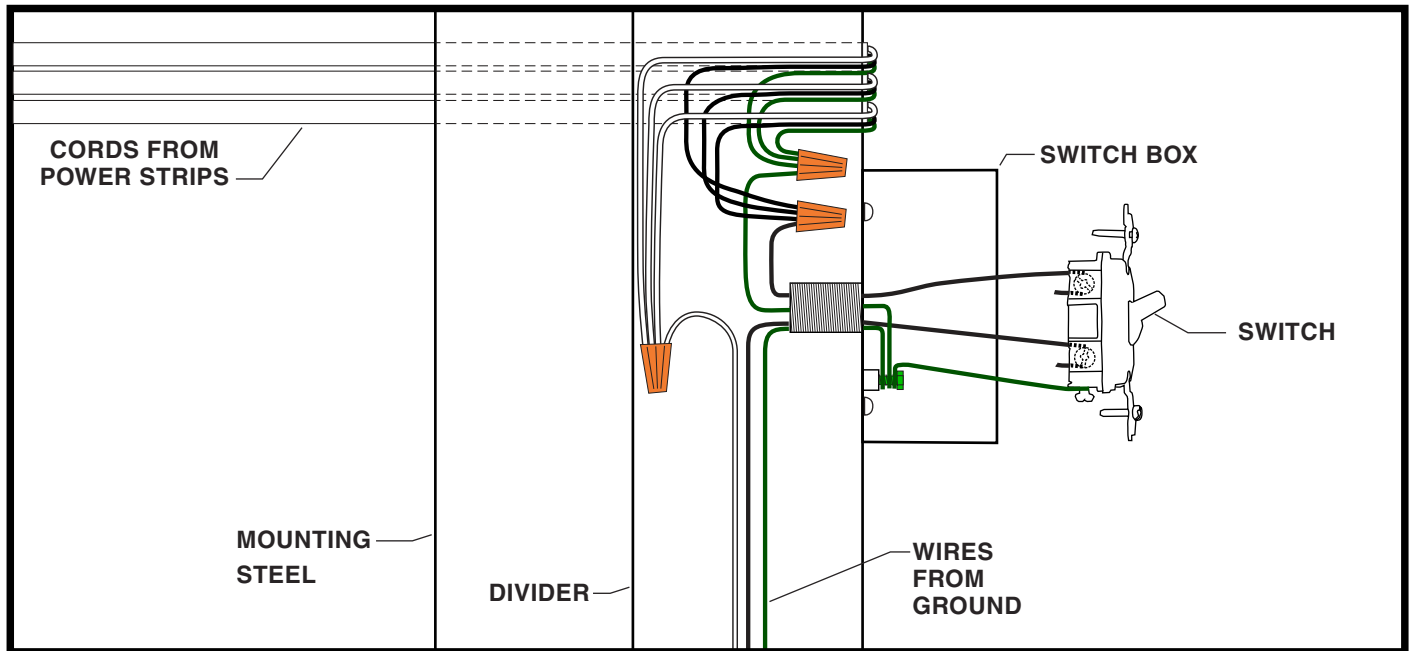
Drawn By:
Proj. Man.:
Date: 03/28/19
Page: 8

Note: PN: 701168

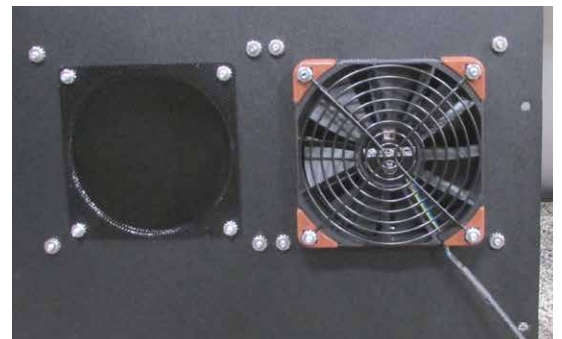
LSI\INSTNSH\BKKing\BK\Fitch\Rollout\1 X 3 Digital Drive Thru\1 X 3 Digital Drive Thru 03.28.19



- 21 Wire the assembly per the diagram below. **NOTE: When making electrical connections, comply with all applicable national, state and local codes.**



- 22 Re-attach the switch box, switch and switch cover onto the mounting steel. Make sure the switch is in the ON position.
- 23 Connect all HDMI and CAT5 cables by others as instructed by others.
- 24 Plug the power cords from the LCD displays into the power strips. **NOTE: 1 power cord per power strip.**
- 25 Remove the (4) nuts off of the 1-1/2" studs on the shroud back. Attach the fan (**label towards the inside of the shroud**) and the fan finger grill using the (4) nuts just removed.



Drawing Type Installation
 Customer Burger King
 Project Description 1 X 3 Digital Drive Thru

Drawn By:
 Proj. Man.:
 Date: 03/28/19
 Page: 9

Note: PN: 701168



I:\NSTRNSH+BKing\BKFitch\Rollout\1 X 3 Digital Drive Thru\1 X 3 Digital Drive Thru 03.28.19

- 26 Plug the fan into the thermal controller. Plug the 12 volt adapter into the thermal controller. Remove the clear plastic cover from the end of the thermal controller sensor. **Make sure the switch is set to TC.** Place the thermal controller on the middle tray and plug it into one of the power strips.



- 27 Replace the shroud back by re-inserting the (10) 10-24 X 1/2" Torx screws previously removed.

- 28 Re-attach the (4) rectangular cover plates on the 4" x 5" tube with the screws previously removed.

- 29 Secure the (3) backs in place with the 10-24 X 1/2" screws previously removed using the provided T25 torx bit and driver. **NOTE: Make sure the backs are oriented as shown at right.**
NOTE: Middle back is wider than the right and left backs.



Drawing Type Installation

Customer Burger King

Project Description 1 X 3 Digital Drive Thru

Drawn By:

Proj. Man.:

Date: 03/28/19

Page: 10

Note: PN: 701168



EVNSTRNSH-BKKing/BKFitCh/Rollout/1 X 3 Digital Drive Thru/1 X 3 Digital Drive Thru 03.28.19