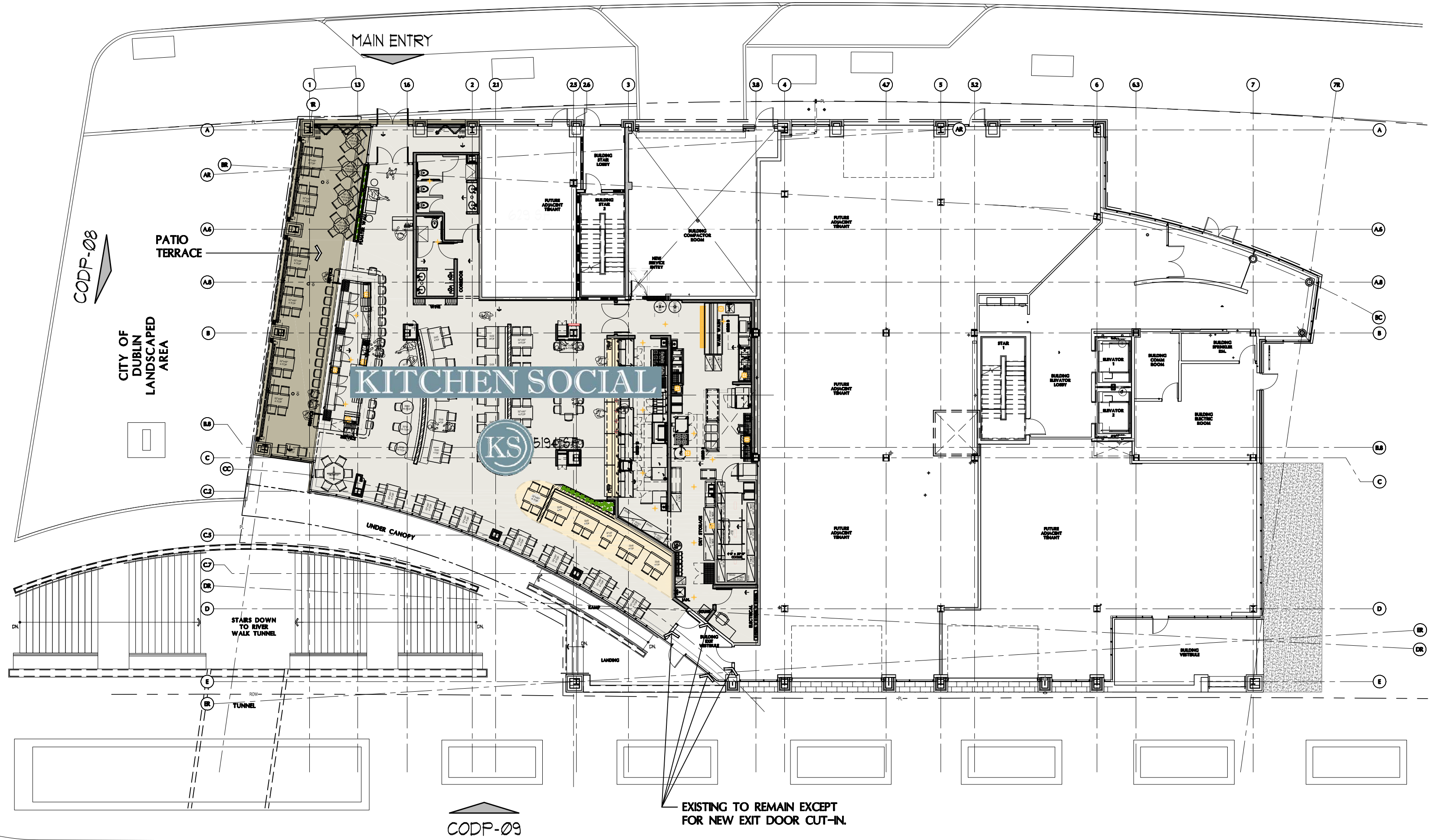


JOHN SHIELDS PARKWAY

CODP-01

LONGSHORE STREET



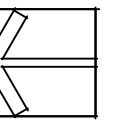
CODP-09

RIVERSIDE DRIVE

# 1. - SITE PLAN

KITCHEN SOCIAL @ BRIDGE PARK - BUILDING D-2

SCALE: 1/16" = 1'-0"



NORTH



Kitchen Social

## KITCHEN SOCIAL

SCALE: 1/16" = 1'-0"

## SITE PLAN

03 / 19 / 2021



NORTH

ALAN R. BURGE  
**ABA**  
ARCHITECTURE

43 E. MARKET ST. SUITE 200 | AKRON, OHIO 44308  
VOICE: 330.475.1522 | WWW.BURGE-ARCHITECTURE.COM

CODP-01

20-18

© 2021 ABA



LONG SHORE STREET

1 CODP-01 1.3 MAIN ENTRY 1.6 2 2.1



CODP-08

CODP-09



KITCHEN SOCIAL

PROPOSED PATIO TERRACE PLAN



ALAN R. BURGE  
ARCHITECTURE

43 E. MARKET ST. SUITE 200 | AKRON, OHIO 44308  
VOICE: 330.475.1522 | WWW.BURGE-ARCHITECTURE.COM

CODP-02

Kitchen Social

SCALE: 1/4"=1'-0"

03 / 25 / 2021

20-18  
© 2021 ABA





Kitchen Social - Bridge Park 6767 Longshore Street Suite 110 Dublin, OH 43017  
03/08/2021

ALAN R. BURGE  
ARCHITECTURE

43 EAST MARKET STREET #200 | AKRON, OHIO 44308  
VOICE: 330.475.1522 | FAX: 330.368.4291 | WWW.BURGE-ARCHITECTURE.COM





SECONDARY MATERIAL -  
FIBER CEMENT BOARD

10' TALL OVERHEAD  
INSULATED GLASS GARAGE  
DOORS



Kitchen Social - Bridge Park 6767 Longshore Street Suite 110 Dublin, OH 43017  
03/08/2021

ALAN R. BURGE  
ARCHITECTURE

43 EAST MARKET STREET #200 | AKRON, OHIO 44308  
VOICE: 330.475.1522 | FAX: 330.368.4291 | WWW.BURGE-ARCHITECTURE.COM





Kitchen Social - Bridge Park 6767 Longshore Street Suite 110 Dublin, OH 43017  
03/08/2021

ALAN R. BURGE  
ARCHITECTURE

43 EAST MARKET STREET #200 | AKRON, OHIO 44308  
VOICE: 330.475.1522 | FAX: 330.368.4291 | WWW.BURGE-ARCHITECTURE.COM





Kitchen Social - Bridge Park 6767 Longshore Street Suite 110 Dublin, OH 43017  
03/08/2021

ALAN R. BURGE  
ARCHITECTURE

43 EAST MARKET STREET #200 | AKRON, OHIO 44308  
VOICE: 330.475.1522 | FAX: 330.368.4291 | WWW.BURGE-ARCHITECTURE.COM





**20-18 KITCHEN SOCIAL - OVERALL PRIMARY / SECONDARY D-2 EAST FAÇADE MATERIALS % CALCULATION 2021-03-31**

FAÇADE	MATERIAL	PRIMARY/SECONDARY	AREA (s.f.)	%	ACTUAL	REQUIRED	MET?	REMARKS
EAST	TOTAL AREA OF FAÇADE		16,588 s.f.	100%				
	MINUS FAÇADE DOOR AREAS		420 s.f.					
	EQUALS NET AREA		16,168 s.f.					
	MINUS MEASURED SECONDARY MATERIALS		4,392 s.f.					
	EQUALS PRIMARY MATERIALS		11,776 s.f.					
	PRIMARY MATERIALS		11,776 s.f.					
	DIVIDED BY NET AREA		16,168 s.f.					
	EQUALS % OF PRIMARY MATERIALS			73%				
	SECONDARY MATERIALS		4,392 s.f.					
	DIVIDED BY NET AREA		16,168 s.f.					
EQUALS % OF SECONDARY MATERIALS			27%					
	BRICK							NOTE 1
	STOREFRONT & GLASS	PRIMARY	11,76 s.f.	73%	73%	>70%	YES	Matches existing storefront in SW 7075 Color Nanawall or approved equal.
	FOLDING DOORS & GLASS							
	LOUVERS							Matches Existing Airolite Siteproof Louver
	PORCELAIN TILE	SECONDARY	4,392 s.f.	27%	27%	< 30%	YES	Mos Metalica Pol Ret Porcelain Wall Tile - 24 in.
	ARCHITECTURAL METAL							

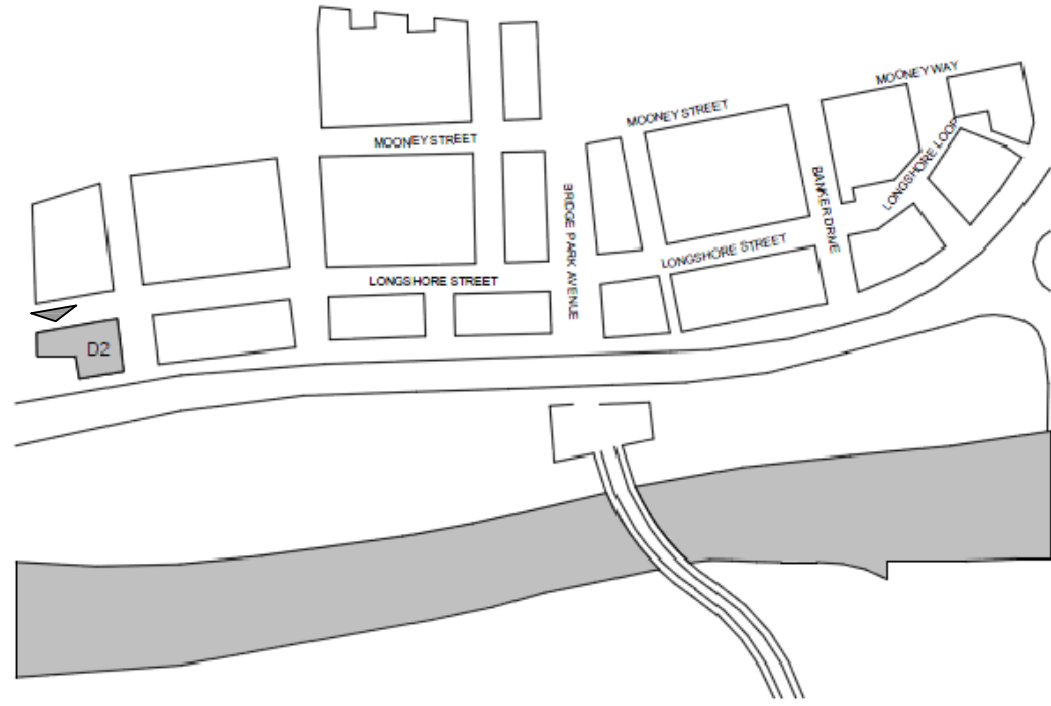
**REMARKS KEY:**

NOTE 1: EXISTING BRICK MASONRY PIERS TO REMAIN IN PLACE WITH NO CHANGE.  
 NOTE 2: EXISTING GLAZED O.H. DOORS

**20-18 KITCHEN SOCIAL - E, N & W FAÇADE TRANSPARENCY - D-2 2021-03-31**

ELEVATION	GROUND STORY AREA (s.f.)	TRANSPARENCY Y (s.f.)	REQUIRED %	PROVIDED %	MET ?	REMARKS
EAST	3,139 s.f.	1,462 s.f.	60%	47%		AT 16'-0" HIGH FAÇADE NONE OF THE EXISTING ELEVATIONS MEET THE 60% TRANSPARENCY
NORTH	1,392 s.f.	555 s.f.	60%	40%	T.B.D.	
WEST	3,790 s.f.	1,885 s.f.	60%	50%		

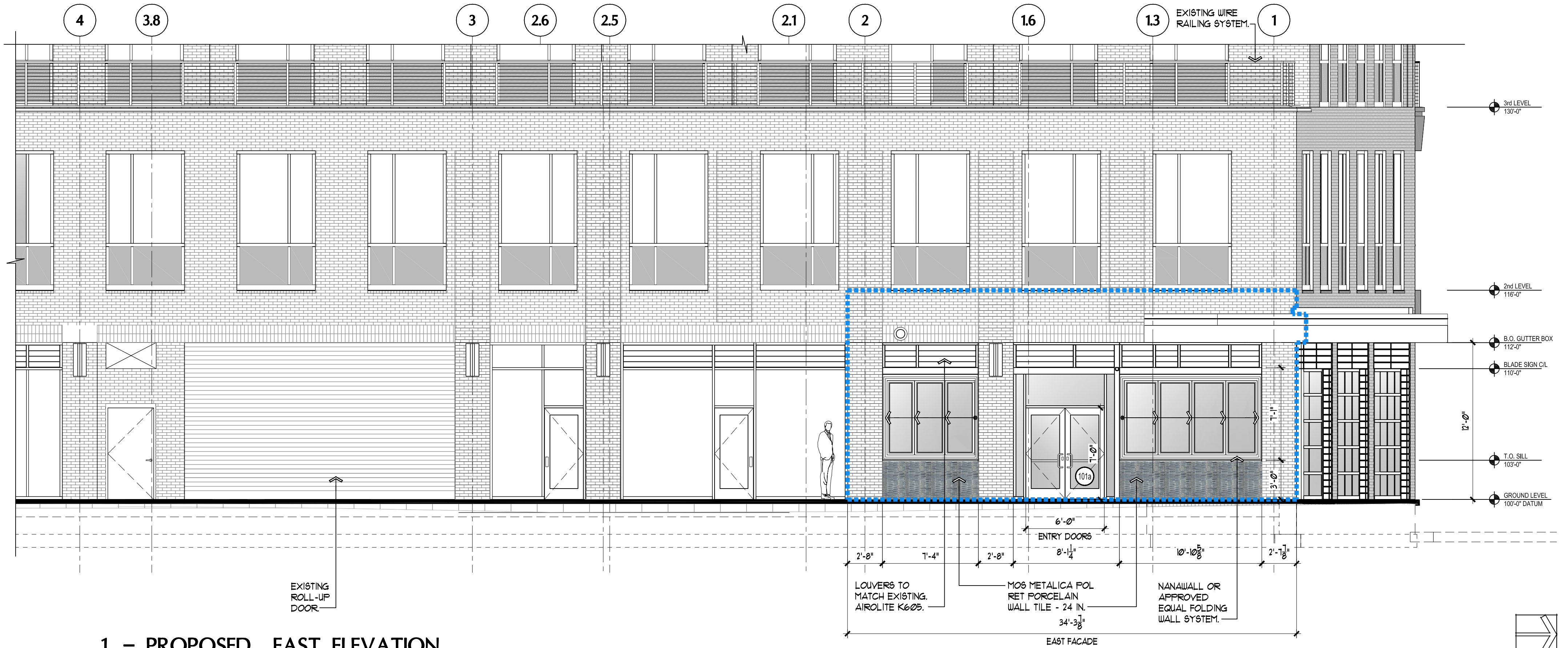




20-18 KITCHEN SOCIAL - FAÇADE MATERIALS - CORRIDOR BUILDING D-2 - 16' GROUND STORY WITHIN LEASE OUTLINE								2021-03-31
ELEVATION	MATERIAL	PRIMARY/SECONDARY	AREA (s.f.)	%	ACTUAL	REQUIRED	MET?	REMARKS
EAST	TOTAL AREA -KITCHEN SOCIAL FAÇADE ONLY		551 s.f.	100%				
	<b>MATERIAL</b>							
	1	BRICK / STONE	208 s.f.	38%				NOTE 1
	2	STOREFRONT & GLASS	83 s.f.	15%	75%	70%	YES	
	3	FOLDING DOORS & GLASS	119 s.f.	22%				Nanawall or approved equal.
	4	PORCELAIN TILE & COUNTER	55 s.f.	10%				Mos Metalica Pol Ret Porcelain Wall Tile - 24 in.
	5	LOUVERS	50 s.f.	9%	25%	< 30 %	YES	Match Existing Airolite sight proof louver in SW 7075 gray
6	STEEL	13 s.f.	2%					
7	ARCHITECTURAL METAL	27 s.f.	5%				NOTE 2	
NORTH	TOTAL AREA -KITCHEN SOCIAL FAÇADE ONLY		1,271 s.f.	100%				
	<b>MATERIAL</b>							
	1	BRICK / STONE	363 s.f.	29%				NOTE 1
	2	STOREFRONT & GLASS	65 s.f.	5%	72%	80%	T.B.D.	
	3	O.H. DOOR - FULLY GLAZED	490 s.f.	38%				C.H.I. 3297 FULL-VIEW ALUM. INSULATED POWDER COAT - RAL 7012 GRAY
	4	FIBER CEMENT SIDING	108 s.f.	8%				
	5	STEEL	48 s.f.	4%	28%	< 20 %	T.B.D.	
6	ARCHITECTURAL METAL	197 s.f.	16%				NOTE 2	
WEST	TOTAL AREA -KITCHEN SOCIAL FAÇADE ONLY		1,466 s.f.	100%				
	<b>MATERIAL</b>							
	1	BRICK / STONE	354 s.f.	24%				NOTE 1
	2	STOREFRONT & GLASS	816 s.f.	56%	80%	50%	YES	
	3							
	4	LOUVERS	49 s.f.	3%				Match Existing Airolite sight proof louver in SW 7075 gray
	5	ARCHITECTURAL METAL	246 s.f.	17%	20%	< 50 %	YES	NOTE 2
6								

REMARKS KEY:  
 NOTE 1 : EXISTING BRICK MASONRY PIERS & STONE SILLS TO REMAIN IN PLACE WITH NO CHANGE.  
 NOTE 2 : EXISTING ARCHITECTURAL METAL PANELS TO REMAIN IN PLACE WITH NO CHANGE.

EXISTING BRICK



1. - PROPOSED EAST ELEVATION

KITCHEN SOCIAL @ BRIDGE PARK

SCALE: 3/16" = 1'-0"

NORTH



KITCHEN SOCIAL

PROPOSED EAST ELEVATION - MAIN ENTRY



43 E. MARKET ST. SUITE 200 | AKRON, OHIO 44308  
 VOICE: 330.475.1522 | WWW.BURGE-ARCHITECTURE.COM

CODP-08





**20-18 KITCHEN SOCIAL - OVERALL PRIMARY / SECONDARY D-2 NORTH FAÇADE MATERIALS % CALCULATION 2021-03-31**

FAÇADE	MATERIAL	PRIMARY/SECONDARY	AREA (s.f.)	%	ACTUAL	REQUIRED	MET?	REMARKS
NORTH	TOTAL AREA OF FAÇADE		7,061 s.f.	100%				
	MINUS FAÇADE DOOR AREAS		490 s.f.					
	EQUALS NET AREA		6,571 s.f.					
	MINUS MEASURED SECONDARY MATERIALS		1,764 s.f.					
	EQUALS PRIMARY MATERIALS		4,807 s.f.					
	PRIMARY MATERIALS		4,807 s.f.					
	DIVIDED BY NET AREA		6,571 s.f.					
	EQUALS % OF PRIMARY MATERIALS				73%			
	SECONDARY MATERIALS		1,764 s.f.					
	DIVIDED BY NET AREA		6,571 s.f.					
EQUALS % OF SECONDARY MATERIALS				27%				
	BRICK							NOTE 1
	STOREFRONT & GLASS	PRIMARY	4,807 s.f.	73%	73%	>80%	NO	Matches existing storefront in SW 7075 Gray Color
	O.H. DOORS & GLASS							C.H.I. 3297 Full-View Alum. Insulated- Powder Coat - RAL 7012 Gray
	FIBER CEMENT SIDING							NICHHA Vintage Wood - Ash Gray
	STEEL	SECONDARY	1,764 s.f.	27%	27%	< 20%	NO	In SW 7075 Gray Color
	ARCHITECTURAL METAL							

**REMARKS KEY:**

NOTE 1: EXISTING BRICK MASONRY PIERS TO REMAIN IN PLACE WITH NO CHANGE.  
 NOTE 2: EXISTING GLAZED O.H. DOORS

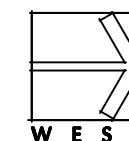
**20-18 KITCHEN SOCIAL - E, N & W FAÇADE TRANSPARENCY - D-2 2021-03-31**

ELEVATION	GROUND STORY AREA (s.f.)	TRANSPARENCY Y (s.f.)	REQUIRED %	PROVIDED %	MET ?	REMARKS
EAST	3,139 s.f.	1,462 s.f.	60%	47%		AT 16'-0" HIGH FAÇADE NONE OF THE EXISTING ELEVATIONS MEET THE 60% TRANSPARENCY
NORTH	1,392 s.f.	555 s.f.	60%	40%	T.B.D.	
WEST	3,790 s.f.	1,885 s.f.	60%	50%		



**KITCHEN SOCIAL**

**OVERALL NORTH ELEVATION**

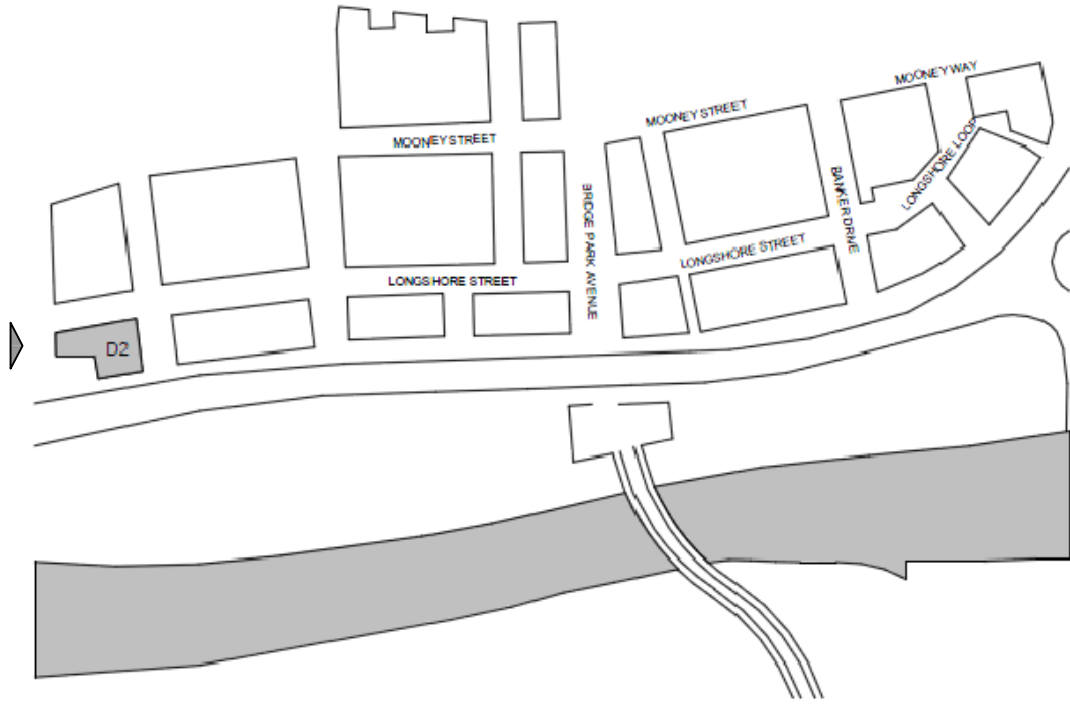


ALAN R. BURGE  
**ARCHITECTURE**

43 E. MARKET ST. SUITE 200 | AKRON, OHIO 44308  
 VOICE: 330.475.1522 | WWW.BURGE-ARCHITECTURE.COM

**CODP-09**

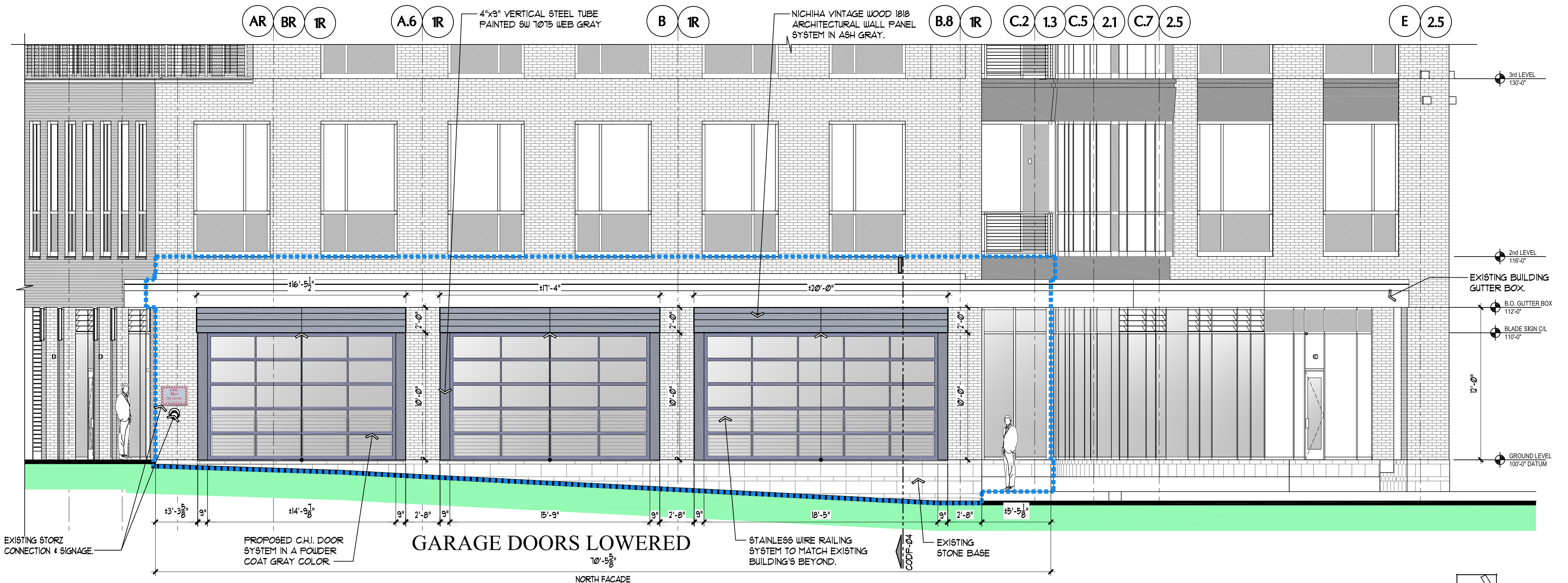




20-18 KITCHEN SOCIAL - FAÇADE MATERIALS - CORRIDOR BUILDING D-2 - 16' GROUND STORY WITHIN LEASE OUTLINE								2021-03-31
ELEVATION	MATERIAL	PRIMARY/SECONDARY	AREA (s.f.)	%	ACTUAL	REQUIRED	MET?	REMARKS
EAST	TOTAL AREA -KITCHEN SOCIAL FAÇADE ONLY		551 s.f.	100%				
	<b>MATERIAL</b>							
	1	BRICK / STONE	208 s.f.	38%				NOTE 1
	2	STOREFRONT & GLASS	83 s.f.	15%	75%	70%	YES	Nanawall or approved equal.
	3	FOLDING DOORS & GLASS	119 s.f.	22%				Mos Metalica Pol Ret Porcelain Wall Tile - 24 in.
	4	PORCELAIN TILE & COUNTER	55 s.f.	10%				Match Existing Airolite sight proof louver in SW 7075 gray
	5	LOUVERS	50 s.f.	9%	25%	< 30 %	YES	NOTE 2
6	STEEL	13 s.f.	2%					
7	ARCHITECTURAL METAL	27 s.f.	5%					
NORTH	TOTAL AREA -KITCHEN SOCIAL FAÇADE ONLY		1,271 s.f.	100%				
	<b>MATERIAL</b>							
	1	BRICK / STONE	363 s.f.	29%				NOTE 1
	2	STOREFRONT & GLASS	65 s.f.	5%	72%	80%	T.B.D.	C.H.I. 3297 FULL-VIEW ALUM. INSULATED POWDER COAT - RAL 7012 GRAY
	3	O.H. DOOR - FULLY GLAZED	490 s.f.	38%				
	4	FIBER CEMENT SIDING	108 s.f.	8%				
	5	STEEL	48 s.f.	4%	28%	< 20 %	T.B.D.	NOTE 2
6	ARCHITECTURAL METAL	197 s.f.	16%					
WEST	TOTAL AREA -KITCHEN SOCIAL FAÇADE ONLY		1,466 s.f.	100%				
	<b>MATERIAL</b>							
	1	BRICK / STONE	354 s.f.	24%				NOTE 1
	2	STOREFRONT & GLASS	816 s.f.	56%	80%	50%	YES	
	3							
	4	LOUVERS	49 s.f.	3%				Match Existing Airolite sight proof louver in SW 7075 gray
	5	ARCHITECTURAL METAL	246 s.f.	17%	20%	< 50 %	YES	NOTE 2
6								

REMARKS KEY:  
 NOTE 1: EXISTING BRICK MASONRY PIERS & STONE SILLS TO REMAIN IN PLACE WITH NO CHANGE.  
 NOTE 2: EXISTING ARCHITECTURAL METAL PANELS TO REMAIN IN PLACE WITH NO CHANGE.

EXISTING BRICK



1. - PROPOSED NORTH ELEVATION

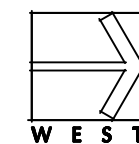
KITCHEN SOCIAL @ BRIDGE PARK

SCALE: 3/16" = 1'-0"



KITCHEN SOCIAL

PROPOSED NORTH ELEVATION



ALAN R. BURGE ARCHITECTURE

43 E. MARKET ST. SUITE 200 | AKRON, OHIO 44308  
 VOICE: 330.475.1522 | WWW.BURGE-ARCHITECTURE.COM

CODP-10





**20-18 KITCHEN SOCIAL - OVERALL PRIMARY / SECONDARY D-2 WEST FAÇADE MATERIALS % CALCULATION 2021-03-31**

FAÇADE MATERIAL	PRIMARY/SECONDARY	AREA (s.f.)	%	ACTUAL	REQUIRED	MET?	REMARKS
<b>WEST</b>							
TOTAL AREA OF FAÇADE		17,691 s.f.	####				
MINUS GROUND STORY WINDOWS & FAÇADE DOOR		382 s.f.					
EQUALS NET AREA		17,309 s.f.					
MINUS MEASURED SECONDARY MATERIALS		3,845 s.f.					
EQUALS PRIMARY MATERIALS		13,464 s.f.					
PRIMARY MATERIALS		13,464 s.f.					
DIVIDED BY NET AREA		17,309 s.f.					
EQUALS % OF PRIMARY MATERIALS			78%				
SECONDARY MATERIALS		3,845 s.f.					
DIVIDED BY NET AREA		17,309 s.f.					
EQUALS % OF SECONDARY MATERIALS			22%				
BRICK							
STOREFRONT & GLASS	PRIMARY	13,464 s.f.	78%	78%	>50%	YES	NOTE 1 Matches existing storefront - SW 7075 Gray Color
O.H. DOORS & GLASS							NOTE 2
LOUVERS							Matches Existing Airoilite Siteproof Louver
ARCHITECTURAL METAL	SECONDARY	3,845 s.f.	22%	22%	< 50%	YES	EXISTING

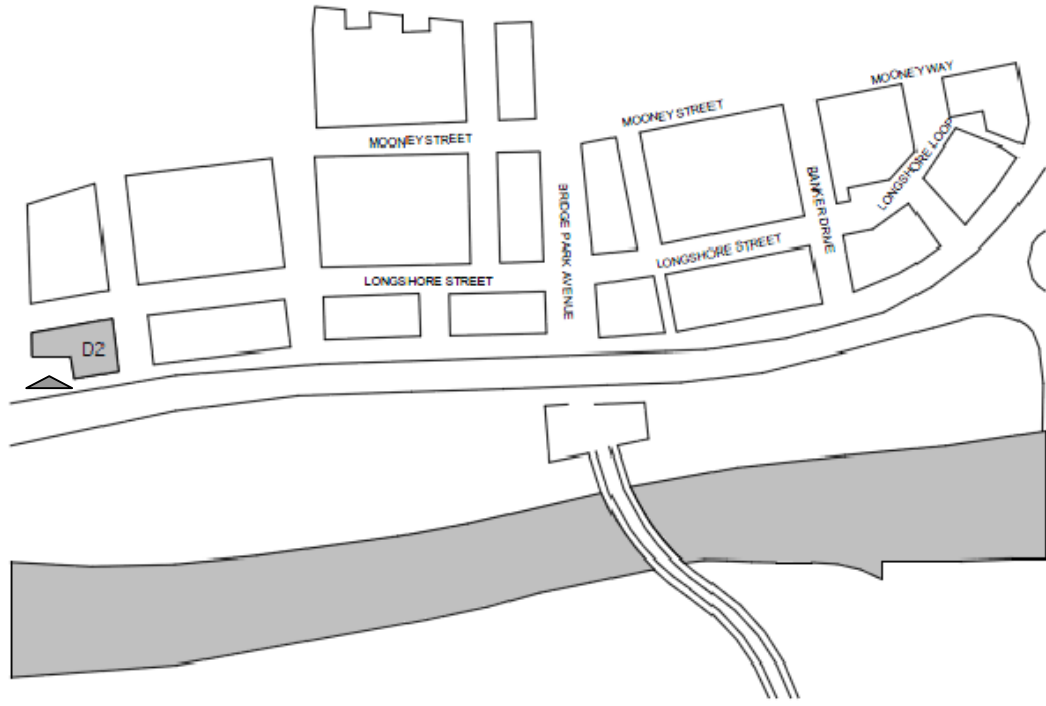
**REMARKS KEY:**

NOTE 1: EXISTING BRICK MASONRY PIERS TO REMAIN IN PLACE WITH NO CHANGE.  
 NOTE 2: EXISTING GLAZED O.H. DOORS

**20-18 KITCHEN SOCIAL - E, N & W FAÇADE TRANSPARENCY - D-2 2021-03-31**

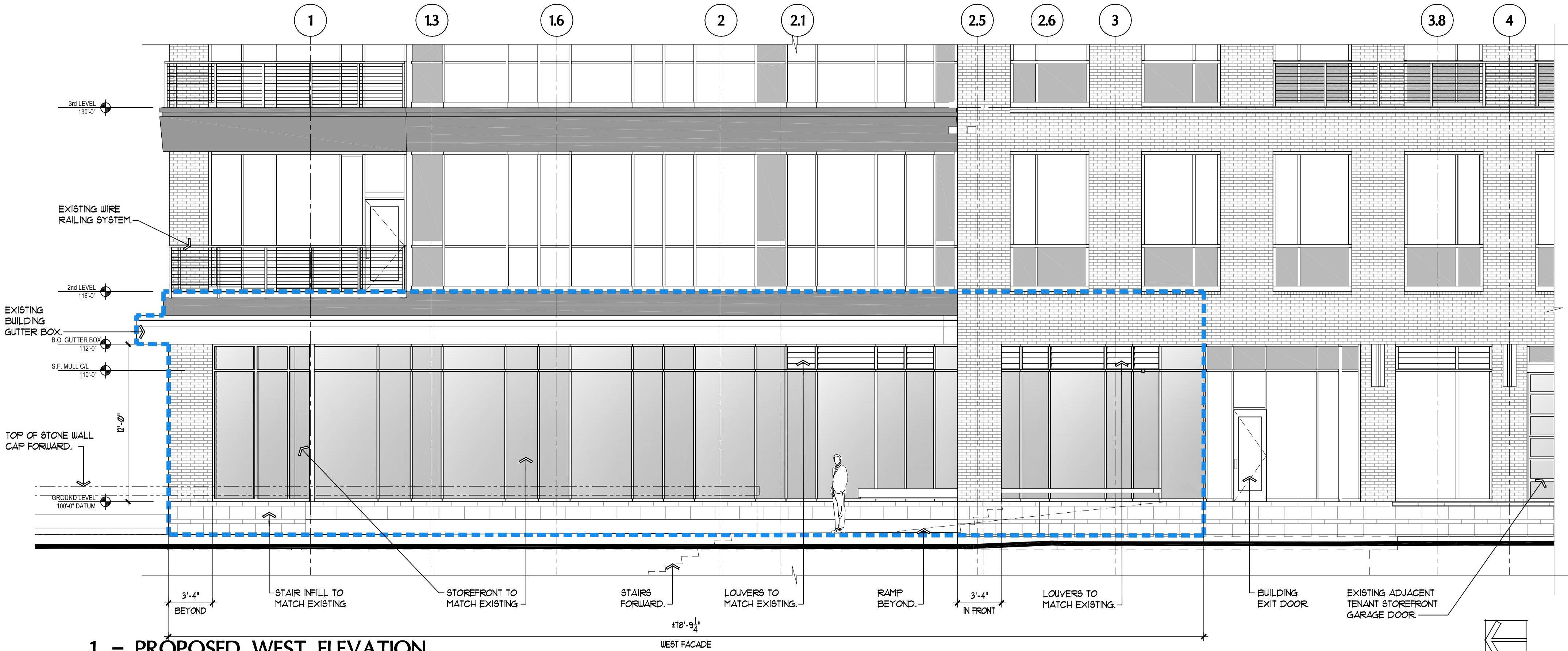
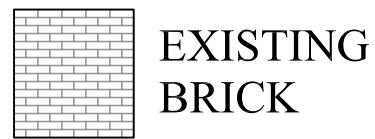
ELEVATION	GROUND STORY AREA (s.f.)	TRANSPARENCY Y (s.f.)	REQUIRED %	PROVIDED %	MET ?	REMARKS
EAST	3,139 s.f.	1,462 s.f.	60%	47%		AT 16'-0" HIGH FAÇADE NONE OF THE EXISTING ELEVATIONS MEET THE 60% TRANSPARENCY
NORTH	1,392 s.f.	555 s.f.	60%	40%	T.B.D.	
WEST	3,790 s.f.	1,885 s.f.	60%	50%		





20-18 KITCHEN SOCIAL - FAÇADE MATERIALS - CORRIDOR BUILDING D-2 - 16' GROUND STORY WITHIN LEASE OUTLINE								2021-03-31
ELEVATION	MATERIAL	PRIMARY/SECONDARY	AREA (s.f.)	%	ACTUAL	REQUIRED	MET?	REMARKS
<b>EAST</b>			TOTAL AREA -KITCHEN SOCIAL FAÇADE ONLY	551 s.f.	100%			
<b>MATERIAL</b>								
1	BRICK / STONE	PRIMARY	208 s.f.	38%				NOTE 1
2	STOREFRONT & GLASS		83 s.f.	15%	75%	70%	YES	Nanawall or approved equal.
3	FOLDING DOORS & GLASS		119 s.f.	22%				Mos Metalica Pol Ret Porcelain Wall Tile - 24 in.
4	PORCELAIN TILE & COUNTER	SECONDARY	55 s.f.	10%				Match Existing Airoilite sight proof louver in SW 7075 gray
5	LOUVERS		50 s.f.	9%	25%	< 30 %	YES	
6	STEEL		13 s.f.	2%				
7	ARCHITECTURAL METAL		27 s.f.	5%				NOTE 2
<b>NORTH</b>			TOTAL AREA -KITCHEN SOCIAL FAÇADE ONLY	1,271 s.f.	100%			
<b>MATERIAL</b>								
1	BRICK / STONE	PRIMARY	363 s.f.	29%				NOTE 1
2	STOREFRONT & GLASS		65 s.f.	5%	72%	80%	T.B.D.	C.H.I. 3297 FULL-VIEW ALUM. INSULATED POWDER COAT - RAL 7012 GRAY
3	O.H. DOOR - FULLY GLAZED		490 s.f.	38%				
4	FIBER CEMENT SIDING	SECONDARY	108 s.f.	8%				
5	STEEL		48 s.f.	4%	28%	< 20 %	T.B.D.	
6	ARCHITECTURAL METAL		197 s.f.	16%				NOTE 2
<b>WEST</b>			TOTAL AREA -KITCHEN SOCIAL FAÇADE ONLY	1,466 s.f.	100%			
<b>MATERIAL</b>								
1	BRICK / STONE	PRIMARY	354 s.f.	24%				NOTE 1
2	STOREFRONT & GLASS		816 s.f.	56%	80%	50%	YES	
3		SECONDARY						
4	LOUVERS		49 s.f.	3%				Match Existing Airoilite sight proof louver in SW 7075 gray
5	ARCHITECTURAL METAL		246 s.f.	17%	20%	< 50 %	YES	NOTE 2

REMARKS KEY:  
 NOTE 1: EXISTING BRICK MASONRY PIERS & STONE SILLS TO REMAIN IN PLACE WITH NO CHANGE.  
 NOTE 2: EXISTING ARCHITECTURAL METAL PANELS TO REMAIN IN PLACE WITH NO CHANGE.



1. - PROPOSED WEST ELEVATION

KITCHEN SOCIAL @ BRIDGE PARK

SCALE: 3/16" = 1'-0"

NORTH



KITCHEN SOCIAL

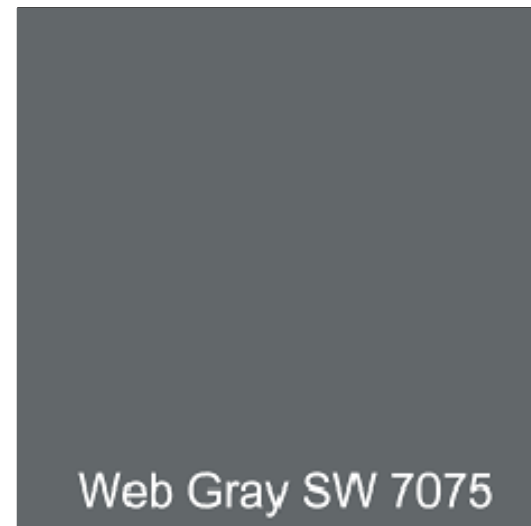
PROPOSED WEST ELEVATION

ALAN R. BURGE  
 A B A  
 ARCHITECTURE

43 E. MARKET ST. SUITE 200 | AKRON, OHIO 44308  
 VOICE: 330.475.1522 | WWW.BURGE-ARCHITECTURE.COM

CODP-12

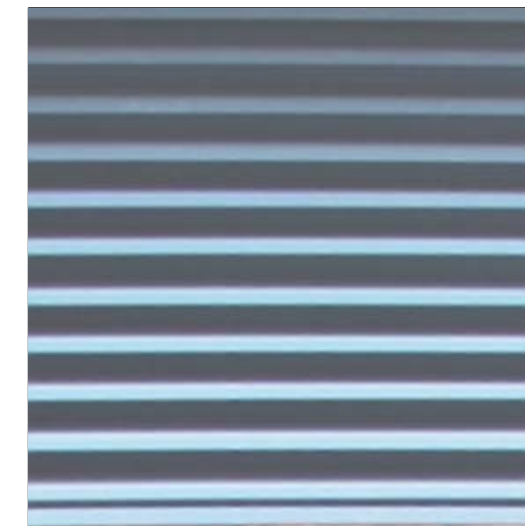




1. PAIN  
 SHERWIN-WILLIAMS  
 WEB GRAY SW 7075.  
 EXISTING D2- BUILDING  
 SPEC. ALL PAINTED  
 STOREFRONT &  
 EXPOSED STEEL.



4. EXISTING EAST &  
 WEST BRICK MASONRY  
 EXISTING D2-  
 BUILDING SPEC.



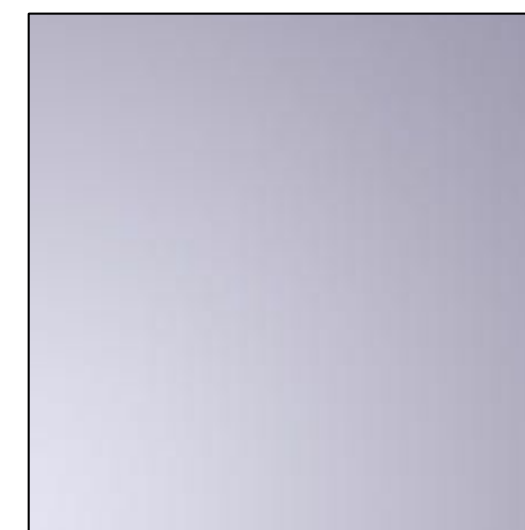
7. EXISTING LOUVERS  
 EXISTING D2-  
 BUILDING SPEC.  
 AIROLITE SIGHT  
 PROOF LOUVER K605.  
 COLOR TO MATCH  
 EXISTING.



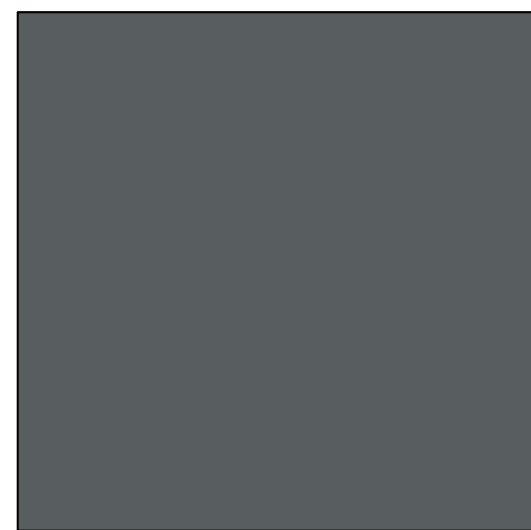
2. PORCELAIN TILE  
 MOS METALICA  
 POL RET  
 PORCELAIN  
 WALL TILE.  
 EAST SILL WALL.



5. EXISTING NORTH &  
 WEST BRICK  
 MASONRY  
 EXISTING D2-  
 BUILDING SPEC.



8. LOW-E & TEMPERED  
 GLASS.  
 BY C.H.I. OH DOOR &  
 STOREFRONT VENDOR.



3. POWDER COAT  
 TIGER DRYLAC  
 POWDER COATINGS  
 RAL 7012 BASALT  
 GRAY. ALL C.H.I. OH  
 DOORS.

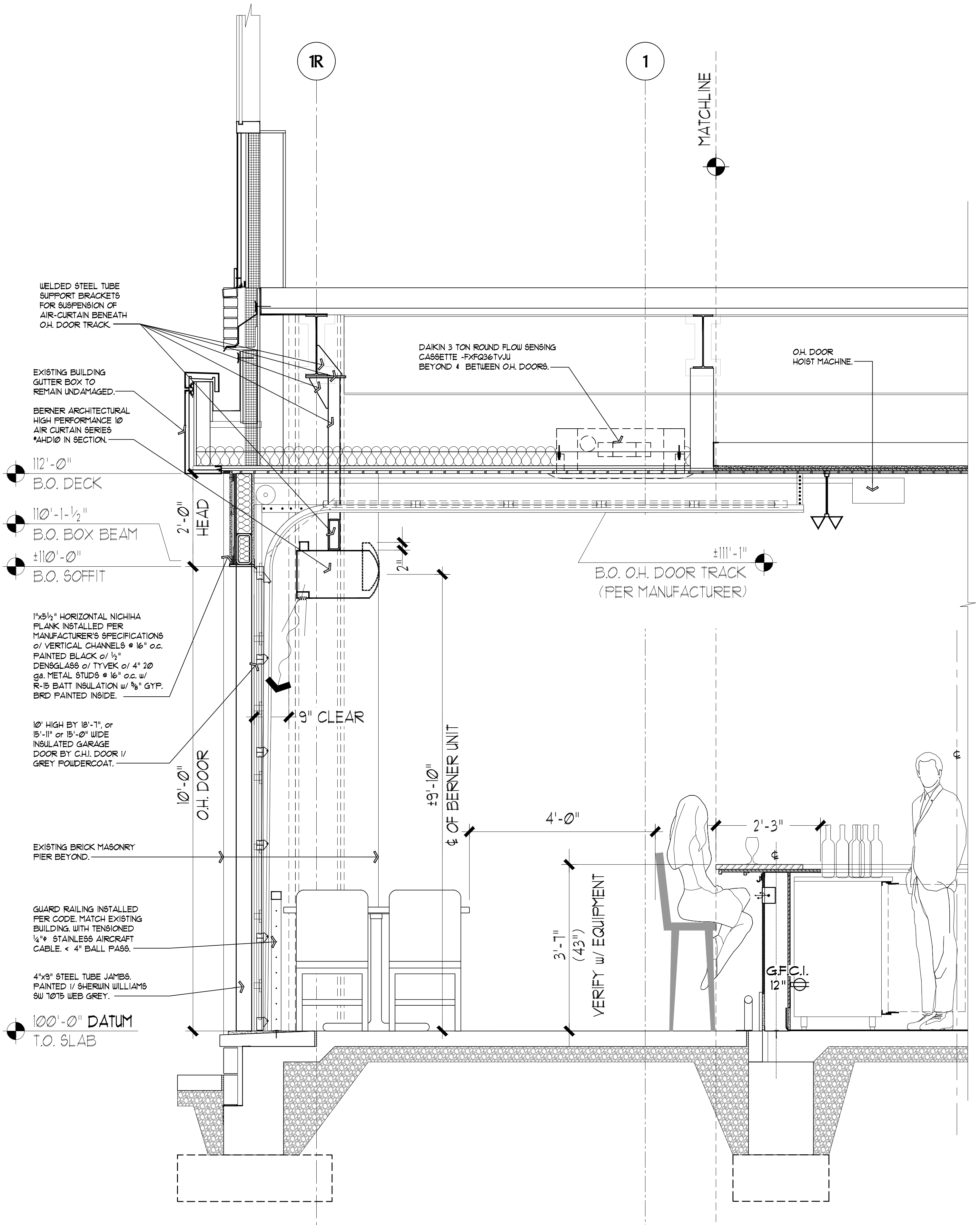


6. EXISTING METAL  
 PANEL.  
 EXISTING D2-  
 BUILDING SPEC.



9. EXISTING TERRACE  
 CEILING.  
 EXISTING D2-  
 BUILDING SPEC.





KITCHEN SOCIAL PRELIM CROSS SECTION THRU TERRACE

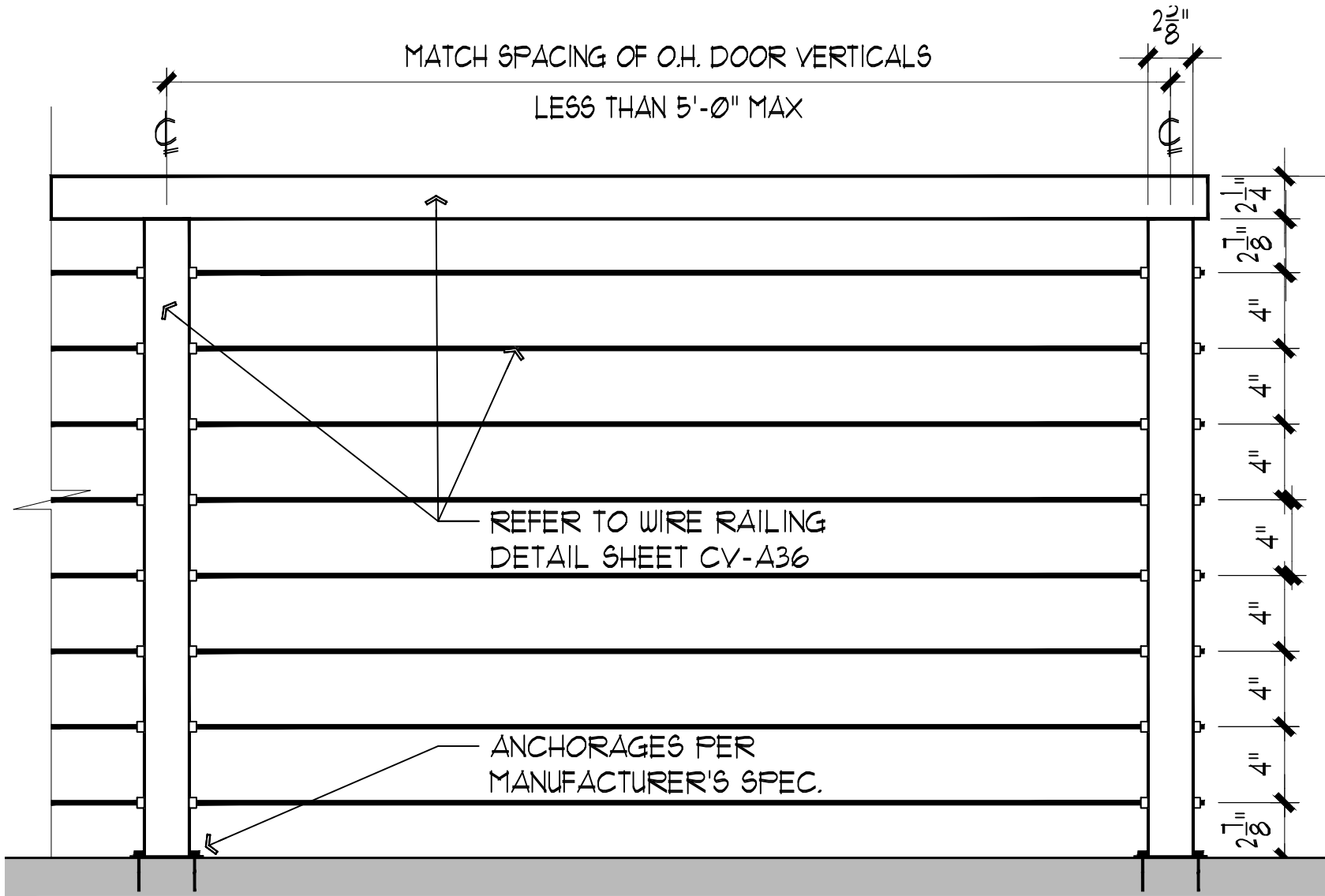


ALAN R. BURGE  
A B A  
ARCHITECTURE

43 E. MARKET ST. SUITE 200 | AKRON, OHIO 44308  
VOICE: 330.475.1522 | WWW.BURGE-ARCHITECTURE.COM

CODP-14





Kitchen Social

KITCHEN SOCIAL TERRACE WIRE RAILING ELEVATION

SCALE: 1-1/2" = 1'-0"

03 / 30 / 2021



ALAN R. BURGE  
ARCHITECTURE

43 E. MARKET ST. SUITE 200 | AKRON, OHIO 44308  
VOICE: 330-475-1522 | WWW.BURGE-ARCHITECTURE.COM

CODP-15

LONG SHORE STREET

CODP-01

1.3

1.6

2

2.1

PHASE 2

VESTIBULE  
101  
MAIN ENTRY

TO GO  
PICKUP  
101b

1R

A

BR

AR

BERNER AHD 10  
ARCHITECTURAL HIGH  
PERFORMANCE 10 AIR  
CURTAINS.

DAIKIN 3 TON ROUND  
FLOW SENSING CASSETTE  
-FXFQ36TVJU.

A.6

FRESH AIR DUCT

CODP-08

A.8

BERNER AHD 10  
ARCHITECTURAL HIGH  
PERFORMANCE 10 AIR  
CURTAINS.

DAIKIN 3 TON ROUND  
FLOW SENSING CASSETTE  
-FXFQ36TVJU.

B

FRESH AIR DUCT

BAR  
103

B.8

BERNER AHD 10  
ARCHITECTURAL HIGH  
PERFORMANCE 10 AIR  
CURTAINS.

C

CC

C.2

PHASE 1  
LIMIT OF WORK

CODP-09

CODP-12



KITCHEN SOCIAL

PATIO TERRACE RCP PLAN



ALAN R. BURGE  
ARCHITECTURE

43 E. MARKET ST. SUITE 200 | AKRON, OHIO 44308  
VOICE: 330.475.1522 | WWW.BURGE-ARCHITECTURE.COM

Kitchen Social

SCALE: 1/4" = 1'-0"

03 / 25 / 2021

20-18  
© 2021 ABA