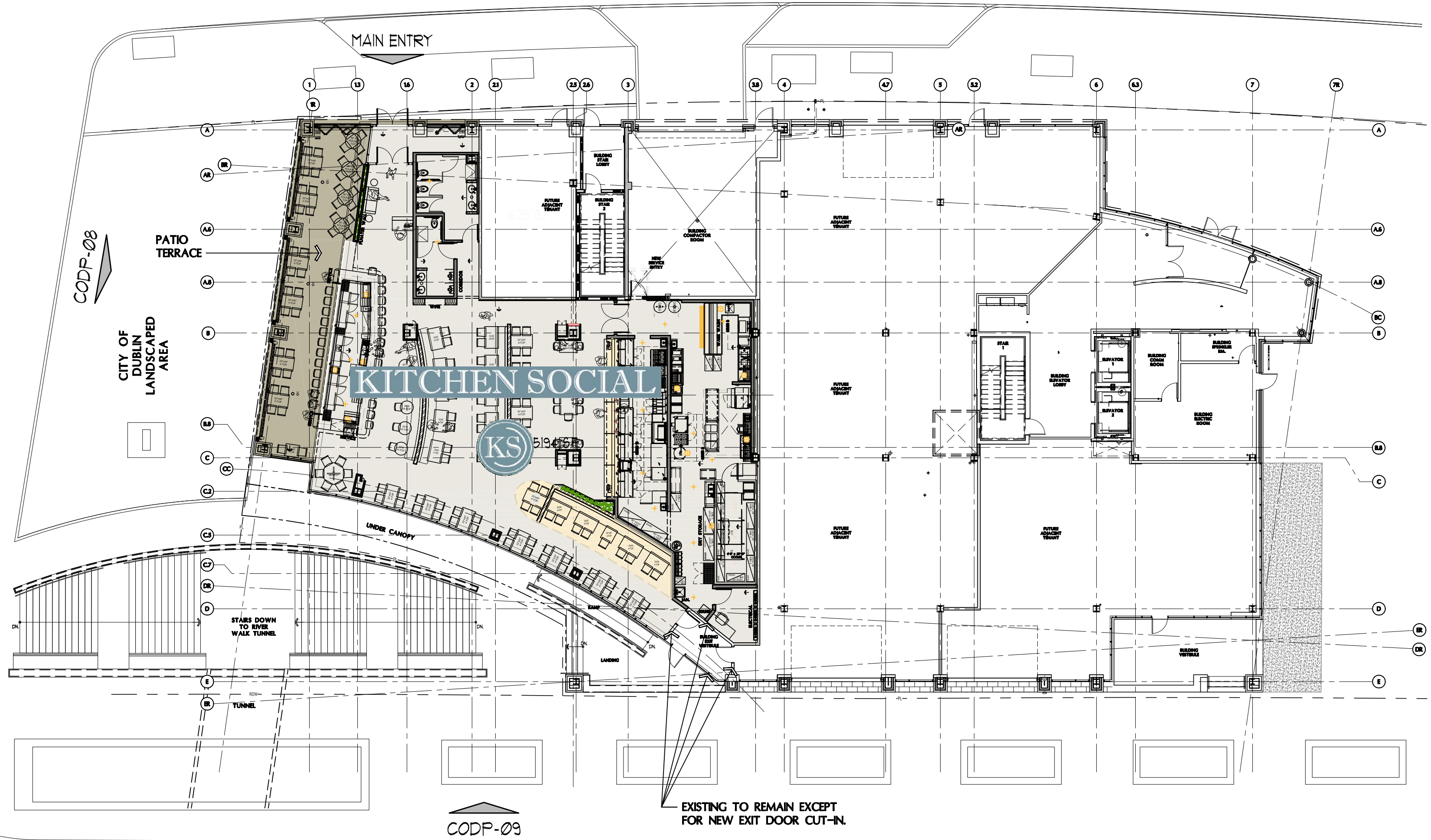


JOHN SHIELDS PARKWAY

CODP-01

LONGSHORE STREET



CODP-09

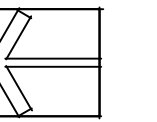
EXISTING TO REMAIN EXCEPT FOR NEW EXIT DOOR CUT-IN

RIVERSIDE DRIVE

# 1. - SITE PLAN

KITCHEN SOCIAL @ BRIDGE PARK - BUILDING D-2

SCALE: 1/16" = 1'-0"



NORTH



Kitchen Social

## KITCHEN SOCIAL

SCALE: 1/16" = 1'-0"

## SITE PLAN

03 / 19 / 2021



NORTH

ALAN R. BURGE  
**ABA**  
ARCHITECTURE

43 E. MARKET ST. SUITE 200 | AKRON, OHIO 44308  
VOICE: 330.475.1522 | WWW.BURGE-ARCHITECTURE.COM

CODP-01

20-18

© 2021 ABA









PORCELAIN WALL TILE



Kitchen Social - Bridge Park 6767 Longshore Street Suite 110 Dublin, OH 43017  
03/08/2021

ALAN R. BURGE  
ARCHITECTURE

43 EAST MARKET STREET #200 | AKRON, OHIO 44308  
VOICE: 330.475.1522 | FAX: 330.368.4291 | WWW.BURGE-ARCHITECTURE.COM





SECONDARY MATERIAL -  
FIBER CEMENT BOARD

10' TALL OVERHEAD  
INSULATED GLASS GARAGE  
DOORS



Kitchen Social - Bridge Park 6767 Longshore Street Suite 110 Dublin, OH 43017  
03/08/2021

ALAN R. BURGE  
ARCHITECTURE

43 EAST MARKET STREET #200 | AKRON, OHIO 44308  
VOICE: 330.475.1522 | FAX: 330.368.4291 | WWW.BURGE-ARCHITECTURE.COM





Kitchen Social - Bridge Park 6767 Longshore Street Suite 110 Dublin, OH 43017  
03/08/2021

ALAN R. BURGE  
ARCHITECTURE

43 EAST MARKET STREET #200 | AKRON, OHIO 44308  
VOICE: 330.475.1522 | FAX: 330.368.4291 | WWW.BURGE-ARCHITECTURE.COM



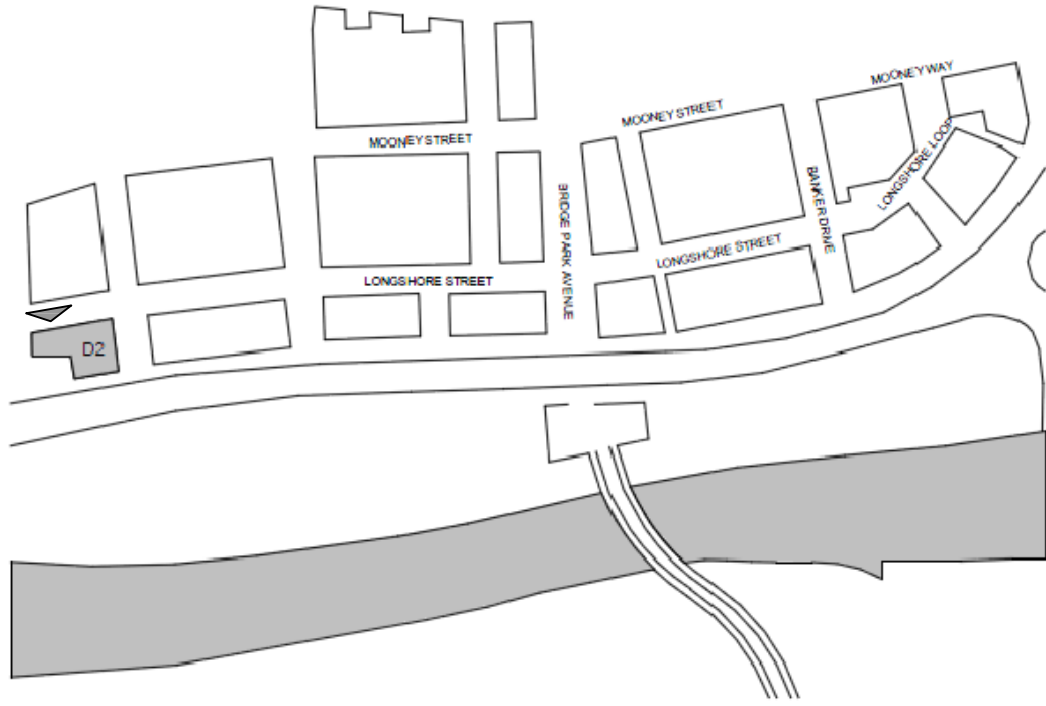


Kitchen Social - Bridge Park 6767 Longshore Street Suite 110 Dublin, OH 43017  
03/08/2021

ALAN R. BURGE  
ARCHITECTURE

43 EAST MARKET STREET #200 | AKRON, OHIO 44308  
VOICE: 330.475.1522 | FAX: 330.368.4291 | WWW.BURGE-ARCHITECTURE.COM





EXISTING BRICK

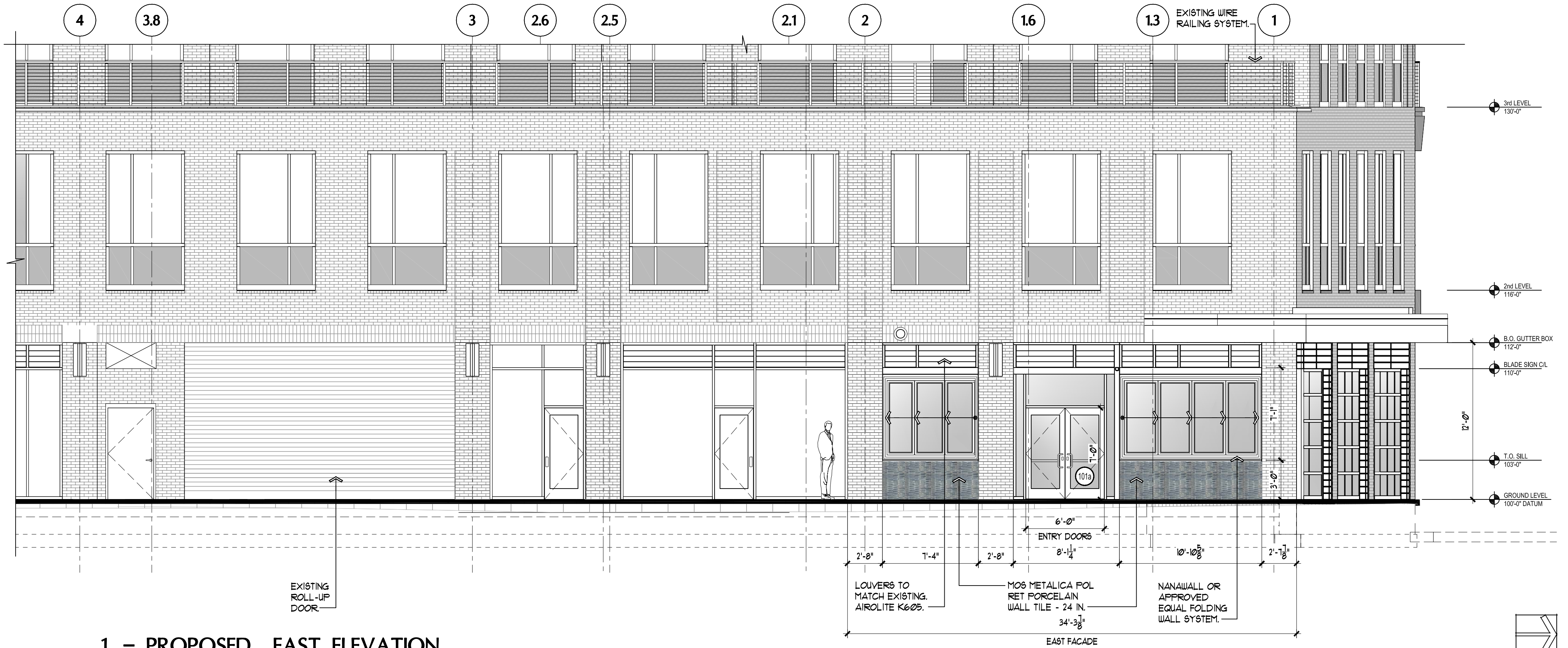
20-18 KITCHEN SOCIAL - FAÇADE MATERIALS - CORRIDOR BUILDING D-2 - GROUND LEVEL 2021-03-19

ELEVATION	MATERIAL	PRIMARY/SECONDARY	AREA (s.f.)	%	ACTUAL	REQUIRED	MET?	REMARKS
EAST	TOTAL AREA		412 s.f.	100%				
	BRICK	PRIMARY	96 s.f.	23%	100%	80%	YES	NOTE 1
	PORCELAIN TILE & COUNTER	NEW SECONDARY	55 s.f.	13%				Mos Metalica Pol Ret Porcelain Wall Tile - 24 in.
	LOUVERS	MISC.	50 s.f.	12%				
	STOREFRONT & GLASS	PRIMARY	81 s.f.	20%				
FOLDING DOORS & GLASS	NEW PRIMARY	129 s.f.	32%	Nanawall or approved equal.				
NORTH	TOTAL AREA		845 s.f.	100%				
	BRICK	PRIMARY	133 s.f.	16%	100%	80%	YES	NOTE 1
	FIBER CEMENT SIDING	SECONDARY	108 s.f.	13%				
	STOREFRONT & GLASS	PRIMARY	65 s.f.	8%				
	STEEL	PRIMARY	48 s.f.	6%				
O.H. DOOR - FULLY GLAZED	NEW PRIMARY	491 s.f.	58%	C.H.I. 3297 FULL-VIEW ALUM. INSULATED IN GRAY POWDER COAT				
WEST	TOTAL AREA		1031 s.f.	100%				
	BRICK	PRIMARY	79 s.f.	8%	100%	80%	YES	NOTE 1
	PORCELAIN TILE & COUNTER	NEW SECONDARY	0 s.f.	0%				
	LOUVERS	MISC.	49 s.f.	5%				
	STOREFRONT & GLASS	PRIMARY	897 s.f.	87%				

REMARKS KEY:  
NOTE 1 : EXISTING BRCK MASONRY PIERS TO REMAIN IN PLACE WITH NO CHANGE.

20-18 KITCHEN SOCIAL - FAÇADE TRANSPARENCY - CORRIDOR BUILDING D-2 2021-03-19

ELEVATION	GROUND FLOOR AREA (s.f.)	TRANSPARENCY (s.f.)	REQUIRED %	PROVIDED %	AGGREGATE AREA (s.f.)	TRANSPARENCY (s.f.)	REQUIRED %	PROVIDED %	MET?	REMARKS	
EAST	412 s.f.	210 s.f.	60%	51%	2288 S.F.	1663 s.f.	60%	72%	YES		
NORTH	845 s.f.	556 s.f.	60%	66%							
WEST	1031 s.f.	897 s.f.	60%	87%							



1. - PROPOSED EAST ELEVATION

KITCHEN SOCIAL @ BRIDGE PARK

SCALE: 3/16" = 1'-0"

NORTH



KITCHEN SOCIAL

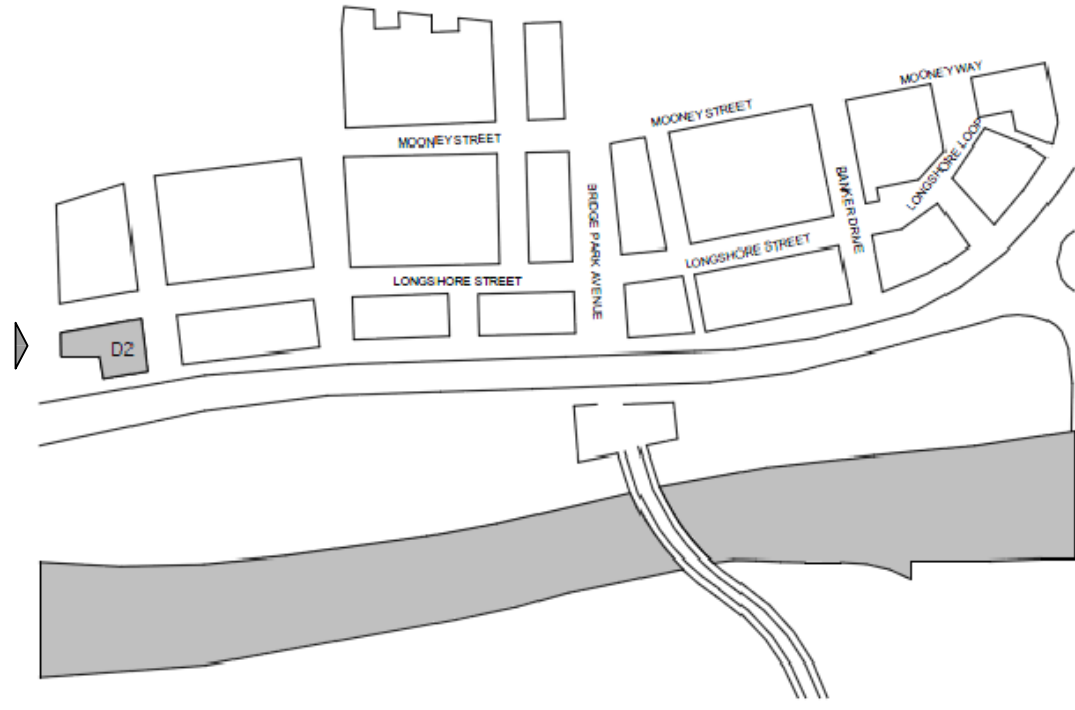
PROPOSED EAST ELEVATION - MAIN ENTRY



43 E. MARKET ST. SUITE 200 | AKRON, OHIO 44308  
VOICE: 330.475.1522 | WWW.BURGE-ARCHITECTURE.COM

CODP-07





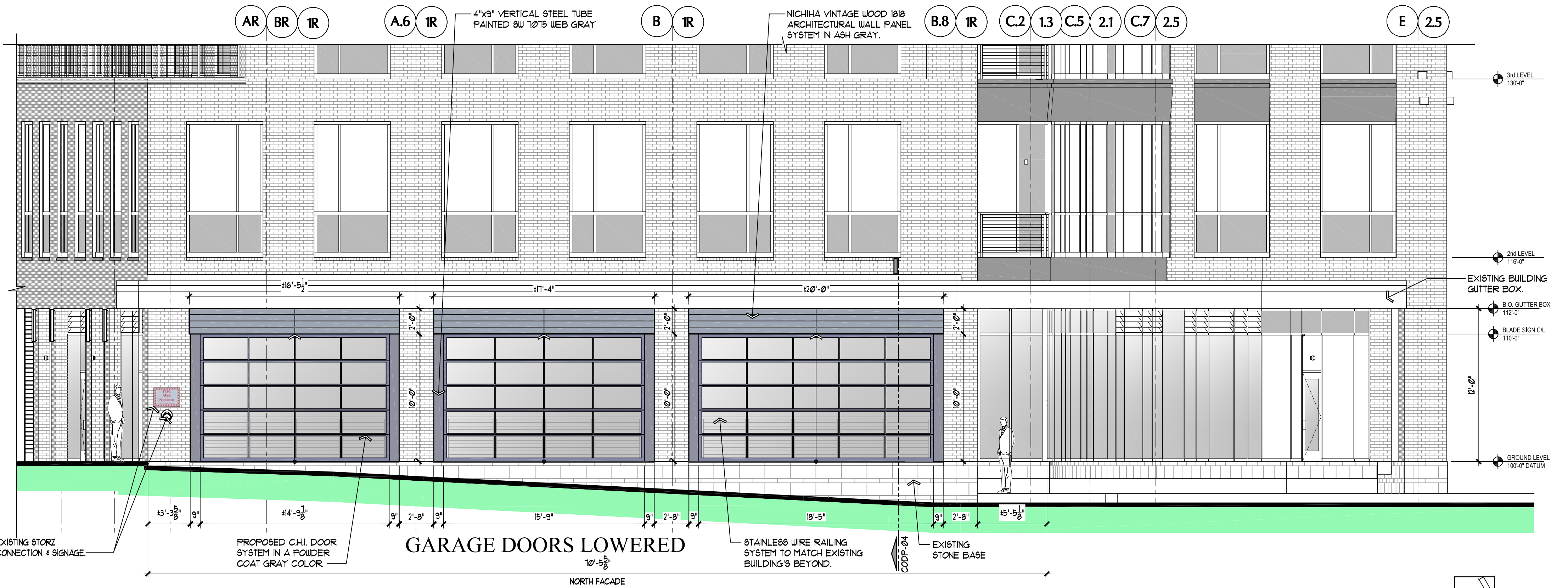
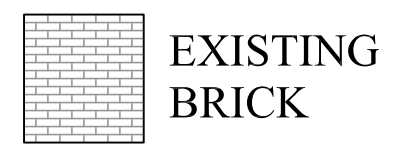
**20-18 KITCHEN SOCIAL - FAÇADE MATERIALS - CORRIDOR BUILDING D-2 - GROUND LEVEL** 2021-03-19

ELEVATION	MATERIAL	PRIMARY/SECONDARY	AREA (s.f.)	%	ACTUAL	REQUIRED	MET?	REMARKS
EAST	TOTAL AREA		412 s.f.	100%				
	BRICK	PRIMARY	96 s.f.	23%	100%	80%	YES	NOTE 1
	PORCELAIN TILE & COUNTER	NEW SECONDARY	55 s.f.	13%				Mos Metalica Pol Ret Porcelain Wall Tile - 24 in.
	LOUVERS	MISC.	50 s.f.	12%				
	STOREFRONT & GLASS	PRIMARY	81 s.f.	20%				
FOLDING DOORS & GLASS	NEW PRIMARY	129 s.f.	32%	Nanawall or approved equal.				
NORTH	TOTAL AREA		845 s.f.	100%				
	BRICK	PRIMARY	133 s.f.	16%	100%	80%	YES	NOTE 1
	FIBER CEMENT SIDING	SECONDARY	108 s.f.	13%				
	STOREFRONT & GLASS	PRIMARY	65 s.f.	8%				
	STEEL	PRIMARY	48 s.f.	6%				
O.H. DOOR - FULLY GLAZED	NEW PRIMARY	491 s.f.	58%	C.H.I. 3297 FULL-VIEW ALUM. INSULATED IN GRAY POWDER COAT				
WEST	TOTAL AREA		1031 s.f.	100%				
	BRICK	PRIMARY	79 s.f.	8%	100%	80%	YES	NOTE 1
	PORCELAIN TILE & COUNTER	NEW SECONDARY	0 s.f.	0%				
	LOUVERS	MISC.	49 s.f.	5%				
	STOREFRONT & GLASS	PRIMARY	897 s.f.	87%				

REMARKS KEY:  
NOTE 1 : EXISTING BRCK MASONRY PIERS TO REMAIN IN PLACE WITH NO CHANGE.

**20-18 KITCHEN SOCIAL - FAÇADE TRANSPARENCY - CORRIDOR BUILDING D-2** 2021-03-19

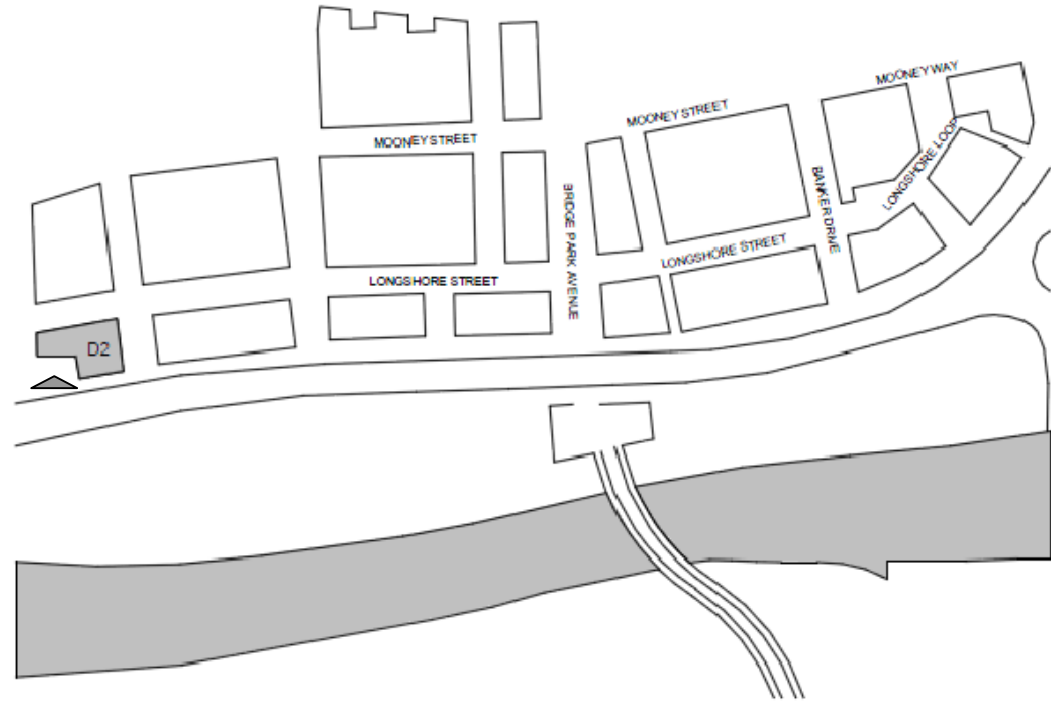
ELEVATION	GROUND FLOOR AREA (s.f.)	TRANSPARENCY (s.f.)	REQUIRED %	PROVIDED %	AGGREGATE AREA (s.f.)	TRANSPARENCY (s.f.)	REQUIRED %	PROVIDED %	MET?	REMARKS	
EAST	412 s.f.	210 s.f.	60%	51%	2288 S.F.	1663 s.f.	60%	72%	YES		
NORTH	845 s.f.	556 s.f.	60%	66%							
WEST	1031 s.f.	897 s.f.	60%	87%							



**1. - PROPOSED NORTH ELEVATION**  
KITCHEN SOCIAL @ BRIDGE PARK

SCALE: 3/16" = 1'-0" WEST





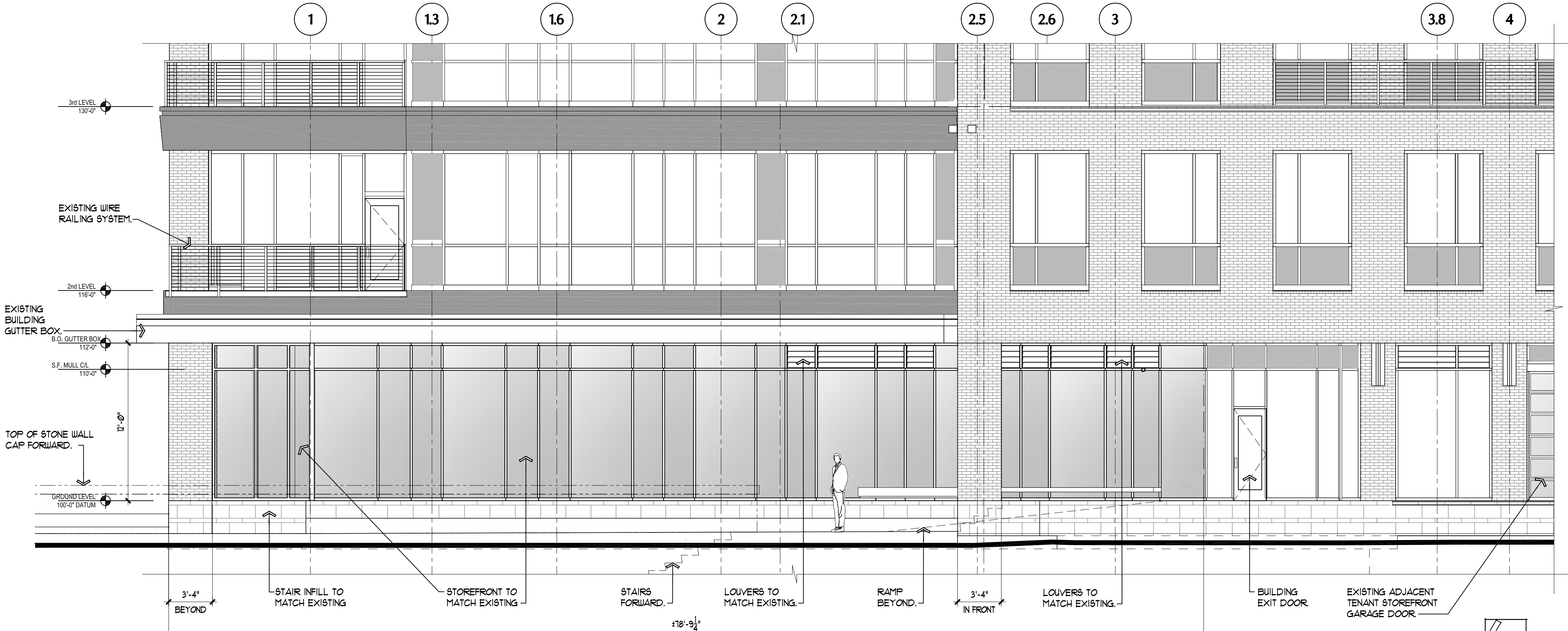
20-18 KITCHEN SOCIAL - FAÇADE MATERIALS - CORRIDOR BUILDING D-2 - GROUND LEVEL 2021-03-19

ELEVATION	MATERIAL	PRIMARY/SECONDARY	AREA (s.f.)	%	ACTUAL	REQUIRED	MET?	REMARKS
EAST	TOTAL AREA		412 s.f.	100%				
	BRICK	PRIMARY	96 s.f.	23%	100%	80%	YES	NOTE 1
	PORCELAIN TILE & COUNTER	NEW SECONDARY	55 s.f.	13%				Mos Metalica Pol Ret Porcelain Wall Tile - 24 in.
	LOUVERS	MISC.	50 s.f.	12%				
	STOREFRONT & GLASS	PRIMARY	81 s.f.	20%				
FOLDING DOORS & GLASS	NEW PRIMARY	129 s.f.	32%	Nanawall or approved equal.				
NORTH	TOTAL AREA		845 s.f.	100%				
	BRICK	PRIMARY	133 s.f.	16%	100%	80%	YES	NOTE 1
	FIBER CEMENT SIDING	SECONDARY	108 s.f.	13%				
	STOREFRONT & GLASS	PRIMARY	65 s.f.	8%				
	STEEL	PRIMARY	48 s.f.	6%				
O.H. DOOR - FULLY GLAZED	NEW PRIMARY	491 s.f.	58%	C.H.I. 3297 FULL-VIEW ALUM. INSULATED IN GRAY POWDER COAT				
WEST	TOTAL AREA		1031 s.f.	100%				
	BRICK	PRIMARY	79 s.f.	8%	100%	80%	YES	NOTE 1
	PORCELAIN TILE & COUNTER	NEW SECONDARY	0 s.f.	0%				
	LOUVERS	MISC.	49 s.f.	5%				
	STOREFRONT & GLASS	PRIMARY	897 s.f.	87%				

REMARKS KEY:  
NOTE 1 : EXISTING BRCK MASONRY PIERS TO REMAIN IN PLACE WITH NO CHANGE.

20-18 KITCHEN SOCIAL - FAÇADE TRANSPARENCY - CORRIDOR BUILDING D-2 2021-03-19

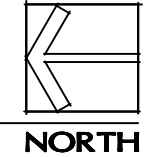
ELEVATION	GROUND FLOOR AREA (s.f.)	TRANSPARENCY (s.f.)	REQUIRED %	PROVIDED %	AGGREGATE AREA (s.f.)	TRANSPARENCY (s.f.)	REQUIRED %	PROVIDED %	MET?	REMARKS
EAST	412 s.f.	210 s.f.	60%	51%	2288 S.F.	1663 s.f.	60%	72%	YES	
NORTH	845 s.f.	556 s.f.	60%	66%						
WEST	1031 s.f.	897 s.f.	60%	87%						



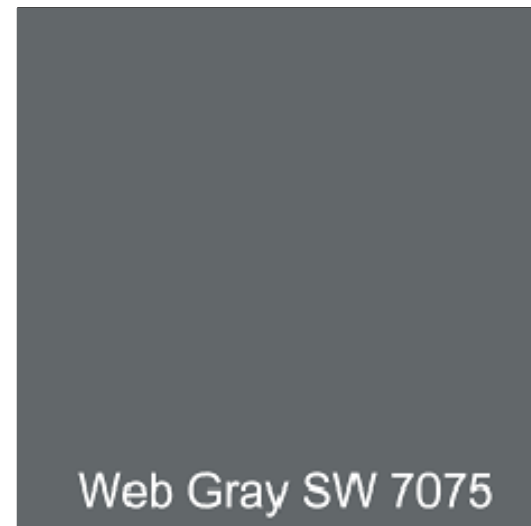
1. - PROPOSED WEST ELEVATION

KITCHEN SOCIAL @ BRIDGE PARK

SCALE: 3/16" = 1'-0"



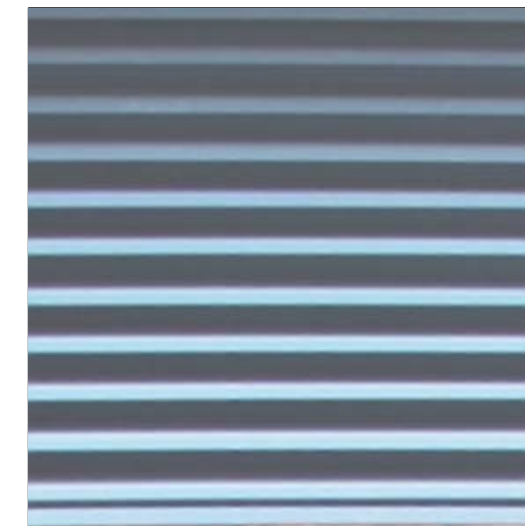




1. PAIN  
 SHERWIN-WILLIAMS  
 WEB GRAY SW 7075.  
 EXISTING D2- BUILDING  
 SPEC. ALL PAINTED  
 STOREFRONT &  
 EXPOSED STEEL.



4. EXISTING EAST &  
 WEST BRICK MASONRY  
 EXISTING D2-  
 BUILDING SPEC.



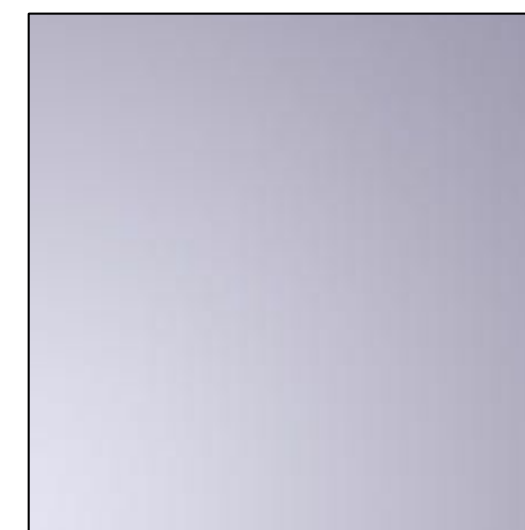
7. EXISTING LOUVERS  
 EXISTING D2-  
 BUILDING SPEC.  
 AIROLITE SIGHT  
 PROOF LOUVER K605.  
 COLOR TO MATCH  
 EXISTING.



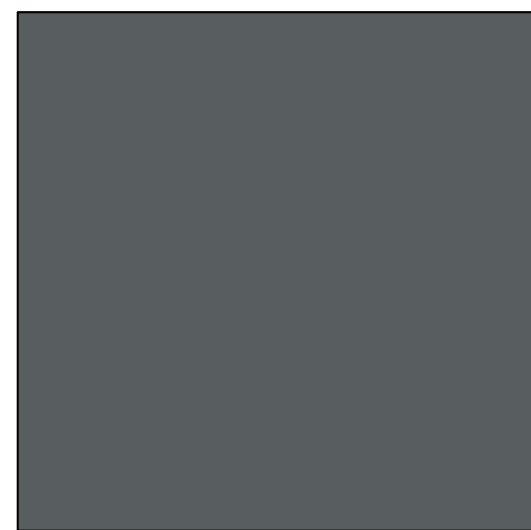
2. PORCELAIN TILE  
 MOS METALICA  
 POL RET  
 PORCELAIN  
 WALL TILE.  
 EAST SILL WALL.



5. EXISTING NORTH &  
 WEST BRICK  
 MASONRY  
 EXISTING D2-  
 BUILDING SPEC.



8. LOW-E & TEMPERED  
 GLASS.  
 BY C.H.I. OH DOOR &  
 STOREFRONT VENDOR.



3. POWDER COAT  
 TIGER DRYLAC  
 POWDER COATINGS  
 RAL 7012 BASALT  
 GRAY. ALL C.H.I. OH  
 DOORS.

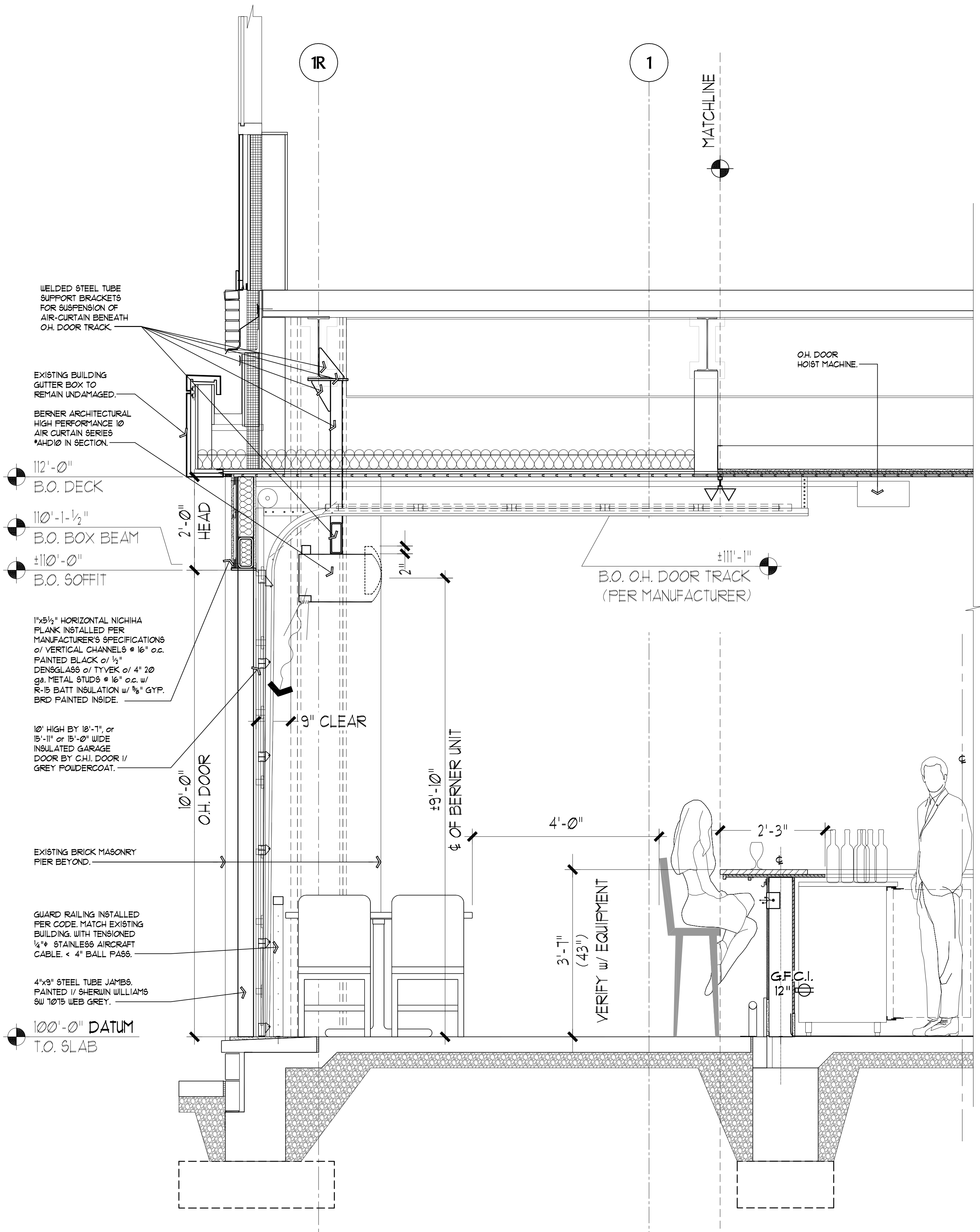


6. EXISTING METAL  
 PANEL.  
 EXISTING D2-  
 BUILDING SPEC.



9. EXISTING TERRACE  
 CEILING.  
 EXISTING D2-  
 BUILDING SPEC.





KITCHEN SOCIAL PRELIM CROSS SECTION TRU TERRACE

SCALE: 3/4" = 1'-0"

03 / 19 / 2021



43 E. MARKET ST. SUITE 200 | AKRON, OHIO 44308  
VOICE: 330.475.1522 | WWW.BURGE-ARCHITECTURE.COM

CODP-11