

WELCOME TO OUR VIRTUAL PUBLIC MEETING

GETTING STARTED

- The presentation will start soon
- You may not hear sound until the meeting begins

SUBMITTING QUESTIONS/COMMENTS

- To make a comment or ask a question during the meeting – click the hand icon in bottom right 🖐️
- Questions and comments will be addressed at the end of presentation



WE WILL BE WITH YOU SOON!



Sanitary Sewer Extension Area 1C Project

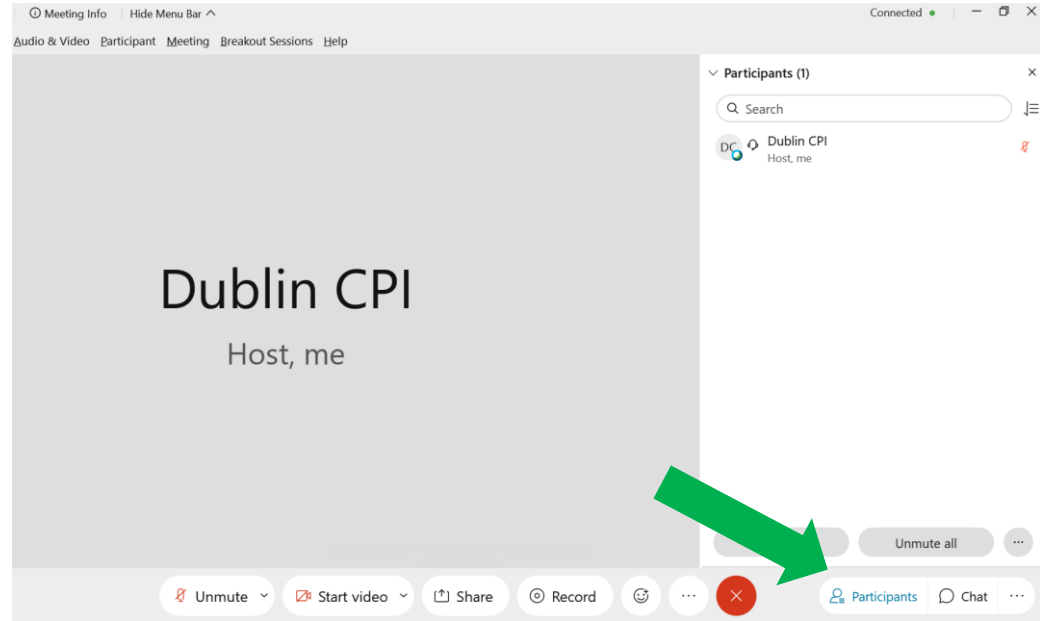
BRIAN GABLE, P.E., DEPUTY DIRECTOR OF ENGINEERING

MAY 26, 2021



SUBMITTING QUESTIONS AND COMMENTS

- To make a comment or ask a question during the meeting click the hand icon in bottom right (Click "participants") 🖐️
- Questions and comments will be addressed at the end of presentation
- Comments may also be made online during or after the meeting at DublinOhioUSA.gov/glencree



WELCOME TO OUR VIRTUAL PUBLIC MEETING

GROUND RULES

- This meeting is being streamed live and recorded; all comments are public record.
- Questions will be answered at the end of the presentation.
- Please keep comments/concerns relevant to this project and as specific as possible.
- When making comments, please keep them respectful. Demeaning, derogatory, or inflammatory comments will not be responded to.
- There may be instances in which we will respond to questions via email following the meeting if there is not adequate time to answer or if information must be gathered to respond.



SANITARY SEWER UTILITY EXTENSIONS

Agenda

1. Background/History
2. Project Description
3. Area 1C (Glencree Place)
Project Schedule
4. How do I connect?



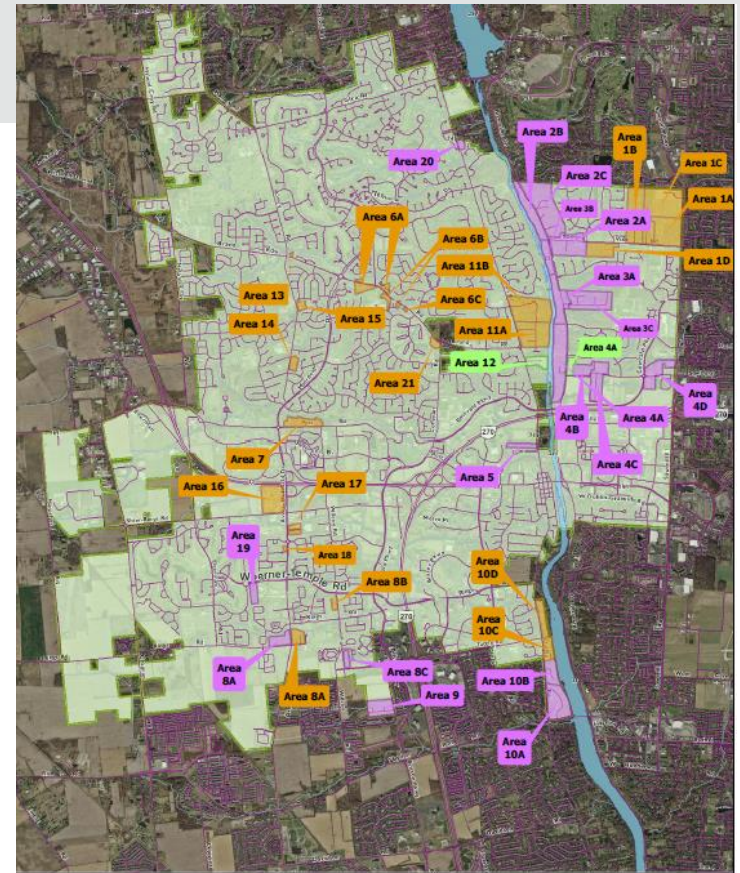


BACKGROUND/HISTORY



UTILITY EXTENSION AREAS

- Current policy adopted by Dublin City Council on December 7, 2015
- Outlines process to identify, prioritize, program and implement design and construction of public utility service extensions
- Existing developed areas that do not have access to municipal sanitary sewers are highlighted in orange and purple
 - This project was moved forward from 2026 into this year for construction.



Water/Sewer Extension Areas
General Location Map
August 3, 2015

IMPLEMENTATION OF UTILITY EXTENSION PROJECTS

- City funds 100% of the design and construction cost of public utility extensions
- Funding provided in the 2020 and 2021 CIP for the design and construction of Area 1C



CONNECTION TO PUBLIC **SANITARY SEWER SYSTEM**

Must I connect to the new Sanitary Sewer?

- Dublin City Code does not require connection to the public sanitary sewer system.
- Franklin County Public Health is responsible for the inspection and permitting of household sewage treatment systems (HSTS) and has the authority under the Ohio Administrative Code to require connection when:
 1. An HSTS is inoperable or malfunctioning and a public sewer system is accessible within 200 feet of the structure
 - or-
 2. An application for a permit to install a new HSTS is submitted to FCPH and a public sewer system is accessible within 200 feet of the structure



A man with a beard, wearing a striped shirt and large headphones, is pointing at a large monitor in a dimly lit office. The monitor displays a dark screen with some faint, illegible text. The man is looking intently at the screen. The background is dark and out of focus, showing some office equipment and a desk lamp.

PROJECT DESCRIPTION



AREA 1C (Glencree Place and Part of Summit View Drive)

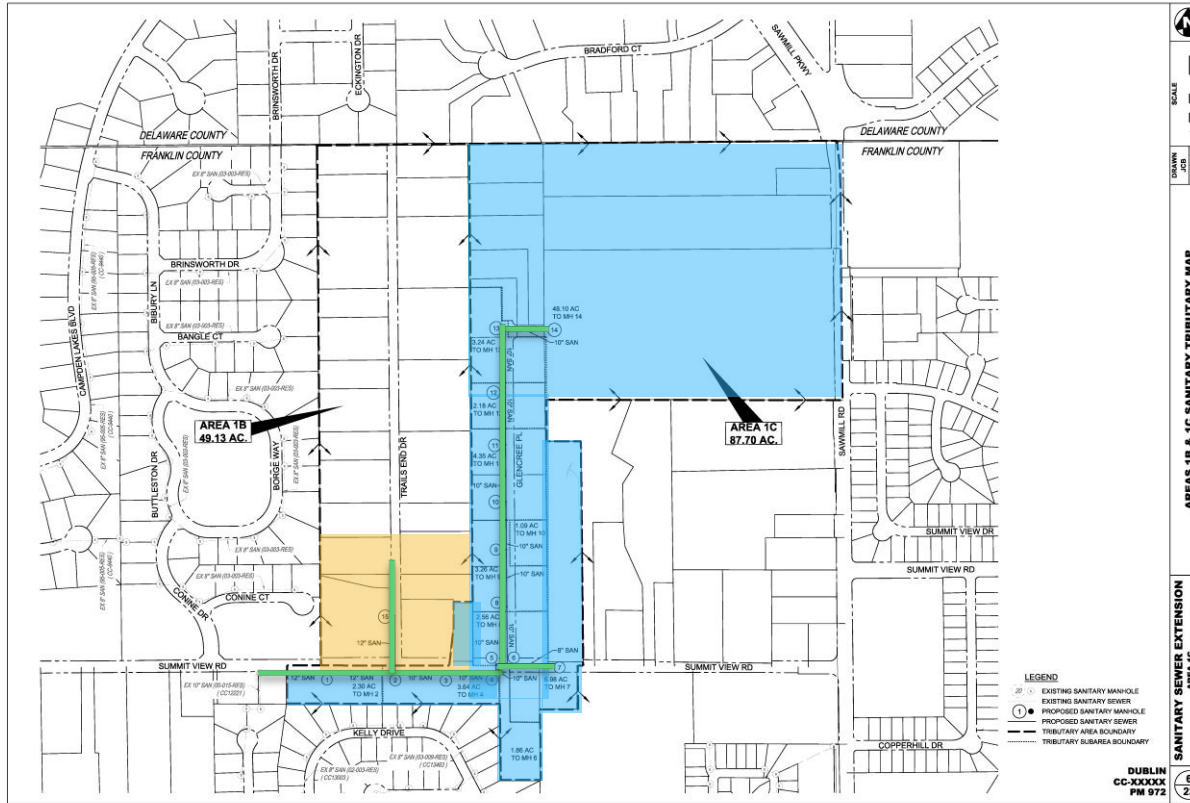
Project Related Work

- Install Sanitary Sewer
- Replace affected Pavement on Summit View Road & Trails End Dr.
- Reconstruct Glencree Place
- ADA Ramps - Glencree Place & Summit View Rd.
- Crosswalk striping & Signs

Area 1C

Part of Area 1B

Sanitary Sewer

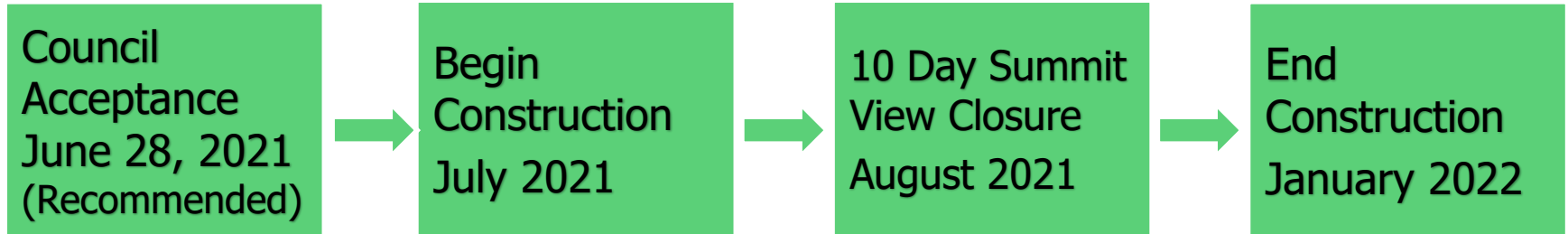




Area 1C (Glencree Place) Project Schedule



ANTICIPATED PROJECT SCHEDULE



*Subject to change





MAINTENANCE OF TRAFFIC SCHEDULE

- **July/August 2021 - Start Project**
 - Work not in roadway, possible short term lane closures on Summit View Road, Trails End Drive and Glencree Place utilizing flaggers. Always maintain access to residences.
- **August/September 2021**
 - Install sanitary sewer from Glencree Place to the water tower – Requires the closure of Summit View Road for up to 10 calendar days. Always maintain access to residences.
 - Detour: Riverside Dr. to Powell Rd. or Hard Rd. to Sawmill Rd.
- **August 2021 to December 2021**
 - Install sanitary sewer on Glencree Place, restore pavement, install ADA ramps, striping, signage, seed and mulch. Always maintain access to residences.



HOW DO I CONNECT?



HOW DO I CONNECT TO PUBLIC **SANITARY SEWER SYSTEM?**

- Obtain Dublin right of way (ROW) Permit Application
- Submit ROW Permit and Plan for review/approval
- Apply and pay for Dublin sewer charges/fees
- Hire contractor to install service line
- Contractor coordinates inspections with Dublin and Franklin County



OWNER RESPONSIBILITY

- Property owners are responsible for all private connection costs
 - Tap fees and capacity charges
 - Private services lines from public utility main lines to their structure
 - Any modifications to existing interior plumbing necessary to connect
- Property owners receive a waiver of **50% off** Dublin's tap fees and capacity charges so long as the connection is made **within a two year timeframe of notification** that the public utility services are available.



CONNECTION COSTS – **SANITARY SEWER**

Typical example for residential sewer service :

Sanitary Sewer Capacity Charges (current)**

<i>Estimate based on .75” water service</i>	Dublin	Columbus	TOTAL
Sanitary Sewer Service	\$2,210	\$3,044	\$5,254
Dublin 50% waiver *	\$1,105	\$3,044	\$4,149

Inspection Fee - \$150

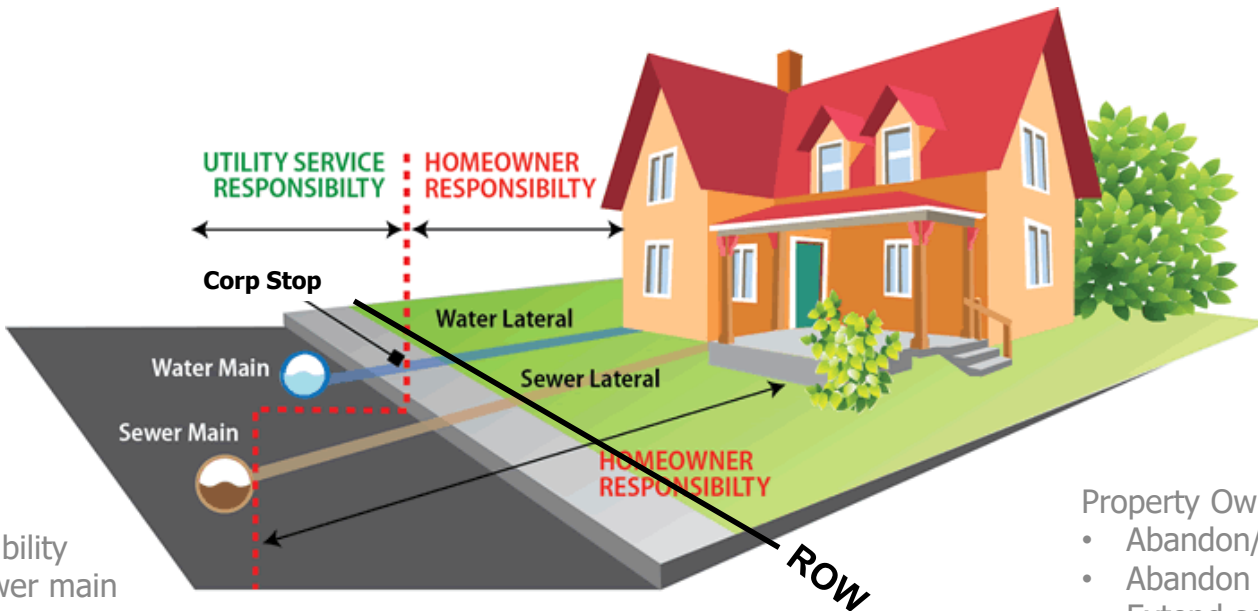
Service construction costs – varies depending on site

* within 2 years timeframe of notification

****Charges subject to change**



TYPICAL SANITARY AND WATER SERVICE



City Responsibility

- Install sewer main
- Install water main
- Extend sewer lateral to ROW/Easement
- Extend water lateral to ROW

Property Owner Responsibility

- Abandon/keep existing well
- Abandon existing HSTS
- Extend sewer lateral from ROW
- Extend water line from ROW
- Renovate interior plumbing



SANITARY SEWER UTILITY EXTENSIONS

Why is this information important to you?

- Safety and health
- Water quality
- Less long term maintenance
- Potentially increased home values
- Opportunity to invest in a permanent solution instead of a temporary system if problems arise in existing systems



WHAT'S NEXT?

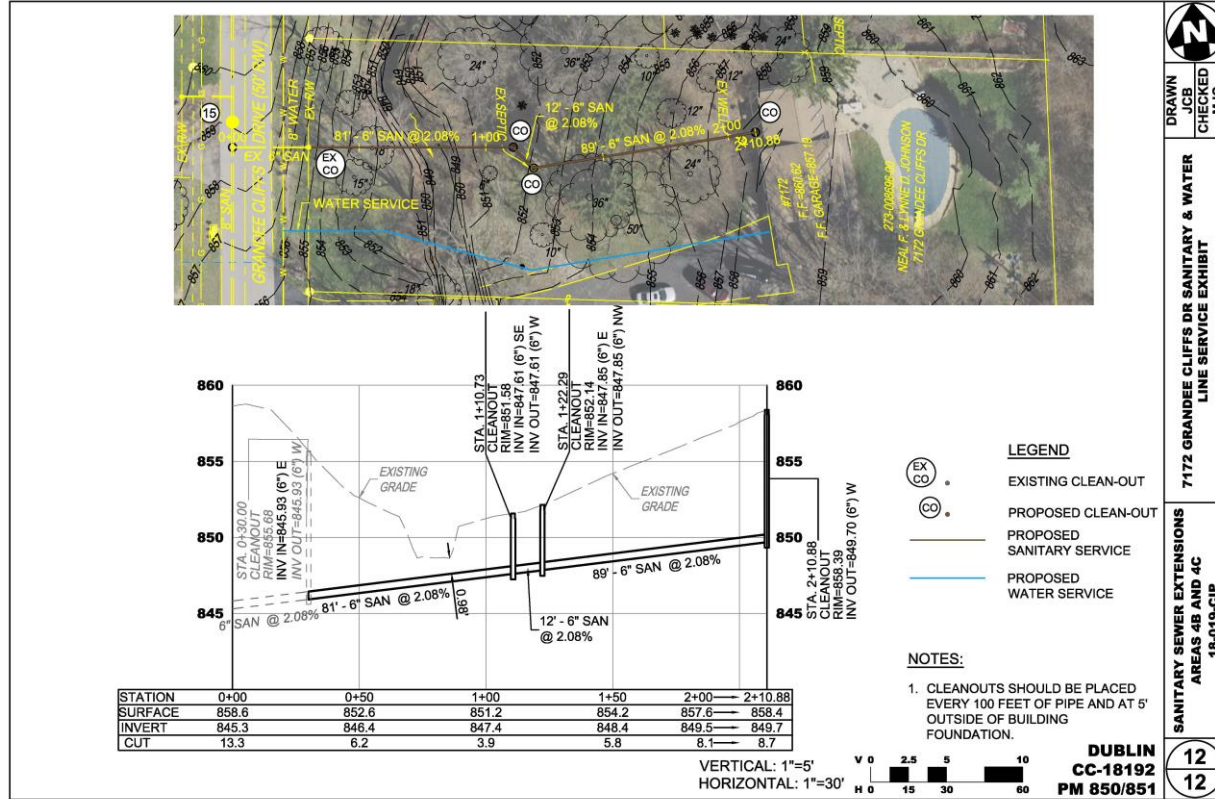
- Watch for updated information on Dublin's website:
 - Full policy, video and presentation, information regarding the sewer tap permit process, map of sanitary sewer extension areas
- Staff will send a potential sanitary service lateral alignment to property owners to show where the sanitary service laterals are planned.



DublinOhioUSA.gov/glencree



EXAMPLE SANITARY SERVICE LATERAL EXHIBIT



Questions?



QUESTIONS OR COMMENTS?

If you have any further questions please contact either:

Brian Gable at [614.410.4641](tel:614.410.4641) or bgable@dublin.oh.us

Ken Richardson at [614.410.4631](tel:614.410.4631) or e-mail krichardson@dublin.oh.us

For updates:

DublinOhioUSA.gov/glencree

Nextdoor.com 

