

HYLAND GLEN PRELIMINARY PLAT

DUBLIN, OHIO

PREPARED FOR:

THE PARAGON BUILDING GROUP, LTD.

DBA VIRGINIA HOMES

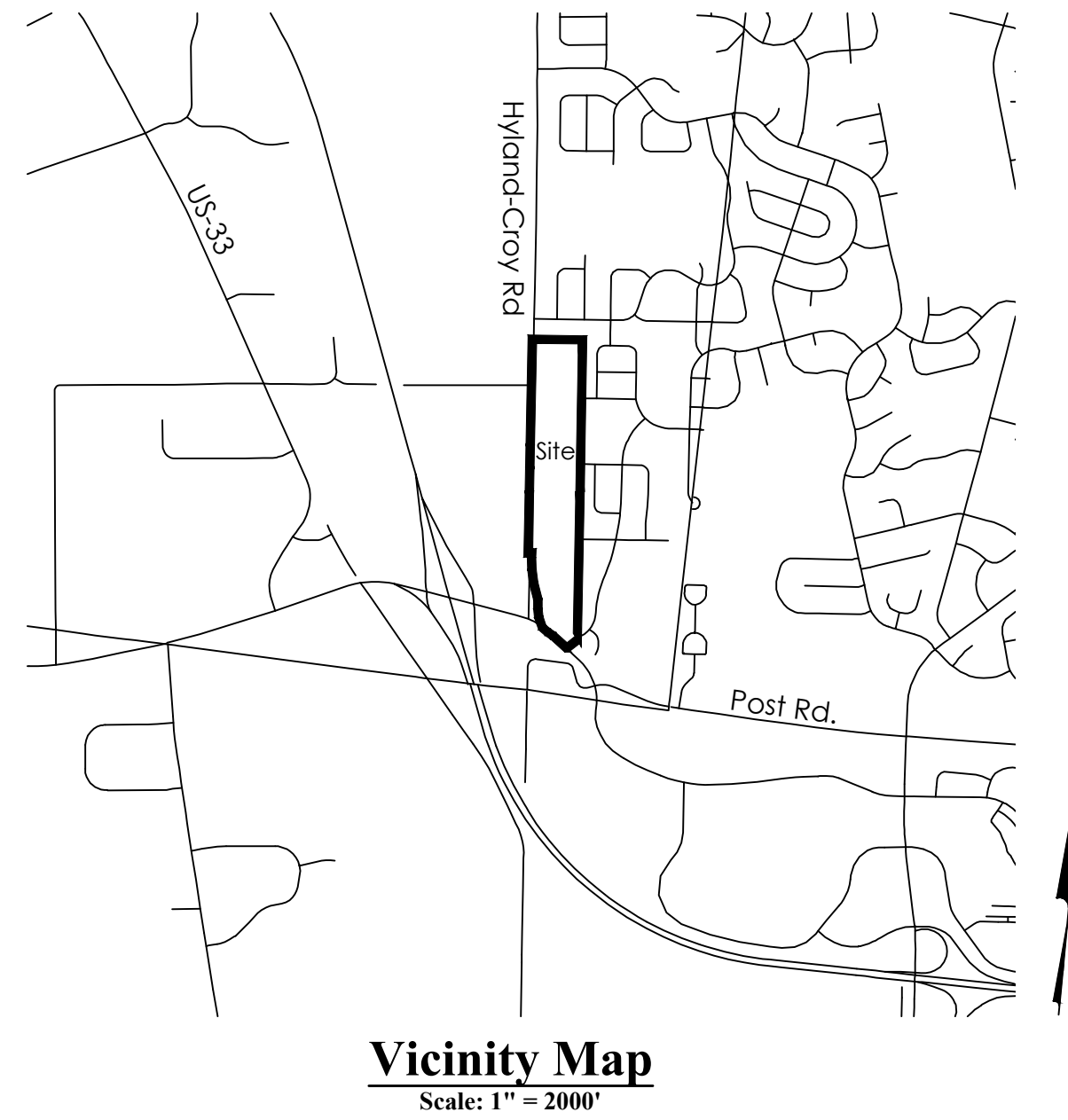
485 METRO PLACE SOUTH

SUITE 350

DUBLIN, OHIO 43017

INDEX OF DRAWINGS

1. COVER
2. VICINITY MAP
- 3 & 4. SITE PLAN
5. TREE PRESERVATION PLAN
6. TREE PRESERVATION DATA TABLE



REVISED :AUGUST 27, 2021

SURVEYOR, CIVIL ENGINEER &
LANDSCAPE ARCHITECT

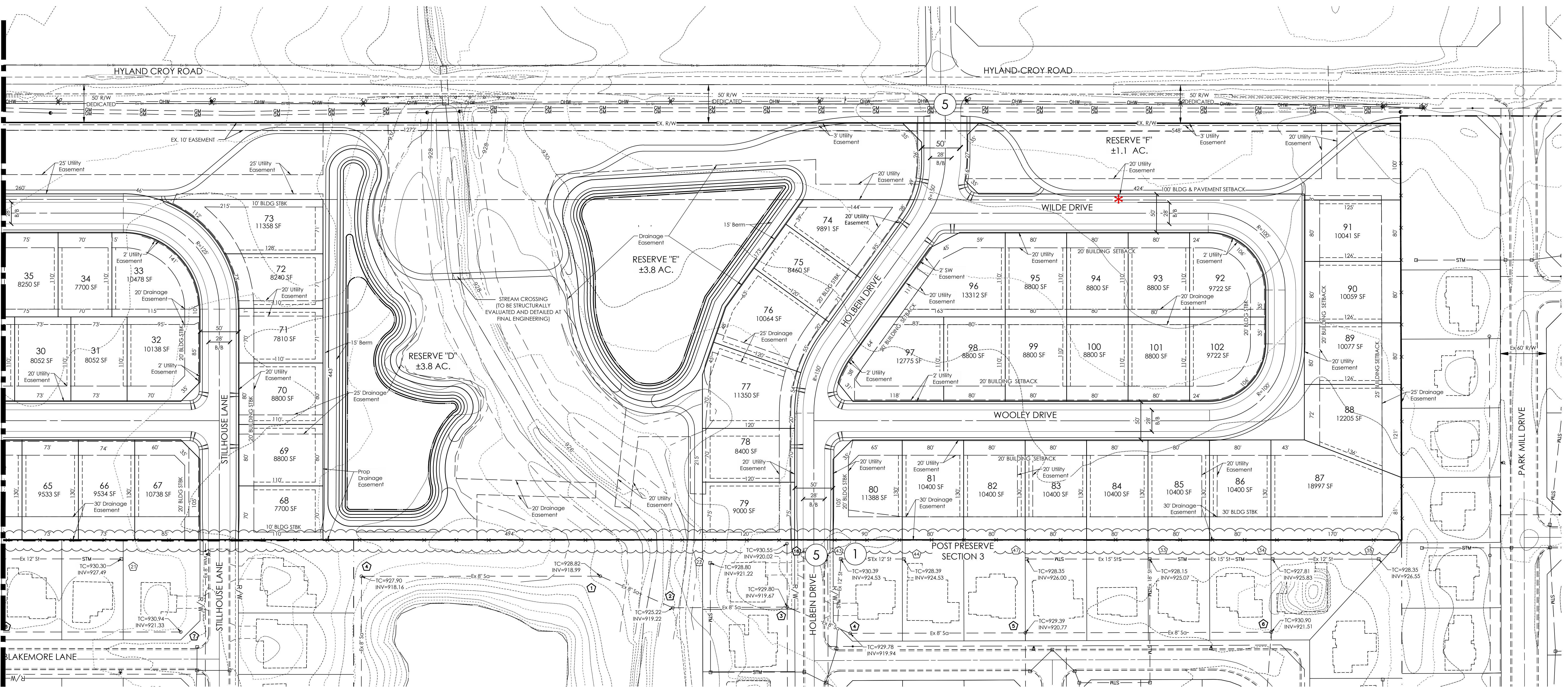


Evans, Mechwart, Hambleton & Tilton, Inc.
Engineers • Surveyors • Planners • Scientists
5500 New Albany Road, Columbus, OH 43054
Phone: 614.775.4500 Toll Free: 888.775.3648

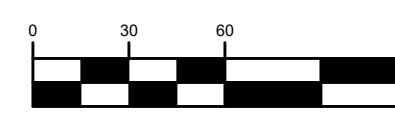
emht.com

SEE SHEET 3/6

MATCH LINE



GRAPHIC SCALE



1 inch = 60 feet

REVISIONS	
DATE	DESCRIPTION
7/26/21	FIRST SUBMITTAL



THE PARAGON BUILDING GROUP LTD.
DBA VIRGINIA HOMES
485 METRO PLACE SOUTH
SUITE 350
DUBLIN, OHIO 43017

CITY OF DUBLIN, FRANKLIN COUNTY, OHIO
PRELIMINARY PLAT
FOR
HYLAND GLEN
SITE PLAN

LOCATED IN:
VIRGINIA MILITARY SURVEY NUMBER 3452
STATE OF OHIO, COUNTY OF UNION, TOWNSHIP OF JEROME

Date	Job No.
AUGUST 27, 2021	20210326
Scale	Sheet
1"=60'	4/6

#	Common Name	Scientific Name	Size (in)	Stems per Tree	Condition	Indicator	Remove Tree	Inches Removed	Inches to Replace
1	Silver Maple	Acer saccharinum	20	1	Good	Deciduous		0	0
2	Sweetgum	Liquidambar styraciflua	23	1	Fair	Deciduous	x	23	23
3	White Pine	Pinus strobus	25	1	Dead	Coniferous	x	25	0
4	White Ash	Fraxinus americana	37	1	Poor	Deciduous	x	37	0
5	White Pine	Pinus strobus	24	1	Fair	Coniferous	x	24	24
6	Blue Spruce	Picea pungens	8	1	Good	Coniferous	x	8	8
7	Red Maple	Acer rubrum	24	1	Fair	Deciduous	x	24	24
8	Sweetgum	Liquidambar styraciflua	19	1	Good	Deciduous	x	19	19
9	Blue Spruce	Picea pungens	18	1	Good	Coniferous	x	18	18
10	Blue Spruce	Picea pungens	20	1	Good	Coniferous	x	20	20
11	Blue Spruce	Picea pungens	16	1	Good	Coniferous	x	16	16
12	Noway Spruce	Picea abies	16	1	Good	Coniferous	x	16	16
13	Blue Spruce	Picea pungens	16	1	Poor	Coniferous	x	16	0
14	Blue Spruce	Picea pungens	16	1	Fair	Coniferous	x	16	16
15	Noway Spruce	Picea abies	10,14	2	Fair	Coniferous		0	0
16	Blue Spruce	Picea pungens	25	1	Good	Coniferous		0	0
17	Noway Spruce	Picea abies	15	1	Fair	Coniferous		0	0
18	White Ash	Fraxinus americana	33	1	Poor	Deciduous		0	0
19	Black Cherry	Prunus serotina	7	1	Fair	Deciduous		0	0
20	Blue Spruce	Picea pungens	12	1	Good	Coniferous	x	12	12
21	Red Maple	Acer rubrum	11	1	Good	Deciduous	x	11	11
22	Red Maple	Acer rubrum	17	1	Fair	Deciduous	x	17	17
23	Blue Spruce	Picea pungens	20	1	Good	Coniferous	x	20	20
24	Blue Spruce	Picea pungens	26	1	Poor	Coniferous		0	0
25	Red Maple	Acer rubrum	34	1	Fair	Deciduous		0	0
26	Blue Spruce	Picea pungens	23	1	Fair	Coniferous		0	0
27	Red Maple	Acer rubrum	22	1	Good	Deciduous		0	0
28	Red Maple	Acer rubrum	28	1	Fair	Deciduous		0	0
29	Black Locust	Robinia pseudoacacia	17	1	Good	Deciduous		0	0
30	Red Maple	Acer rubrum	16	1	Fair	Deciduous		0	0
31	White Ash	Fraxinus americana	12,10,6	3	Dead	Dead	x	28	0
32	Red Maple	Acer rubrum	24	1	Good	Deciduous		0	0
33	Red Maple	Acer rubrum	22	1	Fair	Deciduous		0	0
34	Blue Spruce	Picea pungens	22	1	Dead	Coniferous	x	22	0
35	Blue Spruce	Picea pungens	16	1	Dead	Coniferous	x	16	0
36	Red Maple	Acer rubrum	6	1	Good	Deciduous	x	6	6
37	Red Maple	Acer rubrum	30	1	Fair	Deciduous		0	0
38	Wild Crabapple	Malus coronaria	12	1	Fair	Deciduous		0	0
39	Sweetgum	Liquidambar styraciflua	16	1	Good	Deciduous		0	0
40	White Poplar	Populus alba	14,12	2	Good	Deciduous		0	0
41	Paper Birch	Betula papyrifera	12,10,8	3	Good	Deciduous		0	0
42	Bitternut Hickory	Carya cordiformis	26	1	Good	Deciduous		0	0
43	Noway Spruce	Picea abies	22	1	Fair	Coniferous	x	22	22
44	Blue Spruce	Picea pungens	23	1	Dead	Coniferous	x	23	0
45	Red Maple	Acer rubrum	22	1	Good	Deciduous		0	0
46	Sugar Maple	Acer saccharum	23	1	Fair	Deciduous		0	0
47	Sugar Maple	Acer saccharum	27	1	Fair	Deciduous		0	0
48	Blue Spruce	Picea pungens	15	1	Fair	Coniferous		0	0
49	Noway Spruce	Picea abies	7,7	2	Good	Coniferous		0	0
50	White Pine	Pinus strobus	12	1	Poor	Coniferous		0	0
51	White Pine	Pinus strobus	13	1	Dead	Dead	x	13	0
52	White Pine	Pinus strobus	10,6	2	Poor	Coniferous	x	16	0
53	White Pine	Pinus strobus	15	1	Poor	Coniferous	x	15	0
54	White Pine	Pinus strobus	14	1	Poor	Coniferous	x	14	0
55	Blue Spruce	Picea pungens	7	1	Good	Coniferous	x	7	7
56	Noway Spruce	Picea abies	9	1	Good	Coniferous	x	9	9
57	Blue Spruce	Picea pungens	6	1	Good	Coniferous	x	6	6
58	White Pine	Pinus strobus	17	1	Poor	Coniferous	x	17	0
59	White Pine	Pinus strobus	22	1	Fair	Coniferous	x	22	22
60	Blue Spruce	Picea pungens	9	1	Good	Coniferous	x	9	9
61	White Pine	Pinus strobus	17	1	Fair	Coniferous	x	17	17
62	White Pine	Pinus strobus	20	1	Fair	Coniferous	x	20	20
63	White Pine	Pinus strobus	16	1	Fair	Coniferous	x	16	16
64	Blue Spruce	Picea pungens	15	1	Good	Coniferous	x	15	15
65	Blue Spruce	Picea pungens	6	1	Good	Coniferous	x	6	6
66	Blue Spruce	Picea pungens	14	1	Good	Coniferous	x	14	14
67	White Pine	Pinus strobus	15	1	Good	Coniferous	x	15	15
68	Red Maple	Acer rubrum	19	1	Good	Deciduous	x	19	19
69	Blue Spruce	Picea pungens	9	1	Good	Coniferous	x	9	9
70	Blue Spruce	Picea pungens	10	1	Good	Coniferous	x	10	10
71	Red Maple	Acer rubrum	21	1	Good	Deciduous	x	21	21
72	Blue Spruce	Picea pungens	16	1	Good	Coniferous	x	16	16
73	Blue Spruce	Picea pungens	28	1	Good	Coniferous	x	28	28
74	Noway Spruce	Picea abies	16	1	Fair	Coniferous		0	0
75	Red Maple	Acer rubrum	7	1	Good	Deciduous	x	7	7
76	Red Maple	Acer rubrum	17	1	Fair	Deciduous	x	17	17
77	Sugar Maple	Acer saccharum	20	1	Good	Deciduous		0	0
78	Black Locust	Robinia pseudoacacia	20	1	Poor	Deciduous	x	20	0
79	Blue Spruce	Picea pungens	17	1	Good	Coniferous	x	17	17
80	Noway Spruce	Picea abies	16	1	Fair	Coniferous	x	16	16
81	Blue Spruce	Picea pungens	21	1	Fair	Coniferous		0	0
82	Tulip Tree Magnolia	Magnolia liliiflora	42	1	Fair	Deciduous		0	0
83	Red Maple	Acer rubrum	25	1	Poor	Deciduous		0	0
84	Bitternut Hickory	Carya cordiformis	17	1	Fair	Deciduous	x	17	17

#	Common Name	Scientific Name	Size (in)	Stems per Tree	Condition	Indicator	Remove Tree	Inches Removed	Inches to Replace
85	Red Oak	Quercus rubra	25	1	Good	Deciduous	x	25	25
86	Red Maple	Acer rubrum	33	1	Good	Deciduous		0	0
87	Norway Spruce	Picea abies	34	1	Poor	Coniferous		0	0
88	Virginia Pine	Pinus virginiana	22	1	Fair	Coniferous		0	0
89	Norway Spruce	Picea abies	27	1	Fair	Coniferous		0	0
90	Red Oak	Quercus rubra	35	1	Fair	Deciduous		0	0
91	Sugar Maple	Acer saccharum	18	1	Poor	Deciduous	x	18	0
92	Sugar Maple	Acer saccharum	14,7	2	Poor	Deciduous	x	14,7	0
93	Sugar Maple	Acer saccharum	11,7	2	Fair	Deciduous		0	0
94	Black Locust	Robinia pseudoacacia	25	1	Fair	Deciduous		0	0
95	Silver Maple	Acer saccharinum	9,7,9,13,9,9	6	Poor	Deciduous	x	9,7,9,13,9,9	0
96	Hackberry	Celtis occidentalis	8	1	Good	Deciduous		0	0
97	Hackberry	Celtis occidentalis	8	1	Good	Deciduous		0	0
98	Black Locust	Robinia pseudoacacia	8	1	Good	Deciduous		0	0
99	Hackberry	Celtis occidentalis	8,6	2	Good	Deciduous		0	0
100	Hackberry	Celtis occidentalis	6,6	2	Good	Deciduous		0	0
101	Hackberry	Celtis occidentalis	11	1	Good	Deciduous		0	0
102	Black Locust	Robinia pseudoacacia	15	1	Poor	Deciduous		0	0
103	Black Locust	Robinia pseudoacacia	10,10	2	Fair	Deciduous		0	0
104	Black Locust	Robinia pseudoacacia	14	1	Fair	Deciduous		0	0
105	Red Mulberry	Morus rubra	9	1	Fair	Deciduous		0	0
106	Black Locust	Robinia pseudoacacia	8	1	Good	Deciduous		0	0
107	Black Locust	Robinia pseudoacacia	22	1	Fair	Deciduous		0	0
108	Black Cherry	Prunus serotina	10	1	Poor	Deciduous		0	0
109	Black Locust	Robinia pseudoacacia	20	1	Fair	Deciduous		0	0
110	Bitternut Hickory	Carya cordiformis	13	1	Poor	Deciduous		0	0
111	Black Locust	Robinia pseudoacacia	15	1	Fair	Deciduous		0	0
112	Black Locust	Robinia pseudoacacia	12	1	Fair	Deciduous		0	0
113	Black Locust	Robinia pseudoacacia	23	1	Fair	Deciduous		0	0
114	Black Locust	Robinia pseudoacacia	13,13,10	3	Poor	Deciduous		0	0
115	Bitternut Hickory	Carya cordiformis	8	1	Good	Deciduous		0	0
116	Bitternut Hickory	Carya cordiformis	6	1	Good	Deciduous		0	0
117	Red Oak	Quercus rubra	13	1	Good	Deciduous		0	0
118	Red Maple	Acer rubrum	7	1	Good	Deciduous		0	0
119	Hackberry	Celtis occidentalis	14	1	Good	Deciduous		0	0
120	Red Maple	Acer rubrum	20	1	Good	Deciduous		0	0
121	Black Cherry	Prunus serotina	11	1	Poor	Deciduous		0	0
122	Black Cherry	Prunus serotina	8	1	Fair	Deciduous		0	0
123	Black Cherry	Prunus serotina	9	1	Good	Deciduous		0	0
124	Black Cherry	Prunus serotina	8	1	Fair	Deciduous		0	0
125	Hackberry	Celtis occidentalis	17,9,9,9	4	Good	Deciduous		0	0
126	Black Cherry	Prunus serotina	7	1	Fair	Deciduous		0	0
127	Black Cherry	Prunus serotina	6	1	Fair	Deciduous		0	0
128	Black Cherry	Prunus serotina	9	1	Fair	Deciduous		0	0
129	Hackberry	Celtis occidentalis	16	1	Good	Deciduous		0	0
130	Hackberry	Celtis occidentalis	6	1	Good	Deciduous		0	0
131	Wild Crabapple	Malus coronaria	8	1	Fair	Deciduous		0	0
132	Black Cherry	Prunus serotina	8	1	Poor	Deciduous		0	0
133	Black Cherry	Prunus serotina	9	1	Fair	Deciduous		0	0
134	Red Mulberry	Morus rubra	6,6	2	Poor	Deciduous	x	12	0
135	Black Cherry	Prunus serotina	8	1	Fair	Deciduous	x	8	8
136	Black Cherry	Prunus serotina	13	1	Poor	Deciduous	x	13	0
137	Black Cherry	Prunus serotina	12,6	2	Fair	Deciduous	x	18	18
138	Bitternut Hickory	Carya cordiformis	12,12,8,6	4	Good	Deciduous	x	38	38
139	Black Walnut	Juglans nigra	6	1	Good	Deciduous		0	0
140	Hackberry	Celtis occidentalis	12	1	Good	Deciduous		0	0
141	Black Walnut	Juglans nigra	17	1	Good	Deciduous		0	0
142	Hackberry	Celtis occidentalis	26	1	Good	Deciduous		0	0
143	Black Locust	Robinia pseudoacacia	13	1	Poor	Deciduous		0	0
144	Red Mulberry	Morus rubra	11	1	Dead	Dead	x	11	0
145	Black Locust	Robinia pseudoacacia	8	1	Dead	Dead	x	8	0
146	Black Locust	Robinia pseudoacacia	7	1	Dead	Dead	x	7	0
147	Black Cherry	Prunus serotina	7	1	Fair	Deciduous		0	0
148	Black Cherry	Prunus serotina	10	1	Fair	Deciduous		0	0
149	Red Mulberry	Morus rubra	18	1	Fair	Deciduous		0	0
150	Hackberry	Celtis occidentalis	12	1	Fair	Deciduous		0	0
151	Hackberry	Celtis occidentalis	8	1	Fair	Deciduous		0	0
152	Black Cherry	Prunus serotina	8	1	Poor	Deciduous		0	0
153	Red Mulberry	Morus rubra	7	1	Fair	Deciduous	x	7	7
154	Black Cherry	Prunus serotina	7	1	Poor	Deciduous	x	7	0
155	Hackberry	Celtis occidentalis	13	1	Good	Deciduous		0	0
156	Wild Crabapple	Malus coronaria	6	1	Poor	Deciduous		0	0
157	Hackberry	Celtis occidentalis	6	1	Good	Deciduous		0	0
158	Black Cherry	Prunus serotina	6	1	Good	Deciduous		0	0
159	Red Mulberry	Morus rubra	37,19,13,10	4	Poor	Deciduous		0	0
160	Red Mulberry	Morus rubra	8,8,8	3	Fair	Deciduous		0	0
161	Red Mulberry	Morus rubra	9	1	Poor	Deciduous		0	0
162	Hackberry	Celtis occidentalis	8,7	2	Poor	Deciduous		0	0
163	Red Mulberry	Morus rubra	8,8,8,6	4	Poor	Deciduous		0	0
164	White Ash	Fraxinus americana	28	1	Dead	Dead	x	0	0

TREE CHART