

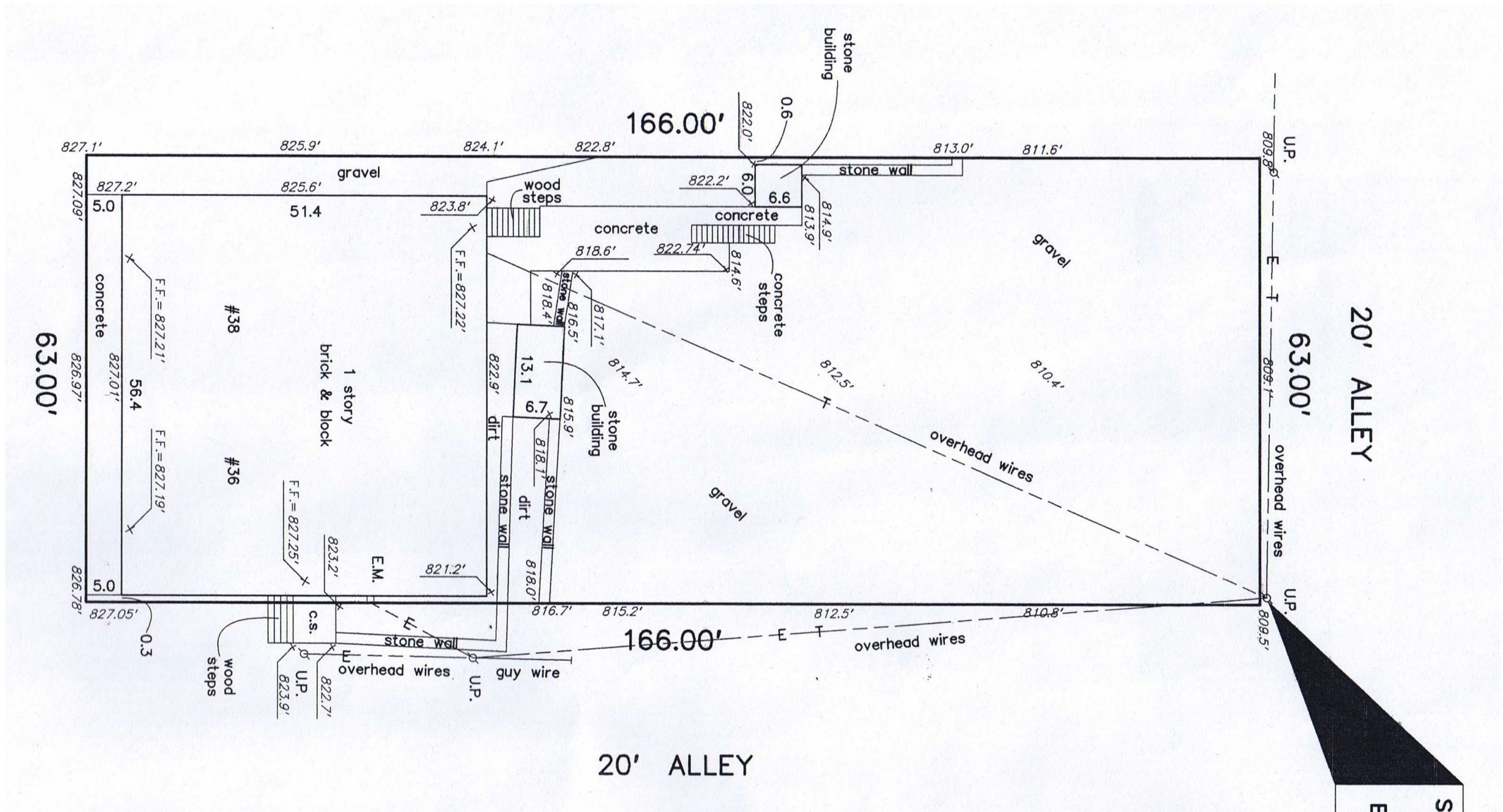


**36-38 N HIGH STREET
INFORMAL REVIEW
9.9.2021**
© Tim Lai ArchitecT

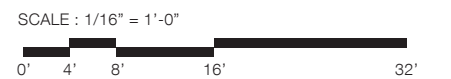


Vicinity Plan





Existing Condition Plan



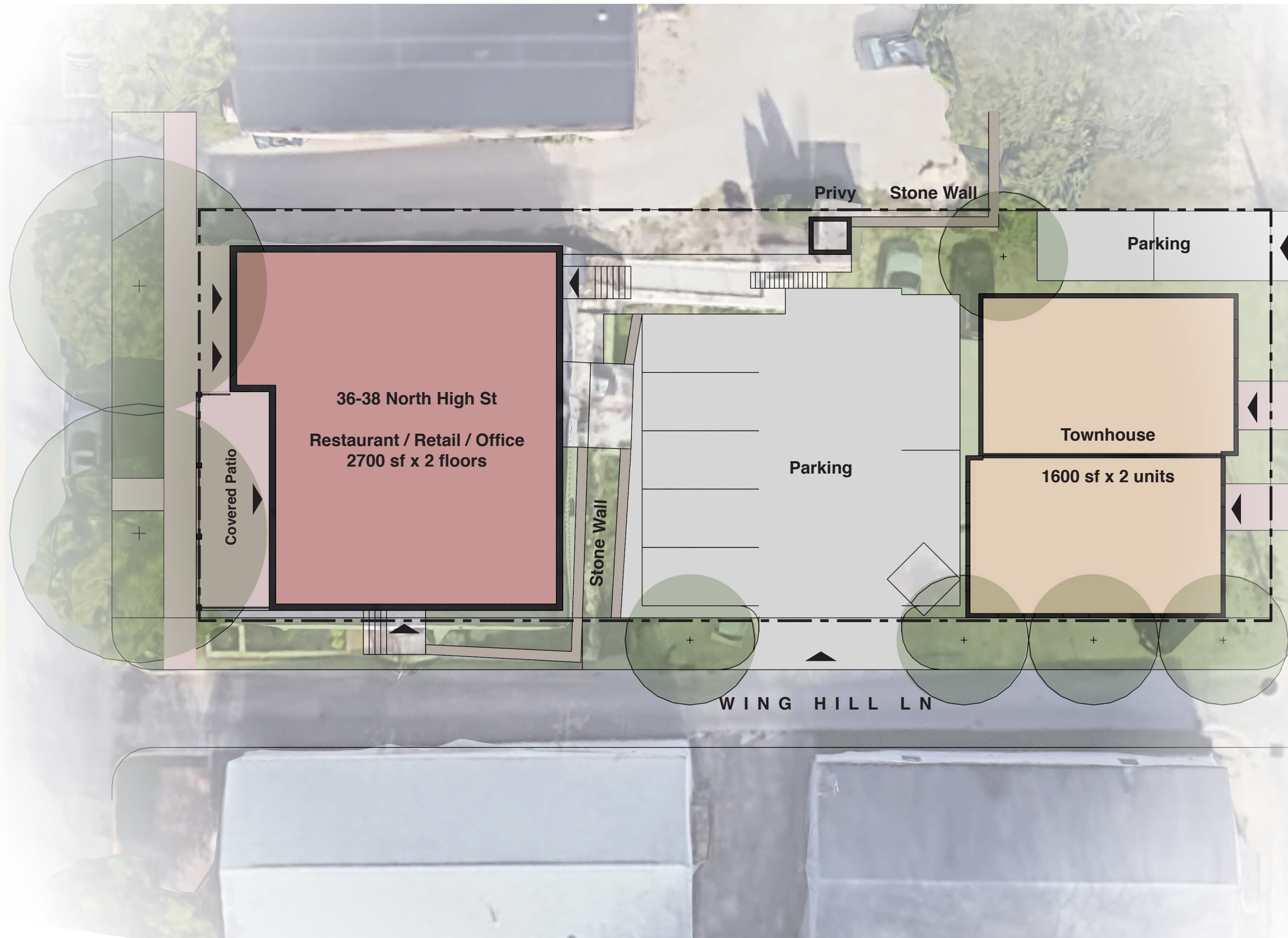


Existing Condition

NORTH HIGH ST

BLACK SMITH LN

WING HILL LN



36-38 North High St
 Restaurant / Retail / Office
 2700 sf x 2 floors

Covered Patio

Stone Wall

Parking

Privy Stone Wall

Parking

Townhouse

1600 sf x 2 units

Site Plan

SCALE: 1/16" = 1'-0"







Northwest Corner



Southwest Corner



West facade



Site section along Wing Hill Ln



Southeast corner on Black Smith & Wing Hill Ln

Northeast corner on Black Smith Ln

