

Double-faced Monument Sign

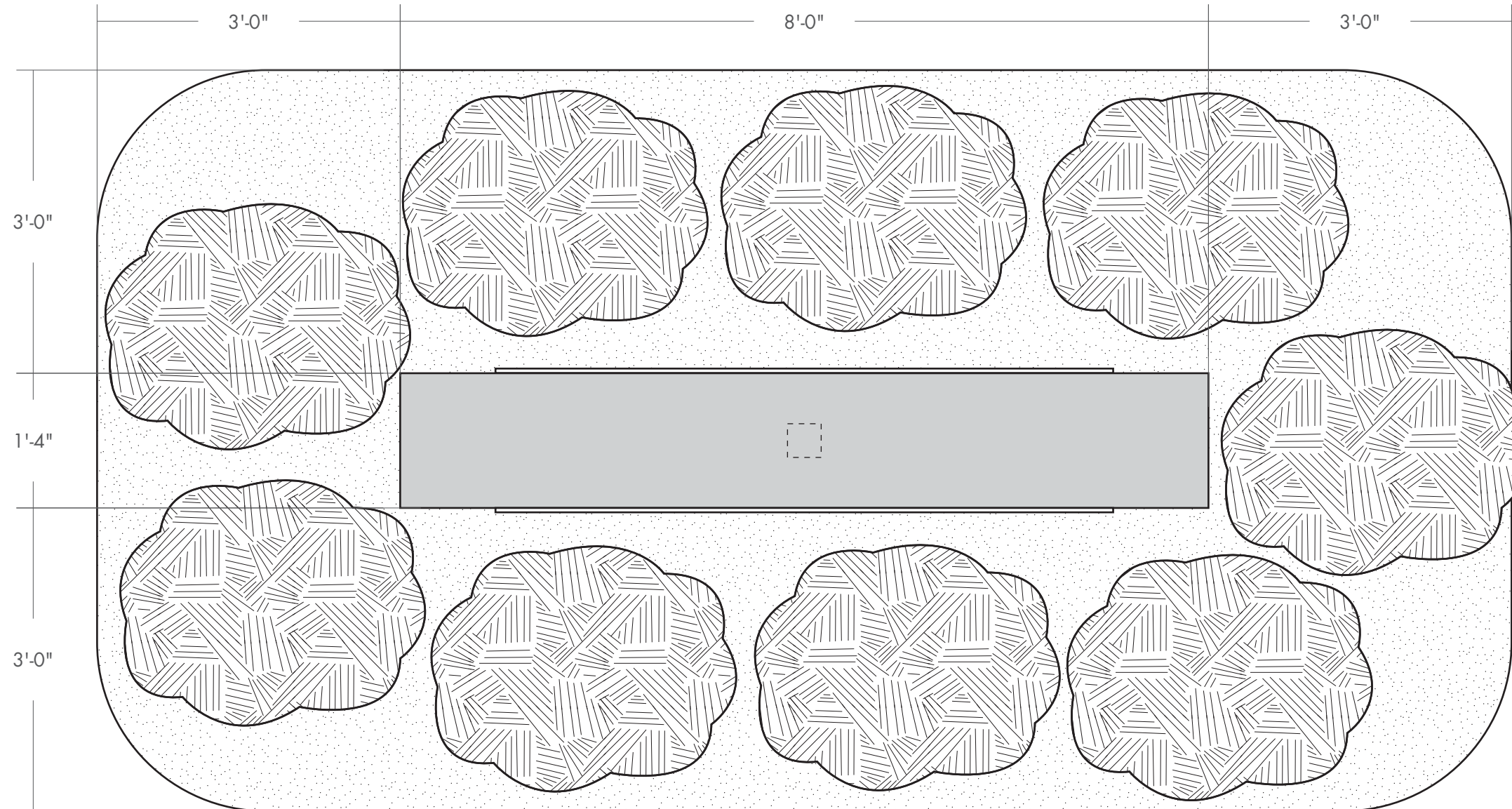
Aluminum cabinet painted white. Limestone-wrapped aluminum cabinet base mounted to a 28"x112" slab, 3" above grade. Logos on sign faces are acrylic, pushed-through 1/2". Push-thru acrylic has opaque black faces- halo glow only. 1/2" acrylic address letters painted white & stud mounted to base.

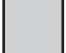




Night View:



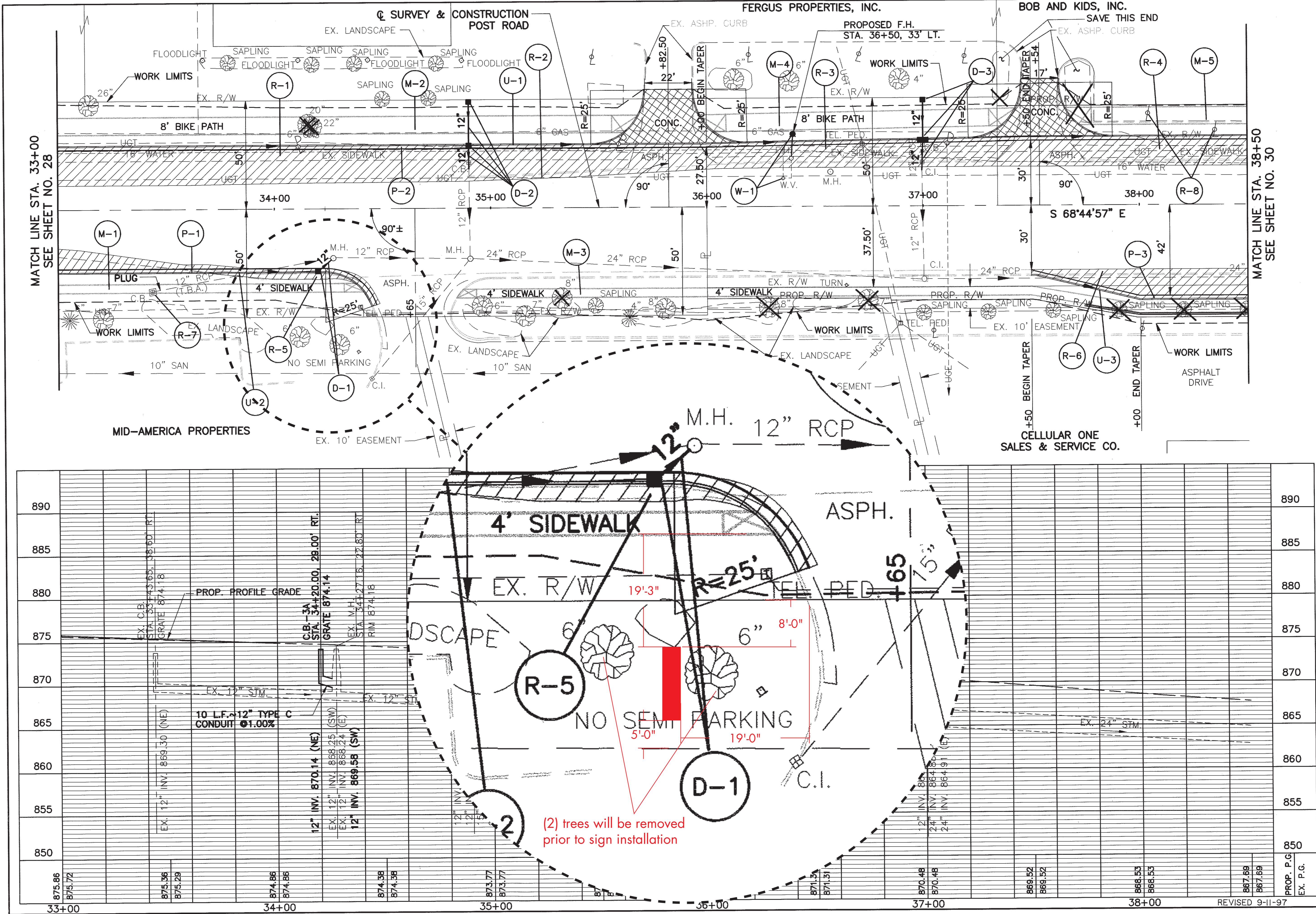
Landscape Plan



-  Proposed sign
-  Evergreen shrubs around all sides of sign
-  Landscaped sign area



PLAN HOLD CORPORATION • IRVINE, CALIFORNIA
 REORDER BY NUMBER 0748
 MICROFILMED
 PLAN HOLD CORPORATION • IRVINE, CALIFORNIA
 REORDER BY NUMBER 0748
 Old Index No. Page 29 of 144
 PLAN HOLD CORPORATION • IRVINE, CALIFORNIA
 REORDER BY NUMBER 0748
 PLAN HOLD CORPORATION • IRVINE, CALIFORNIA
 REORDER BY NUMBER 0748
 REVISED 9-11-97



PLAN & PROFILE - POST ROAD
 STA. 33+00 TO STA. 38+50
 DUBLIN
 29
 144

SCALE IN FEET
 0 20 40
 CALC. D.T. DATE 6/96
 CHD. A.A.H. DATE 2/97