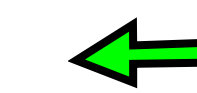


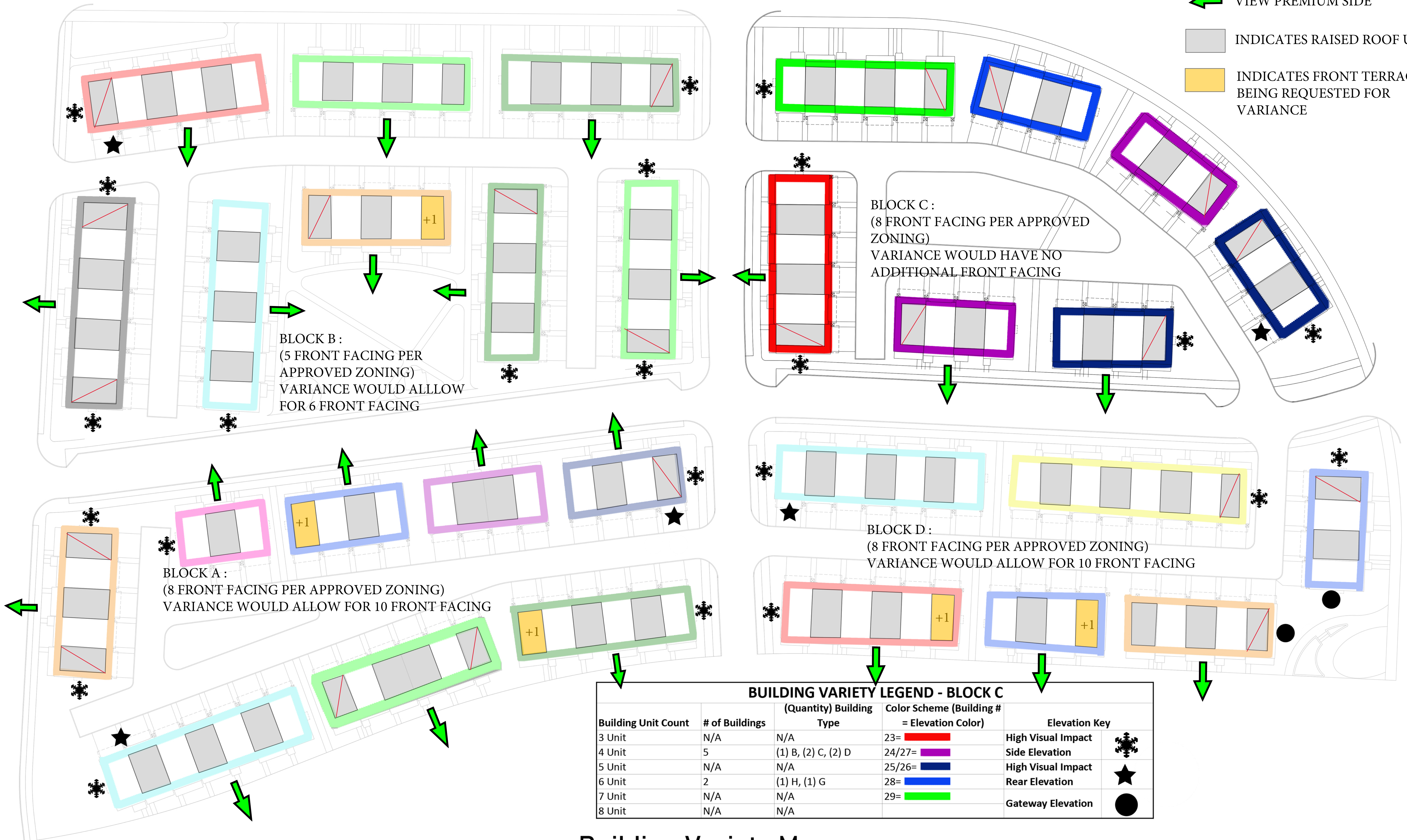










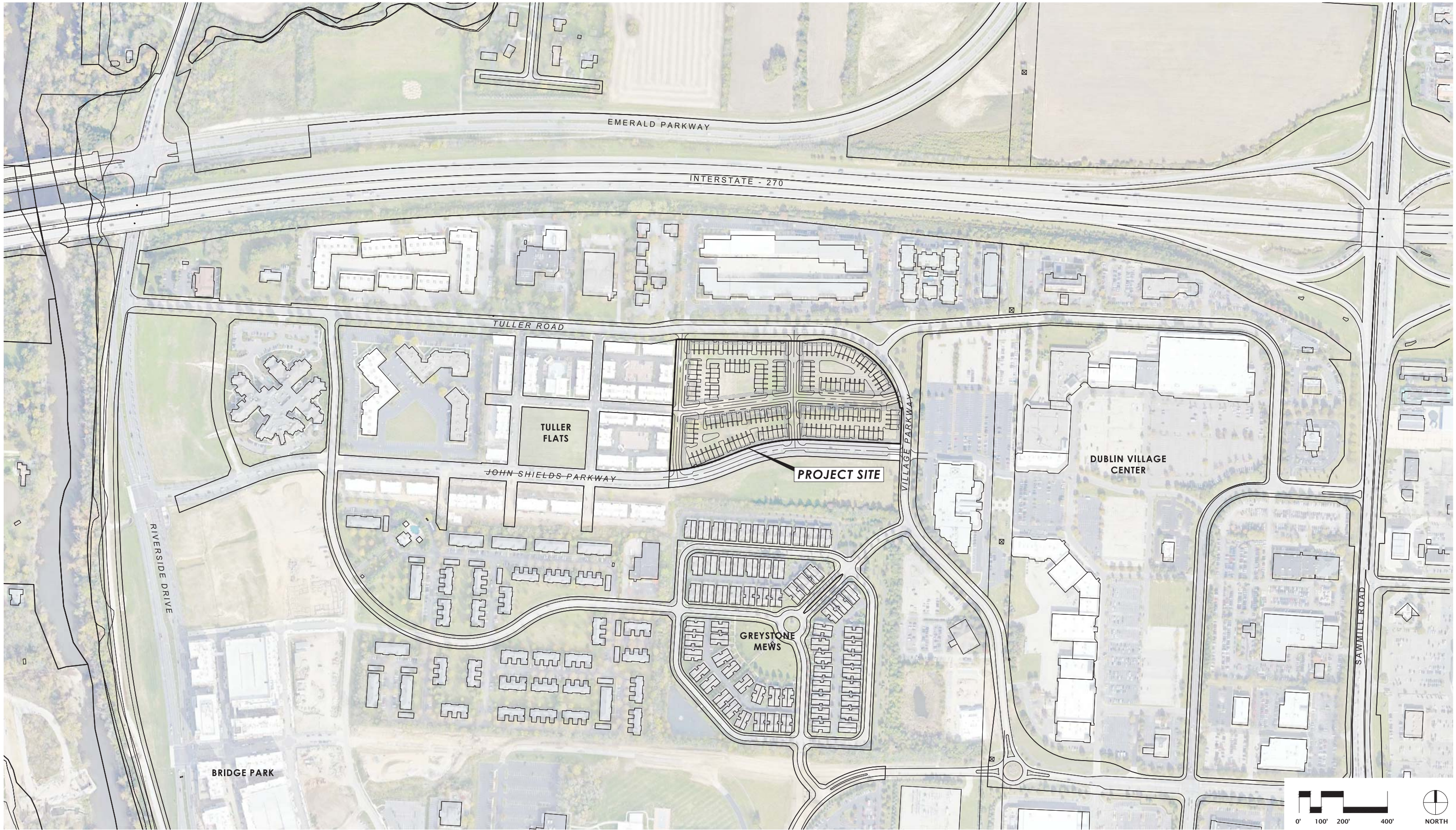
-  VIEW PREMIUM SIDE
-  INDICATES RAISED ROOF UNIT
-  INDICATES FRONT TERRACE BEING REQUESTED FOR VARIANCE



**BUILDING VARIETY LEGEND - BLOCK C**

Building Unit Count	# of Buildings	(Quantity) Building Type	Color Scheme (Building # = Elevation Color)	Elevation Key
3 Unit	N/A	N/A	23= 	High Visual Impact Side Elevation 
4 Unit	5	(1) B, (2) C, (2) D	24/27= 	High Visual Impact Rear Elevation 
5 Unit	N/A	N/A	25/26= 	Gateway Elevation 
6 Unit	2	(1) H, (1) G	28= 	
7 Unit	N/A	N/A	29= 	
8 Unit	N/A	N/A		

**Building Variety Map**



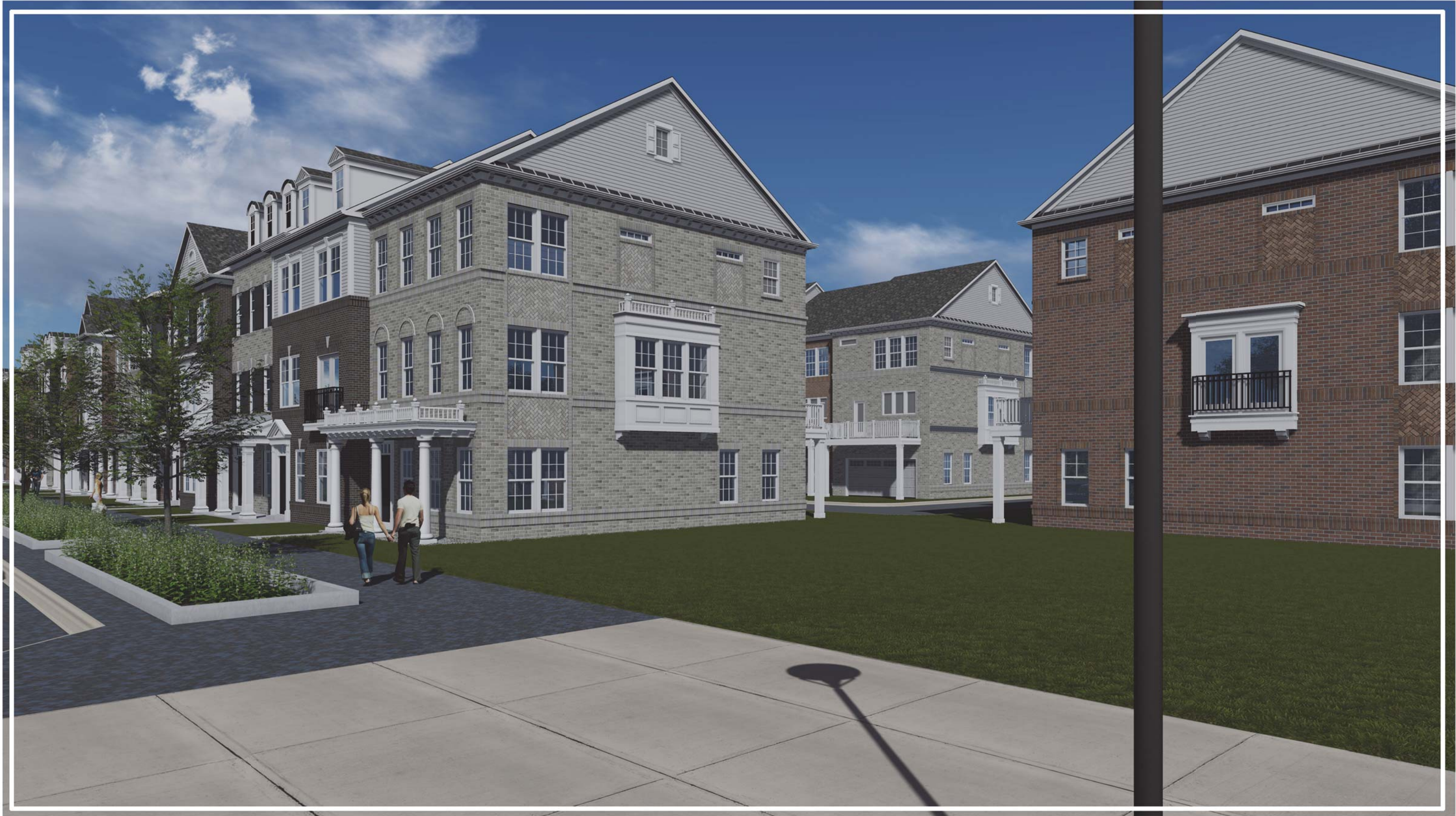
NOTE: The regional aerial has been included to show current road network and development that has not been updated on County GIS maps.

### TULLER ROAD TOWNHOME DEVELOPMENT

EXHIBIT B - REGIONAL CONTEXT MAP

BSD, Dublin, OH

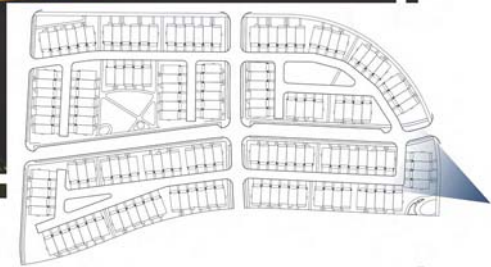
October 1, 2020



## Community Renderings



## Community Renderings



Key Plan



Key Plan



# Community Renderings



## Community Renderings





**DATE:** October 18th, 2021  
**TO:** City Of Dublin  
**FROM:** Pulte Group LLC  
**SUBJECT: Towns On the Parkway – Roof Terraces Variance**

---

---

To whom it may concern,

We are requesting a variance to the previously approved Development Text stating stipulations prohibiting front roof terraces within the end units. After evaluation of the prominent views of the site in addition to changes implicated by the planning and zoning board in the final review process, we are looking to add five additional front terraces for the entire community. Block A would gain 2, Block B would gain 1, Block C would remain unchanged, and Block D would gain 2.

None of the requested end unit front terraces would fall within a gateway or high impact views and are only being requested along the desired viewpoints of the site. Please refer to the building variety map to show locations of end terrace requests.

Thank You,

Adam Pychewicz  
Sr. Project Manager