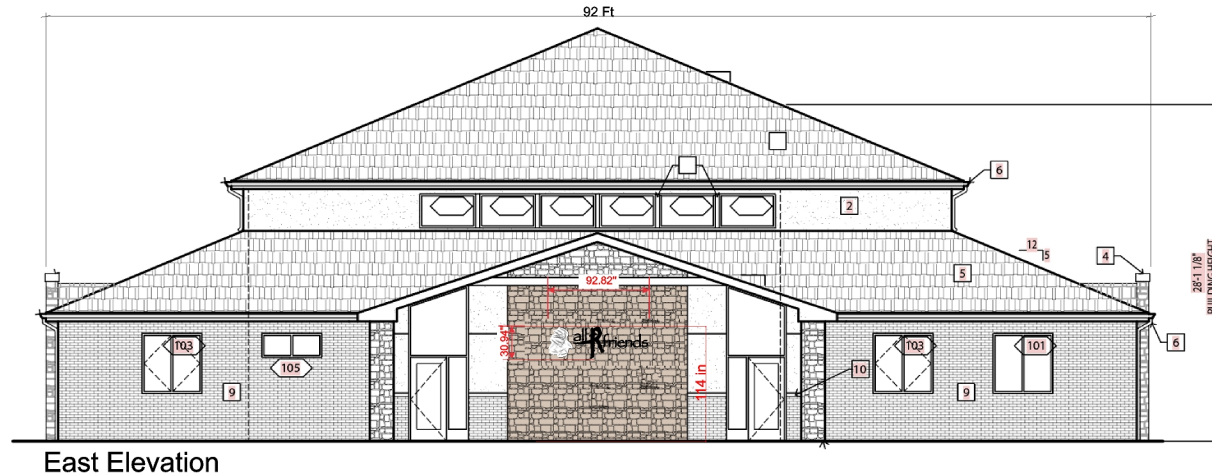


SPECIFICATIONS SHEET

92.82" x 30.94" Non-Illuminated 1/2" Acrylic Logo and Letters

PID: 273-012214

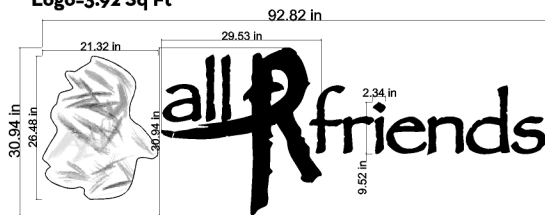
Artwork / Example



East Elevation

SCALE: .25" = 4'

19.94 Overall Sq Ft
Logo=3.92 Sq Ft



"R" w=29.53" / h=30.94"

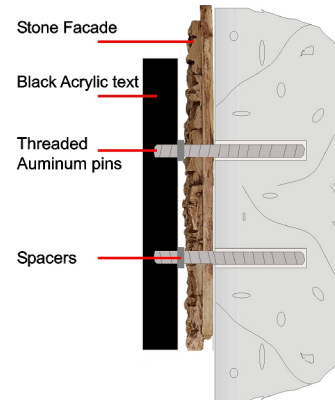
"i" w= 2.34" / h=9.52"

Crayon Scribble w=21.32" / h= 26.84" (3.97 Sq Ft)

Overall Size= 30.94" x 92.82" (19.94 Sq Ft)

East elevation - 1/2" flat cut acrylic

Stud mounted with spacers



Size:

92.82"x30.94" (19.94 sq ft)

Quantity: 1

Material:

1/2" acrylic

Mounting:

Stud mounted to stone surface of building, using spacers to create even plane for sign letters over stone.

Per COSA Standards - A minimum of one connector per ten SF, but not less than four shall be used for each sign or sign component. For individual wall letters, a minimum of two connectors shall be used for each letter. 114" above grade to top of signage

ROW:530 Ft

COLORS:

2025 Black & SW- 2429
Palais White

Copyright 2021: Signaffects, Limited

Email: admin@signaffects.com

Ph#: 614.869.4000



10079 Smith-Calhoun Rd

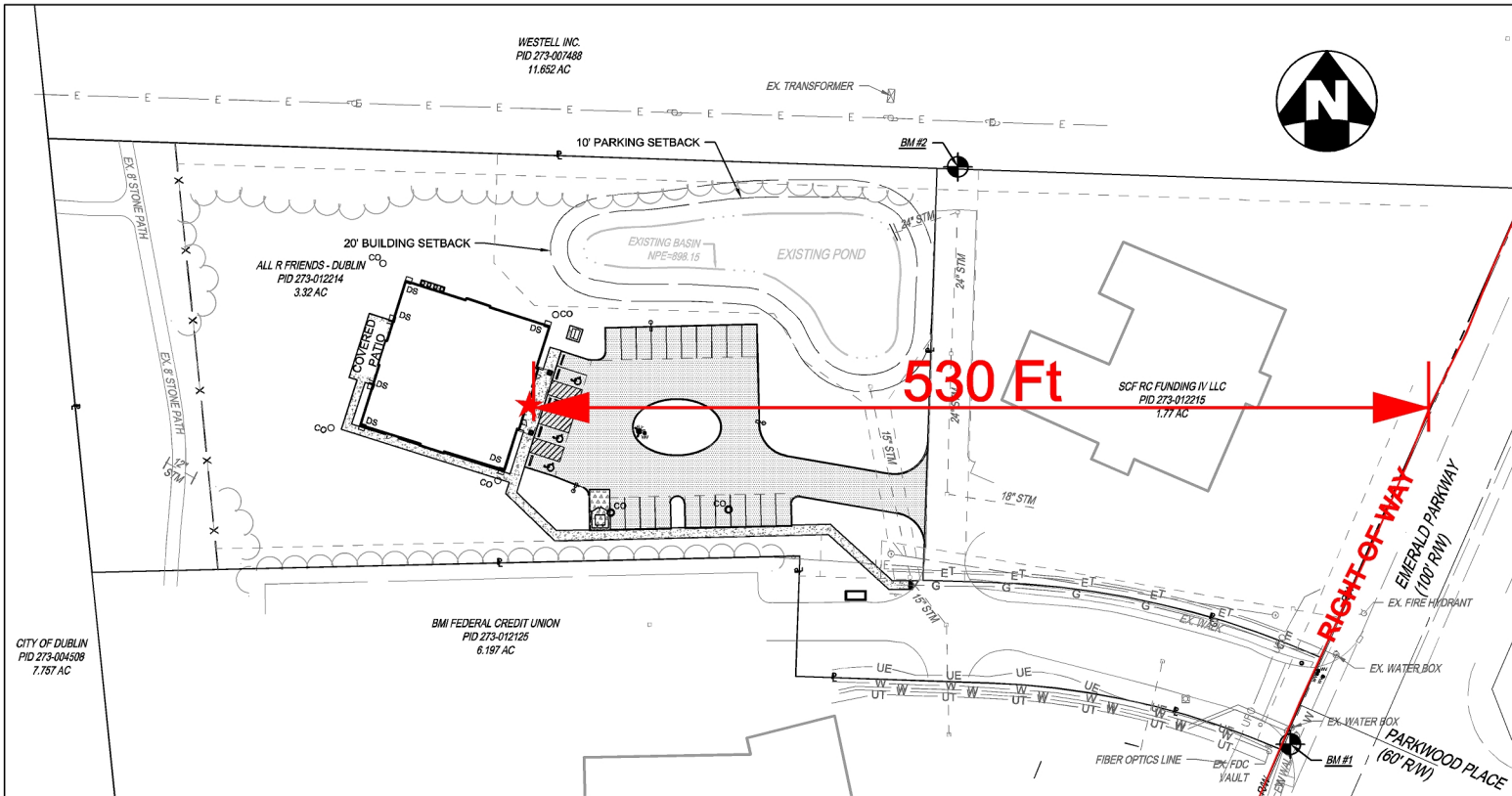
Plain City, OH 43064

www.SignAffects.com

SPECIFICATIONS SHEET

93" x 31" Flush Stud Mount 1/2" Acrylic Logo and Letters

PID: 273-012214



0' 25' 50' 100'
 SCALE: .25" = 25'

Size:
 93"x31" (20 sq ft)

Quantity: 1

Material:
 1/2" acrylic

Mounting:
 Flush stud mount method.
 Per COSA Standards - A minimum of one connector per ten SF, but not less than four shall be used for each sign or sign component. For individual wall letters, a minimum of two connectors shall be used for each letter.

ROW: 530 Ft

COLORS:
 Black & White

Copyright 2021: Signaffects, Limited
 Email: admin@signaffects.com
 Ph#: 614.869.4000



10079 Smith-Calhoun Rd
 Plain City, OH 43064
 www.SignAffects.com