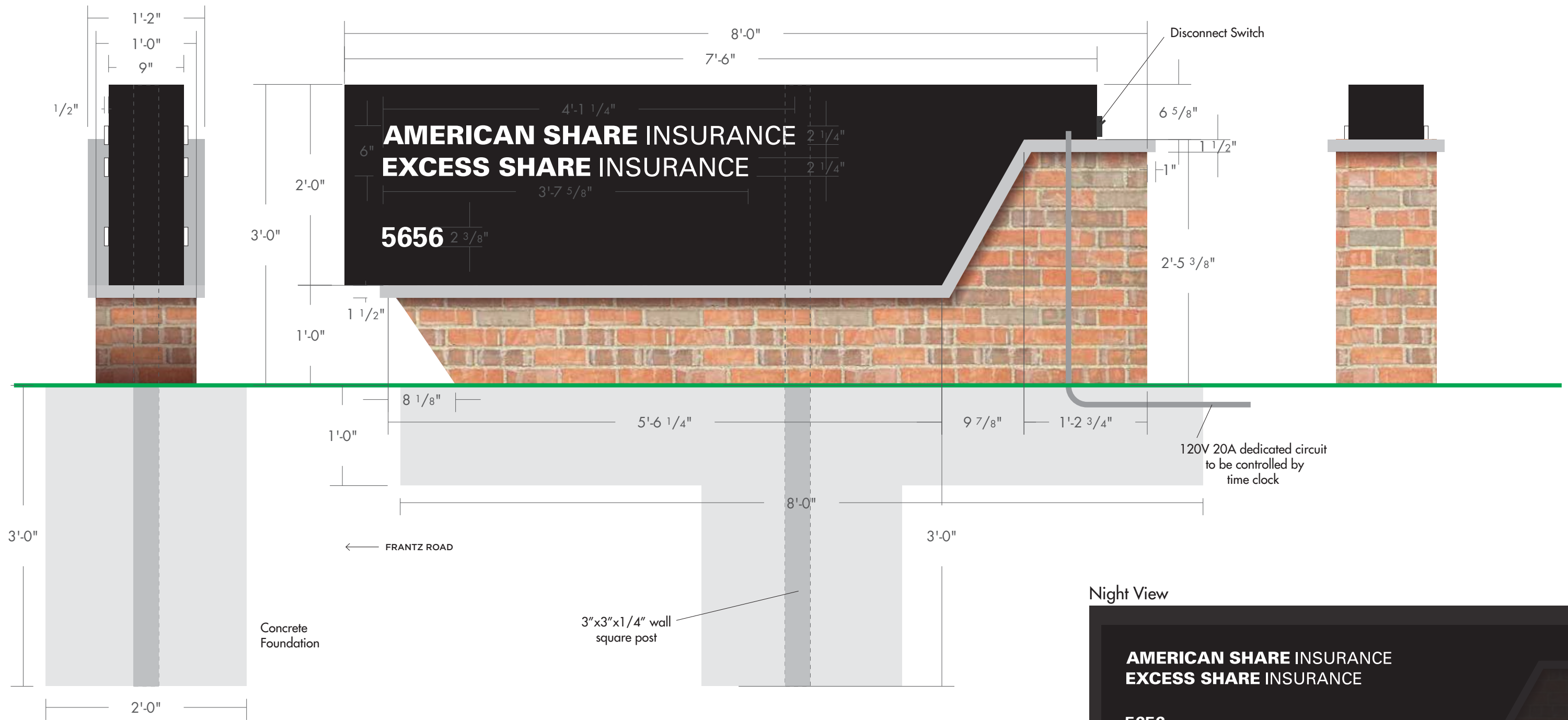
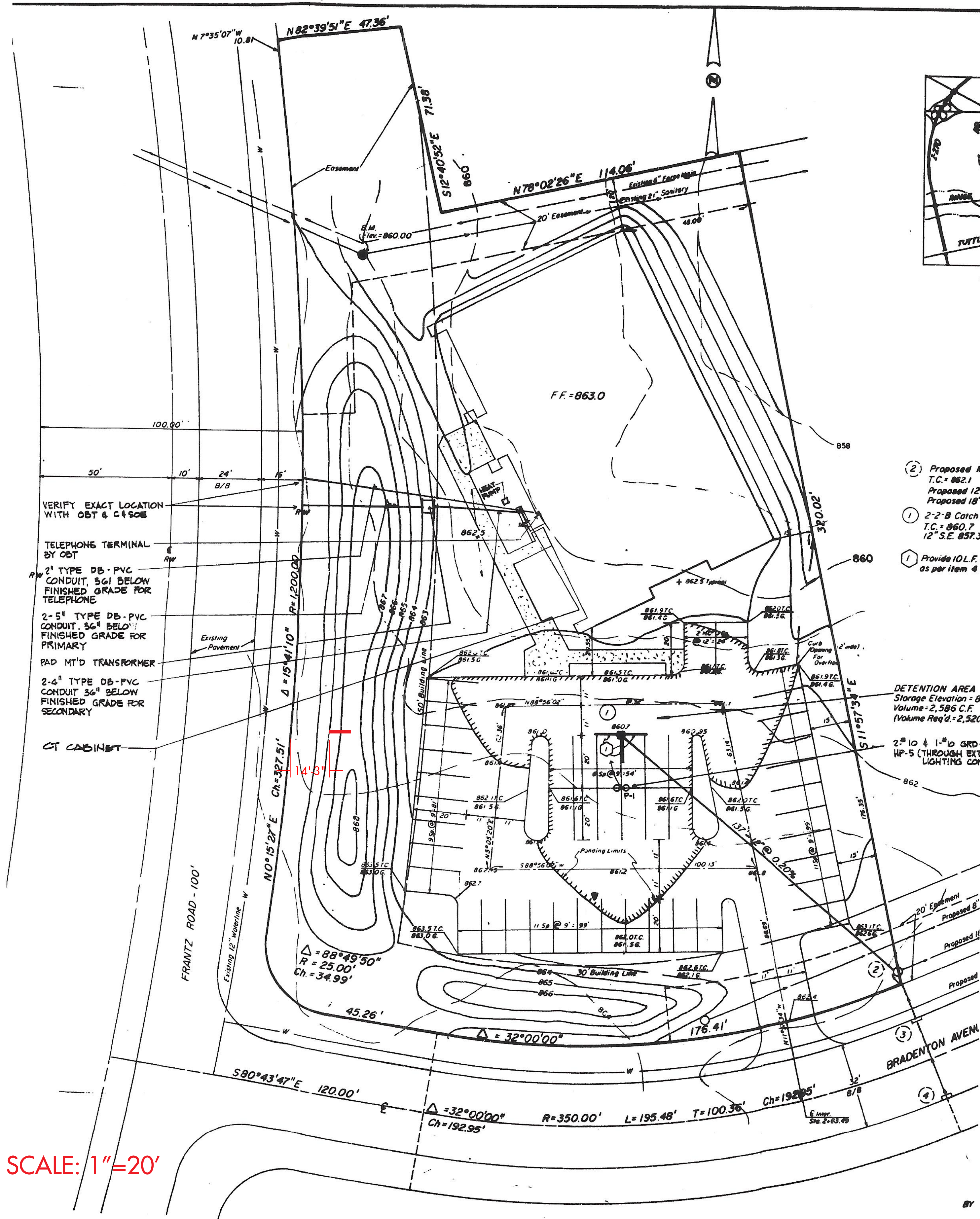


New aluminum sign cabinet mounted on new brick sign base w limestone cap. Internally illuminated with white light.
 Sign face is opaque, graphics are 3/4" push-thru acrylic letters with translucent white faces.





VERIFY EXACT LOCATION WITH OBT & C&S/OE

TELEPHONE TERMINAL BY OBT

2" TYPE DB-PVC CONDUIT, 36" BELOW FINISHED GRADE FOR TELEPHONE

2-5" TYPE DB-PVC CONDUIT, 36" BELOW FINISHED GRADE FOR PRIMARY

PAD MTD TRANSFORMER

2-4" TYPE DB-PVC CONDUIT 36" BELOW FINISHED GRADE FOR SECONDARY

CT CABINET

- ② Proposed M.T.C. = 862.1
Proposed 12"
Proposed 18"
- ① 2-2-B Catch L.T.C. = 860.7
12" S.E. 857.3
- ① Provide 10 L.F. as per item 4

DETENTION AREA
Storage Elevation = 8
Volume = 2,586 C.F.
(Volume Req'd = 2,520)

2" 10' & 1" 10' GRD-HP-5 (THROUGH EXT LIGHTING CON)

SCALE: 1"=20'