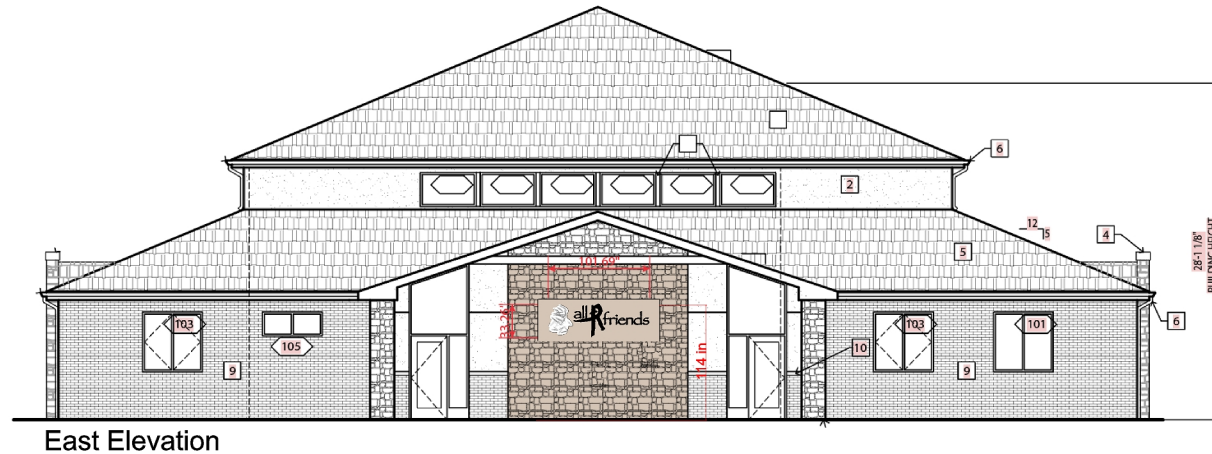


# SPECIFICATIONS SHEET

101.69" x 33.26" Non-Illuminated 1/2" Acrylic Logo and Letters

PID: 273-012214

## Artwork / Example



East Elevation

SCALE: .063" = 1'



"R" w= 31.82", h= 33.26"

"l" w= 1.9", h= 13.2"

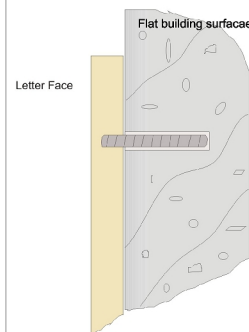
Crayon scribble: w=24.07", h=30.07"

East Elevation -Custom dimensional letters,

1/2" acrylic, drill flush stud mounted,

overall size: 33.26" x 101.69"w

## Flat Cut Acrylic - Flush Stud Mount



**Flush Stud Mount**  
Threaded studs screwed into tapped holes.

**Installation**  
Using a drilling template as your guide, drill holes into mounting surface, slightly larger than the stud diameter. Blow out holes, press letters with studs into holes and check for proper alignment. Adjust letters as needed by opening holes with drill bit.  
Once letters are straight, fill holes with silicone, epoxy, or mortar (based on letter size & weight). Coat studs with adhesive, then press into holes.  
Note: Some installer recommend a slight stand-off from the mounting surface to prevent water & dirt from getting trapped.  
Tape letters to mounting surface until adhesive sets.

## Size:

101.69"x33.26" (23.5 sq ft)

## Quantity: 1

## Material:

1/2" acrylic

## Mounting:

Flush stud mounted to flat surface of building  
Per COSA Standards - A minimum of one connector per ten SF, but not less than four shall be used for each sign or sign component. For individual wall letters, a minimum of two connectors shall be used for each letter. 114" above grade to top of signage

**ROW:530 Ft**

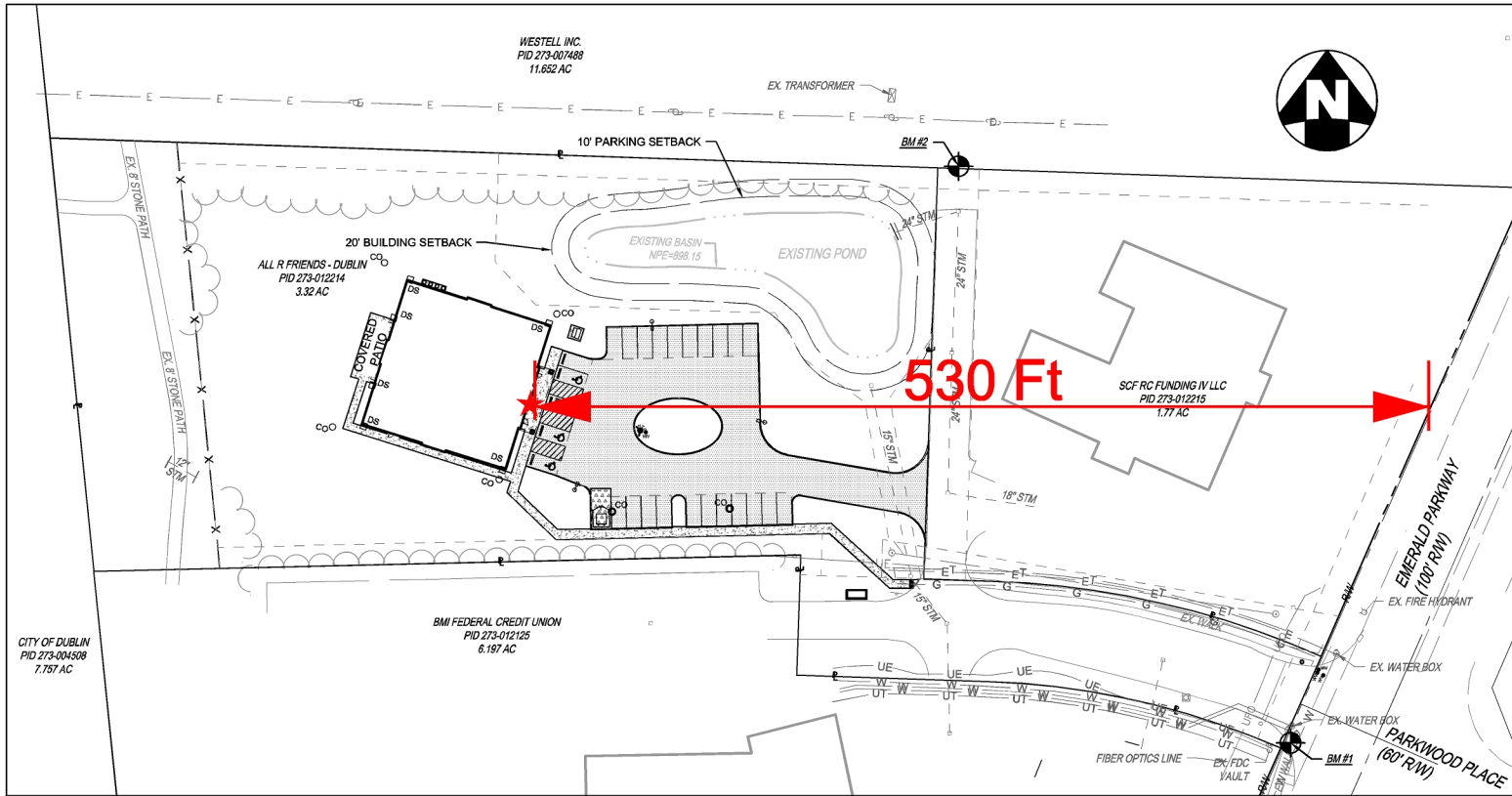
## COLORS:

2025 Black & SW- 2429  
Palais White

# SPECIFICATIONS SHEET

## 101.69" x 33.26" Flush Stud Mount 1/2" Acrylic Logo and Letters

PID: 273-012214



**Size:**  
101.69"x33.26" (23.5 sq ft)

**Quantity:** 1

**Material:**  
1/2" acrylic

**Mounting:**  
Flush stud mount method. Per COSA Standards - A minimum of one connector per ten SF, but not less than four shall be used for each sign or sign component. For individual wall letters, a minimum of two connectors shall be used for each letter.

**ROW:** 530 Ft

**COLORS:**  
Black & White

