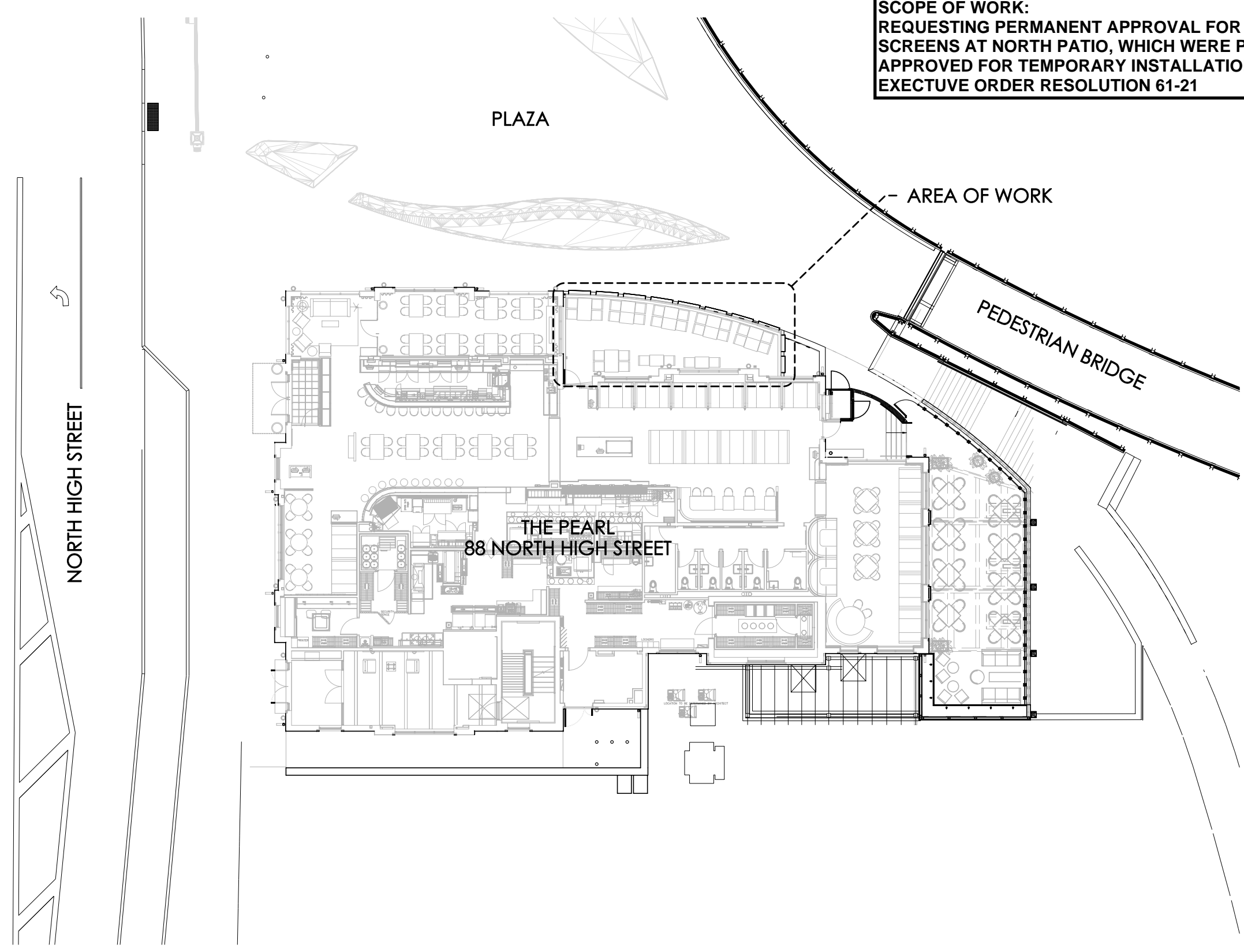


SCOPE OF WORK:
 REQUESTING PERMANENT APPROVAL FOR ROLL-DOWN
 SCREENS AT NORTH PATIO, WHICH WERE PREVIOUSLY
 APPROVED FOR TEMPORARY INSTALLATION BY WAY OF
 EXECUTIVE ORDER RESOLUTION 61-21



BEAN

J CARTER BEAN ARCHITECT
 4400 NORTH HIGH STREET
 SUITE 401 • COLUMBUS
 OHIO • 43214

TEL 614 262 2529
 FAX 614 262 2529

THE PEARL
 88 N. HIGH STREET
 DUBLIN, OHIO 43017

FOR
BRIDGE PARK WEST D, LLC
 6640 RIVERSIDE DRIVE, SUITE 500
 DUBLIN, OHIO 43017

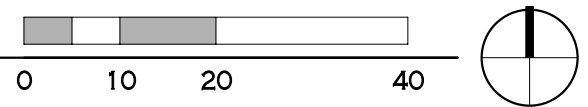
ISSUE	REVISION	DATE
ZONING		December 13, 2021

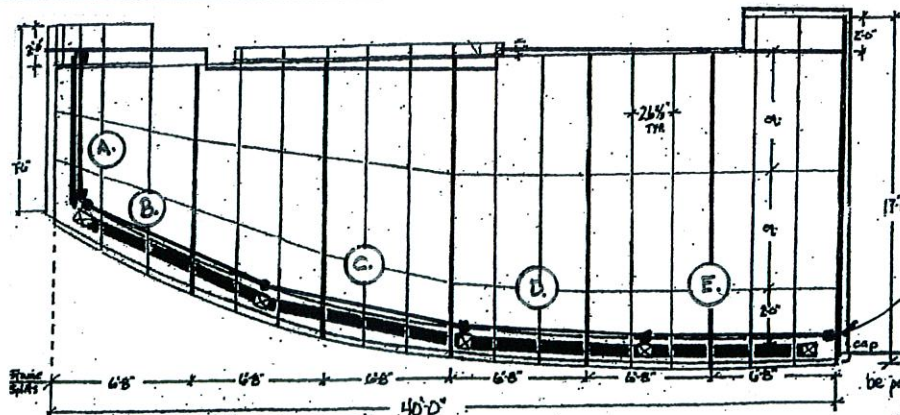
**ARCHITECTURAL
 SITE PLAN**

BEAN# 00000.00

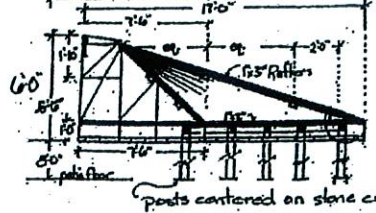
SD-1

A SITE PLAN
 SCALE: 1/8" = 1'-0"

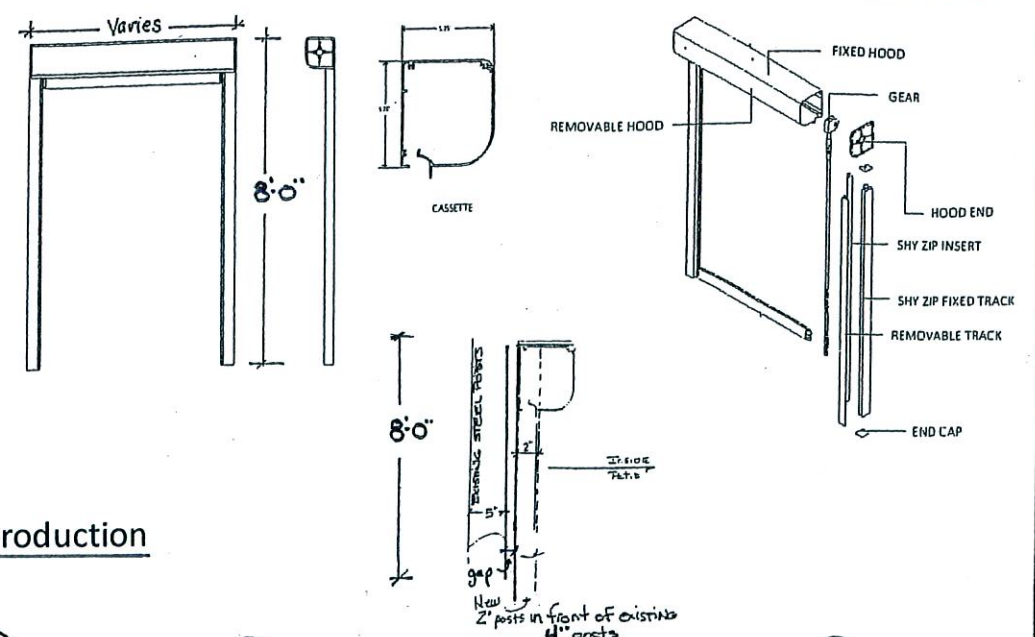




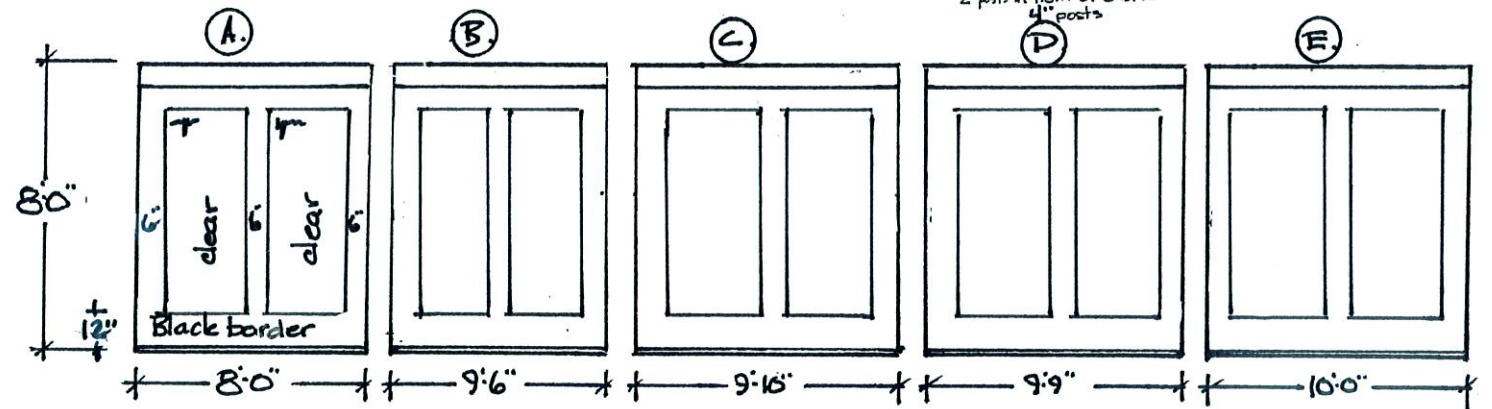
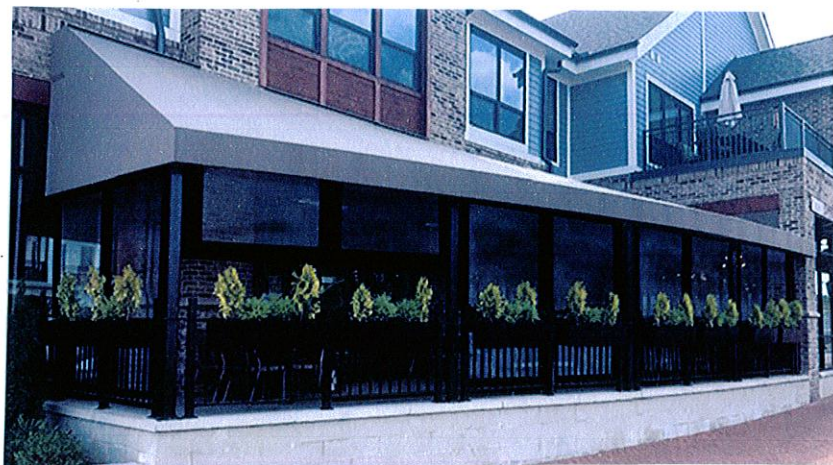
All new 2" sub-frame behind existing posts
 Awning frame will be post center of building to allow posts to border on cap



Top of awning frame mounts under soldier brick to allow enough pitch for proper drainage and room for sprinkler systems.



All Measurements to be field verified prior to production



Specifications:

- 5 - Manual roll downs (Corradi), tracks and cassette powder coated (Black)
- Roll down fabric: Ferrari satin vinyl boarders w/ Clear windows
- 2 - solid black material filler panels at walls

CAMERON MITCHELL THE PEARL 88 N. HIGH DUBLIN, OH 43017

Scale: N.T.S. Date: SEPT, 25 2020 Drawn By: JBO

Capital City Awning Co.

577 N. Fourth St. Columbus, Ohio 43215 Ph. (614) 221-5404 Fax: (614) 385-8420

Revisions:	Date
1 #7	10-1-20
2	
Drawing Number	
1 of 1	



VIEW LOOKING SOUTHWEST

BEAN

J CARTER BEAN ARCHITECT
 4400 NORTH HIGH STREET
 SUITE 401 • COLUMBUS
 OHIO • 43214
 TEL 614 262 5111
 FAX 614 262 2529

THE PEARL
 88 N. HIGH STREET
 DUBLIN, OHIO 43017

FOR
BRIDGE PARK WEST D, LLC
 6640 RIVERSIDE DRIVE, SUITE 500
 DUBLIN, OHIO 43017

ISSUE	REVISION	DATE
ZONING		December 13, 2021

BEAN# 00000.00

A-1



VIEW LOOKING SOUTH

BEAN

J CARTER BEAN ARCHITECT
 4400 NORTH HIGH STREET
 SUITE 401 • COLUMBUS
 OHIO • 43214
 TEL 614 262 5111
 FAX 614 262 2529

THE PEARL
 88 N. HIGH STREET
 DUBLIN, OHIO 43017

FOR
BRIDGE PARK WEST D, LLC
 6640 RIVERSIDE DRIVE, SUITE 500
 DUBLIN, OHIO 43017

ISSUE	REVISION	DATE
ZONING		December 13, 2021

BEAN# 00000.00

A-2



VIEW LOOKING SOUTHEAST

BEAN

J CARTER BEAN ARCHITECT
 4400 NORTH HIGH STREET
 SUITE 401 • COLUMBUS
 OHIO • 43214

TEL 614 262 5111
 FAX 614 262 2529

THE PEARL
 88 N. HIGH STREET
 DUBLIN, OHIO 43017

FOR
BRIDGE PARK WEST D, LLC
 6640 RIVERSIDE DRIVE, SUITE 500
 DUBLIN, OHIO 43017

ISSUE	REVISION	DATE
ZONING		December 13, 2021

BEAN# 00000.00

A-3



DETAIL AT NORTHEAST CORNER



DETAIL AT TOP OF SCREEN



DETAIL AT BOTTOM OF SCREEN

BEAN

J CARTER BEAN ARCHITECT
 4400 NORTH HIGH STREET
 SUITE 401 • COLUMBUS
 OHIO • 43214

TEL 614 262 5111
 FAX 614 262 2529

THE PEARL
 88 N. HIGH STREET
 DUBLIN, OHIO 43017

FOR
BRIDGE PARK WEST D, LLC
 6640 RIVERSIDE DRIVE, SUITE 500
 DUBLIN, OHIO 43017

ISSUE	REVISION	DATE
ZONING		December 13, 2021

BEAN# 00000.00

A-4