

To: Members of Dublin City Council

From: Dana L. McDaniel, City Manager

Date: February 28, 2022

Initiated By: Robert E. Ranc, Jr., Deputy City Manager/Chief Operating Officer
Jay Anderson, Public Service Director
Jean-Ellen Willis, PE, Deputy Director – Transportation & Mobility
Shawn Krawetzki, PLA, ASLA, Landscape Architect Manager

Re: City Entryways

Background

At the November 30, 2021 and February 22, 2022 Community Development Committee (CDC) meetings, the CDC considered the issue of updating the City's entryway signs, to include adding monument signs at highly-trafficked City entryways. The staff memos for both the November 30, 2021 and the February 22, 2022 CDC meetings, which provide a substantial amount of additional background information, are attached for reference.

City Entryway Signs

With reference to non-monument City entryway signs, the CDC considered several font and style options, as well as different options for the associated signposts. The CDC is recommending Lucida Bright font, with a shadowing on the letters. Further, the CDC is recommending a pedestal signpost consistent with the signposts used for the City's wayfinding signs (see below). The CDC feels the pedestal signposts will provide an upgrade over the current standard signposts and provide a consistent style throughout the City for both entryway and wayfinding signs. The CDC requested staff evaluate the possibility of using a plastic material for the signpost. Staff has researched this request and not been able to identify a viable commercial grade plastic option for the signposts.



CDC Recommended Entryway Sign and Signpost

The CDC recommends City staff fabricate the entryway signs in-house, with a contractor installing the pedestal signposts and associated concrete foundation. The cost estimates for the CDC's recommendation are shown below. The CDC recommends a phased implementation plan to spread the cost of installation over approximately the next five (5) years. This will result in an increase to the operating budget of approximately \$45,000 - \$50,000 annually.

Pedestal Pole with Decorative Base (in-house fabrication)	
Pedestal Pole with Decorative Base	\$3,300
Concrete Foundation	\$2,800
Landscape	\$1,000
Cost per Sign	\$7,100
Locations	25
Sub-Total	\$177,500
Contractor Costs (8%)	\$14,200
Contingency (20%)	\$35,500
Total Costs	\$227,200

Monument Signs

Staff recommends adding monument signs at six (6) highly trafficked City entryways (see map below).



Proposed Monument Sign Locations

At the November 30, 2021 meeting, the CDC considered several examples of potential monument signs, settling on a style that features stacked stone and a wooden mast arm (see below).



CDC Preferred Style for Monument Signs

At the February 22, 2022 meeting, staff presented several monument sign options for the CDC's consideration (see attached staff report from the February 22, 2022 CDC meeting). Upon consideration of the different options, CDC is recommending a monument sign consistent with the image above, featuring Ohio limestone and a traditional stone cap (see below).



CDC Recommended Monument Sign

The cost estimate for the recommended monument sign is included below. The CDC recommends considering funding for the proposed monument signs as part of the 2023 – 2027 Capital Improvement Program.

Monument Sign Cost Estimate	
Cost per Sign	\$19,615
Landscape Cost	\$1,500
Locations	6
Sub-Total	\$126,690
Contractor Cost (8%)	\$10,135
Contingency (20%)	\$25,338
Total	\$162,163

Recommendation

The CDC recommends City entryway signs as shown above, with Lucida Bright font and shadowed letters, and pedestal signposts consistent with the City's current wayfinding signs. The CDC recommends a phased implementation over the next five years.

Further, the CDC is recommending the installation of monument signs at six locations throughout the City as shown and described above. The monument signs will feature Ohio limestone and a traditional stone cap. The CDC recommends considering funding for the proposed monument signs as part of the 2023 – 2027 Capital Improvement Program.

To: Members of Community Development Committee

From: Dana L. McDaniel, City Manager

Date: February 15, 2022

Initiated By: Robert E. Ranc, Jr., Deputy City Manager/Chief Operating Officer
Jay Anderson, Public Services Director
Jean-Ellis Willis, PE, Deputy Director – Transportation & Mobility
Shawn Krawetzki, PLA, ASLA, Landscape Architect Manager

Re: City Entryways

Background

At the November 30, 2021 Community Development Committee (CDC) meeting, the CDC considered several issues regarding proposed updates to City entryways. Specifically, the CDC considered the appropriate font and style for City entryway signs and the appropriate style for monument signs. The staff memo from the November 30, 2021 CDC meeting is attached for reference.

City Entryway Signs

Staff presented four font options for the CDC's consideration. The CDC directed staff to proceed with Lucida Bright font. Additionally, the CDC directed staff to remove the accolade badges from the sign design and return with design options including shadowing on the lettering and different post options.

Based on the CDC's direction, staff has provided four options for the CDC's consideration (see Appendix A; the options can be viewed in greater detail on the attached presentation). Each of the options features Lucida Bright font as selected. The options show what each sign would look like with and without shadowed lettering, as well the City's current standard signposts or enhanced signposts (pedestal posts with decorative base). For the pedestal posts, staff is recommending a style consistent with the City's wayfinding signs. This will provide consistency throughout the City. The CDC had a general discussion on the possibility of upgrading the posts on street and traffic signs throughout the City. Staff will return to the CDC at a future date to discuss potential options on this topic.

Cost estimates for the options are included below. It should be noted that the signs can be fabricated in-house at the City's sign shop, or a contractor can fabricate the signs. If the Council prefers shadowing on the letters, a contractor will likely have the ability to provide greater detail than the City's sign shop. The sign shop will provide a mock-up for the CDC meeting to illustrate its capacity regarding shadowing on the letters. Further, a phasing plan can be implemented to spread the cost of installation across multiple budget years if preferred.

City Entryway Signs – Cost Estimates

Pedestal Pole with Decorative Base (in-house fabrication)	
Pedestal Pole with Decorative Base	\$3,300
Concrete Foundation	\$2,800
Landscape	\$1,000
Locations	25
Sub-Total	\$177,500
Contractor Costs (8%)	\$14,200
Contingency (20%)	\$35,500
Total Costs	\$227,200
Pedestal Pole with Decorative Base (contractor fabrication)	
Pedestal Pole with Decorative Base	\$3,300
Concrete Foundation	\$2,800
Sign Fabrication	\$3,000
Landscape	\$1,000
Locations	25
Sub-Total	\$252,500
Contractor Costs (8%)	\$20,200
Contingency (20%)	\$50,500
Total Costs	\$323,200
Standard City Posts (in-house fabrication)	
Standard Sign Pole (Black)	\$200
Pole Anchors	\$100
Landscape	\$1,000
Locations	25
Sub-Total	\$32,500
Contingency (20%)	\$6,500
Total Costs	\$39,000
Standard City Posts (contractor fabrication)	
Standard Sign Pole (Black)	\$200
Pole Anchors	\$100
Sign Fabrication	\$3,000
Landscape	\$1,000
Locations	25
Sub-Total	\$107,500
Contractor Costs (8%)	\$8,600
Contingency (20%)	\$21,500
Total Costs	\$137,600

Monument Signs

Staff provided five examples of monument signs for the CDC's consideration. The CDC selected an option featuring a stacked stone column and wood mast arm (see below). The CDC directed staff to return with options based on this design, featuring limestone for the column and design options consistent with the City's existing aesthetic.



Preferred Monument Sign Style

Based on the CDC's direction, staff has developed five monument sign options for the CDC's consideration (see Appendix B; the options can be viewed in greater detail on the attached presentation). Each option is based on the CDC's preferred style, featuring limestone columns, wood mast arms, and Celtic knot icons. The Celtic knot icons can be switched based on preference for each option. Additionally, Concept 5 illustrates a black background for the Celtic knot icon, which can be substituted in place of the gray background for any of the concepts. Cost estimates for each option are included below. As stated above, a phasing plan can be implemented to spread the cost of installation across multiple budget years if preferred. Further, staff recommends including the selected option as part of the 2023 – 2027 Capital improvements Program.

Monument Signs – Cost Estimates

	Concept 1: Wood Cantilever	Concept 2: Stacked Stone Column w/ Wood Cantilever	Concept 3: Stone Column – Standard Cap	Concept 4: Stone Column – Dome Cap
Cost per Sign	\$19,720	\$22,940	\$39,500	\$42,500
Landscape Cost	\$1,500	\$1,500	\$1,500	\$1,500
Locations	6	6	6	6
Sub-Total	\$127,320	\$146,640	\$246,000	\$264,000
Contractor Cost (8%)	\$10,186	\$11,731	\$19,680	\$21,120
Contingency (20%)	\$25,464	\$29,328	\$49,200	\$52,800
Total	\$162,970	\$187,699	\$314,880	\$337,920

Recommendation

Staff recommends the committee select one of the proposed options for both entryway signs and monument signs for recommendation to the full Council.

Appendix A – Entryway Sign Options

Option A – Pedestal Pole w/ No Shadow



Option B – Pedestal Pole w/ Shadow



Option C – Standard Pole w/ No Shadow



Option D – Standard Pole w/ Shadow



Appendix B – Monument Sign Concepts



Concept 1: Wood Cantilever



Concept 2: Stacked Stone Column w/
Wood Cantilever



Concept 3: Stone Column – Standard Cap



Concept 4: Stone Column – Dome Cap (gray)



Concept 5: Stone Column – Dome Cap (black)

To: Committee Members

From: Dana L. McDaniel, City Manager

Date: November 23, 2021

Initiated By: Robert Ranc, Deputy City Manager/Chief Operating Officer
Jay Anderson, Public Services Director
Jean-Ellen Willis, PE, Deputy Director – Transportation & Mobility
Shawn Krawetzki, PLA, ASLA, Landscape Architect Manager

Re: City Entryways

Background

At the October 11, 2021 City Council meeting, staff presented proposed updates to City entryways. These updates included proposed standardization of entryway signage and landscaping, proposed monument signs at key City entryways, and proposals to improve landscape maintenance at City entryways, particularly at the I-270 at Sawmill Road Interchange and the along the I-270 Corridor. The staff report and presentation from the October 11 meeting, which provide a substantial amount of additional background information, are included with this memo as Attachment 2.

City Council provided feedback regarding staff proposals and referred the item to the Community Development Committee. Upon review of the October 11 meeting, staff has categorized City Council's feedback into four general areas:

1. City Council requested different options for updated entryway signs.
2. City Council requested an examination of the necessity of monument signs generally, as well as different design options for proposed monument signs.
3. City Council requested to explore the possibility of a "Champions Park" concept where high school athletic state champions, and potentially champions outside of athletics, can be commemorated rather than the current practice of commemorating high school athletic champions on City entryway signs.
4. City Council emphasized the importance of landscape and maintenance improvements, particularly at the I-270 at Sawmill Road Interchange.

Staff has worked to respond to Council feedback from the October 11 meeting and has provided additional options and/or information for the Committee to consider in each of these areas.

City Entryway Signs

City Council requested additional options to consider concerning updating the existing City entryway signs. One of the concerns specifically was that the proposed font was not in keeping with an inviting entryway. Best practice in traffic signs calls for as much contrast as possible on the signage to allow for readability as motorists pass the signs (i.e. white letters on dark background or dark letters on white background). For this reason, staff recommends maintaining the green background with white letters, which is both consistent with Dublin's branding guidelines and consistent with the previously described best practice.

Staff has provided three additional font selections for the Committee's consideration (included below as Appendix A). The additional font selections include one additional sans serif font and two serif fonts. Staff believes each of the four selections (the original proposal and three new alternatives) provide attractive upgrades to the existing entryway signs and seeks feedback and direction regarding a preference.

Monument Signs

Staff proposed enhancing the following six entryways with monument signs:

- Dublin Road & Glick Road
- Emerald Parkway & Sawmill Road
- Hard Road & Sawmill Road
- SR-161 & Sawmill Road
- Tuttle Crossing Boulevard & Frantz Road (NB Frantz Road)
- Hyland Croy & Post Road (Future Post Road Interchange)

The map below shows the proposed location for each monument entryway sign.



City Council provided the following feedback concerning the proposed monument signs:

- There was a question regarding the advisability of installing monument signs generally.
- There was concern that the amount of accolades featured on the proposed monument signs resulted in the signs looking too much like entry signs to a commercial or retail development. However, there was positive feedback for the proposed monument sign without the additional accolades included.
- There was a desire to consider additional options for monument/enhanced entryway signs.

If there is a desire to proceed with monument/enhanced entryway signs at key City entryways, staff has provided additional options for the Committee to consider (included below as Appendix B). It should be noted that any of the proposed signs will feature a font consistent with the final selection of City Council.

The intention of the proposals is to provide additional ideas for the Committee to consider. The options provide a range of enhanced signs, from the originally proposed monument sign (without additional accolades) to more modest signs that will still provide an enhancement to the proposed key entryways. Based on Committee direction, staff will finalize a design and provide associated cost estimates.

"Champions Park" Concept

Councilmembers were in favor of considering a different approach to the City's current practice of honoring the three most recent high school athletic championships from each of the City's high schools at entryway signs throughout the City. Specifically, the idea of a "Champions Park" in an existing City park to honor high school athletic champions – and perhaps champions outside of athletics – was of particular interest to several Councilmembers. Staff has identified a potential 1.85-acre area in Coffman Park that can be designated as a "Champions Park" area (see below).



Additionally, staff has provided a vision board to illustrate potential design ideas for the park (included below as Appendix C). In considering the idea of a "Champions Park," staff has identified a number of issues that will need to be addressed, including the following:

- Identify if the park should include champions from activities other than athletics (the City can work with the school district to identify other state-recognized championships if so desired).
- Determine if the park should include previous City champions. If so, the City will need to determine if there should be a historic cut-off date, which will have space implications.
- Determine if Dublin residents that attend high schools outside of City limits should be included if they win state championships. This would likely only pertain to individual championships as opposed to team championships, which would necessarily include several non-Dublin residents.

If there is a desire to move forward with the "Champions Park" concept, staff will work on preparing more detailed designs, as well as budget level cost estimates, to include for consideration in the FY 2023 – FY 2027 CIP.

I-270 at Sawmill Road Interchange

At the October 11 City Council meeting, staff proposed working with ODOT and the City of Columbus to take over maintenance of the entire I-270 at Sawmill Road interchange, including mowing the east side of the interchange and the maintenance of all expansion joints in the concrete medians from Billingsley Road south to SR 161 at Dublin Grandville Road. Staff recommended contracting this work; the estimated the cost is \$30,000. Additionally, staff proposed moving the mowing of the I-270 corridor to a contractor at the estimated cost of \$100,000. These projects and associated cost increases are included in the recently adopted 2022 Operating Budget; accordingly, staff will include these work items in its 2022 work plan.

Additionally, there was a request to improve the landscaping plan at the I-270 at Sawmill Road interchange. Staff is developing preliminary concepts and coordinating with ODOT and will return to the committee at a future meeting for further consideration.

Recommendation

Staff recommends the committee consider the proposed entryway signs, monument signs, and "Champions Park" concept presented in this memo and provide staff feedback regarding its preferences for further consideration.

Appendix A – Alternative Fonts on Welcome Signs



Myriad Pro Font- October 11 Proposal



Alternative 1: Cambria Font



Alternative 2: Tahoma Font



Alternative 3: Lucida Bright Font

Appendix B – Monument Sign Options



Alternative A



Alternative B



October 11 Proposal



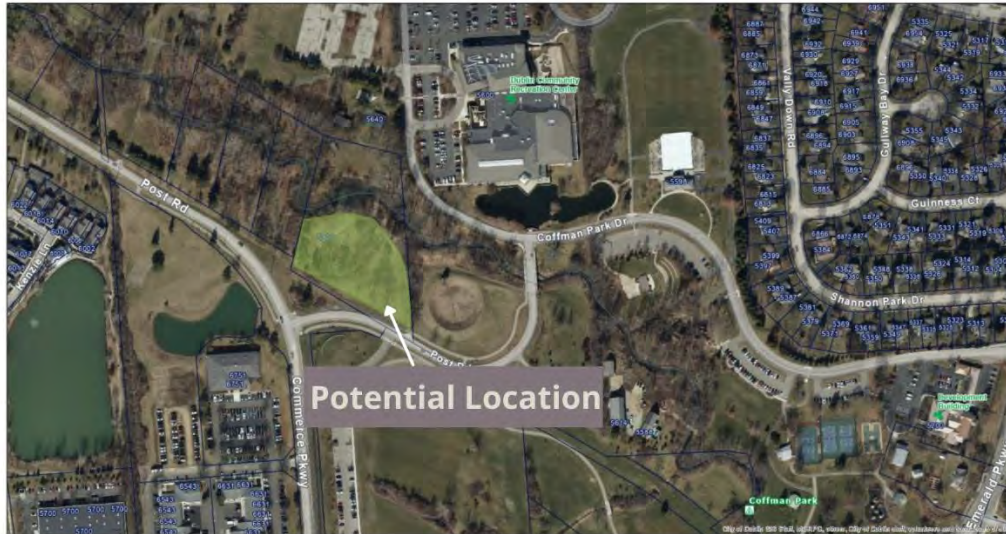
Alternative C



Alternative D

Appendix C: "Champions Park" Vision Board

"Champions Park" Concepts



Passive Walking Area



Potential Park Elements

Memorial Columns



Memorial Pavers



Plazas



To: Committee Members

From: Dana L. McDaniel, City Manager

Date: November 23, 2021

Initiated By: Robert Ranc, Deputy City Manager/Chief Operating Officer
Jay Anderson, Public Services Director
Jean-Ellen Willis, PE, Deputy Director – Transportation & Mobility
Shawn Krawetzki, PLA, ASLA, Landscape Architect Manager

Re: City Entryways

Background

At the October 11, 2021 City Council meeting, staff presented proposed updates to City entryways. These updates included proposed standardization of entryway signage and landscaping, proposed monument signs at key City entryways, and proposals to improve landscape maintenance at City entryways, particularly at the I-270 at Sawmill Road Interchange and the along the I-270 Corridor. The staff report and presentation from the October 11 meeting, which provide a substantial amount of additional background information, are included with this memo as Attachment 2.

City Council provided feedback regarding staff proposals and referred the item to the Community Development Committee. Upon review of the October 11 meeting, staff has categorized City Council's feedback into four general areas:

1. City Council requested different options for updated entryway signs.
2. City Council requested an examination of the necessity of monument signs generally, as well as different design options for proposed monument signs.
3. City Council requested to explore the possibility of a "Champions Park" concept where high school athletic state champions, and potentially champions outside of athletics, can be commemorated rather than the current practice of commemorating high school athletic champions on City entryway signs.
4. City Council emphasized the importance of landscape and maintenance improvements, particularly at the I-270 at Sawmill Road Interchange.

Staff has worked to respond to Council feedback from the October 11 meeting and has provided additional options and/or information for the Committee to consider in each of these areas.

City Entryway Signs

City Council requested additional options to consider concerning updating the existing City entryway signs. One of the concerns specifically was that the proposed font was not in keeping with an inviting entryway. Best practice in traffic signs calls for as much contrast as possible on the signage to allow for readability as motorists pass the signs (i.e. white letters on dark background or dark letters on white background). For this reason, staff recommends maintaining the green background with white letters, which is both consistent with Dublin's branding guidelines and consistent with the previously described best practice.

Staff has provided three additional font selections for the Committee's consideration (included below as Appendix A). The additional font selections include one additional sans serif font and two serif fonts. Staff believes each of the four selections (the original proposal and three new alternatives) provide attractive upgrades to the existing entryway signs and seeks feedback and direction regarding a preference.

Monument Signs

Staff proposed enhancing the following six entryways with monument signs:

- Dublin Road & Glick Road
- Emerald Parkway & Sawmill Road
- Hard Road & Sawmill Road
- SR-161 & Sawmill Road
- Tuttle Crossing Boulevard & Frantz Road (NB Frantz Road)
- Hyland Croy & Post Road (Future Post Road Interchange)

The map below shows the proposed location for each monument entryway sign.



City Council provided the following feedback concerning the proposed monument signs:

- There was a question regarding the advisability of installing monument signs generally.
- There was concern that the amount of accolades featured on the proposed monument signs resulted in the signs looking too much like entry signs to a commercial or retail development. However, there was positive feedback for the proposed monument sign without the additional accolades included.
- There was a desire to consider additional options for monument/enhanced entryway signs.

If there is a desire to proceed with monument/enhanced entryway signs at key City entryways, staff has provided additional options for the Committee to consider (included below as Appendix B). It should be noted that any of the proposed signs will feature a font consistent with the final selection of City Council.

The intention of the proposals is to provide additional ideas for the Committee to consider. The options provide a range of enhanced signs, from the originally proposed monument sign (without additional accolades) to more modest signs that will still provide an enhancement to the proposed key entryways. Based on Committee direction, staff will finalize a design and provide associated cost estimates.

"Champions Park" Concept

Councilmembers were in favor of considering a different approach to the City's current practice of honoring the three most recent high school athletic championships from each of the City's high schools at entryway signs throughout the City. Specifically, the idea of a "Champions Park" in an existing City park to honor high school athletic champions – and perhaps champions outside of athletics – was of particular interest to several Councilmembers. Staff has identified a potential 1.85-acre area in Coffman Park that can be designated as a "Champions Park" area (see below).



Additionally, staff has provided a vision board to illustrate potential design ideas for the park (included below as Appendix C). In considering the idea of a "Champions Park," staff has identified a number of issues that will need to be addressed, including the following:

- Identify if the park should include champions from activities other than athletics (the City can work with the school district to identify other state-recognized championships if so desired).
- Determine if the park should include previous City champions. If so, the City will need to determine if there should be a historic cut-off date, which will have space implications.
- Determine if Dublin residents that attend high schools outside of City limits should be included if they win state championships. This would likely only pertain to individual championships as opposed to team championships, which would necessarily include several non-Dublin residents.

If there is a desire to move forward with the "Champions Park" concept, staff will work on preparing more detailed designs, as well as budget level cost estimates, to include for consideration in the FY 2023 – FY 2027 CIP.

I-270 at Sawmill Road Interchange

At the October 11 City Council meeting, staff proposed working with ODOT and the City of Columbus to take over maintenance of the entire I-270 at Sawmill Road interchange, including mowing the east side of the interchange and the maintenance of all expansion joints in the concrete medians from Billingsley Road south to SR 161 at Dublin Grandville Road. Staff recommended contracting this work; the estimated the cost is \$30,000. Additionally, staff proposed moving the mowing of the I-270 corridor to a contractor at the estimated cost of \$100,000. These projects and associated cost increases are included in the recently adopted 2022 Operating Budget; accordingly, staff will include these work items in its 2022 work plan.

Additionally, there was a request to improve the landscaping plan at the I-270 at Sawmill Road interchange. Staff is developing preliminary concepts and coordinating with ODOT and will return to the committee at a future meeting for further consideration.

Recommendation

Staff recommends the committee consider the proposed entryway signs, monument signs, and "Champions Park" concept presented in this memo and provide staff feedback regarding its preferences for further consideration.

Appendix A – Alternative Fonts on Welcome Signs



Myriad Pro Font- October 11 Proposal



Alternative 1: Cambria Font



Alternative 2: Tahoma Font



Alternative 3: Lucida Bright Font

Appendix B – Monument Sign Options



Alternative A



Alternative B



October 11 Proposal



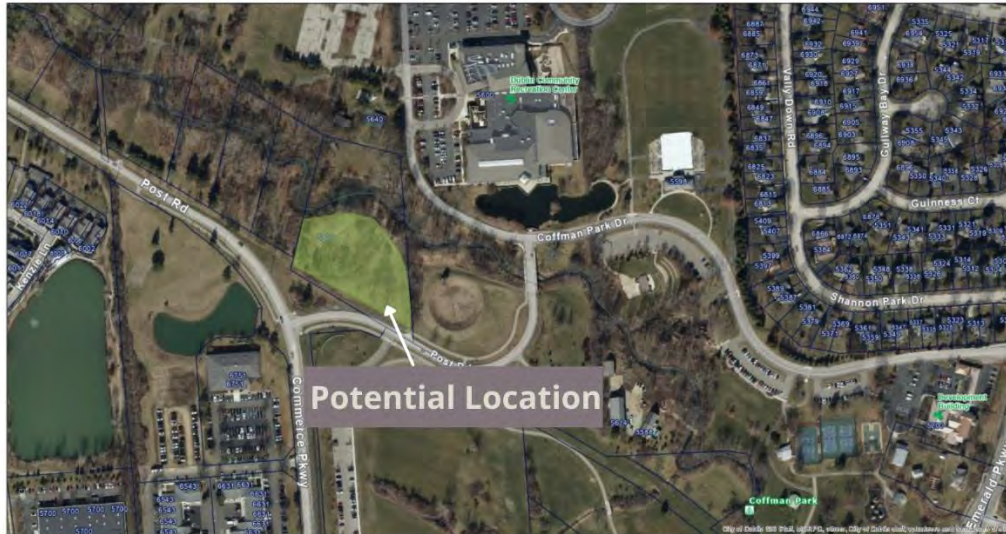
Alternative C



Alternative D

Appendix C: "Champions Park" Vision Board

"Champions Park" Concepts



Passive Walking Area



Potential Park Elements

Memorial Columns



Memorial Pavers



Plazas



To: Members of Dublin City Council

From: Dana L. McDaniel, City Manager

Date: September 30, 2021

Initiated By: Robert Ranc, Deputy City Manager/Chief Operating Officer
Jay Anderson, Public Services Director
Jeannie Willis, P.E., Deputy Director – Transportation & Mobility
Shawn Krawetzki, PLA, ASLA, Landscape Architect Manager

Re: Proposed City Entryway Improvements

Background

Over the past several months, City staff has evaluated the condition of the City's entryways. Additionally, Councilmember Keeler inquired regarding the state of some of the City's entryways in June 2021. Although many of the City's entryways are in generally good condition, there are a number of improvements that can be made to improve the aesthetic of the entryways. Additionally, although staff recommends maintaining minimal, attractive signs at most city entryways, there is an opportunity to upgrade certain key entryways in a way that is more impactful. Specifically, staff found the following:

- The City's entryway signs are not consistent to current City branding (A map and current photos of existing city entryway signs can be found at the following link)
<https://dublinohio.maps.arcgis.com/apps/instant/attachmentviewer/index.html?appid=a10c976f07c14075b136edd3bc9dbb6c¢er=-83.0797%2C40.1268&level=13&attachmentIndex=0&selectedLayerId=17b7987666a-layer-2>
- The landscaping surrounding the City's entryway signs lacks similar aesthetics and a consistent level of maintenance.
- There is an opportunity to install monument signs at key City entryways that better define the City's boundaries and represent the City's commitment to creating a well-kept, attractive community.
- Site-specific issues should be addressed at the Frantz Rd. and US-33/SR-161 entryway, the Sawmill Rd./I-270 Interchange, and the I-270 Corridor.

Updated Entryway Signs – Standardized Signs

The City's current entryway signs are dated, non-standard throughout the City, and do not conform to the City's current branding (see examples below). The Division of Transportation and Mobility has worked with Communication and Public Information to update the signs to conform to the City's current branding (**Exhibit A**).



6500 Emerald Pkwy.



Dublin Rd. & Frantz Rd.



**Rings Rd. &
Houchard Rd.**

The proposed signs provide a standardized location for various City recognitions (high school state championships, Purple Heart City, Tree City USA, Bicycle Friendly Community, and Sustainable 2050 Community). Additionally, the high school logos used on existing entryway signs have not been updated in several years. Jerome High School recently updated its branding, and Coffman High School and Scioto High School may desire to re-visit the logos the City is using to recognize state champions. Staff recommends contacting each high school to receive updated guidance regarding the logos desired for the City's entryway signs. Staff plans to maintain three state champion recognition locations for each high school per the policy outlined in Resolution 65-06, which was passed in 2006 (the resolution is attached to this memo). Staff recommends moving some of the current locations of the high school recognition signs to allow for the standardization of entryway signs and locations in better proximity to the high schools. If Council accepts staff's recommendations, staff will return at a future Council meeting to update the ordinance with the new locations.

Staff proposes including three of the special recognitions listed above on each sign. A detailed proposal for the specific locations for each accolade sign is included in the comprehensive table attached to this memo (**Exhibit B**). Per the proposal, each recognition will be placed at 20 locations throughout the City. The Division of Transportation and Mobility can absorb the cost of producing the new signs with the funding currently proposed in the FY 2022 operating budget.

Updated Entryway Signs – Landscaping

Several entryway sign locations throughout the City have attractive landscaping; however, this is not the case at all entryway sign locations. Staff proposes maintaining a landscaping package of an attractive mulch bed with flowering plants and tall decorative grasses. Although staff intends to use day lilies in as many locations as possible to maintain consistency, due to environmental factors at various locations, staff may use other flowering plants with a similar aesthetic in some areas. The attached comprehensive table of entryway signs identifies the landscaping needs for

each location. An example of an existing well-maintained entryway sign consistent with the proposed landscaping can be seen below. The estimated cost to improve the areas that need updated landscaping updates is \$4,500 - \$5,000 total, which can be absorbed in the existing Division of Public Services operating budget.



Monument Signs

Staff recommends enhancing the following six entryways with monument signs:

- **Dublin Road & Glick Road**
- **Emerald Parkway & Sawmill Road**
- **Hard Road & Sawmill Road**
- **SR-161 & Sawmill Road**
- **Tuttle Crossing Boulevard & Frantz Road (NB Frantz Road)**
- **Hyland Croy & Post Road (Future Post Road Interchange)**

The map below shows the proposed location for each entryway sign. These are key entrances to the City that are heavily trafficked. Monument signs will help set these entrances apart from bordering cities, and they will better represent the pride and care Dublin takes in being a uniquely attractive city. Mock-ups of the proposed monument signs are attached to this memo.



The table below shows an estimated cost for the proposed monument signs:

Preliminary Cost Estimate

Element	Cost Per Location	Assumed Number of Locations	Estimated Cost
Monument Sign	\$20,000 - \$25,000	6	\$120,000 - \$150,000
Landscaping	\$5,000 - \$10,000	6	\$30,000 - \$60,000
Design Cost	\$4,000	6	\$24,000
Total			\$174,000 - \$234,000

The Finance Department has reviewed this proposal and determined there will be sufficient unencumbered funds in the 2021 Capital Improvement Program to cover the proposed costs.

The following assumptions are made concerning the proposed monument signs:

- The monument signs are assumed to be approximately five feet wide and three to four feet tall.
- The monument signs include a dry-stacked stone facing similar to the walls in Veterans Park, the walls being constructed along South High Street, and other projects throughout the City.
- Limestone or precast concrete cap each monument sign.
- The message portions of the monument signs (Welcome to Dublin, Tree City, etc.) are mounted to the monument with the ability to remove and replace the various elements, with specific details to be determined during the design process.
- The proposed monument signs will either need to be crash worthy or include a breakaway base, since they will likely be within the clear zone of the travel way. Staff is currently assuming crash worthy signs based on the size of the signs, which will require ample foundation.
- If lighting is desired, small solar-powered floodlights can be considered. If hardwiring is necessary, staff will investigate pulling power from a nearby traffic signal. Lighting is not considered in the cost estimate provided above.
- Some level of design is expected to be coordinated, either with a sign manufacturer or a design engineer.

Additional Items for Consideration

- **Entryway at Frantz Rd. and US-33/SR-161** – On-going maintenance is necessary at this primary entrance into Dublin from I-270 and US-33. One specific aspect of this entryway that needs addressed is the informal U-turn created by both the police department and civilian motorists west of the intersection of Frantz Rd. and US-33/SR-161 (see picture below). The police department has determined that it no longer needs to use this location for U-turns. Staff will work with ODOT to have guardrails placed in this location to prevent U-turns that are ruining the landscaping in this median. Staff can then focus on rehabilitating the landscaping without the potential of cars running through it.



- **Sawmill Rd./I-270 Interchange** – Staff proposes working with ODOT and the City of Columbus regarding an agreement for the City to take over maintenance of the entirety of this interchange. Although maintenance of parts of this interchange are technically the responsibility of ODOT and the City of Columbus, neither of those parties are maintaining the area to the City's standard. The City similarly maintains the City of Columbus's roundabout at Lakehurst Court and Emerald Parkway to ensure it is maintained to Dublin's standards.

Staff is requesting an additional \$30,000 in the FY 2022 Operating Budget to contract the maintenance of this interchange, which will include mowing the east side of the interchange and the maintenance of all the expansion joints in the concrete islands from Billingsley Rd. south to SR-161/Dublin Granville Rd.

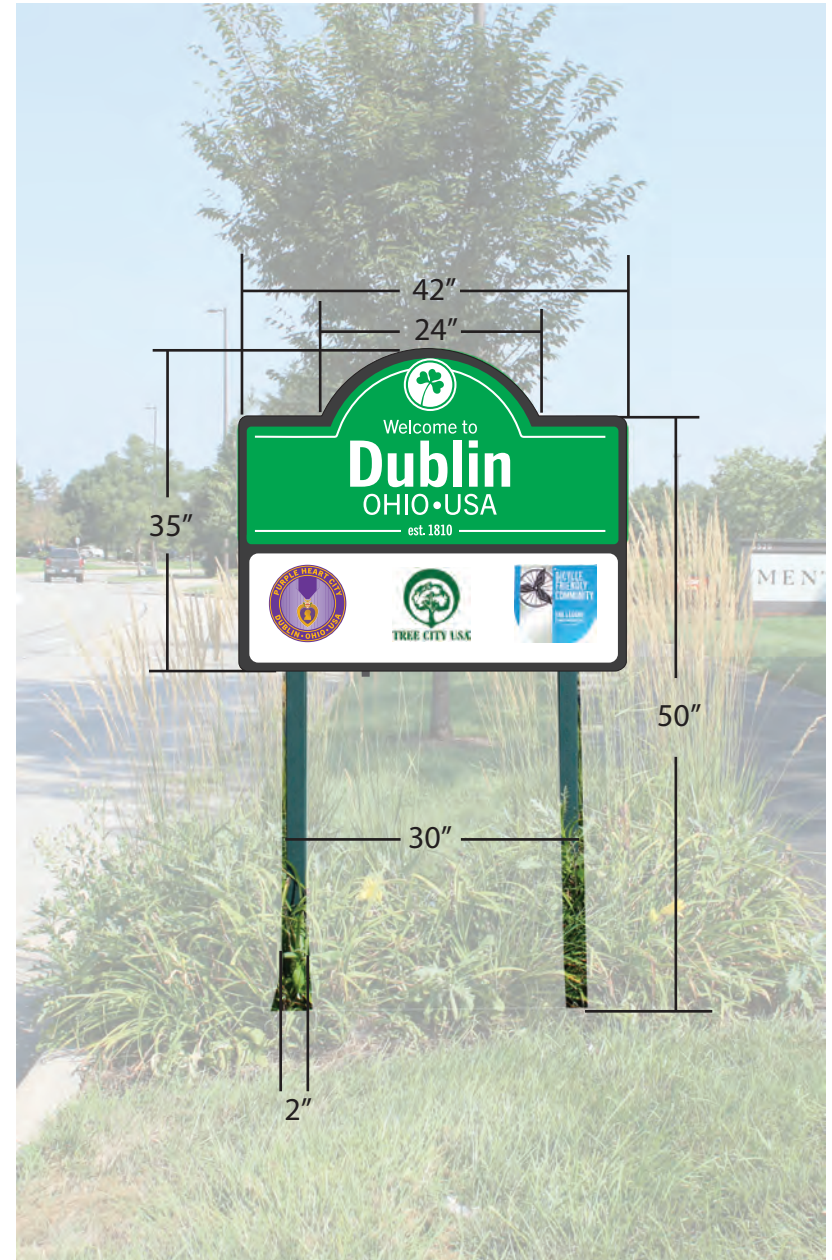
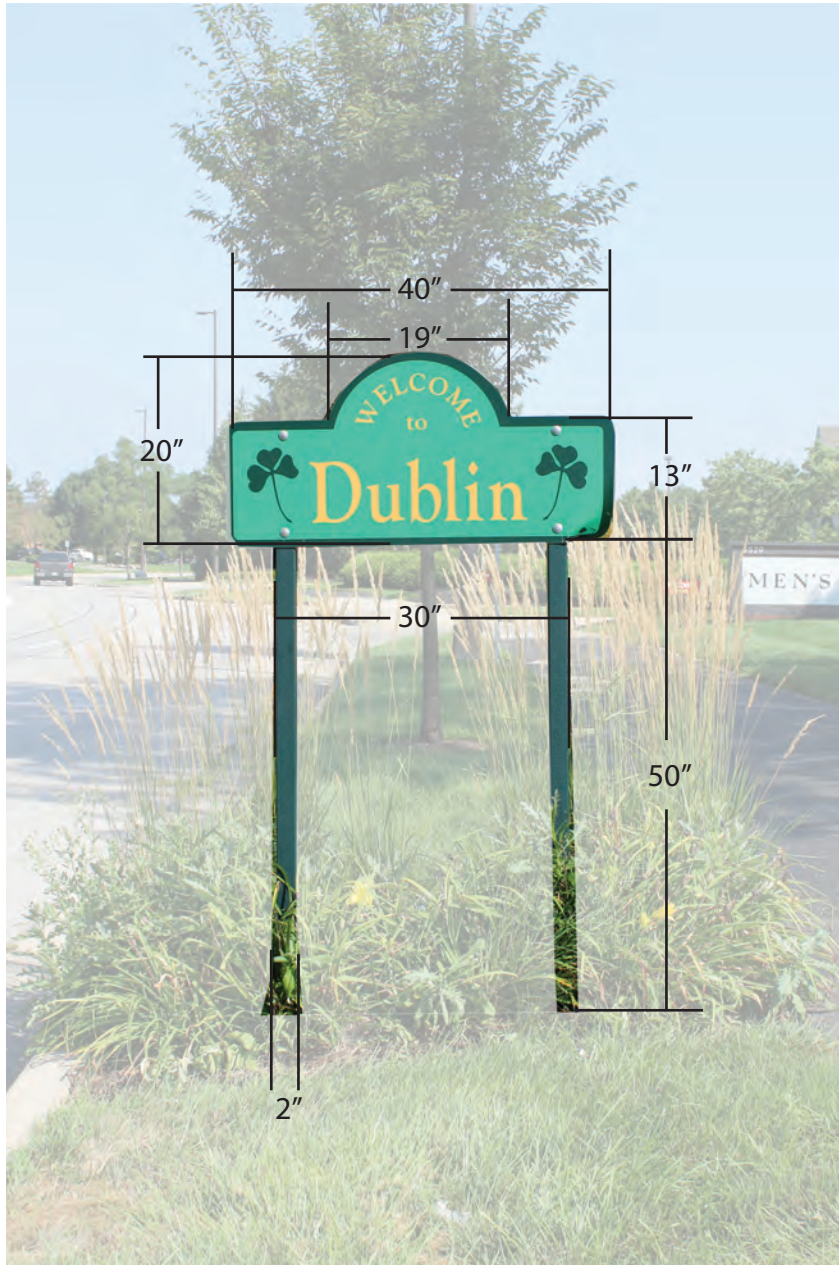
- **I-270 Corridor** – Staff proposes moving this to contract work in the upcoming budget. Staff estimates the total cost of mowing the corridor at \$100,000, which is included as a request in the FY 2022 Operating Budget.

Recommendation

Staff recommends the existing entryway signs are updated to the proposed entryway sign package that is consistent with Dublin's branding and landscape standards described in this memo. Further, staff recommends monument signs are installed at the following locations: Dublin Road & Glick Road, Emerald Parkway & Sawmill Road, Hard Road & Sawmill Road, SR-161 & Sawmill Road, Tuttle Crossing Boulevard & Frantz Road (NB Frantz Road), and Hyland-Croy Road & Post Road in conjunction with the future Post Road Interchange.

If there are any questions, please contact Robert Ranc, Deputy City Manager/COO, or the City Manager directly.

Exhibit A - Standard Non-Monument Signs





Welcome to

Dublin

OHIO • USA

est. 1810





Exhibit B - Comprehensive Entry Sign Inventory

	Proposed Monument Sign	High School Recognition	Purple Heart	Tree City	Sustainability Recognition	Bike Friendly Community	Landscaping Needs
1 Dublin Rd & Glick Rd	X	X (Coffman)	X	X	X	X	None
2 Wincombe Dr				X	X	X	None
3 Campden Lakes Blvd				X	X	X	None
4 Summit View Rd & Sawmill Rd			X		X	X	Needs grasses & more lilies
5 Emerald Parkway & Sawmill Rd	X						
6 Hard Rd & Sawmill Rd	X	X (Scioto)	X	X	X	X	Needs mulch bed, grasses, & lilies
7 Bright Rd & Sawmill Rd		X (Scioto)			X	X	Needs mulch bed, grasses, & lilies
8 161 & Sawmill	X	X (Scioto)	X	X	X	X	
9 161 @ Wendy's							
10 Martin Rd & Sawmill Rd			X		X	X	Needs grasses
11 Dublin Rd & Frantz Rd			X	X		X	Needs grasses & lilies
12 Tuttle Crossing Rd & Frantz Rd (EB Tuttle Rd)			X	X		X	None
13 Tuttle Crossing Rd & Frantz Rd (NB Frantz Rd)	X	X (Coffman)	X	X	X	X	
14 Tuttle Crossing Rd & Blazer Pkwy			X	X		X	None
15 6500 Emerald Pkwy		X (Coffman)	X	X			Needs mulch bed, grasses, & lilies
16 Tuttle Crossing Rd @ Holiday Inn Express			X	X	X		Needs mulch bed, grasses, & lilies
17 Wilcox Rd South of Tuttle Crossing Rd			X		X	X	Needs grasses
18 Cosgray Rd & Boucher Rd			X	X	X		Needs mulch bed, grasses, & lilies
19 Cosgray Rd & Rings Rd (Main St)			X	X	X		Needs mulch bed, grasses, & lilies
20 Rings Rd West of Churchman Rd				X	X	X	Needs mulch bed & lilies
21 Rings Rd & Houchard Rd				X	X	X	Needs mulch bed, grasses, & lilies
22 Houchard Rd S of Railroad Tracks			X		X	X	Needs mulch bed, grasses, & lilies
23 Cosgray Rd & 161			X	X	X		
24 Eiterman Rd & Post Rd Roundabout			X		X	X	Needs mulch bed, grasses, & lilies
25 Hyland Croy & Post Rd (Future Post Rd Interchange)	X	X (Jerome)	X	X	X	X	
26 Hyland Croy Rd North of Tullymore Dr		X (Jerome)	X	X			Needs mulch bed, grasses, & lilies
27 Hyland Croy Rd @ Oak Park Blvd							
28 Mitchell Dewitt Rd Roundabout							Needs mulch bed, grasses, & lilies
29 Glacier Ridge Roundabout		X (Jerome)					Needs mulch bed, grasses, & lilies
30 Manley Rd & Glick Rd				X	X	X	Needs mulch bed & lilies
31 Concord Rd N of St Boswells Ct			X	X		X	Needs mulch bed, grasses, & lilies
Total Number of Recognitions		9	20	20	20	20	



EVERYTHING GROWS HERE.