

REQUEST FOR QUOTE

City of Dublin, Ohio

Division of Transportation and Mobility

Traffic Data Collection at Various Locations

EXECUTIVE SUMMARY

The City of Dublin is requesting quotes to perform traffic counts at several locations throughout the City. As such, the City would like to hire the professional services of a consulting engineering firm to provide traffic count reports for the locations shown below:

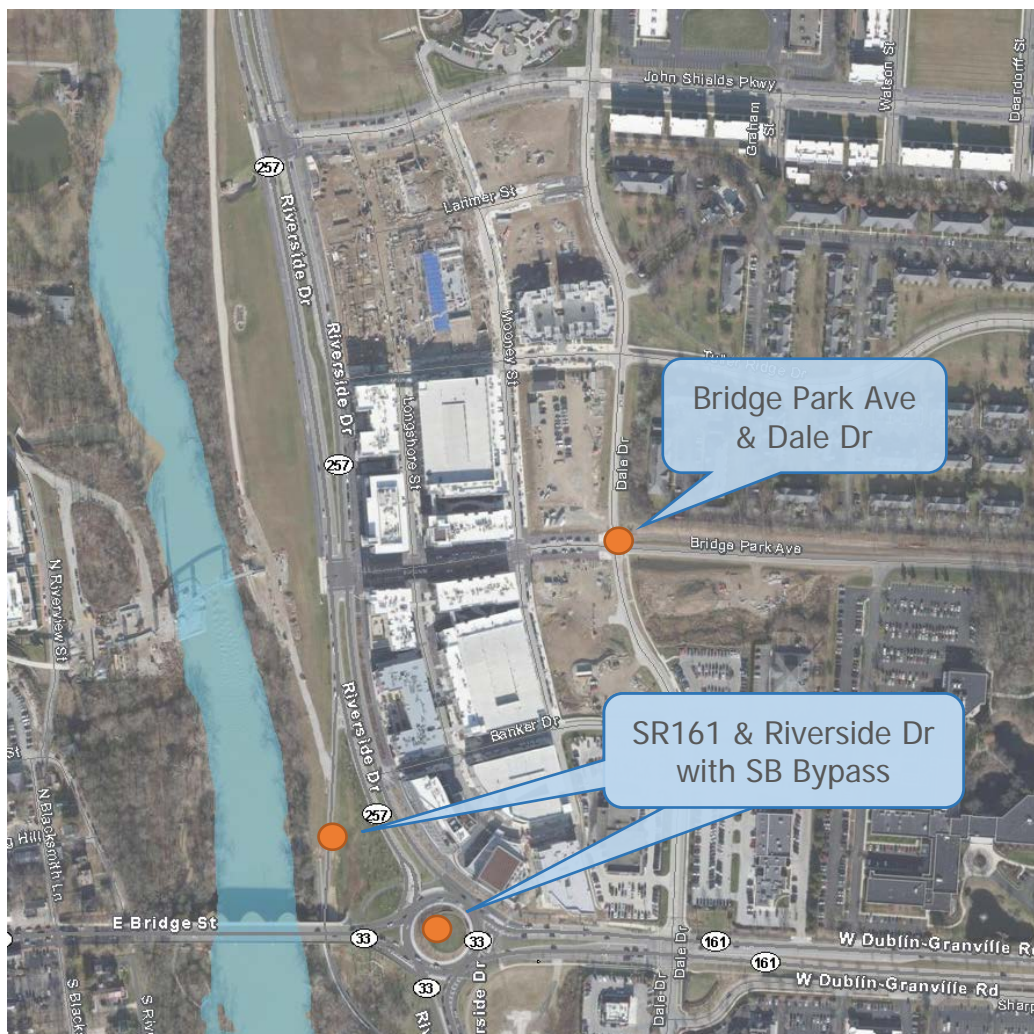


Figure 1. Traffic Movement Count Locations – Bridge Park Area

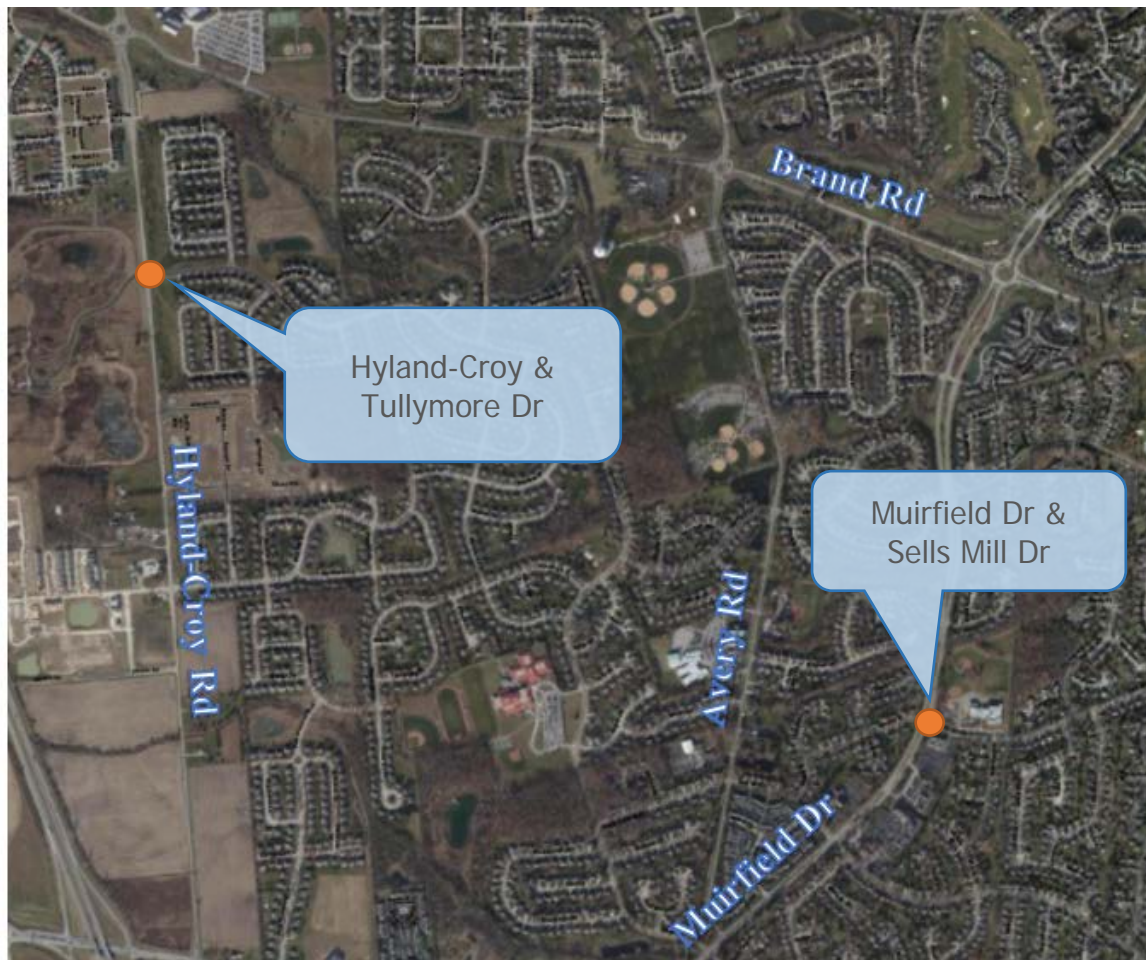


Figure 2 – Traffic Movement Count Locations - Northwest Dublin Sites



Figure 3 – Traffic Movement Count Location – West Dublin Site



Figure 4 – Traffic Movement Count Locations – Northeast Dublin Sites

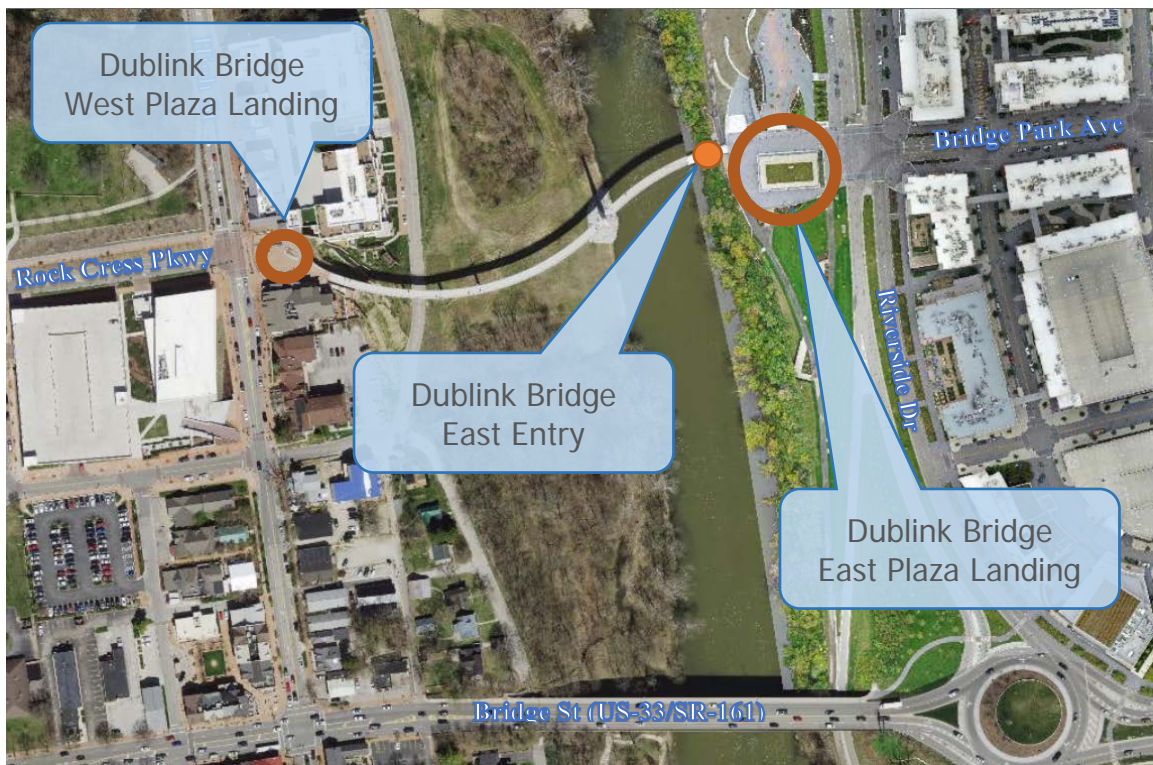


Figure 5 – Pedestrian / Bicycle / Scooter Count Locations



Figure 6 – Dublin Bridge / Riverside Crossing East Plaza



Figure 7 – Dublin Bridge West Plaza

The City of Dublin, Division of Transportation and Mobility is hereby requesting a QUOTE from selected, professional engineering consulting firms. The selected firm will provide the professional engineering services for this project in accordance with the Project Description and scope of services described below.

1.0 PROJECT DESCRIPTION

The traffic counts shall be prepared with the following criteria:

- 1.1** Counts shall use cameras to gather data.
- 1.2** Counts shall include vehicle types, including heavy vehicles, buses and bicycles traveling on the roadway. Counts shall include those crossing the approaches to the intersection in crosswalks. These would include counts of pedestrians and bicycles being walked or ridden in the crosswalks. Pedestrian count to segregate the numbers to indicate direction of pedestrian movement in each crosswalk.
- 1.3** Counts shall be reported in intervals of 15 minutes or less, and summarized by hour.
- 1.4** Counts shall be summarized by intersection approach and total entering intersection volumes.
- 1.5** Intersection Counts - 12-hour count, from 7:00 a.m. to 7:00 p.m. shall be provided at each intersection shown in Figures 1, 2, 3, and 4.
 - 1.5.1** Bridge Park Area counts (Figure 1) shall be conducted on a Tuesday, Wednesday or Thursday. Counts shall be conducted on good weather days, without a holiday in the week of the count.
 - 1.5.1.1** For count conducted for the roundabout intersection of Riverside Drive at Dublin-Granville Rd/Bridge St, collect traffic count data the southbound bypass (underpass of Bridge St bridge that also crosses the Scioto River.)
 - 1.5.2** Northwest Area counts (Figure 2), and Northeast Area counts (Figure 4) shall be conducted on a school day for Dublin City Schools, on a Tuesday, Wednesday or Thursday. Counts shall be conducted on good weather days, without a holiday in the week of the count.
 - 1.5.3** West Dublin counts (Figure 3) shall be conducted on a school day for Dublin City Schools and Hilliard City Schools, on a Tuesday, Wednesday or Thursday. Counts shall be conducted on good weather days, without a holiday in the week of the count. In addition to the turning movement counts for the intersection, please collect counts of the number of vehicles illegally using the cross-hatched areas of the intersection to make left turns or U-turns.

1.5.4 East Dublin counts (Figure 4) shall be conducted on a school day for Dublin City Schools, on a Tuesday, Wednesday or Thursday. Counts shall be conducted on good weather days, without a holiday in the week of the count.

1.6 Pedestrian, bicyclist, scooter and other vulnerable user counts

1.6.1 Counts of those entering and exiting the landing point at the east end of the Dublin Pedestrian Bridge (Figure 5).

1.6.2 Propose a strategy for collecting the pedestrian count data on the East Plaza (Figure 6) and West Plaza (Figure 7). The aerial photos of these sites are shown in the figures is marked with red lines to show the points of entry/exit for each of the Plazas. City will evaluate the proposal to count the Plazas activity on the basis of

- No safety concerns with the location(s) of the proposed video device(s)
- Perceived efficacy of the plan presented for collecting pedestrian movement data

Based on the plan that the bidder proposes for collecting this pedestrian activity, the City may opt to not perform this task.

1.6.3 Sixteen hour (16) count of pedestrians, bicyclists, and other vulnerable users, from 6:00 a.m. to 10:00 p.m. shall be provided. Counts to be collected on a Thursday, Friday, Saturday, and Sunday of a weekend, which is not a holiday. All counts for the points on the bridge crossing shall be collected on the same days.

1.7 Provide traffic count reports in electronic and hard copy formats.

1.8 Provide recording files of the video data collected for processing into the count data.

2.0 TIME OF COMPLETION

2.1 The Consultant affirms that time is of the essence regarding the execution of this project and furthermore accepts the City's commitment to have the project completed and delivered by Wednesday, May 20, 2022.

2.2 Status Updates. Consultant will email project updates on a weekly basis.

2.3 Failure of the Consultant to comply with the above-established deadline will jeopardize consideration of the Consultant for providing professional engineering services on future City projects and may be used as cause to reject future quotes submitted by the Consultant to the City.



The quote should be submitted no later than 9:00 a.m. on Wednesday, March 30, 2022. Quotes received after this deadline will NOT be considered.

If you have any questions regarding this request, please contact the project manager, Eagan Foster. Consultants should submit their Quote to:

Eagan L. Foster, P.E., PTOE
City of Dublin, Ohio
Division of Transportation and Mobility
6555 Shier Rings Road
Dublin, OH 43016

efoster@dublin.oh.us

614.410.4637

Quotation in response to
Request For Quote to perform traffic Counts

Item	Count Location	Proposed Fee
1	SR-161 at Riverside Dr Roundabout and SB Bypass	
2	Bridge Park Ave at Dale Dr	
3	Hyland-Croy Rd at Tullymore Dr	
4	Muirfield Dr at Sells Mill Dr	
5	Eiterman Rd at Shier Rings Rd	
6	Emerald Pkwy at Bright Rd	
7	Bright Rd at Inverness Ct	
8	Dublink Bridge East End	
9	Dublink Bridge East Plaza Landing Area	
10	Dublink Bridge West Plaza Landing Area	
	Total Fee ->	

Submitted by: _____

Company: _____

Address: _____

Phone number: _____

Email: _____