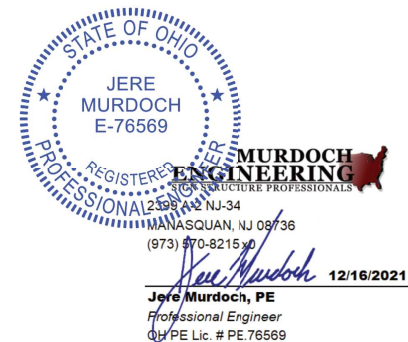


TRADER JOE'S

STORE # GC672
6355 SAWMILL RD
DUBLIN, OH

DESIGN SPECIFICATIONS	
IBC 2015 with OH amendments	2017 Ohio Building Code
ASCE 7-10	Minimum Design Loads for Buildings & Other Structures
ACI 318-14	Building Code Requirements for Structural Concrete
ANSI/AISC 360-10	Specification for Structural Steel Buildings

DESIGN LOADS	
Wind	Vult = 115 mph
Exposure	B
Risk Cat.	II
Grnd. Snow	Pg = 20 psf



AERIAL VIEW
Scale: NOT TO SCALE

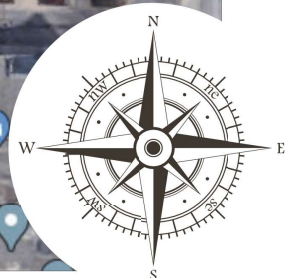
DESIGN SPECIFICATIONS	
IBC 2015 with OH amendments	2007 Ohio Building Code
ASCE 7-10	Minimum Design Loads for Buildings & Other Structures
ACI 318-14	Building Code Requirements for Structural Concrete
ANSI/AISC 360-10	Specification for Structural Steel Buildings
DESIGN LOADS	
Wind Exposure	Vult = 115 mph
Risk Cat.	B
Grnd. Snow	II
	Pg = 20 psf



STATE OF OHIO
REGISTERED PROFESSIONAL ENGINEER
JERE MURDOCH
E 76569

MURDOCH ENGINEERING
STRUCTURE PROFESSIONALS
2359 A-2 NJ-34
MANASQUAN, NJ 08736
(973) 970-8215 x0

Jere Murdoch 12/16/2021
Jere Murdoch, PE
Professional Engineer
OH PE Lic. # PE.76569



b **broadwaynational**

100 DAVIDS DR, HAUPPAUGE, NY 11788
P631.737.3140 F631.737.3160
INTERNAL USE ONLY: 25695_12.10.21_08.03_LS

AERIAL VIEW

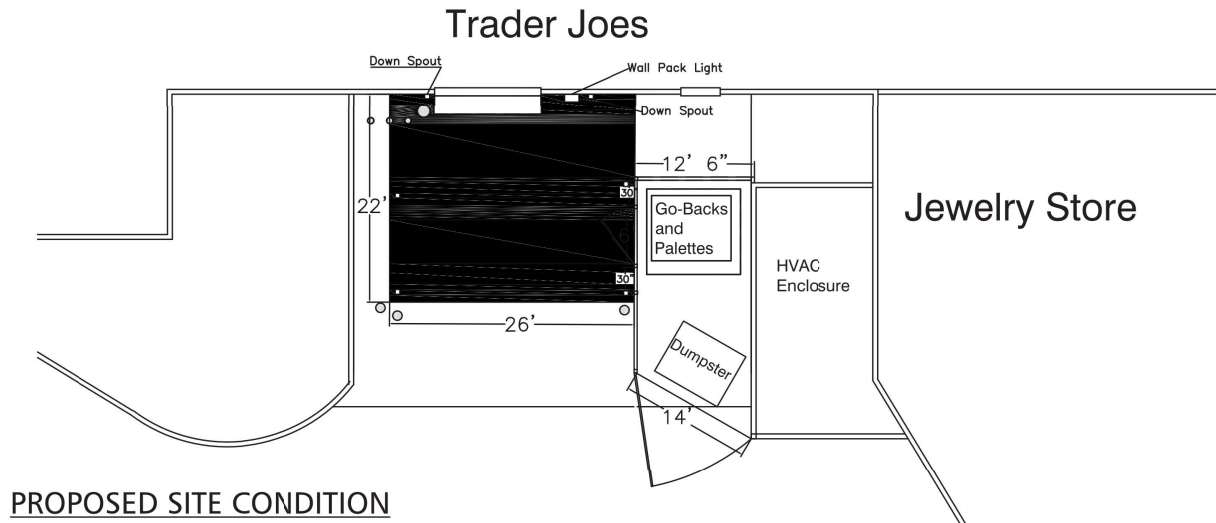
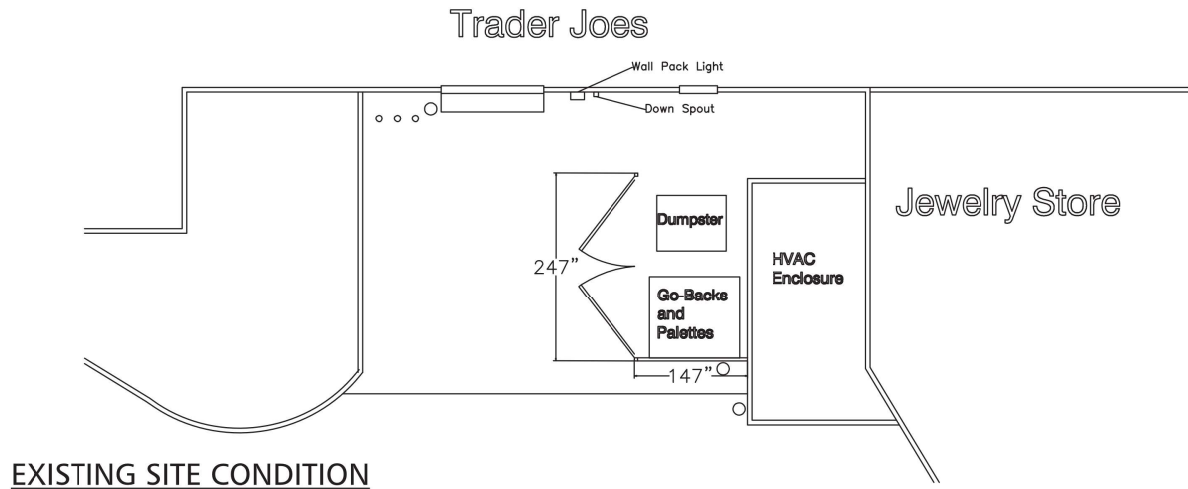
TRADER JOE'S

STORE # GC672
6355 SAWMILL RD
DUBLIN, OH

2 of 6

This artwork is the property of Broadway National. Unauthorized use, publication or distribution is prohibited.

DESIGN SPECIFICATIONS	
IBC 2015 with OH amendments	2017 Ohio Building Code
ASCE 7-10	Minimum Design Loads for Buildings & Other Structures
ACI 318-14	Building Code Requirements for Structural Concrete
ANSI/AISC 360-10	Specification for Structural Steel Buildings
DESIGN LOADS	
Wind Exposure	Vult = 115 mph
Risk Cat.	II
Grnd. Snow	Pg = 20 psf



STATE OF OHIO
 REGISTERED PROFESSIONAL ENGINEER
 JERE MURDOCH
 E-76569

MURDOCH ENGINEERING
 STRUCTURE PROFESSIONALS
 2399 A-2 NJ-34
 MANASQUAN, NJ 08736
 (973) 970-8215

Jere Murdoch 12/16/2021
Jere Murdoch, PE
 Professional Engineer
 OH PE Lic. # PE.76569

EXISTING



PROPOSED



DESIGN SPECIFICATIONS	
IBC 2015	with OH amendments
ASCE 7-10	Minimum Design Loads for Buildings & Other Structures
ACI 318-14	Building Code Requirements for Structural Concrete
ANSI/AISC 360-10	Specification for Structural Steel Buildings
DESIGN LOADS	
Wind	Vult = 115 mph
Exposure	B
Risk Cat.	II
Grnd. Snow	Pg = 20 psf



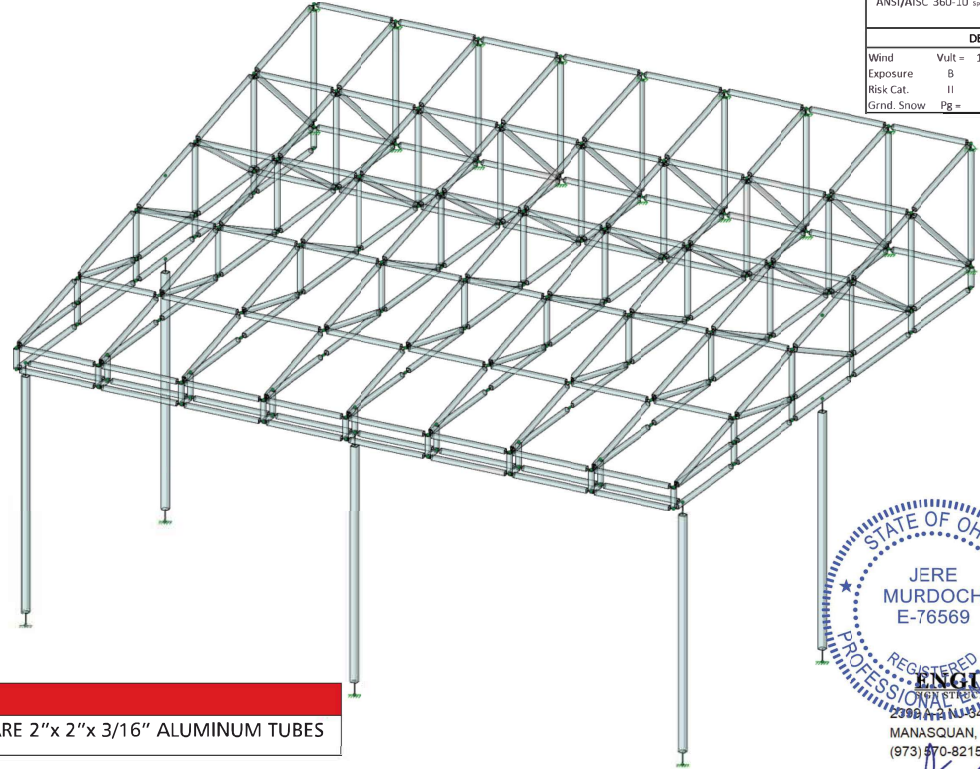
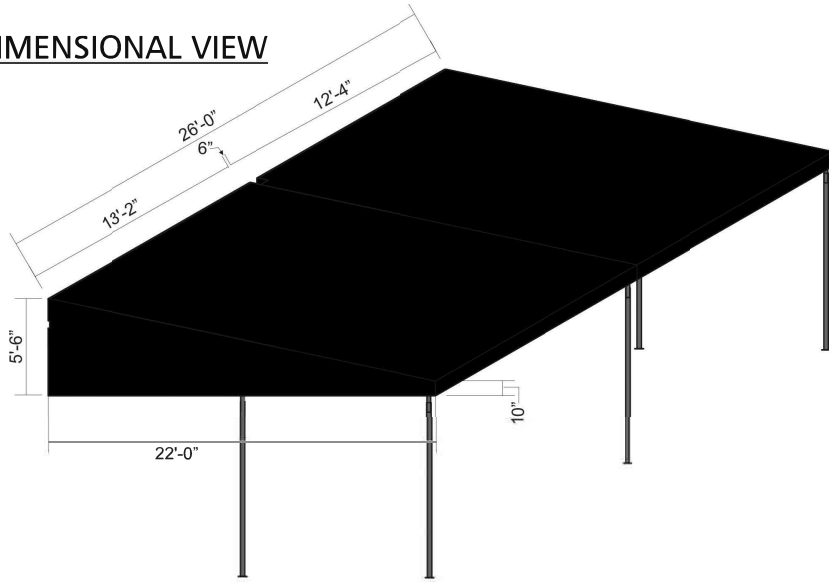
STATE OF OHIO
 JERE MURDOCH
 E-76569
 REGISTERED PROFESSIONAL ENGINEER
MURDOCH ENGINEERING
 SIGNATURE STRUCTURE PROFESSIONALS
 2399 A-2 NJ-34
 MANASQUAN, NJ 08736
 (973) 970-8215
Jere Murdoch 12/16/2021
Jere Murdoch, PE
 Professional Engineer
 OH PE Lic. # PE.76569

SIGN A

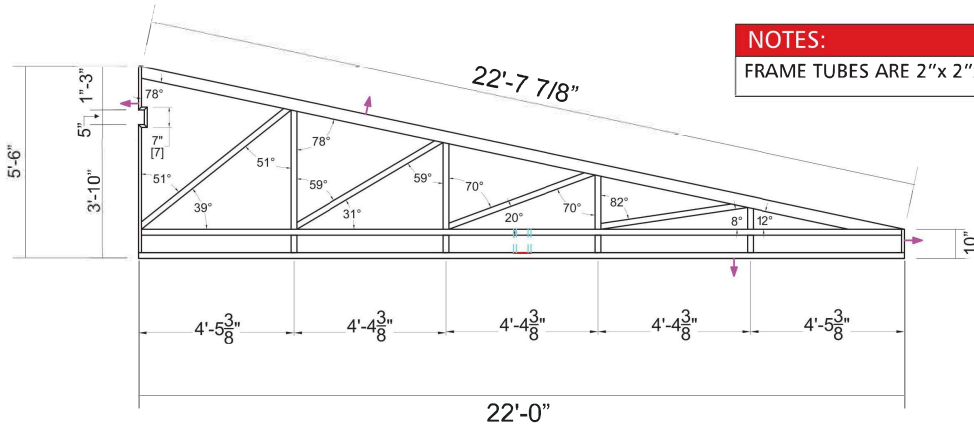
AWNING DETAIL
SCALE: 1/4" = 1'0"

DESIGN SPECIFICATIONS			
IBC	2015	with OH amendments	
ASCE	7-10	Minimum Design Loads for Buildings & Other Structures	
ACI	318-14	Building Code Requirements for Structural Concrete	
ANSI/AISC	360-10	Specification for Structural Steel Buildings	
DESIGN LOADS			
Wind	Vult =	115 mph	
Exposure	B		
Risk Cat.	II		
Grnd. Snow	Pg =	20 psf	

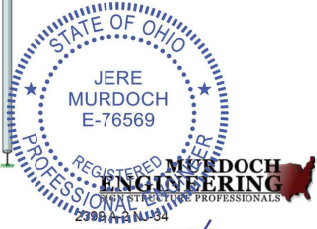
DIMENSIONAL VIEW



END VIEW



NOTES:
FRAME TUBES ARE 2"x 2"x 3/16" ALUMINUM TUBES



MURDOCH ENGINEERING
REGISTERED PROFESSIONALS
209B W. 11th St.
MANASQUAN, NJ 08736
(973) 970-8215
Jere Murdoch 12/16/2021
Jere Murdoch, PE
Professional Engineer
OH PE Lic. # PE.76569

Color Key

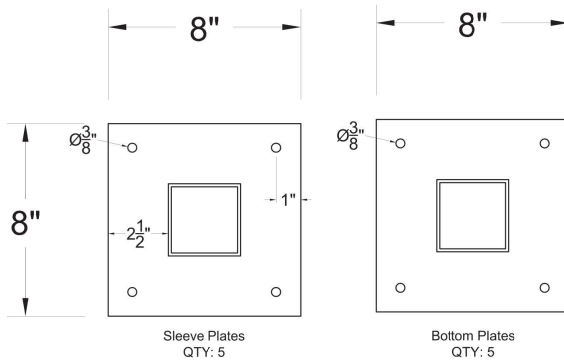
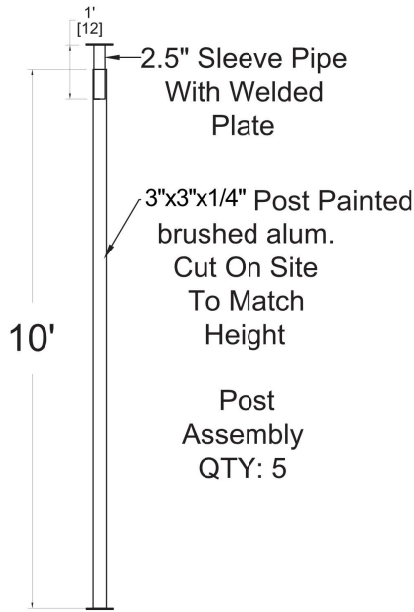
Firesist
Black

NOTES:
-AWNING SUPPORTS & FRAME TBD AFTER ENGINEERING DWGS.
-MOUNTING TO BE DETERMINED AFTER ENGINEERING DWGS
-AWNING MUST NOT EXTEND PAST BOLLARDS
-DRAWING IS FOR CONCEPT ONLY
-AWNINGS MUST BE ENGINEERED

COLOR KEY

BLACK POLY FINISH (FRAMES FINISH) MILL FINISH

AWNING DETAIL (CONT.)



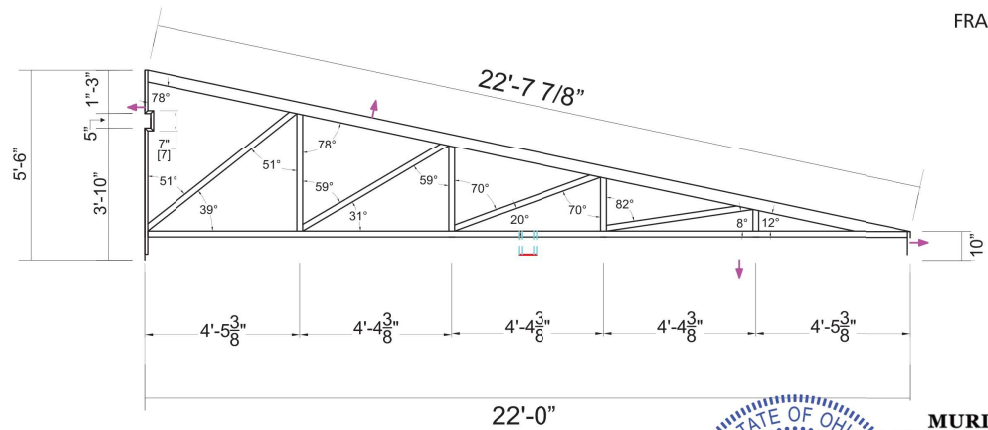
Aluminum Welding Notes:

- 1.) Welding shall be in accordance with AWS D1.2
- 2.) Aluminum alloy filler 4043 shall be used in all structural welds
- 3.) Fillet weld size shall not exceed thinnest member wall thickness of joined sections.
- 4.) Welding process GMAW or GTAW shall be in accordance with AWS D1.2
- 5.) Aluminum Tubing shall be 6061-T6 minimum.
- 6.) Provide Neoprene gaskets between dissimilar metals

Engineer's Note:

- Fasten base plates to existing min. 6" thk. concrete slab (by others) with 1/4"x2-1/2" DeWALT Screw-Bolt+ anchors (or equiv.)
- See S.1 for wall attachment detail TYP.

DESIGN SPECIFICATIONS			
IBC	2015	with	OH amendments
			2017 Ohio Building Code
ASCE	7-10	Minimum Design Loads for Buildings & Other Structures	
		ACI 318-14 Building Code Requirements for Structural Concrete	
		ANSI/AISC 360-10 Specification for Structural Steel Buildings	
DESIGN LOADS			
Wind	Vult =	115 mph	
Exposure		3	
Risk Cat.		I	
Grnd. Snow	Pg =	20 psf	



Interior Truss B

MURDOCH ENGINEERING
 SIGNATURE PROFESSIONALS
 JERE MURDOCH 2359 A-2 NJ-34
 MANASCAN, NJ 08936
 E-76569 (973) 370-2215 x0
 REGISTERED PROFESSIONAL ENGINEER
 Jere Murdoch, PE
 NJ PE Lic. # PE.76569
 12/16/2021