



Sunny Street Cafe Dublin

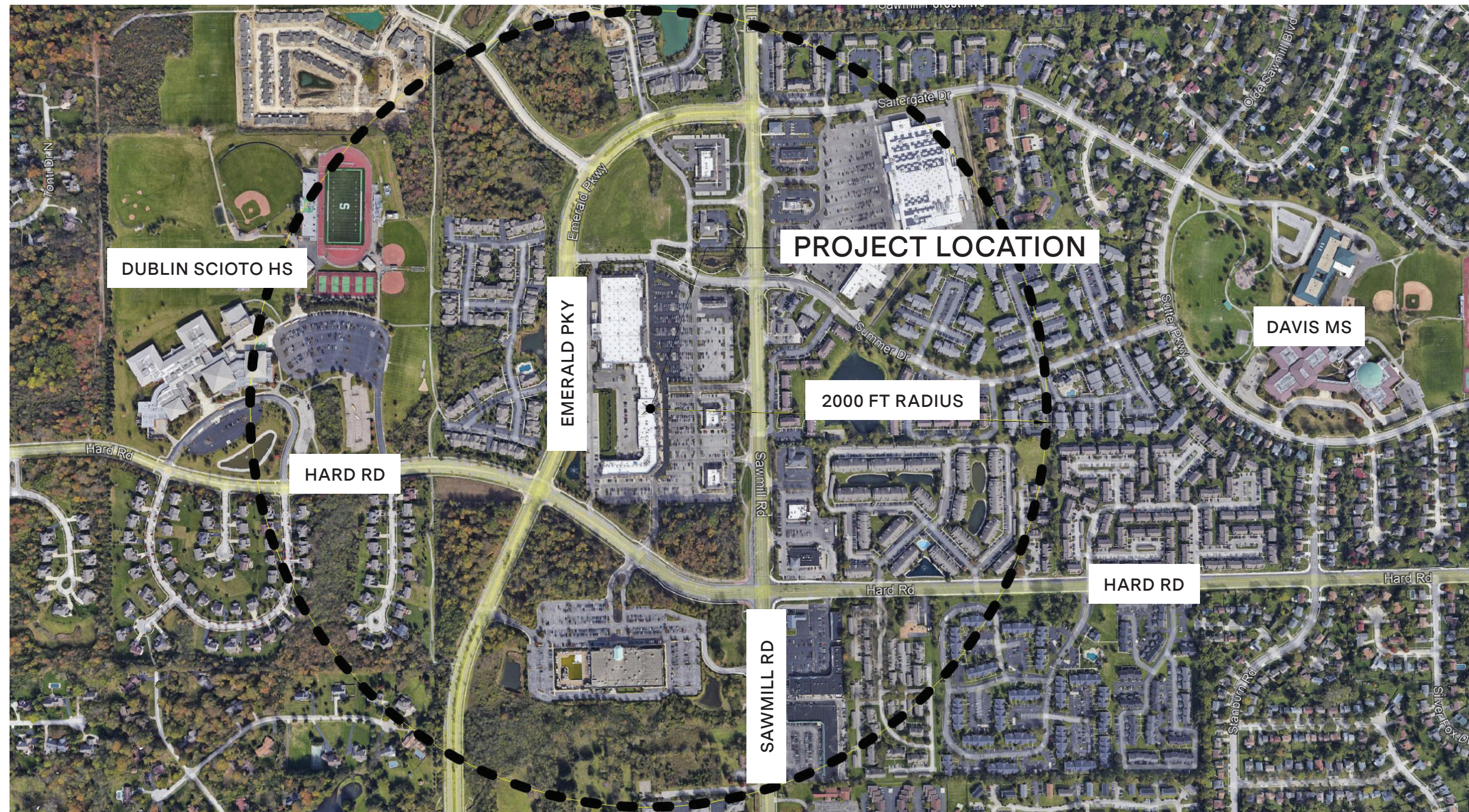
7573 Sawmill Road

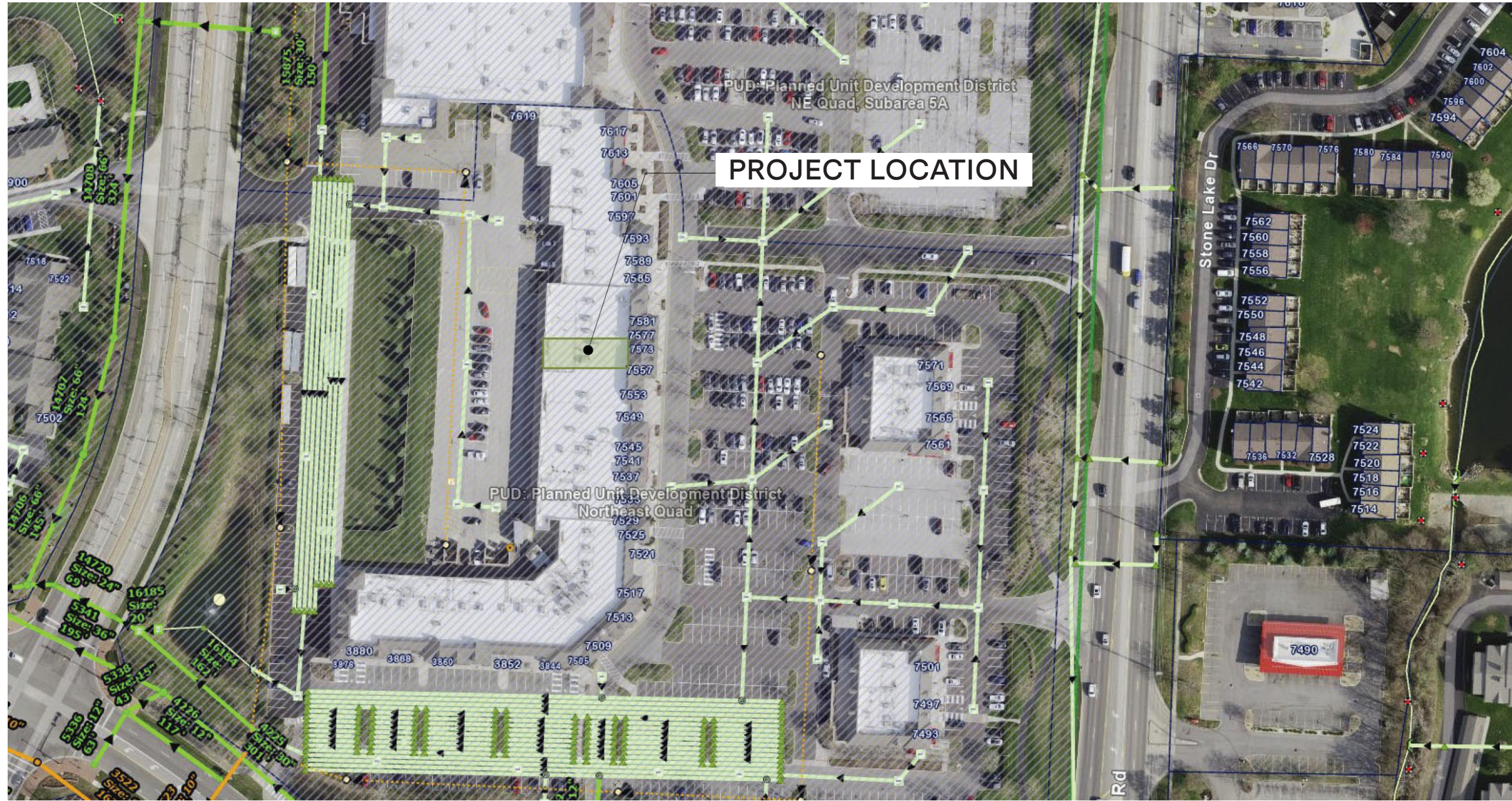
Amended Final Development Plan

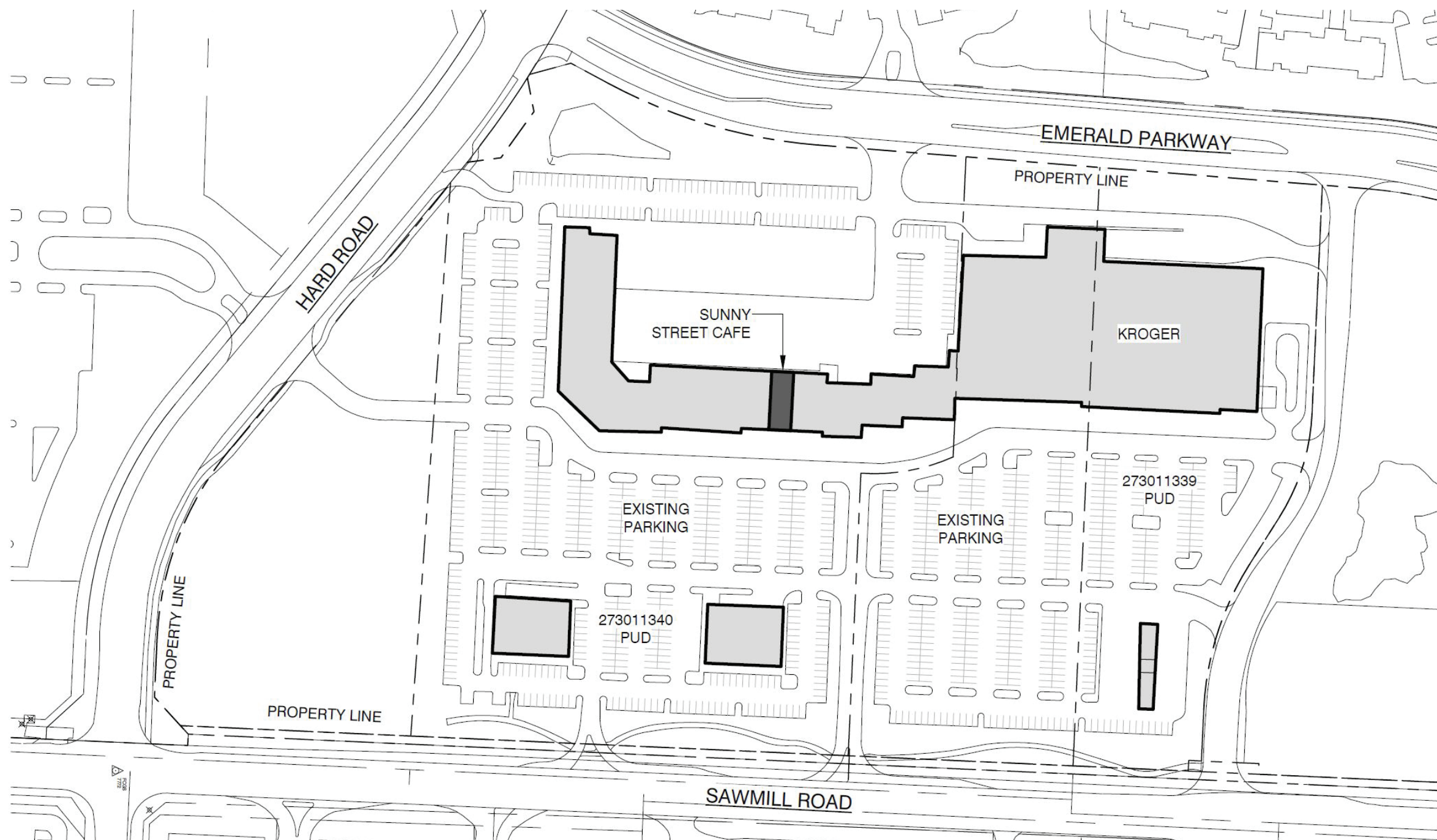
Patio Addition

August 18, 2022

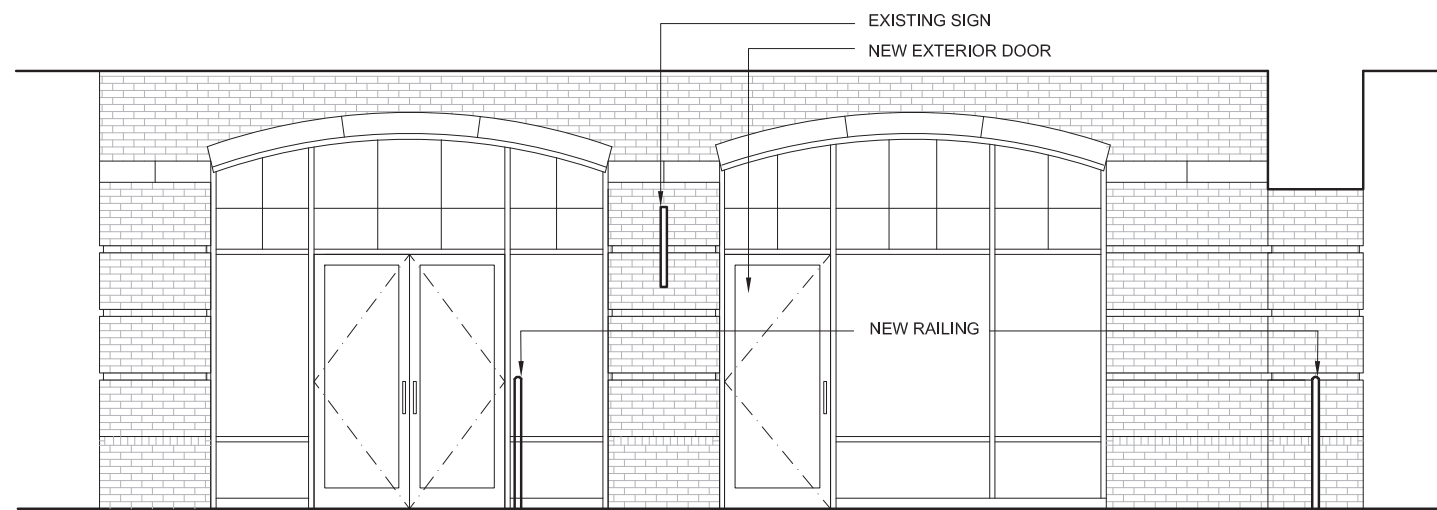
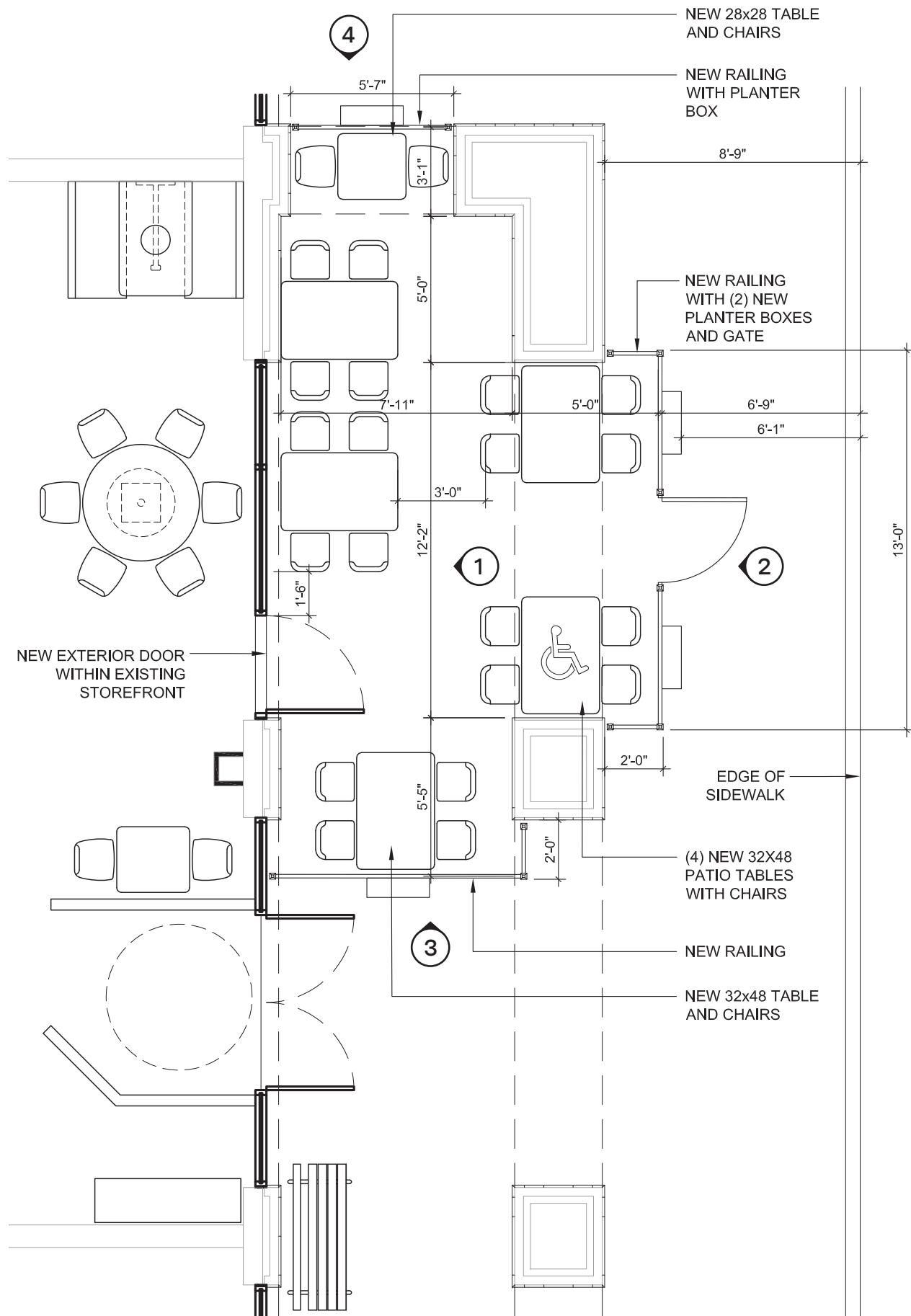




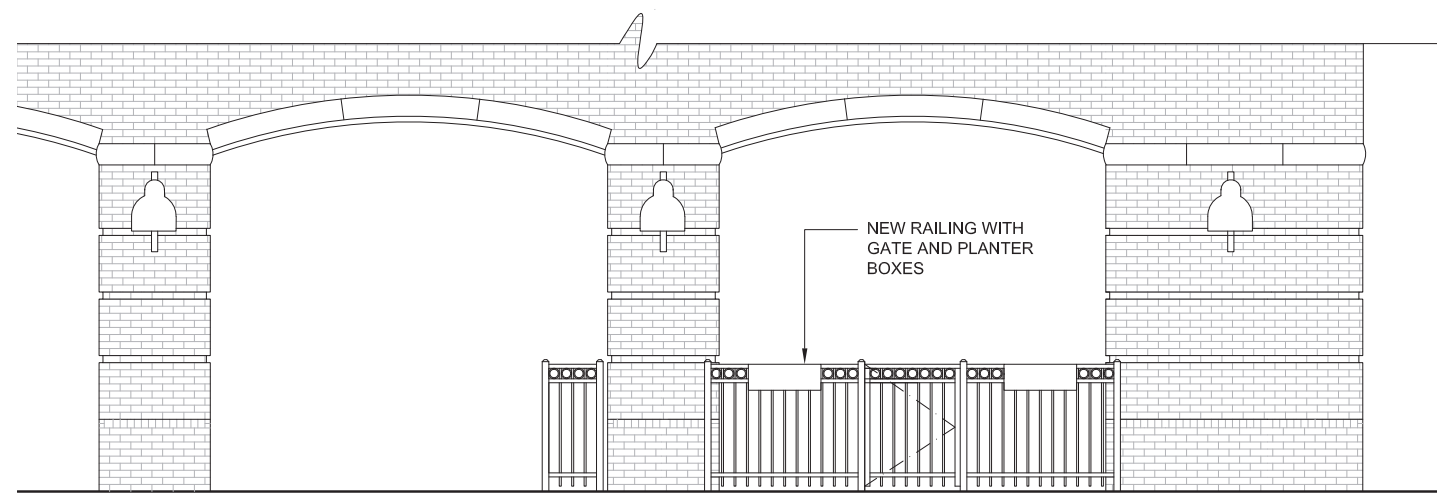




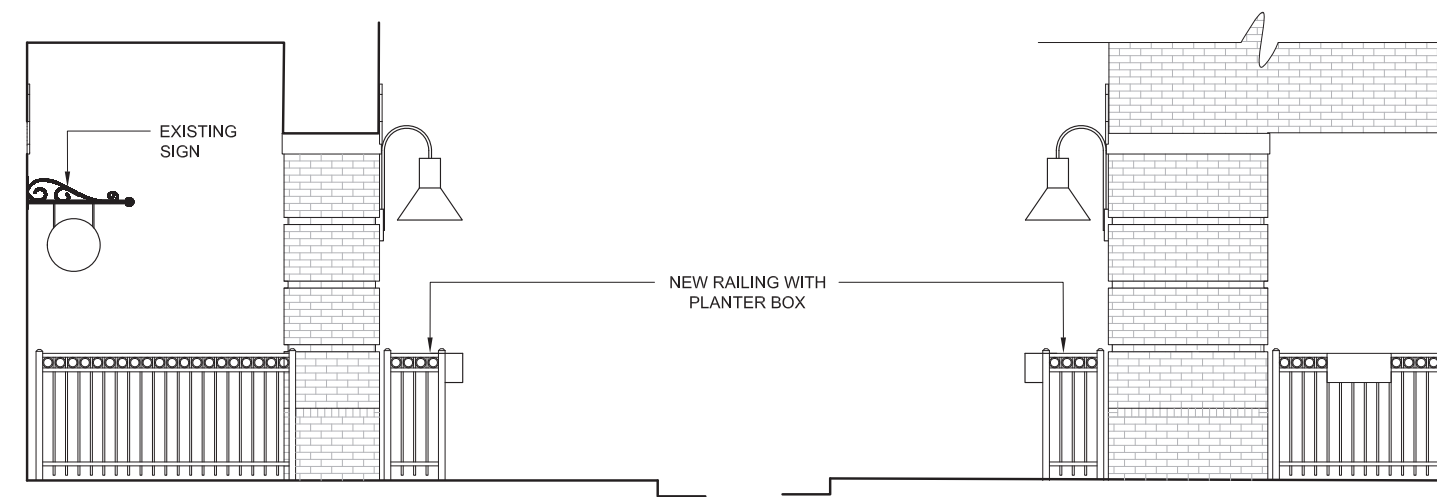




① STOREFRONT ELEVATION



② WEST ELEVATION



③ NORTH ELEVATION

④ SOUTH ELEVATION



PROPOSED TABLE

- EMU CONTRACT 'STAR #305'
- INDOOR/OUTDOOR TABLE
- 28" X 28" X 29.5"H
- TOP THICKNESS: 1 3/8"
- TOP: STEEL (POWDER COATED)
- BASE: TUBULAR STEEN LEGS (POWDER COATED)



PROPOSED TABLE

- EMU CONTRACT 'NOVA ADA #854'
- INDOOR/OUTDOOR ACCESSIBLE TABLE
- 48" X 32" X 29"H
- TOP THICKNESS: 1 3/8"
- TOP: STEEL (POWDER COATED)
- BASE: TUBULAR STEEN LEGS (POWDER COATED)



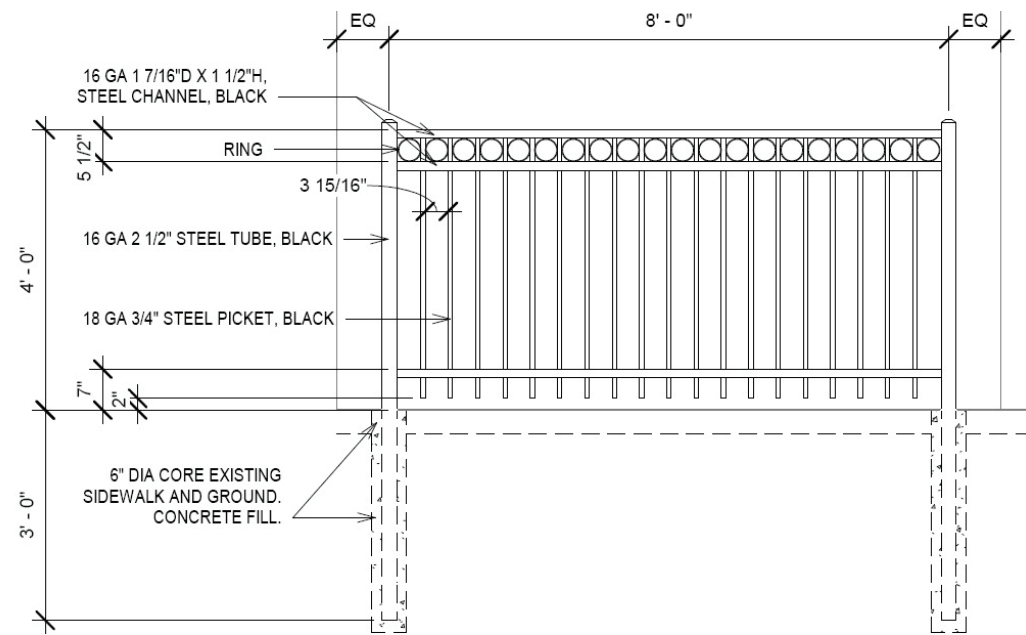
PROPOSED CHAIR

- EMU CONTRACT 'SEGNO #263'
- INDOOR/OUTDOOR STACKING CHAIR
- FRAME: STEEL (POWDER COATED)
- SEAT/BACK: STEEL SLATS



PROPOSED RAILING PLANTER

- VERADEK OUTDOOR 'METALLIC RAILING PLANTER'
- 36" X 9" X 9"
- THICK GAUGE GALVANIZED STEEL



PROPOSED FENCE (REFERENCE DETAIL)

- POSTS: 2 1/2" STEEL TUBE
- CROSS BARS: 1 1/2" SQ STEEL TUBE
- PICKETS: 3/4" STEEL, 4" O.C.
- COLOR: PAINTED BLACK
- HEIGHT: 48" A.F.F.







