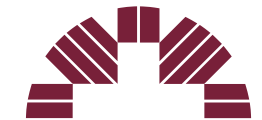


Client:



MOUNT CARMEL

A Member of Trinity Health

Project:

**Mount Carmel Northwest Health
Campus
Wayfinding Signage System**

**Project Number: C22524
Wayfinding Signage System**

**Exterior Signage Design Updates
Issued For Coordination & Discussion**

06.20.2022

Revisions:

Revision A

Halo Lighting Added

Design Intent

Set Out

Sign Name

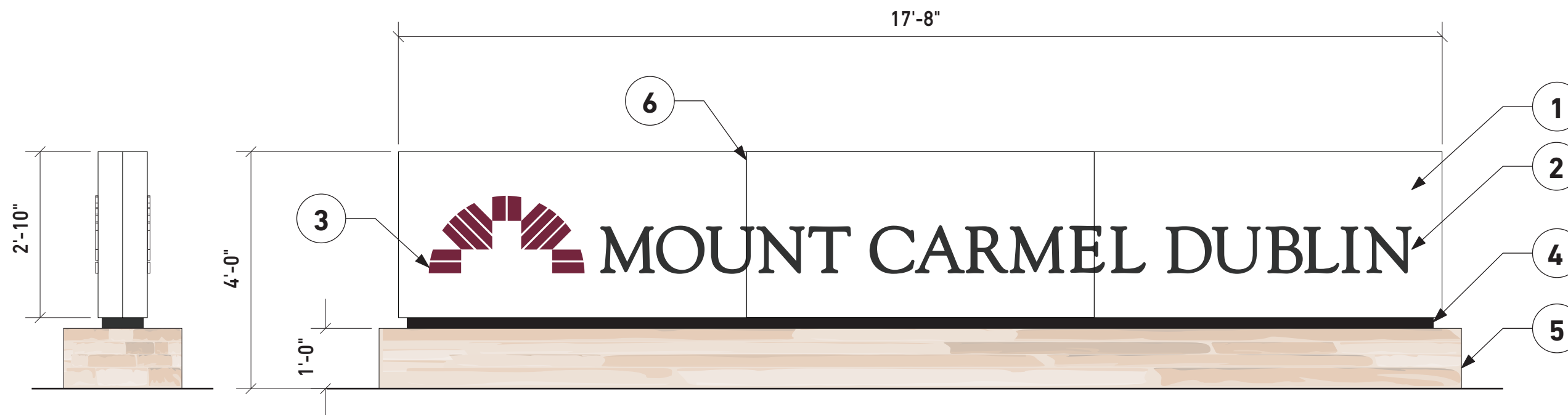
Primary Site Entry Sign

Emerald Parkway

SE-01

Notes:

1. Internally illuminated sign cabinet fabricated from 1/8" thick aluminum with white 2Pac Polyurethane satin paint finish to match MP03337.
2. 1" push through day/night acrylic graphics.
3. 1" push through day/night acrylic graphics with perforated burgundy vinyl to match PMS 208.
4. 2" reveal between sign frame and top of sign footing with 2Pac Polyurethane paint finish to match MP41335SP.
5. 12" high stone clad sign base. Stone to match architectural stone finish.
6. Hairline panel joint.



02 | End View
Scale: 1:24

01 | Front View
Scale: 1:24

General Notes:

Sign contractor to ensure sign structure, footings and fixings are fit for purpose.

All footings and fixation methods to be certified by a qualified structural engineer licensed to practice in the state of Ohio.

Client:



MOUNT CARMEL

A Member of Trinity Health

Project:

Mount Carmel Northwest Health
Campus
Wayfinding Signage System

Project Number: C22524
Wayfinding Signage System

Exterior Signage Design Updates
Issued For Coordination & Discussion

06.20.2022

Revisions:

Revision A.

Halo Lighting Added

Design Intent

Set Out

Sign Name

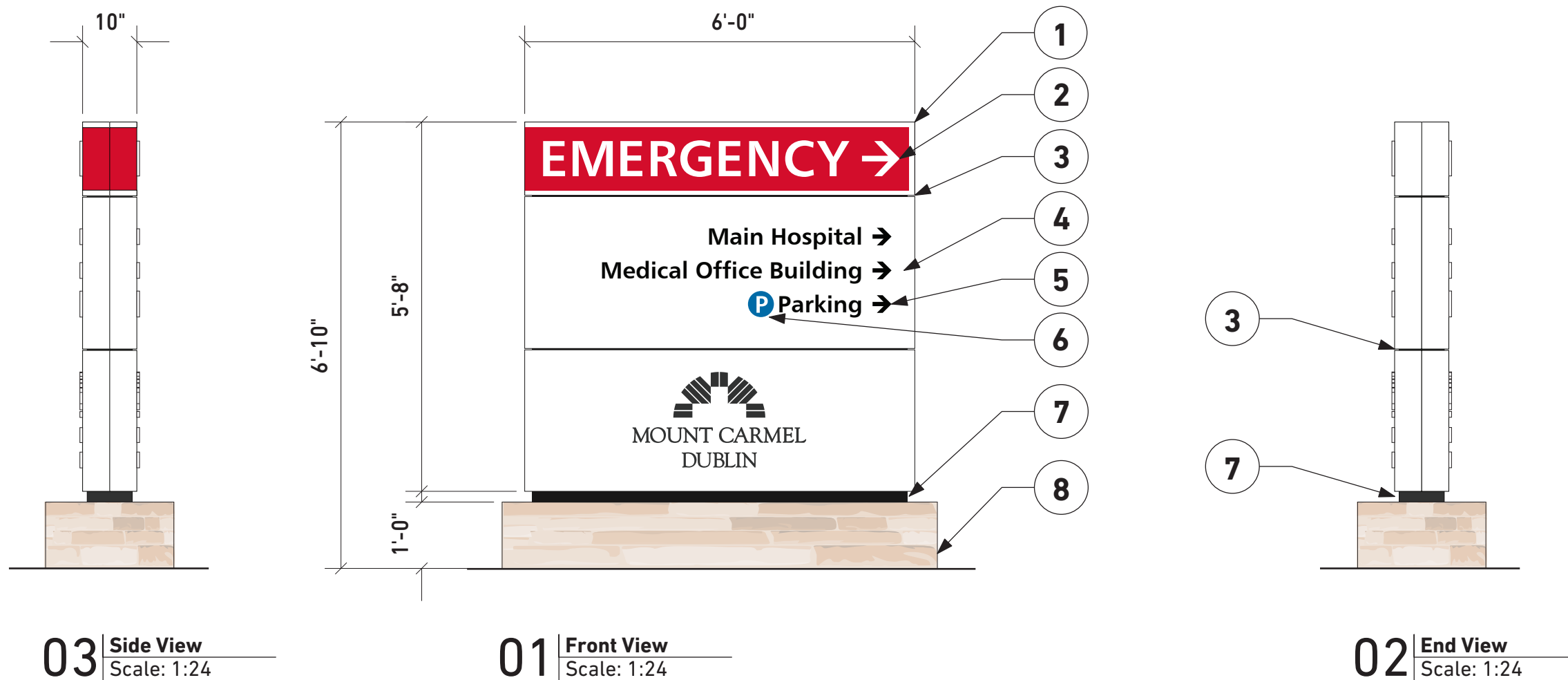
Secondary Site Entry Sign

Sawmill Road, Bright Road

SE-02

Notes:

1. Internally illuminated emergency beacon with opal acrylic faces and applied translucent red vinyl graphics to match PMS 186. Aluminum frame and top with white 2Pac Polyurethane satin paint finish to match MP03337.
2. 0.5" opal acrylic, push through graphics with halo illumination.
3. 1/4" reveal with 2Pac Polyurethane paint finish to match MP41335SP.
4. Internally illuminated sign cabinet fabricated from 1/8" thick aluminum with white 2Pac Polyurethane satin paint finish to match MP03337.
5. 0.5" opal acrylic, push through day/night acrylic graphics with halo illumination.
6. 0.5" push through opal acrylic graphics with translucent vinyl to match PMS 293.
7. 2" reveal between sign frame and top of sign footing.
8. 12" high stone clad sign base. Stone to match architectural stone finish.



03 Side View
Scale: 1:24

01 Front View
Scale: 1:24

02 End View
Scale: 1:24

General Notes:

Sign contractor to ensure sign structure, footings and fixings are fit for purpose.
All footings and fixation methods to be certified by a qualified structural engineer licensed to practice in the state of Ohio.

Client:



MOUNT CARMEL

A Member of Trinity Health

Project:

**Mount Carmel Northwest Health
Campus
Wayfinding Signage System**

**Project Number: C22524
Wayfinding Signage System**

**Exterior Signage Design Updates
Issued For Coordination & Discussion**

06.20.2022

Revisions:

Revision A.
Halo Lighting Added

Design Intent

Set Out

Sign Name

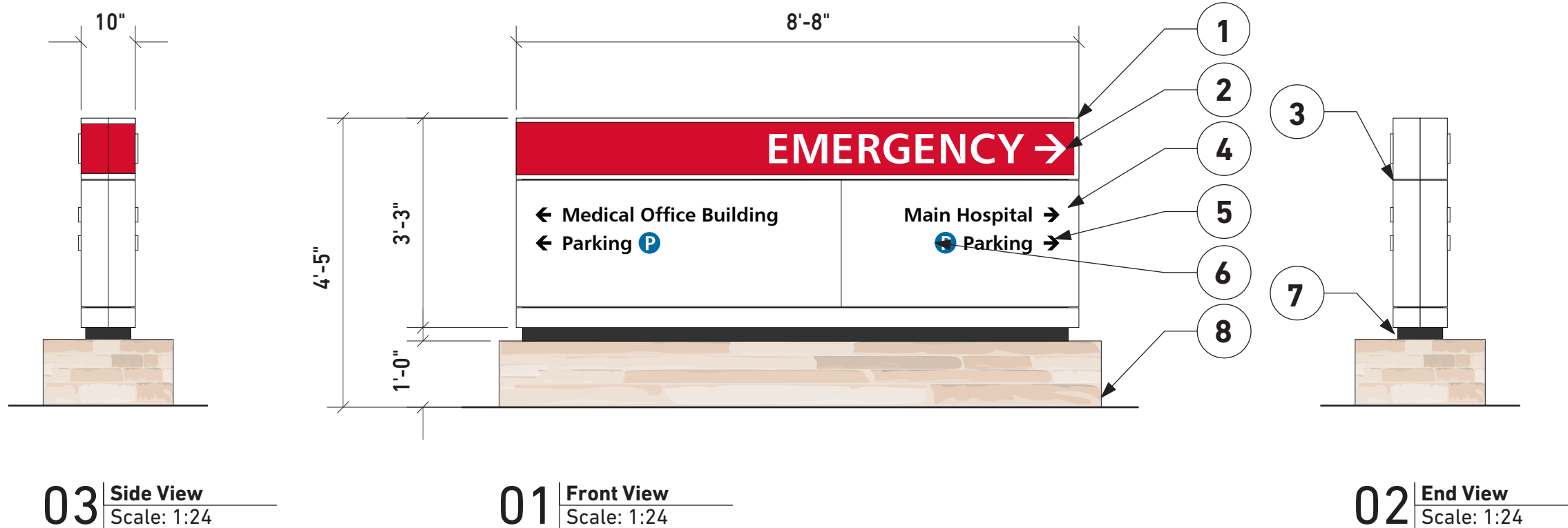
Primary Directional Sign

(Primary Campus Intersections)

DR-01

Notes:

1. Internally illuminated emergency beacon with opal acrylic faces and applied translucent red vinyl graphics to match PMS 186. Aluminum frame and top with white 2Pac Polyurethane satin paint finish to match MP03337.
2. 0.5" opal acrylic, push through graphics with halo illumination.
3. 1/4" reveal with 2Pac Polyurethane paint finish to match MP41335SP.
4. Internally illuminated sign cabinet fabricated from 1/8" thick aluminum with white 2Pac Polyurethane satin paint finish to match MP03337.
5. 0.5" opal acrylic, push through day/night acrylic graphics with halo illumination.
6. 0.5" push through opal acrylic graphics with translucent vinyl to match PMS 293.
7. 2" reveal between sign frame and top of sign footing.
8. 12" high stone clad sign base. Stone to match architectural stone finish.



03 Side View
Scale: 1:24

01 Front View
Scale: 1:24

02 End View
Scale: 1:24

General Notes:

Sign contractor to ensure sign structure, footings and fixings are fit for purpose.
All footings and fixation methods to be certified by a qualified structural engineer licensed to practice in the state of Ohio.

Client:



MOUNT CARMEL

A Member of Trinity Health

Project:

**Mount Carmel Northwest Health
Campus
Wayfinding Signage System**

**Project Number: C22524
Wayfinding Signage System**

**Exterior Signage Design Updates
Issued For Coordination & Discussion**

06.20.2022

Revisions:

Revision A.

Halo Lighting Added

Design Intent

Set Out

Sign Name

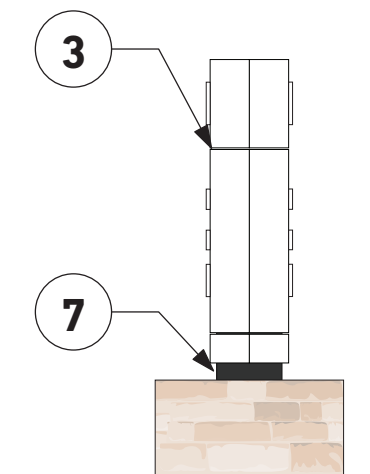
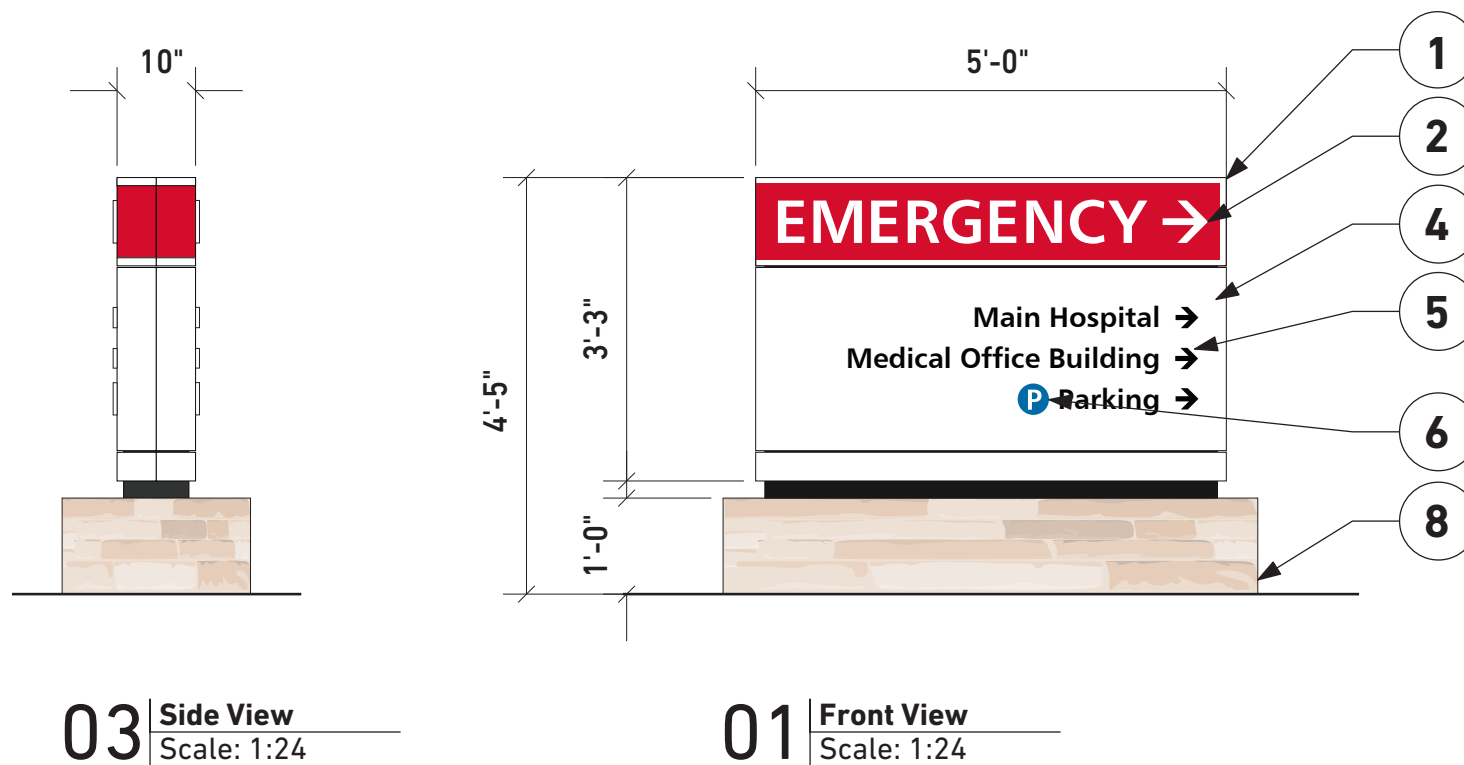
Secondary Directional Sign

(Road & Main Campus Intersections)

DR-02

Notes:

1. Internally illuminated emergency beacon with opal acrylic faces and applied translucent red vinyl graphics to match PMS 186. Aluminum frame and top with white 2Pac Polyurethane satin paint finish to match MP03337.
2. 0.5" opal acrylic, push through graphics with halo illumination.
3. 1/4" reveal with 2Pac Polyurethane paint finish to match MP41335SP.
4. Internally illuminated sign cabinet fabricated from 1/8" thick aluminum with white 2Pac Polyurethane satin paint finish to match MP03337.
5. 0.5" opal acrylic, push through day/night acrylic graphics with halo illumination.
6. 0.5" push through opal acrylic graphics with translucent vinyl to match PMS 293.
7. 2" reveal between sign frame and top of sign footing.
8. 12" high stone clad sign base. Stone to match architectural stone finish.



03 Side View
Scale: 1:24

01 Front View
Scale: 1:24

02 End View
Scale: 1:24

General Notes:

Sign contractor to ensure sign structure, footings and fixings are fit for purpose.
All footings and fixation methods to be certified by a qualified structural engineer licensed to practice in the state of Ohio.

Client:



MOUNT CARMEL

A Member of Trinity Health

Project:

Mount Carmel Northwest Health
Campus
Wayfinding Signage System

Project Number: C22524
Wayfinding Signage System

Exterior Signage Design Updates
Issued For Coordination & Discussion

06.20.2022

Revisions:

Design Intent

Set Out

Sign Name

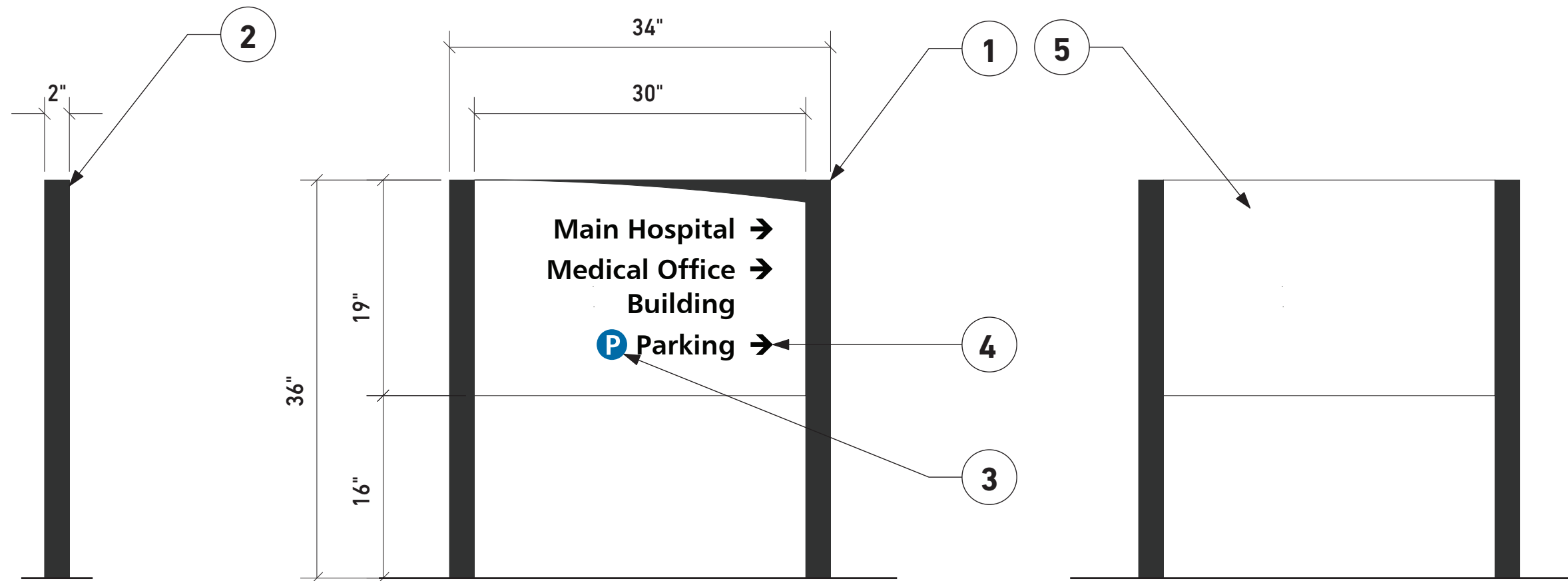
Secondary Directional Sign

(Secondary Campus Intersections)

DR-03

Notes:

1. Double sided Freestanding, externally illuminated post and panel sign with white 2Pac Polyurethane satin paint finish to match MP05780.
2. 2"x 2" SHS post with 2Pac Polyurethane paint finish to match architectural charcoal metal finish, TBD.
3. Applied vinyl graphics to match 3M Scotchcal Opaque 7725-17 Vivid Blue.
4. Applied vinyl graphics to match architectural charcoal metal finish, TBD.
5. Finished back side when single sided sign required.



03 Side View
Scale: 1:12

01 Front View
Scale: 1:12

02 End View
Scale: 1:12

General Notes:

Sign contractor to ensure sign structure, footings and fixings are fit for purpose.
All footings and fixation methods to be certified by a qualified structural engineer licensed to practice in the state of Ohio.

Client:



Project:

Mount Carmel Northwest Health
Campus
Wayfinding Signage System

Project Number: C22524
Wayfinding Signage System

Exterior Signage Design Updates
Issued For Coordination & Discussion

06.20.2022

Revisions:

Design Intent

Set Out

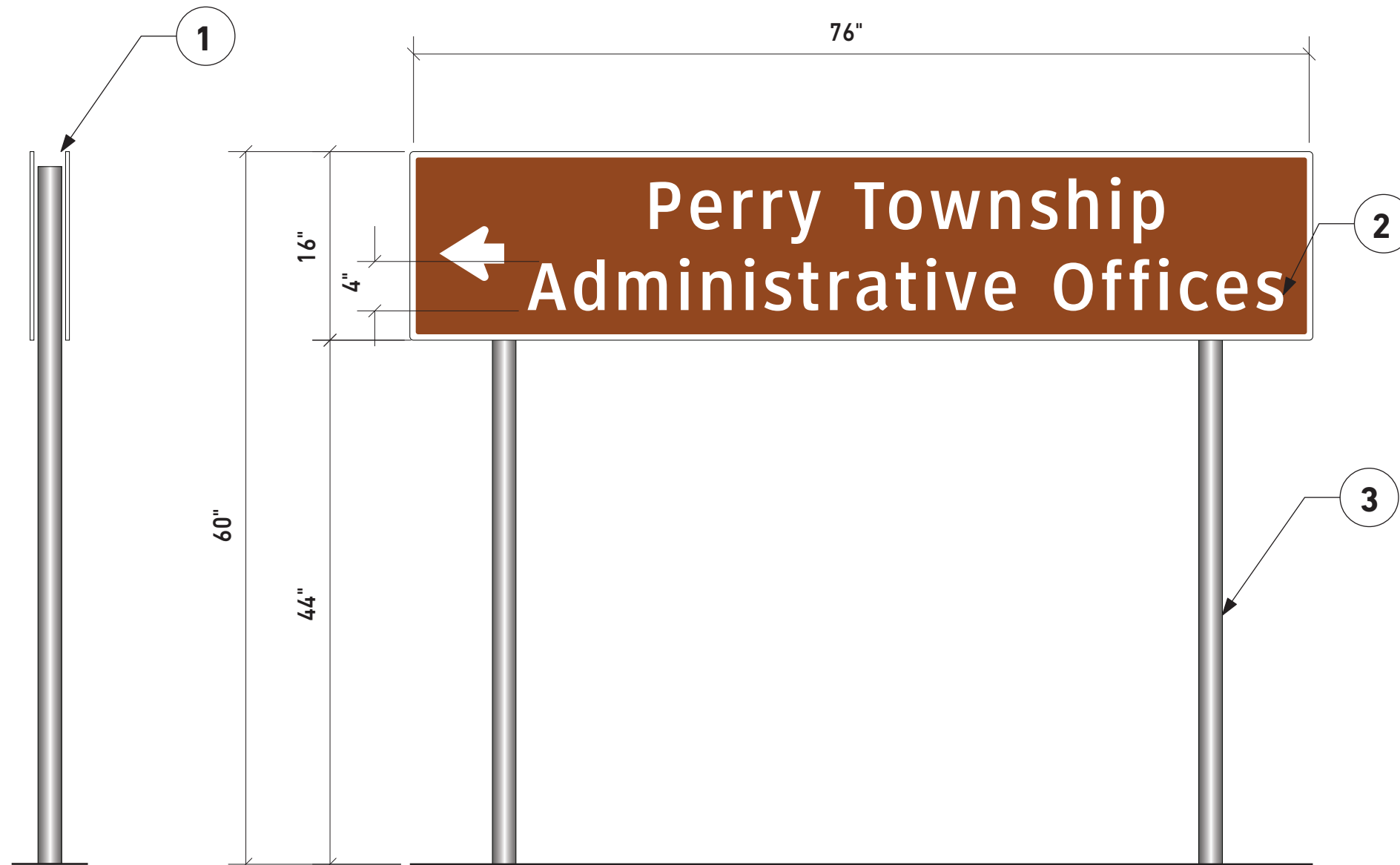
Sign Name

Secondary Directional Sign
(Bright Road Entry & Access Drive
Intersection)

DR-04

Notes:

1. Double sided standard ODOT
2. 1/8" Thick aluminium sign faces with painted graphics and reflective vinyl to match ODOT standards.
3. Glvanized steel post.



03 Side View
Scale: 1:12

01 Front View
Scale: 1:12

General Notes:

Sign contractor to ensure sign structure, footings and fixings are fit for purpose.
All footings and fixation methods to be certified by a qualified structural engineer licensed to practice in the state of Ohio.